

EXHIBIT "A"

DESCRIPTION PER
REDMOND AIRPORT RUNWAYS AND CENTERLINE MONUMENTS
LOCATED IN SECTIONS 22 AND 23, T15S, R13E, W.M.,
CITY OF REDMOND, DESCHUTES COUNTY, OREGON

BEGINNING AT A 3" BRASS CAP IN A MONUMENT WELL MARKING THE CENTERLINE OF RUNWAY 5-23, FROM WHICH THE NORTHEAST END OF SAID RUNWAY BEARS S60°48'30"W, 100.45 FEET, AND ALSO FROM WHICH A 3-1/4" ALUMINUM CAP MARKING THE NORTHEAST CORNER OF SECTION 22 BEARS N68°44'43"W, 2936.28 FEET; THENCE S01°54'00"W, 3798.08 FEET TO A HOLE IN A CONCRETE BASE MARKING THE CENTERLINE OF RUNWAY 11-29, FROM WHICH THE SOUTHEAST END OF SAID RUNWAY BEARS N57°39'23"W, 0.06 FEET; THENCE N87°21'17"W, 6165.75 FEET TO A 3" BRASS CAP IN A MONUMENT WELL MARKING THE CENTERLINE OF RUNWAY 5-23, FROM WHICH THE SOUTHWEST END OF SAID RUNWAY BEARS N60°48'30"E, 61.03 FEET; THENCE N03°58'03"E, 3471.88 FEET TO A 2-1/2" BRASS CAP MARKING THE CENTERLINE OF RUNWAY 11-29, FROM WHICH THE NORTHWEST END OF SAID RUNWAY BEARS N57°39'23"W, 0.18 FEET, AND ALSO FROM WHICH A 2-1/2" BRASS CAP MARKING THE NORTHWEST CORNER OF SAID SECTION 22 BEARS N60°02'38"W, 2320.18 FEET; THENCE N89°32'47"E, 6045.06 FEET TO THE POINT OF BEGINNING.

BEARINGS FOR THIS DESCRIPTION ARE BASED ON OREGON STATE PLANE SOUTH ZONE COORDINATES, MEASURED IN INTERNATIONAL FEET.

REGISTERED
PROFESSIONAL
LAND SURVEYOR

OREGON
MARCH 09, 2021
MATTHEW G. BANTON
96574

RENEWS: 12/31/25

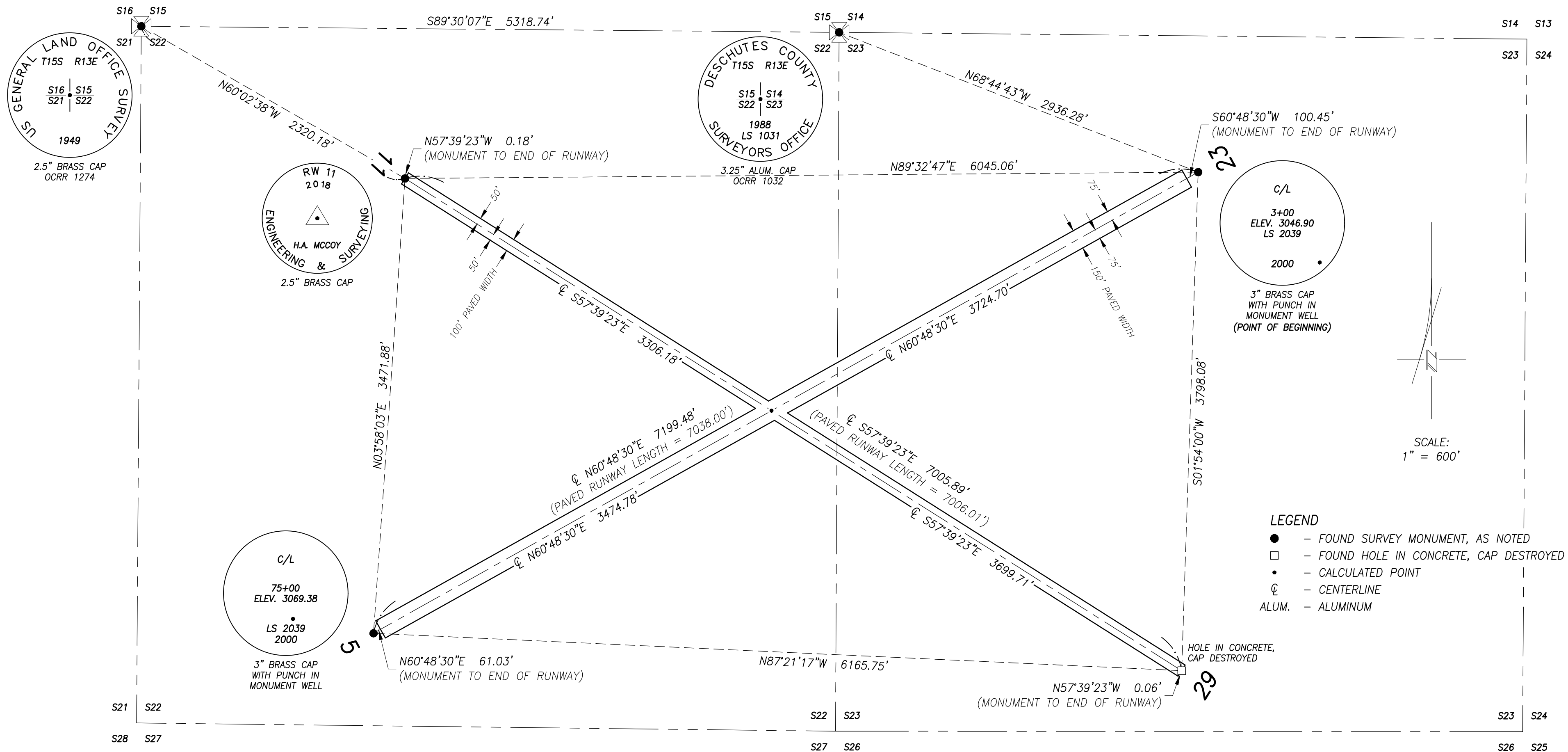
PREPARED: APRIL 30, 2024

PGA POVEY AND
ASSOCIATES

P.O. BOX 131, REDMOND, OR 97756
(541) 548-6778 24-033CTRL.DWG

RECORD OF SURVEY FOR THE CITY OF REDMOND
 LOCATED IN SECTIONS 22 AND 23, TOWNSHIP 15 SOUTH, RANGE 13 EAST, W.M.,
 CITY OF REDMOND, DESCHUTES COUNTY, OREGON

SURVEY DATE: MARCH 26, 2024



NARRATIVE

LOCATION DATA FOR THIS SURVEY WAS COLLECTED IN INTERNATIONAL FEET WITH OREGON STATE PLANE SOUTH ZONE COORDINATES, AS MEASURED BY AVERAGED RTK GPS MEASUREMENTS, USING A TRIMBLE R-10 GPS SYSTEM.

CONTROL COMPARISONS BETWEEN OUR EARLIER SURVEYS, WHICH WERE PREVIOUSLY TIED USING OUR REDMOND GPS NETWORK COORDINATES, AND THE OREGON STATE PLANE SOUTH ZONE COORDINATE SYSTEM YIELDED ACCEPTABLE RESULTS WHEN CHECKING AGAINST THE DATUM TRANSFORMATION PARAMETERS PROVIDED IN UNPUBLISHED SURVEY DATA PROVIDED BY WH PACIFIC IN 2012. AFTER CONVERTING THE PREVIOUS COMPARISON FROM U.S. SURVEY FEET TO INTERNATIONAL FEET, THE AS-MEASURED POSITIONS OF RUNWAY CENTERLINE MONUMENTS CHECKED WITH A PRECISION OF 1:128500. DISTANCE CONVERSION COMPARISONS BETWEEN THE SECTION CORNERS CHECKED WITH A PRECISION OF 1:155700.

AN ANGULAR COMPARISON BETWEEN THE CONVERTED SECTION CORNER LOCATIONS CHECKED WITHIN 00°00'02". ADDITIONALLY, THE RUNWAY CENTERLINE ANGLES CHECKED WITHIN 00°00'10" ON RUNWAY 5-23 AND 00°00'03" ON RUNWAY 11-29.

ALL MONUMENTS FOUND WERE IN GOOD CONDITION, WITH THE EXCEPTION OF THE MISSING BRASS CAP AT THE SOUTHEAST END OF RUNWAY 11-29, WHERE A HOLE IN A CONCRETE BASE WAS ALL THAT REMAINS FROM THE MONUMENT MOST RECENTLY SET IN 2018 BY HAYES MCCOY. THE CENTER OF THE HOLE WAS HELD AS THE HORIZONTAL LOCATION OF THE MISSING MONUMENT.

LEGAL DESCRIPTION

BEGINNING AT A 3" BRASS CAP IN A MONUMENT WELL MARKING THE CENTERLINE OF RUNWAY 5-23, FROM WHICH THE NORTHEAST END OF SAID RUNWAY BEARS S60°48'30"W, 100.45 FEET, AND ALSO FROM WHICH A 3-1/4" ALUMINUM CAP MARKING THE NORTHEAST CORNER OF SECTION 22 BEARS N68°44'43"W, 2936.28 FEET; THENCE S01°54'00"W, 3798.08 FEET TO A HOLE IN A CONCRETE BASE MARKING THE CENTERLINE OF RUNWAY 11-29, FROM WHICH THE SOUTHEAST END OF SAID RUNWAY BEARS N57°39'23"W, 0.06 FEET; THENCE N87°21'17"W, 6165.75 FEET TO A 3" BRASS CAP IN A MONUMENT WELL MARKING THE CENTERLINE OF RUNWAY 5-23, FROM WHICH THE SOUTHWEST END OF SAID RUNWAY BEARS N60°48'30"E, 61.03 FEET; THENCE N03°58'03"E, 3471.88 FEET TO A 2-1/2" BRASS CAP MARKING THE CENTERLINE OF RUNWAY 11-29, FROM WHICH THE NORTHWEST END OF SAID RUNWAY BEARS N57°39'23"W, 0.18 FEET, AND ALSO FROM WHICH A 2-1/2" BRASS CAP MARKING THE NORTHWEST CORNER OF SECTION 22 BEARS N60°02'38"W, 2320.18 FEET; THENCE N89°32'47"E, 6045.06 FEET TO THE POINT OF BEGINNING.

BEARINGS FOR THIS DESCRIPTION ARE BASED ON OREGON STATE PLANE SOUTH ZONE COORDINATES, MEASURED IN INTERNATIONAL FEET.

PREPARED: APRIL 30, 2024

REGISTERED
 PROFESSIONAL
 LAND SURVEYOR
**PRELIMINARY MAP
 NOT FOR RECORDING**
 OREGON
 MARCH 09, 2021
 MATTHEW G. BANTON
 96574
 RENEWS: 12/31/25

SHEET 1 OF 1

P&A POVEY AND ASSOCIATES
 P.O. BOX 131, REDMOND, OR 97756
 (541) 548-6778 24-033CTRL.DWG