

Former Redmond Rod and Gun Club Property

Grant Funded Pre-Design Investigation

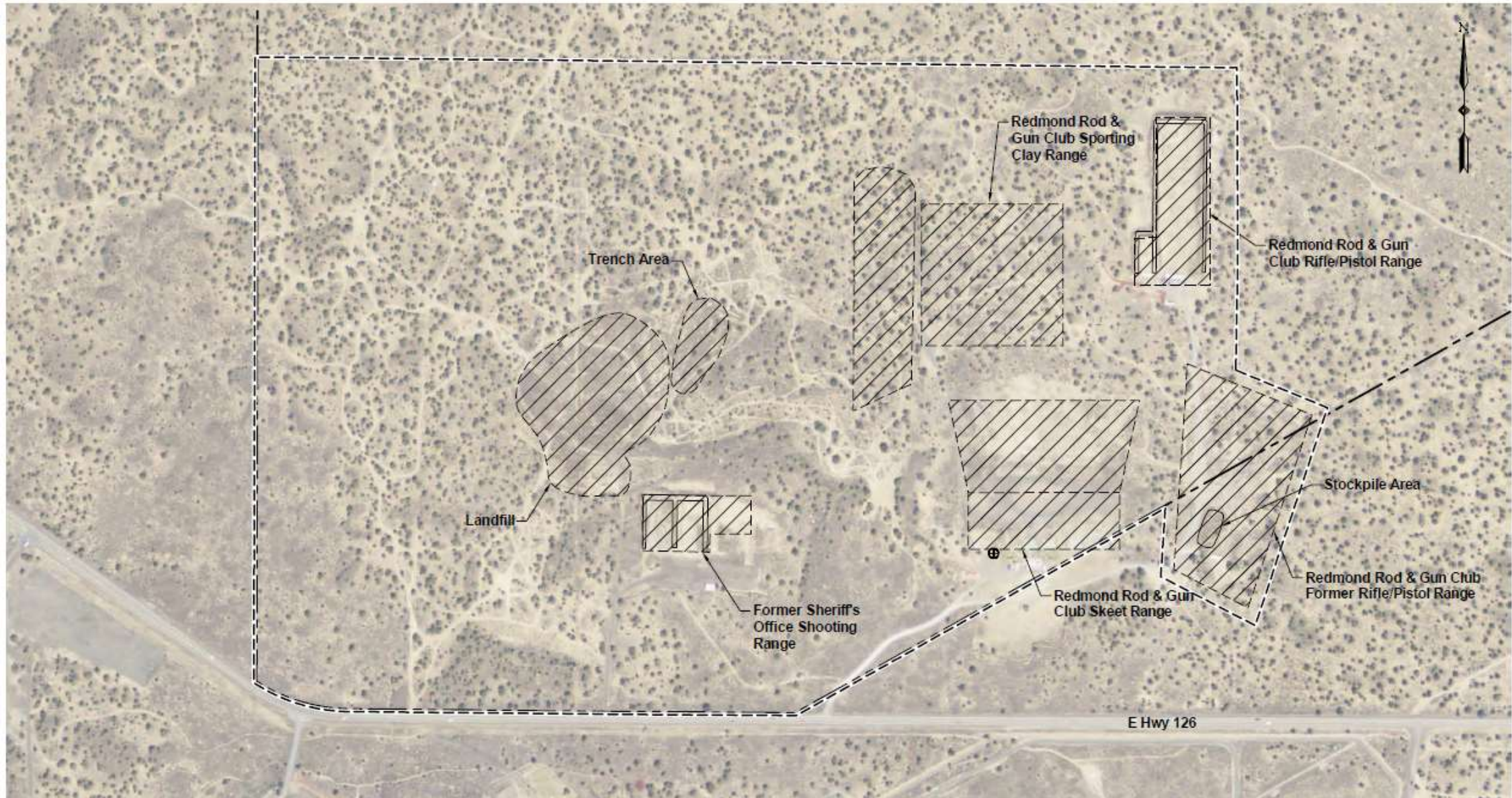


Site encompasses 250 acres, and includes:

- Former Redmond Rod and Gun Club – operated from 1956 to 2018ish.
- Former Sheriff's Range – operated between late 1970s to 2018ish.
- Disposal Area - post WW2 disposal



Site Plan



DEQ cleanup process began in 2009

- Site Investigation
- Feasibility Study
- Record of Decision (ROD) – received in 2020

The ROD documents DEQ's approval and associated conditions:

- Cleanup action - excavation and on-site containment
- Easement and Servitudes
 - Allowed land use - agricultural and residential uses prohibited
 - Future groundwater use requires evaluation (specified in ROD)
 - Contaminated Media Management Plan – future management plan

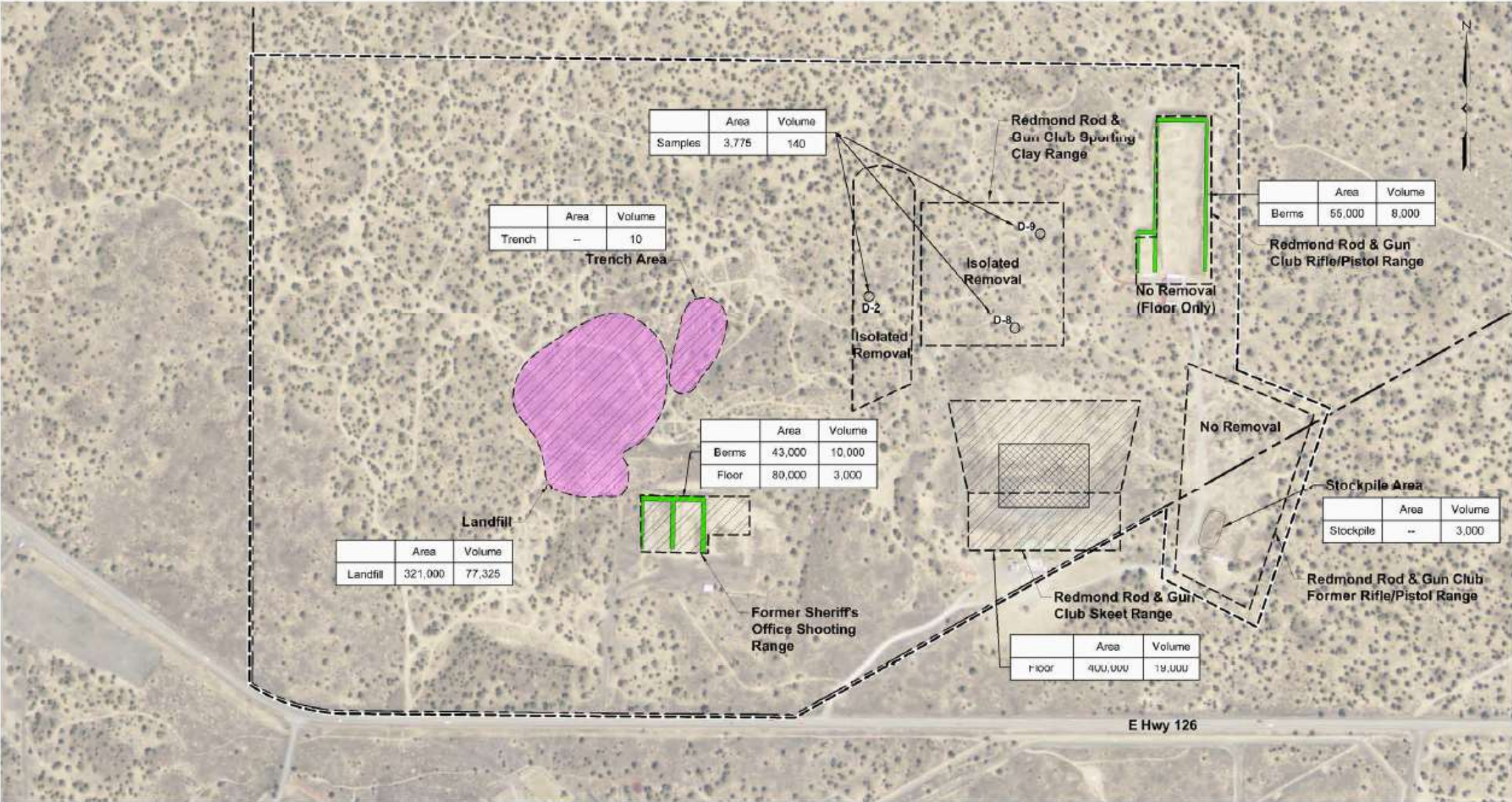


CORE3 Master planning continues

- Gun Club sufficiently characterized for cleanup
- Disposal area: remaining unknowns
 - Waste extent
 - Waste content
 - Presence of asbestos in materials and/or airborne dust (during excavation).



Remedial Action Areas



Pre-Design Investigation:

- Geophysical survey
 - Characterize contents of disposal area
 - Map extents of waste, confirm removal volumes
- Pre-design investigation (PDI)
 - Characterize contents of waste
 - Assess whether asbestos present in materials
 - Assess whether airborne asbestos likely during excavation
- Cultural resources review/survey
- Endangered Species Act (ESA) review
- PDI Report

