

Deadwood Historic District Amendment 2024

Deadwood Historic Preservation Commission Meeting
November 21, 2023

1

Deadwood Historic District

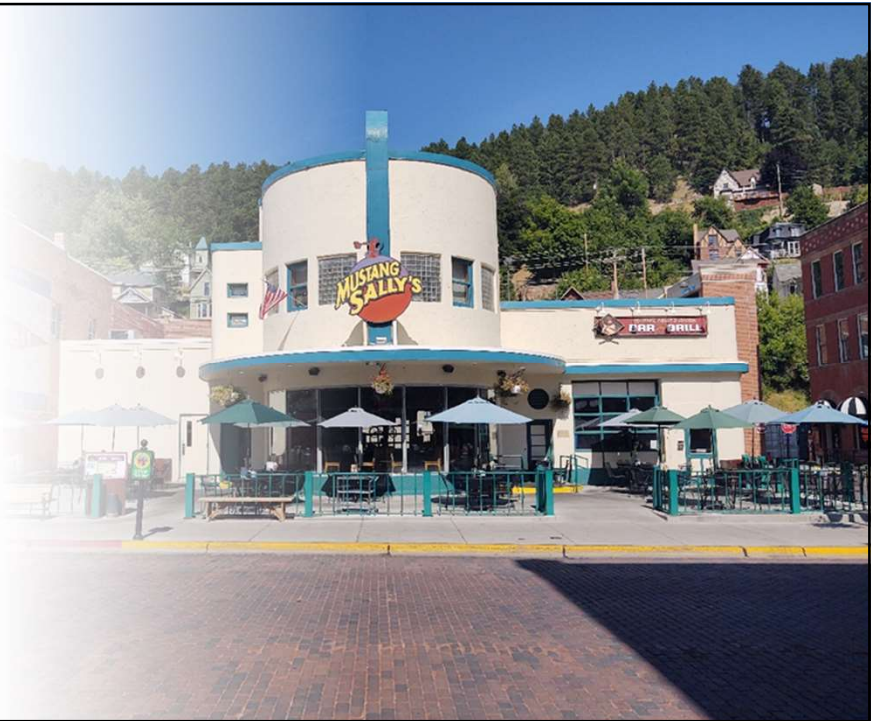


- Designated a National Historic Landmark in 1961
- Added to the National Register of Historic Places in 1966
- National Register inventory form completed in 1976 and signed by keeper in 1985
- A 1989 National Register amendment increased the period of significance to 1875-1939 and clarified significance

2

Deadwood Historic District Amendment

- Previous National Register documentation does not give full inventory or map of which resources are contributing versus non-contributing to District.
- In 2022, SHPO and City of Deadwood shared the cost of an updated survey of the District.
- SHPO is preparing the amendment.



3

Why do the Amendment?

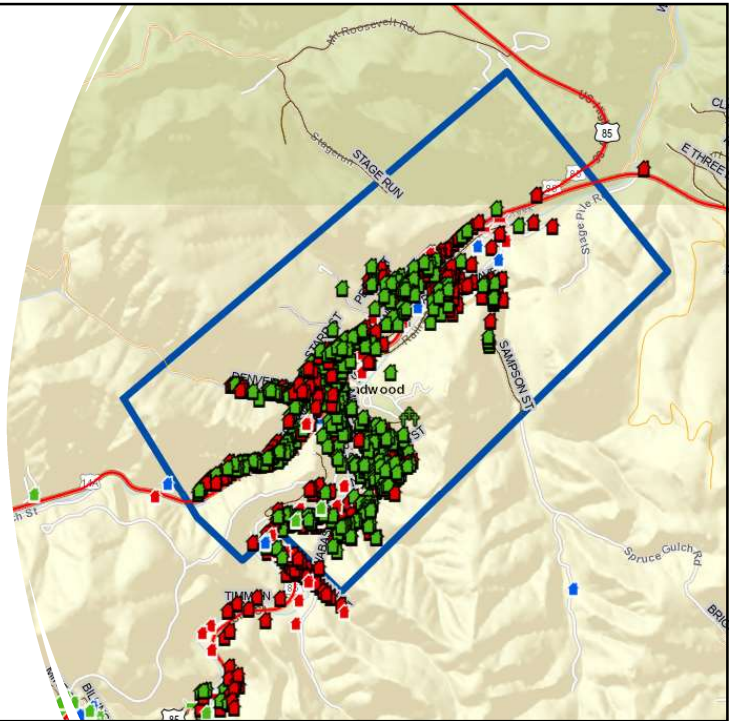
- Duty of SHPO to maintain accurate records of historic properties within the state
- Clarifies to City, SHPO, and individual property owners which resources are contributing versus non-contributing
- Assists City and SHPO with reviews for Section 106 and SDCL 1-19A-11.1 compliance
- Assists City and SHPO with reviews for state and local financial incentives and programs



4

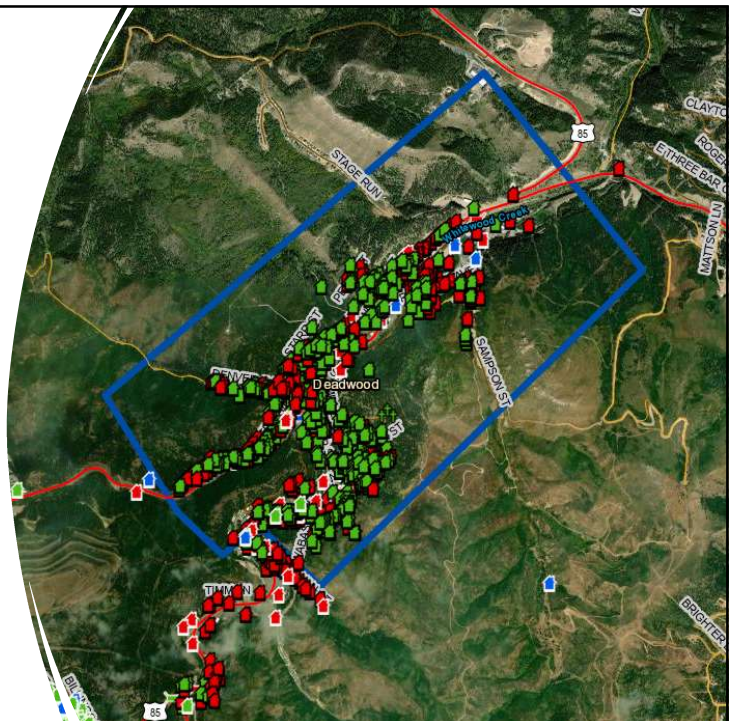
Deadwood Historic District Boundary

- The blue line is a close approximation of the current NR/NHL boundary



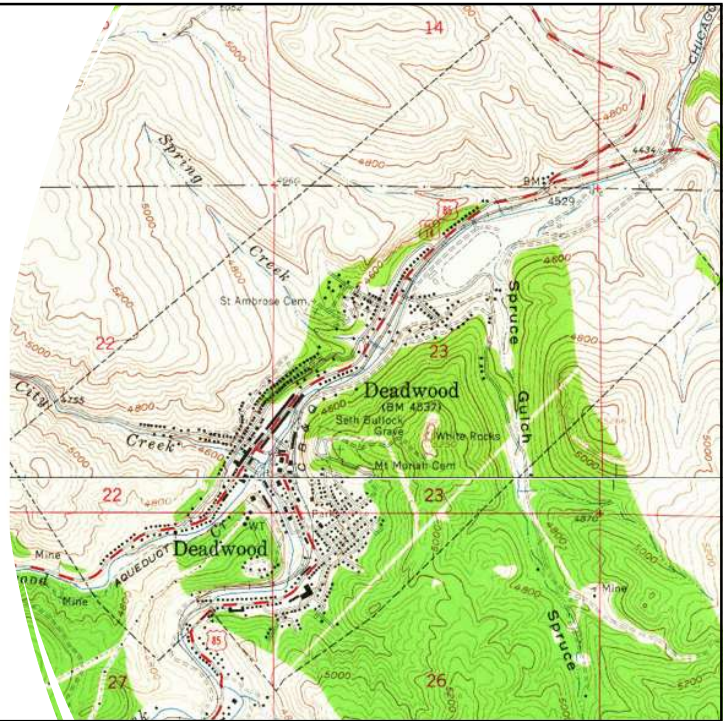
5

- Boundary was clarified in a 1976 NPS historic sites survey as the city limits.
- Keeper of National Register of Historic Places formally established the boundary in 1985 as the city limits.



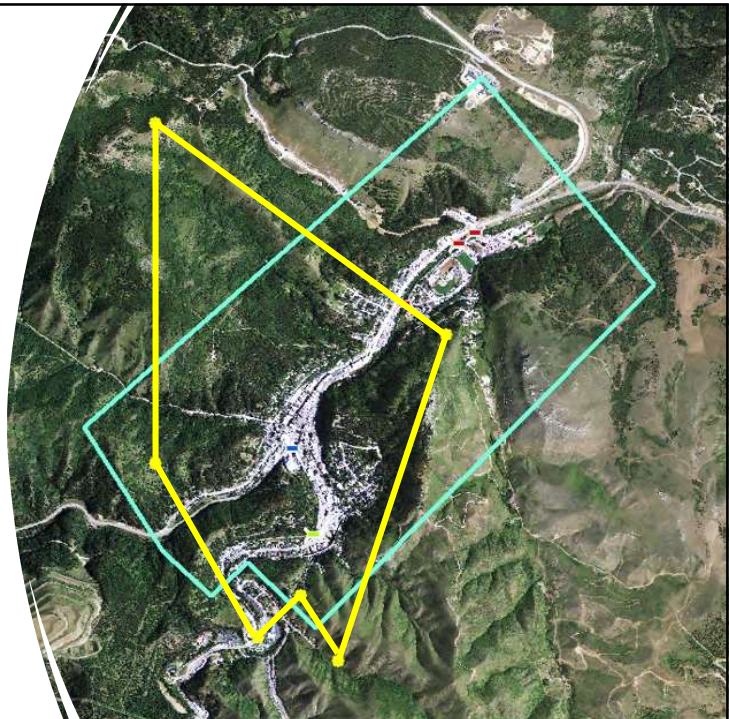
6

-
- 1961 USGS Quad Map denoting the Deadwood City limits (hashed line)

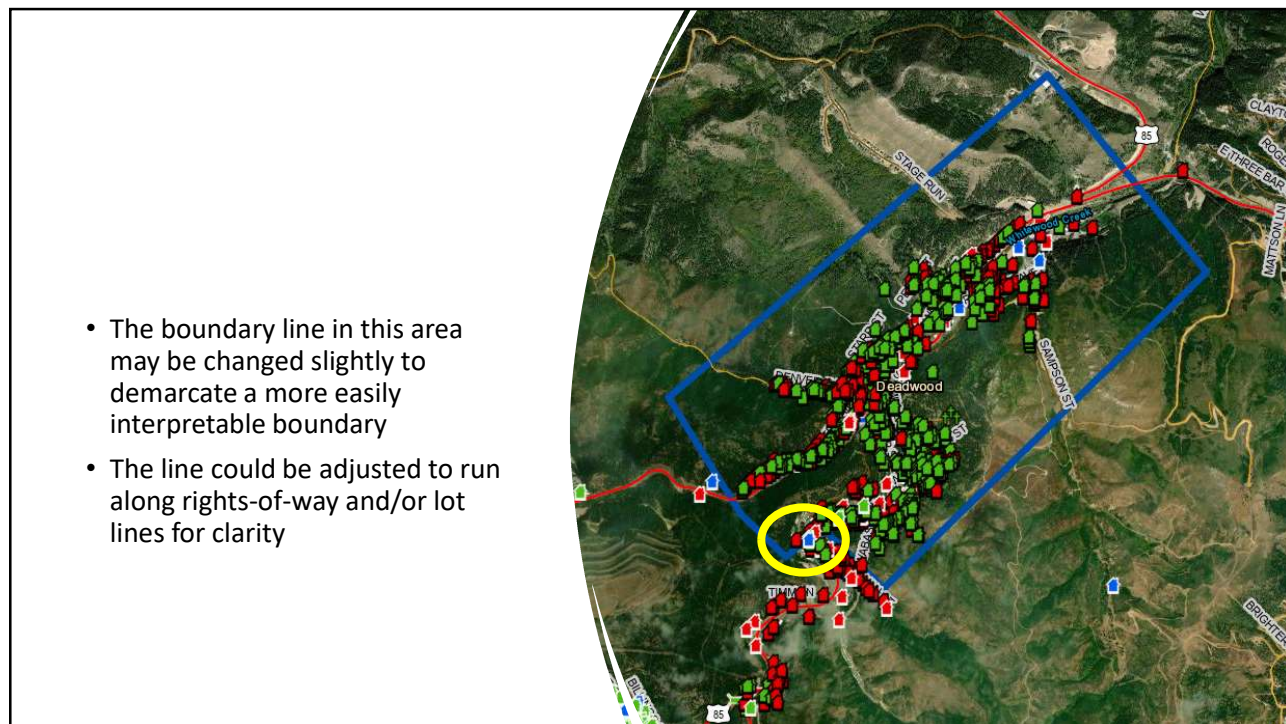


7

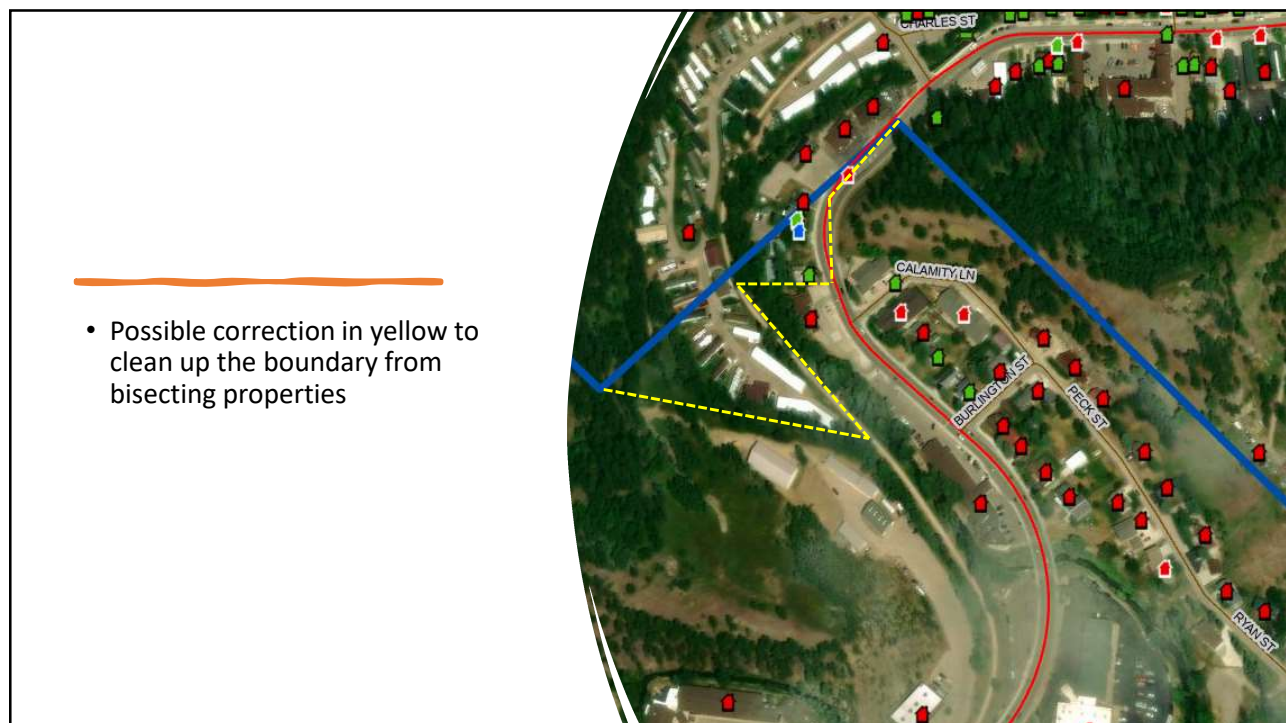
-
- The UTM points listed in 1976 NPS historic sites survey. Due to the technology of the time, these points were never intended to be as accurate as today's standards and only provided a rough bracketing of the resource



8



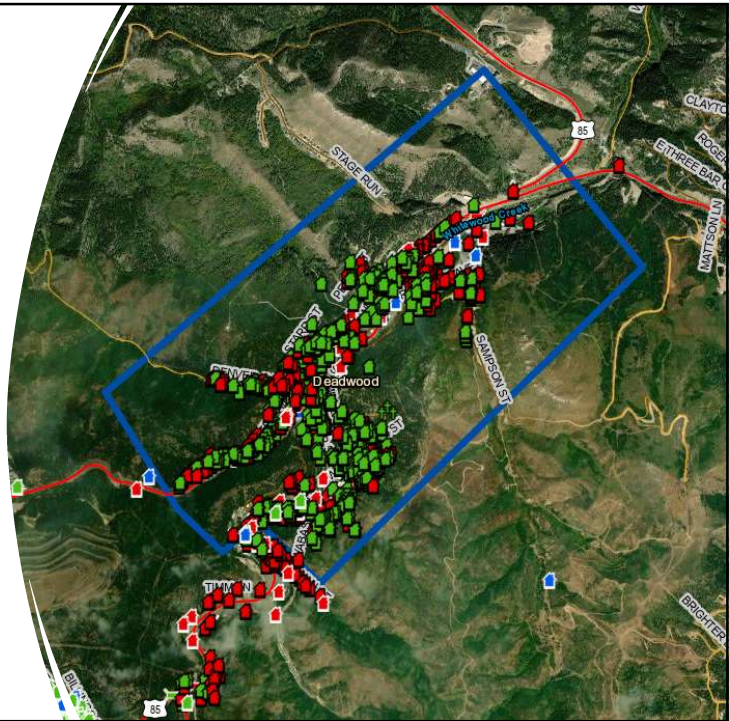
9



10

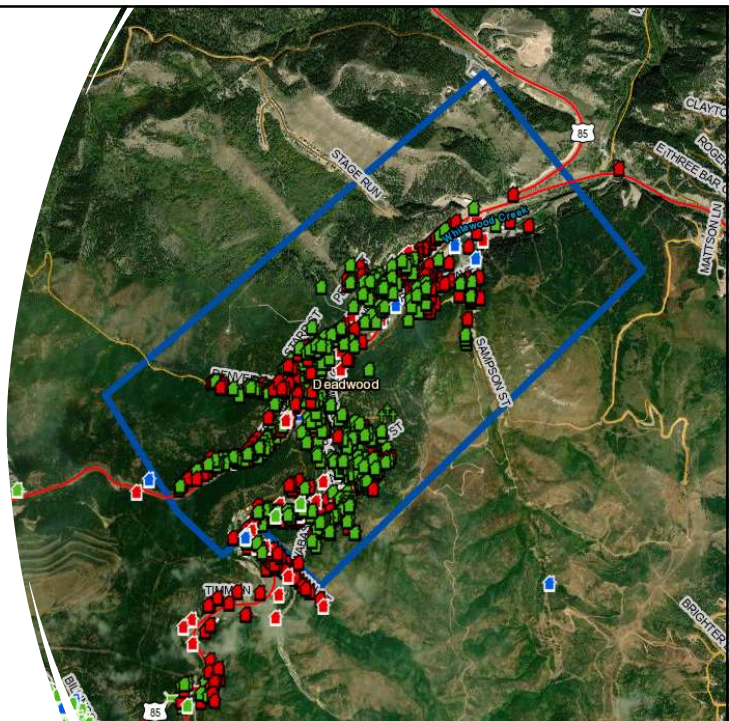
Results of 2022 Survey

- 2022 survey results within the district boundary
- 457 Contributing structures (green)
- 299 Noncontributing structures (red)



11

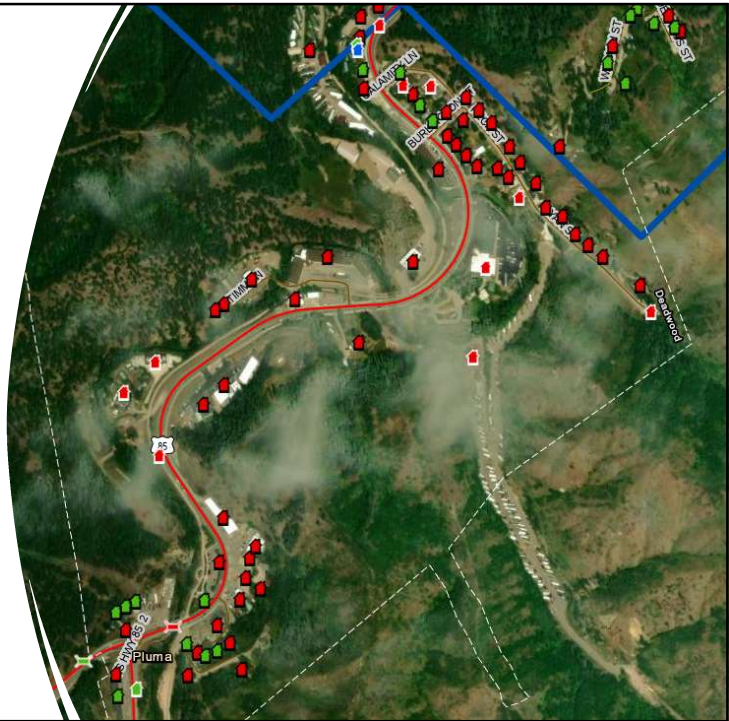
- Garages were counted as separate resources if they were clearly detached from houses
- Garages attached to houses are considered additions and not counted separately



12

Pluma

- The 2022 survey explored moving the boundary south of the current city limits towards Pluma
- There are approximately 4 non-contributing structures for every 1 contributing structure
- For National Register boundary expansion, at least a 2 contributing to every 1 non-contributing structure is recommended
- The expansion ratio is not met in this portion of the city



13

Contributing Elements of Setting

- Undeveloped hillsides
- Brick pavers
- Natural rock features
- Gulch topography
- Viewsheds



14

Retaining Walls

- A common resource that could be called out in the amendment as contributing to the district.
 - For example, amendment could indicate that all rock retaining walls dating to the Period of Significance with integrity are considered a contributing feature of the district.



15

Archaeology

- Should it be included as an area of significance?
 - If so, likely amend nomination to include significance under National Register Criterion D.



16

Points to Consider:



- 2022 survey inventory is a “snapshot” in time
 - Contributing versus non-contributing status can always be revisited / updated.
- Period of significance remains 1875 – 1939
- Areas of significance will generally remain same
 - Architecture, Commerce, Entertainment/Recreation, Transportation
 - Possible addition of Historic Archaeology

17

Request for Input from Commission

- Boundary expansion?
- Elements of setting (hillsides, pavers, viewsheds, etc.) called out in amendment?
- Retaining walls?
- Archaeological significance?



18