



February 19, 2024

Jared Schippers, PE
jared@albertsonengineering.com
Albertson Engineering Inc.
3202 West Main Street, Suite C
Rapid City SD 57702

RE: Whitewood Creek Restoration, Deadwood SD
Sites 1C, 2A, 2B, 3A, & 3B
Cost Proposal #07 – Phase 2B Electrical Trench Layout Change

Dear Jared,

We are pleased to provide you with the following cost proposal for cost associated with changing the layout of the electrical trench in Phase 2B. The switching module in the original plan was set directly adjacent to the new power pole at STA 8+58.8. Black Hills Energy requested to change the location of the switching module to approximately 100 feet to the west of the new power pole. The new location is directly behind Taco Johns. This change resulted in additional 4-inch and 6-inch conduit including additional fiberglass bends and sweeps. During the site meeting on February 13, 2024 the decision was made to eliminate the new retained equipment pad included in Cost Proposal #05 and incorporated in Change Order No. 3. The bollards included in Cost Proposal #05 and Change Order No. 3 will still be needed around the new electrical equipment.

Cost Proposal #07 below will deduct Item #1 – New Retained Equipment Pad from Cost Proposal #05, add back the 6 EA bollards and cost of additional conduit work performed by our electrical subcontractor HECI.

Table with 2 columns: Description and Amount. Rows include: Deduct New Retained Equipment Pad (\$17,021.22), Add 6 EA New Bollards (\$1192.02/EA) \$ 7,152.12, Add Electrical Conduit Change \$12,383.34, Total Increase for Cost Proposal #07: \$ 2,514.24

We appreciate the opportunity to provide this proposal and should you have any questions or comments please don't hesitate to contact our office.

Kind Regards,
Reid Hansen

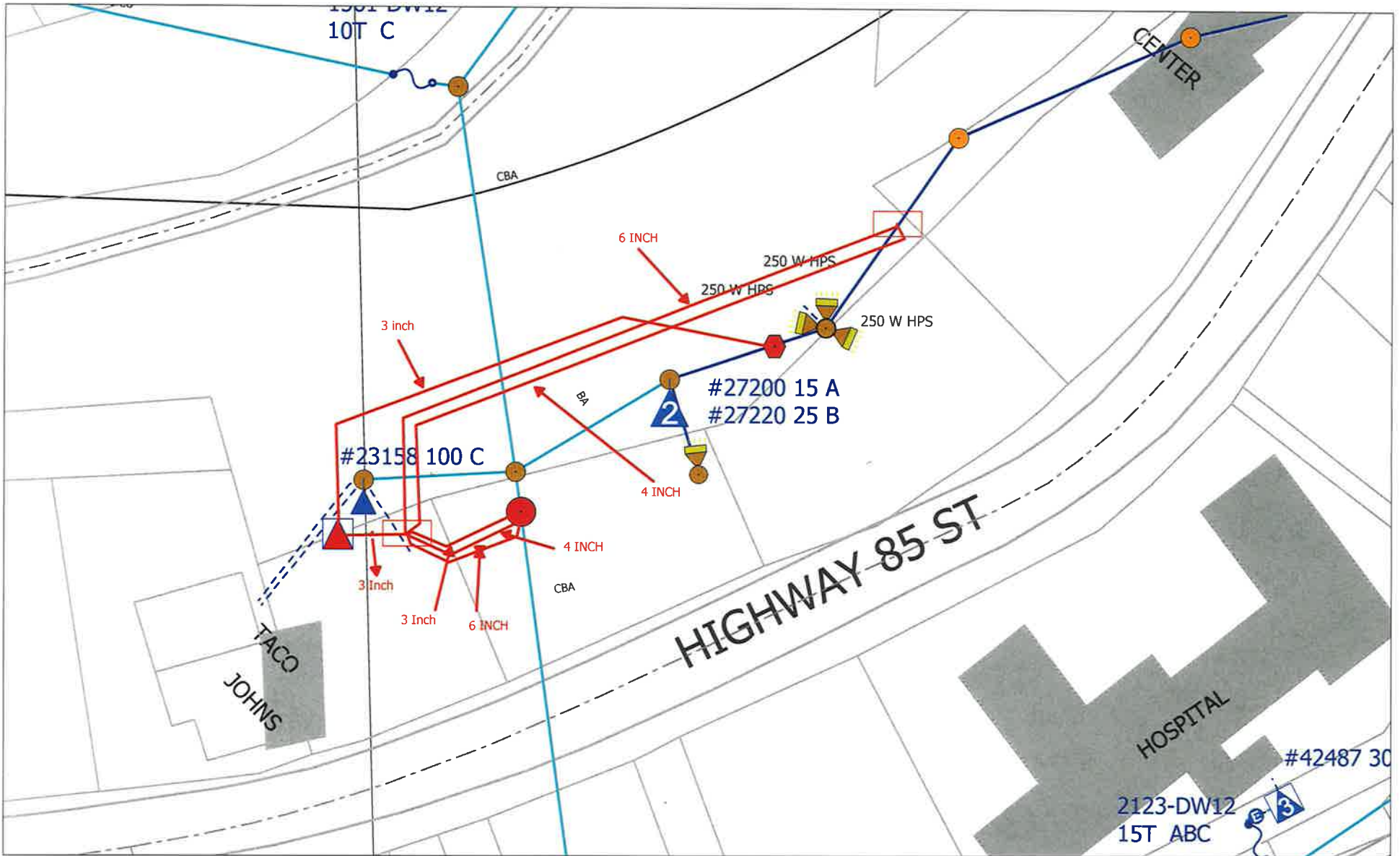
Reid Hansen, Project Manager



Safety • Quality • Communication • Timeliness

P.O. Box 9337 • Rapid City, SD 57709-
9337 Phone (605) 342-3787 • Fax (605)
348-4041
www.rcsconst.com





Time: 2/8/2024 8:53:42 AM

Session: c:\gtviewer\bhe_sde\bhe_sde.gtm

Black Hills Corporation Mobile GIS

Black Hills Corporation hereby disclaims any warranty, express or implied with regard to the accuracy or usefulness of Mobile GIS and its associated maps and records. Distribution of County Parcel Data outside of Black Hills Corporation is a violation of Black Hills Corporation's data sharing agreement.

[Extract dates] BHC: 01/27/2018, Pennington: 03/17/2010, Meade: 01/30/2009, Lawrence: 12/10/2009, Fall River: 06/30/2009, Custer 4/12/2011.