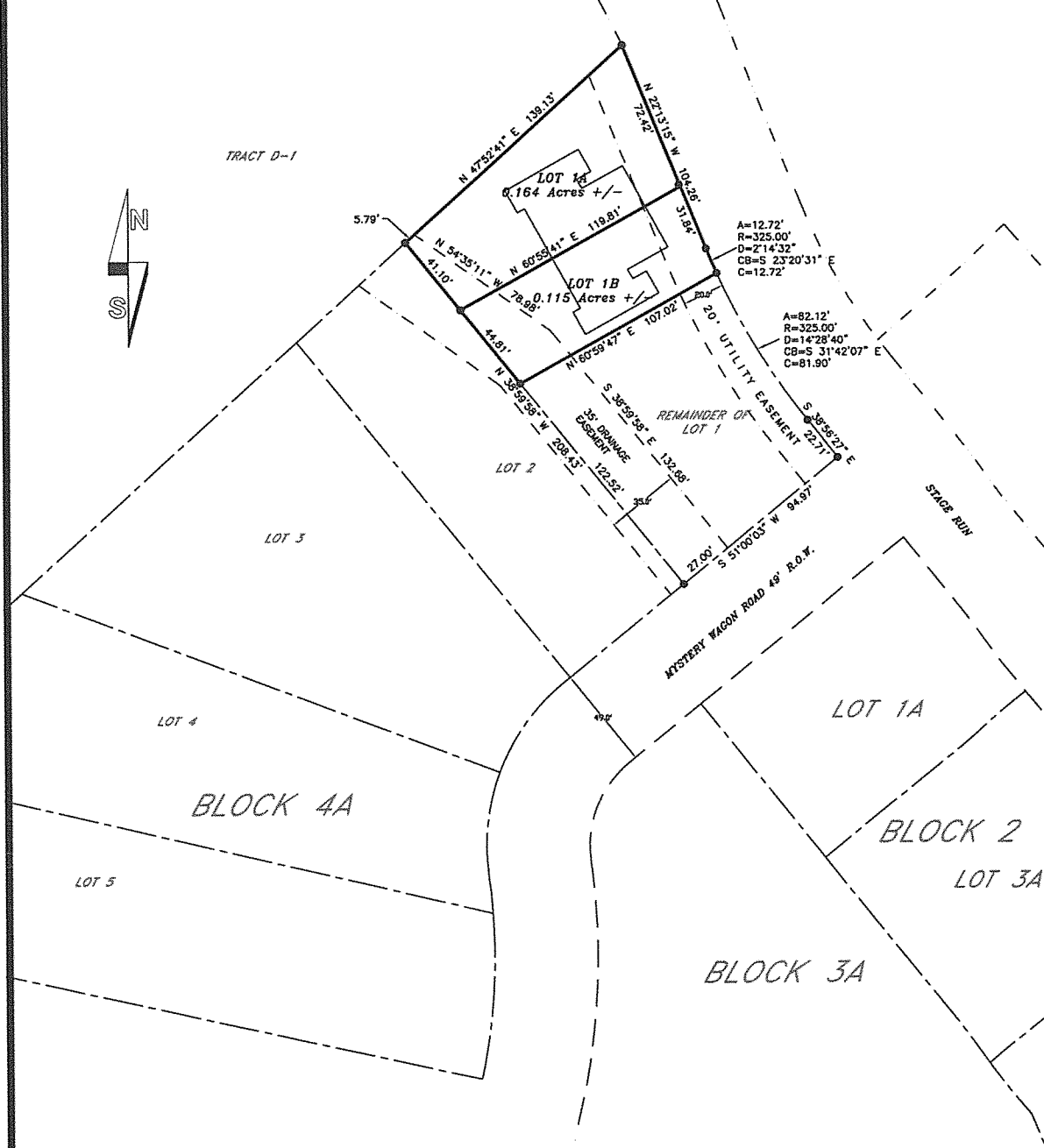


PLAT OF LOTS 1A AND 1B, BLOCK 4A OF PALISADES TRACT OF DEADWOOD STAGE
 RUN ADDITION TO THE CITY OF DEADWOOD
 LOCATED IN THE SW¹/₄ OF SECTION 14, THE SE¹/₄ OF SECTION 15, THE NE¹/₄NE¹/₄
 OF SECTION 22 AND THE N¹/₂NW¹/₄ OF SECTION 23, T5N, R3E, B.H.M.,
 CITY OF DEADWOOD, LAWRENCE COUNTY, SOUTH DAKOTA
 FORMERLY A PORTION OF LOT 1, BLOCK 4A



● REBAR & CAP (VREM L56577)

- NOTES:
- 1) OWNER/DEVELOPER
 W&P HOLDINGS LLC
 PO BOX 631
 DEADWOOD, SD 57732
 - 2) A 5' DRAINAGE & UTILITY EASEMENT IS HEREBY GRANTED
 ALONG SIDE AND REAR LOT LINES AND 10' ALONG THE FRONT
 UNLESS OTHERWISE NOTED



Prepared By:
PONDEROSA LAND SURVEYS, L.L.C.
 332A WEST MAIN ST.
 LEAD, SOUTH DAKOTA 57754
 (605) 722-3840

Date:	3/3/2021
Drawn By:	L. D. Vrem
Project No.:	21-116
Dwg. No.:	21-116.dwg