

June 5, 2024

Deadwood Historic Preservation
108 Sherman Street
Deadwood, SD 57732

Kevin Kuchenbecker and the Historic Preservation Committee:

This letter submittal represents the exterior finish selection for your review.

Historical Research of the building started before purchasing the building. Based on the lack of photos and information on the building, it clearly demonstrates that the building had very little significant impact within the community. Most people today recognize 745 Main Street as the KDSJ Radio Broadcast Building.

Based on photos, the building was built in the late 1930's and early 1940's. From the limited amount of information which has been available, the building was originally constructed as a Mortuary. The exterior is very similar to a Mortuary built in 1948 on State Street in Belle Fourche, South Dakota. The exterior of that building is similar, however, that building has living quarters above and is much larger. Most Mortuary's in smaller communities constructed in that era had limited distinguishable design features due to cost.

It appears KDSJ Radio used the building as it was originally built with limited changes. Our project architect, Dennis Egge, believes that the exterior of the building windows and door placements are original except the rear of the building which has been modified.

All this to say, we've spent some time trying to determine how this building looked over the years in order to honor it as we continue with our remodel. Kevin visited the site, his determination of visual historic architectural components included the circular overhang, the heavy stucco, and the historic windows.

I understand and appreciate the City's stance on wanting to honor the historical components of this building, this is my goal as well, while also considering the different public use of the space for our business and for other small businesses.

Window Replacement:

Following Deadwood's guidelines, every effort was made to repair the frames and replace the sashes by seeking out recommendations and bids from Pella, Marvin, and Spearfish Glass. All three companies visited the building and provided a thorough walkthrough to analyze the condition of the windows to provide a bid for window replacement.

Dave Krogman with Dash LLC (recommended by numerous sources for his previous work with Historic Deadwood Buildings) did a walkthrough to put together pricing for installation (Pella does not provide installers for commercial buildings). After his walkthrough, he suggested that the condition of the window frames would not support the installation of new sashes. Additionally, both Spearfish Glass and Marvin Windows came to the same conclusion that the conditions of the windows would not support the installation of new sashes. (Letters attached)

Dave Krogman with Dash LLC confirmed that windows could be replaced from the inside of the building with little to no damage to the existing stucco.

Our designer also confirmed this is a typical method used to replace windows with masonry or stone exterior without damage to the exterior finishes. The replacement windows would

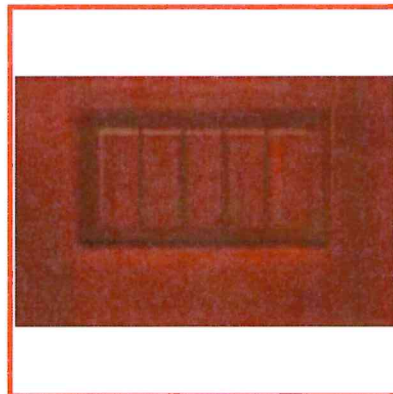
not include the extended wood sill, a new stucco sloped sill to drain water away from the window will be installed. This sill will have a bull nose edge matching the side. (Design attached)

Repair of the existing windows is not feasible, installing new windows will not degrade or destroy the visual historic architectural components. Therefore, we're seeking approval to proceed with the wood windows from Marvin or Pella. Spearfish Glass also provided a material and installation bid for a high performance vinyl window with a wood grain interior, that still meets the historic guidelines outlined by the City. The cost savings of their bid is something we would ask the committee to consider. (All bids attached)

Exterior Door Replacement

Below is an image of the exterior door I'm requesting.

Mahogany Arch Lite, 1/2 Lite 1 Panel Single Door, adding in a V-Grooved panel in the bottom half of the door.

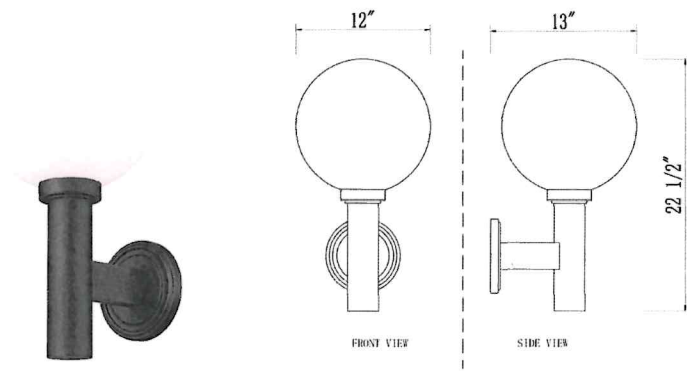


Exterior Finish

As mentioned previously, the heavy stucco texture was determined to be a visual historic architectural element of the building. There will be no changes to the existing stucco finish. Areas which have significant damage will be repaired, once those repairs have been made the exterior will be painted.

The colors for the Exterior are SW Olive Green for the walls, SW Pure White for the windows, parapet metal and round overhang and Cognac (shown above) for the front door. (Paint samples attached)

Two Exterior lights by the front door will be similar to the lights you see throughout Downtown Deadwood, screenshot below.



I'm grateful for the Historic Preservation Funds available to me for the exterior of the building. Inside, I'm making a hefty investment to bring this building back to life. I appreciate the committee's consideration in approving these items.



DASH, LLC

DAVE KROGMAN

DASH Construction

6815 Ridgeview Dr.
Black Hawk, SD 57718
(605) 691-4907

To whom it may concern; upon inspection of the property located at 745 Main street in Deadwood SD (the old radio station) we have concluded the following,

It is my understanding that Historic Preservation supports replacing the existing window sashes with new sashes while keeping the existing frames in place. After a thorough inspection, the existing frames would not support installing new sashes alone. The frames have rotted beyond repair, leading to replacement of the frames to successfully accept new sashes. A better option, in my opinion, would be to remove all the old windows, including frames, and purchase new frames and sashes for complete upgrade of windows in entire building. All work will be done so as not to disturb the exterior of the building to maintain acceptable historic appearance.

Thank You

Dave

**DASH WOODWORKING
AND CONSTRUCTION**

Phone: 605 691-4907
E-mail; dkrogman44@gmail.com



Dennis E <egge.denreb@gmail.com>

745 Main Street, Deadwood, SD

1 message

Randy Squier <RSquier@marvin.com>
To: "egge.denreb@gmail.com" <egge.denreb@gmail.com>

Thu, May 16, 2024 at 7:46 AM

Good morning, Dennis,

As requested, I inspected the windows at 745 Main Street in Deadwood. It is my opinion the windows are beyond repair. In many cases the wood is so deteriorated that the sills break apart by gently inspecting the frames. If you are forced to repair the windows, I believe you would be exceeding the cost of replacement and still need to replace the entire window down the road. No parts are available for the current windows.

Best Regards,

Randy Squier | Territory Manager

605-464-4669 | marvin.com





The Glass Shop
436 E. Colorado Blvd,
Spearfish SD 57783
T-605-642-3872
F-605-642-9712
www.theglassshop.net

To whom it may concern,

Having inspected the windows at 745 Main Street, Deadwood, SD, it is my professional opinion that they do not meet current energy standards. The severe deterioration of the condition of the sills and sashes, also leads me to advise that these windows be replaced with a more modern system to prevent further damage to the existing structure.

Respectfully submitted,

A handwritten signature in black ink, appearing to read "S. Gray", written over a horizontal line.

Steven Gray - Estimator
The Glass Shop
436 E. Colorado Blvd.,
Spearfish, SD



The Glass Shop
436 E. Colorado Blvd,
Spearfish SD 57783
T-605-642-3872
F-605-642-9712
www.theglassshop.net

PROPOSAL

Date: 5/17/2024

Project Name: 745 Main Street, Deadwood, SD

The Glass Shop, LLC is pleased to submit the following proposal to provide labor and materials to replace the sashes in fourteen windows at the above location with Simonton 5500 series insert windows with painted exterior finishes and interior wood grain finishes.

For the sum of\$21,395.00

Twenty-one Thousand Three Hundred Ninety-five dollars

Excludes any painting, demolition, interior or exterior trim work, sill repairs, or flashing.

Material will be furnished as specified above at the quoted price. Materials not indicated are not included. This proposal is valid for 30 days.

Thank you for the opportunity to quote your project.

Respectfully submitted,

A handwritten signature in black ink, appearing to read "Steve Gray".

Steve Gray

Accepted by: _____ Date:



The Glass Shop
 436 E. Colorado Blvd.
 Spearfish, SD 57783
 T (605) 642-3872
 F (605)-642-9712
 www.theglassshop.net

NO PRICE COPY
QUOTATION #2843139

Date Entered: 5/17/2024
 Date Printed: 5/17/2024
 Printed By: TheGlass Shop

SOLD TO:

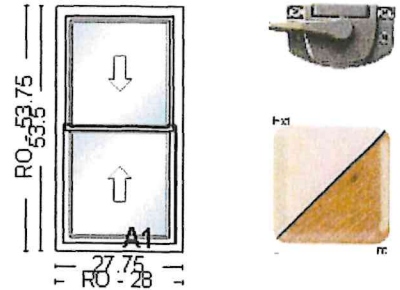
The Glass Shop
 436 E Colorado Blvd
 Spearfish, SD 57783
 Phone:
 Fax:

SHIP TO:

The Glass Shop
 436 E Colorado Blvd
 Spearfish, SD 57783
 Phone:
 Fax:

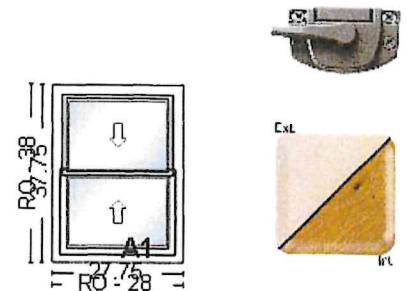
PO NUMBER	QUOTE NAME	PROJECT NAME
	745 Main St. Deadwood	Dennis Egge

LineItem #	Qty.	Description	
100-1	11	5500 Reflections Double Hung 27.75" X 53.5"	
RO:		Operation = Operating, Frame = Replacement, Ext.	
28 x 53.75		Color = Cream (Painted), Int. Color =	
Room ID:		Contemporary Oak Woodgrain, Glass Package =	
N/A		Standard Glass Options, ProSolar Low E, Argon,	
		Intercept, 3/4"IGU, Glass Thickness = 3/32 in - 3/32	
		out SS, Upper = Annealed, Lower = Annealed,	
		Locks = 1, Dark Bronze, Cam, Air Latches = 2, Sill	
		Extender, Balance Track Covers, Screen Coverage =	
		Full, Fiberglass, Extruded, U-Factor = 0.29, SHGC =	
		0.28, VT = 0.51, STC = 0, CPD Number = SBP-A-	
		44-56878-00001, Meets Energy Star Zones = None,	
		DP = 50, AAMA, TDI = WIN-1308, Florida	
		Approval Code = 5167	



Initials: _____

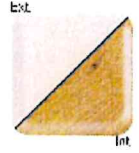
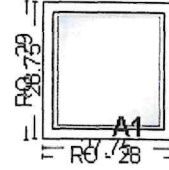
LineItem #	Qty.	Description	
200-1	1	5500 Reflections Double Hung 27.75" X 37.75"	
RO:		Operation = Operating, Frame = Replacement, Ext.	
28 x 38		Color = Cream (Painted), Int. Color =	
Room ID:		Contemporary Oak Woodgrain, Glass Package =	
N/A		Standard Glass Options, ProSolar Low E, Argon,	
		Intercept, 3/4"IGU, Glass Thickness = 3/32 in - 3/32	
		out SS, Upper = Annealed, Lower = Annealed,	
		Locks = 1, Dark Bronze, Cam, Air Latches = 2, Sill	
		Extender, Balance Track Covers, Screen Coverage =	
		Full, Fiberglass, Extruded, U-Factor = 0.29, SHGC =	
		0.28, VT = 0.51, STC = 0, CPD Number = SBP-A-	
		44-56878-00001, Meets Energy Star Zones = None,	
		DP = 50, AAMA, TDI = WIN-1308, Florida	
		Approval Code = 5167	



Initials: _____

LineItem #	Qty.	Description
300-1	1	5500 Reflections Picture 27.75" X 28.75" Operation = Fixed, Frame = Replacement, Ext. Color = Cream (Painted), Int. Color = Contemporary Oak Woodgrain, Glass Package = Standard Glass Options, ProSolar Low E, Argon, Intercept, 3/4"IGU, Glass Thickness = 3/32 in - 3/32 out SS, Annealed, Sill Extender, Screen Coverage = None, U-Factor = 0.27, SHGC = 0.3, VT = 0.55, STC = 0, CPD Number = SBP-A-43-25148-00001, Meets Energy Star Zones = None, DP = 65, AAMA, TDI = WIN-1270, Florida Approval Code = 5177

RO:
28 x 29
Room ID:
NA

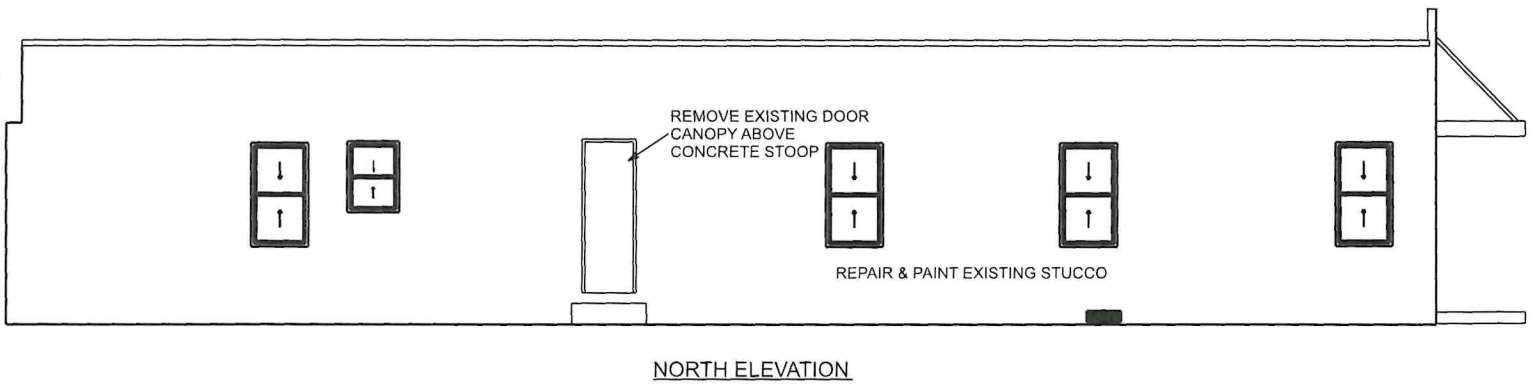
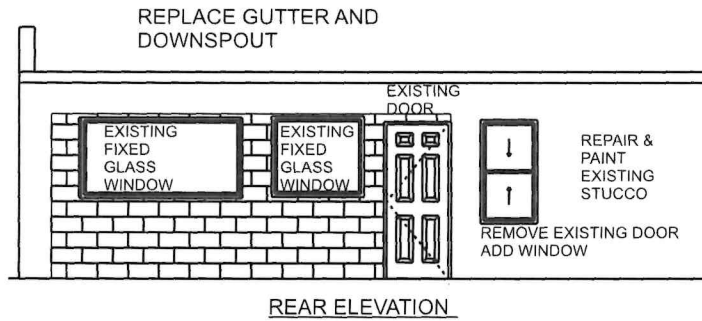
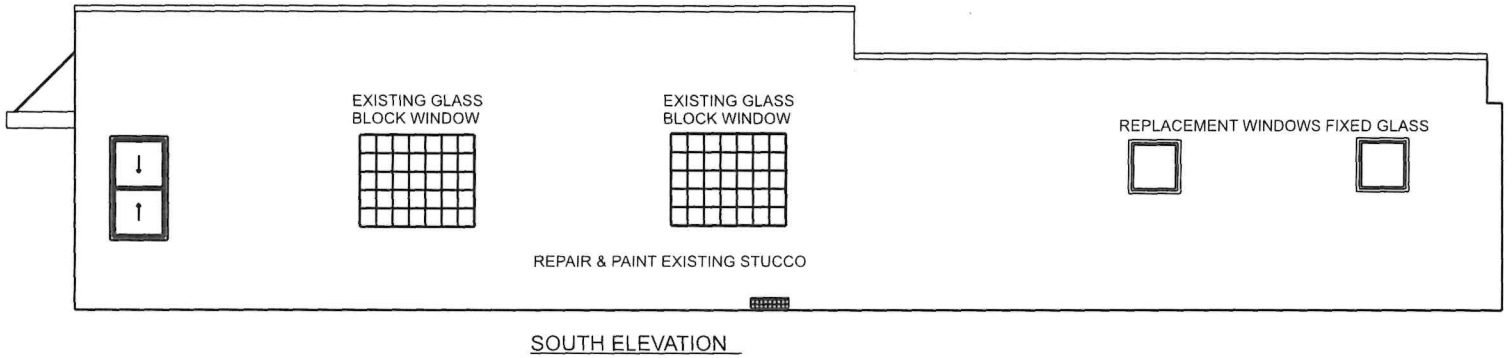
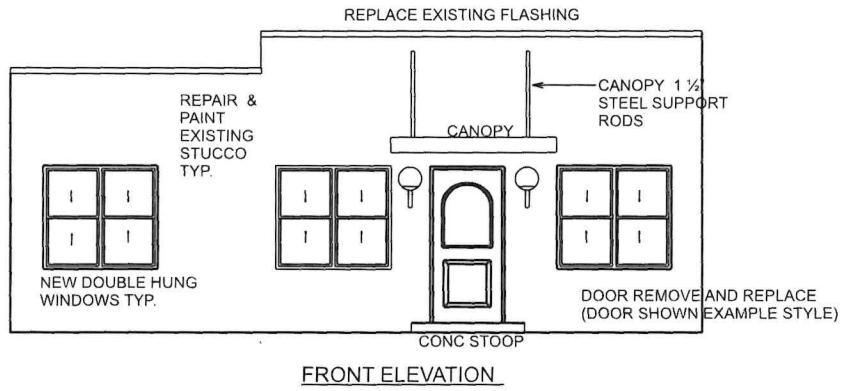


Initials: _____

13 Total Qty Units

Comment:

Submitted by: _____ Accepted by: _____ Date _____

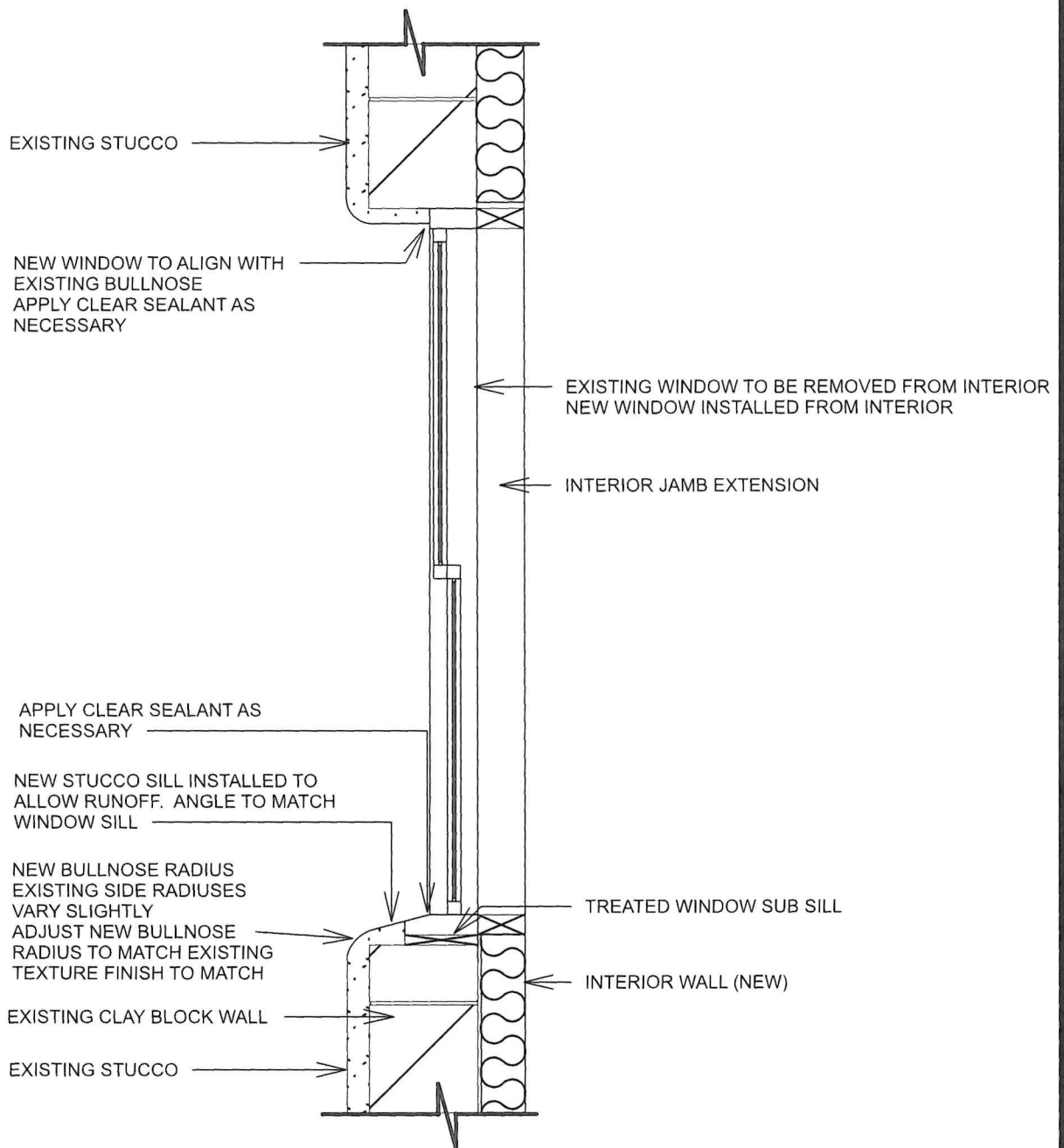


ELEVATION CONCEPT DRAWINGS

Not to scale

Dennis Egge
 Construction Consulting Services
 Design-Estimating-Management
 PO Box 455
 Belle Fourche, SD 57717
 970-454-1546

BLACK PINE REAL ESTATE OFFICE
 745 MAIN STREET DEADWOOD SD



DETAIL APPLIES TO ALL WOOD OR VINYL WINDOW REPLACEMENTS.
 ALL EXISTING WINDOW OPENINGS SHALL REMAIN APPROXIMATELY THE SAME
 WIDTH AND HEIGHT.
 WINDOW REPLACEMENT SHALL HAVE A MINIMUM IMPACT TO THE EXTERIOR FINISH

WINDOW REPLACEMENT DETAIL

Construction Consulting Services
 Design-Estimating-Management
 Belle Fourche, SD 57717
 Dennis Egge Cell 970-454-1546
 egge.denreb@gmail.com

PROJECT NAME: 745 MAIN STREET DEADWOOD SD
 BLACK PINE REAL ESTATE OFFICE

SCALE: 1" = 1'-0"

DATE: 6/3/2024

PAGE 1 of 1

Full Curl/Egge
745 Main St, Deadwood

Quote #: MANH8MM

A Proposal for Window and Door Products prepared for:

Job Site:
57732

Shipping Address:

KNECHT HOME CENTER - SPEARFISH
2905 4TH AVE
SPEARFISH, SD 57783-3299



LONDON HUMBRACHT
KNECHT HOME CENTER - SPEARFISH
320 WEST BOULAVARD
RAPID CITY, SD 57701
Phone: (605) 642-8839

Email:
london.humbracht@knechthomecenter.com

This report was generated on 5/28/2024 4:29:53 PM using the Marvin Order Management System, version 0004.08.01 (Current). Price in USD. Unit availability and price are subject to change. Dealer terms and conditions may apply.

Featuring products from:



UNIT SUMMARY

The following is a schedule of the windows and doors for this project. For additional unit details, please see Line Item Quotes.

Additional charges, tax or Terms and Conditions may apply. Detail pricing is per unit.

NUMBER OF LINES: 10

TOTAL UNIT QTY: 11

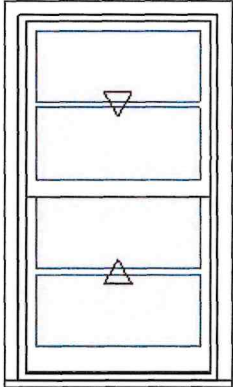
EXT NET PRICE: USD 21,874.83

LINE	MARK UNIT	PRODUCT LINE	ITEM	NET PRICE	QTY	EXTENDED NET PRICE
1	1 Wide 30" x 53"	Ultimate Wood	Double Hung RO 31" X 53 1/2"	1,624.53	1	1,624.53
2	2 Wide 61" x 55"	Ultimate Wood	Marvin Assembly RO 62" X 55 1/2"	3,321.84	1	3,321.84
3	2 Wide 61" x 53-1/4"	Ultimate Wood	Marvin Assembly RO 62" X 53 3/4"	3,252.01	1	3,252.01
4	2 Wide 61" x 53"	Ultimate Wood	Marvin Assembly RO 62" X 53 1/2"	3,251.27	1	3,251.27
5	1 Wide 29-1/2" x 53"	Ultimate Wood	Double Hung RO 30 1/2" X 53 1/2"	1,620.85	1	1,620.85
6	1 Wide 29-1/2" x 53"	Ultimate Wood	Double Hung RO 30 1/2" X 53 1/2"	1,620.85	1	1,620.85
7	1 Wide 29" x 53-1/2"	Ultimate Wood	Double Hung RO 30" X 54"	1,620.11	1	1,620.11
8	1 Wide 29-1/2" x 37-1/4"	Ultimate Wood	Double Hung RO 30 1/2" X 37 3/4"	1,445.82	1	1,445.82
9	1 Wide 29-1/2" x 54"	Ultimate Wood	Double Hung RO 30 1/2" X 54 1/2"	1,624.53	1	1,624.53
10	1 Wide 27" x 28-1/2" Picture	Ultimate Wood	Double Hung Picture 1 5/8 inch Sash RO 28" X 29"	1,246.51	2	2,493.02

LINE ITEM QUOTES

The following is a schedule of the windows and doors for this project. For additional unit details, please see Line Item Quotes. Additional charges, tax or Terms and Conditions may apply. Detail pricing is per unit.

Line #1	Mark Unit: 1 Wide 30" x 53"	Net Price:		1,624.53
Qty: 1		Ext. Net Price:	USD	1,624.53



As Viewed From The Exterior

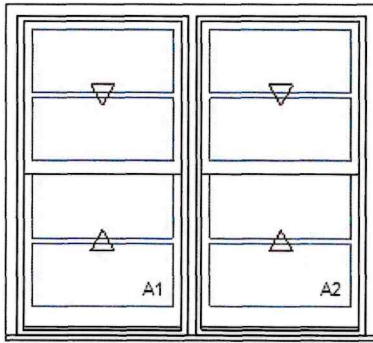
FS 30" X 53"
 OC 32 5/8" X 54 5/16"
 RO 31" X 53 1/2"
Egress Information
 No Egress Information available.
Performance Information
 U-Factor: 0.21
 Solar Heat Gain Coefficient: 0.26
 Visible Light Transmittance: 0.41
 Condensation Resistance: 68
 CPD Number: MAR-N-68-07880-00001
 ENERGY STAR: N, NC

Primed Pine Exterior
 Clear Interior Finish Pine Interior
 Ultimate Wood Double Hung
 Frame Size w/ Subsill
 30" X 53"
 Standard CN Height 22
 Rough Opening w/ Subsill
 31" X 53 1/2"
Top Sash
 Primed Pine Sash Exterior
 Clear Interior Finish Pine Sash Interior
 IG
 Low E2 w/Argon
 Black Perimeter and Spacer Bar
 7/8" SDL - With Spacer Bar - Black
 Rectangular - Special Cut 1W2H
 Primed Pine Ext - Clear Interior Finish Pine Int
 Ovolo Exterior Glazing Profile
 Ovolo Interior Glazing Profile
Bottom Sash
 Primed Pine Sash Exterior
 Clear Interior Finish Pine Sash Interior
 IG
 Low E2 w/Argon
 Black Perimeter and Spacer Bar
 7/8" SDL - With Spacer Bar - Black
 Rectangular - Special Cut 1W2H
 Primed Pine Ext - Clear Interior Finish Pine Int
 Ovolo Exterior Glazing Profile
 Ovolo Interior Glazing Profile
 Satin Taupe Sash Lock
 Beige Jamb Hardware
 Prep For Stool
 Wood Screen
 Bright Aluminum Wire
 Primed Pine Finish
 ***Screen/Combo Ship Loose
 2-Lite Storm Sash
 Primed Pine Storm Sash Finish
 ***Storm Sash Ship Loose
 6 9/16" Jamb
 Primed Pine BMC
 ***Exterior Casing Ship Loose
 Primed Pine Standard Subsill
 No Installation Method
*****Note: Unit Availability and Price is Subject to Change**

Line #2	Mark Unit: 2 Wide 61" x 55"	Net Price:		3,321.84
Qty: 1		Ext. Net Price:	USD	3,321.84



Primed Pine Exterior
 Clear Interior Finish Pine Interior
 2W1H - Rectangle Assembly
 Assembly Frame Size w/ Subsill
 61" X 55"
 Assembly Rough Opening w/ Subsill
 62" X 55 1/2"



As Viewed From The Exterior

FS 61" X 55"

OC 63 5/8" X 56 5/16"

RO 62" X 55 1/2"

Egress Information A1, A2

No Egress Information available.

Performance Information A1, A2

U-Factor: 0.21

Solar Heat Gain Coefficient: 0.26

Visible Light Transmittance: 0.41

Condensation Resistance: 68

CPD Number: MAR-N-68-07880-00001

ENERGY STAR: N, NC

Unit: A1

Ultimate Wood Double Hung

Basic Frame 30 1/2" X 53 29/32"

Rough Opening w/ Subsill

31 1/2" X 55 1/2"

Top Sash

Primed Pine Sash Exterior

Clear Interior Finish Pine Sash Interior

IG

Low E2 w/Argon

Black Perimeter and Spacer Bar

7/8" SDL - With Spacer Bar - Black

Rectangular - Special Cut 1W2H

Primed Pine Ext - Clear Interior Finish Pine Int

Ovolo Exterior Glazing Profile

Ovolo Interior Glazing Profile

Bottom Sash

Primed Pine Sash Exterior

Clear Interior Finish Pine Sash Interior

IG

Low E2 w/Argon

Black Perimeter and Spacer Bar

7/8" SDL - With Spacer Bar - Black

Rectangular - Special Cut 1W2H

Primed Pine Ext - Clear Interior Finish Pine Int

Ovolo Exterior Glazing Profile

Ovolo Interior Glazing Profile

Satin Taupe Sash Lock

Beige Jamb Hardware

Prep For Stool

Wood Screen

Bright Aluminum Wire

Primed Pine Finish

***Screen/Combo Ship Loose

2-Lite Storm Sash

Primed Pine Storm Sash Finish

***Storm Sash Ship Loose

Unit: A2

Ultimate Wood Double Hung

Basic Frame 30 1/2" X 53 29/32"

Rough Opening w/ Subsill

31 1/2" X 55 1/2"

Top Sash

Primed Pine Sash Exterior

Clear Interior Finish Pine Sash Interior

IG

Low E2 w/Argon

Black Perimeter and Spacer Bar

7/8" SDL - With Spacer Bar - Black

Rectangular - Special Cut 1W2H

Primed Pine Ext - Clear Interior Finish Pine Int

Ovolo Exterior Glazing Profile

Ovolo Interior Glazing Profile

Bottom Sash

Primed Pine Sash Exterior

Clear Interior Finish Pine Sash Interior

IG

Low E2 w/Argon

Black Perimeter and Spacer Bar

7/8" SDL - With Spacer Bar - Black

Rectangular - Special Cut 1W2H

Primed Pine Ext - Clear Interior Finish Pine Int

Ovolo Exterior Glazing Profile

Ovolo Interior Glazing Profile

Satin Taupe Sash Lock

Beige Jamb Hardware

Prep For Stool

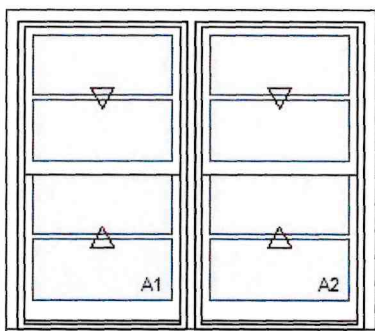
Wood Screen

Bright Aluminum Wire

Primed Pine Finish

***Screen/Combo Ship Loose
 2-Lite Storm Sash
 Primed Pine Storm Sash Finish
 ***Storm Sash Ship Loose
 Primed Pine Exterior Mull Cover
 Standard Mull Charge
 6 9/16" Jambs
 Primed Pine BMC
 ***Exterior Casing Ship Loose
 Primed Pine Standard Subsill
 No Installation Method
 ***Note: Non-Certified mull: check with local code officials for project
 specific requirements.
*****Note: Unit Availability and Price is Subject to Change**

Line #3	Mark Unit: 2 Wide 61" x 53-1/4"	Net Price:		3,252.01
Qty: 1		Ext. Net Price:	USD	3,252.01



As Viewed From The Exterior

FS 61" X 53 1/4"
 OC 63 5/8" X 54 9/16"
 RO 62" X 53 3/4"
Egress Information A1, A2
 No Egress Information available.
Performance Information A1, A2
 U-Factor: 0.21
 Solar Heat Gain Coefficient: 0.26
 Visible Light Transmittance: 0.41
 Condensation Resistance: 68
 CPD Number: MAR-N-68-07880-00001
 ENERGY STAR: N, NC

Primed Pine Exterior
 Clear Interior Finish Pine Interior
 2W1H - Rectangle Assembly
 Assembly Frame Sizew/ Subsill

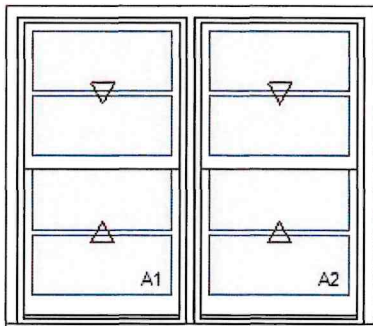
 61" X 53 1/4"
 Assembly Rough Opening w/ Subsill
 62" X 53 3/4"

 Unit: A1
 Ultimate Wood Double Hung
 Basic Frame 30 1/2" X 52 5/32"
 Rough Opening w/ Subsill
 31 1/2" X 53 3/4"
 Top Sash
 Primed Pine Sash Exterior
 Clear Interior Finish Pine Sash Interior
 IG
 Low E2 w/Argon
 Black Perimeter and Spacer Bar
 7/8" SDL - With Spacer Bar - Black
 Rectangular - Special Cut 1W2H
 Primed Pine Ext - Clear Interior Finish Pine Int
 Ovolo Exterior Glazing Profile
 Ovolo Interior Glazing Profile
 Bottom Sash
 Primed Pine Sash Exterior
 Clear Interior Finish Pine Sash Interior
 IG
 Low E2 w/Argon
 Black Perimeter and Spacer Bar
 7/8" SDL - With Spacer Bar - Black
 Rectangular - Special Cut 1W2H
 Primed Pine Ext - Clear Interior Finish Pine Int
 Ovolo Exterior Glazing Profile
 Ovolo Interior Glazing Profile
 Satin Taupe Sash Lock
 Beige Jamb Hardware
 Prep For Stool
 Wood Screen
 Bright Aluminum Wire
 Primed Pine Finish
 ***Screen/Combo Ship Loose
 2-Lite Storm Sash
 Primed Pine Storm Sash Finish
 ***Storm Sash Ship Loose

Unit: A2
 Ultimate Wood Double Hung
 Basic Frame 30 1/2" X 52 5/32"
 Rough Opening w/ Subsill

31 1/2" X 53 3/4"
 Top Sash
 Primed Pine Sash Exterior
 Clear Interior Finish Pine Sash Interior
 IG
 Low E2 w/Argon
 Black Perimeter and Spacer Bar
 7/8" SDL - With Spacer Bar - Black
 Rectangular - Special Cut 1W2H
 Primed Pine Ext - Clear Interior Finish Pine Int
 Ovolo Exterior Glazing Profile
 Ovolo Interior Glazing Profile
 Bottom Sash
 Primed Pine Sash Exterior
 Clear Interior Finish Pine Sash Interior
 IG
 Low E2 w/Argon
 Black Perimeter and Spacer Bar
 7/8" SDL - With Spacer Bar - Black
 Rectangular - Special Cut 1W2H
 Primed Pine Ext - Clear Interior Finish Pine Int
 Ovolo Exterior Glazing Profile
 Ovolo Interior Glazing Profile
 Satin Taupe Sash Lock
 Beige Jamb Hardware
 Prep For Stool
 Wood Screen
 Bright Aluminum Wire
 Primed Pine Finish
 ***Screen/Combo Ship Loose
 2-Lite Storm Sash
 Primed Pine Storm Sash Finish
 ***Storm Sash Ship Loose
 Primed Pine Exterior Mull Cover
 Standard Mull Charge
 6 9/16" Jamb
 Primed Pine BMC
 ***Exterior Casing Ship Loose
 Primed Pine Standard Subsill
 No Installation Method
 ***Note: Non-Certified mull: check with local code officials for project specific requirements.
 ***Note: Unit Availability and Price is Subject to Change

Line #4	Mark Unit: 2 Wide 61" x 53"	Net Price:		3,251.27
Qty: 1		Ext. Net Price:	USD	3,251.27



As Viewed From The Exterior

FS 61" X 53"
 OC 63 5/8" X 54 5/16"
 RO 62" X 53 1/2"
 Egress Information A1, A2
 No Egress Information available.

Primed Pine Exterior
 Clear Interior Finish Pine Interior
 2W1H - Rectangle Assembly
 Assembly Frame Sizew/ Subsill

61" X 53"
 Assembly Rough Opening w/ Subsill
 62" X 53 1/2"

Unit: A1
 Ultimate Wood Double Hung
 Basic Frame 30 1/2" X 51 29/32"
 Standard CN Height 22
 Rough Opening w/ Subsill
 31 1/2" X 53 1/2"
 Top Sash
 Primed Pine Sash Exterior
 Clear Interior Finish Pine Sash Interior
 IG
 Low E2 w/Argon
 Black Perimeter and Spacer Bar
 7/8" SDL - With Spacer Bar - Black

Performance Information A1, A2

U-Factor: 0.21
Solar Heat Gain Coefficient: 0.26
Visible Light Transmittance: 0.41
Condensation Resistance: 68
CPD Number: MAR-N-68-07880-00001
ENERGY STAR: N, NC

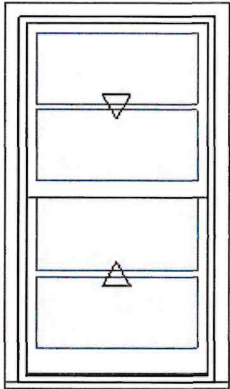
Rectangular - Special Cut 1W2H
Primed Pine Ext - Clear Interior Finish Pine Int
Ovolo Exterior Glazing Profile
Ovolo Interior Glazing Profile
Bottom Sash
Primed Pine Sash Exterior
Clear Interior Finish Pine Sash Interior
IG
Low E2 w/Argon
Black Perimeter and Spacer Bar
7/8" SDL - With Spacer Bar - Black
Rectangular - Special Cut 1W2H
Primed Pine Ext - Clear Interior Finish Pine Int
Ovolo Exterior Glazing Profile
Ovolo Interior Glazing Profile
Satin Taupe Sash Lock
Beige Jamb Hardware
Prep For Stool
Wood Screen
Bright Aluminum Wire
Primed Pine Finish
***Screen/Combo Ship Loose
2-Lite Storm Sash
Primed Pine Storm Sash Finish
***Storm Sash Ship Loose

Unit: A2

Ultimate Wood Double Hung
Basic Frame 30 1/2" X 51 29/32"
Standard CN Height 22
Rough Opening w/ Subsill
31 1/2" X 53 1/2"
Top Sash
Primed Pine Sash Exterior
Clear Interior Finish Pine Sash Interior
IG
Low E2 w/Argon
Black Perimeter and Spacer Bar
7/8" SDL - With Spacer Bar - Black
Rectangular - Special Cut 1W2H
Primed Pine Ext - Clear Interior Finish Pine Int
Ovolo Exterior Glazing Profile
Ovolo Interior Glazing Profile
Bottom Sash
Primed Pine Sash Exterior
Clear Interior Finish Pine Sash Interior
IG
Low E2 w/Argon
Black Perimeter and Spacer Bar
7/8" SDL - With Spacer Bar - Black
Rectangular - Special Cut 1W2H
Primed Pine Ext - Clear Interior Finish Pine Int
Ovolo Exterior Glazing Profile
Ovolo Interior Glazing Profile
Satin Taupe Sash Lock
Beige Jamb Hardware
Prep For Stool
Wood Screen
Bright Aluminum Wire
Primed Pine Finish
***Screen/Combo Ship Loose
2-Lite Storm Sash
Primed Pine Storm Sash Finish
***Storm Sash Ship Loose
Primed Pine Exterior Mull Cover
Standard Mull Charge
6 9/16" Jamb
Primed Pine BMC
***Exterior Casing Ship Loose
Primed Pine Standard Subsill
No Installation Method
***Note: Non-Certified mull: check with local code officials for project

specific requirements.
*****Note: Unit Availability and Price is Subject to Change**

Line #5	Mark Unit: 1 Wide 29-1/2" x 53"	Net Price:		1,620.85
Qty: 1		Ext. Net Price:	USD	1,620.85



As Viewed From The Exterior

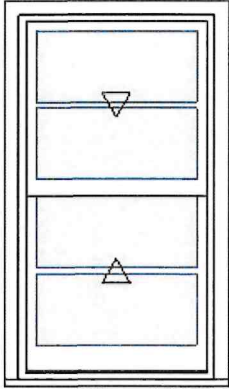
FS 29 1/2" X 53"
 OC 32 1/8" X 54 5/16"
 RO 30 1/2" X 53 1/2"
Egress Information
 No Egress Information available.
Performance Information
 U-Factor: 0.21
 Solar Heat Gain Coefficient: 0.26
 Visible Light Transmittance: 0.41
 Condensation Resistance: 68
 CPD Number: MAR-N-68-07880-00001
 ENERGY STAR: N, NC

Primed Pine Exterior
 Clear Interior Finish Pine Interior
 Ultimate Wood Double Hung
 Frame Size w/ Subsill
 29 1/2" X 53"
 Standard CN Height 22
 Rough Opening w/ Subsill
 30 1/2" X 53 1/2"
 Top Sash
 Primed Pine Sash Exterior
 Clear Interior Finish Pine Sash Interior
 IG
 Low E2 w/Argon
 Black Perimeter and Spacer Bar
 7/8" SDL - With Spacer Bar - Black
 Rectangular - Special Cut 1W2H
 Primed Pine Ext - Clear Interior Finish Pine Int
 Ovolo Exterior Glazing Profile
 Ovolo Interior Glazing Profile
 Bottom Sash
 Primed Pine Sash Exterior
 Clear Interior Finish Pine Sash Interior
 IG
 Low E2 w/Argon
 Black Perimeter and Spacer Bar
 7/8" SDL - With Spacer Bar - Black
 Rectangular - Special Cut 1W2H
 Primed Pine Ext - Clear Interior Finish Pine Int
 Ovolo Exterior Glazing Profile
 Ovolo Interior Glazing Profile
 Satin Taupe Sash Lock
 Beige Jamb Hardware
 Prep For Stool
 Wood Screen
 Bright Aluminum Wire
 Primed Pine Finish
 ***Screen/Combo Ship Loose
 2-Lite Storm Sash
 Primed Pine Storm Sash Finish
 ***Storm Sash Ship Loose
 6 9/16" Jamb
 Primed Pine BMC
 ***Exterior Casing Ship Loose
 Primed Pine Standard Subsill
 No Installation Method
*****Note: Unit Availability and Price is Subject to Change**

Line #6	Mark Unit: 1 Wide 29-1/2" x 53"	Net Price:		1,620.85
Qty: 1		Ext. Net Price:	USD	1,620.85



Primed Pine Exterior
 Clear Interior Finish Pine Interior
 Ultimate Wood Double Hung
 Frame Size w/ Subsill
 29 1/2" X 53"
 Standard CN Height 22
 Rough Opening w/ Subsill
 30 1/2" X 53 1/2"
 Top Sash
 Primed Pine Sash Exterior
 Clear Interior Finish Pine Sash Interior

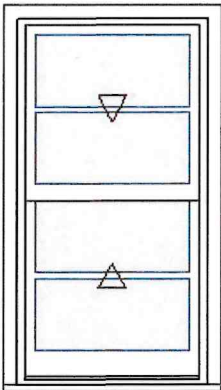


As Viewed From The Exterior

FS 29 1/2" X 53"
 OC 32 1/8" X 54 5/16"
 RO 30 1/2" X 53 1/2"
Egress Information
 No Egress Information available.
Performance Information
 U-Factor: 0.21
 Solar Heat Gain Coefficient: 0.26
 Visible Light Transmittance: 0.41
 Condensation Resistance: 68
 CPD Number: MAR-N-68-07880-00001
 ENERGY STAR: N, NC

IG
 Low E2 w/Argon
 Black Perimeter and Spacer Bar
 7/8" SDL - With Spacer Bar - Black
 Rectangular - Special Cut 1W2H
 Primed Pine Ext - Clear Interior Finish Pine Int
 Ovolo Exterior Glazing Profile
 Ovolo Interior Glazing Profile
 Bottom Sash
 Primed Pine Sash Exterior
 Clear Interior Finish Pine Sash Interior
 IG
 Low E2 w/Argon
 Black Perimeter and Spacer Bar
 7/8" SDL - With Spacer Bar - Black
 Rectangular - Special Cut 1W2H
 Primed Pine Ext - Clear Interior Finish Pine Int
 Ovolo Exterior Glazing Profile
 Ovolo Interior Glazing Profile
 Satin Taupe Sash Lock
 Beige Jamb Hardware
 Prep For Stool
 Wood Screen
 Bright Aluminum Wire
 Primed Pine Finish
 ***Screen/Combo Ship Loose
 2-Lite Storm Sash
 Primed Pine Storm Sash Finish
 ***Storm Sash Ship Loose
 6 9/16" Jamb
 Primed Pine BMC
 ***Exterior Casing Ship Loose
 Primed Pine Standard Subsill
 No Installation Method
*****Note: Unit Availability and Price is Subject to Change**

Line #7	Mark Unit: 1 Wide 29" x 53-1/2"	Net Price:		1,620.11
Qty: 1		Ext. Net Price:	USD	1,620.11



As Viewed From The Exterior

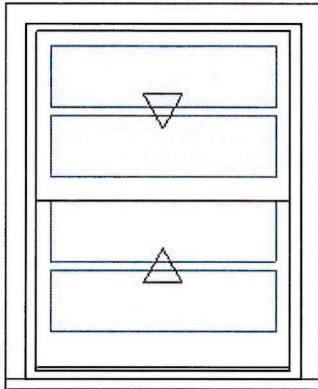
FS 29" X 53 1/2"
 OC 31 5/8" X 54 13/16"
 RO 30" X 54"
Egress Information
 No Egress Information available.
Performance Information
 U-Factor: 0.21
 Solar Heat Gain Coefficient: 0.26
 Visible Light Transmittance: 0.41
 Condensation Resistance: 68

Primed Pine Exterior
 Clear Interior Finish Pine Interior
 Ultimate Wood Double Hung
 Frame Size w/ Subsill
 29" X 53 1/2"
 Rough Opening w/ Subsill
 30" X 54"
 Top Sash
 Primed Pine Sash Exterior
 Clear Interior Finish Pine Sash Interior
 IG
 Low E2 w/Argon
 Black Perimeter and Spacer Bar
 7/8" SDL - With Spacer Bar - Black
 Rectangular - Special Cut 1W2H
 Primed Pine Ext - Clear Interior Finish Pine Int
 Ovolo Exterior Glazing Profile
 Ovolo Interior Glazing Profile
 Bottom Sash
 Primed Pine Sash Exterior
 Clear Interior Finish Pine Sash Interior
 IG
 Low E2 w/Argon
 Black Perimeter and Spacer Bar
 7/8" SDL - With Spacer Bar - Black
 Rectangular - Special Cut 1W2H
 Primed Pine Ext - Clear Interior Finish Pine Int
 Ovolo Exterior Glazing Profile
 Ovolo Interior Glazing Profile
 Satin Taupe Sash Lock
 Beige Jamb Hardware

CPD Number: MAR-N-68-07880-00001
 ENERGY STAR: N, NC

Prep For Stool
 Wood Screen
 Bright Aluminum Wire
 Primed Pine Finish
 ***Screen/Combo Ship Loose
 2-Lite Storm Sash
 Primed Pine Storm Sash Finish
 ***Storm Sash Ship Loose
 6 9/16" Jamb
 Primed Pine BMC
 ***Exterior Casing Ship Loose
 Primed Pine Standard Subsill
 No Installation Method
*****Note: Unit Availability and Price is Subject to Change**

Line #8	Mark Unit: 1 Wide 29-1/2" x 37-1/4"	Net Price:		1,445.82
Qty: 1		Ext. Net Price:	USD	1,445.82

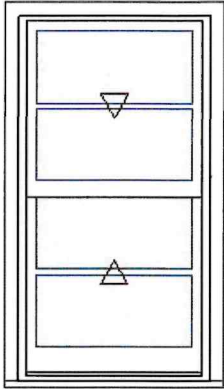


As Viewed From The Exterior

FS 29 1/2" X 37 1/4"
 OC 32 1/8" X 38 9/16"
 RO 30 1/2" X 37 3/4"
Egress Information
 No Egress Information available.
Performance Information
 U-Factor: 0.21
 Solar Heat Gain Coefficient: 0.26
 Visible Light Transmittance: 0.41
 Condensation Resistance: 68
 CPD Number: MAR-N-68-07880-00001
 ENERGY STAR: N, NC

Primed Pine Exterior
 Clear Interior Finish Pine Interior
 Ultimate Wood Double Hung
 Frame Size w/ Subsill
 29 1/2" X 37 1/4"
 Rough Opening w/ Subsill
 30 1/2" X 37 3/4"
 Top Sash
 Primed Pine Sash Exterior
 Clear Interior Finish Pine Sash Interior
 IG
 Low E2 w/Argon
 Black Perimeter and Spacer Bar
 7/8" SDL - With Spacer Bar - Black
 Rectangular - Special Cut 1W2H
 Primed Pine Ext - Clear Interior Finish Pine Int
 Ovolo Exterior Glazing Profile
 Ovolo Interior Glazing Profile
 Bottom Sash
 Primed Pine Sash Exterior
 Clear Interior Finish Pine Sash Interior
 IG
 Low E2 w/Argon
 Black Perimeter and Spacer Bar
 7/8" SDL - With Spacer Bar - Black
 Rectangular - Special Cut 1W2H
 Primed Pine Ext - Clear Interior Finish Pine Int
 Ovolo Exterior Glazing Profile
 Ovolo Interior Glazing Profile
 Satin Taupe Sash Lock
 Beige Jamb Hardware
 Prep For Stool
 Wood Screen
 Bright Aluminum Wire
 Primed Pine Finish
 ***Screen/Combo Ship Loose
 2-Lite Storm Sash
 Primed Pine Storm Sash Finish
 ***Storm Sash Ship Loose
 6 9/16" Jamb
 Primed Pine BMC
 ***Exterior Casing Ship Loose
 Primed Pine Standard Subsill
 No Installation Method
*****Note: Unit Availability and Price is Subject to Change**

Line #9	Mark Unit: 1 Wide 29-1/2" x 54"	Net Price:		1,624.53
Qty: 1		Ext. Net Price:	USD	1,624.53

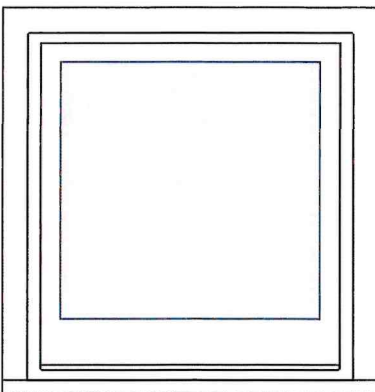


As Viewed From The Exterior

FS 29 1/2" X 54"
 OC 32 1/8" X 55 5/16"
 RO 30 1/2" X 54 1/2"
Egress Information
 No Egress Information available.
Performance Information
 U-Factor: 0.21
 Solar Heat Gain Coefficient: 0.26
 Visible Light Transmittance: 0.41
 Condensation Resistance: 68
 CPD Number: MAR-N-68-07880-00001
 ENERGY STAR: N, NC

Primed Pine Exterior
 Clear Interior Finish Pine Interior
 Ultimate Wood Double Hung
 Frame Size w/ Subsill
 29 1/2" X 54"
 Rough Opening w/ Subsill
 30 1/2" X 54 1/2"
 Top Sash
 Primed Pine Sash Exterior
 Clear Interior Finish Pine Sash Interior
 IG
 Low E2 w/Argon
 Black Perimeter and Spacer Bar
 7/8" SDL - With Spacer Bar - Black
 Rectangular - Special Cut 1W2H
 Primed Pine Ext - Clear Interior Finish Pine Int
 Ovolo Exterior Glazing Profile
 Ovolo Interior Glazing Profile
 Bottom Sash
 Primed Pine Sash Exterior
 Clear Interior Finish Pine Sash Interior
 IG
 Low E2 w/Argon
 Black Perimeter and Spacer Bar
 7/8" SDL - With Spacer Bar - Black
 Rectangular - Special Cut 1W2H
 Primed Pine Ext - Clear Interior Finish Pine Int
 Ovolo Exterior Glazing Profile
 Ovolo Interior Glazing Profile
 Satin Taupe Sash Lock
 Beige Jamb Hardware
 Prep For Stool
 Wood Screen
 Bright Aluminum Wire
 Primed Pine Finish
 ***Screen/Combo Ship Loose
 2-Lite Storm Sash
 Primed Pine Storm Sash Finish
 ***Storm Sash Ship Loose
 6 9/16" Jamb
 Primed Pine BMC
 ***Exterior Casing Ship Loose
 Primed Pine Standard Subsill
 No Installation Method
*****Note: Unit Availability and Price is Subject to Change**

Line #10	Mark Unit: 1 Wide 27" x 28-1/2" Picture	Net Price:		1,246.51
Qty: 2		Ext. Net Price:	USD	2,493.02



As Viewed From The Exterior

Primed Pine Exterior
 Clear Interior Finish Pine Interior
 Ultimate Wood Double Hung Picture 1 5/8 inch Sash
 Frame Size w/ Subsill
 27" X 28 1/2"
 Rough Opening w/ Subsill
 28" X 29"
 Primed Pine Sash Exterior
 Clear Interior Finish Pine Sash Interior
 IG - 1 Lite
 Low E2 w/Argon
 Black Perimeter Bar
 Ovolo Exterior Glazing Profile
 Ovolo Interior Glazing Profile
 1-Lite Storm Sash
 Primed Pine Storm Sash Finish
 ***Storm Sash Ship Loose
 6 9/16" Jamb
 Primed Pine BMC
 ***Exterior Casing Ship Loose
 Primed Pine Standard Subsill

FS 27" X 28 1/2"
OC 29 5/8" X 29 13/16"
RO 28" X 29"

No Installation Method

*****Note: Unit Availability and Price is Subject to Change**

Egress Information

No Egress Information available.

Performance Information

Product Performance Information is currently unavailable in the OMS for this product and glazing option. To request product performance information not in the OMS, contact your Marvin representative or submit an Assistance Request.

Project Subtotal Net Price: USD	21,874.83
0.000% Sales Tax: USD	0.00
Project Total Net Price: USD	21,874.83

PRODUCT AND PERFORMANCE INFORMATION

NFRC Ratings:

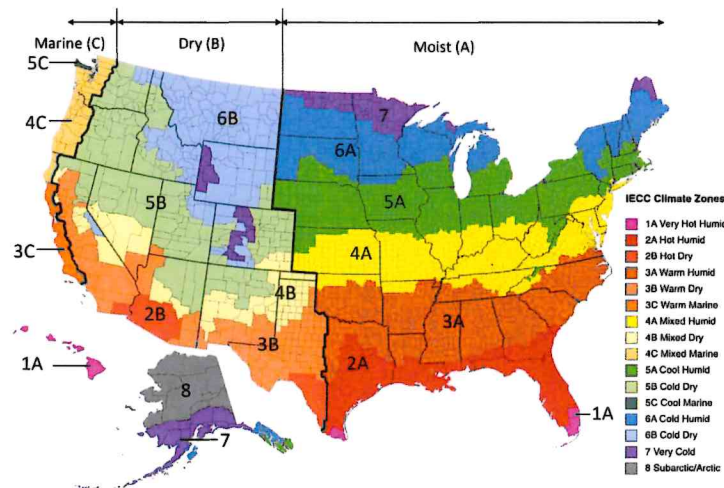
NFRC energy ratings may vary depending on the exact configuration of glass thickness used on the unit. NFRC energy values and ratings may change over time due to ongoing product changes, updated test results or requirements. NFRC values and ratings are finalized on the date of manufacture.

The National Fenestration Rating Council (NFRC) has developed and operates a uniform rating system for the energy performance of fenestration products, including windows, doors and skylights. For additional information regarding this rating system, see www.nfrc.org.

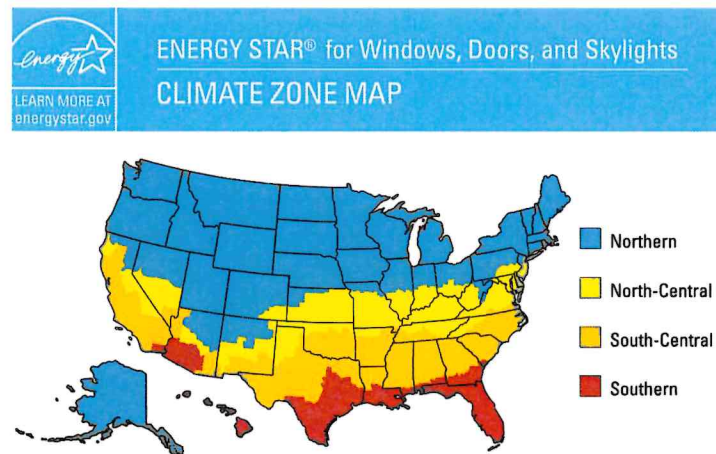
Code (residential, building or energy) Compliance:

Determining the suitability and compliance with state, provincial, local, or other applicable building codes or standards, including energy codes, is the responsibility of the buyer, user, architect, contractor, installer, and/or other construction professional.

2021 IECC Climate Zone Map:



ENERGY STAR Version 7 Climate Zone Map:



PURCHASE APPROVAL/SIGN OFF

Project Subtotal Net Price: USD 21,874.83
0.000% Sales Tax: USD 0.00
Project Total Net Price: USD 21,874.83

I have reviewed all line item quotes in detail and agree that the product specifications and pricing are accurate, and I approve the project for order. I acknowledge that additional charges, tax or Terms and Conditions may apply.

Seller: _____

Buyer: _____



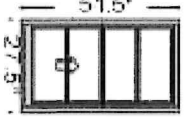
Contract - Detailed

Pella Window and Door Showroom of Rapid City
 2704 Plant Street
 Rapid City, SD 57702
 Phone: (605) 341-2045 Fax: (605) 341-1689

Sales Rep Name: Weber, Cole
 Sales Rep Phone: 605-641-2187
 Sales Rep Fax:
 Sales Rep E-Mail: coleweber@heartlandpella.com

Customer Information	Project/Delivery Address	Order Information
All Bidders - SD Commercial Projects 0000 RAPID CITY, SD 57702 Primary Phone: (605) 3916883 Mobile Phone: Fax Number: E-Mail: shaneregelin@heartlandpella.com Contact Name: Great Plains #: 4659906 Customer Number: 1004587118 Customer Account: 1001333214	Lucky Radio Station Lot # County: Owner Name: Owner Phone:	Quote Name: Lucky Radio Station - Reserve Order Number: 233 Quote Number: 18139493 Order Type: Non-Installed Sales Wall Depth: Payment Terms: C.O.D. Tax Code: 3DEADWOODSD Cust Delivery Date: None Quoted Date: 5/2/2024 Contracted Date: Booked Date: Customer PO #:

Line #	Location:	Attributes
10	None Assigned	



PK #
2165

Viewed From Exterior

Pella® Reserve, Traditional Single Hung, 27.5 X 51.5

1: 27.551,5 Single Hung, Equal
 Frame Size: 27 1/2 X 51 1/2
 General Information: Standard, Luxury, Wood, Pine, 4 3/8", 4 3/16"
 Exterior Color / Finish: Primed, Primed Wood
 Interior Color / Finish: Primed Interior
 Sash / Panel: Putty Glaze, Ogee, Standard, No Sash Lugs
 Glass: Insulated Dual Low-E Advanced Low-E Insulating Glass Argon Non High Altitude
 Hardware Options: Cam-Action Lock, White, No Window Opening Control Device, No Limited Opening Hardware, Order Sash Lift, No Integrated Sensor
 Screen: Half Screen, Standard EnduraClad, Black, Standard, InView™
 Performance Information: U-Factor 0.29, SHGC 0.25, VLT 0.47, CPD PEL-N-234-01143-00001, Performance Class CW, PG 45, Calculated Positive DP Rating 45, Calculated Negative DP Rating 45, Year Rated 08/11, Clear Opening Width 24.125, Clear Opening Height 21.312, Clear Opening Area 3.5705, Egress Does not meet typical United States egress, but may comply with local code requirements
 Grille: ILT, No Custom Grille, 7/8", Traditional (1W2H / 1W2H), Putty Glaze, Ogee
 Wrapping Information: No Exterior Trim, 4 3/16", 4 3/8", Factory Applied, Pella Recommended Clearance, Perimeter Length = 158".

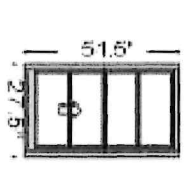
Item Price	Qty	Ext'd Price
\$1,018.73	2	\$2,037.46

Rough Opening: 28 - 1/4" X 52 - 1/4"

Line #	Location:	Attributes	Item Price	Qty	Ext'd Price
15	None Assigned				

Pella® Reserve, Traditional Single Hung, 27.5 X 51.5

Item Price	Qty	Ext'd Price
\$1,018.73	1	\$1,018.73



PK #
2165

Viewed From Exterior

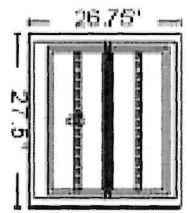
1: 27.5x51.5 Single Hung, Equal
 Frame Size: 27 1/2 X 51 1/2
 General Information: Standard, Luxury, Wood, Pine, 4 3/8", 4 3/16"
 Exterior Color / Finish: Primed, Primed Wood
 Interior Color / Finish: Primed Interior
 Sash / Panel: Putty Glaze, Ogee, Standard, No Sash Lugs
 Glass: Insulated Dual Low-E Advanced Low-E Insulating Glass Argon Non High Altitude
 Hardware Options: Cam-Action Lock, White, No Window Opening Control Device, No Limited Opening Hardware, Order Sash Lift, No Integrated Sensor
 Screen: Half Screen, Standard EnduraClad, Black, Standard, InView™
 Performance Information: U-Factor 0.29, SHGC 0.25, VLT 0.47, CPD PEL-N-234-01143-00001, Performance Class CW, PG 45, Calculated Positive DP Rating 45, Calculated Negative DP Rating 45, Year Rated 08111, Clear Opening Width 24.125, Clear Opening Height 21.312, Clear Opening Area 3.5705, Egress Does not meet typical United States egress, but may comply with local code requirements
 Grille: ILT, No Custom Grille, 7/8", Traditional (1W2H / 1W2H), Putty Glaze, Ogee
 Wrapping Information: No Exterior Trim, 4 3/16", 4 3/8", Factory Applied, Pella Recommended Clearance, Perimeter Length = 158".

Rough Opening: 28 - 1/4" X 52 - 1/4"

Line #	Location:	Attributes	Item Price	Qty	Ext'd Price
20	None Assigned				

Pella® Reserve, Traditional Single Hung, 27.5 X 26.75

Item Price	Qty	Ext'd Price
\$1,411.00	1	\$1,411.00



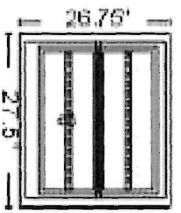
PK #
2165

Viewed From Exterior

1: Non-Standard Size Single Hung, Equal
 Frame Size: 27 1/2 X 26 3/4
 General Information: Standard, Luxury, Wood, Pine, 4 3/8", 4 3/16"
 Exterior Color / Finish: Primed, Primed Wood
 Interior Color / Finish: Primed Interior
 Sash / Panel: Putty Glaze, Ogee, Standard, No Sash Lugs
 Glass: Insulated Dual Low-E Advanced Low-E Insulating Glass Argon Non High Altitude
 Hardware Options: Cam-Action Lock, White, No Window Opening Control Device, No Limited Opening Hardware, Order Sash Lift, No Integrated Sensor
 Screen: Half Screen, Standard EnduraClad, Black, Standard, InView™
 Performance Information: U-Factor 0.29, SHGC 0.25, VLT 0.47, CPD PEL-N-234-01143-00001, Performance Class CW, PG 45, Calculated Positive DP Rating 45, Calculated Negative DP Rating 45, Year Rated 08111, Clear Opening Width 24.125, Clear Opening Height 8.937, Clear Opening Area 1.497258, Egress Does not meet typical United States egress, but may comply with local code requirements
 Grille: ILT, No Custom Grille, 7/8", Traditional (1W2H / 1W2H), Putty Glaze, Ogee
 Wrapping Information: No Exterior Trim, 4 3/16", 4 3/8", Factory Applied, Pella Recommended Clearance, Perimeter Length = 109".

Rough Opening: 28 - 1/4" X 27 - 1/2"

Line #	Location:	Attributes	Item Price	Qty	Ext'd Price
25	None Assigned				



PK # 2165

Viewed From Exterior

Pella® Reserve, Traditional Single Hung, 27.5 X 26.75

1: Non-Standard Size Single Hung, Equal
 Frame Size: 27 1/2 X 26 3/4
 General Information: Standard, Luxury, Wood, Pine, 4 3/8", 4 3/16"
 Exterior Color / Finish: Primed, Primed Wood
 Interior Color / Finish: Primed Interior
 Sash / Panel: Putty Glaze, Ogee, Standard, No Sash Lugs
 Glass: Insulated Dual Low-E Advanced Low-E Insulating Glass Argon Non High Altitude Hardware Options: Cam-Action Lock, White, No Window Opening Control Device, No Limited Opening Hardware, Order Sash Lift, No Integrated Sensor
 Screen: Half Screen, Standard EnduraClad, Black, Standard, InView™
 Performance Information: U-Factor 0.29, SHGC 0.25, VLT 0.47, CPD PEL-N-234-01143-00001, Performance Class CW, PG 45, Calculated Positive DP Rating 45, Calculated Negative DP Rating 45, Year Rated 08/11, Clear Opening Width 24.125, Clear Opening Height 8.937, Clear Opening Area 1.497258, Egress Does not meet typical United States egress, but may comply with local code requirements
 Grille: LT, No Custom Grille, 7/8", Traditional (1W2H / 1W2H), Putty Glaze, Ogee
 Wrapping Information: No Exterior Trim, 4 3/16", 4 3/8", Factory Applied, Pella Recommended Clearance, Perimeter Length = 109".

Rough Opening: 28 - 1/4" X 27 - 1/2"

Line #	Location:	Attributes	Item Price	Qty	Ext'd Price
30	None Assigned				



PK # 2165

Viewed From Exterior

Pella® Reserve, Traditional Sash Set, Fixed, 94 X 42

1: 9442 Fixed Sash Set
 Frame Size: 94 X 42
 General Information: Standard, Wood, Pine, 4 3/8", 4 3/16"
 Exterior Color / Finish: Primed
 Interior Color / Finish: Primed Interior
 Sash / Panel: Putty Glaze, Ogee, Standard
 Glass: Insulated Dual Low-E Advanced Low-E Insulating Glass Argon Non High Altitude
 Performance Information: U-Factor 0.27, SHGC 0.29, VLT 0.55, CPD PEL-N-41-43064-00001
 Grille: No Grille.
 Wrapping Information: No Exterior Trim, 4 3/16", 4 3/8", Factory Applied, Pella Recommended Clearance, Perimeter Length = 272".

Rough Opening: 94 - 3/4" X 42 - 3/4"

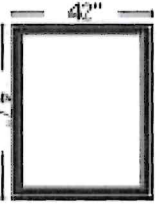
Line # Location:

35 None Assigned

Attributes

Pella® Reserve, Traditional Sash Set, Fixed, 47 X 42

Item Price	Qty	Ext'd Price
\$853.54	1	\$853.54



PK # 2165

Viewed From Exterior

1: 4742 Fixed Sash Set
 Frame Size: 47 X 42
 General Information: Standard, Wood, Pine, 4 3/8", 4 3/16"
 Exterior Color / Finish: Primed
 Interior Color / Finish: Primed Interior
 Sash / Panel: Putty Glaze, Ogee, Standard
 Glass: Insulated Dual Low-E Advanced Low-E Insulating Glass Argon Non High Altitude
 Performance Information: U-Factor 0.26, SHGC 0.29, VLT 0.55, CPD PEL-N-41-43000-00001, Performance Class LC, PG 50, Calculated Positive DP Rating 50, Calculated Negative DP Rating 50, Year Rated 11
 Grille: No Grille.
 Wrapping Information: No Exterior Trim, 4 3/16", 4 3/8", Factory Applied, Pella Recommended Clearance, Perimeter Length = 178".

Rough Opening: 47 - 3/4" X 42 - 3/4"

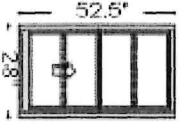
Line # Location:

40 None Assigned

Attributes

Pella® Reserve, Traditional Single Hung, 28 X 52.5

Item Price	Qty	Ext'd Price
\$1,128.02	1	\$1,128.02



PK # 2165

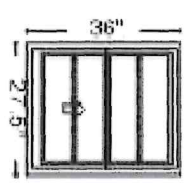
Viewed From Exterior

1: Non-Standard SizenNon-Standard Size Single Hung, Equal
 Frame Size: 28 X 52 1/2
 General Information: Standard, Luxury, Wood, Pine, 4 3/8", 4 3/16"
 Exterior Color / Finish: Primed, Primed Wood
 Interior Color / Finish: Primed Interior
 Sash / Panel: Putty Glaze, Ogee, Standard, No Sash Lugs
 Glass: Insulated Dual Low-E Advanced Low-E Insulating Glass Argon Non High Altitude
 Hardware Options: Cam-Action Lock, White, No Window Opening Control Device, No Limited Opening Hardware, Order Sash Lift, No Integrated Sensor
 Screen: Half Screen, Standard EnduraClad, Black, Standard, InView™
 Performance Information: U-Factor 0.29, SHGC 0.23, VLT 0.42, CPD PEL-N-234-01144-00001, Performance Class CW, PG 45, Calculated Positive DP Rating 45, Calculated Negative DP Rating 45, Year Rated 0811, Clear Opening Width 24.625, Clear Opening Height 21.812, Clear Opening Area 3.730004, Egress Does not meet typical United States egress, but may comply with local code requirements
 Grille: ILT, No Custom Grille, 1 1/4", Traditional (1W2H / 1W2H), Putty Glaze, Ogee
 Wrapping Information: No Exterior Trim, 4 3/16", 4 3/8", Factory Applied, Pella Recommended Clearance, Perimeter Length = 161".

Rough Opening: 28 - 3/4" X 53 - 1/4"

Line #	Location:	Attributes	Item Price	Qty	Ext'd Price
45	None Assigned		\$995.07	1	\$995.07

Pella® Reserve, Traditional Single Hung, 27.5 X 36



PK #
2165

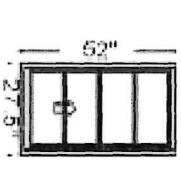
Viewed From Exterior

1: Non-Standard Size Single Hung, Equal
 Frame Size: 27 1/2 X 36
 General Information: Standard, Luxury, Wood, Pine, 4 3/8", 4 3/16"
 Exterior Color / Finish: Primed, Primed Wood
 Interior Color / Finish: Primed Interior
 Sash / Panel: Putty Glaze, Ogee, Standard, No Sash Lugs
 Glass: Insulated Dual Low-E Advanced Low-E Insulating Glass Argon Non High Altitude
 Hardware Options: Cam-Action Lock, White, No Window Opening Control Device, No Limited Opening Hardware, Order Sash Lift, No Integrated Sensor
 Screen: Half Screen, Standard EnduraClad, Black, Standard, InView™
 Performance Information: U-Factor 0.29, SHGC 0.25, VLT 0.47, CPD PEL-N-234-01143-00001, Performance Class CW, PG 45, Calculated Positive DP Rating 45, Calculated Negative DP Rating 45, Year Rated 0811, Clear Opening Width 24.125, Clear Opening Height 13.562, Clear Opening Area 2.272106, Egress Does not meet typical United States egress, but may comply with local code requirements
 Grille: LT, No Custom Grille, 7/8", Traditional (1W2H / 1W2H), Putty Glaze, Ogee
 Wrapping Information: No Exterior Trim, 4 3/16", 4 3/8", Factory Applied, Pella Recommended Clearance, Perimeter Length = 127".

Rough Opening: 28 - 1/4" X 36 - 3/4"

Line #	Location:	Attributes	Item Price	Qty	Ext'd Price
50	None Assigned		\$1,120.20	1	\$1,120.20

Pella® Reserve, Traditional Single Hung, 27.5 X 52



PK #
2165

Viewed From Exterior

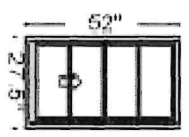
1: Non-Standard Size Single Hung, Equal
 Frame Size: 27 1/2 X 52
 General Information: Standard, Luxury, Wood, Pine, 4 3/8", 4 3/16"
 Exterior Color / Finish: Primed, Primed Wood
 Interior Color / Finish: Primed Interior
 Sash / Panel: Putty Glaze, Ogee, Standard, No Sash Lugs
 Glass: Insulated Dual Low-E Advanced Low-E Insulating Glass Argon Non High Altitude
 Hardware Options: Cam-Action Lock, White, No Window Opening Control Device, No Limited Opening Hardware, Order Sash Lift, No Integrated Sensor
 Screen: Half Screen, Standard EnduraClad, Black, Standard, InView™
 Performance Information: U-Factor 0.29, SHGC 0.25, VLT 0.47, CPD PEL-N-234-01143-00001, Performance Class CW, PG 45, Calculated Positive DP Rating 45, Calculated Negative DP Rating 45, Year Rated 0811, Clear Opening Width 24.125, Clear Opening Height 21.562, Clear Opening Area 3.612384, Egress Does not meet typical United States egress, but may comply with local code requirements
 Grille: LT, No Custom Grille, 7/8", Traditional (1W2H / 1W2H), Putty Glaze, Ogee
 Wrapping Information: No Exterior Trim, 4 3/16", 4 3/8", Factory Applied, Pella Recommended Clearance, Perimeter Length = 159".

Rough Opening: 28 - 1/4" X 52 - 3/4"

Line #	Location:	Attributes
55	None Assigned	

Pella® Reserve, Traditional Single Hung, 27.5 X 52

Item Price	Qty	Ext'd Price
\$1,120.20	1	\$1,120.20



PK # 2165

Viewed From Exterior

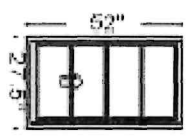
1: Non-Standard Size Single Hung, Equal
 Frame Size: 27 1/2 X 52
 General Information: Standard, Luxury, Wood, Pine, 4 3/8", 4 3/16"
 Exterior Color / Finish: Primed, Primed Wood
 Interior Color / Finish: Primed Interior
 Sash / Panel: Putty Glaze, Ogee, Standard, No Sash Lugs
 Glass: Insulated Dual Low-E Advanced Low-E Insulating Glass Argon Non High Altitude
 Hardware Options: Cam-Action Lock, White, No Window Opening Control Device, No Limited Opening Hardware, Order Sash Lift, No Integrated Sensor
 Screen: Half Screen, Standard EnduraClad, Black, Standard, InView™
 Performance Information: U-Factor 0.29, SHGC 0.25, VLT 0.47, CPD PEL-N-234-01 143-00001, Performance Class CW, PG 45, Calculated Positive DP Rating 45, Calculated Negative DP Rating 45, Year Rated 08/11, Clear Opening Width 24.125, Clear Opening Height 21.562, Clear Opening Area 3.612384, Egress Does not meet typical United States egress, but may comply with local code requirements
 Grille: ILT, No Custom Grille, 7/8", Traditional (1W2H / 1W2H), Putty Glaze, Ogee
 Wrapping Information: No Exterior Trim, 4 3/16", 4 3/8", Factory Applied, Pella Recommended Clearance, Perimeter Length = 159".

Rough Opening: 28 - 1/4" X 52 - 3/4"

Line #	Location:	Attributes
60	None Assigned	

Pella® Reserve, Traditional Single Hung, 27.5 X 52

Item Price	Qty	Ext'd Price
\$1,120.20	1	\$1,120.20



PK # 2165

Viewed From Exterior

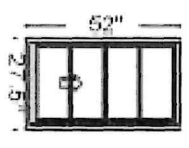
1: Non-Standard Size Single Hung, Equal
 Frame Size: 27 1/2 X 52
 General Information: Standard, Luxury, Wood, Pine, 4 3/8", 4 3/16"
 Exterior Color / Finish: Primed, Primed Wood
 Interior Color / Finish: Primed Interior
 Sash / Panel: Putty Glaze, Ogee, Standard, No Sash Lugs
 Glass: Insulated Dual Low-E Advanced Low-E Insulating Glass Argon Non High Altitude
 Hardware Options: Cam-Action Lock, White, No Window Opening Control Device, No Limited Opening Hardware, Order Sash Lift, No Integrated Sensor
 Screen: Half Screen, Standard EnduraClad, Black, Standard, InView™
 Performance Information: U-Factor 0.29, SHGC 0.25, VLT 0.47, CPD PEL-N-234-01 143-00001, Performance Class CW, PG 45, Calculated Positive DP Rating 45, Calculated Negative DP Rating 45, Year Rated 08/11, Clear Opening Width 24.125, Clear Opening Height 21.562, Clear Opening Area 3.612384, Egress Does not meet typical United States egress, but may comply with local code requirements
 Grille: ILT, No Custom Grille, 7/8", Traditional (1W2H / 1W2H), Putty Glaze, Ogee
 Wrapping Information: No Exterior Trim, 4 3/16", 4 3/8", Factory Applied, Pella Recommended Clearance, Perimeter Length = 159".

Rough Opening: 28 - 1/4" X 52 - 3/4"

Line #	Location:	Attributes	Item Price	Qty	Ext'd Price
65	None Assigned				

Pella® Reserve, Traditional Single Hung, 27.5 X 52

\$1,120.20	2	\$2,240.40
------------	---	------------



PK # 2165

Viewed From Exterior

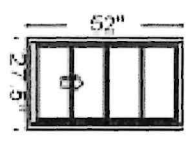
1: Non-Standard Size Single Hung, Equal
 Frame Size: 27 1/2 X 52
 General Information: Standard, Luxury, Wood, Pine, 4 3/8", 4 3/16"
 Exterior Color / Finish: Primed, Primed Wood
 Interior Color / Finish: Primed Interior
 Sash / Panel: Putty Glaze, Ogee, Standard, No Sash Lugs
 Glass: Insulated Dual Low-E Advanced Low-E Insulating Glass Argon Non High Altitude
 Hardware Options: Cam-Action Lock, White, No Window Opening Control Device, No Limited Opening Hardware, Order Sash Lift, No Integrated Sensor
 Screen: Half Screen, Standard EnduraClad, Black, Standard, InView™
 Performance Information: U-Factor 0.29, SHGC 0.25, VLT 0.47, CPD PEL-N-234-01143-00001, Performance Class CW, PG 45, Calculated Positive DP Rating 45, Calculated Negative DP Rating 45, Year Rated 08/11, Clear Opening Width 24.125, Clear Opening Height 21.562, Clear Opening Area 3.612384, Egress Does not meet typical United States egress, but may comply with local code requirements
 Grille: ILT, No Custom Grille, 7/8", Traditional (1WZH / 1WZH), Putty Glaze, Ogee
 Wrapping Information: No Exterior Trim, 4 3/16", 4 3/8", Factory Applied, Pella Recommended Clearance, Perimeter Length = 159".

Rough Opening: 28 - 1/4" X 52 - 3/4"

Line #	Location:	Attributes	Item Price	Qty	Ext'd Price
70	None Assigned				

Pella® Reserve, Traditional Single Hung, 27.5 X 52

\$1,120.20	2	\$2,240.40
------------	---	------------



PK # 2165

Viewed From Exterior

1: Non-Standard Size Single Hung, Equal
 Frame Size: 27 1/2 X 52
 General Information: Standard, Luxury, Wood, Pine, 4 3/8", 4 3/16"
 Exterior Color / Finish: Primed, Primed Wood
 Interior Color / Finish: Primed Interior
 Sash / Panel: Putty Glaze, Ogee, Standard, No Sash Lugs
 Glass: Insulated Dual Low-E Advanced Low-E Insulating Glass Argon Non High Altitude
 Hardware Options: Cam-Action Lock, White, No Window Opening Control Device, No Limited Opening Hardware, Order Sash Lift, No Integrated Sensor
 Screen: Half Screen, Standard EnduraClad, Black, Standard, InView™
 Performance Information: U-Factor 0.29, SHGC 0.25, VLT 0.47, CPD PEL-N-234-01143-00001, Performance Class CW, PG 45, Calculated Positive DP Rating 45, Calculated Negative DP Rating 45, Year Rated 08/11, Clear Opening Width 24.125, Clear Opening Height 21.562, Clear Opening Area 3.612384, Egress Does not meet typical United States egress, but may comply with local code requirements
 Grille: ILT, No Custom Grille, 7/8", Traditional (1WZH / 1WZH), Putty Glaze, Ogee
 Wrapping Information: No Exterior Trim, 4 3/16", 4 3/8", Factory Applied, Pella Recommended Clearance, Perimeter Length = 159".

Rough Opening: 28 - 1/4" X 52 - 3/4"

Thank You For Purchasing Pella® Products

PELLA WARRANTY:

Pella products are covered by Pella's limited warranties in effect at the time of sale. All applicable product warranties are incorporated into and become a part of this contract. Please see the warranties for complete details, taking special note of the two important notice sections regarding installation of Pella products and proper management of moisture within the wall system. Neither Pella Corporation nor the Seller will be bound by any other warranty unless specifically set out in this contract. However, Pella Corporation will not be liable for branch warranties which create obligations in addition to or obligations which are inconsistent with Pella written warranties.

Clear opening (egress) information does not take into consideration the addition of a Rolscreen [or any other accessory] to the product. You should consult your local building code to ensure your Pella products meet local egress requirements.

Per the manufacturer's limited warranty, unfinished mahogany exterior windows and doors must be finished upon receipt prior to installing and refinished annually, thereafter. Variations in wood grain, color, texture or natural characteristics are not covered under the limited warranty.

INSYNCTIVE PRODUCTS: In addition, Pella Insynctive Products are covered by the Pella Insynctive Products Software License Agreement and Pella Insynctive Products Privacy Policy in effect at the time of sale, which can be found at [Insynctive.pella.com](https://www.insynctive.pella.com). By installing or using Your Insynctive Products you are acknowledging the Insynctive Software Agreement and Privacy Policy are part of the terms of sale.

Notice of Collection of Personal Information: We may collect your personal information when you interact with us. Under the California Consumer Privacy Act (CCPA), California residents have specific rights to request this information, request to delete this information, and opt out of the sharing or sale of this information to third parties. To learn more about our collection practices and your rights under the CCPA please visit our link <https://www.pella.com/california-rights-policy/> at [pella.com](https://www.pella.com).

ARBITRATION AND CLASS ACTION WAIVER ("ARBITRATION AGREEMENT")

YOU and Pella and its subsidiaries and the Pella Branded Distributor AGREE TO ARBITRATE DISPUTES ARISING OUT OF OR RELATING TO YOUR PELLA PRODUCTS (INCLUDES PELLA GOODS AND PELLA SERVICES) AND WAIVE THE RIGHT TO HAVE A COURT OR JURY DECIDE DISPUTES. YOU WAIVE ALL RIGHTS TO PROCEED AS A MEMBER OR REPRESENTATIVE OF A CLASS ACTION, INCLUDING CLASS ARBITRATION, REGARDING DISPUTES ARISING OUT OF OR RELATING TO YOUR PELLA PRODUCTS. You may opt out of this Arbitration Agreement by providing notice to Pella no later than ninety (90) calendar days from the date You purchased or otherwise took ownership of Your Pella Goods. To opt out, You must send notice by e-mail to pellawebsupport@pella.com, with the subject line: "Arbitration Opt Out" or by calling (877) 473-5527. Opting out of the Arbitration Agreement will not affect the coverage provided by any applicable limited warranty pertaining to Your Pella Products. For complete information, including the full terms and conditions of this Arbitration Agreement, which are incorporated herein by reference, please visit www.pella.com/arbitration or e-mail to pellawebsupport@pella.com, with the subject line: "Arbitration Details" or call (877) 473-5527. **D'ARBITRAGE ET RENONCIATION AU RECOURS COLLECTIF ("convention d'arbitrage") EN FRANÇAIS SEE PELLA.COM/ARBITRATION. DE ARBITRAJE Y RENUNCIA COLECTIVA ("acuerdo de arbitraje") EN ESPAÑOL VER PELLA.COM/ARBITRATION.**

Seller shall not be held liable for failure or delay in the performance of its obligations under this Agreement, if such performance is hindered or delayed by the occurrence of an act or event beyond the Seller's reasonable control (force majeure event), including but not limited to earthquakes, unusually severe weather and other Acts of God, fire, strikes and labor unrest, epidemics, riots, war, civil unrest, and government interventions. Seller shall give timely notice of a force majeure event and take such reasonable action to mitigate the impacts of such an event.

Product Performance Information:

U-Factor, Solar Heat Gain Coefficient (SHGC), and Visible Light Transmittance (VLT) are certified by the National Fenestration Rating Council (NFRC).

For more information regarding the finishing, maintenance, service and warranty of all Pella® products, visit the Pella® website at www.pella.com

Manufacturer stipulates that these ratings conform to applicable NFRC procedures for determining whole product performance. NFRC ratings are determined for a fixed set of environmental conditions and a specific product size. NFRC does not recommend any products and does not warrant the suitability of any product for any specific use.

Design Pressure (DP), Performance Class, and Performance Grade (PG) are certified by a third party organization, in many cases the Window and Door Manufacturers Association (WDMA). The certification requires the performance of at least one product of the product line to be tested in accordance with the applicable performance standards and verified by an independent party. The certification indicates that the product(s) of the product line passed the applicable tests. The certification does not apply to mulled and/or product combinations unless noted. Actual product results will vary and change over the products life.

For more performance information along with information on Florida Product Approval System (FPAS) Number and Texas Dept. of Insurance (TDI) number go to www.pella.com/performance.

Including during the construction period, casement windows should never be left open and unlocked for prolong periods or during high wind conditions to avoid sash detachment/damage.

Actual sizes tested for documented STC and OITC ratings may vary from the ASTM E 1425 sizes to better represent Pella product offering.

STC and OITC ratings shown may be conservatively based on products tested with thinner panes of glass.

STC and OITC ratings may be from test results from an equivalent product.

Customer: All Bidders - SD Commercial Projects Project Name: Lucky Radio Station

Order Number: 233

Quote Number: 18139493

TO ORDER: Read all the Terms & Conditions. Date, sign, and return. Orders are not entered without signature.

Terms of Sale:

1. By signing this contract, buyer agrees to purchase the products and services described in accordance with these terms and conditions. This contract is between the company (Huey Long Co Inc, dba Heartland Pella, dba Pella Windows and Doors) and the signer. Unless specifically stated elsewhere there is no agreement between the company and the signer to wait for payment until the signer gets paid. Your signature means that you have checked the order and agree to accept and pay for the items shown. Buyer may not assign this contract to anyone else without written approval of the company.
2. This is the entire agreement between the buyer and the company. Any changes must be agreed to and signed by both the buyer and the company.
3. Contractor Accounts are shipped COD unless Net 30 account is approved. Net 30 Invoices are due within 30 days of receipt of product. There is a finance charge of 1-1/2% per month on invoices unpaid for more than 30 days. If an invoice is unpaid after 60 days we will send the owner a letter explaining their liability for liens filed against their property and further shipments to you will be COD. After 90 days we will file a lien, turn the account over for collection or both.
4. Unless we have a tax form on file, you must pay all applicable sales tax.
5. Delivery dates are estimates only. We provide tailgate delivery, you must provide help, if an extra person is needed or we are unable to unload a \$100 fee will be added to your order. If an order is held 3 weeks past original need date, we will send and invoice.
6. Warranties for all products covered by this contract are posted at all store locations. A copy will be mailed to you upon request.
7. Once this contract is accepted by the company, it cannot be changed or cancelled. If you want to return anything, you must have prior written authorization and pay a handling charge.
8. The buyer agrees to hold the company harmless against all claims, demands, costs and expenses arising from: (a) Buyer's breach of contract; or (b) Buyer's negligence; or (c) Buyer's or any third parties misuse or misapplication of the products supplied by the company.
9. The company shall have no liability for any claims, loss or damage that is incidental or any loss of profit or savings.
10. Any standard order that is cancelled prior to shipping will be billed at 50% of the original selling price. Non-standard orders cannot be returned.
11. This quote is subject to change every Friday. We are not responsible for measuring errors made by others.
12. **If Heartland Pella does not complete an install job, a 10% retainage is allowed. Billing will start the day of installation and payment is expected before the installer leaves the last day of the initial install date.**

Project Check List:

____ Brand
____ Exterior Clad Color
____ Glazing * Distortion in tempered glass is common and not considered a defect.
____ Blind Color
____ Muntin
____ Wall Thickness
____ Hardware/screen Color
____ Door Hardware
____ Door Screen
____ Hinge/Slide Discussed (hinge/slide from outside view)
____ Pre finish
____ Desired delivery date or estimated install date

Customer: All Bidders - SD Commercial Projects

Project Name: Lucky Radio Station

Order Number: 233

Quote Number: 18139493

Project Checklist has been reviewed

Customer Name _____ (Please print)

Pella Sales Rep Name _____ (Please print)

Customer Signature _____

Pella Sales Rep Signature _____

Date _____

Date _____

Credit Card Approval Signature _____

Order Totals

Taxable Subtotal	\$18,358.53
Sales Tax @ 6.2%	\$1,138.23
Non-taxable Subtotal	\$0.00
Total	\$19,496.76
Deposit Received	\$0.00
Amount Due	\$19,496.76

Case No. 240040
Address: 745 Main Street

Staff Report

The applicant has submitted an application for Certificate of Appropriateness for work at 745 Main St., a contributing structure located in the City of Deadwood.

Applicant: Emily Costopoulos
Owner: Emily Costopoulos LLC
Constructed: 1939

CRITERIA FOR THE ISSUANCE OF A CERTIFICATE OF APPROPRIATENESS

The Historic District Commission shall use the following criteria in granting or denying the Certificate of Appropriateness:

General Factors:

1. Historic significance of the resource: This structure is essentially a nondescript commercial building. It does not reflect in either style or use of materials which is common to surrounding commercial buildings.

2. Architectural design of the resource and proposed alterations: The applicant is requesting permission to restore the exterior which will include repairing stucco, windows, doors and foundation.

Attachments: Yes

Plans: No

Photos: Yes

Staff Opinion: The applicant has applied for the Façade Easement Program. Staff is recommending only replacing the window sashes in order to preserve the original stucco. This was discussed in detail with the owners during a recent staff visit. The front canopy will also remain rather than being replaced with a fabric awning.

The proposed work and changes does not encroach upon, damage or destroy a historic resource nor does it have an adverse effect on the character of the building or the historic character of the local historic district, the State and National Register Historic Districts or the Deadwood National Historic Landmark District.



Motions available for commission action:

A: Based upon the guidance found in DCO 17.68.050, I find that the exterior alteration proposed is congruous with the historical, architectural, archaeological or cultural aspects of the district and MOVE to grant Certification of Appropriateness.

OR

B: Based upon the guidance found in DCO 17.68.050, I find that the exterior alteration proposed is incongruous with the historical, architectural, archaeological or cultural aspects of the district and MOVE to deny Certification of Appropriateness.