

S:\Projects\21-112 Adams Block Pedestrian Plaza\Drawings\0 Landscape\Sheet Files\112-LANDSCAPPLAN.dwg ct 5/17/2021 3:15:08 PM



EXISTING PLAZA

EXISTING PLANTER

EXISTING SCULPTURE

EXISTING WALL W/ NEW PIPE AND KNUCKLE RAIL

SIDEWALK

CHEEK WALL W/ PIPE AND KNUCKLE RAIL

WASTE RECEPTACLE

PIPE AND KNUCKLE GUARDRAIL

PAVER PATIO

TABLE WITH CHAIRS

SUPPORT WALL FOR DECK

TRENCH DRAIN

RETAINING WALL

TRENCH DRAIN

STAIRS TO DECK

DROP-OFF AREA

DECK FLUSH W/ PAVER PATIO

STORM INLET

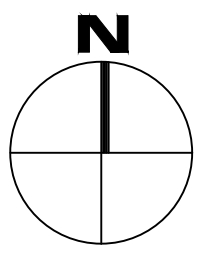


TerraSite
Design

Civil Engineering | Landscape Architecture | Planning

1635 Deadwood Ave
Rapid City, SD 57702
(605) 791-1736

PRELIMINARY
NOT FOR CONSTRUCTION



0 5 10'
HORIZ. SCALE: 1"=5'

ADAMS BLOCK
PEDESTRIAN
PLAZA

DEADWOOD, SD

REVISIONS:

Project Number: 21-112

Date: 5/17/2021

LANDSCAPE PLAN RENDER
L-101