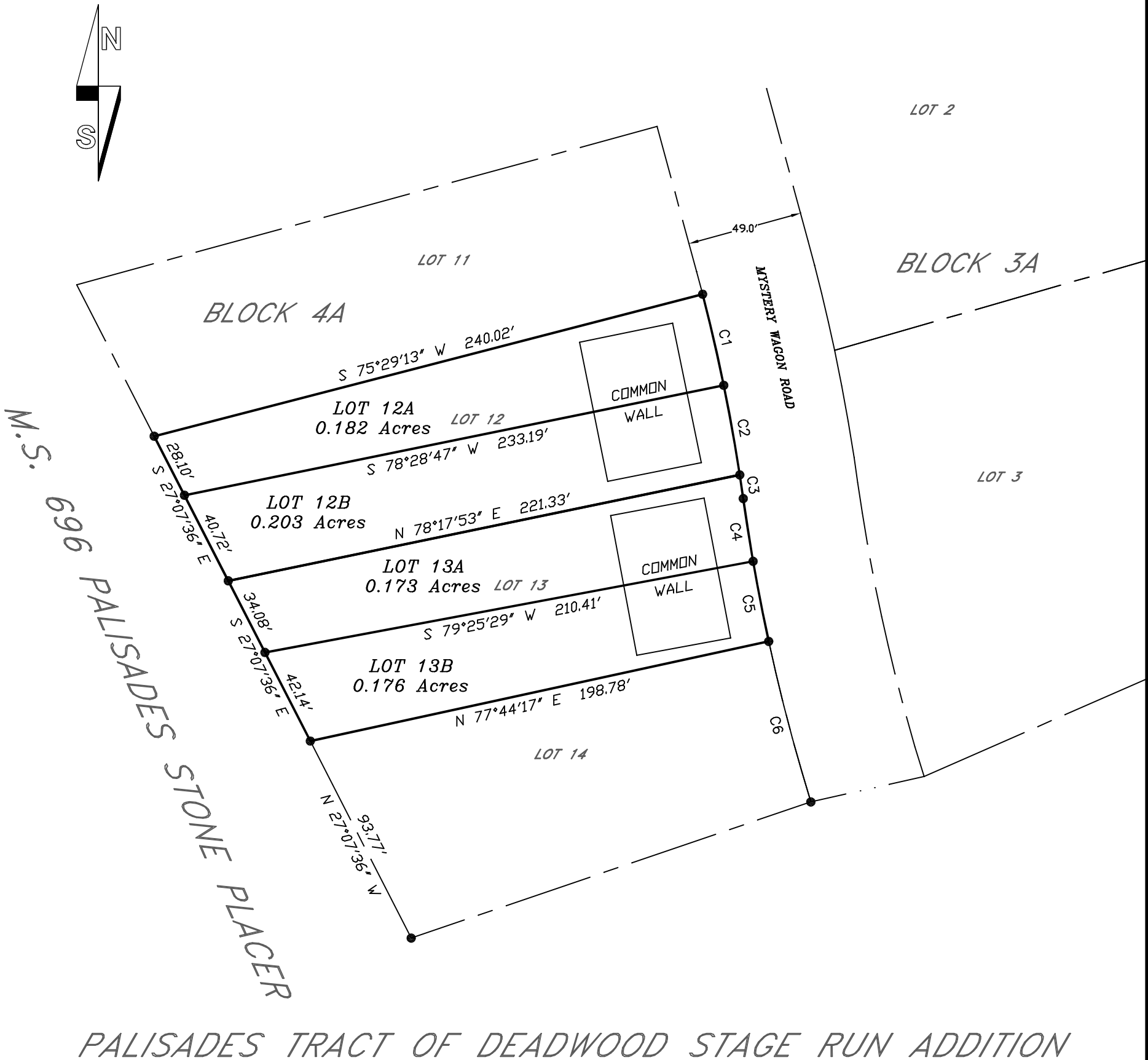


PLAT OF LOTS 12A, 12B, 13A AND 13B, BLOCK 4A OF PALISADES TRACT OF DEADWOOD STAGE RUN ADDITION TO THE CITY OF DEADWOOD LOCATED IN THE SW¼ OF SECTION 14, THE SE¼ OF SECTION 15, THE NE¼NE¼ OF SECTION 22 AND THE N½NW¼ OF SECTION 23, T5N, R3E, B.H.M., CITY OF DEADWOOD, LAWRENCE COUNTY, SOUTH DAKOTA FORMERLY A PORTION OF LOTS 12 AND 13, BLOCK 4A



CURVE	RADIUS	ARC LENGTH	CHORD LENGTH	CHORD BEARING	DELTA ANGLE
C1	776.01'	39.61'	39.61'	N 13°02'52" W	2°55'29"
C2	776.01'	38.54'	38.53'	S 10°09'46" E	2°50'43"
C3	775.50'	10.13'	10.13'	S 08°21'54" E	0°44'54"
C4	815.74'	26.91'	26.91'	S 08°55'49" E	1°53'25"
C5	819.43'	34.55'	34.55'	S 11°03'28" E	2°24'56"
C6	824.50'	70.32'	70.30'	N 14°42'18" W	4°53'11"

● REBAR & CAP (VREM LS6577)



- NOTES:
- OWNER/DEVELOPER
WJP HOLDINGS LLC
PO BOX 631
DEADWOOD, SD 57732
 - A 5' DRAINAGE & UTILITY EASEMENT IS HEREBY GRANTED
ALONG SIDE AND REAR LOT LINES AND 10' ALONG THE FRONT
UNLESS OTHERWISE NOTED



Prepared By:
PONDEROSA LAND SURVEYS, L.L.C.
332A WEST MAIN ST.
LEAD, SOUTH DAKOTA 57754
(605) 722-3840

Date:	4/12/2022
Drawn By:	L. D. Vrem
Project No.:	22-163
Dwg. No.:	22-163.dwg