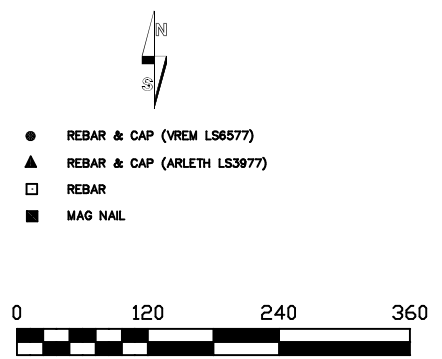


PLAT OF LOTS 13, 14 15, BLOCK 3A AND DEDICATED PUBLIC RIGHT OF WAY OF PALISADES TRACT OF DEADWOOD STAGE RUN ADDITION TO THE CITY OF DEADWOOD FORMERLY LOT 25B, BLOCK 2 AND A PORTION OF PALISADES TRACT OF DEADWOOD STAGE RUN ADDITION ALL LOCATED IN THE SW¼ OF SECTION 14, THE SE¼ OF SECTION 15, THE NE¼NE¼ OF SECTION 22 AND THE N¼NW¼ OF SECTION 23, T5N, R3E, B.H.M., CITY OF DEADWOOD, LAWRENCE COUNTY, SOUTH DAKOTA

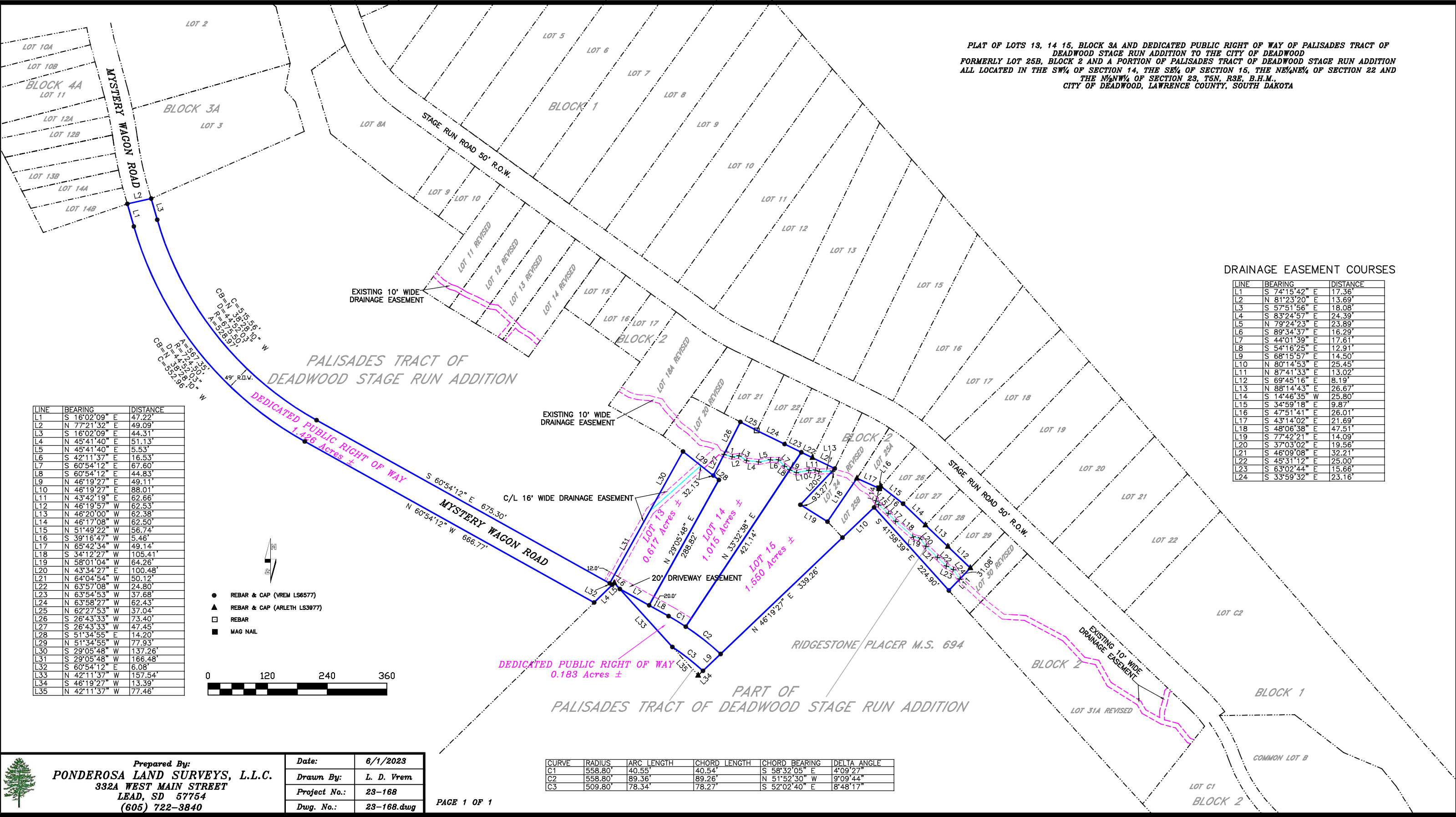
DRAINAGE EASEMENT COURSES

LINE	BEARING	DISTANCE
L1	S 74°15'42" E	17.36'
L2	N 81°23'20" E	13.69'
L3	S 57°51'56" E	18.08'
L4	S 83°24'57" E	24.39'
L5	N 79°24'23" E	23.89'
L6	S 89°34'37" E	16.29'
L7	S 44°01'39" E	17.61'
L8	S 54°16'25" E	12.91'
L9	S 68°15'57" E	14.50'
L10	N 80°14'53" E	25.45'
L11	N 87°41'33" E	13.02'
L12	S 69°45'16" E	8.19'
L13	N 88°14'43" E	26.67'
L14	S 14°46'35" W	25.80'
L15	S 34°59'18" E	9.87'
L16	S 47°51'41" E	26.01'
L17	S 43°14'02" E	21.69'
L18	S 48°06'38" E	47.51'
L19	S 77°42'21" E	14.09'
L20	S 37°03'02" E	19.56'
L21	S 46°09'08" E	32.21'
L22	S 45°31'12" E	25.00'
L23	S 63°02'44" E	15.66'
L24	S 33°59'32" E	23.16'

LINE	BEARING	DISTANCE
L1	S 16°02'09" E	47.22'
L2	N 77°21'32" E	49.09'
L3	S 16°02'09" E	44.31'
L4	N 45°41'40" E	51.13'
L5	N 45°41'40" E	5.53'
L6	S 42°11'37" E	16.53'
L7	S 60°54'12" E	67.60'
L8	S 60°54'12" E	44.83'
L9	N 46°19'27" E	49.11'
L10	N 46°19'27" E	88.01'
L11	N 43°42'19" E	62.66'
L12	N 46°19'57" W	62.53'
L13	N 46°20'00" W	62.38'
L14	N 46°17'08" W	62.50'
L15	N 51°49'22" W	56.74'
L16	S 39°16'47" W	5.46'
L17	N 65°42'34" W	49.14'
L18	S 34°12'27" W	105.41'
L19	N 58°01'04" W	64.26'
L20	N 43°34'27" E	100.48'
L21	N 64°04'54" W	50.12'
L22	N 63°57'08" W	24.80'
L23	N 63°54'53" W	37.68'
L24	N 63°58'27" W	62.43'
L25	N 62°27'53" W	37.04'
L26	S 26°43'33" W	73.40'
L27	S 26°43'33" W	47.45'
L28	S 51°34'55" E	14.20'
L29	N 51°34'55" W	77.93'
L30	S 29°05'48" W	137.26'
L31	S 29°05'48" W	166.48'
L32	S 60°54'12" E	6.08'
L33	N 42°11'37" W	157.54'
L34	S 46°19'27" W	13.39'
L35	N 42°11'37" W	77.46'



- REBAR & CAP (VREM LS6577)
- ▲ REBAR & CAP (ARLETH LS3977)
- REBAR
- MAG NAIL



CURVE	RADIUS	ARC LENGTH	CHORD LENGTH	CHORD BEARING	DELTA ANGLE
C1	558.80'	40.55'	40.54'	S 58°32'05" E	4°09'27"
C2	558.80'	89.36'	89.26'	N 51°52'30" W	9°09'44"
C3	509.80'	78.34'	78.27'	S 52°02'40" E	8°48'17"

Prepared By: PONDEROSA LAND SURVEYS, L.L.C.
 332A WEST MAIN STREET
 LEAD, SD 57754
 (605) 722-3840

Date:	6/1/2023
Drawn By:	L. D. Vrem
Project No.:	23-168
Dwg. No.:	23-168.dwg