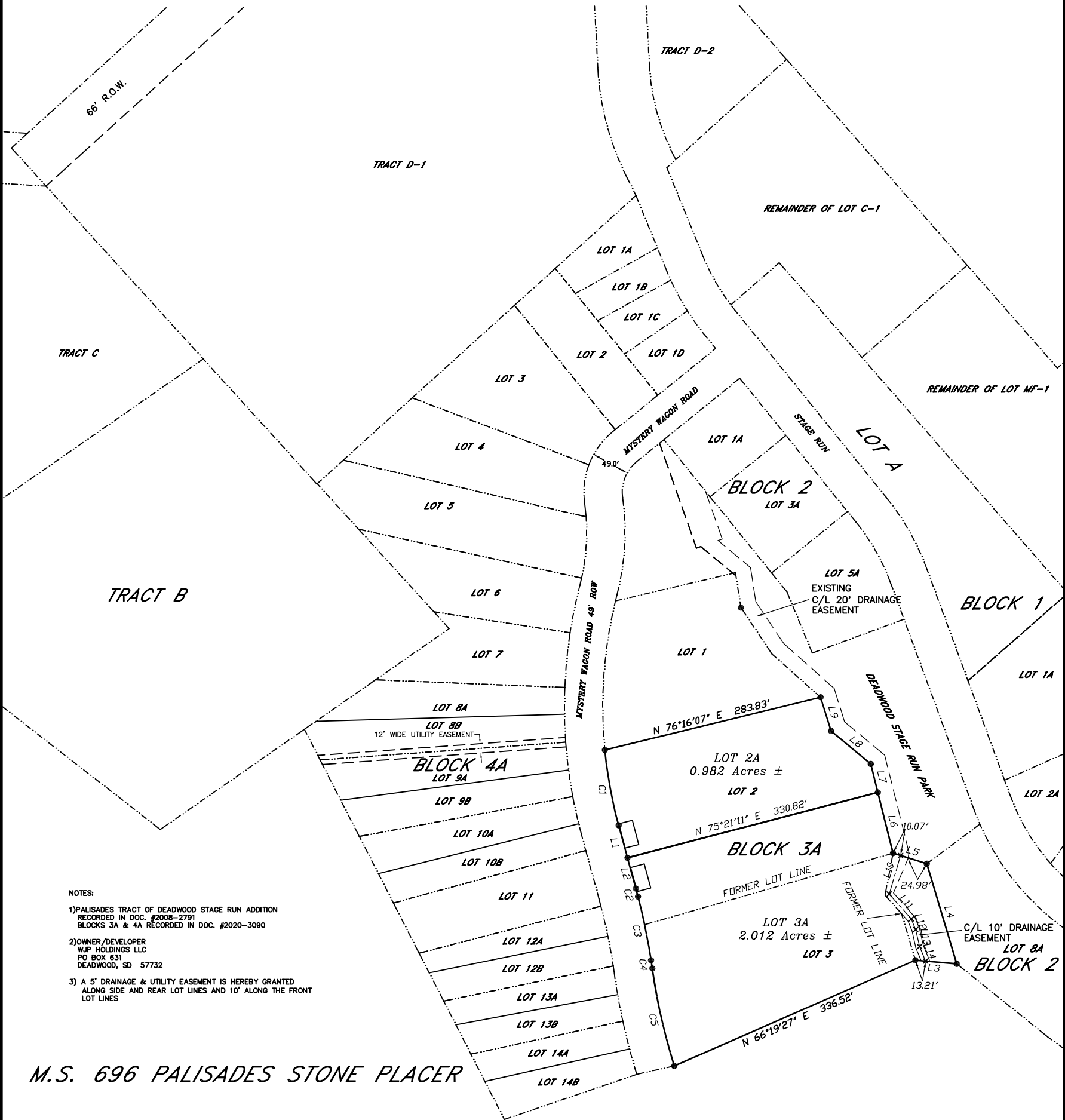


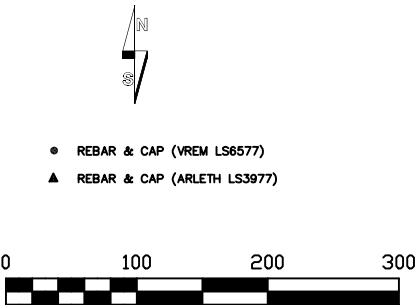
PLAT OF LOT 2A AND LOT 3A, BLOCK 3A OF PALISADES TRACT OF DEADWOOD  
STAGE RUN ADDITION TO THE CITY OF DEADWOOD  
FORMERLY LOTS 2 AND 3, BLOCK 3A AND A PORTION OF PALISADES TRACT OF  
DEADWOOD STAGE RUN ADDITION  
LOCATED IN THE SW¼ OF SECTION 14, THE SE¼ OF SECTION 15, THE NE¼NE¼  
OF SECTION 22 AND THE N½NW¼ OF SECTION 23, T5N, R3E, B.H.M.,  
CITY OF DEADWOOD, LAWRENCE COUNTY, SOUTH DAKOTA



- NOTES:
- 1)PALISADES TRACT OF DEADWOOD STAGE RUN ADDITION  
RECORDED IN DOC. #2008-2791  
BLOCKS 3A & 4A RECORDED IN DOC. #2020-3090
  - 2)OWNER/DEVELOPER  
W.P. HOLDINGS LLC  
PO BOX 631  
DEADWOOD, SD 57732
  - 3) A 5' DRAINAGE & UTILITY EASEMENT IS HEREBY GRANTED  
ALONG SIDE AND REAR LOT LINES AND 10' ALONG THE FRONT  
LOT LINES

M.S. 696 PALISADES STONE PLACER

PALISADES TRACT OF DEADWOOD STAGE RUN ADDITION



LINE	BEARING	DISTANCE
L1	S 15°14'51" E	43.04'
L2	S 15°14'51" E	40.69'
L3	S 84°56'44" E	53.12'
L4	N 16°40'13" W	133.64'
L5	N 72°32'21" W	45.20'
L6	N 14°01'51" W	79.99'
L7	N 14°01'51" W	37.46'
L8	N 50°14'08" W	66.07'
L9	N 17°20'55" W	45.02'
L10	S 16°18'54" W	51.44'
L11	S 41°39'43" E	42.37'
L12	S 22°12'52" E	14.88'
L13	S 12°56'00" E	22.23'
L14	S 22°43'35" E	20.16'

CURVE	RADIUS	ARC LENGTH	CHORD LENGTH	CHORD BEARING	DELTA ANGLE
C1	575.50'	98.04'	97.92'	S 10°21'57" E	9°45'39"
C2	824.44'	10.55'	10.55'	S 14°52'40" E	0°44'00"
C3	825.01'	83.09'	83.05'	S 11°37'30" E	5°46'13"
C4	775.31'	127.81'	127.67'	N 12°42'46" W	9°26'43"
C5	824.50'	10.77'	10.77'	S 08°21'54" E	0°44'54"
				S 12°42'46" E	9°26'43"



Prepared By:  
**PONDEROSA LAND SURVEYS, L.L.C.**  
332A WEST MAIN STREET  
LEAD, SD 57754  
(605) 722-3840

Date:	9/15/2023
Drawn By:	L. D. Vrem
Project No.:	23-343
Dwg. No.:	23-343.dwg