

HISTORIC BLACK HILLS STUDIOS

HOME OF THE FASSBENDER PHOTOGRAPHIC COLLECTION

New to the Board

Welcome to Gary Linn as a new board member for the Fassbender Photographic Collection. Linn is currently in his 35th year as the K-12 Librarian for the Lead-Deadwood School District. He is actively involved with our student body being the student council advisor for 32 years and prom advisor 6 years. He has also been South Dakota State Executive Director of Student Councils for 10 years and on the Hearst Library board for 30 years.



Gary Linn

Photography Quote:

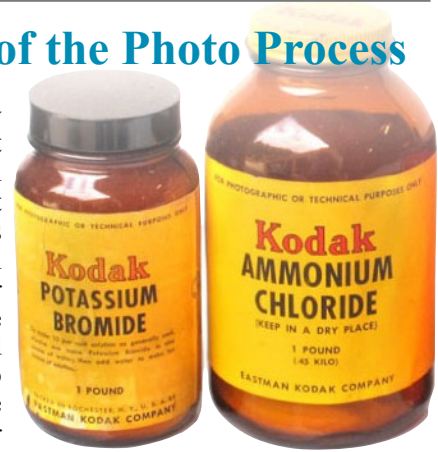
"I began to realize that the camera sees the world differently than the human eye and that sometimes those differences can make a photograph more powerful than what you actually observed."

—Galen Rowell



Chemicals Part of the Photo Process

Chemicals were a necessary part of the process when it came to the end product in photography. The light sensitive component in film is silver and it was embedded in an emulsion on the glass or celluloid substrate. A recipe with numerous chemicals and instructions were used to convert the films to an image we can see. Developer changed the silver to a silver halide and, after rinsing and halting the actions of the developer, other chemicals were used to clear away the undeveloped portions and leave a negative image that we can see. (more on pg. 2)

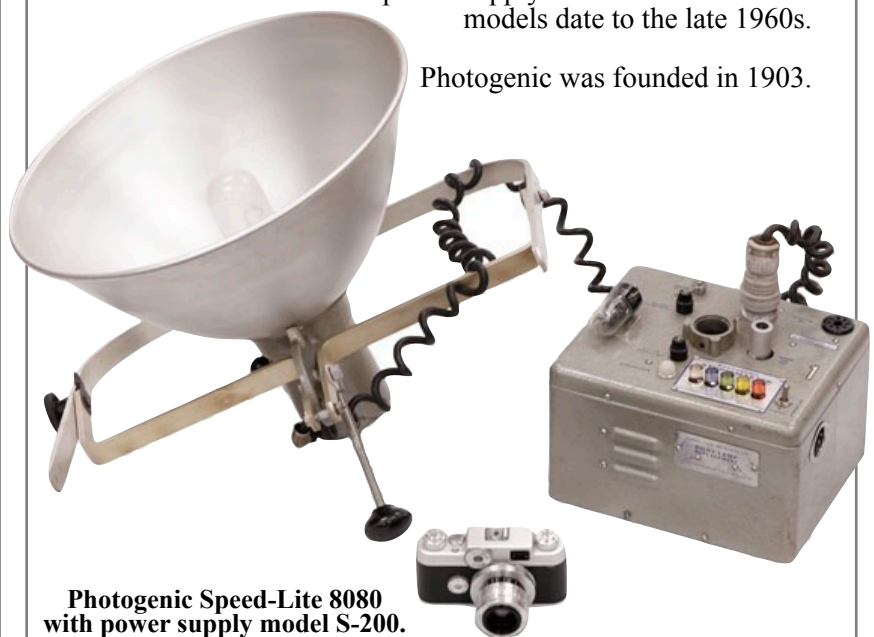


Above: Potassium bromide was typically used as a 'modifier' in developer (to change contrast or limit fogging of the film). Ammonium chloride was sometimes used in developing, toning and bleaching processes.

Featured Artifact

Photogenic has been a long time manufacturer of photographic lighting and still provides many studio products to this day. This Photogenic Speed-Lite is accompanied by a companion power supply. This and other similar models date to the late 1960s.

Photogenic was founded in 1903.



Photogenic Speed-Lite 8080 with power supply model S-200. (35mm film camera for scale)

Recently Digitized...



Undated image Spearfish Bus Co.



Undated image of Pine Crest Tourist Park in Spearfish.



1928 Days of 76 Parade float



Undated Spearfish High School Girls Glee Club

Photography Community

- **Black Hills Focus Group**
(historicblackhillstudios.org/BHFG)
- **Black Hills Photography Club**
(blackhillphotographyclub.com)
- **Black Hills Photo Shootout** and related photography events
(blackhillphotoshootout.com)

Chemistry (cont. from pg. 1)

Some chemicals were hazardous to handle, while others were relatively harmless. Digital photography has mostly displaced the chemical-based process. However, some hobbyists are returning to the film and chemical methods in recent years.

Locally, students enrolled in the photography program at Black Hills State University are required to do a semester with traditional, chemical based black & white film in the darkroom before enrolling in digital photography classes. Spearfish High School is among very few high schools that still have a traditional darkroom.

Watch for an opportunity to participate in a “Day in the Darkroom” at Spearfish High School in February by visiting blackhillshistory.org and clicking on “EDUCATION”.



Above: A variety of chemicals used in the photographic process.

Stewardship Agreement with DHI

The board of directors for the Fassbender Photographic Collection (FPC) are pleased to announce a stewardship agreement with Deadwood History, Inc. (DHI)

The collection has been co-owned by the Cities of Lead, Deadwood and Spearfish since 2010. Since then, the cities have provided funding for storage and conservation efforts. Lawrence County has also provided funding in recent years.

During that time, the FPC board of directors has contracted with DHI for the storage of the collection which includes an employee dedicated to the conservation efforts.

The new stewardship agreement takes the prior contract a bit further by streamlining financials, sharing of staff resources and increased exhibit opportunities at DHI properties and elsewhere.

Shared staff resources include expertise in museum and archives industry best practices, financial record-keeping, public outreach, marketing and education.

The stewardship agreement will commence January 1, 2022.