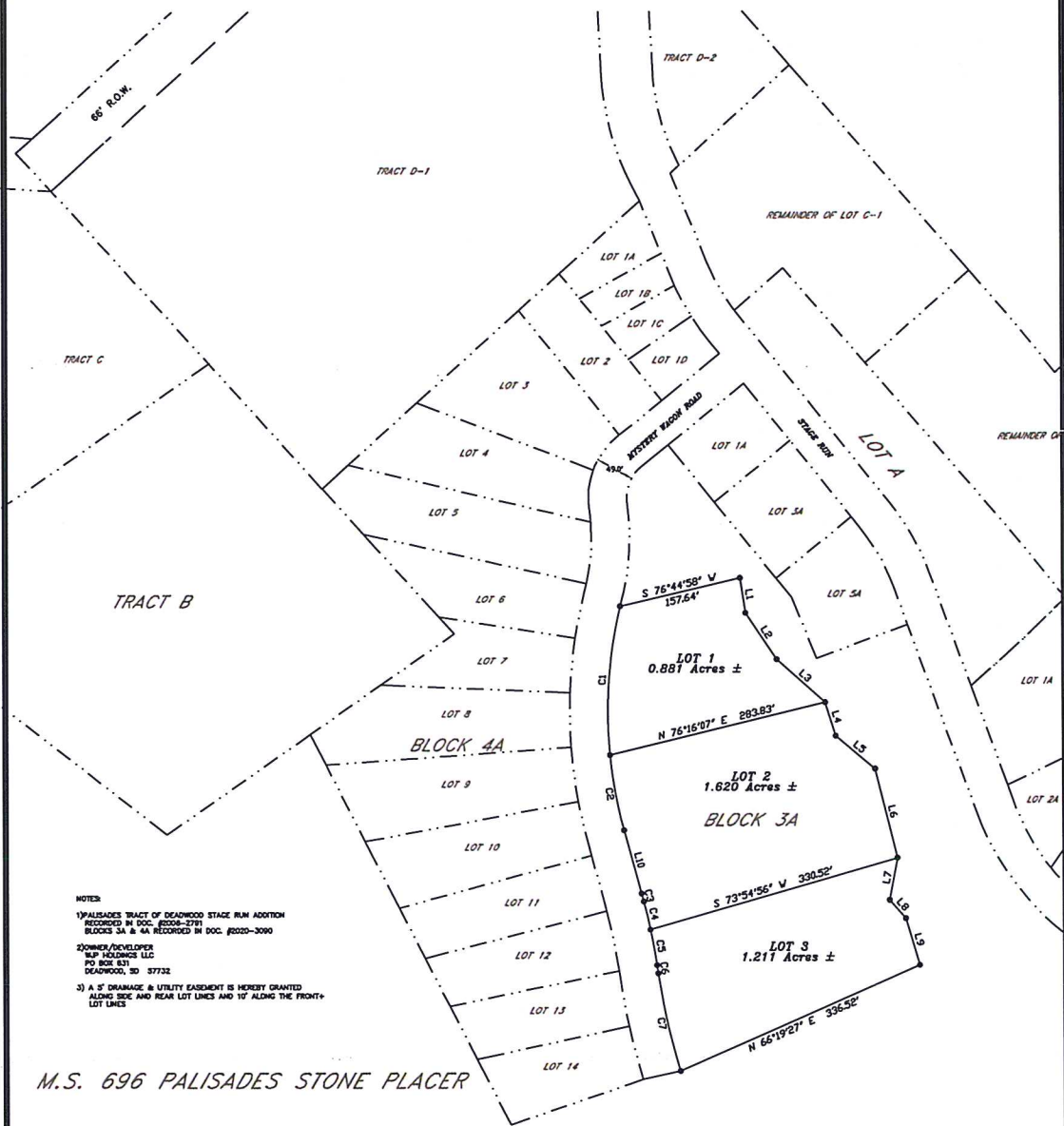


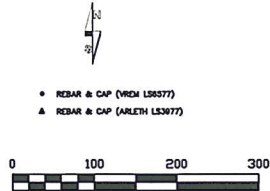
PLAT OF LOTS 1, 2, AND 3, BLOCK 3A OF PALISADES TRACT OF DEADWOOD STAGE  
 RUN ADDITION TO THE CITY OF DEADWOOD  
 LOCATED IN THE SW<sup>1</sup>/<sub>4</sub> OF SECTION 14, THE SE<sup>1</sup>/<sub>4</sub> OF SECTION 15, THE NE<sup>1</sup>/<sub>4</sub>NE<sup>1</sup>/<sub>4</sub>  
 OF SECTION 22 AND THE N<sup>1</sup>/<sub>2</sub>NW<sup>1</sup>/<sub>4</sub> OF SECTION 23, T5N, R3E, B.H.M.,  
 CITY OF DEADWOOD, LAWRENCE COUNTY, SOUTH DAKOTA



NOTES:  
 1) PALISADES TRACT OF DEADWOOD STAGE RUN ADDITION  
 RECORDED IN DOC. #2008-1741  
 BLOCKS 3A & 4A RECORDED IN DOC. #2020-3090  
 2) OWNER/DEVELOPER  
 NEW HORIZON LLC  
 PO BOX 831  
 DEADWOOD, SD 57732  
 3) A 5' DRAINAGE & UTILITY EASEMENT IS HEREBY GRANTED  
 ALONG SIDE AND REAR LOT LINES AND 10' ALONG THE FRONT  
 LOT LINES

M.S. 696 PALISADES STONE PLACER

PALISADES TRACT OF DEADWOOD STAGE RUN ADDITION



- REBAR & CAP (VREM L195377)
- ▲ REBAR & CAP (ARLETH L33077)

LINE	BEARING	DISTANCE
1	S 88°16'33" E	125.25'
2	S 76°44'58" W	157.64'
3	S 73°54'56" W	330.52'
4	S 75°54'56" W	330.52'
5	S 76°16'07" E	203.83'
6	S 76°16'07" E	203.83'
7	S 76°16'07" E	203.83'
8	S 76°16'07" E	203.83'
9	S 76°16'07" E	203.83'
10	S 76°16'07" E	203.83'
11	S 76°16'07" E	203.83'
12	S 76°16'07" E	203.83'
13	S 76°16'07" E	203.83'
14	S 76°16'07" E	203.83'

CURVE	RADIUS	ARC LENGTH	CHORD LENGTH	CHORD BEARING	DELTA ANGLE
01	573.25'	191.22'	191.22'	N 10°14'07" W	16°26'52"
02	573.25'	191.22'	191.22'	N 10°14'07" W	16°26'52"
03	573.25'	191.22'	191.22'	N 10°14'07" W	16°26'52"
04	573.25'	191.22'	191.22'	N 10°14'07" W	16°26'52"
05	573.25'	191.22'	191.22'	N 10°14'07" W	16°26'52"
06	573.25'	191.22'	191.22'	N 10°14'07" W	16°26'52"
07	177.53'	127.81'	127.67'	N 12°42'46" W	19°26'43"



Prepared By:  
**PONDEROSA LAND SURVEYS, L.L.C.**  
 332A WEST MAIN STREET  
 LEAD, SD 57754  
 (605) 722-3840

Date:	9/6/2021
Drawn By:	L. D. Vrem
Project No.:	21-527
Dwg. No.:	21-527.dwg