

United States Department of the Interior
National Park Service**National Register of Historic Places**
Continuation SheetDeadwood Historic District Amendment
2025

Name of Property

Lawrence, South Dakota

County and State

66000716

NR Reference Number

State Certification

As the designated authority under the National Historic Preservation Act, as amended,

I hereby certify that this ☒ additional documentation ☐ additional documentation: name change
☐ move ☐ removal ☐ othermeets the documentation standards for registering properties in the National Register of Historic
Places and meets the procedural and professional requirements set forth in 36 CFR Part 60._____
Signature of Certifying Official/Title_____
Date of Action**Federal Agency Certification**

As the designated authority under the National Historic Preservation Act, as amended,

I hereby certify that this ☐ additional documentation ☐ additional documentation: name change
☐ move ☐ removal ☐ othermeets the documentation standards for registering properties in the National Register of Historic
Places and meets the procedural and professional requirements set forth in 36 CFR Part 60._____
Signature of Certifying Official/Title_____
Date of Action**National Park Service Certification**

I hereby certify that this property is:

- ☐ entered in the National Register
☐ determined eligible for the National Register
☐ determined not eligible for the National Register
☐ removed from the National Register
☐ additional documentation accepted
☐ other (explain:) _____

Signature of the Keeper_____
Date of Action

United States Department of the Interior
National Park Service

National Register of Historic Places
Continuation Sheet

Deadwood Historic District Amendment
2025

Name of Property

Lawrence, South Dakota

County and State

66000716

NR Reference Number

5. Classification

Ownership of Property

(Check as many boxes as apply.)

Private:

☒

Public – Local

☒

Public – State

☒

Public – Federal

☒

Category of Property

(Check only **one** box.)

Building(s)

☐

District

☒

Site

☐

Structure

☐

Object

☐

Number of Resources within Property

(Do not include previously listed resources in the count)

Contributing

448

Noncontributing

288

buildings

3

sites

structures

objects

448

291

Total

Number of contributing resources previously listed in the National Register N/A (unable to determine)

**United States Department of the Interior
National Park Service****National Register of Historic Places
Continuation Sheet**

Deadwood Historic District Amendment 2025
Name of Property Lawrence, South Dakota
County and State 66000716
NR Reference Number

Purpose and Explanation of the Amendment

The **Deadwood Historic District (NRIS#66000716)** became a National Historic Landmark in 1961. It was administratively listed in the National Register in 1966. A National Register inventory form was completed in 1976; the form was not signed by the Keeper until 1985. In 1989, the Keeper accepted an amendment to the district. The 1989 amendment, which is the most recent documentation submitted concerning the district, provided some basic information pertinent to National Register standards at the time including: a discussion of National Register criterion, areas of significance, period of significance, USGS quadrangle map, photographs, more complete UTMS, and a bibliography.

Typical of 1970s-1980s forms, overall information provided in the nomination and amendment is minimal. Of the 739 resources within the boundary, approximately ten were discussed in the nomination and amendment. No map was submitted with the original nomination, and the amendment only included a USGS quadrangle map with a boundary.

This 2025 amendment assigns Contributing/Noncontributing statuses to all resources within the boundary based on survey occurring in 2022 through 2024, provides a map of Contributing/Noncontributing resources, and provides more concise UTM reference points.

The original district boundary remains unchanged. Two additional UTM points were added to the southwest corner to better represent the original boundary. As interpreted, the boundary was neither decreased nor increased.

7. DescriptionSummary

All buildings and substantial structures within the district boundary are included in this inventory. Standalone garages were generally recorded separately. Subterranean garages were generally not recorded separately since it was not possible to tell if they were connected to the house via an entryway and/or original to the house. In instances where it was clear that a garage was built as a standalone structure and connected to the house later, the garage was counted as a separate structure, per National Register guidelines.

Adams Street

8-12 Adams (LA00101668)

c.1900

Contributing

Saltbox roof. Symmetrical adjoining volumes. Wood siding. Shed roofed porches with turned columns.

**United States Department of the Interior
National Park Service****National Register of Historic Places
Continuation Sheet**Deadwood Historic District Amendment
2025

Name of Property

Lawrence, South Dakota

County and State

66000716

NR Reference Number

18 Adams (LA00101667)

c.1900

Contributing

Two story. Wood siding. Porch. Small dormer.

24 Adams (LA00101669)

c.1900

Contributing

Gabled front. Stucco. Cottage window. Turned porch columns.

26 Adams (LA00101670)

c.1904

Contributing (Garage Contributing)

Two story. Two-story porch. Wood siding.

29 Adams (LA00100024)

c.1904

Contributing

Gable and wing. Stucco and asphalt shingles. Paired 6/6 and 12-lite door on gable; entrance door on wing. Metal fence.

30 Adams (LA00101671)

c. 1904

Contributing (Garage Noncontributing)

1½ story. Gabled. 1/1s.

56 Adams (LA00101672)

c.1900

Noncontributing

Wide siding and t-11 siding. Deck to second story. Variety of windows.

Amelia Street

1 Amelia (LA00100154)

1973

Noncontributing

Side gabled. Faux board-and-batten.

3 Amelia (LA00100131)

1972

Noncontributing (Garage Noncontributing)

Front gabled. Infilled porch on façade.

**United States Department of the Interior
National Park Service****National Register of Historic Places
Continuation Sheet**Deadwood Historic District Amendment
2025Name of Property
Lawrence, South DakotaCounty and State
66000716

NR Reference Number

Burnham Avenue

1 Burnham (LA00101472)

1932

Contributing

Side gabled. Small. 2/2 windows. Stacked stone foundation. Gable over entrance.

5 Burnham (LA00100004)

c.1932

Contributing

Long and rectangular. Gable with asphalt shingles. Wood siding; siding in gable is decorative. Mostly 1/1 window; large picture window on façade. Modern door.

8 Burnham (LA00101664)

1976

Noncontributing (Garage Noncontributing)

Split-level.

21 Burnham (LA00101675)

c.1900

Contributing

Two-story. Hipped roof. 1/1s.

23 Burnham (LA00101676)

c.1890

Contributing

Gabled with cross gable at rear. Wood siding. Cottage window. 1/1s.

24 Burnham (LA00101677)

c.1895

Contributing

Side gabled. Hipped roof enclosed porch. Addition on rear.

26 Burnham (LA00101678)

c.1895

Contributing

Gabled front. Wood siding. 1/1s. Rear addition.

30 Burnham (LA00101437)

c.1895

Noncontributing

Heavily modified. Wide siding.

**United States Department of the Interior
National Park Service****National Register of Historic Places
Continuation Sheet**Deadwood Historic District Amendment
2025Name of Property
Lawrence, South DakotaCounty and State
66000716

NR Reference Number

31 Burnham (LA00101679)

c.1895

Contributing

Gabled front. Wood siding. Ornate squared bay window with arched 1/1s. Fretwork in gable.

44 Burnham (LA00101680)

c.1895

Contributing

Gabled and wing form.

45 Burnham (LA00101681)

c.1895

Contributing

Material modifications. Original form.

47 Burnham (LA00101682)

c.1895

Contributing

Some modifications to materials. Original form.

54 Burnham (LA00101637)

c. 1935

Noncontributing (Garage Noncontributing)

Side gabled. Vertical siding. Replacement windows.

60 Burnham (LA00101687)

c.1945

Noncontributing

Small. Gabled. 1/1s.

Centennial Avenue

10 Centennial (LA00100157)

1983

Noncontributing (Garage Noncontributing)

House is new or heavily modified. Cedar siding. 1/1s. 2.5 story. Atypical roof. Round corner. Large wood deck and long stairway.

19 Centennial (LA00101591)

c.1896

Contributing

Two story. Ornate porch.

**United States Department of the Interior
National Park Service****National Register of Historic Places
Continuation Sheet**

Deadwood Historic District Amendment 2025
Name of Property Lawrence, South Dakota
County and State 66000716
NR Reference Number

23 Centennial (LA00101592)

c.1899

Contributing

Two story. Wood siding. Ornate porch. Pediment dormer.

31 Centennial (LA00101594)

c.1877

Contributing

Two story. Gable and wing form. Enclosed porch. Decorative second story porch balustrade.

39 Centennial (LA00101597)

c.1890

Contributing

Two story. Wraparound two-story porch. 1/1s.

43 Centennial (LA00101598)

c.1892

Contributing

Two story. Paired 1/1s. Three square porch columns.

47 Centennial (LA00101600)

c.1898

Contributing

Two story. Cottage window. 1/1s. Tapered porch columns, kneewall.

49 Centennial (LA00100158)

1978

Noncontributing

Two story. Log. Gambrel roof. Wood deck. Fixed pane windows.

65 Centennial (LA00101589)

c.1939

Contributing

Side gabled with gabled volume.

Charles Street

Charles Street (Claim Jumpers Mobile Home Court)

c.1950

Noncontributing (site)

**United States Department of the Interior
National Park Service****National Register of Historic Places
Continuation Sheet**Deadwood Historic District Amendment
2025Name of Property
Lawrence, South DakotaCounty and State
66000716

NR Reference Number

1 Charles (LA00101602)

c.1890

Noncontributing (Garage Noncontributing)
Modified.

5 Charles (LA00101603)

c.1888

Contributing (Garage Contributing)

Gable and wing form. Stucco and stone veneer may date to POS. 1/1s.

9 Charles (LA00101604)

c.1932

Contributing (Garage Contributing)

Side gabled with gabled volumes on façade. Shingle siding. Arched door.

31 Charles (LA00101609)

c.1888

Contributing

Brick. Arched openings. Wood rear addition.

32 Charles (LA00100036)

c.1942

Noncontributing

Metal clad building commercial building. Front volume projects. Double entry doors. Flanking volumes have a paired fixed-pane window and glass block window.

61 Charles (LA00100038) (Hospital)

1949

Noncontributing

Two and three story volumes. Brick. Paired 1/1 configuration for most window openings. Building forms an L-shape; one story additions in crook of ell.

71 Charles (LA00100039) (Medical Offices)

c.1982

Noncontributing

Brick. One and two story volumes stepped back. Next to hospital.

81 Charles (LA00101599)

1970

Noncontributing

Front gabled. Recessed entry.

**United States Department of the Interior
National Park Service****National Register of Historic Places
Continuation Sheet**Deadwood Historic District Amendment
2025

Name of Property

Lawrence, South Dakota

County and State

66000716

NR Reference Number

83 Charles (LA00101567)

c.1898

Contributing

Two story. 1/1s. Shed roofed porch.

85 Charles (LA00101568)

c.1892

Contributing

Two story. Cube. 1/1s. Asbestos siding.

87-89 Charles (LA00100040)

1961

Noncontributing

Midcentury house. Side gable with protruding entrance gable. Wide siding with shutters. Gabled entrance volume veneered in brick.

88 Charles (LA001011570) (Creekside Clinic)

1990

Noncontributing

Modern gabled building.

96 Charles (LA00101571)

c.1895

Contributing (Garage Noncontributing)

Side gabled form. Brackets. Enclosed entrance.

98 Charles (LA00101572)

1900/58

Noncontributing (Garage Contributing)

Two story. Modified.

102 Charles (LA00101537)

c.1900

Contributing (Garage Noncontributing)

103 Charles (LA00101643)

1990

Noncontributing

Motel. Two story. U-shaped.

**United States Department of the Interior
National Park Service****National Register of Historic Places
Continuation Sheet**Deadwood Historic District Amendment
2025

Name of Property

Lawrence, South Dakota

County and State

66000716

NR Reference Number

106 Charles (LA00101588)

c.1896

Contributing (Garage Noncontributing)

Gabled with fishscales in gable. Hipped roof porch with turned columns. 1.1s.

110 Charles (LA00101576)

c.1900

Noncontributing

Modified, new materials, multiple volumes.

111 Charles (LA00101565)

1990

Noncontributing

Side gabled building associated with neighboring motel.

112 Charles (LA00101578)

c.1895

Contributing

Two story. Front facing gabled volume. Wide siding.

115 Charles (LA00101582)

c.1885

Noncontributing

Modified.

116 Charles (LA00101580)

c.1935

Contributing

Gabled with gabled entrance volume and porch. Brackets.

118 Charles (LA00101581)

c.1890

Contributing

Side gabled form. 1.1s. Rear addition.

119 Charles (LA00101583)

c.1896

Contributing

Gabled front. Hipped roof porch with turned columns. 1/1s.

**United States Department of the Interior
National Park Service****National Register of Historic Places
Continuation Sheet**Deadwood Historic District Amendment
2025

Name of Property

Lawrence, South Dakota

County and State

66000716

NR Reference Number

124 Charles (LA00101586)

c.1895

Contributing

Hipped roof with gabled volume on façade. 1/1s. Gabled entrance.

126 Charles (LA00101587)

c.1895

Noncontributing

Modified.

130 Charles (LA00101601)

c.1938

Noncontributing (Garage Noncontributing)

Modified.

136 Charles (LA00101659)

c.1939

Noncontributing

Gabled front. Wide siding.

137 Charles (LA00101638)

1990

Noncontributing

Two-story motel.

138 Charles (LA00101641)

c.1895

Contributing (Garage Noncontributing)

Hipped roof, gables on façade. 6/1s. Wide siding.

143 Charles (LA00101639)

c.1935

Contributing (Garage Contributing)

Simple Mission style. Mission parapet over door, vigas in gable.

144 Charles (LA00101642)

c.1890

Contributing

Brick. Three-sided ornate bay on façade. Arches over openings.

**United States Department of the Interior
National Park Service****National Register of Historic Places
Continuation Sheet**Deadwood Historic District Amendment
2025Name of Property
Lawrence, South DakotaCounty and State
66000716

NR Reference Number

147 Charles (LA00101640)

c.1932

Contributing (Garage Contributing)

Two story. Hipped roof. Enclosed porch. Wide siding.

148 Charles (LA00101645)

c.1890

Contributing (Garage Contributing)

Hipped roof. Enclosed porch with windows. Wide siding.

151 Charles (LA00101646)

c.1900

Noncontributing (Garage Noncontributing)

Heavily modified gable and wing form.

152 Charles (LA00101648)

c.1890

Contributing

Two story. Gabled with hipped addition. 1/1s. Pediment and turned columns at entry vestibule.

Cutaway corner.

157 Charles (LA00101644)

c.1934

Noncontributing

Service station. Rectangular. Stucco.

158 Charles (LA00100031)

c.1895

Contributing

160 Charles (LA00100044)

c.1895

Contributing

Two story. Stucco-like cladding. Hipped roof. 1/1 windows; some decorative 3/2. Modern wood porch. Addition on rear.

162 Charles (LA00100045)

c.1900

Noncontributing (Garage Noncontributing)

Small. Side gabled. Gable over porch. Replacement windows.

**United States Department of the Interior
National Park Service****National Register of Historic Places
Continuation Sheet**Deadwood Historic District Amendment
2025

Name of Property

Lawrence, South Dakota

County and State

66000716

NR Reference Number

164 Charles (LA00101636)

c.1895

Contributing (Garage Noncontributing)

Gable and wing form. 3/1s. Enclosed porch in ell.

166 Charles (LA00101650)

c.1910

Contributing

Small, side gabled. Wood siding. 1/1s/ Shed roof porch.

166.5 Charles (LA00101651)

1948

Noncontributing (Outbuilding Noncontributing)

Hipped roof. Wide siding.

168 Charles (LA00101652)

1925

Contributing (Garage Noncontributing)

Modern or heavily modified to look new. Gabled. 1/1s. Replacement materials.

169 Charles (LA00101656)

1985

Noncontributing

Prefab steel building.

170 Charles (LA00101654)

1960

Noncontributing

Prefab metal.

171 Charles (LA00101655)

Noncontributing

Modern steel storage units.

Child Street

100 Child (LA00100026)

1966

Noncontributing

Midcentury modern home. Shed roofs with attached garage and carport. Vertical wood and stone veneer cladding. Could be evaluated for individual eligibility within the district.

**United States Department of the Interior
National Park Service****National Register of Historic Places
Continuation Sheet**Deadwood Historic District Amendment
2025Name of Property
Lawrence, South DakotaCounty and State
66000716

NR Reference Number

Cliff Street

3 Cliff (LA00100046)

c.1895

Contributing

Side gabled form. 1/1s on a square bay. Asphalt shingle. Wood siding. Pediment over entrance.
Modern casement window flanks entrance.

20 Cliff (LA00100047)

1986

Noncontributing

Modern office. Side gabled. Cedar siding. Asphalt shingle. Partial brick veneer on façade.

22 Cliff (LA00100048)

1986

Noncontributing

Modern office. Side gabled. Cedar siding. Asphalt shingle. Partial brick veneer on façade.

50 Cliff (LA00100049)

1986

Noncontributing

Modern office. Side gabled. Cedar siding. Seam metal roof.

64 Cliff (LA00100096)

c.1920

Noncontributing.

Gable and wing form. Replacement siding.

66 Cliff (LA00100097)

c.1910

Contributing

Two story. Gabled. Wood siding. Variety of windows. Gabled entrance volume.

74 Cliff (LA00100098)

c.1890

Contributing

Modified Queen Anne form. Turret with 1/1 windows. Wood siding and wood surrounds. Porch enclosed with fixed-pane windows.

**United States Department of the Interior
National Park Service****National Register of Historic Places
Continuation Sheet**Deadwood Historic District Amendment
2025

Name of Property

Lawrence, South Dakota

County and State

66000716

NR Reference Number

Crescent Drive

Crescent

1956-70

Noncontributing (sites)

Football and baseball fields.

10 Crescent (LA00101624)

1963

Noncontributing

Ranch. Side gabled.

12 Crescent

c.1970

Noncontributing

Ranch. Side gabled.

14 Crescent (LA00101647)

1978

Noncontributing (Garage Noncontributing)

Modern split-level.

16 Crescent (LA00101614)

1978

Noncontributing

Modern. Side gabled.

40 Crescent (LA00101749) (Days of 76 Museum Complex)

c.2013

Noncontributing

Museum.

57 Crescent (LA00101774) (Shops)

1980

Noncontributing

Metal building(s).

60 Crescent (LA00100126) (Treatment Plant)

1990

Noncontributing

Shed and flat roofs. Masonry walls.

**United States Department of the Interior
National Park Service****National Register of Historic Places
Continuation Sheet**Deadwood Historic District Amendment
2025

Name of Property

Lawrence, South Dakota

County and State

66000716

NR Reference Number

Dakota Street

12 Dakota (LA00101616)

c.1900

Noncontributing

Cube. Heavily modified.

18 Dakota (LA00101617)

c.1900

Noncontributing

Near ruin. Front gabled.

51 Dakota (LA00101683)

c.1895

Contributing

Clipped gable. Stacked stone foundation. 1/1s. Fishscales in gable.

Deadwood Street

21 Deadwood (LA00101620)

1970

Noncontributing

Small office. Stone veneer, shingles upper section.

27 Deadwood (LA00101621)

c.1897

Contributing

Three story. Stone.

Deadwood Mountain Drive

1906 Deadwood Mountain Drive (LA00101497) (Slime Plant)

1906

Contributing

Denver Avenue

10 Denver (LA00101625)

c.1895

Contributing

Side gabled. Tapered porch columns.

**United States Department of the Interior
National Park Service****National Register of Historic Places
Continuation Sheet**Deadwood Historic District Amendment
2025

Name of Property

Lawrence, South Dakota

County and State

66000716

NR Reference Number

15 Denver (LA00101626)

c.1895

Contributing

Gable and wing form. Wood siding. 1/1 windows. Porch with simple square columns. Asphalt shingles. Replacement door.

18 Denver (LA00101627)

c.1890

Noncontributing.

19 Denver (LA00101629)

c.1900

Contributing

Gabled. Wood siding. Fishscales in gable. Built downslope.

20 Denver (LA00101628)

c.1890

Contributing

Gable front. Enclosed porch. Wood siding.

22 Denver (LA00101632)

c.1908

Contributing

Hipped roof. Wrap around porch. Hipped addition. Wood siding.

25 Denver (LA00101633)

c.1900

Contributing

Side gabled with gabled entry volume. Board-and-batten siding.

32 Denver (LA00101713)

c.1895

Contributing

Front gabled. 4/1s. Wood siding.

35 Denver (LA00101881)

c.1905

Contributing

37 Denver (LA00101684)

c.1895

Noncontributing

Modified.

**United States Department of the Interior
National Park Service****National Register of Historic Places
Continuation Sheet**Deadwood Historic District Amendment
2025

Name of Property

Lawrence, South Dakota

County and State

66000716

NR Reference Number

38 Denver (LA00101813)

c.1930

Noncontributing

Modern stone veneer.

42 Denver (LA00101814)

c.1895

Contributing

Two story. Wood siding. Squared bay window.

43 Denver (LA00101631)

c.1920

Contributing.

6-stall garage. Stucco.

46 Denver (LA00101815)

c.1895

Noncontributing

Modified.

47 Denver (LA00101816)

c.1895

Contributing

52 Denver (LA00101817)

c.1890

Contributing (Garage Contributing)

Two story. Decorative shingles in gable.

57 Denver (LA00101818)

c.1895

Noncontributing (Garage Noncontributing)

Modified.

62 Denver (LA00101819)

c.1900

Contributing (Garage Contributing)

Cube.

64 Denver (LA00101833)

c.1896

Noncontributing

Cube form. New windows and doors. Wood deck on façade.

**United States Department of the Interior
National Park Service****National Register of Historic Places
Continuation Sheet**Deadwood Historic District Amendment
2025

Name of Property

Lawrence, South Dakota

County and State

66000716

NR Reference Number

75 Denver (LA00101821)

c.1880

Contributing

Two story. Long foot bridge.

93 Denver (LA00101809)

c.1939

Contributing

Side gabled. Clipped gables. 4/1s.

101 Denver (LA00101823)

c.1935

Noncontributing

New construction of heavily modified.

108 Denver (LA00101825)

1950

Noncontributing

Side gabled. Metal roof. Garage below second story. Wood deck.

109 Denver (LA00101826)

c.1890

Noncontributing

Modified. Chicago style windows. Wide siding, possibly asbestos.

110 Denver (LA00101827)

c.1945

Noncontributing

Front gabled. 1½ story. Wide siding.

118 Denver (LA00101828)

c.1905

Contributing

Cube form. Wood siding. Large new deck.

120 Denver (LA00101218)

1950

Noncontributing (Garage Noncontributing)

CMU built garage at street level with deck above.

United States Department of the Interior
National Park Service**National Register of Historic Places**
Continuation SheetDeadwood Historic District Amendment
2025

Name of Property

Lawrence, South Dakota

County and State

66000716

NR Reference Number

124 Denver (LA00101829)

1955

Noncontributing

New large deck.

Dudley Street

2 Dudley (LA00101830)

c.1900

Contributing

Two story. Stone and wood. Gabled dormers.

16 Dudley (LA00100149)

c.1900

Contributing

Two story gable. Stucco and wood siding. Car port. Wood porch. 1/1s.

8 Dudley (LA00101831)

c.1900

Noncontributing (Garage Noncontributing)

Modified cube form with additions. New siding and windows.

20 Dudley (LA00101797)

c.1900

Noncontributing

Modified.

Dunlop Street

Dunlop (LA00100116) (City Shop)

1990

Noncontributing

2 Dunlop (LA00101820)

c.2000

Noncontributing

4-unit condo with garage below.

15 Dunlop (LA00101787)

1985

Noncontributing

Metal roof. T-11 siding.

**United States Department of the Interior
National Park Service****National Register of Historic Places
Continuation Sheet**Deadwood Historic District Amendment
2025

Name of Property

Lawrence, South Dakota

County and State

66000716

NR Reference Number

32 Dunlop (LA00101613)

c.1936

Noncontributing

Modified.

35 Dunlop (LA00100132)

c.1895

Noncontributing (Garage Noncontributing)

Heavily modified. Variety of windows.

39 Dunlop (LA00100133)

c.1895

Contributing (Garage Contributing)

Two story. Side gabled with gabled dormer. Partial hipped roof porch. 1/1s.

41 Dunlop (LA00100134)

c.1924

Contributing

Side gabled with gabled entrance with brackets. Additions and attached garage. Wide siding.

42-44 Dunlop (LA00100135)

c.1930

Contributing (Garage Contributing)

Side gabled, gabled addition. Stucco. 3/1s. Gabled entrance with wood steps.

50 Dunlop (LA00100136)

1975

Noncontributing

Has a two story and one story volume. Garage under two-story and attached at rear. Variety of windows.

51 Dunlop (LA00101790)

1958

Noncontributing

Modern log house.

53 Dunlop (LA00100137)

1974

Noncontributing

Side gabled apartments.

**United States Department of the Interior
National Park Service****National Register of Historic Places
Continuation Sheet**Deadwood Historic District Amendment
2025

Name of Property

Lawrence, South Dakota

County and State

66000716

NR Reference Number

54 Dunlop (LA00100138)

1974

Noncontributing

Single story. Side gabled. Wide siding.

56 Dunlop (LA00100139)

1974

Noncontributing

Single story. Side gabled. Wide siding.

58 Dunlop (LA00100141)

1974

Noncontributing

Single story. Side gabled. Wide siding.

67 Dunlop (LA00100116) (Shop)

1990

Noncontributing

Emery Street

7 Emery (LA00101792)

c.1905

Contributing (Garage Noncontributing)

Cube form with rear addition. 1/1s.

Filmore Street

7 Filmore (LA00101795)

c.1895

Noncontributing

Modified siding, windows.

15 Filmore (LA00101808)

c.1895

Noncontributing

17 Filmore (LA00000886)

c.1900

Contributing

Hipped roof, wood siding, 1/1 windows. Porch wraps onto the two elevations. Porch is newer and has a modern balustrade.

**United States Department of the Interior
National Park Service****National Register of Historic Places
Continuation Sheet**Deadwood Historic District Amendment
2025

Name of Property

Lawrence, South Dakota

County and State

66000716

NR Reference Number

Forest Avenue

1 Forest (LA00101786)

c.1890

Contributing

15 Forest (LA00101798)

c.1892

Contributing

Ornate Victorian.

41 Forest (LA0010802)

c.1892

Contributing (Garage Contributing)

Tudor Revival.

43 Forest (LA00101803)

c.1886

Contributing

Second Empire.

47 Forest (LA00101805)

c.1890

Contributing

53 Forest (LA00101806)

c.1883

Contributing

Front gabled. Squared window bay.

57 Forest (LA00101844)

c.1890

Noncontributing

Modified. Deck on front.

61 Forest (LA00101862)

c.1897

Contributing

Two story.

65 Forest (LA00101859)

c.1896

Contributing

**United States Department of the Interior
National Park Service****National Register of Historic Places
Continuation Sheet**Deadwood Historic District Amendment
2025

Name of Property

Lawrence, South Dakota

County and State

66000716

NR Reference Number

69 Forest (LA00101860)

c.1891

Contributing

71 Forest (LA00101861)

c.1891

Contributing

Fishscale shingles in gable.

79 Forest (LA00101863)

c.1897

Contributing

83 Forest (LA00101864)

c.1897

Noncontributing

Modified.

91 Forest (LA00101866)

c.1897

Contributing

Two story.

97 Forest (LA00101867)

c.1893

Contributing

Three-sided bay window.

101 Forest (LA00101868)

c.1900

Noncontributing

Modified siding, windows, porch.

107 Forest (LA00101882)

c.1900

Contributing

109 Forest (LA00101870)

c.1900

Contributing

Modified siding, windows.

**United States Department of the Interior
National Park Service****National Register of Historic Places
Continuation Sheet**Deadwood Historic District Amendment
2025

Name of Property

Lawrence, South Dakota

County and State

66000716

NR Reference Number

111 Forest (LA00101858)

c.1935

Noncontributing

New construction or heavily modified.

Freemont Street

26 Fremont (LA00101875)

c.1895

Noncontributing

Guy Street

18 Guy (LA00101877)

c.1934

Noncontributing

Modified.

21 Guy (LA00101878)

c.1908

Contributing (Garage Contributing)

Craftsman.

Harrison Street

4 Harrison (LA00101879)

1951

Noncontributing

Midcentury. Brick.

5 Harrison (LA00101880)

Ca.1939

Contributing (Garage Noncontributing)

Side gabled.

10 Harrison (LA00101871)

c.1885

Noncontributing

14 Harrison (LA00101869)

c.1890

Contributing

Square bay window.

**United States Department of the Interior
National Park Service****National Register of Historic Places
Continuation Sheet**Deadwood Historic District Amendment
2025

Name of Property

Lawrence, South Dakota

County and State

66000716

NR Reference Number

Highland Avenue

47 Highland (LA00101836)

c.1935

Contributing

Stucco. Gabled entry. 4/1s.

Jackson Street

5 Jackson Street (LA00101835)

c.1885

Contributing

Altered gable form. Stucco. 1/1s.

11 Jackson (LA00101841)

1942

Noncontributing

Modified.

15 Jackson (LA00101842)

1941

Noncontributing

Modified.

25 Jackson (LA00101843)

c.1895

Contributing (Garage Noncontributing)

Cube. Wood siding.

26 Jackson (LA00101857)

c.1903

Contributing

Cube. Hipped roof porch.

31 Jackson (LA00101845)

c.1895

Contributing

32 Jackson (LA00101834)

c.1903

Contributing

Gambrell roof. Wood siding. Attached square garage.

**United States Department of the Interior
National Park Service****National Register of Historic Places
Continuation Sheet**Deadwood Historic District Amendment
2025

Name of Property

Lawrence, South Dakota

County and State

66000716

NR Reference Number

33 Jackson (LA00101847)
1938
Contributing (Garage Contributing)

33.5 Jackson (LA00101848)
1938
Contributing (Garage Contributing)

34 Jackson (LA00101849)
1955
Noncontributing
Midcentury.

35 Jackson (LA00101852)
c.1905
Noncontributing
Two story gable and wing form. Sliding screen doors on both levels.

36 Jackson (LA00101850)
c.1903
Contributing (Garage Contributing)

37 Jackson (LA00101851)
c.1900
Contributing
Wide wood siding. 3/1s.

41 Jackson (LA00101853)
c.1900
Noncontributing
Modified. New siding, windows, deck.

Jefferson Street

8 Jefferson (LA00101855)
c.1931
Contributing (Garage Contributing)
1.5 story. Side gabled.

18 Jefferson (LA00101710)
c.1900
Noncontributing
Side gabled.

**United States Department of the Interior
National Park Service****National Register of Historic Places
Continuation Sheet**Deadwood Historic District Amendment
2025

Name of Property

Lawrence, South Dakota

County and State

66000716

NR Reference Number

22 Jefferson (LA00101807)

c.1900

Contributing (Garage Contributing)

24 Jefferson (LA00101715)

c.1938

Contributing

Reserved Art Moderne stylings. Stucco. 1/1s.

30 Jefferson (LA00101716)

c.1880

Contributing

Cross gable with gambrel roof addition. Stucco. 6/6s. Possibly remodeled 1920s to current appearance.

31 Jefferson (LA00101717)

c.1905/35

Contributing (Garage Contributing)

Front gabled. 4/1s.

38 Jefferson (LA00101718)

c.1879

Contributing

Side gabled with centered gable. 1/1s. Two-story porch.

40 Jefferson (LA00101719)

1962

Noncontributing

Ranch. Brick veneer lower level.

John Street

1 John (LA00101720)

1963

Noncontributing

Ranch.

2 John (LA00101722)

1954

Noncontributing

Ranch.

United States Department of the Interior
National Park Service**National Register of Historic Places**
Continuation SheetDeadwood Historic District Amendment
2025

Name of Property

Lawrence, South Dakota

County and State

66000716

NR Reference Number

3 John (LA00101721)

1963

Noncontributing

4 John (LA00101736)

1959

Noncontributing

Ranch.

Lee Street

5 Lee (maybe 7 too) (LA00101724)

1933

Contributing

Stucco. Service station.

12 Lee (LA00101726)

1915-23

Noncontributing

One-story. Stucco.

25 Lee (LA00101727) (Hotel Gold Dust)

1897-1903

Contributing

Three story. Brick.

27 Lee (LA00101728)

1885

Contributing

Small. Board-and-batten siding second story.

29 Lee (LA00101729)

1880-85

Contributing

37 Lee (LA00101796)

1937

Contributing

Stucco. 4/1s. Some wood siding infill.

**United States Department of the Interior
National Park Service****National Register of Historic Places
Continuation Sheet**Deadwood Historic District Amendment
2025

Name of Property

Lawrence, South Dakota

County and State

66000716

NR Reference Number

Lincoln Avenue

4 Lincoln (LA00101730)

1885

Contributing

Clipped gabled with clipped gabled additions. One story. 6/1s.

8 Lincoln (LA00101731)

1885

Contributing

Two story. Gabled front. Classical columns. Fretwork in gable.

11 Lincoln (LA00101732)

1930

Contributing

Craftsman. Brick.

12 Lincoln (LA00101733)

1892

Contributing

Queen Anne. Ornate.

14 Lincoln (LA00101734)

1938

Contributing

Side gabled with gabled volumes on façade.

17 Lincoln (LA00101700)

1895

Contributing (Garage Contributing)

Two story. 3/1s. brackets. Modified into Craftsman style circa 1910s.

20 Lincoln (LA00101725)

1885

Contributing

Wood siding. Three-sided bay on façade. Enclosed porch.

21 Lincoln (LA00101723)

1903

Contributing

Queen Anne.

**United States Department of the Interior
National Park Service****National Register of Historic Places
Continuation Sheet**Deadwood Historic District Amendment
2025Name of Property
Lawrence, South DakotaCounty and State
66000716

NR Reference Number

23-25 Lincoln (LA00101699)

1898

Contributing

Front gabled. Porch with kneewall. 4/1s. Brackets in gable. Duplex.

27 Lincoln (LA00101691)

1898

Contributing

Two story. Tapered columns first story porch, turned on second story. Wood siding. 1/1s. Cottage window. Enclosed porch with windows above garage.

28 Lincoln (LA00101692)

1895

Contributing

Stuccoed.

32 Lincoln (LA00101693)

1881

Noncontributing (Garage Noncontributing)

Altered. Wide siding.

35 Lincoln (LA00101697)

1930

Contributing (Garage Contributing)

Gabled dormers. Wood siding.

36 Lincoln (LA00101696)

1903

Contributing (Garage Contributing)

Brick. Stone courses.

37 Lincoln (LA00101711)

1880

Contributing

Two story. Front gabled. Wood siding. 1/1s. Hipped roof porch.

39 Lincoln (LA00101688)

1880

Contributing (Garage Noncontributing)

Gabled front. Porch with turned columns. 1/1s. Decorative shingles in gable.

**United States Department of the Interior
National Park Service****National Register of Historic Places
Continuation Sheet**Deadwood Historic District Amendment
2025Name of Property
Lawrence, South DakotaCounty and State
66000716

NR Reference Number

42 Lincoln (LA00101701)

1885

Contributing

Two story. Wood siding. Arched windows. 1/1s.

43 Lincoln (LA00101704)

1898

Noncontributing

Modified.

44-46 Lincoln (LA00101702)

1900

Contributing

Duplex. Two story porch with turned columns.

47 Lincoln (LA00101705)

1934

Noncontributing

Stucco. Side gabled. Rear additions. 6/6s.

48 Lincoln (LA00101705)

1895

Noncontributing (Garage Noncontributing)

Gabled front. Modified.

51 Lincoln (LA00101706)

1905

Contributing (Garage Contributing)

Gable and wing form. Porch enclosed with windows.

52 Lincoln (LA00101708)

1885

Contributing

Two story. Gabled and wing form. Wood siding. 1/1s.

53 Lincoln (LA00101707)

1885

Contributing (Garage Contributing)

Gable and wing form. Three sided bay window with 1/1s/. Stucco.

**United States Department of the Interior
National Park Service****National Register of Historic Places
Continuation Sheet**Deadwood Historic District Amendment
2025

Name of Property

Lawrence, South Dakota

County and State

66000716

NR Reference Number

56 Lincoln (LA00101709)

1938

Contributing

Log house. 4/1s.

57 Lincoln (LA00101747)

1890

Contributing

Side gabled with gabled volumes. Wood siding. 1/1s.

58 Lincoln (LA000101698)

1898

Noncontributing

Modified cube form.

66 Lincoln (LA00101735)

1900

Contributing (Garage Noncontributing)

Heavily modified.

69 Lincoln (LA00101762)

1890

Contributing

Gambrel roof. Enclosed porch with large picture window.

Madison Street

1 Madison (LA00101763)

1992

Noncontributing

15 Madison (LA00101764)

1900

Noncontributing

Modified.

35 Madison (LA00101766)

1900

Contributing

38 Madison (LA00101765)

1900

Noncontributing

**United States Department of the Interior
National Park Service****National Register of Historic Places
Continuation Sheet**Deadwood Historic District Amendment
2025

Name of Property

Lawrence, South Dakota

County and State

66000716

NR Reference Number

58 Madison (LA00101785)

1900

Contributing (Garage Contributing)

61 Madison (LA00101773)

1900

Noncontributing

Main Street

68 Main (LA00100005) (Deadwood Station)

1952

Noncontributing (2)

Modernized. Two buildings; one story business and two-story hotel.

270 Main (LA00101776)

1990

Noncontributing

Hotel.

308 Main (LA00101780)

1895

Contributing (Garage Contributing)

Foursquare. Hipped roof porch with tapered columns. 1/1s.

312 Main (LA00101738)

1900

Contributing (Garage Contributing)

Front gabled. Squared window bay. Wood siding.

388 Main (LA00101758)

1900360 Main (LA00101748) (Spring Hill Suites – Marriott)

1995

Noncontributing

Hotel.

Contributing

Hipped roof with gabled rear addition. 1/1s. Hipped roof porch.

390 Main (LA00101759)

Ca.1939

Contributing (Gabled two-story building to rear Noncontributing)

Cross gabled. 4/1s.

**United States Department of the Interior
National Park Service****National Register of Historic Places
Continuation Sheet**Deadwood Historic District Amendment
2025Name of Property
Lawrence, South DakotaCounty and State
66000716

NR Reference Number

402 Main (LA00101453)

1990

Noncontributing

One story. Brick. Convenience store/gas station.

424 Main (LA00101276)

1901

Contributing

Two story. Brick. "ILU 1898" below cornice.

470 Main (LA00101256)

1960

Noncontributing

Two story. 1/1s and fixed pane. Side rear addition.

478 Main (LA00101258)

1925

Contributing

Gambrel roof. Wood siding. 6/6s. Small addition.

480 Main (LA00101286)

1936

Contributing

Side gabled with gable on façade. Brick chimney stack on façade.

484 Main (LA00101285)

1933

Contributing

Gable and wing form. Stucco. Brackets in gable. Attached garage in rear.

560 Main (LA00101279)

1924

Contributing

False front. Commercial. Wood siding over stone. Second story porch.

575 Main

2000

Noncontributing

Hotel and Casino.

**United States Department of the Interior
National Park Service****National Register of Historic Places
Continuation Sheet**Deadwood Historic District Amendment
2025Name of Property
Lawrence, South DakotaCounty and State
66000716

NR Reference Number

596 Main (LA00101249)

1896

Contributing

Two story. Brick. Commercial. Decorative cornice with brackets.

604 Main (LA00101221)

1897

Contributing

One story. Brick. Commercial. Rear addition. Recessed central entry. Decorative brickwork in cornice.

606 Main (LA00101229)

1891-97

Contributing

Two story. Brick. Arches over first floor openings. Bay windows second floor. Ornate cornice with "1894".

610 Main (LA00101358)

1897-1903

Contributing

Two story. Brick. Paired 1/1s second story.

616 Main (LA00101344)

1894

Contributing

Two story. Four bay windows on second story. Brick. Ornate cornice.

622 Main (LA00101315)

1897-1903

Contributing

Mission style design.

624 Main (LA00101314)

1897-1903

Contributing

Two story. Brick. Four 1/1s second story.

626 Main (LA00101345)

1898

Contributing

Two story. Brick. Four 1/1s on second story. Ornate cornice.

**United States Department of the Interior
National Park Service****National Register of Historic Places
Continuation Sheet**Deadwood Historic District Amendment
2025

Name of Property

Lawrence, South Dakota

County and State

66000716

NR Reference Number

628 Main (LA00101309) (Fairmont Hotel)

1897-1903

Contributing

Three story. Red-pink sandstone. Three-story corner turret.

629 Main (LA00101310)

1880/93

Contributing

One story. Brick. Stone nameplate above door "Ruth Bros".

630 Main (LA00101311) (Mustang Sally's)

1930

Contributing

Streamline Modern. Stucco. Cylindrical central volume.

633 Main (LA00101312) (Bullock Hotel)

1894-96

Contributing

Three story. Sandstone. Ornate cornice.

637 Main (LA00101313)

1891-97

Contributing

1½ story. Sandstone and brick. Bay windows above storefront.

638 Main (LA00101308)

1891-97

Contributing

Two story. Brick. 3/1s in downsized openings in second story. Ornate cornice. Grain Belt Beer ghost sign on side elevation.

639 Main (LA00101319)

1894

Contributing

Two story. Wood clad storefront. Faux brick veneer second story.

641 Main (LA00101320)

1894

Contributing

Two story. Brick. 1/1s second story. Ornate cornice.

**United States Department of the Interior
National Park Service****National Register of Historic Places
Continuation Sheet**Deadwood Historic District Amendment
2025Name of Property
Lawrence, South DakotaCounty and State
66000716

NR Reference Number

643 Main (LA00101321)

1879/93

Contributing

Two story. Painted brick and stone on second story along with downsized windows.

644 Main (LA00101322)

1970

Noncontributing

Two story. Brick and pebbled panel with fixed windows on second story.

645 Main (LA00101323)

1879-80

Contributing

Two story. Brick. Downsized windows on second story. Ornate cornice.

647 Main (LA00101324)

1879-80

Contributing

Two story. Brick. Three arched 1/1s second story. Ornate cornice.

649 Main (LA00101324)

1880-85

Contributing

Two story. Brick. Three arched 1/1s second story. Ornate cornice.

650 Main (LA00101326)

1880/1945

Contributing

Two story. Brick. Moderne storefront. Arched 1/1s second story. Ornate cornice. Deck on side elevation.

651 Main (LA00101298)

1897/1903

Contributing

One story. Brick. Stone parapet.

652 Main (LA00101296)

1891-97

Contributing

Two story. Brick. Pedimented bay flanked by windows on second story. Ornate cornice with "1898".

**United States Department of the Interior
National Park Service****National Register of Historic Places
Continuation Sheet**Deadwood Historic District Amendment
2025

Name of Property

Lawrence, South Dakota

County and State

66000716

NR Reference Number

653 Main (LA00101316)

1879-88

Contributing

Two story. Brick. Three windows on second story.

654 Main (LA00101291)

1957

Noncontributing

Modern wood structure with a rooftop porch.

655 Main (LA00101292)

1880/1935

Contributing

Two story. Half-log siding on first story, brick on second story.

657 Main (LA00101293) (Saloon No. 10)

1910/38

Contributing

Two story. Half-log siding on first story, brick on second story. 1/1s and doors on second story.
“Levison” in parapet.

658 Main (LA00101294)

1880-85

Contributing

Two story. Wood siding. Porch on second story. 1/1s second story.

660 Main (LA00101307)

1879-85

Contributing

Two story. Wood siding above storefront has 1/1s.

662 Main (LA00101288)

1880-85

Contributing

Three story. Italianate window lintels. Ornate cornice.

666 Main (LA00101300)

1878-1910

Contributing

Two story. Brick. “1878-1910” in parapet.

**United States Department of the Interior
National Park Service****National Register of Historic Places
Continuation Sheet**Deadwood Historic District Amendment
2025

Name of Property

Lawrence, South Dakota

County and State

66000716

NR Reference Number

667 Main (LA00101301)

1879-85

Contributing

Two story. Wood siding. 1/1s on second story.

668 Main (LA00101302)

1880/1938

Contributing

Two story. Brick. Large 2/1s on second story.

669 Main (LA00101303)

1879-85

Contributing

False front. Wood siding on second story, no openings. Brackets.

671 Main (LA00101305)

1880-85

Contributing

False front. Wood siding with no openings above storefront. Brackets at parapet.

672 Main (LA00101304)

1879/98

Contributing

Two story. Brick. Central entrance access second story. 1/1s on second story, brick arch lintels.
Decorative brickwork at cornice.

673 Main (LA00101329)

1879/1902

Contributing

Two story. Half-log storefront. Brick second story with arched 1/1s.

674 Main (LA00101289)

1879/83

Contributing

Two story. Stucco-like material on first story, wood siding and paired 1/1s on second story. Awning.

677 Main (LA00101318)

1880-85

Contributing

Three story. Brick. Ornate cornice.

**United States Department of the Interior
National Park Service****National Register of Historic Places
Continuation Sheet**Deadwood Historic District Amendment
2025

Name of Property

Lawrence, South Dakota

County and State

66000716

NR Reference Number

678 Main (LA00101349)

1885

Contributing

One story. Light colored brick.

680 Main (LA00101351)

1953

Noncontributing

Brick. 1/1s on second story.

681 Main (LA00101350)

2009

Noncontributing

Infill. "2009" below cornice.

682-84 Main (LA00101352)

1953

Noncontributing

Brick. 1/1s on second story.

688 Main (LA00101353)

1954-55

Noncontributing

1½ story. Brick.

692 Main (LA00101354)

1905/33

Contributing

Three story. Brick and stone. Chicago style and 1/1s.

696 Main (LA00101355)

1904

Contributing

Classical styling. Stone and brick. Old bank.

700 Main (LA00101367) (Franklin Hotel)

1903/29

Contributing

Four story. Stone and brick. Recessed central volume.

United States Department of the Interior
National Park Service

National Register of Historic Places
Continuation Sheet

Deadwood Historic District Amendment
2025

Name of Property

Lawrence, South Dakota

County and State

66000716

NR Reference Number

707 Main (LA000101357) (Silverado, old Franklin Garage)
1933

Contributing

One story. Brick.

715 Main (LA00101348) (Masonic Lodge)
1892/02/19

Contributing

Three story. Brick and stone.

721 Main (LA00101359) (Wells Fargo Bank)
1981

Noncontributing

One story. Modern. Brick.

735 Main (LA00101359)
1930

Contributing

One story. Brick. Simple.

745 Main (LA00101361)
1939

Contributing

One story. Stucco-like cladding. 1/1s. Flat roof with parapet.

750 Main (LA00101362) (St. Ambrose School)
1917-18

Contributing (Garage Noncontributing)

1½ story. Brick. 1/1s. Dormer with 6/1s.

751-53 Main (LA00101363)
1937

Noncontributing

One story. Brick and stucco. Garage bays, some have garage doors. Other openings infilled. Building likely modified.

760 Main (LA00101364) (St. Ambrose Church)
1936

Contributing

Gabled and gabled volumes. Corner tower. Brick. Arch and 1/1s.

**United States Department of the Interior
National Park Service****National Register of Historic Places
Continuation Sheet**Deadwood Historic District Amendment
2025

Name of Property

Lawrence, South Dakota

County and State

66000716

NR Reference Number

760 Main (LA00101365) (St. Ambrose Rectory)

1936

Contributing

Two story. Brick. Clipped gabled dormer. Gable over entrance.

762 Main

1936

Contributing

Two story gable and wing form.

764 Main (LA00101278)

1890

Contributing

Two story. Wood siding. Two-porch. Addition rear corner.

766 Main (LA00101219)

1890

Contributing

Queen Anne. Rough-cut stone on façade; clapboard on other elevations. Fishscale shingles in gable. Porch with spindlework. Multi-pane windows.

768 Main (LA00101269)

1895

Contributing

Cube form with basement. Stucco. 1/1s.

770 Main (LA00101274)

1890

Contributing

Two story. Hipped roof. Stucco. Two entry doors on first level. Two story porch.

771 Main (LA00101275)

1940-50

Noncontributing

Side gabled with gabled dormer. Stucco.

772 Main (LA00101277)

1890

Contributing (Garage Contributing)

Two story. Hipped roof. Two-story porch.

**United States Department of the Interior
National Park Service****National Register of Historic Places
Continuation Sheet**Deadwood Historic District Amendment
2025

Name of Property

Lawrence, South Dakota

County and State

66000716

NR Reference Number

781 Main (LA00101268)

1965

Noncontributing

Ranch. Side gabled with metal roof.

784 Main (LA00101366)

1895

Contributing

Two story. Wraparound porch, enclosed second story. Classical porch columns. Two entrances and bay window on first story façade.

785 Main (LA00101251)

1900

Contributing

Gabled. Enclosed porch. Addition rear corner.

786 Main (LA00101250)

1900

Contributing

Gable with metal roof. Enclosed hipped roof porch. Asbestos siding. Multi-pane windows.

787 Main (LA00101252)

1924

Noncontributing

Two story. Wide siding. Variety of windows. Wraparound porch. Wide siding.

788 Main (LA00101253)

1900

Noncontributing (Garage Noncontributing)

Modified. Gabled. Hipped roof porch with pediment. 1/1s. Cedar siding. Fishscales.

789 Main (LA00101254)

1924

Contributing

Side gabled. Tapered porch columns. Gabled dormer.

792 Main (LA00101255)

1894

Contributing

Gabled. Stucco. Dormer on side elevation.

**United States Department of the Interior
National Park Service****National Register of Historic Places
Continuation Sheet**Deadwood Historic District Amendment
2025

Name of Property

Lawrence, South Dakota

County and State

66000716

NR Reference Number

794 Main (LA00101267)

1894

Contributing (Garage Contributing)

Gabled with returns. Brick. 1/1s.

795 Main (LA00101338)

1935

Contributing

Spanish Mission influences on old service station. Stucco. Two garage bays infilled with windows and stucco.

799 Main (LA00101257)

1950

Noncontributing (Garage Noncontributing)

Gabled with gabled entrance. Wide siding.

800 Main (LA00101336)

1935

Contributing

Side gabled with gabled porch. Wood clapboard. 3/1 windows.

801 Main (LA00100012) (Gold Country Inn)

1993

Noncontributing

Motel. Six side gabled volumes. Faux board-and-batten siding.

802 Main (LA00101330)

1936

Contributing

One story. Gabled with shed roof addition. Wood clapboard. Decorative woodwork in gable.

804 Main (LA00101332)

1930

Contributing

Gabled. Wood siding. 3/1 windows on façade. Decorative woodwork in gable.

806 Main (LA00101333)

1930

Contributing

Gabled. Wood siding. 3/1 windows on façade. Decorative woodwork in gable.

**United States Department of the Interior
National Park Service****National Register of Historic Places
Continuation Sheet**

Deadwood Historic District Amendment 2025
Name of Property Lawrence, South Dakota
County and State 66000716
NR Reference Number

817.5 Main (LA00100014)
1946

Noncontributing

Two story building with considerable setback. Flat roof and fixed-pane windows. Masonite possibly on second story; possibly T-11 siding on first.

818 Main (LA00101335)
1930/50

Noncontributing

Altered. Spanish Colonial Revival stylings. Stucco.

817-21 Main (LA00101334)
1930

Contributing

One story. Main hipped volume with small gabled volumes with clipped gables. Wood siding. 3/1s/. Each of three volumes has its own address 817, 819, and 821. Likely apartments.

820 Main (LA00101347)
1930

Contributing

Gabled with enclosed gabled porch. Stucco. 4/1s and fixed panes.

822 Main (LA00101337)
1930

Noncontributing (Garage Noncontributing)

Gabled with large gabled addition on façade. Deck on side elevation.

824 Main (LA00101328)
1905

Contributing

Enclosed porch. Hipped and gabled volumes. Wood clapboard. Cottage windows. 3/1 on porch.

825 Main (LA00101339)
1930

Contributing (Garage Contributing)

Side gabled with entrance gable. Multi-pane windows. Iron railing on stoop.

827 Main (LA00101340) (Grace Lutheran Church)
1920

Noncontributing

Altered. Side gabled. Steeple. Gabled additions.

**United States Department of the Interior
National Park Service****National Register of Historic Places
Continuation Sheet**Deadwood Historic District Amendment
2025

Name of Property

Lawrence, South Dakota

County and State

66000716

NR Reference Number

830 Main (LA00101341)

1905

Noncontributing (Garage Noncontributing)

Altered Queen Anne form. Faux board-and-batten on second story. Addition over porch. Replacement windows.

834 Main (LA00101230)

1936

Contributing (Garage Contributing)

Gable and wing form. Stucco. 6/1s. Gabled entrance volume.

838 Main (LA00101231)

1930

Contributing (Garage Contributing)

Dutch Colonial. Multi-pane windows. Wood siding.

839 Main (LA00101233)

1900

Contributing

Cube form with addition. Pyramidal roof. Wood siding. Small porch with spindlework.

842 Main (LA00101234)

1990

Noncontributing

Split-level. Shed addition on façade.

846 Main (LA00101247)

1890

Contributing

Symmetrical. Classical columns. Gabled dormers with fishscales. Multi-pane over 1s. Wood siding.

847 Main (LA00101237)

1925

Contributing

Side gabled. Wood siding. 6/6s. Shed roof over entry. Brackets in gables.

849 Main (LA00101228)

1923

Contributing (Garage Contributing)

Hipped cottage. Gable in roof. Wood siding. Primarily 1/1s. New wood deck.

**United States Department of the Interior
National Park Service****National Register of Historic Places
Continuation Sheet**Deadwood Historic District Amendment
2025Name of Property
Lawrence, South DakotaCounty and State
66000716

NR Reference Number

850 Main (LA00101239)

1895

Contributing (Noncontributing Garage)

Two-story. Enclosed porches with classical columns. Central dormer.

860 Main (LA00101241)

1933

Contributing

Gable and wing form. Wide siding. 4/1s and 1/1s.

861 Main (LA00101242)

1963

Noncontributing

Ranch. Wood and stone veneer. Hipped roof. 1/1s and fixed.

865 Main (LA00101243)

1966

Noncontributing

Modern gable and wing form. Garage over gable.

866 Main (LA00101266)

1950

Noncontributing (Garage Noncontributing)

867 Main (LA00100155)

1955

Noncontributing

Side gabled ranch with attached garage. Paired and tripled 1/1s. Faux board-and-batten and some brick veneer.

870 Main (LA00101244)

1934

Contributing

Side gabled with gabled entrance. Stucco. 6/1s.

872 Main (LA00101236)

1935

Contributing (Garage Contributing)

Tudor Revival stylings. Stucco. 6/1s. Stucco and some stone veneer.

**United States Department of the Interior
National Park Service****National Register of Historic Places
Continuation Sheet**Deadwood Historic District Amendment
2025Name of Property
Lawrence, South DakotaCounty and State
66000716

NR Reference Number

874 Main (LA00101246)

1900

Contributing

Two story. Gable and wing form. Classical porch columns. Wood siding. Ornate window surrounds.

875 Main (LA00100156)

1976

Noncontributing (Garage Noncontributing)

Three side gabled volumes. Metal roof. Wide siding, some brick veneer. 6/6s.

878 Main (LA00101238)

1936

Contributing

Tudor Revival. Two story. Stone and stucco veneer. Faux thatched roof appearance. Multi-pane windows.

880 Main (LA00101224)

1939

Noncontributing (Garage Noncontributing)

Two gabled volumes; one has brackets. Vertical wood siding. Variety of windows.

890 Main (LA00101216)

1895

Contributing

Two story. Wood clapboard. Two-story deck with wood balustrade. Off-center entrance door with transom.

900 Main (LA00101227)

1937

Noncontributing (Garage Noncontributing)

Side gabled with a gabled volume. Wood siding.

906 Main (LA00101223)

1895

Contributing (Garage Contributing)

Two story. Wood clapboard. Hipped roof. Two-story wraparound porch with classical columns. Original windows. Bays on first story.

908 Main (LA00101220)

1937

Contributing

Side gabled main volume with gabled volumes on the façade. Porch enclosed. Windows mix of historic/replacement. Wide siding.

**United States Department of the Interior
National Park Service****National Register of Historic Places
Continuation Sheet**

Deadwood Historic District Amendment 2025
Name of Property Lawrence, South Dakota
County and State 66000716
NR Reference Number

McGovern Hill Road

106 McGovern Hill Road (LA00100015)

c.1990s

Noncontributing

This house is modern side gable house on a raised concrete foundation. Has a large redwood deck. The 1930s house originally located here is non extant.

110 McGovern Hill Road (LA00100016)

1937

Contributing

Gabled house with porch enclosure (likely historic). Shed roof addition on rear corner. Wood siding and primarily 1/1 windows. Small shed roof porch at entrance.

112 McGovern Hill Road (LA00100012)

1935

Noncontributing

Originally side gable. Large gable addition on façade. Rear addition. Vertical wood siding. Central door, Chicgo style window and 1/1s.

114 McGovern Hill Road (LA00100018)

1900

Noncontributing (Garage Noncontributing)

Multiple additions/alterations. Two story built down the hill. Hipped roof with gabled dormer. Gabled entrance addition and two shed roof additions. Fixed-pane/slider windows. Wide siding, possibly Masonite. Shed roof garage with Masonite siding.

214 McGovern Hill Road (LA00100020)

1940

Noncontributing (Garage Noncontributing)

One story. Gable and wing with asphalt shingles. New wood stained siding. 4/4 windows. Modern wood deck.

300 McGovern Hill Road (LA00100021)

1930

Noncontributing

Two story gable front with asphalt shingles. Replacement siding. 1/1 windows. Modern wood deck centered on façade.

United States Department of the Interior
National Park Service

National Register of Historic Places
Continuation Sheet

Deadwood Historic District Amendment 2025
Name of Property Lawrence, South Dakota
County and State 66000716
NR Reference Number

306 McGovern Hill Road (LA00100022)

1936

Noncontributing

Side gable with a large gable addition on the façade and another gable addition on side elevation. Wide siding and asphalt shingles. Large modern windows on façade and modern door. Modern wood deck.

308 McGovern Hill Road (LA00100023)

1940

Noncontributing

Several including a large gable addition on façade. Mix of windows. Wide cedar siding. Modern wood deck.

McKinley Street

18 McKinley (LA00100130)

1990

Noncontributing

Two story. L-shaped apartments. Brick veneer.

20 McKinley (LA00101259)

1932

Noncontributing (Garage Noncontributing)

Side gabled volume with flanking gabled volumes. Stone veneer on side gabled volume. Stucco.

23 McKinley (LA00100143)

1940

Noncontributing (Garage Noncontributing)

Side gabled with gabled entrance with brackets. Replacement siding and faux multi-pane windows. Car port.

23.5 McKinley (LA00100144)

1925

Contributing (Garage Contributing)

Two story. 3/1s. Metal roof. Gabled entrance volume. Wood siding.

24 McKinley (LA00101261)

1935

Noncontributing

Gabled with attached garage. Brackets in gable. Wide siding and vertical siding. Gabled entry volume.

**United States Department of the Interior
National Park Service****National Register of Historic Places
Continuation Sheet**Deadwood Historic District Amendment
2025

Name of Property

Lawrence, South Dakota

County and State

66000716

NR Reference Number

25 McKinley (LA00101263)

1938

Noncontributing

Hipped roof. 3/1s. (Garage Noncontributing)

26 McKinley (LA00101262)

1940

Noncontributing

Side gabled. Small deck.

27 McKinley (LA00101264)

1960

Noncontributing (Garage Noncontributing)

Side gabled with gabled entrance.

28 McKinley (LA00101266)

1935

Contributing (Garage Contributing)

Side gabled form with gabled entrance volume. Multi-pane/1 windows.

29 McKinley (LA00101265)

1933

Noncontributing

Form modified with additions. Stucco.

Monroe Street

12 Monroe (LA00101538)

1900

Noncontributing

Two story. Hipped roof. Enclosed wraparound porch.

23 Monroe (LA00101491)

1895

Noncontributing

Gable and wing form. Two-story porch. Wide siding. Shed roofed entry volume.

Park Street

16 Park (LA00101494)

1895

Contributing (Garage Noncontributing)

Front gabled with gable over porch. Replacement siding. 1/1s.

**United States Department of the Interior
National Park Service****National Register of Historic Places
Continuation Sheet**Deadwood Historic District Amendment
2025Name of Property
Lawrence, South DakotaCounty and State
66000716

NR Reference Number

17 Park (LA00101492)

1900

Noncontributing

Front gabled. Addition flush with façade. 1/1s. Wood siding.

Pearl Street

4 Pearl (LA00101496)

1935

Noncontributing

Wide siding. Vertical siding in gables. Variety of windows.

Pine Street

10 Pine Street (LA00101498) (Hudson-Terraplane)

1935

Contributing

Two story. Brick. 3/1s second story.

Pleasant Street

18 Pleasant (LA00101791)

1895

Contributing

Partially enclosed porch. Wood siding. Gabled.

20 Pleasant (LA00101791)

Noncontributing

Modern. Cedar siding. Cedar deck.

51 Pleasant (LA00101499)

1895

Contributing (Garage Noncontributing)

Two story gable and wing form. Addition rear. Shed roof porch in ell.

52 Pleasant (LA00101887)

1978

Noncontributing

58 Pleasant (LA00101902)

1900

Contributing

**United States Department of the Interior
National Park Service****National Register of Historic Places
Continuation Sheet**Deadwood Historic District Amendment
2025Name of Property
Lawrence, South DakotaCounty and State
66000716

NR Reference Number

170 Pleasant (LA001019010)
1895
Contributing (Garage Contributing)

Railroad Avenue

1 Railroad (LA00101906)
1920
Noncontributing
Heavily modified. Three gabled volumes with gabled garage connected by a hyphen. Window size and organization not consistent with 1920s.

41 Railroad (LA00100151)
1976
Noncontributing
Two story with attached garage. Gabled. Gabled entrance. Metal roof.

Raymond Street

18 Raymond (LA00101507)
1878
Contributing
Side gabled. 6/1s. Shed roofed dormer.

24 Raymond (LA00101508)
1880
Noncontributing
Large, two-story new deck on façade.

Rodenhaus Avenue

3 Rodenhaus (LA00101511)
1900
Noncontributing
Cube form. Modified. New deck.

4 Rodenhaus (LA00101511)
1920
Contributing (Garage Noncontributing)
Cube form. Wood siding and stucco. Porch enclosed. Historic addition.

United States Department of the Interior
National Park Service**National Register of Historic Places**
Continuation SheetDeadwood Historic District Amendment
2025

Name of Property

Lawrence, South Dakota

County and State

66000716

NR Reference Number

7 Rodenhaus (LA00100051)

1900

Contributing

Cube form. Hipped roof with asphalt shingles. 1/1 windows. Wood siding. Stone foundation.

9 Rodenhaus (LA00100052)

1950

Noncontributing (Garage Noncontributing)

Small. Side gabled. Wide siding. Mostly 1/1s. Dormer. Wood deck.

Rodeo Street

3 Rodeo (LA00100146)

1975

Noncontributing

Side gable with a gabled garage on front. Wide siding.

5 Rodeo (LA00100147)

1977

Noncontributing (Garage Noncontributing)

Split-level. Wide siding and brick veneer. Metal roof.

10 Rodeo (LA00100148)

1975

Noncontributing (Garage noncontributing)

Side gabled. Brick veneer. Wide chimney. Variety of windows.

Sampson Street

2 Sampson (LA00100127)

1930

Noncontributing (Noncontributing Outbuilding)

Gabled with gabled addition on façade. Variety of windows.

4 Sampson (LA00100142)

1930

Noncontributing (Garage Noncontributing)

Side gabled with gabled entry. Wide siding. Variety of windows. Wood deck.

5 Sampson (LA00101478)

1932

Noncontributing

Side gabled. Garage addition. Possible bay window addition.

**United States Department of the Interior
National Park Service****National Register of Historic Places
Continuation Sheet**Deadwood Historic District Amendment
2025Name of Property
Lawrence, South DakotaCounty and State
66000716

NR Reference Number

6 Sampson (LA00100140)

1950

Noncontributing (Garage Noncontributing)

Gable and wing ranch form. Wide siding. Variety of wood windows. Wood decks.

7 Sampson (LA0010117)

c.2000

Noncontributing

Modern log house. Side gabled.

9 Sampson (or 8?) (LA00101512)

2000

Noncontributing

Modern. Side gabled. Wood deck.

10 Sampson (LA00100118)

1979

Noncontributing

Ranch. Side gabled with shed roof porch. Attached garage. Vertical wood siding. Variety of windows.

31 Sampson (or 27?) (LA00100119)

1980

Noncontributing (Garage Noncontributing)

Side gabled. Wood access ramp.

35 Sampson (LA00100121)

1900

Contributing

Side gabled. Wood siding. Metal roof. Large addition on rear. Some windows replaced/downsized.

39 Sampson (LA00100123)

1920

Contributing

Small sided gabled. Pediment over door. Replacement door/windows.

Seiver Street

3 Seiver (LA00101564) (Depot)

1897/03

Contributing

**United States Department of the Interior
National Park Service****National Register of Historic Places
Continuation Sheet**Deadwood Historic District Amendment
2025

Name of Property

Lawrence, South Dakota

County and State

66000716

NR Reference Number

Selbie Avenue

17 Selbie (LA00101503)

1887

Noncontributing (Garage Noncontributing)
Modified.**Sherman Street**

37 Sherman

1912

Contributing

51 Sherman Street (Adams)

1897-1903

Contributing

54 Sherman (LA00101474) (Adams Museum)

1929-30

Contributing

Eclectic - Twentieth Century Classical Revival movement.

57 Sherman (LA00100001)

1903

Contributing

One story brick commercial building with flat roof. Multi-pane windows, one with operational mid-section. Entrance boarded (2022).

65 Sherman (LA00101475)

1920

Commercial

Two story. Dark brick. Commercial. 3/1s second story. Small-lite transoms first story.

68 Sherman (LA00101477) Post Office and Courthouse

1907

Contributing

Neoclassical. Central volume protrudes; four Tuscan columns support a dentilated pediment that includes a clock. Classical styled parapet.

69 Sherman (LA00101466) (AB Trucano Company)

1880/1909-19

Contributing

Brick. 1/1s and 6/6s. Brick arched lintels.

United States Department of the Interior
National Park Service**National Register of Historic Places**
Continuation SheetDeadwood Historic District Amendment
2025

Name of Property

Lawrence, South Dakota

County and State

66000716

NR Reference Number

78 Sherman (LA00101480) (Lawrence County Courthouse)
1907
Contributing

79 Sherman (LA00101481) (J Hattenbach and Bros Building)
1895
Contributing
Sandstone. Ornate cornice.

83 Sherman (LA00101484)
1944
Noncontributing
One story. Stucco. Modern fenestration.

87 Sherman (LA00101485)
1964
Noncontributing
Two story. Stone veneer. Ribbon windows.

89 Sherman (LA00101486)
1939
Contributing
Two story. Brick. Subtle New Deal Art Deco stylings. Recessed volume has two garage doors with row of windows above.

90 Sherman (LA00101479)
Post 1950
Noncontributing and Noncontributing
Modern buildings – Lawrence County Public Safety Complex and Administrative Offices.

93 Sherman (LA00101487)
1880/1928
Contributing
Tudor Revival styled commercial building.

95 Sherman (LA00101883)
Noncontributing
Stucco gas station. Canopy.

105 Sherman (LA00101516)
1912, 2010
Contributing
Recreation Center, addition in 2010.

**United States Department of the Interior
National Park Service****National Register of Historic Places
Continuation Sheet**Deadwood Historic District Amendment
2025

Name of Property

Lawrence, South Dakota

County and State

66000716

NR Reference Number

108 Sherman

1936

Contributing

110 Sherman (LA00101662) (First Baptist Church)

1916-17

Contributing

124 Sherman (LA00101513)

1962

Noncontributing

Midcentury grocery store.

136 Sherman (LA00101542) (Pioneer Transfer and Storage)

1941

Noncontributing

Brick. Openings infilled with modern fenestration.

138 Sherman (LA00101543)

1898

Contributing

Two story. False front. Wood siding. Shares façade with 140 Sherman.

140 Sherman (LA00101544)

1898

Contributing

Two story. False front. Wood siding. Shares façade with 138 Sherman.

142 Sherman (LA00101545) (Deadwood Grain and Marble Works)

1910

Contributing

False front. Wood siding. Paired doors with 4-lite over 2-panel on façade. 6/6s on other elevations.

155 Sherman (LA00101546)

1936

Contributing

One story. Stucco. Cutaway corner entrance. Replacement fenestration.

175 Sherman (LA00101553)

1939

Contributing

Service station. Stucco.

**United States Department of the Interior
National Park Service****National Register of Historic Places
Continuation Sheet**Deadwood Historic District Amendment
2025

Name of Property

Lawrence, South Dakota

County and State

66000716

NR Reference Number

Shine Street

3 Shine (LA00101548)

1895

Contributing

Two story. Painted brick. Arched lintels. Hipped roof with gabled volume.

8 Shine (LA00101550)

1903

Contributing

Two story. Brick. Arched lintels. Ornate porch.

9 Shine (LA00101550)

1895

Contributing

Two story. Painted brick. Hipped roof with gabled volume.

Spring Street

2 Spring (LA00100124)

1978

Noncontributing

Side gabled. Wide siding. 1/1s. Wood deck.

7 Spring (LA00100125)

1988

Noncontributing

Gabled. Log construction. Two-story. Large deck. Variety of windows.

11 Spring

2015

Noncontributing

16 Spring (LA00100129)

1900

Noncontributing

Cube form with multiple additions. Variety of windows.

Stewart Street

3 Stewart (LA00101558)

1900

Contributing

United States Department of the Interior
National Park Service**National Register of Historic Places**
Continuation SheetDeadwood Historic District Amendment
2025

Name of Property

Lawrence, South Dakota

County and State

66000716

NR Reference Number

Hipped roof. Two story tower. Wood siding. Diamond shingles. Variety of historic windows. Porch enclosed with 10-pane windows.

5 Stewart (LA00101559)

1900

Contributing

Two story. Symmetrical. Paired 6/1s. Pedimented entrance porch with classical columns.

7 Stewart (LA00101560)

1900

Contributing

Two story. Wood siding. Box bay window with 1/1s and diamond shingles. Mansard-type roof over entrance.

15 Stewart (LA00101561)

1950

Noncontributing (Garage Noncontributing)

Two story. Gabled.

27 Stewart (LA00101563)

1905

Contributing

Two story. Queen Anne.

33 Stewart (LA00101528)

1900

Contributing

Two story. Transitional Queen Anne/Colonial. Dormer with Palladian window. Classical porch columns.

39 Stewart (LA00101526)

1897

Contributing

Wide, bungalow form. Hipped roof with dormers. Wraparound porch. Cottage window.

43 Stewart (LA00101551)

1935

Contributing

Side gabled. 6/6s.

**United States Department of the Interior
National Park Service****National Register of Historic Places
Continuation Sheet**Deadwood Historic District Amendment
2025Name of Property
Lawrence, South DakotaCounty and State
66000716

NR Reference Number

59 Stewart (LA00101519)

1894

Contributing

Side gabled with front facing gable. Wood siding. Decorative porch, pediment over entry.

63 Stewart (LA00101520)

1894

Contributing

Eclectic. Three gabled dormers. Wood siding. Square porch columns and balusters. 1/1s.

67 Stewart (LA00101517)

1897

Contributing

Side gabled with two-story gabled bay. Wood siding. 1/1s. Decorative porch.

71 Stewart (LA00101521)

1895

Contributing (Garage Contributing)

Gable and wing form. Hipped roof deck enclosure in ell. Wood siding.

75 Stewart (LA00101522)

1890

Noncontributing

Hipped roof with shed roofed porch enclosure. Replacement windows and siding.

77 Stewart (LA00101523)

1897

Contributing

Prominent front gable. Faux board-and-batten in gable. 1/1s. Decorative stone/concrete retaining wall.

79 Stewart (LA00101524)

1885

Contributing (Garage Contributing)

Small. Side gabled. Enclosed porch. 1/1s.

81 Stewart (LA00101525)

1890

Contributing (Garage Contributing)

Side gabled with prominent front gable with small second-story porch. Wood siding; fishscales in gables.

**United States Department of the Interior
National Park Service****National Register of Historic Places
Continuation Sheet**Deadwood Historic District Amendment
2025

Name of Property

Lawrence, South Dakota

County and State

66000716

NR Reference Number

85 Stewart (LA00101539)

1910

Contributing (Garage Contributing)

Two story. Gabled. Hipped roof porch with entry pediment. Palladian window in gable.

89 Stewart (LA00101515)

1977

Noncontributing

Split-level. Deck on second story.

95 Stewart (LA00101529)

1890

Noncontributing

Heavily modified. Multiple roof line. Replacement materials.

Taylor Avenue

21 Taylor (LA00101531)

1889

Contributing

25 Taylor (LA00101532)

1900

Contributing

Side gabled. 1/1s.

28 Taylor (LA00101533)

1890

Contributing (Outbuilding Noncontributing)

Pyramidal roof. Wood siding. 1/1s.

31 Taylor (LA00101534)

1898

Contributing

Gabled roof.

33 Taylor (LA00100017)

1890

Contributing

Cube form with asphalt shingles. Wood siding. 1/1 windows. Slightly off center door. Stone retaining wall with concrete below. Metal railing above.

**United States Department of the Interior
National Park Service****National Register of Historic Places
Continuation Sheet**Deadwood Historic District Amendment
2025

Name of Property

Lawrence, South Dakota

County and State

66000716

NR Reference Number

41 Taylor (LA00101536)

1935

Contributing

Side gabled with gabled volume on façade. Stucco. 1/1s.

44 Taylor (LA00101537)

1894

Contributing (Garage Contributing)

Two story. Hipped roof. 1/1s. Wood siding. Porch with tapered columns and kneewall.

45 Taylor (LA00101464)

1905

Contributing

Two story. Hipped roof. Ornate porch stylings. 1/1s. Wood siding.

48 Taylor (LA00101399)

1900

Contributing (Garage Contributing)

Gabled. Shed-roofed addition. Wood siding.

51 Taylor (LA00101551)

1890

Noncontributing

Modified.

52 Taylor (LA00101476)

1944

Noncontributing

Side gabled. Altered.

53 Taylor (LA00101767)

1890

Contributing

Enclosed porch. 3/1s. Rear addition.

55 Taylor (LA00100055)

1890

Contributing

Two-story. Gabled roof with asphalt shingles. Gabled dormer. Enclosed porch wraps around. Wood siding. 1/1s.

**United States Department of the Interior
National Park Service****National Register of Historic Places
Continuation Sheet**Deadwood Historic District Amendment
2025

Name of Property

Lawrence, South Dakota

County and State

66000716

NR Reference Number

57 Taylor (LA00101394)

1890

Noncontributing

Two story. Multi-pane windows. Appears modified.

61 Taylor (LA00101395)

1944

Noncontributing (Garage Contributing)

Gabled with gabled entrance. Shingle-like treatment in gables. Wood siding; brick and stone veneers.

62 Taylor (LA00100025)

1900

Contributing

Queen Anne. Replacement siding. 1/1 and QA windows. Gable with asphalt shingles. Porch with shed roof.

63 Taylor (LA00101396)

1900

Contributing

Two story. Cross-gabled. Hipped roof porch with square columns. Cottage window. 1/1s.

65 Taylor (LA00101397)

1898

Contributing

Two story. Wood siding. Shed-roofed dormer. Entrance enclosed with windows. Modern bay window.

66 Taylor (LA00101400)

1941

Noncontributing (Garage Contributing)

Side gabled with gabled entry volume. 3/1s.

67 Taylor (LA00101398)

1905

Contributing

Two story. Hipped roof. Hipped roof porch. Exposed rafters. Diamond window second story.

Terrace Street

25 Terrace (LA00101416)

Contributing

Gable and wing form. Stucco.

**United States Department of the Interior
National Park Service****National Register of Historic Places
Continuation Sheet**Deadwood Historic District Amendment
2025

Name of Property

Lawrence, South Dakota

County and State

66000716

NR Reference Number

29 Terrace (LA00101402)

1895

Contributing

Two story. Gable and wing form. Turned columns/balustrades on porch in ell. Cottage window.

33 Terrace (LA00101404)

1895

Contributing

39 Terrace (LA0010043)

1895

Contributing

49 Terrace (LA00101392)

1895

Contributing

Two story. Stucco. Enclose porch. Modified, but modifications likely within POS.

58 Terrace (LA00101406)

1895

Noncontributing.

Strange gable structure with incorporated car port. Handicap ramp.

65 Terrace (LA00101408)

1896

Contributing

1½ story. Gable front. Half-width porch partially enclosed. Wood siding. 1/1s.

67 Terrace (LA00100041)

1900

Contributing

Two story gable and wing form. Wood clapboard. 1/1 windows with wood surrounds. Sunburst pattern in gable.

Van Buren Avenue

6 Van Buren (LA00101409)

1880

Contributing

1½ story. Gabled front. Hipped roof wraparound porch with tapered columns. Paired 1/1s in gable.

**United States Department of the Interior
National Park Service****National Register of Historic Places
Continuation Sheet**Deadwood Historic District Amendment
2025Name of Property
Lawrence, South DakotaCounty and State
66000716

NR Reference Number

8 Van Buren (LA00100003)

1896

Contributing

Queen Anne. Prominent two-story bay window. 1/1 windows. Wood clapboard and shingle siding. Small entrance porch with detailing.

10 Van Buren (LA00101410)

1896

Contributing

Queen Anne. Two story bay window. Wood clapboard and fishscale shingles. Hipped roof porch with tapered columns.

1-11 Van Buren (LA00100053)

1903

Contributing

Apartments. Three story. Brick. Decorative upper sashes in all windows. Decorative brick lintels and stone sills.

14 Van Buren (LA00101411)

1920

Contributing

Side gabled. Stucco. Exposed rafter tails. 9/1s.

22 Van Buren (LA00101380) (Adams House Museum)

1892

Contributing

Adams House Museum.

23 Van Buren (LA00101405)

1880

Contributing

Two story. Three sided bay window. Two story porch on one half of façade.

28 Van Buren (LA00101403)

1952

Noncontributing

Midcentury. Brick veneer.

29 Van Buren (LA00101369)

1880

Contributing (Noncontributing)

Two story, gable and wing form. Shed roof porch. 1/1s.

**United States Department of the Interior
National Park Service****National Register of Historic Places
Continuation Sheet**Deadwood Historic District Amendment
2025Name of Property
Lawrence, South DakotaCounty and State
66000716

NR Reference Number

34 Van Buren (LA00101370)

1895

Contributing

One story. Gable and wing form. Addition in ell.

38 Van Buren (LA00101371)

1897

Contributing (Noncontributing)

Two story. Gable and wing form. Three sided bay window. Classical columns on porch.

39 Van Buren (LA00101372)

1885

Contributing

One story. Gable and Wing form. Three-sided bay window on façade. Addition on rear.

50 Van Buren (LA00101373)

1879

Contributing (Noncontributing)

Two story. Gable and wing form. Three sided-bay window with ornate woodwork. Porch in ell enclosed.

51 Van Buren (LA00101374)

1885

Contributing

Two story. Ornate. Transitional Queen Anne. Wood siding, some diamond shingles. Two story ornate bay windows.

52 Van Buren (LA00101374)

1935

Contributing

One story. Gabled front with brackets in eaves. Pediment over door. New wood deck.

57 Van Buren (LA00101376)

1890

Contributing

Stone foundation. Gabled front.

59 Van Buren (LA00100056)

1936

Contributing

Craftsman with addition. Wood siding. 5/1 windows. Brackets in eaves. Large porch.

**United States Department of the Interior
National Park Service****National Register of Historic Places
Continuation Sheet**Deadwood Historic District Amendment
2025Name of Property
Lawrence, South DakotaCounty and State
66000716

NR Reference Number

74 Van Buren (LA00101391)
1925
Contributing
Gable and wing form.

84 Van Buren (LA00101379)
1925
Noncontributing (Noncontributing)
Log cabin with gabled entrance and metal roof. Side gabled. Appears new or heavily modified.

Wabash Avenue

9 Wabash (LA00101381)
1898
Contributing
Two story. Gable front. Shed roofed porch. Wood siding. 1.1s.

36 Wabash (LA00100008)
1900
Noncontributing
Altered with additions. May have been a cube form originally; now hipped with metal roof. Siding appears to be wood, windows primarily 1/1. Paired multi-pane doors on basement.

42 Wabash (LA00100009)
1930
Contributing
Two story, appears one story from front. Gabled roof with gabled addition, both clad in asphalt shingles. Wood siding. 1/1 and multi-pane windows; many paired. New stoop on front with modern stone cladding.

46 Wabash (LA0010035)
1985
Noncontributing
Modern small vacation home. Gable roof. Centered sliding doors on façade.

Washington Street

4 Washington (LA00101382)
1952
Noncontributing
Hipped roof Ranch with brick veneer.

**United States Department of the Interior
National Park Service****National Register of Historic Places
Continuation Sheet**Deadwood Historic District Amendment
2025Name of Property
Lawrence, South DakotaCounty and State
66000716

NR Reference Number

9 Washington (LA00101383)

1910

Contributing

Two story. Gabled front. Narrow and wide siding. Classical porch columns.

12 Washington (LA00101384)

1898

Contributing

Two story. Stucco. Pyramidal roof. Gabled entrance volume.

15 Washington (LA00101385)

1905

Contributing (Garage Contributing)

Two story. Two story porch enclosed. Pediment over entrance. Wood siding.

16 Washington (LA00101386)

1888

Contributing

Side gabled, addition rear. Gabled entrance volume.

18 Washington (LA001000??)

1900

Contributing

Cube form. Cedar siding. 1/1 windows. Stone foundation. Small modern entrance deck.

20 Washington (LA001000??)

1909

Noncontributing

Queen Anne. Ornate two-level porch. Cottage and QA windows.

26 Washington (LA00101388)

1890

Contributing (Noncontributing Carport)

Two story. Gabled front. Hipped roof porch with turned columns/balustrade.

34 Washington (LA00101389)

ca.1939

Contributing

Pyramidal roof. Round entry volume. Simple Modern styling. Stucco.

**United States Department of the Interior
National Park Service****National Register of Historic Places
Continuation Sheet**Deadwood Historic District Amendment
2025

Name of Property

Lawrence, South Dakota

County and State

66000716

NR Reference Number

37 Washington (LA00101378)

1939

Contributing

One story. Stucco. Chimney centered on façade. Hipped roof.

38 Washington (LA00101427)

1955

Noncontributing

Modern split level. Wide siding. 1/1s.

39 Washington (LA00100058)

1939

Contributing

Side gabled with saltbox entry volume. Paired 6/1s on façade. Wood siding.

41 Washington (LA00100059)

1938

Contributing

Side gabled with a gabled entry volume. 6/1s. Wood siding.

42 Washington (LA00100060)

1980

Noncontributing

Modern. Side gabled. Large deck with parking beneath.

44 Washington (LA00100415)

1900

Contributing

Queen Anne. Wood clapboard. Fishscales and QA windows in gables. Mainly 1/1s. Porch on two elevations. Pediments in porch roofs over entrances.

58 Washington (LA00101443)

1895

Contributing

Hipped roof. Wood siding. Hipped roof porch with knee wall. 1/1s.

Water Street

8 Water (or 6-10) (LA00101446)

1900

Noncontributing

Side gabled. Appears modified.

**United States Department of the Interior
National Park Service****National Register of Historic Places
Continuation Sheet**Deadwood Historic District Amendment
2025

Name of Property

Lawrence, South Dakota

County and State

66000716

NR Reference Number

22 Water (LA00101447)

1890

Contributing

Hipped roofs. Dormers. Wood siding.

26 Water (LA00101488)

1890

Contributing (Garage Noncontributing)

Cross gabled. Wood siding. Dormers. 1/1s.

36 Water (LA00101449)

1902

Contributing (Garage Noncontributing)

Two story. Gabled form with wing addition. Three-sided bay window on façade.

Williams Street

62 Williams (LA00101465)

1950

Noncontributing

Gabled and side gabled volume. Stucco.

78 Williams (LA00101760)

1890

Contributing (Garage Noncontributing)

Gabled addition on front.

90 Williams (LA00101453)

1935

Contributing

97 Williams (LA00101441)

1890

Contributing

Gable front. Ornate porch. Cottage window. 1/1s.

99 Williams (LA00101840)

1890

Contributing

Front gabled. Porch enclosed.

**United States Department of the Interior
National Park Service****National Register of Historic Places
Continuation Sheet**Deadwood Historic District Amendment
2025

Name of Property

Lawrence, South Dakota

County and State

66000716

NR Reference Number

111 Williams (LA00100159)

1910

Noncontributing

Heavily modified cube form. Faux board-and-batten siding. Dormer. Replacement windows.

125 Williams (LA00101455)

1966

Noncontributing

Split level. CMU basement level.

128 Williams (LA00100153)

1939

Noncontributing

Modified. Cedar rustic-look siding. Gable and wing form. Gable over entrance. Gables have returns.
Garage underneath gable.

132 Williams (LA00100128)

1939

Contributing

Side gable with gabled entry volume. Original fenestration and wood siding.

158 Williams (LA00101456)

1895

Contributing

Foursquare form. Paired 1/1s on façade. Shed roof porch with center pediment.

227 Williams (LA00101458)

1890

Noncontributing

Modified, additions.

284 Williams (LA00101459)

1885

Contributing

Side gabled. Partial porch enclosure. Side addition.

288 Williams (LA00101460)

1885

Contributing (Garage Noncontributing)

Cross gabled. Stucco. Two story deck.

**United States Department of the Interior
National Park Service****National Register of Historic Places
Continuation Sheet**Deadwood Historic District Amendment
2025Name of Property
Lawrence, South DakotaCounty and State
66000716

NR Reference Number

291 Williams (LA00101461)

1895

Noncontributing

Gable and wing form. Heavily modified with replacement materials.

296 Williams (LA00101463)

1935

Contributing (Garage Contributing)

Gabled. Stucco. Bank of three windows in front facing gable.

298 Williams (LA00101429)

1890

Contributing

Queen Anne. Wood siding, fishscales in gables. Porch with tapered columns.

299 Williams (LA00101454)

1892

Contributing

Mansard roof. Wood shingles. Gabled dormers. 4/1s.

308 Williams (LA00101452)

1902

Contributing

Two story. Porch partially enclosed. Windows in gable have Queen Anne in upper sash.

316 Williams (LA00101418)

1880

Contributing

Two story. Gabled front. Porch. Stucco. Paired 2/1s in gable.

318 Williams (LA00101419)

1890

Contributing

Gable and wing form. Wood siding. 1/1s. Shed roof porch in ell.

320 Williams (LA00101467)

1902

Contributing

Front gabled. Three-sided window bay. Fixed six-panes in gable.

**United States Department of the Interior
National Park Service****National Register of Historic Places
Continuation Sheet**Deadwood Historic District Amendment
2025Name of Property
Lawrence, South DakotaCounty and State
66000716

NR Reference Number

322 Williams (LA00101420)

1895/1950

Noncontributing

Stucco. Two volumes separated by a hyphen. Likely modified outside POS. Paired decks, one covered.

326 Williams (LA00101421)

1935

Contributing (Garage Contributing)

Gable and wing form. Wide siding. 6/6s.

330 Williams (LA00101422)

1897

Contributing (Garage Contributing)

Gabled with clipped gable. 3/1s. 1/1 in gable. Porch with kneewall.

334 Williams (LA00101423)

1880

Contributing

Gable and wing form. Wood siding. Ornate three sided window bay on front facing gable.

336 Williams (LA00101424)

1880

Contributing

Two story gable and wing form. Front facing gable is a two-story, three sided window bay. Entry porch enclosed with windows.

340 Williams (LA00101425)

1934

Contributing

Sided gabled with gabled entry volume. Stucco. Paired 3/1s, large picture window on façade.

342 Williams (LA00101426)

1880

Noncontributing

Heavily modified gable and wing form. Cedar siding in multiple configurations.

346 Williams (LA00101440)

1935

Contributing

Clipped gable. Wood porch. Gable over entrance.

**United States Department of the Interior
National Park Service****National Register of Historic Places
Continuation Sheet**Deadwood Historic District Amendment
2025Name of Property
Lawrence, South DakotaCounty and State
66000716

NR Reference Number

350 Williams (LA00101428)

1880

Contributing

Mansard roof. Arched windows. Rectangular bay on façade. Wood siding.

358 Williams (LA00101417)

1892

Contributing

Modified, but appears changes occurred in POS. Gabled front. Wood siding. Multi-pane windows.

360 Williams (LA00101430)

1880

Contributing

1½ story. Gable and wing form. Ornate three sided bay window on façade. Gabled entry volume.

366 Williams (LA00101431)

1905

Contributing

Two story. Hipped roofs. Gabled roof over porch. Wood siding and fishscale shingles in gable.
Turned balusters.

370 Williams (LA00101432)

1880/95

Contributing

Two story. Square form. Wood siding, fishscales below roof. Enclosed porch wood balustrade on
second story.

374 Williams (LA00101433)

1880

Contributing

Mansard roof with dormers. Ornate bumpout bay. Gabled entrance volume. Wood siding.

378 Williams (LA00101434)

1880

Contributing (Garage Noncontributing)

Gabled front with partially enclosed porch. New deck above porch. Three sided bay window on side
elevation. Multi-pane windows.

382 Williams (LA00101390)

1891

Contributing

Queen Anne form. Two story tower. Pop out bays. Modified arched entrance. Wide and narrow
siding.

**United States Department of the Interior
National Park Service****National Register of Historic Places
Continuation Sheet**Deadwood Historic District Amendment
2025

Name of Property

Lawrence, South Dakota

County and State

66000716

NR Reference Number

386 Williams (LA00101436)

1880

Contributing

Gabled front. Stucco. Porch with kneewall and small deck above.

388 Williams (LA00101873)

1880

Noncontributing

Modified.

390 Williams (LA00101438)

1880

Contributing

1½ story gable and wing form. Three-sided ornate bay window on façade. 1/1 in gable.

395 Williams (LA00101439)

1932

Contributing

False front and gabled volumes. Wood siding. 4/1s. 1/1s.

396 Williams (LA00101663)

1880

Contributing (Garage Contributing)

Two story. Wide siding. Three-story bay window. 1/1s.

401 Williams (LA00101907) (Episcopal church)

1880

Contributing

402 Williams (LA00101884)

1876

Contributing

Stucco. Gable and wing form.

404 Williams (LA00101906)

1900

Contributing

Three stories.

405 Williams (LA00101908) (Episcopal Rectory)

1938

Contributing

Stucco. Tudor rival.

**United States Department of the Interior
National Park Service****National Register of Historic Places
Continuation Sheet**Deadwood Historic District Amendment
2025

Name of Property

Lawrence, South Dakota

County and State

66000716

NR Reference Number

408 Williams (LA00101900)

1880/1922

Contributing (Garage Contributing)

Front gabled. Stucco. Lancet windows. Old church.

415 Williams (LA00101897)

1897

Contributing

House duplex.

416 Williams (LA00101885)

1880

Contributing

Front gabled. Porch enclosed with multi-panes.

422 Williams (LA00101895)

1898

Contributing (Garage Contributing)

Two story. Wood siding and shingles. Porch enclosed.

424 Williams (LA00101893)

1937

Noncontributing

Modified.

435 Williams (LA00101892)

1910

Contributing

Carnegie Library.

442 Williams (LA00101891)

1890

Contributing

Mansard roof. 2.5 story. 2/2s.

444-448 Williams (LA00101890)

1936

Contributing

Apartments. Two story. 4/1s.

**United States Department of the Interior
National Park Service****National Register of Historic Places
Continuation Sheet**Deadwood Historic District Amendment
2025

Name of Property

Lawrence, South Dakota

County and State

66000716

NR Reference Number

458 Williams (LA00101889)

1925

Contributing

Craftsman. Half porch enclosed. 3/1s.

462 Williams (LA00101888)

1909

Contributing (Garage Contributing)

2 story.

476 Williams (LA00101886)

1895

Contributing

512 Williams (LA00101894)

1928

Noncontributing (Garage contributing)

562 Williams (LA00101896)

1900

Noncontributing.

580 Williams (LA00101904)

1900

Noncontributing

592 Williams (LA00101903)

1895

Noncontributing.

United States Department of the Interior
National Park Service**National Register of Historic Places**
Continuation SheetDeadwood Historic District Amendment
2025

Name of Property

Lawrence, South Dakota

County and State

66000716

NR Reference Number

10. Geographical Data**Acreage of Property** approx. 600

Use either the UTM system or latitude/longitude coordinates

Latitude/Longitude Coordinates

Datum if other than WGS84: _____

(enter coordinates to 6 decimal places)

- | | |
|--------------|------------|
| 1. Latitude: | Longitude: |
| 2. Latitude: | Longitude: |
| 3. Latitude: | Longitude: |
| 4. Latitude: | Longitude: |

Or**UTM References**

Datum (indicated on USGS map):

☐ NAD 1927 or ☒ NAD 1983

- | | | |
|-------------|--------------------|----------------------|
| 1. Zone: 13 | Easting: 602262.21 | Northing: 4916391.36 |
| 2. Zone: 13 | Easting: 603297.17 | Northing: 4915297.15 |
| 3. Zone: 13 | Easting: 601265.96 | Northing: 4913206.83 |
| 4. Zone: 13 | Easting : 600837.6 | Northing: 4913618.39 |
| 5. Zone: 13 | Easting: 600800.56 | Northing: 4913488.08 |
| 6. Zone: 13 | Easting: 600729.12 | Northing: 4913484.11 |
| 7. Zone: 13 | Easting: 600625.93 | Northing: 4913406.72 |
| 8. Zone: 13 | Easting: 599844.35 | Northing: 4914434.63 |

United States Department of the Interior
National Park Service**National Register of Historic Places**
Continuation Sheet

Deadwood Historic District Amendment 2025
Name of Property Lawrence, South Dakota
County and State 66000716
NR Reference Number

Verbal Boundary Description (Describe the boundaries of the property.)

The boundary is the city limits of Deadwood as detailed in the 1976 National Register of Historic Places Inventory Form.

Boundary Justification (Explain why the boundaries were selected.)

The boundary includes properties included within the 1976 National Register of Historic Places Inventory Form. This 2025 amendment does not change the original boundary. More precise UTM points that correlate with the city limits were used. Additionally, two UTM's were added at the southwest corner of the property to best reflect the city limits boundary and route the boundary through the public right of way. As interpreted, the boundary was neither increased nor decreased.

Photographs

Submit clear and descriptive photographs. The size of each image must be 1600x1200 pixels (minimum), 3000x2000 preferred, at 300 ppi (pixels per inch) or larger. Key all photographs to the sketch map. Each photograph must be numbered and that number must correspond to the photograph number on the photo log. For simplicity, the name of the photographer, photo date, etc. may be listed once on the photograph log and doesn't need to be labeled on every photograph.

Photo Log

Name of Property: Deadwood Historic District

City or Vicinity: Deadwood

County: Lawrence

State: SD

Photographer: KLG Engineering

Date Photographed: August 2022

Description of Photograph(s) and number, include description of view indicating direction of camera:

Please see Continuation Sheets

United States Department of the Interior
National Park Service

National Register of Historic Places
Continuation Sheet

Deadwood Historic District Amendment
2025

Name of Property

Lawrence, South Dakota

County and State

66000716

NR Reference Number



SD_LawrenceCounty_DeadwoodHistoricDistrictAmendment2024_0001. 1-11 Van Buren.



United States Department of the Interior
National Park Service

**National Register of Historic Places
Continuation Sheet**

Deadwood Historic District Amendment
2025

Name of Property

Lawrence, South Dakota

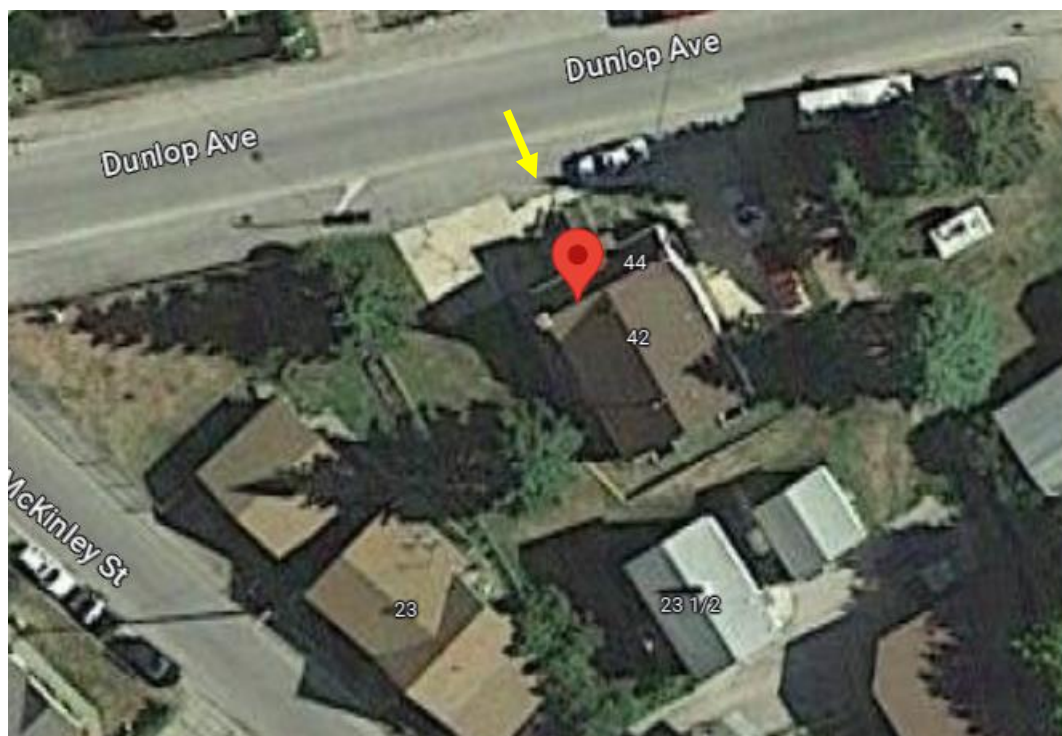
County and State

66000716

NR Reference Number



SD_LawrenceCounty_DeadwoodHistoricDistrictAmendment2024_0002. 42-44 Dunlop.



United States Department of the Interior
National Park Service

National Register of Historic Places
Continuation Sheet

Deadwood Historic District Amendment
2025

Name of Property

Lawrence, South Dakota

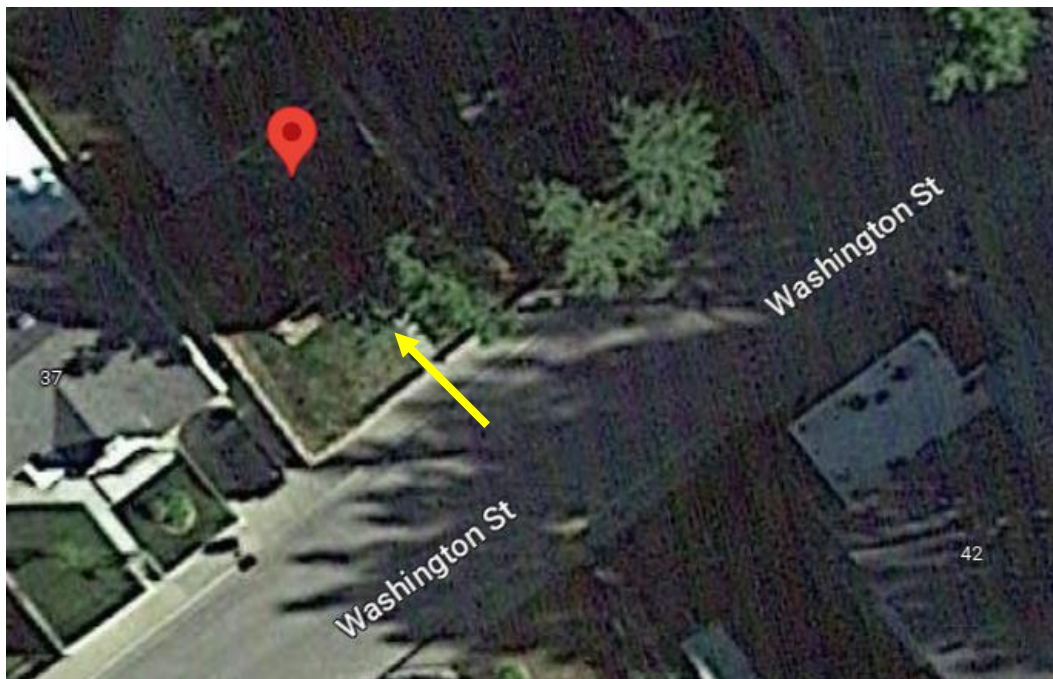
County and State

66000716

NR Reference Number



SD_LawrenceCounty_DeadwoodHistoricDistrictAmendment2024_0003. 39 Washington.



United States Department of the Interior
National Park Service

**National Register of Historic Places
Continuation Sheet**

Deadwood Historic District Amendment
2025

Name of Property

Lawrence, South Dakota

County and State

66000716

NR Reference Number



SD_LawrenceCounty_DeadwoodHistoricDistrictAmendment2024_0004. 906 Main Street.



United States Department of the Interior
National Park Service

National Register of Historic Places
Continuation Sheet

Deadwood Historic District Amendment
2025

Name of Property

Lawrence, South Dakota

County and State

66000716

NR Reference Number



SD_LawrenceCounty_DeadwoodHistoricDistrictAmendment2024_0005. 770 Main Street.



United States Department of the Interior
National Park Service

National Register of Historic Places Continuation Sheet

Deadwood Historic District Amendment
2025

Name of Property

Lawrence, South Dakota

County and State

66000716

NR Reference Number



SD_LawrenceCounty_DeadwoodHistoricDistrictAmendment2024_0006. 664 Main Street.



United States Department of the Interior
National Park Service

National Register of Historic Places
Continuation Sheet

Deadwood Historic District Amendment
2025

Name of Property

Lawrence, South Dakota

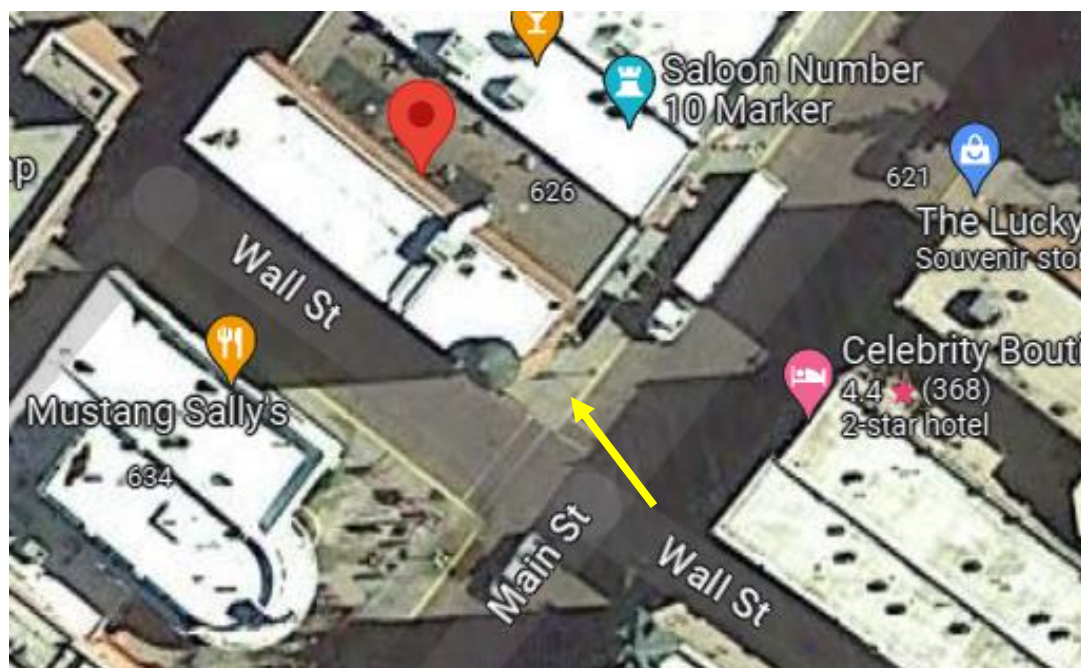
County and State

66000716

NR Reference Number



SD_LawrenceCounty_DeadwoodHistoricDistrictAmendment2024_0007. 628 Main Street.



United States Department of the Interior
National Park Service

National Register of Historic Places Continuation Sheet

Deadwood Historic District Amendment
2025

Name of Property

Lawrence, South Dakota

County and State

66000716

NR Reference Number



SD_LawrenceCounty_DeadwoodHistoricDistrictAmendment2024_0008. 677 Main Street.



United States Department of the Interior
National Park Service

National Register of Historic Places Continuation Sheet

Deadwood Historic District Amendment
2025

Name of Property

Lawrence, South Dakota

County and State

66000716

NR Reference Number



SD_LawrenceCounty_DeadwoodHistoricDistrictAmendment2024_0009. 633 Main Street.



United States Department of the Interior
National Park Service

National Register of Historic Places
Continuation Sheet

Deadwood Historic District Amendment
2025

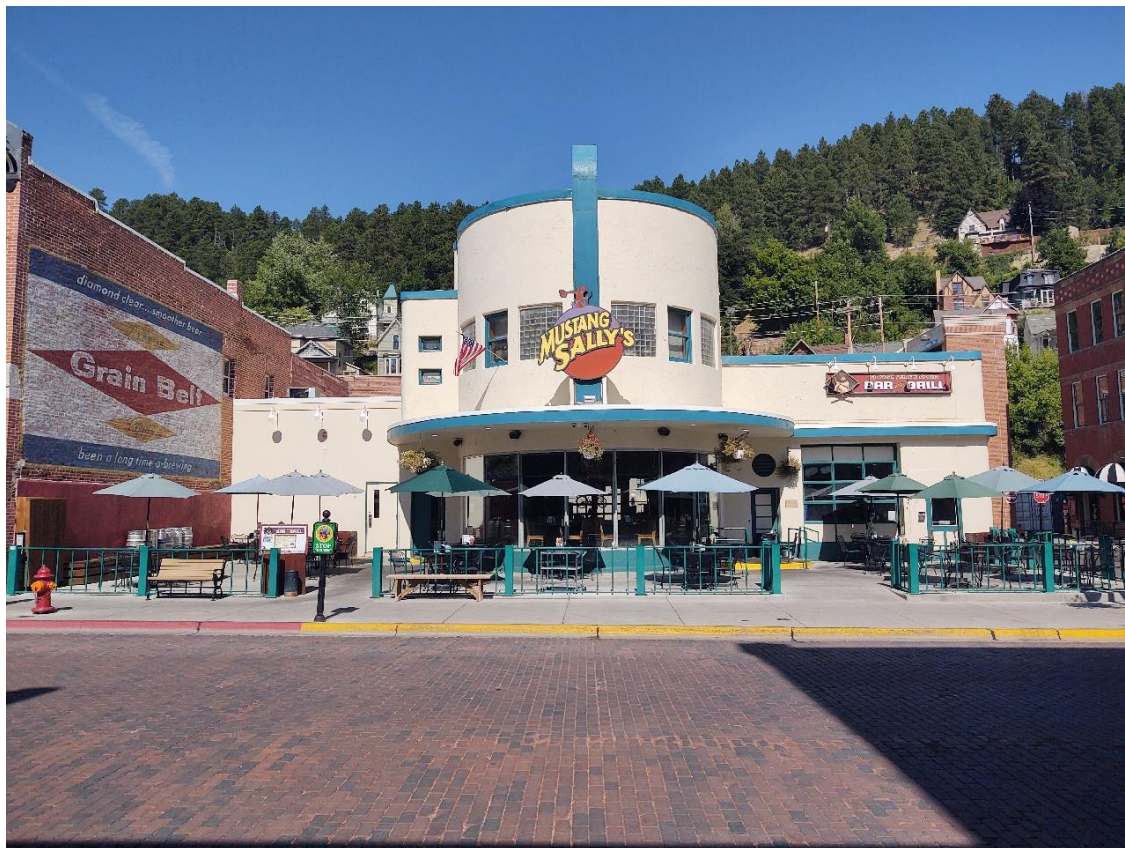
Name of Property

Lawrence, South Dakota

County and State

66000716

NR Reference Number



SD_LawrenceCounty_DeadwoodHistoricDistrictAmendment2024_0010. 630 Main Street.



United States Department of the Interior
National Park Service

**National Register of Historic Places
Continuation Sheet**

Deadwood Historic District Amendment
2025

Name of Property

Lawrence, South Dakota

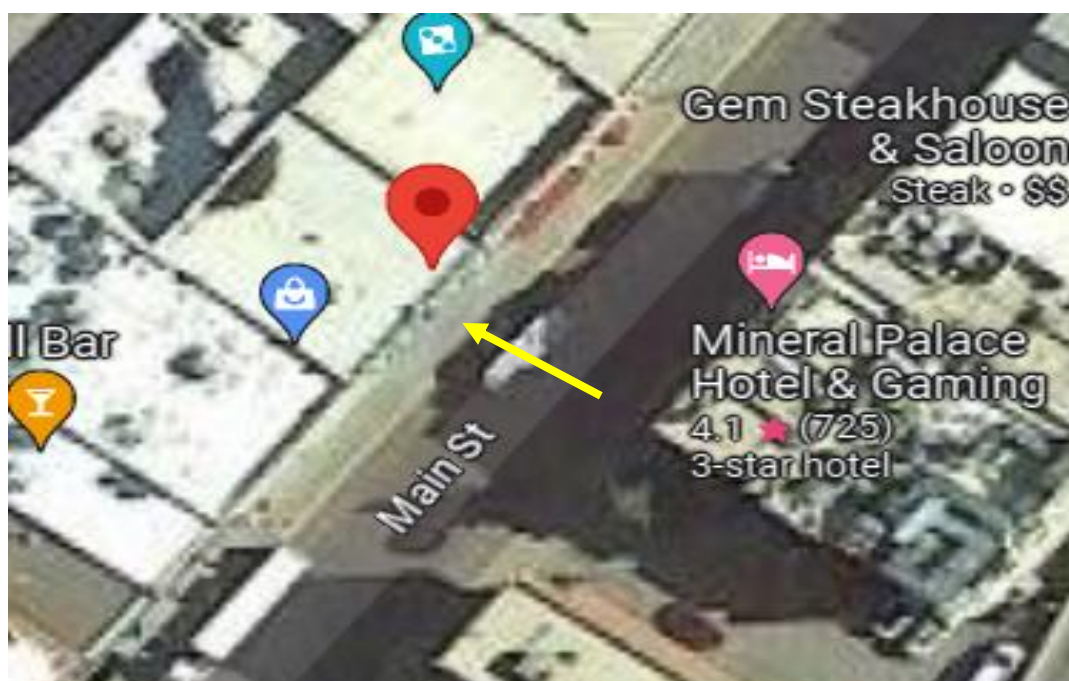
County and State

66000716

NR Reference Number



SD_LawrenceCounty_DeadwoodHistoricDistrictAmendment2024_0011. 616 Main Street.



United States Department of the Interior
National Park Service

National Register of Historic Places
Continuation Sheet

Deadwood Historic District Amendment
2025

Name of Property

Lawrence, South Dakota

County and State

66000716

NR Reference Number



SD_LawrenceCounty_DeadwoodHistoricDistrictAmendment2024_0012. 715 Main Street.



United States Department of the Interior
National Park Service

**National Register of Historic Places
Continuation Sheet**

Deadwood Historic District Amendment
2025

Name of Property

Lawrence, South Dakota

County and State

66000716

NR Reference Number



SD_LawrenceCounty_DeadwoodHistoricDistrictAmendment2024_0013. 50 Van Buren Street.



United States Department of the Interior
National Park Service

National Register of Historic Places
Continuation Sheet

Deadwood Historic District Amendment
2025

Name of Property

Lawrence, South Dakota

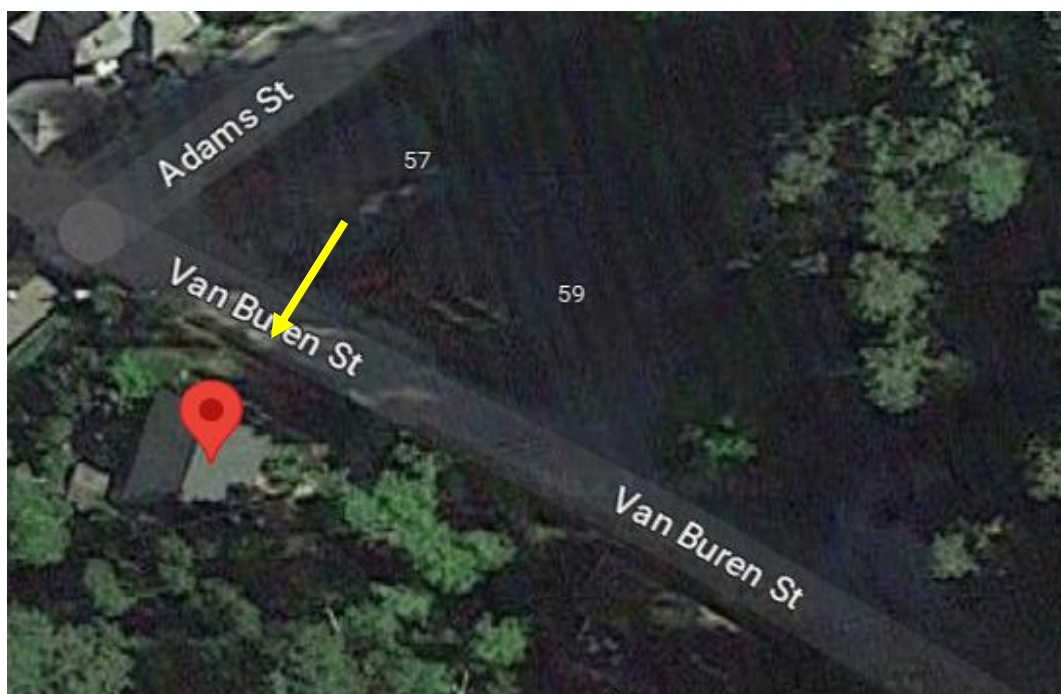
County and State

66000716

NR Reference Number



SD_LawrenceCounty_DeadwoodHistoricDistrictAmendment2024_0014. 52 Van Buren Street.



United States Department of the Interior
National Park Service

National Register of Historic Places
Continuation Sheet

Deadwood Historic District Amendment
2025

Name of Property

Lawrence, South Dakota

County and State

66000716

NR Reference Number



SD_LawrenceCounty_DeadwoodHistoricDistrictAmendment2024_0015. 22 Van Buren Street.



United States Department of the Interior
National Park Service

National Register of Historic Places
Continuation Sheet

Deadwood Historic District Amendment
2025

Name of Property

Lawrence, South Dakota

County and State

66000716

NR Reference Number



SD_LawrenceCounty_DeadwoodHistoricDistrictAmendment2024_0016. 382 Williams Street.



United States Department of the Interior
National Park Service

**National Register of Historic Places
Continuation Sheet**

Deadwood Historic District Amendment
2025

Name of Property

Lawrence, South Dakota

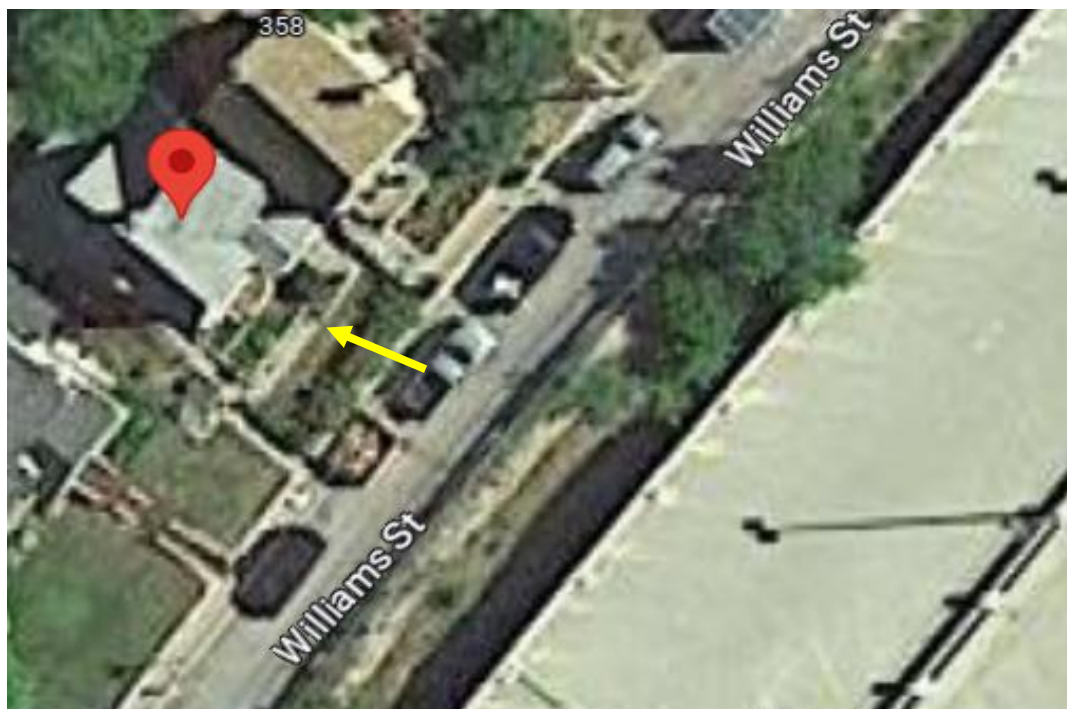
County and State

66000716

NR Reference Number



SD_LawrenceCounty_DeadwoodHistoricDistrictAmendment2024_0017. 360 Williams Street.



United States Department of the Interior
National Park Service

National Register of Historic Places
Continuation Sheet

Deadwood Historic District Amendment
2025

Name of Property

Lawrence, South Dakota

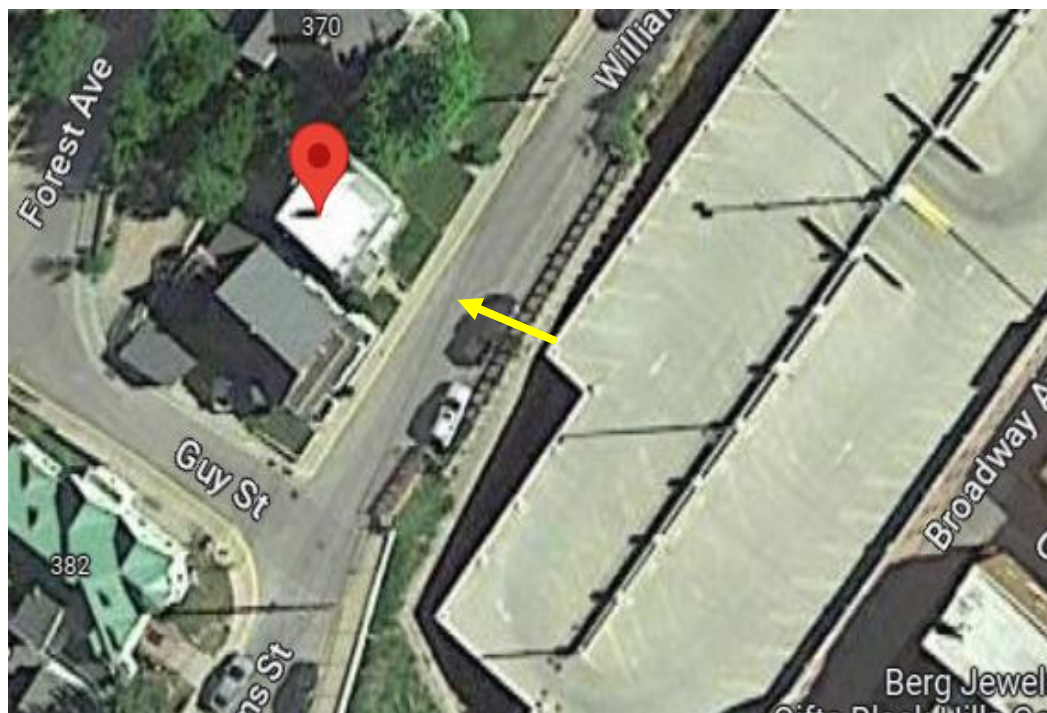
County and State

66000716

NR Reference Number



SD_LawrenceCounty_DeadwoodHistoricDistrictAmendment2024_0018. 374 Williams Street.



United States Department of the Interior
National Park Service

National Register of Historic Places
Continuation Sheet

Deadwood Historic District Amendment
2025

Name of Property

Lawrence, South Dakota

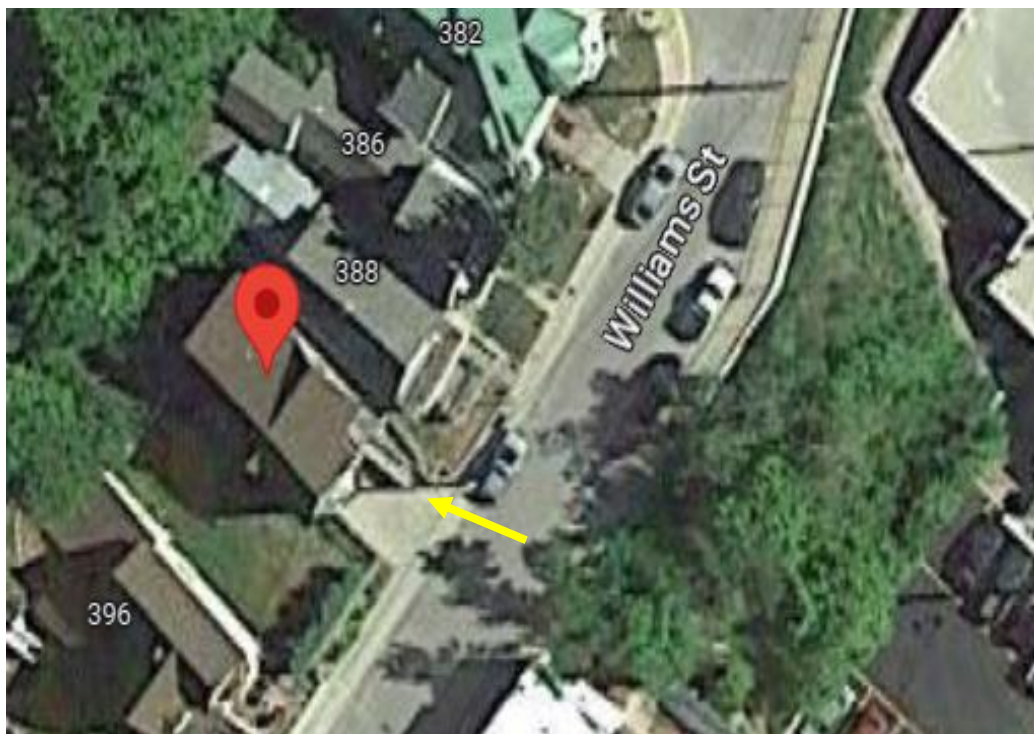
County and State

66000716

NR Reference Number



SD_LawrenceCounty_DeadwoodHistoricDistrictAmendment2024_0019. 390 Williams Street.



United States Department of the Interior
National Park Service

National Register of Historic Places
Continuation Sheet

Deadwood Historic District Amendment
2025

Name of Property

Lawrence, South Dakota

County and State

66000716

NR Reference Number



SD_LawrenceCounty_DeadwoodHistoricDistrictAmendment2024_0020. 10 Pine Street.



United States Department of the Interior
National Park Service

National Register of Historic Places
Continuation Sheet

Deadwood Historic District Amendment
2025

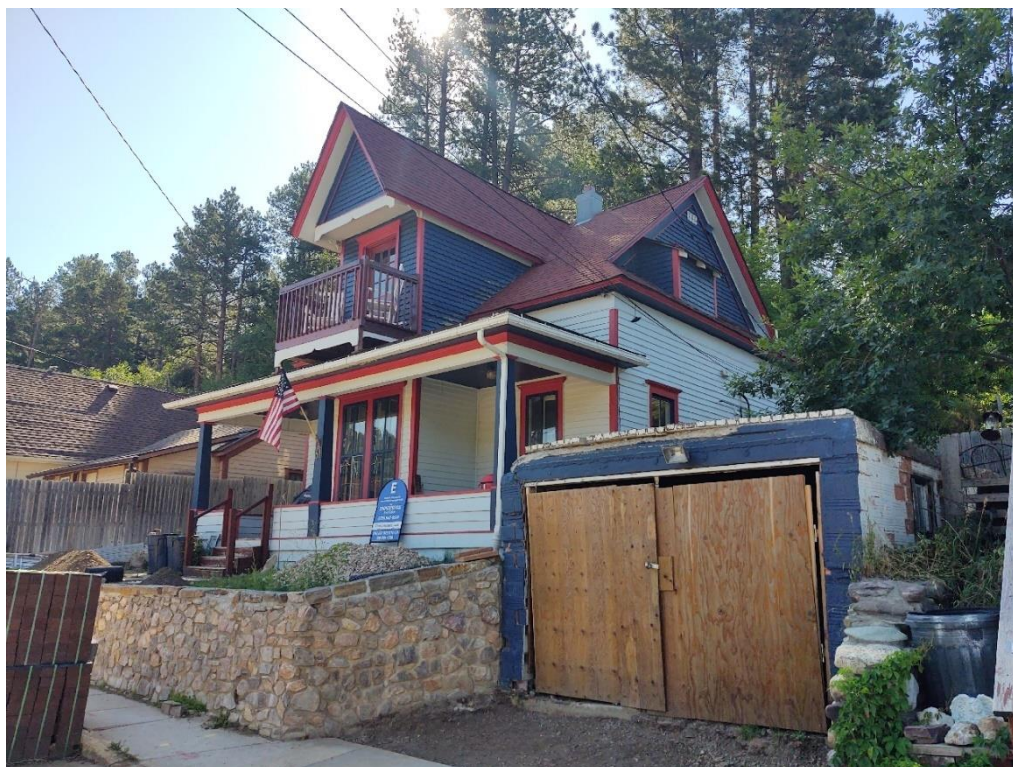
Name of Property

Lawrence, South Dakota

County and State

66000716

NR Reference Number



SD_LawrenceCounty_DeadwoodHistoricDistrictAmendment2024_0021. 81 Stewart Street.



United States Department of the Interior
National Park Service

National Register of Historic Places
Continuation Sheet

Deadwood Historic District Amendment
2025

Name of Property

Lawrence, South Dakota

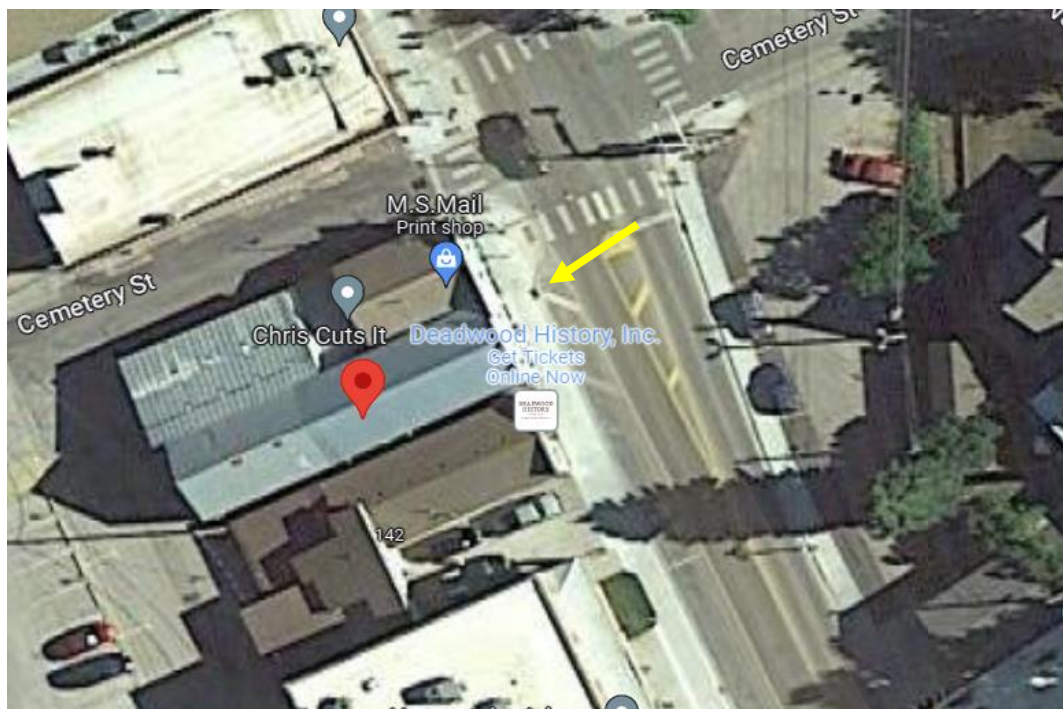
County and State

66000716

NR Reference Number



SD_LawrenceCounty_DeadwoodHistoricDistrictAmendment2024_0022. 140 Sherman Street.



United States Department of the Interior
National Park Service

**National Register of Historic Places
Continuation Sheet**

Deadwood Historic District Amendment
2025

Name of Property

Lawrence, South Dakota

County and State

66000716

NR Reference Number



SD_LawrenceCounty_DeadwoodHistoricDistrictAmendment2024_0023. 3 Shine Street.



United States Department of the Interior
National Park Service

National Register of Historic Places
Continuation Sheet

Deadwood Historic District Amendment
2025

Name of Property

Lawrence, South Dakota

County and State

66000716

NR Reference Number



SD_LawrenceCounty_DeadwoodHistoricDistrictAmendment2024_0024. 7 Stewart Street.



United States Department of the Interior
National Park Service

**National Register of Historic Places
Continuation Sheet**

Deadwood Historic District Amendment
2025

Name of Property

Lawrence, South Dakota

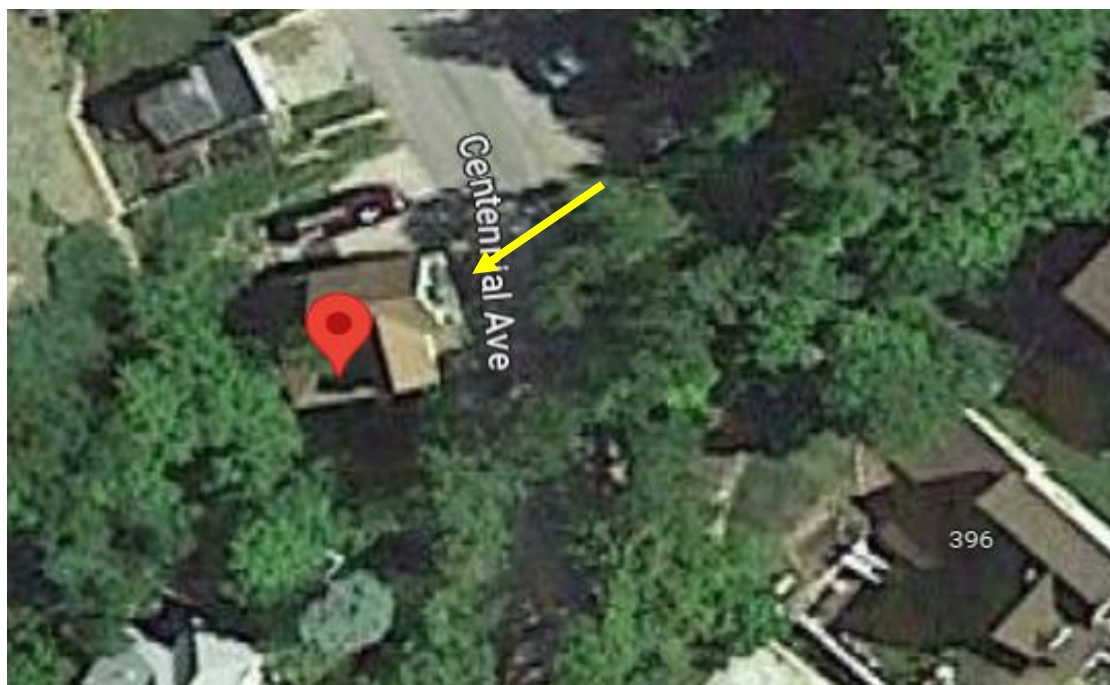
County and State

66000716

NR Reference Number



SD_LawrenceCounty_DeadwoodHistoricDistrictAmendment2024_0025. 31 Centennial Street.



United States Department of the Interior
National Park Service

National Register of Historic Places
Continuation Sheet

Deadwood Historic District Amendment
2025

Name of Property

Lawrence, South Dakota

County and State

66000716

NR Reference Number



SD_LawrenceCounty_DeadwoodHistoricDistrictAmendment2024_0026. 5 Charles Street.



United States Department of the Interior
National Park Service

National Register of Historic Places
Continuation Sheet

Deadwood Historic District Amendment
2025

Name of Property

Lawrence, South Dakota

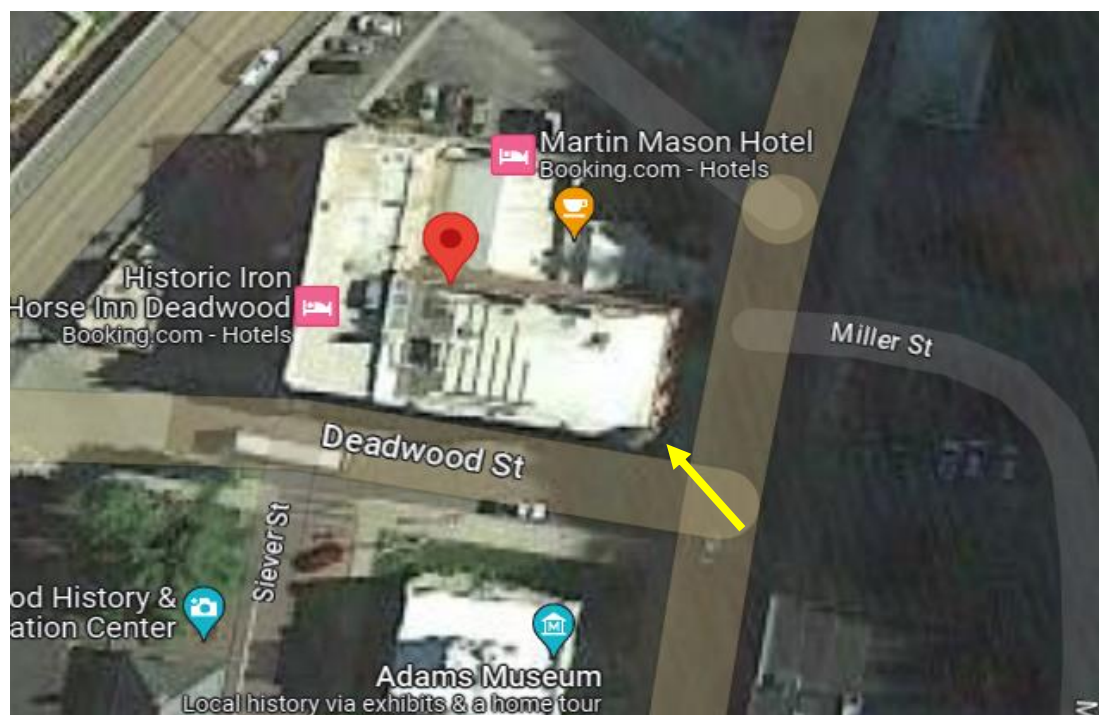
County and State

66000716

NR Reference Number



SD_LawrenceCounty_DeadwoodHistoricDistrictAmendment2024_0027. 27 Deadwood Street.



United States Department of the Interior
National Park Service

National Register of Historic Places
Continuation Sheet

Deadwood Historic District Amendment
2025

Name of Property

Lawrence, South Dakota

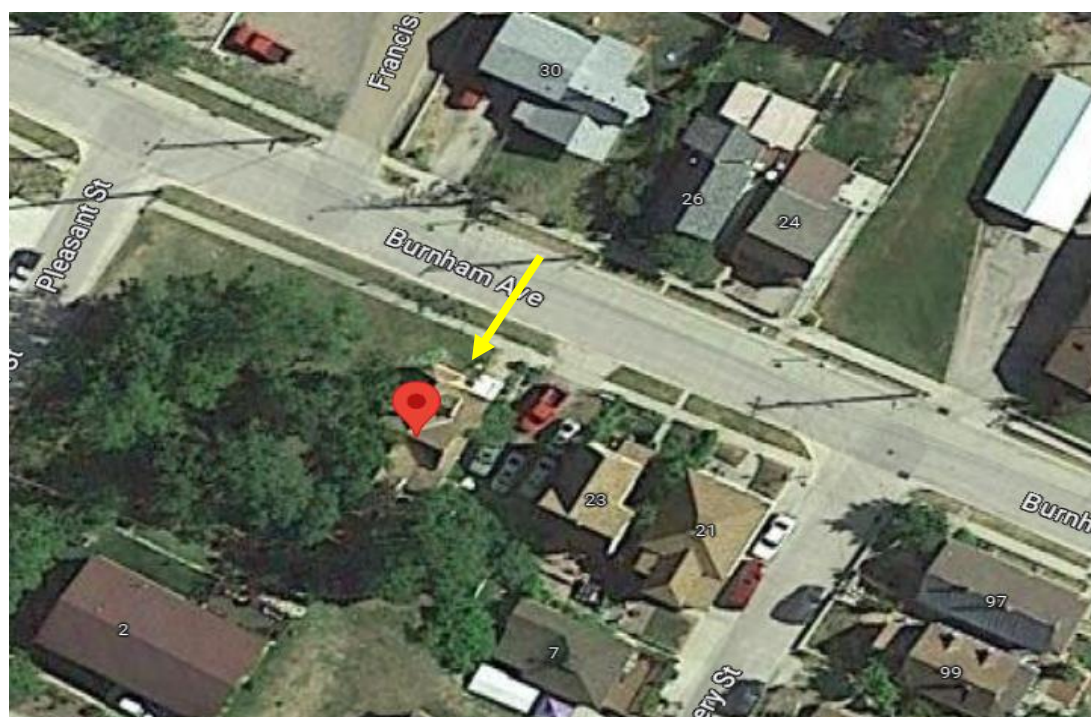
County and State

66000716

NR Reference Number



SD_LawrenceCounty_DeadwoodHistoricDistrictAmendment2024_0028. 31 Burnham Avenue.



United States Department of the Interior
National Park Service

**National Register of Historic Places
Continuation Sheet**

Deadwood Historic District Amendment
2025

Name of Property

Lawrence, South Dakota

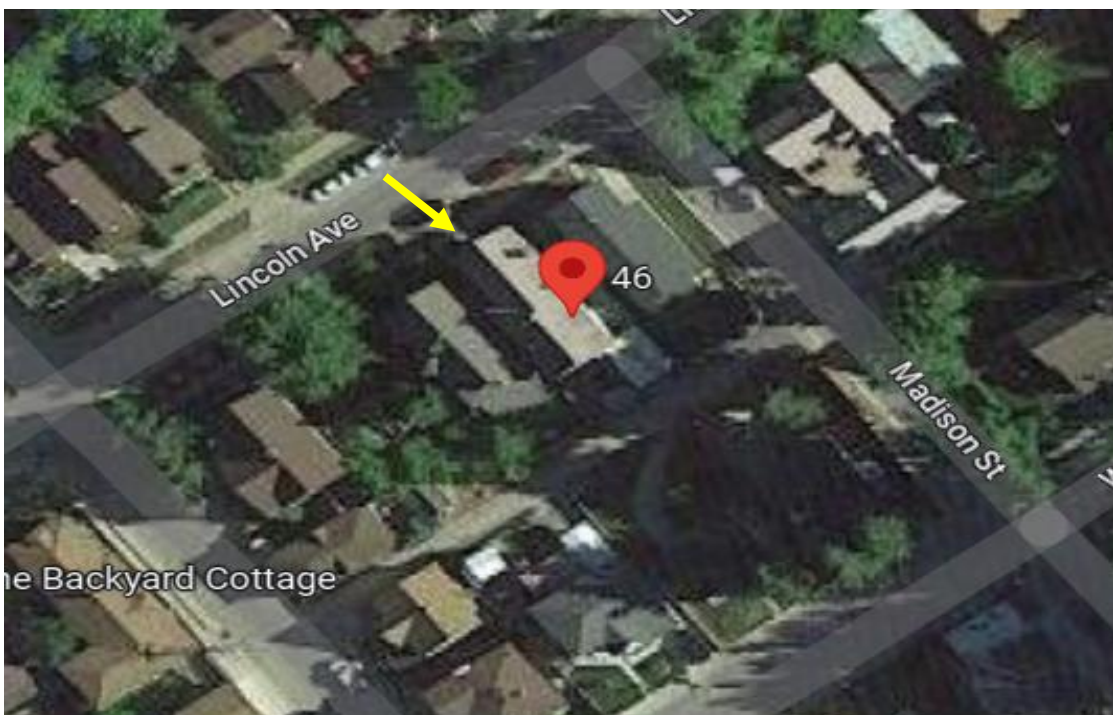
County and State

66000716

NR Reference Number



SD_LawrenceCounty_DeadwoodHistoricDistrictAmendment2024_0029. 44-46 Lincoln Street.



United States Department of the Interior
National Park Service

**National Register of Historic Places
Continuation Sheet**

Deadwood Historic District Amendment
2025

Name of Property

Lawrence, South Dakota

County and State

66000716

NR Reference Number



SD_LawrenceCounty_DeadwoodHistoricDistrictAmendment2024_0030. 442 Williams Street.

