

DISTRICT AMENDMENT

STATUS CHANGE FOR 29 STRUCTURES

CONTRIBUTING TO NON-CONTRIBUTING

**Deadwood National Historic Landmark District
Historic District Amendment – Deadwood Historic Preservation Review and Comment
Contributing to Non-Contributing Structures**

130 Charles (LA00101601)

c.1938

Noncontributing (Garage Noncontributing)

Modified.

Structure:

1993 survey garage listed as non-contributing, house listed as contributing

2008 survey lists both structures as contributing

2012 Repaired windows & installed wood storm windows to replace inappropriate metal storm windows.

Inappropriate siding replaced with cement board, 5" reveal

Participated in loan program.

Staff Comment:

Staff disagree and believe it should be considered as contributing.



**Deadwood National Historic Landmark District
Historic District Amendment – Deadwood Historic Preservation Review and Comment
Contributing to Non-Contributing Structures**

12 Dakota (LA00101616)

c.1900

Noncontributing

Cube. Heavily modified.

House:

The exterior siding is modern, most windows are non-historic, and there is a non-historic two-story rear addition. Because of these changes, the building has lost integrity and cannot currently contribute.

2016 Remove inappropriate siding to reverse portions of the house which has caused the resource to lose its historic integrity.
Participated in the siding loan program.

Staff Comment:

Staff agree and believe it should be considered non-contributing.



**Deadwood National Historic Landmark District
Historic District Amendment – Deadwood Historic Preservation Review and Comment
Contributing to Non-Contributing Structures**

18 Denver (LA00101627)

c.1890

Noncontributing.

House:

1993 survey this property is listed as contributing.

2008 survey lists this structure as contributing.

2022 Entered into grant programs to restore windows, install wood storm windows

Remove asphalt siding and repair original siding with cedar siding

2023 Entered into foundation program to repair foundation

Staff Comment:

Staff disagree and believe it should be considered as contributing.



**Deadwood National Historic Landmark District
Historic District Amendment – Deadwood Historic Preservation Review and Comment
Contributing to Non-Contributing Structures**

57 Denver (LA00101818)

c.1895

Noncontributing (Garage Noncontributing)

Modified.

House:

1993 survey list the house as non-contributing

2008 survey lists the structure as contributing. Neither surveys include the garage.

This structure has a large addition on the primary side, non-historic windows and framing.

These alteration has caused the structure to lose integrity.

Staff Comment:

Staff agrees and believe it should be considered non-contributing.



**Deadwood National Historic Landmark District
Historic District Amendment – Deadwood Historic Preservation Review and Comment
Contributing to Non-Contributing Structures**

64 Denver (LA00101833)

c.1896

Noncontributing

Cube form. New windows and doors. Wood deck on façade.

House:

1993 and 2008 surveys list the structure as contributing. The garage and additional structures are non-contributing – built after period of significance.

Inappropriate casement windows were installed at some point. A project approval was issued in 2001 but no specifications of the windows was listed.

Staff Comment:

Staff disagree and believe it should be considered contributing.



**Deadwood National Historic Landmark District
Historic District Amendment – Deadwood Historic Preservation Review and Comment
Contributing to Non-Contributing Structures**

101 Denver (LA00101823)

c.1935

Noncontributing

New construction - heavily modified.

House:

1993 and 2008 surveys lists this structure as contributing. Building permits issued in 2009 for windows and siding but no project approvals.

Staff Comment:

Staff agree and believe it should be considered non-contributing.



**Deadwood National Historic Landmark District
Historic District Amendment – Deadwood Historic Preservation Review and Comment
Contributing to Non-Contributing Structures**

20 Dudley (LA00101797)

c.1900

Noncontributing

Modified.

House:

1993 Survey lists this structure as contributing.

2008 survey lists the property as contributing. This survey also lists 20A, B & C as non-contributing. Not sure what that is.

Staff Comment:

Staff disagree and believe it should be considered contributing.



**Deadwood National Historic Landmark District
Historic District Amendment – Deadwood Historic Preservation Review and Comment
Contributing to Non-Contributing Structures**

101 Forest (LA00101868)

c.1900

Noncontributing

Modified siding, windows, porch.

House:

1993 survey list this property as contributing.

2008 survey lists it as Y Y NC.

Staff Comment:

Staff agree and believe it should be considered non-contributing.



**Deadwood National Historic Landmark District
Historic District Amendment – Deadwood Historic Preservation Review and Comment
Contributing to Non-Contributing Structures**

26 Fremont (LA00101875)

c.1895

Noncontributing

House:

1993 survey lists the structure as contributing.

2008 survey lists the structure as contributing

September 2012 – deck replaced.

October 2017 – Replace door, one window, repair foundation and replace siding. – No building permit issued.

2017 Entered into grant programs Siding, Foundation and Windows and Doors Programs

2020 Entered into Windows and Doors Program - use remaining funds

Staff Comment:

Staff disagree and believe it should be considered contributing.



**Deadwood National Historic Landmark District
Historic District Amendment – Deadwood Historic Preservation Review and Comment
Contributing to Non-Contributing Structures**

11 Jackson (LA00101841)

Ca. 1942

Noncontributing

Modified.

House:

1993 survey lists this structure as contributing

2008 survey lists this structure as contributing

2005 Revolving Loan Program

2016 Wood Windows & Doors Program

2018 Elderly Resident Program

Staff Comments:

Staff disagree and believe it should be considered contributing.



**Deadwood National Historic Landmark District
Historic District Amendment – Deadwood Historic Preservation Review and Comment
Contributing to Non-Contributing Structures**

15 Jackson (LA00101842)

Ca 1941

Noncontributing

Modified.

House:

1993 survey listed as contributing

2008 survey listed as contributing

1995 new railing

2008 new garage doors

2024 new fence

Staff Comment:

Staff disagree and believe it should be considered contributing.



Deadwood National Historic Landmark District

Historic District Amendment – Deadwood Historic Preservation Review and Comment

Contributing to Non-Contributing Structures

35 Jackson (LA00101852)

c.1905

Noncontributing

Two story gable and wing form. Sliding screen doors on both levels.

House:

1976 permit issued for addition

1981 remodeling occurred. (not sure if building permits were issued) It was recorded in a recent survey as being “barely contributing” per a 7/12/94 letter from Mark Wolfe

1993 survey listed as contributions

1994 addition added to back

1996 extended front porch over deck south side of house at back of structure

2008 survey listed as contributing

2012 entered into Siding, Wood Windows and Doors Program

Staff Comment:

Staff disagree and believe it should be considered contributing.



**Deadwood National Historic Landmark District
Historic District Amendment – Deadwood Historic Preservation Review and Comment
Contributing to Non-Contributing Structures**

681 Main (LA00101350)

1923/1935

Noncontributing

Infill. “2009” below cornice.

Structure:

1993 survey listed as contributing

2008 survey listed as contributing

2008 approval for reconstruction of façade

2016 replace storefront windows to match balance of façade & create taller rear windows of the structure

Staff Comments:

Staff agree and believe it should be considered non-contributing.



**Deadwood National Historic Landmark District
Historic District Amendment – Deadwood Historic Preservation Review and Comment
Contributing to Non-Contributing Structures**

306 McGovern Hill Road (LA00100022)

1936

Noncontributing

Side gable with a large gable addition on the façade and another gable addition on side elevation. Wide siding and asphalt shingles. Large modern windows on façade and modern door. Modern wood deck.

Structure:

1993 survey listed as non-contributing

2008 survey listed as non-contributing

Staff Comments:

Staff disagree and believe it should be considered contributing.



**Deadwood National Historic Landmark District
Historic District Amendment – Deadwood Historic Preservation Review and Comment
Contributing to Non-Contributing Structures**

308 McGovern Hill Road (LA00100023)

1940

Noncontributing

Several including a large gable addition on façade. Mix of windows. Wide cedar siding. Modern wood deck.

Structure:

1993 survey listed as contributing

2008 survey listed as contributing

In 1988 the house was demoed

1989 a new house was constructed

Staff Comment:

Staff agree and believe it should be considered non-contributing. (No longer exists)



**Deadwood National Historic Landmark District
Historic District Amendment – Deadwood Historic Preservation Review and Comment
Contributing to Non-Contributing Structures**

20 McKinley (LA00101259)

1932

Noncontributing (Garage Noncontributing)

Side gabled volume with flanking gabled volumes. Stone veneer on side gabled volume. Stucco.

Structure:

1993 survey listed as contributing

2008 survey listed as contributing

Staff Comment:

Staff disagree and believe it should be considered contributing.



**Deadwood National Historic Landmark District
Historic District Amendment – Deadwood Historic Preservation Review and Comment
Contributing to Non-Contributing Structures**

4 Pearl (LA00101496)

1935

Noncontributing

Wide siding. Vertical siding in gables. Variety of windows.

Structure:

1984 Replace window with bay window.

1989 Install Masonite siding

1993 letter from SHPO stating bay window does not have adverse effect.

1993 survey listed as contributing

2008 survey listed as contributing

Staff Comment:

Staff disagree and believe it should be considered contributing.



Pictures continued on next page

Deadwood National Historic Landmark District
Historic District Amendment – Deadwood Historic Preservation Review and Comment
Contributing to Non-Contributing Structures



**Deadwood National Historic Landmark District
Historic District Amendment – Deadwood Historic Preservation Review and Comment
Contributing to Non-Contributing Structures**

20 Pleasant (LA00101791)

Noncontributing

Modern. Cedar siding. Cedar deck.

Structure:

1993 survey listed as non-contributing

Staff Comment:

Staff agree and believe it should be considered non-contributing.



**Deadwood National Historic Landmark District
Historic District Amendment – Deadwood Historic Preservation Review and Comment
Contributing to Non-Contributing Structures**

24 Raymond (LA00101508)

1880

Noncontributing

Large, two-story new deck on façade.

Structure:

1993 survey listed as contributing

2008 survey listed as contributing

2012 second story stairs and landing approved

2017 open the front porch to reflect the original appearance of the home and possibly extend it to make it more user-friendly. All columns, railings and spindles will reflect the historical character of the house. Add a balcony above the porch that can be accessed from the existing doors on the second floor of the house. All columns, railings and spindles will reflect the historic character of the house.

2018 building permit issued for siding, windows, doors, build deck – NO HP approval – (hp gave approval for balcony – not deck).

Staff Comment:

Staff disagree and believe it should be considered contributing.



**Deadwood National Historic Landmark District
Historic District Amendment – Deadwood Historic Preservation Review and Comment
Contributing to Non-Contributing Structures**

3 Rodenhaus (LA00101511)

1900

Noncontributing

Cube form. Modified. New deck.

Structure:

1993 survey listed as contributing

2008 survey listed as contributing

1999 inappropriate siding installed

2009 HP approval to remove improper siding, repair and replace windows through window program

2015 HP approval for new garage

2017 Bldg. permit issued for garage

Staff Comment:

Staff disagree and believe it should be considered contributing.



**Deadwood National Historic Landmark District
Historic District Amendment – Deadwood Historic Preservation Review and Comment
Contributing to Non-Contributing Structures**

6 Sampson (LA00100140)

1950

Noncontributing (Garage Noncontributing)

Gable and wing ranch form. Wide siding. Variety of wood windows. Wood decks.

Structure:

1993 survey listed as non-contributing – constructed 1950

Staff Comment:

Staff agree and believe it should be considered non-contributing.



**Deadwood National Historic Landmark District
Historic District Amendment – Deadwood Historic Preservation Review and Comment
Contributing to Non-Contributing Structures**

15 Stewart (LA00101561)

1950

Noncontributing (Garage Noncontributing)

Two story. Gabled.

Structure:

1993 survey listed as non-contributing – constructed 1950

Staff Comment:

Staff agree and believe it should be considered non-contributing.



**Deadwood National Historic Landmark District
Historic District Amendment – Deadwood Historic Preservation Review and Comment
Contributing to Non-Contributing Structures**

75 Stewart (LA00101522)

1890

Noncontributing

Hipped roof with shed roofed porch enclosure. Replacement windows and siding.

Structure:

1993 survey listed as contributing – this early house shows evidence of being remodeled c 1930. At that time, the windows were replaced. The front porch was also likely added and the left side porch added or enclosed. A modern garage was added to the left side and a picture window installed in the front.

2008 survey listed as C C NC

2001 building permit issued to build new porch

Staff Comment:

Staff agree and believe it should be considered non-contributing.



**Deadwood National Historic Landmark District
Historic District Amendment – Deadwood Historic Preservation Review and Comment
Contributing to Non-Contributing Structures**

61 Taylor (LA00101395)

Ca 1944

Noncontributing (Garage Contributing)

Gabled with gabled entrance. Shingle-like treatment in gables. Wood siding; brick and stone veneers.

Structure:

1993 survey listed as contributing

2008 survey listed as contributing

2019 entered into the grant programs for siding, windows and doors programs and loan program

Staff Comment:

Staff disagree and believe it should be considered contributing.



**Deadwood National Historic Landmark District
Historic District Amendment – Deadwood Historic Preservation Review and Comment
Contributing to Non-Contributing Structures**

66 Taylor (LA00101400)

1941

Noncontributing (Garage Contributing)

Side gable with gabled entry volume. 3/1s.

Structure:

1993 survey listed as contributing

2008 survey listed as contributing

2022 entered into foundation and windows program

Staff Comment:

Staff disagree and believe it should be considered contributing.



**Deadwood National Historic Landmark District
Historic District Amendment – Deadwood Historic Preservation Review and Comment
Contributing to Non-Contributing Structures**

128 Williams (LA00100153)

1939

Noncontributing

Modified. Cedar rustic-look siding. Gable and wing form. Gable over entrance. Gables have returns. Garage underneath gable.

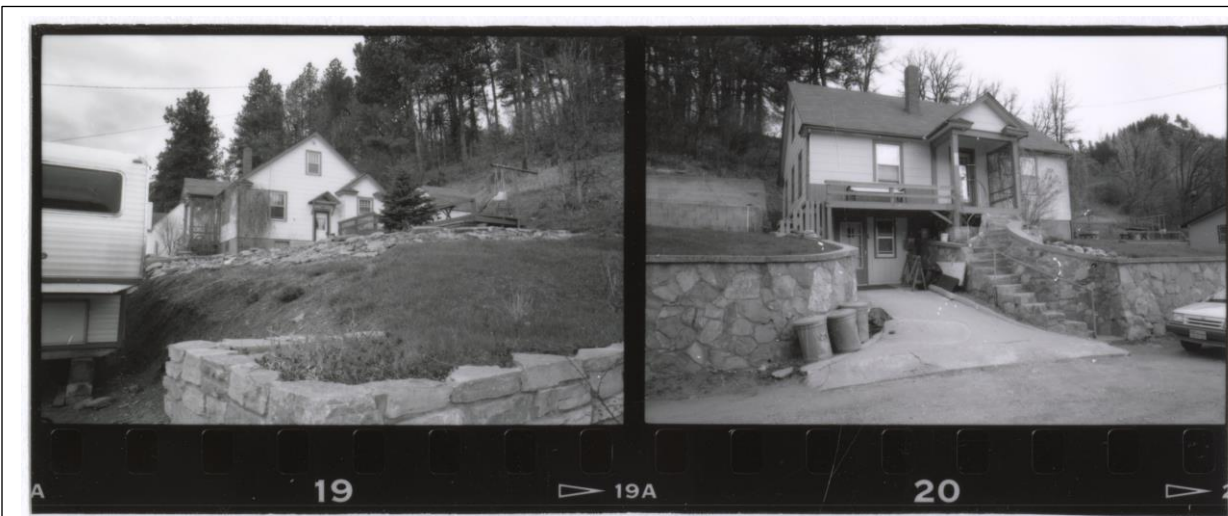
Structure:

1993 survey listed as contributing

2008 survey listed as contributing

Staff Comments:

Staff agree and believe it should be considered non-contributing.



**Deadwood National Historic Landmark District
Historic District Amendment – Deadwood Historic Preservation Review and Comment
Contributing to Non-Contributing Structures**

227 Williams (LA00101458)

1890

Noncontributing

Modified, additions.

Structure:

1993 survey listed as contributing

2008 survey listed as contributing

2022 entered into loan programs – Foundation, Siding, Wood Windows and doors, Vacant Home

Staff Comments:

Staff agree and believe it should be considered non-contributing.



--

Deadwood National Historic Landmark District
Historic District Amendment – Deadwood Historic Preservation Review and Comment
Contributing to Non-Contributing Structures

DISTRICT AMENDMENT

STATUS CHANGE FOR 17 STRUCTURES

NON-CONTRIBUTING TO CONTRIBUTING

**Deadwood National Historic Landmark District
Historic District Amendment – Deadwood Historic Preservation Review and Comment
Contributing to Non-Contributing Structures**

30 Adams

Participated in HP Grant Programs -- 2019

Siding – replaced steel siding with Hardy Board

Foundation

Windows/Doors

Staff agree and believe it should be considered contributing.



**Deadwood National Historic Landmark District
Historic District Amendment – Deadwood Historic Preservation Review and Comment
Contributing to Non-Contributing Structures**

1 Burnham

Participated in the Façade Easement Program – 2021

Staff agree and believe it should be considered contributing.



**Deadwood National Historic Landmark District
Historic District Amendment – Deadwood Historic Preservation Review and Comment
Contributing to Non-Contributing Structures**

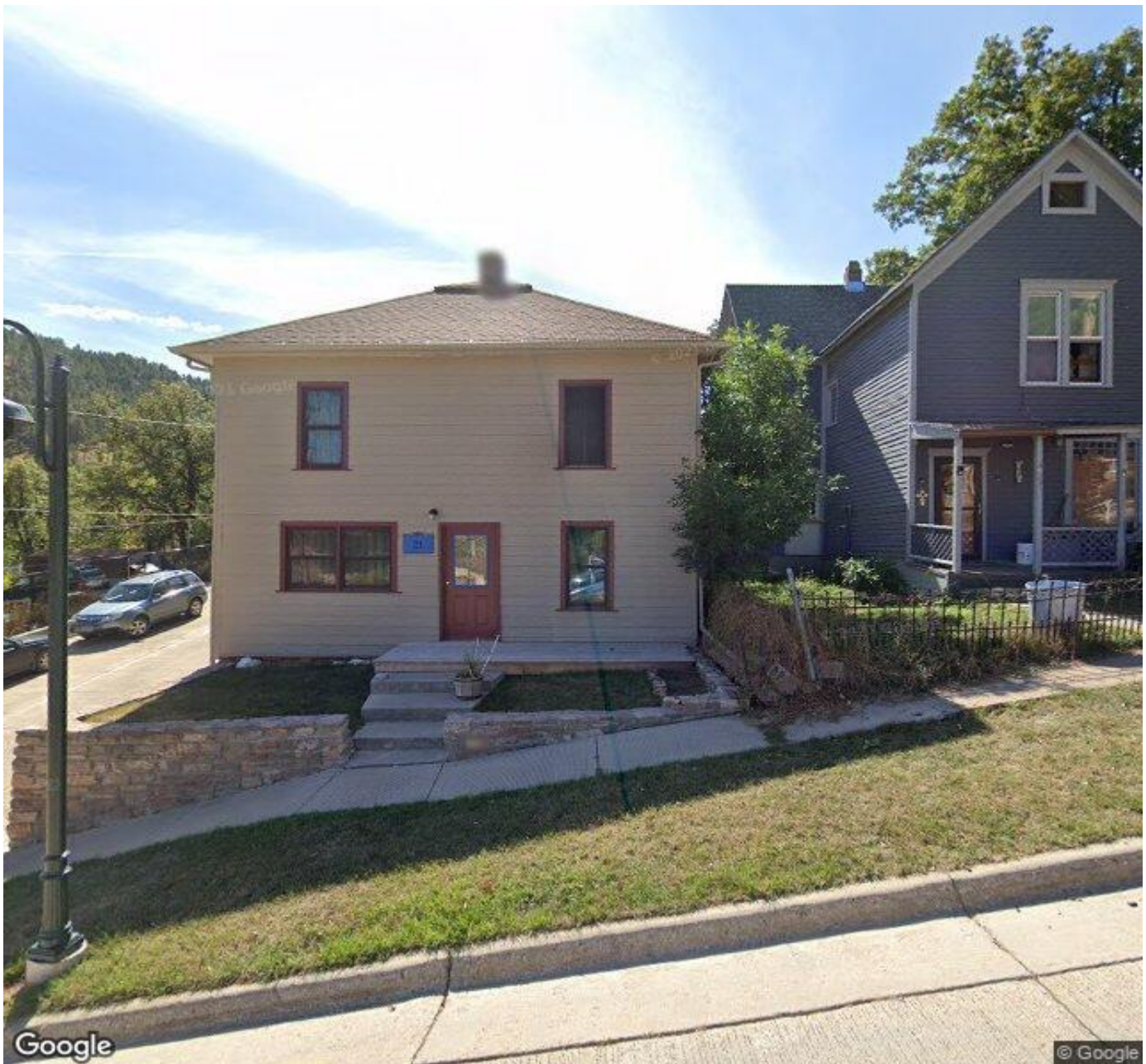
21 Burnham

Participated in the HP Grant Programs – 2016

Siding

Wood Windows and Doors

Staff agree and believe it should be considered contributing.



**Deadwood National Historic Landmark District
Historic District Amendment – Deadwood Historic Preservation Review and Comment
Contributing to Non-Contributing Structures**

112 Charles

Staff agree and believe it should be considered as contributing.



**Deadwood National Historic Landmark District
Historic District Amendment – Deadwood Historic Preservation Review and Comment
Contributing to Non-Contributing Structures**

124 Charles

Participating in the grant programs in 2019

Siding

Wood Windows and Doors

Foundation

Elderly Resident

Paint

Staff agree and believe it should be considered as contributing.



**Deadwood National Historic Landmark District
Historic District Amendment – Deadwood Historic Preservation Review and Comment
Contributing to Non-Contributing Structures**

1 Forest

Staff agree and believe it should be considered contributing.



**Deadwood National Historic Landmark District
Historic District Amendment – Deadwood Historic Preservation Review and Comment
Contributing to Non-Contributing Structures**

41 Forest

Staff agree and believe it should be considered contributing.



**Deadwood National Historic Landmark District
Historic District Amendment – Deadwood Historic Preservation Review and Comment
Contributing to Non-Contributing Structures**

47 Forest

This property went through the grant programs.

Siding – 2016

Wood Windows and Doors – 2016

Elderly Resident – 2016

Foundation – 2018

Paint – 2018

Staff agree and believe it should be considered contributing.



**Deadwood National Historic Landmark District
Historic District Amendment – Deadwood Historic Preservation Review and Comment
Contributing to Non-Contributing Structures**

8 Lincoln

Staff agree and believe it should be considered contributing.



**Deadwood National Historic Landmark District
Historic District Amendment – Deadwood Historic Preservation Review and Comment
Contributing to Non-Contributing Structures**

58 Madison

This property was listed as not future eligible because of all the modern modifications. Staff agree and believe it should be considered contributing.



**Deadwood National Historic Landmark District
Historic District Amendment – Deadwood Historic Preservation Review and Comment
Contributing to Non-Contributing Structures**



792 Main

Staff agree and believe it should be considered contributing.

**Deadwood National Historic Landmark District
Historic District Amendment – Deadwood Historic Preservation Review and Comment
Contributing to Non-Contributing Structures**



**Deadwood National Historic Landmark District
Historic District Amendment – Deadwood Historic Preservation Review and Comment
Contributing to Non-Contributing Structures**

39 Sampson

(not current photo)

Staff agree and believe it should be considered contributing.



**Deadwood National Historic Landmark District
Historic District Amendment – Deadwood Historic Preservation Review and Comment
Contributing to Non-Contributing Structures**

49 Terrace

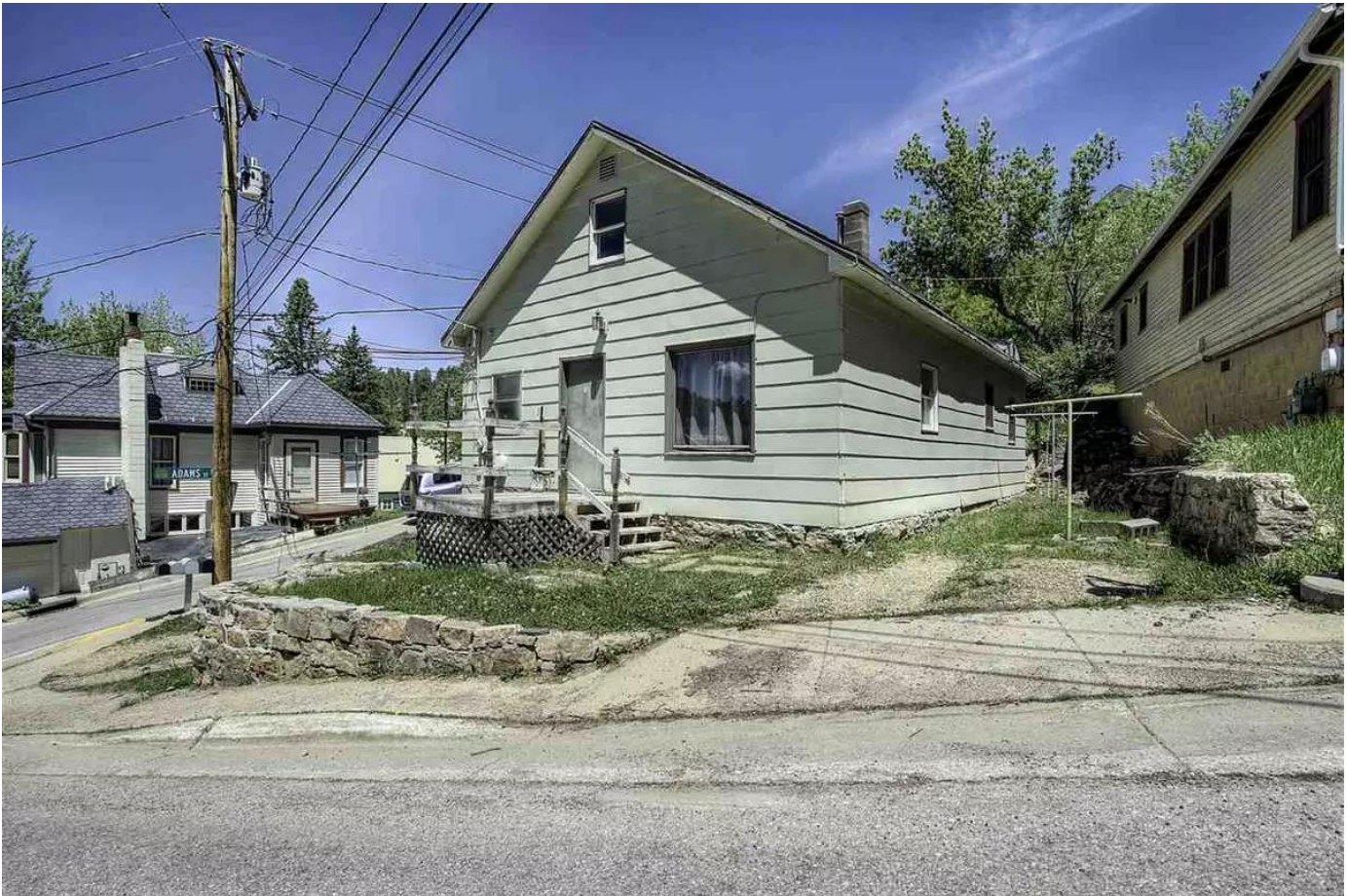
Staff agree and believe it should be considered contributing.



**Deadwood National Historic Landmark District
Historic District Amendment – Deadwood Historic Preservation Review and Comment
Contributing to Non-Contributing Structures**

57 Van Buren

Staff agree and believe it should be considered contributing.



**Deadwood National Historic Landmark District
Historic District Amendment – Deadwood Historic Preservation Review and Comment
Contributing to Non-Contributing Structures**

74 Van Buren

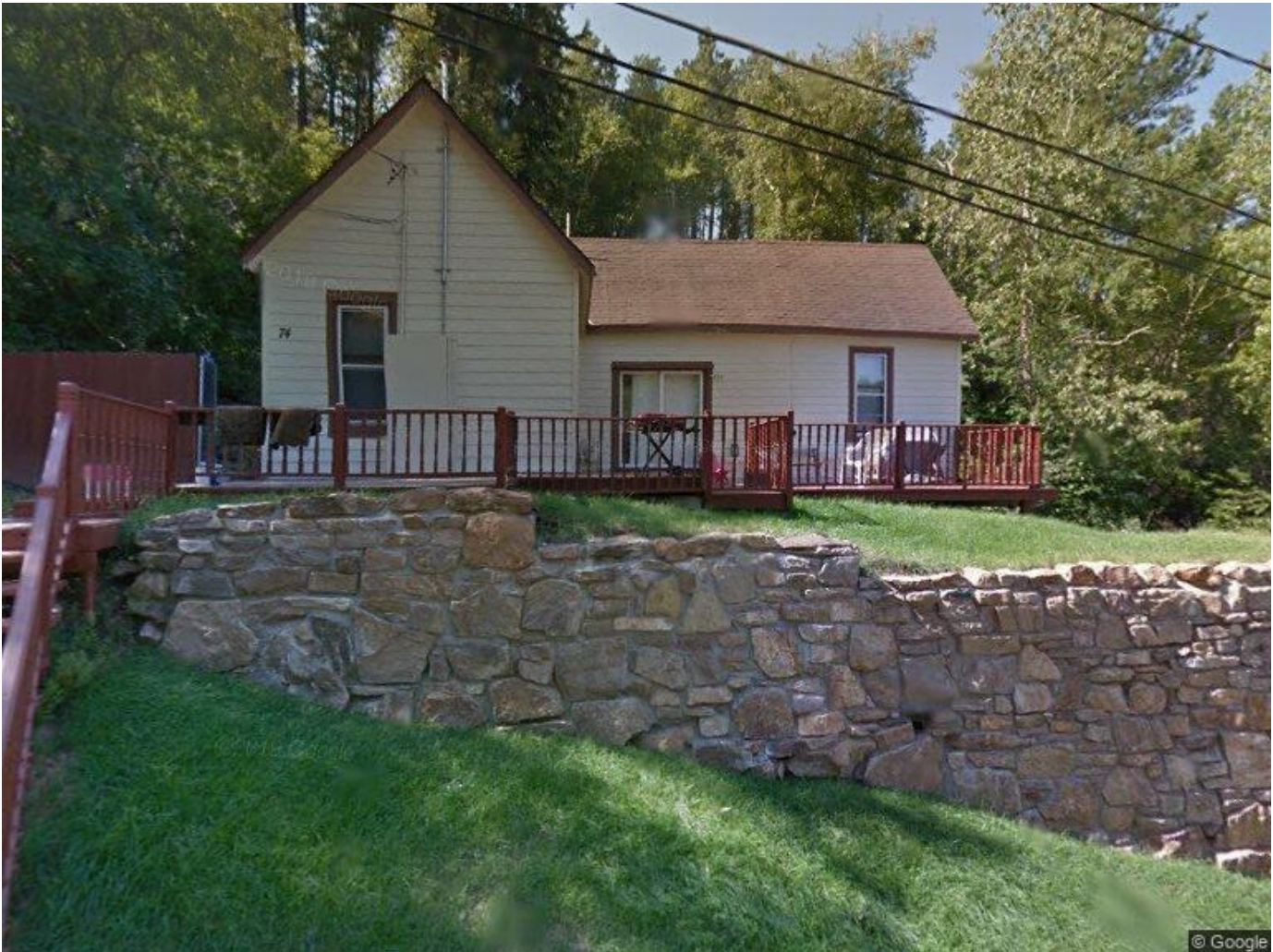
Participated in the grant programs

Foundation – 2018

Siding – 2019

Windows and Doors – 2019

Staff agree and believe it should be considered contributing.



**Deadwood National Historic Landmark District
Historic District Amendment – Deadwood Historic Preservation Review and Comment
Contributing to Non-Contributing Structures**

320 Williams

Participated in the Siding and Foundation Programs in 2023
Staff agree and believe it should be considered contributing.

