



**Albertson Engineering Inc.**

605-343-9606

[www.albertsonengineering.com](http://www.albertsonengineering.com)

3202 W. Main, Suite C  
Rapid City, SD 57702

315 N. Main Ave., Suite 200  
Sioux Falls, SD 57104

201 S. Monroe St., Suite 203A  
Winner, SD 57580

## CONSTRUCTION CHANGE ORDER NO. 2

Project: Whitewood Creek Restoration – Bid Package 1  
 AEI Project #: 2020-096.1  
 Owner: City of Deadwood  
 Engineer: Albertson Engineering Inc.  
 Contract Date: August 1, 2023  
 Date of Issuance: 12/07/2023  
 Issued to: RCS Construction, PO BOX 9337, Rapid City, SD 57709  
 Distribution to:  Owner  Engineer  Contractor

### YOU ARE HEREBY DIRECTED TO MAKE THE FOLLOWING CHANGES IN THIS CONTRACT:

1. Phase 1C Trolley Lane Area Changes as per the following attachments:
  1. Cost Proposal #1 by RCS Construction
  2. TDG RFI #1 WWC – Bio Engineering and Tolley Lane Sheet Revisions

---

**Not valid until signed by both the Owner and Contractor. Signature of the Contractor indicates his/her agreement herewith, including any adjustment in the Contract Sum or Contract Time.**

---

### CONTRACT STATUS:

The Original Contract Sum	\$7,575,000.00
Net Change by Previously Authorized Change Orders	\$ 37,588.67
Contract Sum Prior to This Change Order	\$7,612,588.67

Contract Sum Increase Per This Change Order	\$ 3,612.00
New Contract Sum Will Be	\$7,616,200.67

The Contract Time Will Be unchanged. The project schedule is:

Site 1C, 2A, & 2B:

May 26, 2024 – Substantial Completion  
June 16, 2024 – Final Completion

Site 3A:

December 1, 2024 – Substantial Completion  
December 15, 2024 – Final Completion

Site 3B:

March 15, 2024 – Site available to Contractor  
October 4, 2024 – Substantial Completion  
October 18, 2024 – Final Completion

**AUTHORIZED SIGNATURES**

The persons executing this Agreement hereby represent that they have authorization to sign

\_\_\_\_\_  
Owner (Signature)

\_\_\_\_\_  
Contractor (Signature)

\_\_\_\_\_  
(Printed name and title)

\_\_\_\_\_  
(Printed name and title)

**CITY OF DEADWOOD**

**RCS CONSTRUCTION**

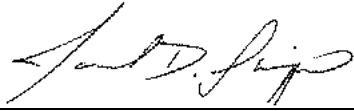
\_\_\_\_\_  
Date

\_\_\_\_\_  
Date

\_\_\_\_\_  
Email

\_\_\_\_\_  
Email





---

Engineer *(Signature)*

---

Jared Schippers, PE, Principal  
*(Printed name and title)*

**Albertson Engineering Inc.**

---

12/7/2023  
*Date*

---

[jared@albertsonengineering.com](mailto:jared@albertsonengineering.com)  
*Email*



---

**Albertson Engineering Inc.**

605-343-9606  
[www.albertsonengineering.com](http://www.albertsonengineering.com)  
Rapid City, Sioux Falls, and Winner



December 7, 2023

Jared Schippers, PE
jared@albertsonengineering.com
Albertson Engineering Inc.
3202 West Main Street, Suite C
Rapid City SD 57702

RE: Whitewood Creek Restoration, Deadwood SD
Sites 1C, 2A, 2B, 3A, & 3B
Cost Proposal #01 - TDG RFI #1 WWC – Bio Engineering and Trolley Lane Sheet Revisions

Dear Jared,

We are pleased to provide you with the following proposal for cost changes related to TDG RFI #1 WWC – Bio Engineering and Trolley Lane Sheet Revisions dated November 08, 2023. RCS Construction is requesting a time extension related to the quoted work. RCS is proposing to eliminate the retaining wall and creek-side work substantial completion date of April 12, 2024 for sites 1C, 2A and 2B. The project substantial completion date for these sites would remain May 26, 2024.

Phase 1C Trolley Lane Area Changes:
Deduct Cobble Landscape Area (\$600.00)
Additional Asphalt Pavement Area \$4,212.00
Total Change Related to Trolley Lane Change: \$3,612.00

Phase 2A Replace Rip Rap with Envirolok Wall
Deduct Rip Rap Material (\$11,235.00)
Add Envirolok Wall \$48,823.67
Total Change for Envirolok Wall: \$37,588.67

Total Cost Changes for TDG RFI #1 WWC: \$41,200.67

Please review the following inclusions and exclusions on page 2 for this work.



Safety • Quality • Communication • Timeliness

P.O. Box 9337 • Rapid City, SD 57709-
9337 Phone (605) 342-3787 • Fax (605)
348-4041

www.rcsconst.com



**We Include:**

- Envirolok wall based on design provided by Envirolok dated November 2023
- Backfill material is assumed to be on-site material.
- 4" Drain pipe with clean rock wrapped in fabric behind wall is included
- Envirolok wall will be hydroseeded to provide vegetation on face of wall

**We Exclude:**

- **Live plantings and/or sod on Envirolok wall**
- **Testing**

We appreciate the opportunity to provide this proposal and should you have any questions or comments please don't hesitate to contact our office.

Kind Regards,

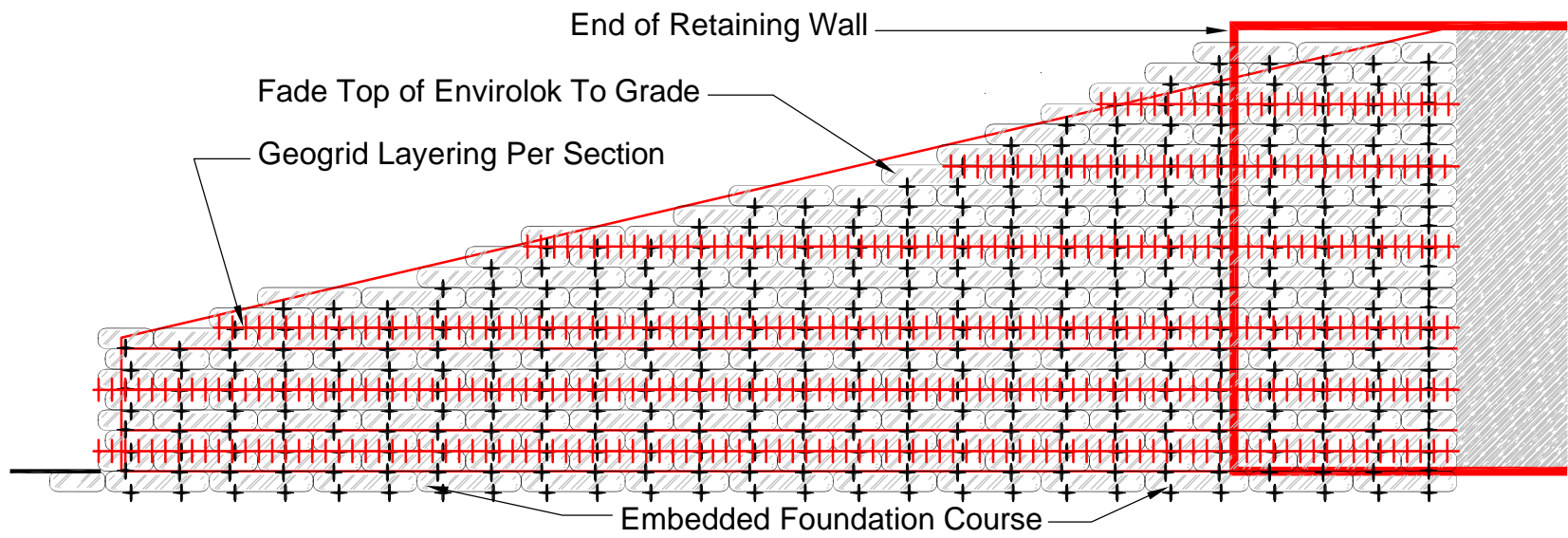
*Reid Hansen*

Reid Hansen  
Project Manager

Safety • Quality • Communication • Timeliness

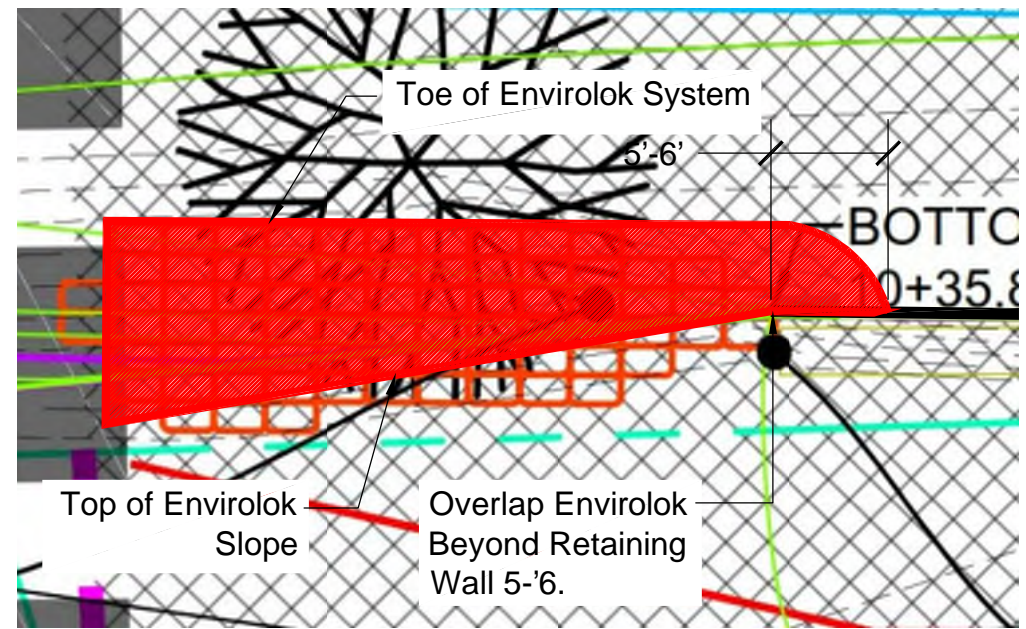
P.O. Box 9337 • Rapid City, SD 57709-  
9337 Phone (605) 342-3787 • Fax (605)  
348-4041

[www.rcsconst.com](http://www.rcsconst.com)



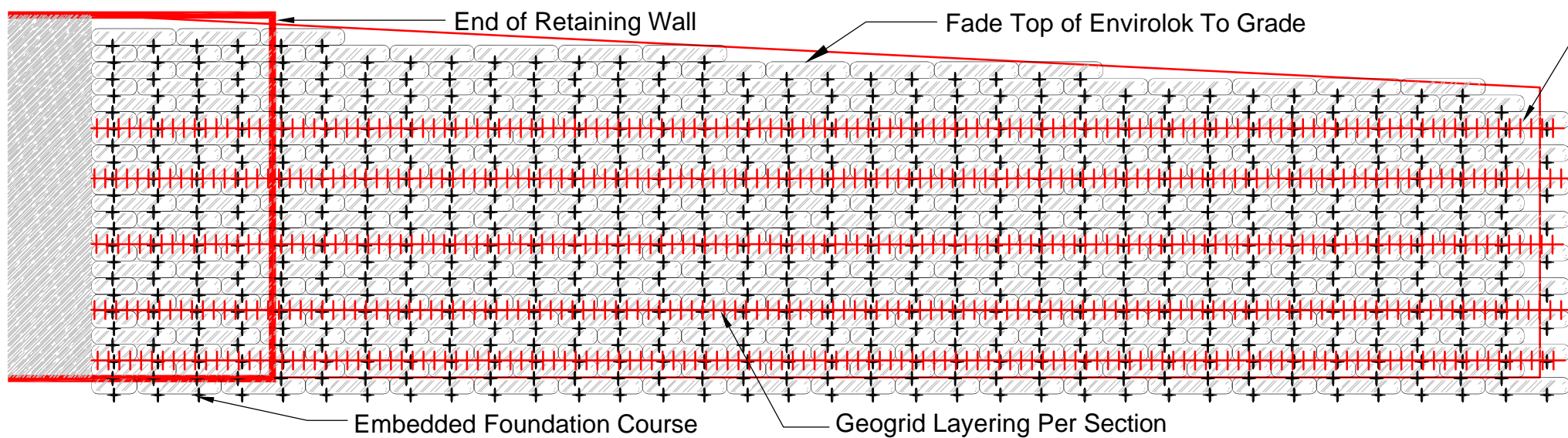
Envirolok Elevation @ Wall 2A (Sheet C-406R)

SCALE: 1/4" = 1'-0"  
 0 2 4 8



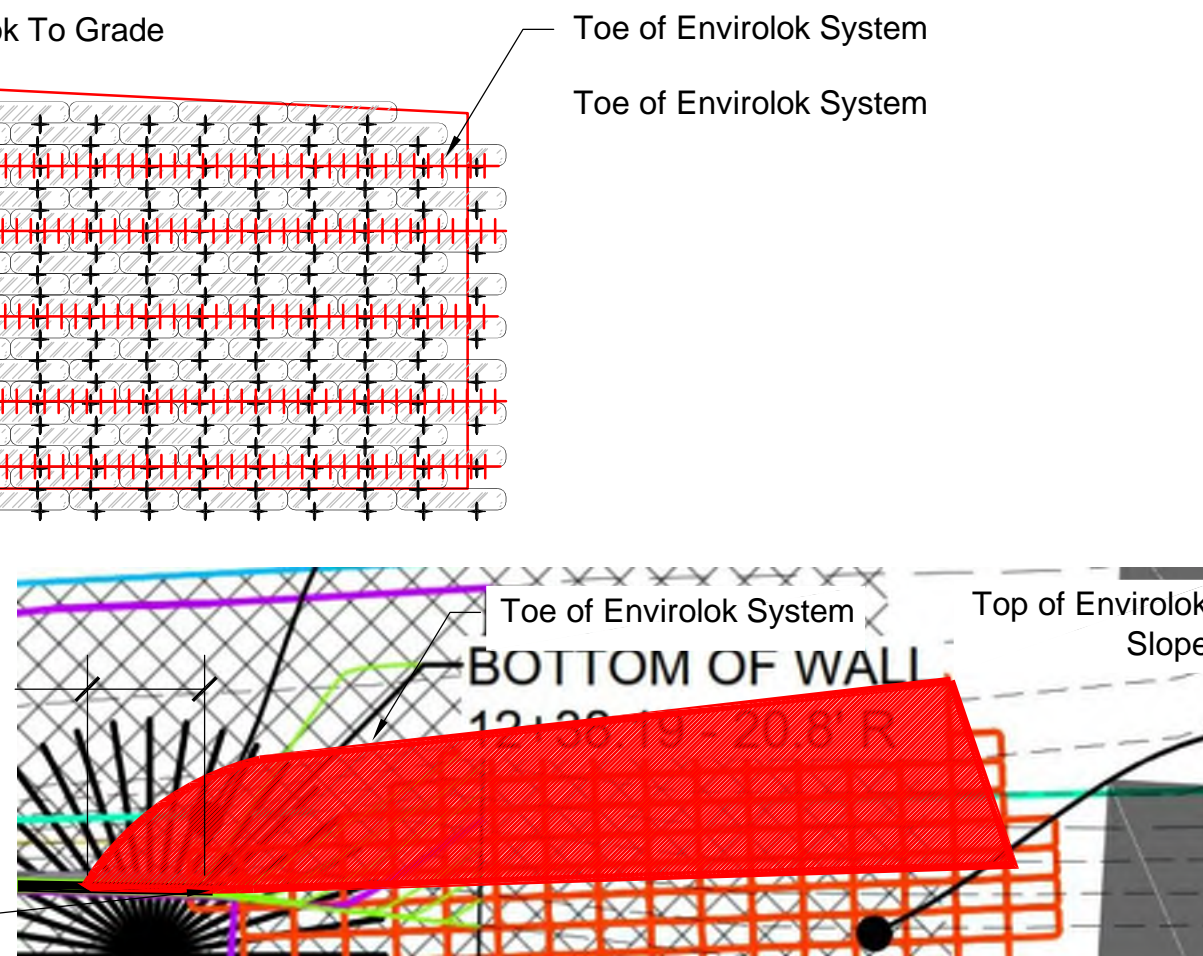
Envirolok Plan @ Wall 2A (Sheet C-406R)

SCALE: 1/8" = 1'-0"  
 0 4 8 16



Envirolok Elevation @ Wall 2A (Sheet C-407R)

SCALE: 1/4" = 1'-0"  
 0 2 4 8



Envirolok Plan @ Wall 2A (Sheet C-407R)

SCALE: 1/8" = 1'-0"  
 0 4 8 16

REVISIONS



10101 N. Casey Road  
 Evansville, WI 53536  
 (P) 608.226.2565

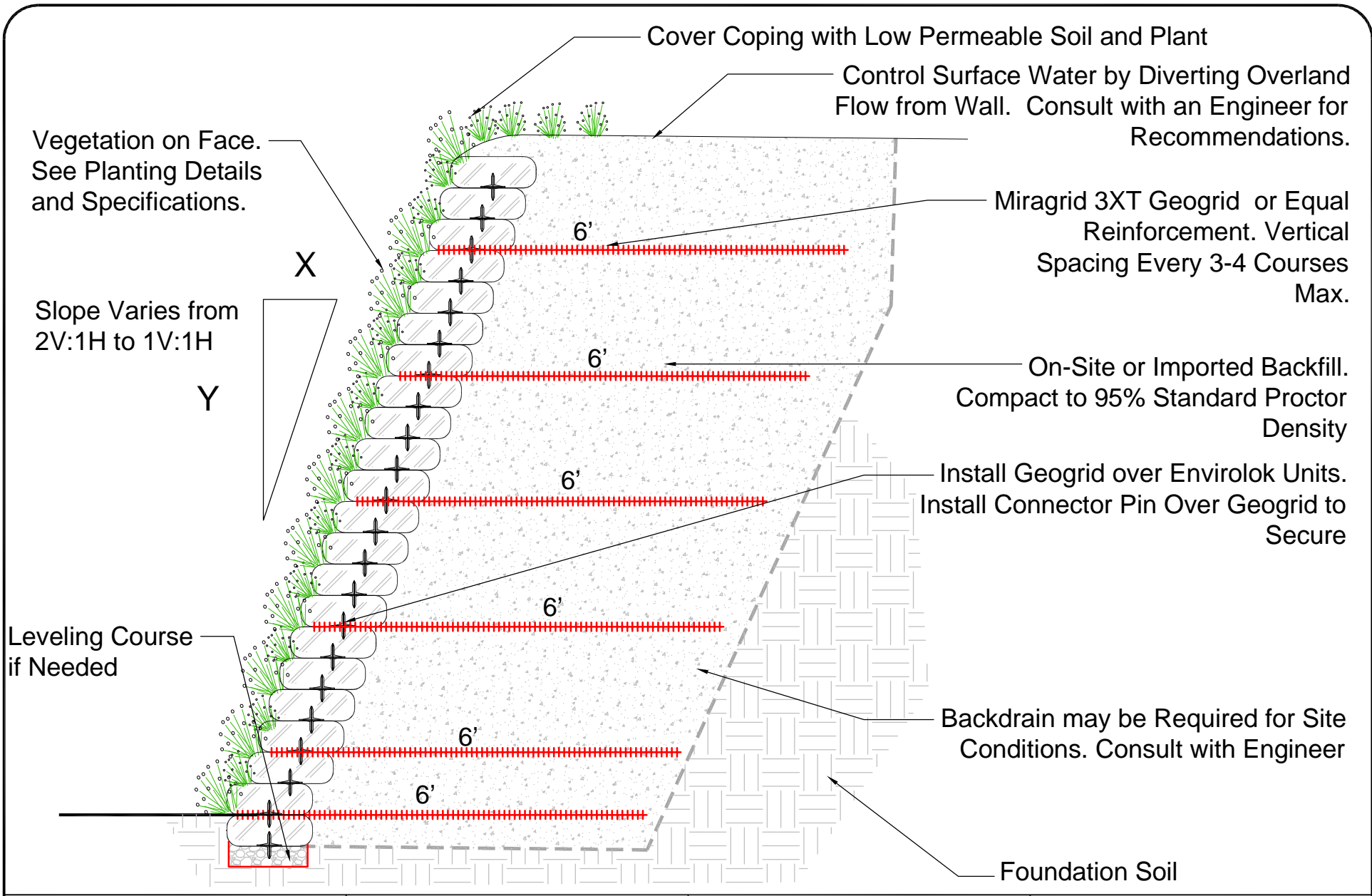
TITLE  
**WHITEWOOD CREEK  
 SLOPE STABILIZATION**

DATE  
 NOVEMBER 2023

SHEET  
 SHEET 1 OF 2

This is a typical, non-site specific design. Envirolok LLC makes these documents available on an "as is" basis. All CAD (dwg) and PDF (.pdf) files were created as a service to our customers. Final determination of the suitability of any information or materials for the construction of a project should be made by the user. A final project specific design should be prepared by a qualified, licensed professional engineer. THIS DRAWING IS NOT FOR CONSTRUCTION. Copyright 2020, Envirolok LLC

www.envirolok.com  
 ecosolutions@envirolok.com  
 (F) 608.894.4640



This is a typical, non-site specific design. Envirolok LLC makes these documents available on an "as is" basis. All CAD (.dwg) and PDF (.pdf) files were created as a service to our customers. Final determination of the suitability of any information or material for the use contemplated, and its manner of use, is the sole responsibility of the user. A final project specific design should be prepared by a qualified, licensed, professional engineer. THIS DRAWING IS NOT FOR CONSTRUCTION. Copyright 2020, Envirolok LLC

TITLE  
**GEOGRID LAYERING REINFORCEMENT**

DATE  
 NOVEMBER 2023

SCALE  
 1/2" = 1' - 0"

SHEET  
 SHEET 2 OF 2



10101 N. Casey Road  
 Evansville, WI 53536  
 (P) 608.226.2565

www.envirolok.com  
 ecosolutions@envirolok.com  
 (F) 608.884.4640

REVISIONS



**Date:** November 08, 2023

**Client:** Jared Schippers  
Albertson Engineering

**Engineer:** Michael Towey  
Towey Design Group, Inc.

**RE:** **TDG RFI #1 WWC – Bio Engineering and Trolley Lane Sheet Revisions**

---

All,

This letter is to support revised sheets C-307R, C-404R, C-406R, C-407R, C-707, C-708.

Sheet C-307R includes changes the trolley lane area. These changes were done to allow semi-truck traffic to drive through the trolley lane area to safely exit Water Street. The changes include;

- Changing the **INSIDE** radius of the trolley lane curve **FROM A** 100' radius (at TBC) **TO A** 268.33' radius (at TBC). The outer radius of the trolley lane curve remained unchanged at 113.34' (at TBC).
- Changing the affected elevation points. The affected points changed location and or elevation based on the radius change. Affected areas include:
  - Concrete Transformer Pad
  - 6' Sidewalk near the changed radius
  - TBC along the changed radius
  - TBC along the east curb of Trolley Lane
- No other points were changed south of Inset B (HC ramp nearest the Trolley shelter location) or north of the two HC ramps nearest the east most parking lot.

Sheet C-404R includes replacing riprap with the "Bio-engineering" substitute "Envirolok" wattles. Instead of riprap transitioning from the wall to the natural hillside grade, the Envirolok wattles will be used. This is a permanent erosion control device to not be removed after construction is complete.

Sheet C-406R shows the removed riprap from the east side of the 2A wall.

Sheet C-407-R shows the removed riprap from the west side of the 2A wall.

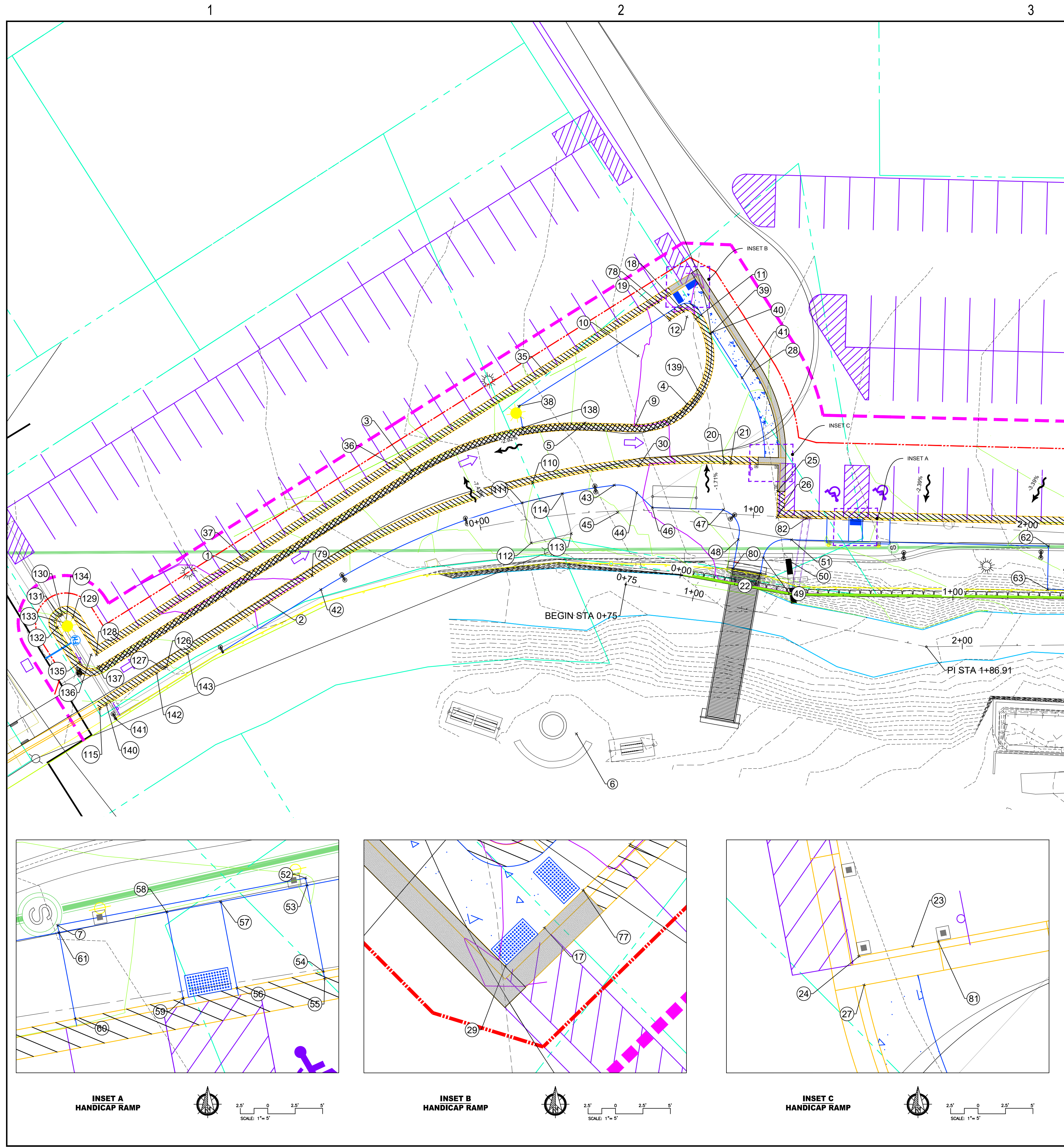
Sheets C-707 and C-708 include details for the installation of the Envirolok wattle wall transition.

Please Email or Call Brandon Kruse for any questions you have.

Email: [brandon@toweydesigngroup.com](mailto:brandon@toweydesigngroup.com)

Call: 605.600.3758





COORDINATE TABLE					COORDINATE TABLE				
Point #	Northing	Easting	Elevation	Description	Point #	Northing	Easting	Elevation	Description
1	218918.35	993868.12	4560.56	TBC	60	218684.96	993846.16	4567.25	TBC
2	218913.33	993855.76	4560.13	TBC	61	218686.55	993838.32	4567.37	WALK
3	218853.71	993894.36	4562.04	TBC	62	218629.75	993826.84	4568.22	WALK
4	218750.51	993900.79	4565.96	TBC	63	218632.86	993811.38	4567.68	WALK
5	218788.27	993900.36	4564.20	TBC	77	218748.79	993941.27	4564.84	TBC
6	218811.08	993789.34	94.11	RADIUS	78	218754.35	993939.01	4565.16	TBC
7	218686.68	993837.66	4567.37	TBC	79	218895.92	993862.83	4560.56	TBC
9	218770.09	993896.63	4565.28	TBC	80	218744.42	993838.66	4566.50	WALK
10	218765.06	993921.12	25.00	RADIUS	81	218728.85	993874.54	4566.47	TBC
11	218741.98	993930.72	4565.69	TBC	82	218714.86	993852.20	4567.25	TBC
12	218745.03	993932.00	2.33	RADIUS	110	218811.01	993882.05	4562.99	TBC
17	218744.24	993943.11	4564.91	TBC	111	218815.95	993875.69	4562.93	CONC
18	218745.91	993934.16	4565.44	TBC	112	218815.21	993860.71	4563.08	CONC
19	218751.47	993931.90	4565.26	TBC	113	218800.23	993861.48	4563.23	CONC
20	218741.01	993877.04	4566.41	TBC	114	218800.92	993876.46	4563.49	CONC
21	218738.65	993876.55	4566.54	TBC	115	218980.58	993828.46	4559.10	TBC
22	218734.91	993835.17	4566.50	WALK	126	218954.02	993839.24	4559.10	METAL
23	218726.52	993874.06	4566.44	TBC	127	218954.95	993838.86	4559.07	METAL
24	218721.63	993873.06	4566.37	TBC	128	218978.36	993848.08	4559.69	TBC
25	218723.52	993863.69	4566.74	TBC	129	218984.42	993863.01	4559.57	TBC
26	218725.40	993854.33	4566.69	TBC	130	218988.22	993864.61	4559.45	TBC
27	218721.08	993875.67	4566.42	TBC	131	218989.00	993864.29	4559.43	TBC
28	218724.46	993908.56	4565.88	TBC	132	218990.60	993860.50	4559.31	TBC
29	218739.61	993945.00	4564.98	TBC	133	218987.90	993861.60	2.91	RADIUS
30	218771.72	993881.51	4564.80	TBC	134	218987.12	993861.91	2.91	RADIUS
35	218799.29	993920.77	4563.87	TBC	135	218984.91	993846.49	4559.31	TBC
36	218858.98	993896.54	4562.03	TBC	136	218980.28	993848.37	5.00	RADIUS
37	218918.37	993872.43	4564.99	TBC	137	218978.40	993843.74	4559.56	TBC
38	218810.99	993910.62	4563.25	WALK	138	218810.99	993902.68	4563.30	TBC
39	218737.60	993924.55	4565.10	TBC	139	218745.77	993905.21	4565.92	TBC
40	218736.68	993924.93	4565.35	TBC	140	218977.97	993829.52	4559.04	WALK
41	218729.08	993906.64	4565.89	WALK	141	218975.71	993823.96	4559.19	WALK
42	218893.67	993857.26	4560.43	WALK	142	218957.89	993837.67	4558.74	TBC
43	218781.74	993876.19	4564.44	WALK	143	218945.55	993842.68	4559.34	TBC
44	218774.17	993872.09	4564.87	WALK					
45	218782.25	993866.20	4563.95	RADIUS					
46	218769.54	993865.74	4565.23	WALK					
47	218744.12	993860.52	4566.56	WALK					
48	218740.68	993848.86	4566.64	WALK					
49	218732.86	993840.75	4566.61	WALK					
50	218723.18	993837.55	8.00	RADIUS					
51	218721.60	993845.40	4566.77	WALK					
52	218709.22	993842.21	4567.02	TBC					
53	218709.09	993842.87	4567.03	WALK					
54	218707.51	993850.71	4566.91	TBC					
55	218707.37	993851.37	4566.41	TBC					
56	218699.67	993849.13	4566.63	RAMP					
57	218701.25	993841.29	4566.75	RAMP					
58	218696.35	993840.30	4566.85	RAMP					
59	218694.76	993848.14	4566.70	RAMP					

- B- GUTTER SEE SHEET C-700
- P- GUTTER SEE SHEET C-700
- T- GUTTER SEE SHEET C-700

CUT - 576.45 CY  
 FILL - 850.62 CY  
 NET - 274.18 CY

**SITE 1C**

REGISTERED PROFESSIONAL ENGINEER  
 REG. NO. 9254  
**MICHAEL J. TOWEY**  
 SOUTH DAKOTA

Albertson Engineering Inc.  
 3202 W. MAIN, SUITE C  
 RAPID CITY, SD 57702  
 605.343.9606

---

CONSULTANT

**TDG**  
 Towey Design Group  
 475 Villa Drive, Suite #3  
 Box Elder, SD 57719  
 605.600.3758

---

PROJECT IDEN:  
 WHITEWOOD CREEK RESTORATION  
 BID PACKAGE 1  
 SITES 1C, 2A, 2B, 3A, 3B

---

FEMA PROJECT NO. 123108  
 DEADWOOD, SOUTH DAKOTA

---

ISSUE BLOCK:

NO	ISSUE TYPE	ISSUE DATE
	65% PRELIM	12/30/2022
	100% CD	5/18/2023
	TDG RFI #1	11/08/2023

---

MANAGEMENT:  
 PROJECT NO: 20-096.1  
 DRAWN BY: NR  
 DESIGNED BY: BMK  
 CHECKED BY: MT  
 SHEET TITLE:

---

**SITE 1C GRADING**

---

SHEET IDENTIFICATION:  
C-307R

- 1 STA. 10+51.3 @ 163.8' L  
-INLET PROTECTION AT STREET
- 2 STA. 14+01.9 @ 180.4' L  
-INLET PROTECTION AT STREET
- 3 STA. 12+58.4 @ 41.2' R  
-VEHICLE TRACKING CONTROL
- 4 STA. 14+25.1 @ 52.1' L  
-VEHICLE TRACKING CONTROL

- 5 STA. 14+02.8 @ 28.5' L  
-CONCRETE WASHOUT AREA
- 6 STA. 10+10.4 @ 48.9' R TO 12+74.6 @ 47.5' R  
-WATTLE START AND END
- 7 STA. 10+04.40 @ 23.9' R TO 12+84.39 @ 16.0' R  
-RIGHT WATER DIVERSION BARRIER
- 8 STA. 6+74.03 @ 20.15' L  
-WATTLE START

- 9 STA. 17+49.4 @ 4.6' L  
-WATTLE END
- 10 STA. 7+60.9 @ 8.1' L TO STA. 17+53.2 @ 3.2' L  
-LEFT WATER DIVERSION BARRIER

1413 LINEAR FEET OF WATTLE  
 1130 LINEAR FEET OF LEFT BARRIER  
 285 LINEAR FEET OF RIGHT BARRIER

SITE 2A/B



Albertson Engineering Inc.  
 3202 W. MAIN, SUITE C  
 RAPID CITY, SD 57702  
 605.343.9606

CONSULTANT  
**TDG**  
 Towey Design Group  
 475 Villa Drive, Suite #3  
 Box Elder, SD 57719  
 605.600.3758

PROJECT IDEN:  
 WHITEWOOD CREEK RESTORATION  
 BID PACKAGE 1  
 SITES 1C, 2A, 2B, 3A, 3B

FEMA PROJECT NO. 123108  
 DEADWOOD, SOUTH DAKOTA

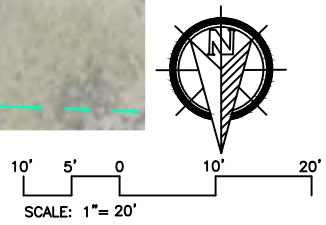
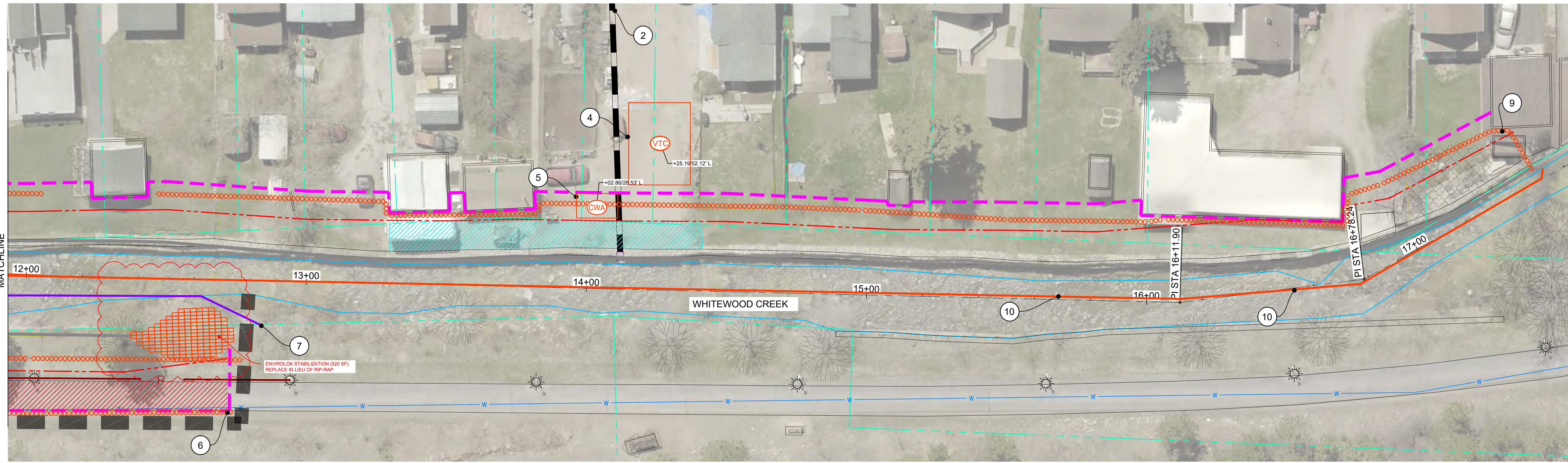
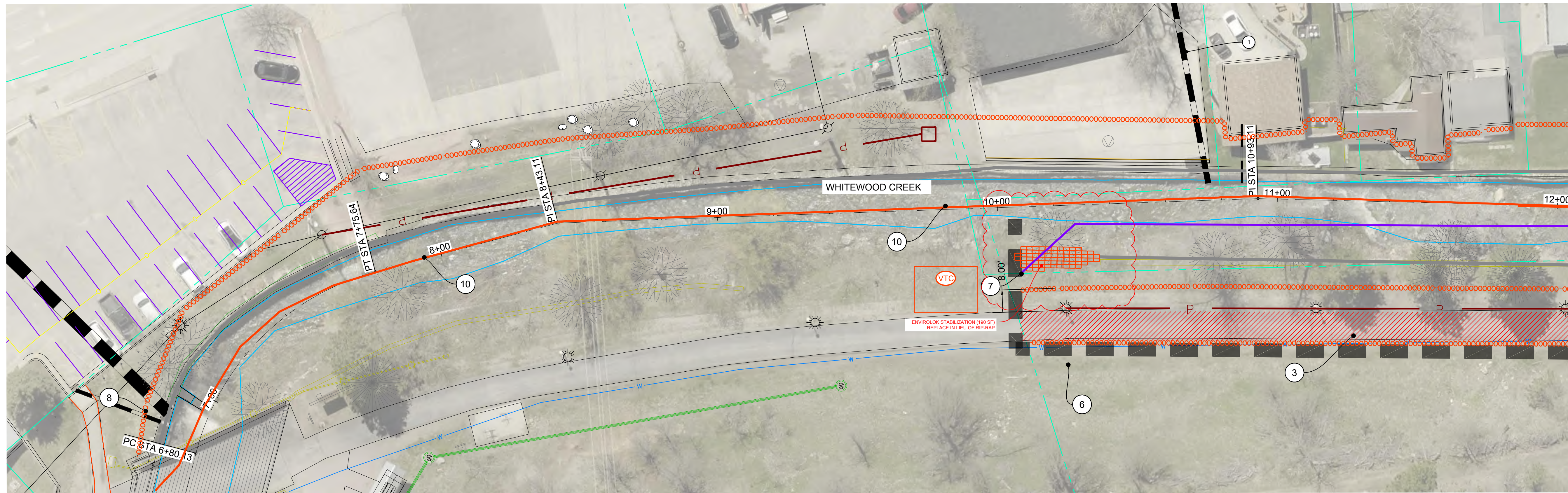
ISSUE BLOCK:

NO	ISSUE TYPE	ISSUE DATE
	65% PRELIM	12/30/2022
	100% CD	5/18/2023
	TDG RFI #1	11/08/2023

MANAGEMENT:  
 PROJECT NO: 20-096.1  
 DRAWN BY: NR  
 DESIGNED BY: BMK  
 CHECKED BY: MT  
 SHEET TITLE:

SITE 2A AND 2B  
 EROSION CONTROL PLAN

SHEET IDENTIFICATION:  
**C-404R**



- 1 STA. 6+76.30 @ 13.65' L  
- BEGIN 2B WALL- SEE STRUCTURAL
- 2 STA. 7+63.1, STA. 8+58.8 AND 9+40.5  
REMOVE EXISTING POWER POLES  
COORDINATE WITH BLACK HILLS  
ENERGY
- 3 NEW ELECTRIC JUNCTION BOX  
STA. 1+29.56 @ 18.5' L

- 4 REFERENCE ALL ELECTRIC TO SECTION  
800 SHEETS
- 5 STA 10+76.2 L TO 13+29.1 L  
SOD DISTURBED AREA SEE LANDSCAPE  
SPECIFICATIONS
- 6 STA 9+94.1 @ 26.1' L TO 10+76.1 @ 22.1'  
INSTALL 130 SY OF PCC CONCRETE  
DRIVE PAVEMENT 2/C-700 DOWEL INTO  
EXISTING PAVEMENT PER DETAIL  
1/C-706 INSTALL 113 LF OF 24" TALL  
C-WALL 1/C-701

- 7 STB. 1+62.0 @ 11.7' L  
CONSTRUCT 19 SF OF PCC SIDEWALK  
SEE DETAIL 2/C-700
- 8 BEGIN 2A WALL  
STA 10+36.01 @ 16.2' R (+/-)
- 9 STA 6+80.0 L TO 10+76.2 L (473 SY)  
STA 10+05.8 R TO 12+69.8 R (868 SY)  
SEED, FERTILIZE AND MULCH  
SEE LANDSCAPE SPECIFICATIONS

- 10 SEED, FERTILIZE, & MULCH PER  
LANDSCAPE SPECS
- 11 2" ELECTRICAL CONDUIT  
STA. 10+23.3 TO STA. 12+00 - 175 LF  
PLACE SALVAGED TOPSOIL (145 SY)
- 12 STA. 10+75.5  
INSTALL 10 LF OF 24" HDPE  
SEE DETAIL 4/C-701

- 13 STA. 10+36.01 R  
CLASS C RIP RAP 8" X 28" DEPTH 3.5'  
SEE DETAIL 3/C-701
- 14 STA. 10+57.58 L  
8" PVC PIPE PROTECT IN PLACE
- 15 REPLANT REMOVED TREES  
COORDINATE WITH LANDSCAPE
- 16 INSTALL 2'X3' TYPE B INLET W/ 22 LF OF  
12" HDPE

- 17 INSTALL CONCRETE WEIR (INSET F)
- 18 INSTALL 10 LF OF 54" HDPE AND 10 LF  
OF 16" HDPE

**LEGEND**

- SOD PER LANDSCAPE PLANS
- SEED, FERTILIZE AND MULCH (NON IRRIGATED) PER LANDSCAPE PLANS
- ASPHALT
- CONCRETE

SITE 2A/B



Albertson Engineering Inc.  
3202 W. MAIN, SUITE C  
RAPID CITY, SD 57702  
605.343.9606

CONSULTANT  
**TDG**  
Towey Design Group  
475 Villa Drive, Suite #3  
Box Elder, SD 57719  
605.600.3758

PROJECT IDEN:  
WHITEWOOD  
CREEK  
RESTORATION  
BID PACKAGE 1  
SITES 1C, 2A, 2B,  
3A, 3B

FEMA PROJECT NO. 123108  
DEADWOOD, SOUTH DAKOTA

ISSUE BLOCK:

NO	ISSUE TYPE	ISSUE DATE
	65% PRELIM	12/30/2022
	100% CD	5/18/2023
	TDG RFI #1	11/08/2023

MANAGEMENT:  
PROJECT NO: 20-096.1  
DRAWN BY: NR  
DESIGNED BY: BMK  
CHECKED BY: MT  
SHEET TITLE:

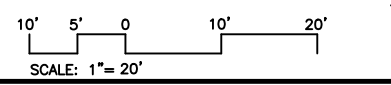
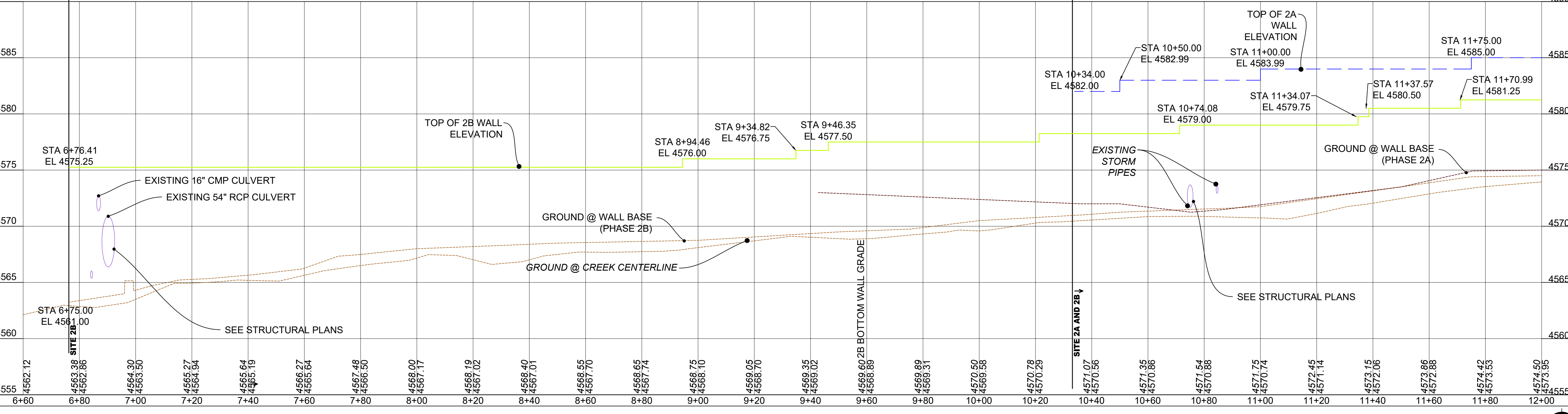
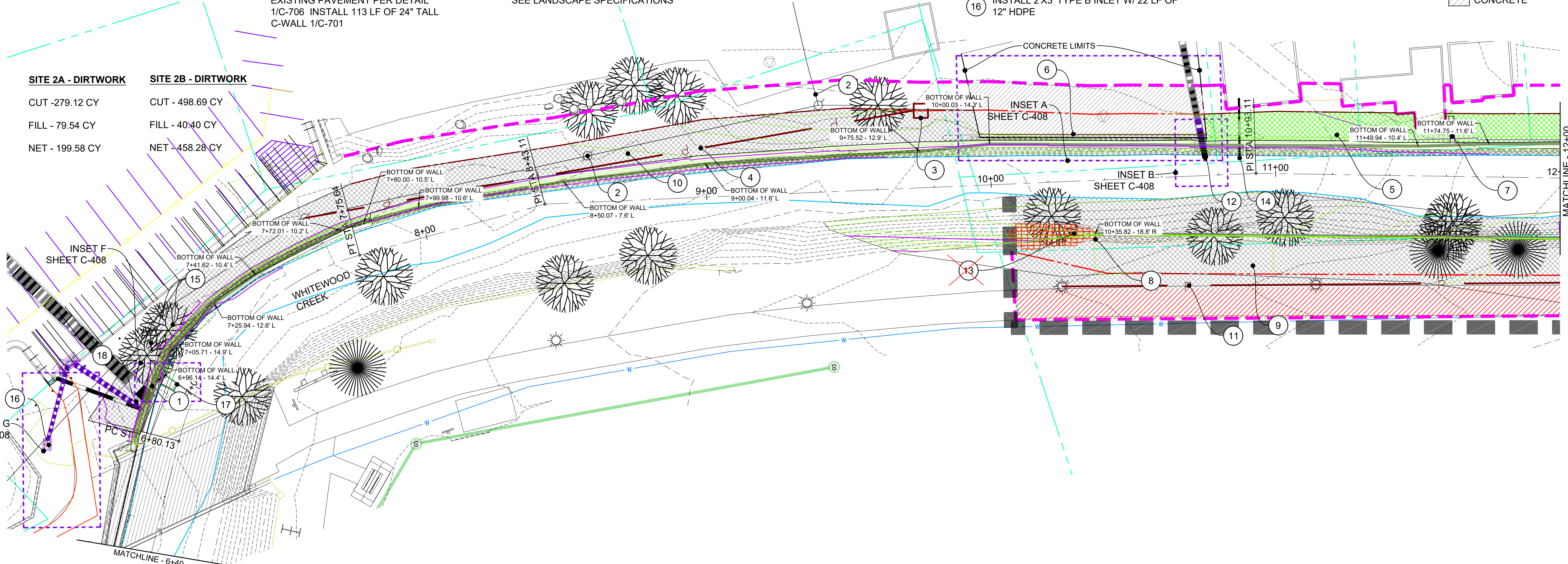
SITE 2A AND 2B  
PLAN AND  
PROFILE  
6+80-12+00

SHEET IDENTIFICATION:  
**C-406R**

C

B

A



- 1 STA 10+76.2 L TO 13+29.1 L  
SOD DISTURBED AREA COORDINATE WITH  
LANDSCAPE
- 2 END 2A WALL - SEE STRUCTURAL  
STA 12+38.21 @ 17.8' R (+/-)
- 3 END 2B WALL - SEE STRUCTURAL  
STA 17+49.97 @ 3.6' L (+/-)
- 4 STA 10+05.8 R TO 12+69.8 R  
SEED, FERTILIZE AND MULCH DISTURBED  
AREA (868 SY)  
PER LANDSCAPE SPECIFICATIONS
- 5 STA. 13+29.3 L (+/-) TO 14+40.3 L (+/-)  
CONSTRUCT 127 SY OF GRAVEL DRIVE  
SEE DETAIL 2/C-700
- 6 STA 14+40.5 L TO 17+06.5 L  
SOD DISTURBED AREA PER LANDSCAPE  
PLANS
- 7 STA 16+91.8 @ 14.5' L (+/-)  
CONSTRUCT CONCRETE PAD (106 SF)  
SEE DETAIL 2/C-700  
SEE INSET E C-408
- 8 STA 17+25.3 @ 17.5' L (+/-)  
COORDINATE WITH LANDOWNER FOR ON  
SITE STAGING LOCATION UNTIL AREA CAN  
BE RESTORED (727 SF)
- 9 STA. 14+12.0  
INSTALL 10 LF OF 24" HDPE  
SEE DETAIL 4/C-701
- 10 STA. 10+36.01  
CLASS C RIP RAP 20' X 30' DEPTH = 3.5'  
SEE DETAIL 3/C-701
- 11 RESET FENCE (26.2 LF)

**LEGEND**

- SOD PER LANDSCAPE PLANS
- SEED, FERTILIZE AND MULCH (NON IRRIGATED) PER LANDSCAPE PLANS
- ASPHALT



Albertson Engineering Inc.  
3202 W. MAIN, SUITE C  
RAPID CITY, SD 57702  
605.343.9606

CONSULTANT  
**TDG**  
Towey Design Group  
475 Villa Drive, Suite #3  
Box Elder, SD 57719  
605.600.3758

PROJECT IDEN:  
WHITEWOOD  
CREEK  
RESTORATION  
BID PACKAGE 1  
SITES 1C, 2A, 2B,  
3A, 3B  
FEMA PROJECT NO. 123108  
DEADWOOD, SOUTH DAKOTA

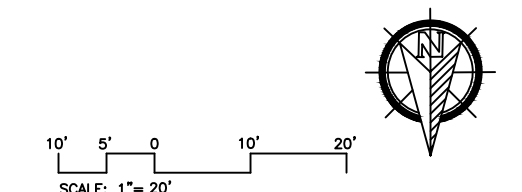
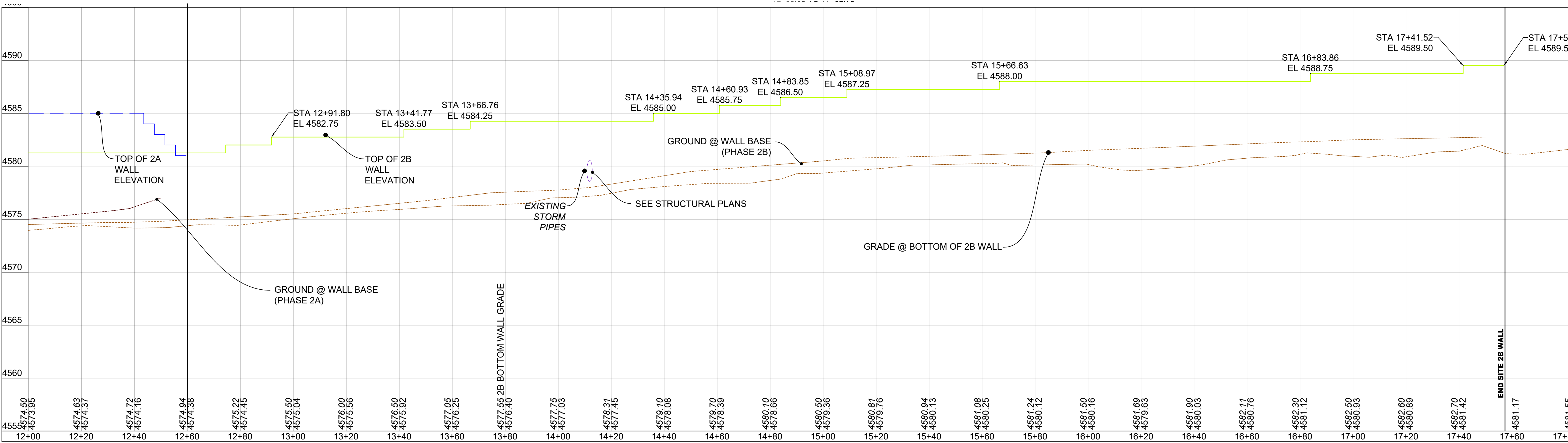
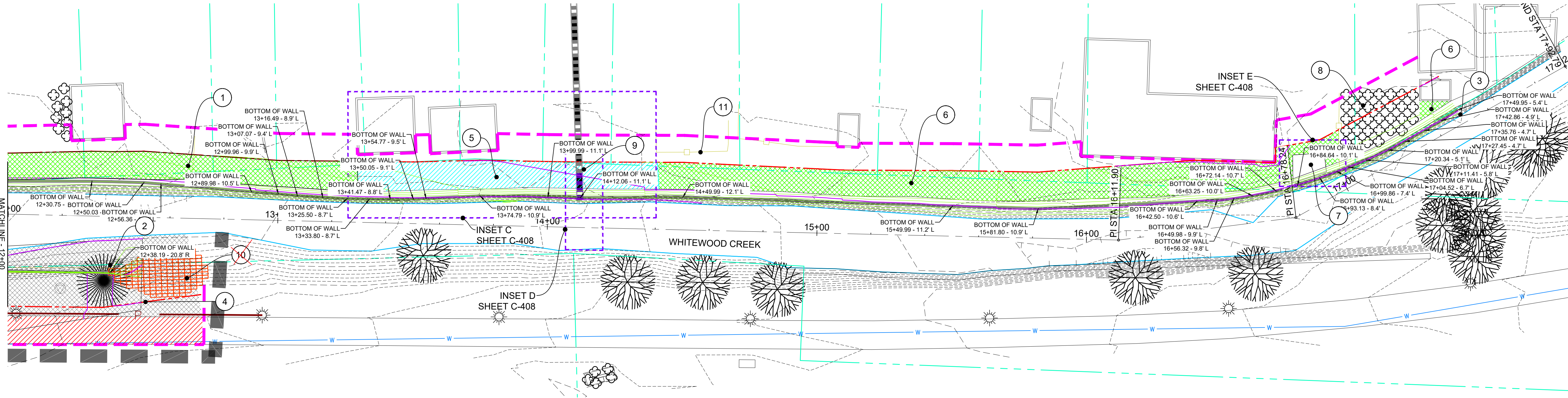
ISSUE BLOCK:

NO	ISSUE TYPE	ISSUE DATE
	65% PRELIM	12/30/2022
	100% CD	5/18/2023
	TDG RFI #1	11/08/2023

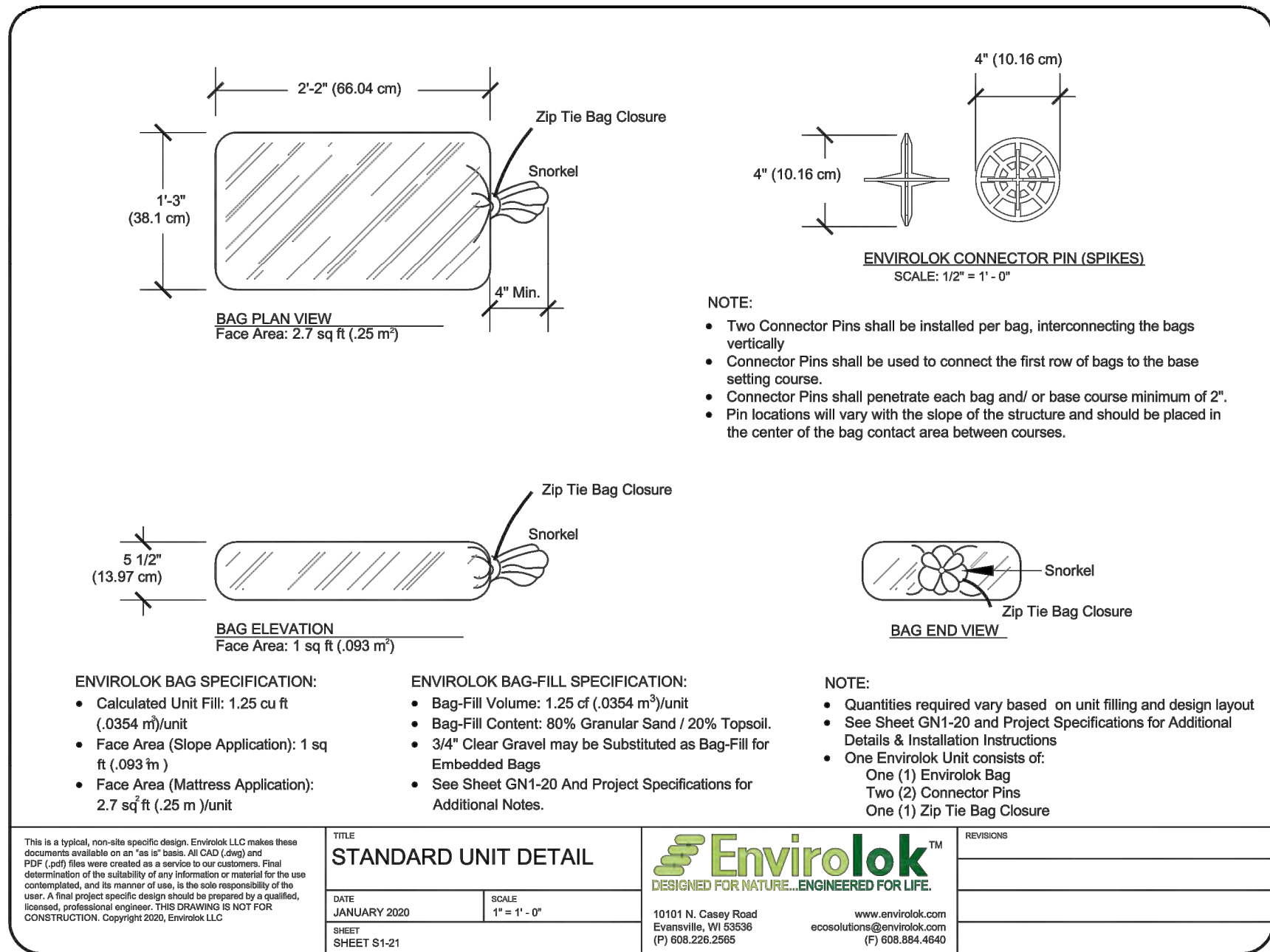
MANAGEMENT:  
PROJECT NO: 20-096.1  
DRAWN BY: NR  
DESIGNED BY: BMK  
CHECKED BY: MT  
SHEET TITLE:

SITE 2A AND 2B  
PLAN AND  
PROFILE 12+00-  
18+00  
SHEET IDENTIFICATION:

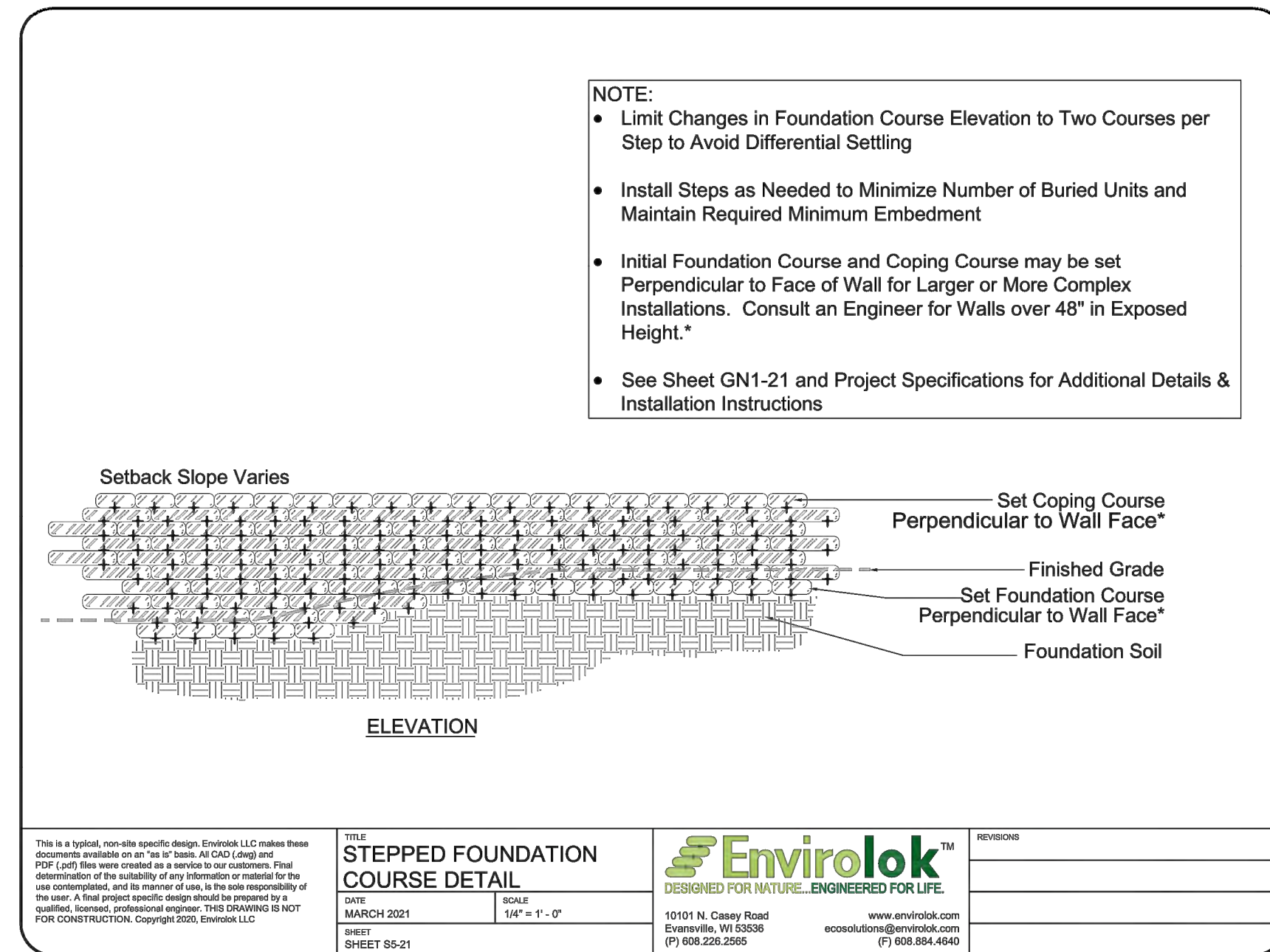
**C-407R**



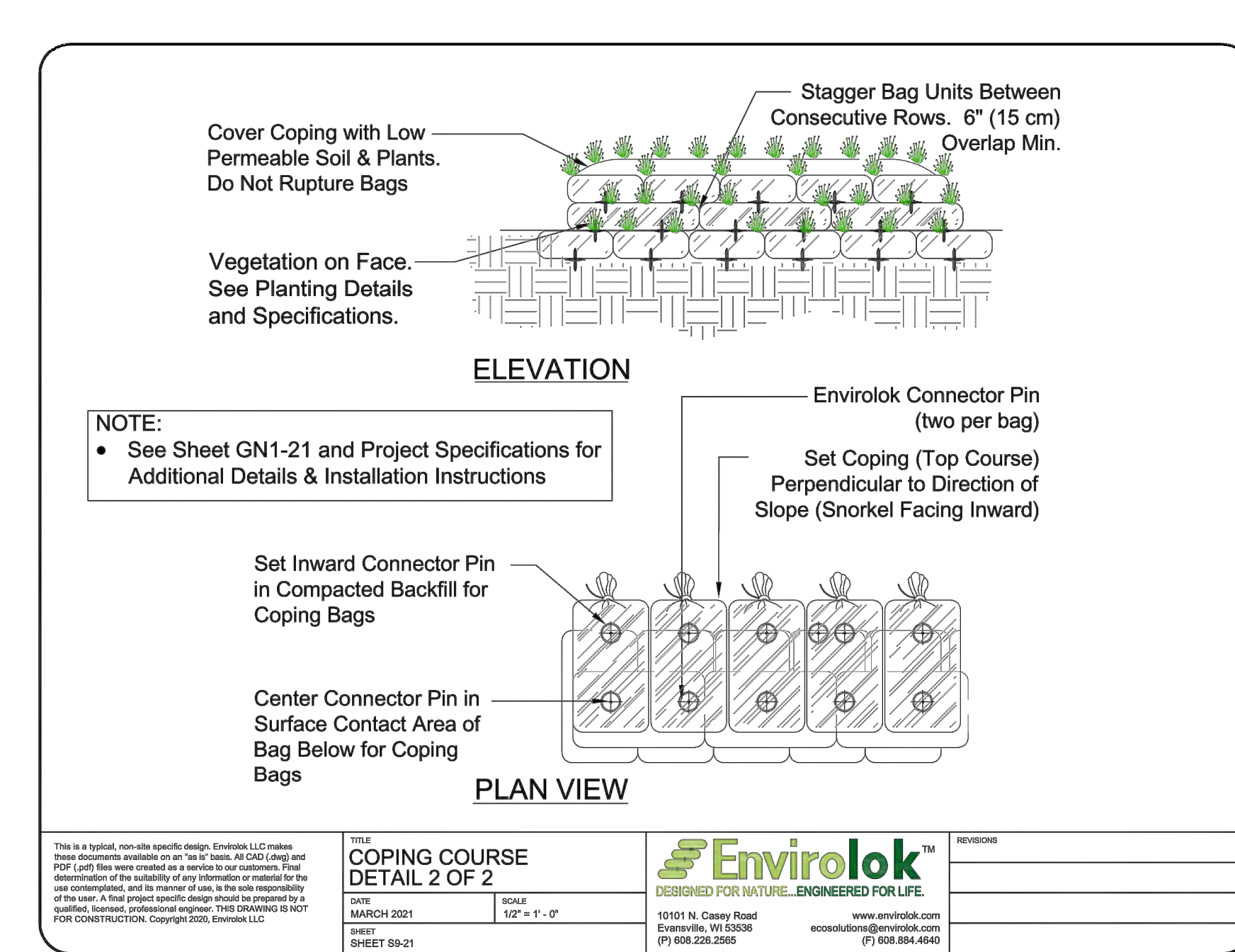
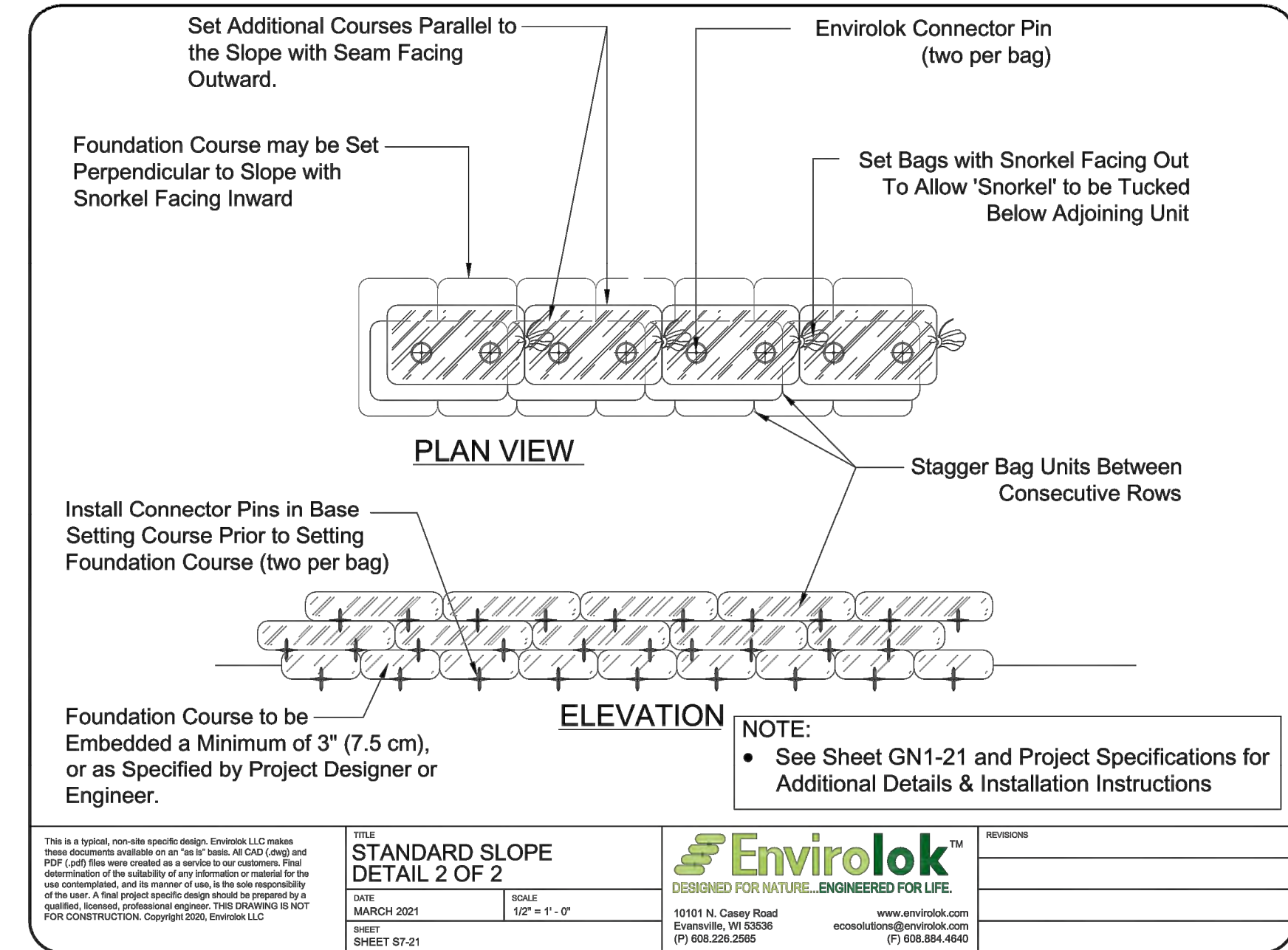
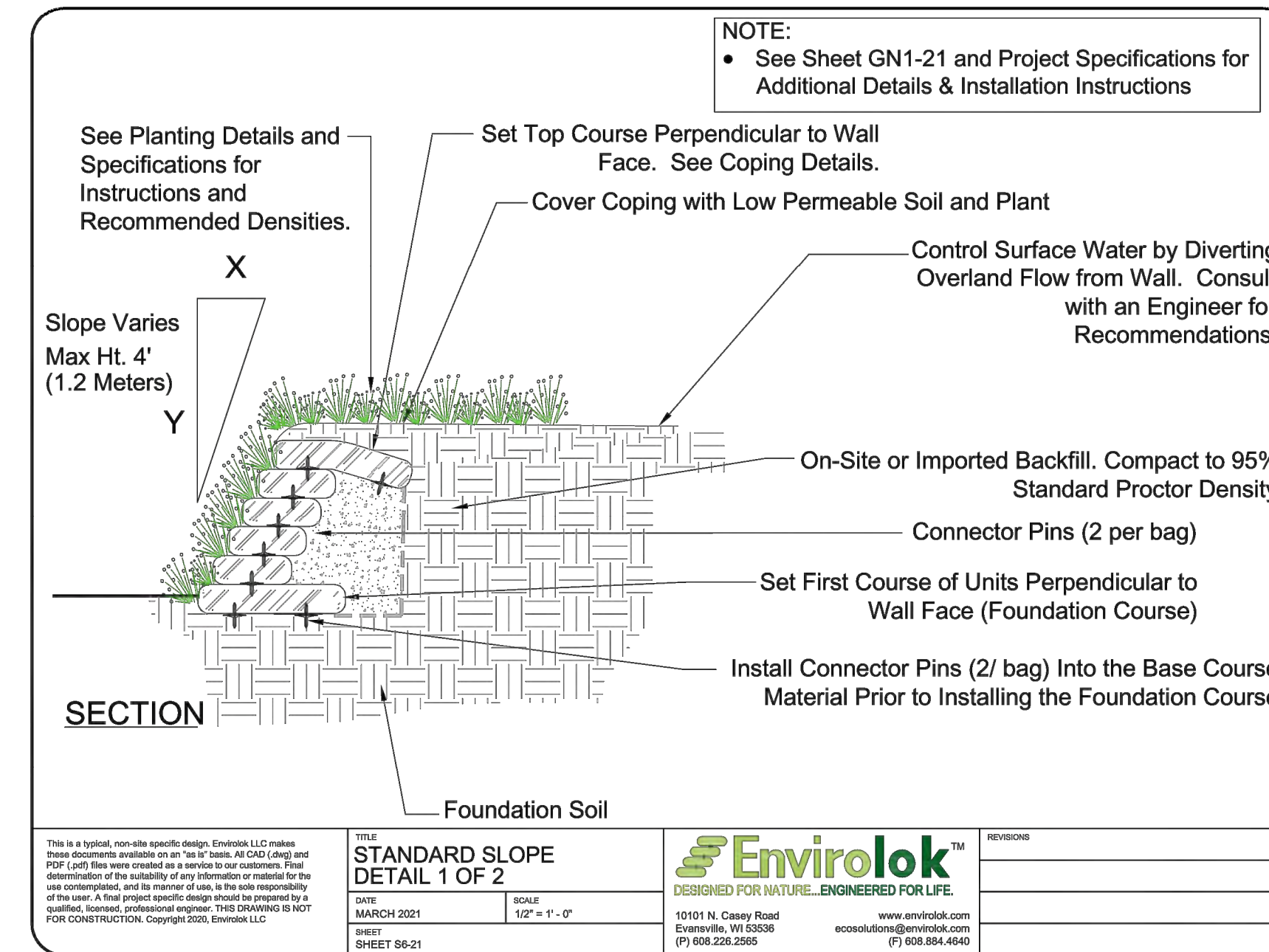
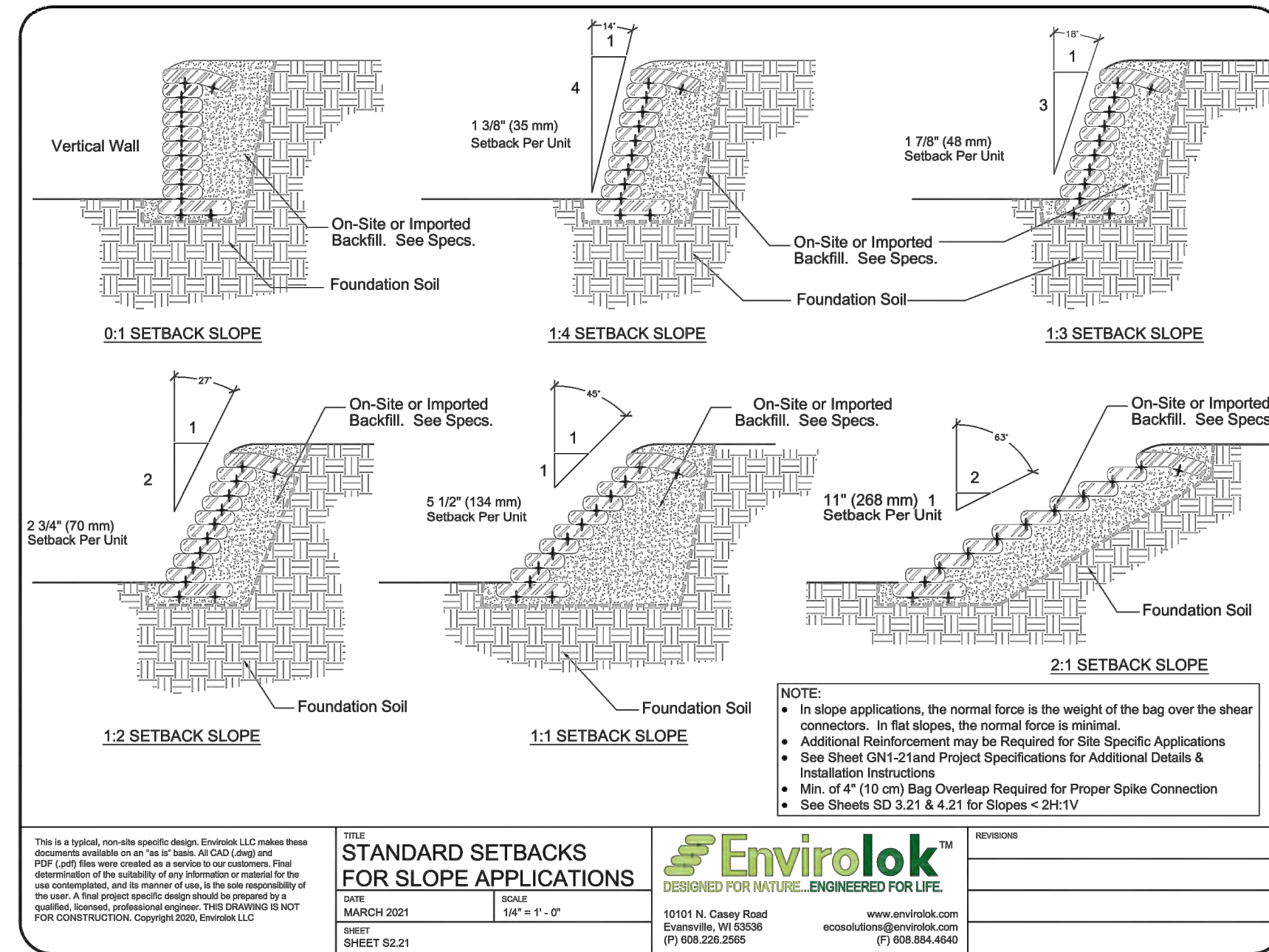
C



B



A



Albertson Engineering Inc.  
3202 W. MAIN, SUITE C  
RAPID CITY, SD 57702  
605.343.9606

CONSULTANT

Towey Design Group  
475 Villa Drive, Suite #3  
Box Elder, SD 57719  
605.600.3758

PROJECT IDEN:  
WHITEWOOD CREEK RESTORATION  
BID PACKAGE 1  
SITES 1C, 2A, 2B, 3A, 3B

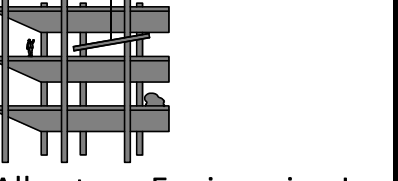
FEMA PROJECT NO. 123108  
DEADWOOD, SOUTH DAKOTA

ISSUE BLOCK:		
NO	ISSUE TYPE	ISSUE DATE
1	RFI #1	09/25/2023

MANAGEMENT:  
PROJECT NO: 20-096.1  
DRAWN BY: NR  
DESIGNED BY: BMK  
CHECKED BY: MT  
SHEET TITLE:

ENVIROLOK DETAILS

SHEET IDENTIFICATION:  
**C-707**



Albertson Engineering Inc.  
3202 W. MAIN, SUITE C  
RAPID CITY, SD 57702  
605.343.9606

CONSULTANT

# TDG

Towey Design Group  
475 Villa Drive, Suite #3  
Box Elder, SD 57719  
605.600.3758

PROJECT IDEN:

WHITEWOOD  
CREEK  
RESTORATION

BID PACKAGE 1  
SITES 1C, 2A, 2B,  
3A, 3B

FEMA PROJECT NO. 123108

DEADWOOD, SOUTH DAKOTA

ISSUE BLOCK:

NO	ISSUE TYPE	ISSUE DATE
1	RFI #1	09/25/2023

MANAGEMENT:

PROJECT NO: 20-096.1

DRAWN BY: NR

DESIGNED BY: BMK

CHECKED BY: MT

SHEET TITLE:

ENVIROLOK DETAILS

SHEET IDENTIFICATION:

# C-708

