



PLANNED UNIT DEVELOPMENT (PUD)

the RIDGE Development, Deadwood, SD

PUD Boundary includes Phases 1, 1A, 1B, 2 & 3 – see attached map

All areas within the PUD Boundary are requesting the following:

- SETBACKS:
 - Due to extreme topography, it is requested that the following setbacks are allowed, to be only utilized by the HOA/Architectural Review Committee when necessary (the Covenants provide more stringent requirements for setbacks without an exception)

Requested Setbacks for PUD
Front (5) feet
Side (5) feet
Rear (5) feet

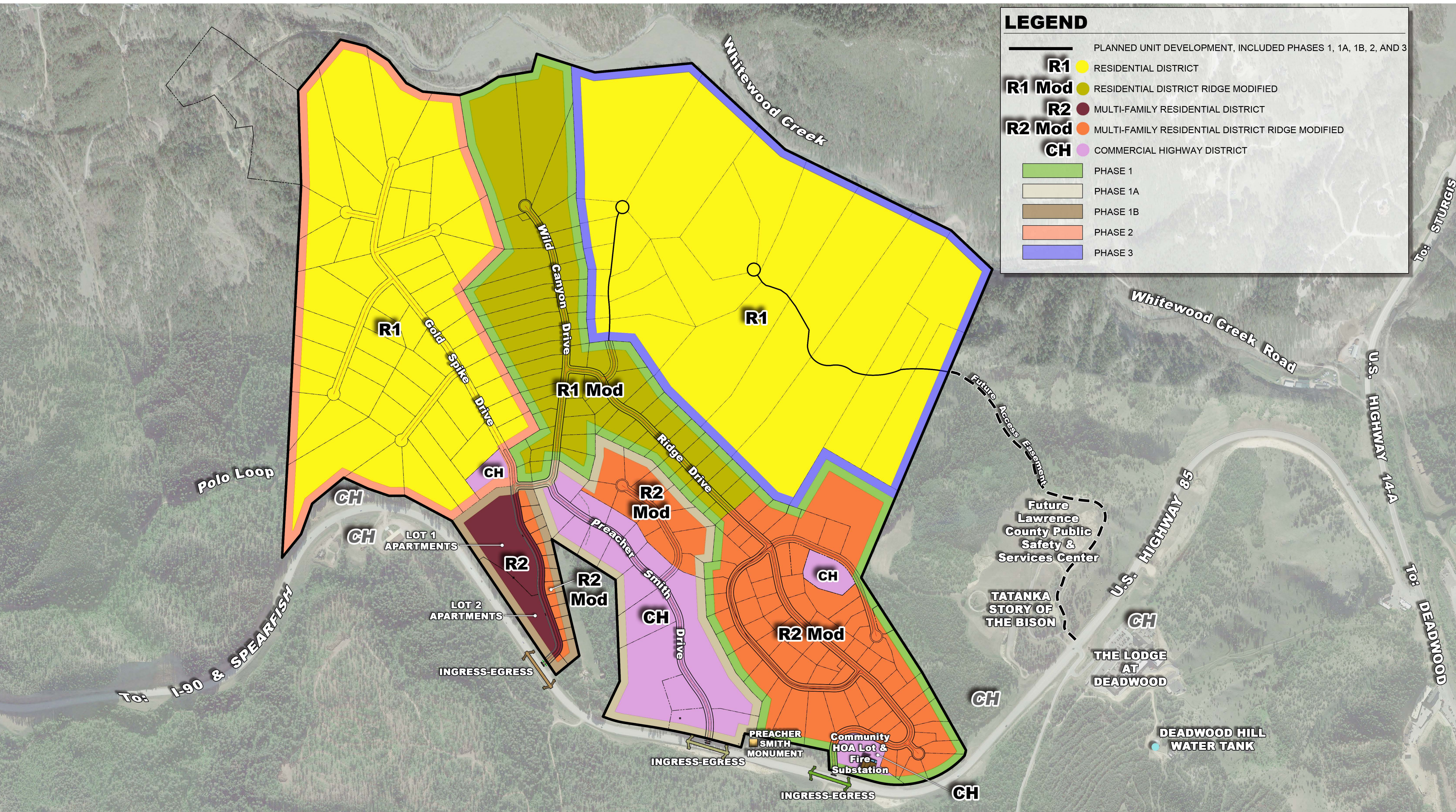
- PARKING:
 - Parking requirements are requested to be reduced by 20%

City of Deadwood Zoning Districts included within the PUD Boundary:

- 1. R1 – Residential District**
- 2. R1 Mod – Residential District RIDGE Modified**
 - Short Term Rentals Allowed
- 3. R2 – Multi-Family Residential District**
- 4. R2 Mod– Multi-Family Residential District Modified**
 - Short Term Rentals Allowed
- 5. CH – Commercial Highway District**

LEGEND

- PLANNED UNIT DEVELOPMENT, INCLUDED PHASES 1, 1A, 1B, 2, AND 3
- R1** RESIDENTIAL DISTRICT
- R1 Mod** RESIDENTIAL DISTRICT RIDGE MODIFIED
- R2** MULTI-FAMILY RESIDENTIAL DISTRICT
- R2 Mod** MULTI-FAMILY RESIDENTIAL DISTRICT RIDGE MODIFIED
- CH** COMMERCIAL HIGHWAY DISTRICT
- PHASE 1
- PHASE 1A
- PHASE 1B
- PHASE 2
- PHASE 3



the RIDGE Development PUD - PLANNED UNIT DEVELOPMENT MAP

DEADWOOD, SOUTH DAKOTA

