

Unit Features

Ultimate Double Hung Magnum: UWDHM

Ultimate Single Hung Magnum: UWSHM

Ultimate Double Hung Magnum Picture: UWDHMP

Ultimate Double Hung Magnum Transom: UWDHMTR

Operating Hardware:

- Sash lock and keeper: surface mounted, open style crescent cam lock. Two locks on glass of 36" (914) and wider. Color: Satin Taupe.
 - Optional colors: Bronze, White, Brass, Antique Brass, Satin Chrome, Satin Nickel, and Oil Rubbed Bronze.
- Balance System: Spiral balance system, designed to balance sash from 10 lbs. to 130 lbs.
- Pivot pins two per sash made of stainless steel are used. Clutches two per sash designed to receive the pivot pin and are designed to support sash weight up to 130 lbs.
- Tilt latch provided for easy tilting of the top sash inward, located at check rail.
- Optional Sash lift: same colors as offered in locks.
- Optional window opening control device field applied.

Optional Glass: WUDHM - 7/8" (22) glazing, WUDHMP - 1" (25) glazing only

- Tripane Low E1 outer piece and Low E1 Argon inner piece
- Tripane Low E1 outer piece and Low E1 Krypton-Argon inner piece
- Tripane Low E2 outer piece and Low E2 Argon inner piece
- Tripane Low E2 outer piece and Low E2 Krypton-Argon inner piece
- Tripane Low E3 outer piece and Low E1 Argon inner piece
- Tripane Low E3 outer piece and Low E1 Krypton-Argon inner piece

CE Optional Glazing:

- Glazing method: Insulating
- Glazing seal: Silicone glazed
- Standard glass is insulating Low E2 Argon or air
- Optional dual glazing available: Low E1 Argon or air, Low E3 Argon or air, Low E2/ERS Argon or air, Low E3/ERS Argon or air, clear, laminated clear and tints. tempered, sandblasted
- Optional Tripane glass types for WUDHM - 7/8" (22) glazing, WUDHMP - 1" (25) glazing only: Low E1/E1 Argon or Krypton-Argon, Low E2/E2 Argon or Krypton-Argon, Low E3/E1 Argon or Krypton-Argon
- Glass panes available in 3, 4, or 6 mm thicknesses
- Glazing will be altitude adjusted for higher elevations, Argon, Argon-Krypton, and Krypton gas not included

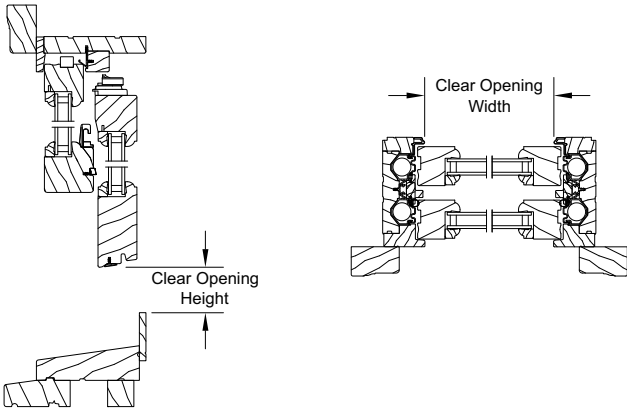
CE Mulling Options:

- Muller assemblies up to 70 3/4" (1797) x 80 3/8" (2042) as 1H x multi-width
- Muller assemblies with 1" (25) LVL or 3/8" (10) aluminum mull reinforcement up to 124 7/8" (3172) x 100 3/8" (2550) as a multi-wide or multi-high assembly

Egress and Vent Openings

Not to Scale

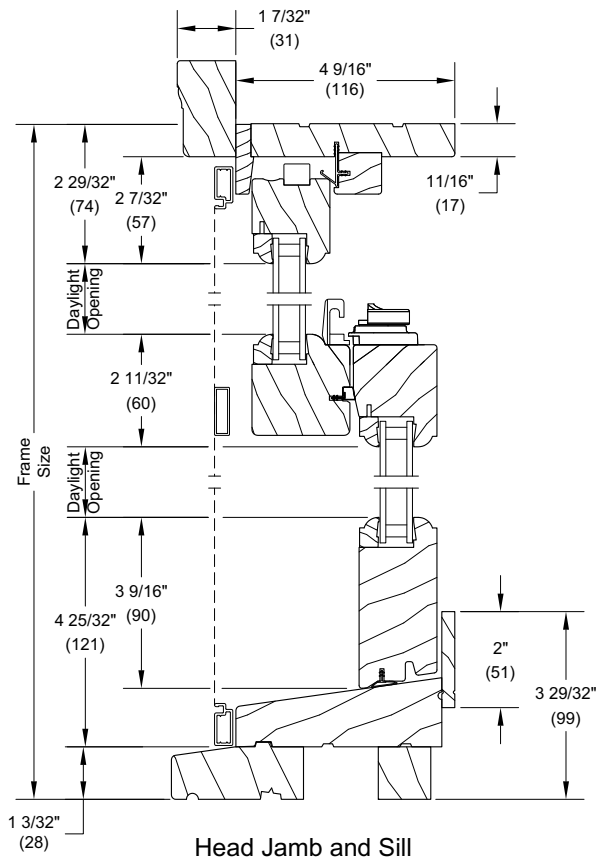
| Egress Conversions | | |
|--|--|----------------|
| Glass Size Width = 1 7/8" (48) = Egress Width Rough Opening Width - 4 1/2" (114) = Egress Width | | |
| Glass Size Height | Rough Opening Height | Egress Height |
| 20" (508) to less than 28" (711) | 49 1/2" (1257) to less than 65 1/2" (1664) | 16 1/2" (419) |
| 28" (711) to less than 38" (965) | 65 1/2" (1664) to less than 85 1/2" (2172) | 24 1/2" (622) |
| 38" (965) to less than 49" (1245) | 85 1/2" (2172) to less than 107 1/2" (2731) | 34 1/2" (876) |
| 49" (1245) to less than 60" (1524) | 107 1/2" (2731) to less than 129 1/2" (3289) | 45 1/2" (1156) |



Section Details: Operating

Scale: 3" = 1' 0"

Double Hung



Single Hung

