

Sign #'s 1 and 5 do not  
require permits. - TM

INN CODE: RAPFP

FOUR POINTS BY SHERATON  
DEADWOOD, SD 57732

PROPOSED SIGNS:

- ① 1'-4" X 1'-4" ENTRY PLAQUE
- ② 20' PIN-MOUNT LETTER SET
- ③ 20' PIN-MOUNT LETTER SET
- ④ 4'-9 1/4" X 6'-2" MONUMENT  
AT 8'-6" OAH
- ⑤ 3'-3" X 1'-10" PARKING NOTICE  
AT 5'-3" OAH

APPROVAL BOX - PLEASE INITIAL

CUSTOMER APPROVAL

Date

**NOTE:** Elevation drawings are for customer approval only, drawings are not to be used as any installation guide, all dimensions must be verified before installation.

Customer:  
**FOUR POINTS BY SHERATON**

Date:  
**19JAN21**

Prepared By:  
**KH/SC**

Note: Color output may not be exact when viewing or printing this drawing. All colors used are PMS or the closest CMYK equivalent. If these colors are incorrect, please provide the correct PMS match and a revision to this drawing will be made.

Location:  
**DEADWOOD, SD**

File Name:  
**264845 - R5 - DEADWOOD, SD**

Eng:  
-

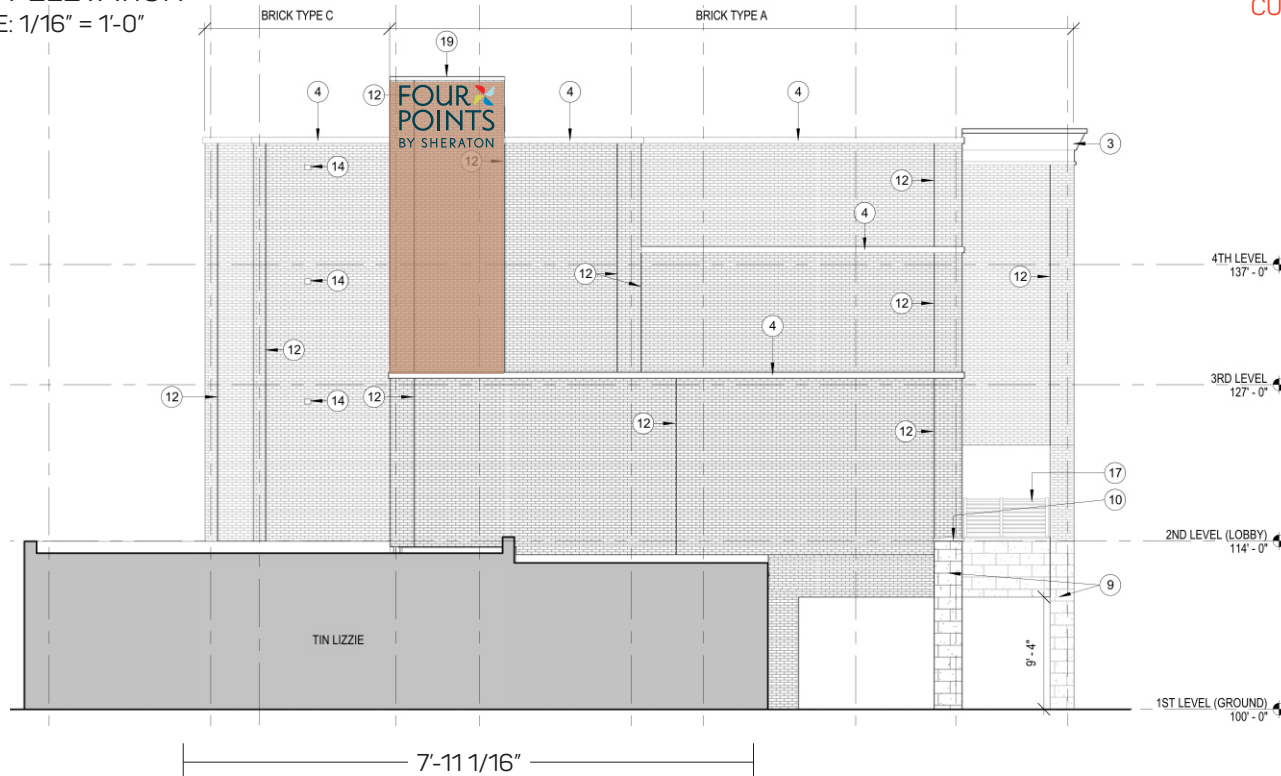
**persona**  
SIGNS | LIGHTING | IMAGE

DISTRIBUTED BY SIGN UP COMPANY  
700 21st Street Southwest  
PO Box 210  
Watertown, SD 57201-0210  
1.800.843.9888 • www.personasigns.com

2

## WEST ELEVATION

SCALE: 1/16" = 1'-0"

CHANNEL LETTERS SHOWN ON EXISTING WALL COLOR OR AS NOTED ON ELEVATIONS.  
CUSTOMER TO VERIFY WALL COLOR PRIOR TO PRODUCTION

PIN-MOUNT LETTER DETAIL

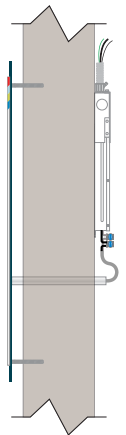
SCALE: 3/8" = 1'-0"

.125" FLAT CUT ALUMINUM  
STUD MOUNT  
LETTERS PAINTED PMS 547 C DARK WASH  
PINWHEEL PAINTED:  
- PMS 1788 C RED  
- PMS 636 C LIGHT BLUE  
- PMS 7461 C BLUE  
- PMS 584 C GREEN

TETRA CONTOUR LIGHTING  
CONNECTED WITH CLEAR CLIPS:  
CLEAR CONTOUR STRIP ON COPY  
PERIMETER CONTOUR WITH COLORED  
FILM TO MATCH "PETALS" ON LOGO

## NIGHT VIEW

FOUR  
POINTS  
BY SHERATON

PROFILE  
NTS

## APPROVAL BOX - PLEASE INITIAL

CUSTOMER APPROVAL

Date

**NOTE:** Elevation drawings are for customer approval only, drawings are not to be used as any installation guide, all dimensions must be verified before installation.

Customer:

FOUR POINTS BY SHERATON

Date:

01/22/21

Prepared By:

KH/CM/JS/SC/CM/KH

Note: Color output may not be exact when viewing or printing this drawing. All colors used are PMS or the closest CMYK equivalent. If these colors are incorrect, please provide the correct PMS match and a revision to this drawing will be made.

Location:

DEADWOOD, SD

File Name:

264845 - R5 - DEADWOOD, SD

Eng:

-

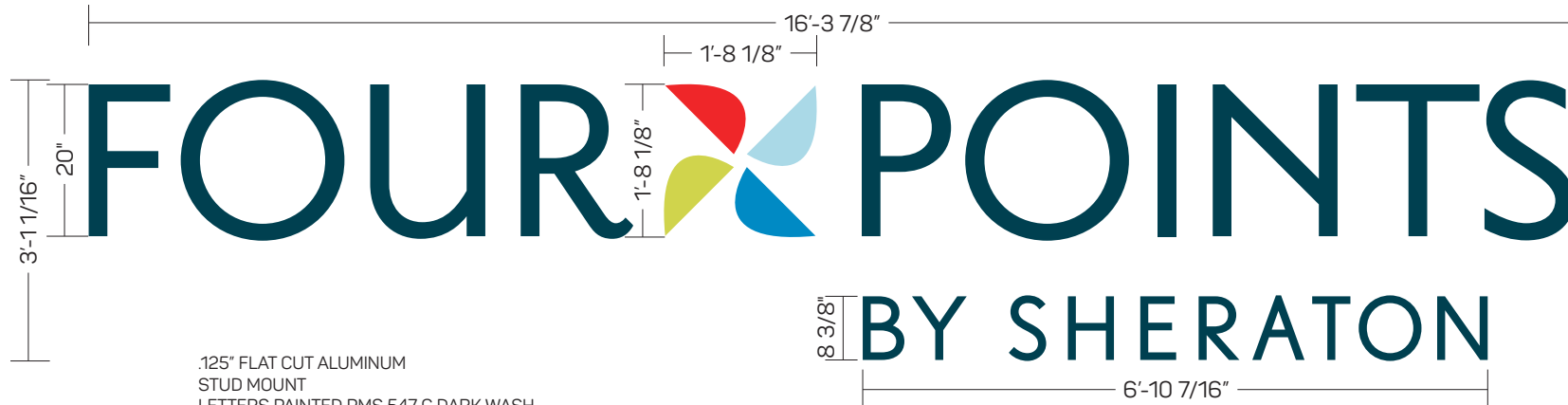
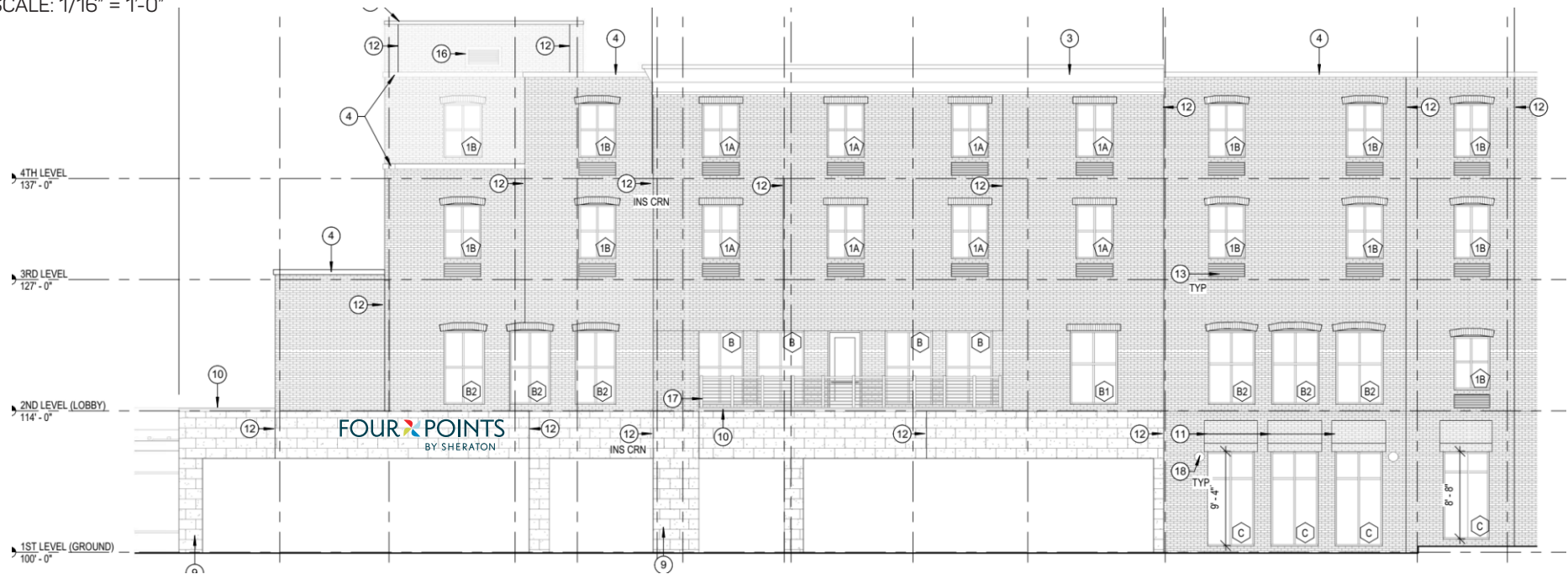
**persona**  
SIGNS | LIGHTING | IMAGE

DISTRIBUTED BY SIGN UP COMPANY  
700 21st Street Southwest  
PO Box 210  
Watertown, SD 57201-0210  
1.800.843.9888 • www.personasigns.com

3

## NORTH ELEVATION

SCALE: 1/16" = 1'-0"

CHANNEL LETTERS SHOWN ON EXISTING WALL COLOR OR AS NOTED ON ELEVATIONS.  
CUSTOMER TO VERIFY WALL COLOR PRIOR TO PRODUCTION

.125" FLAT CUT ALUMINUM  
STUD MOUNT  
LETTERS PAINTED PMS 547 C DARK WASH  
PINWHEEL PAINTED:  
- PMS 1788 C RED  
- PMS 636 C LIGHT BLUE  
- PMS 7461 C BLUE  
- PMS 584 C GREEN

PIN-MOUNT LETTER DETAIL  
SCALE: 1/2" = 1'-0"

PROFILE  
NTS

## APPROVAL BOX - PLEASE INITIAL

CUSTOMER APPROVAL

Date

**NOTE:** Elevation drawings are for customer approval only, drawings are not to be used as any installation guide, all dimensions must be verified before installation.

Customer:  
**FOUR POINTS BY SHERATON**

Date:  
**01/08/21**

Prepared By:  
**KH/CM**

Note: Color output may not be exact when viewing or printing this drawing. All colors used are PMS or the closest CMYK equivalent. If these colors are incorrect, please provide the correct PMS match and a revision to this drawing will be made.

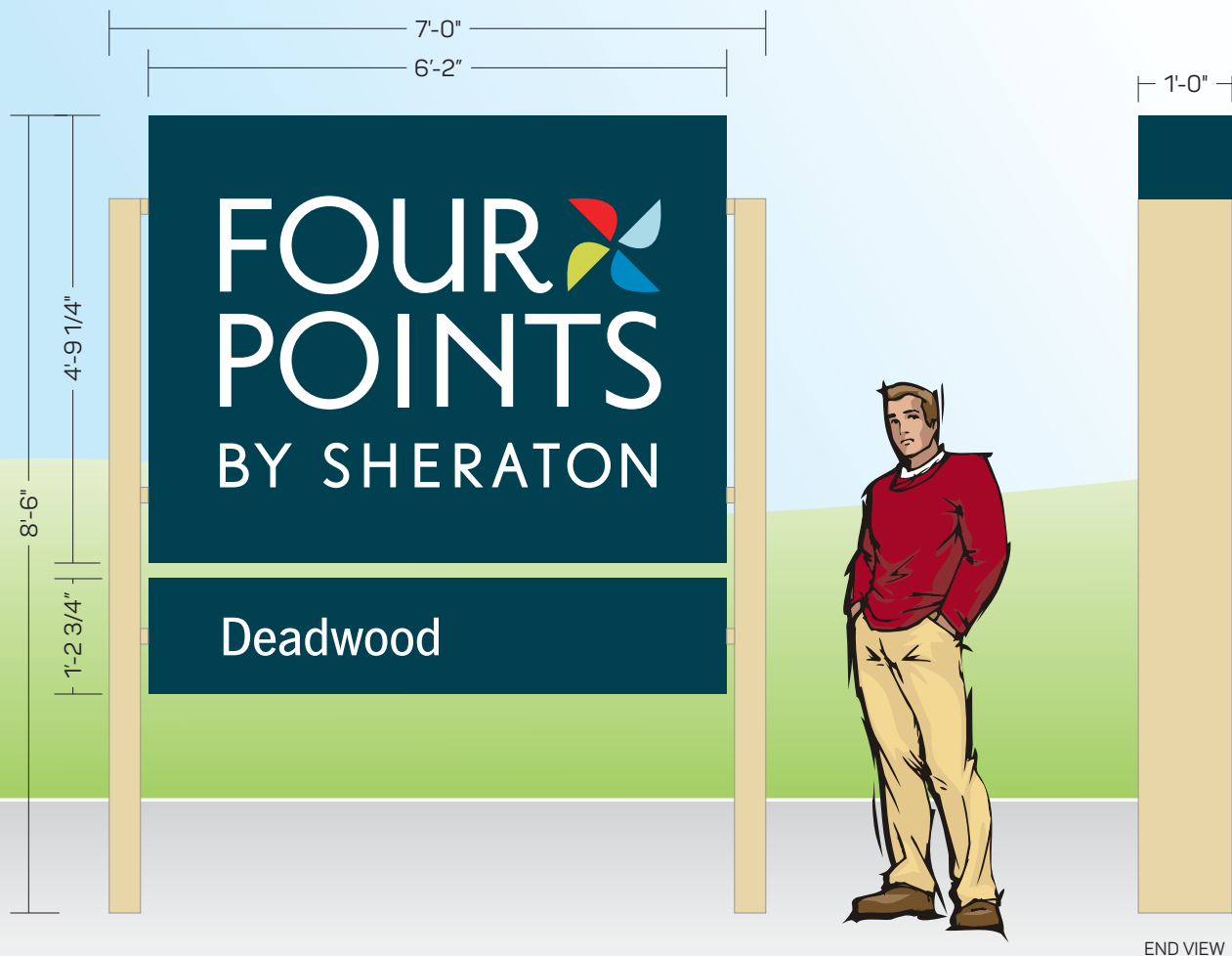
Location:  
**DEADWOOD, SD**

File Name:  
**264845 - R5 - DEADWOOD, SD**

Eng:  
-

**persona**  
SIGNS | LIGHTING | IMAGE

DISTRIBUTED BY SIGN UP COMPANY  
700 21st Street Southwest  
PO Box 210  
Watertown, SD 57201-0210  
1.800.843.9888 • www.personasigns.com



MONUMENT SIGN  
SCALE: 1/2" = 1'-0"

#### CABINETS:

.125" TH. AND 12" DEEP FABRICATED ALUMINUM CABINET

**\*\*NON-ILLUMINATED\*\***

#### CABINET COLOR:

PAINT CABINET ONE OF THE FOUR APPROVED CABINET COLORS. FOR COLOR STANDARDS AND PAINT REFERENCES SEE SHEET "INTRO 1". (NOTE: CABINETS AND FACES MUST BOTH BE SAME COLOR).

#### CABINET FACES:

.125" ROUTED ALUMINUM FACES WITH BACKED UP COPY

#### BY SHERATON LETTERS:

1/4" TH. TRANSPARENT ACRYLIC LETTERS WITH 3M SCOTCHCAL TRANSLUCENT WHITE FILM #3630-20 ON FIRST SURFACE.

#### PINWHEEL SYMBOL:

1/4" TH. CLEAR ACRYLIC FACES LAMINATED FIRST SURFACE EACH ELEMENT WITH CUSTOM SCOTCHCAL COLORS PER SHEET "INTRO 1".

#### APPROVAL BOX - PLEASE INITIAL

CUSTOMER APPROVAL

Date

**NOTE:** Elevation drawings are for customer approval only, drawings are not to be used as any installation guide, all dimensions must be verified before installation.

Customer: <b>FOUR POINTS BY SHERATON</b>	Date: <b>01/08/21</b>	Prepared By: <b>KH/CM</b>	<small>Note: Color output may not be exact when viewing or printing this drawing. All colors used are PMS or the closest CMYK equivalent. If these colors are incorrect, please provide the correct PMS match and a revision to this drawing will be made.</small>
Location: <b>DEADWOOD, SD</b>	File Name: <b>264845 - R5 - DEADWOOD, SD</b>	Eng: <b>-</b>	

**persona**  
SIGNS | LIGHTING | IMAGE

DISTRIBUTED BY SIGN UP COMPANY  
700 21st Street Southwest  
PO Box 210  
Watertown, SD 57201-0210  
1.800.843.9888 • www.personasigns.com