

"Rockeino" 

We would like to request a variance for this sign facing Main Street since it is above the 2nd story windows for the following reasons:

- It is the only logical placement without altering the historic architecture of the building.
- Included are 20 photos of current signs in Deadwood that show a precedent of signs that are above the 2nd story windows and it appears all of them are taller than 24 inches. 14 of those signs are within the boundaries of the Historic District.

*Hampton
Inn*

TEN LIZZIE





Holiday Inn
Express
2.5 miles

البار
FULL BAR

SPORTS
BOTTLES

BUD LIGHT
ADRIANO
Buckley

FULL BAR
ULTRA

GAMING
SPORTS

STOP

P



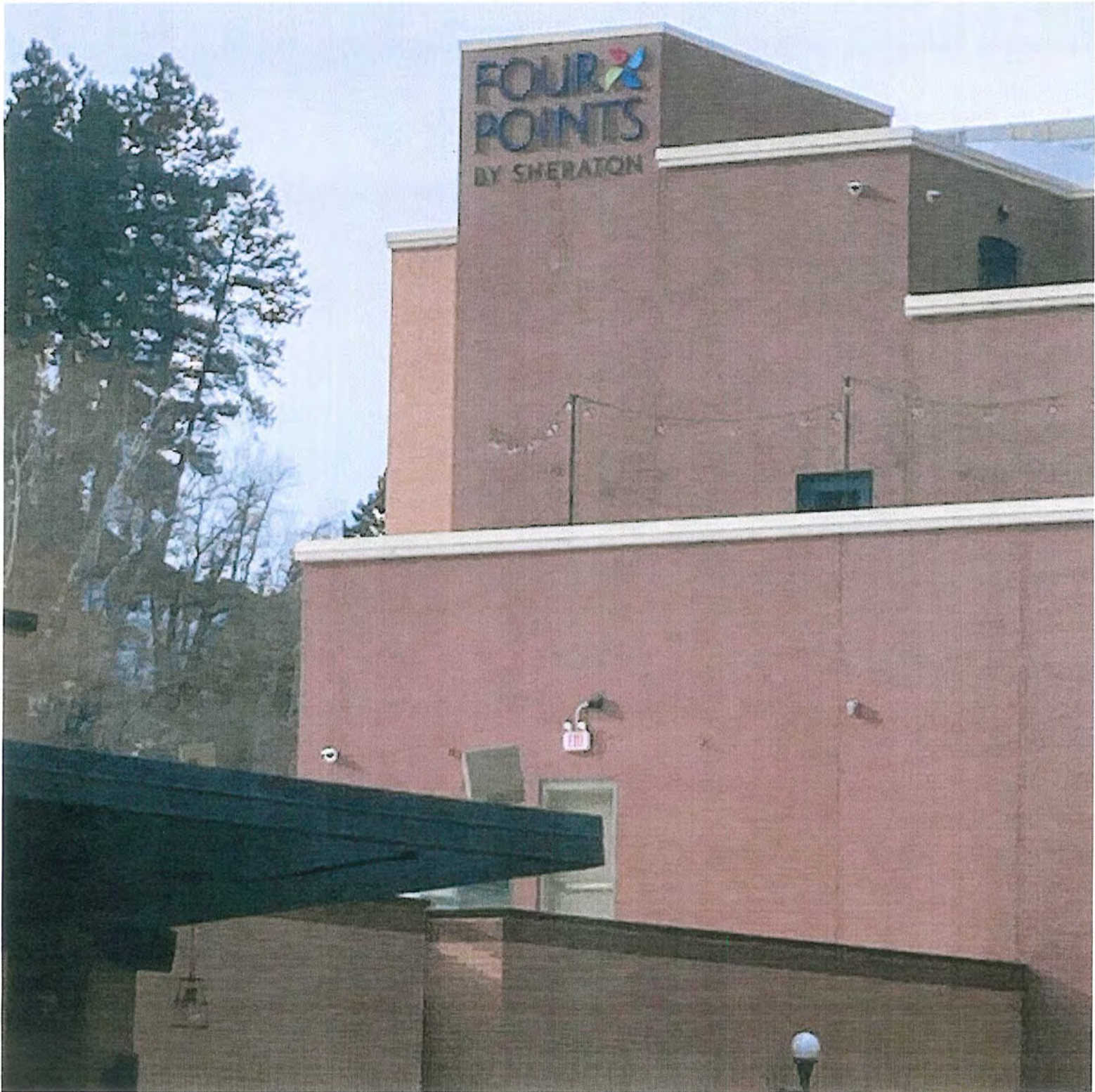
GREEN FRONT
THEATER

MINERAL PALACE

GEN
Theater

GEN
Steakhouse & Saloon









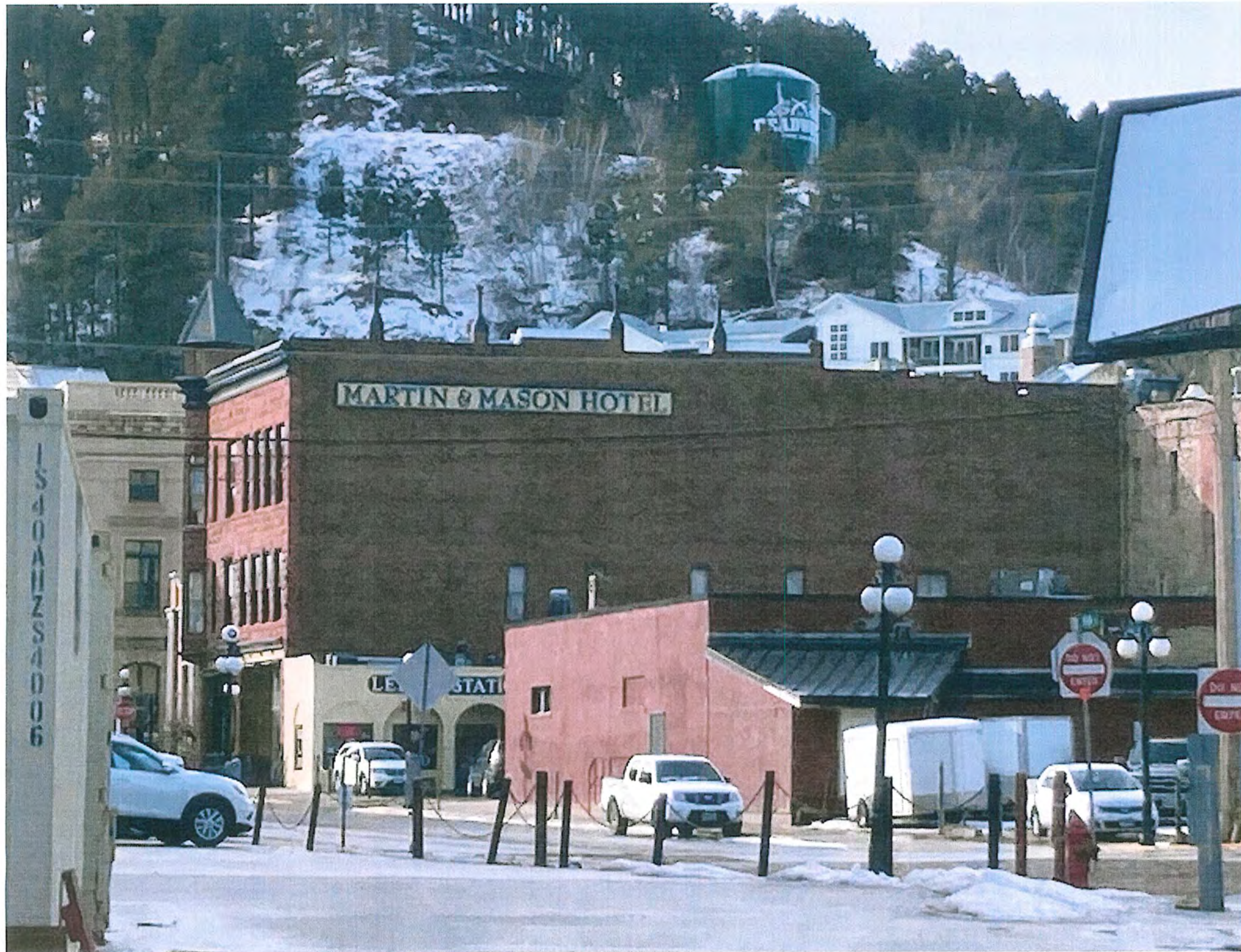


DEADWOOD MOUNTAIN GRAND



MINERAL PALACE HOTEL 95







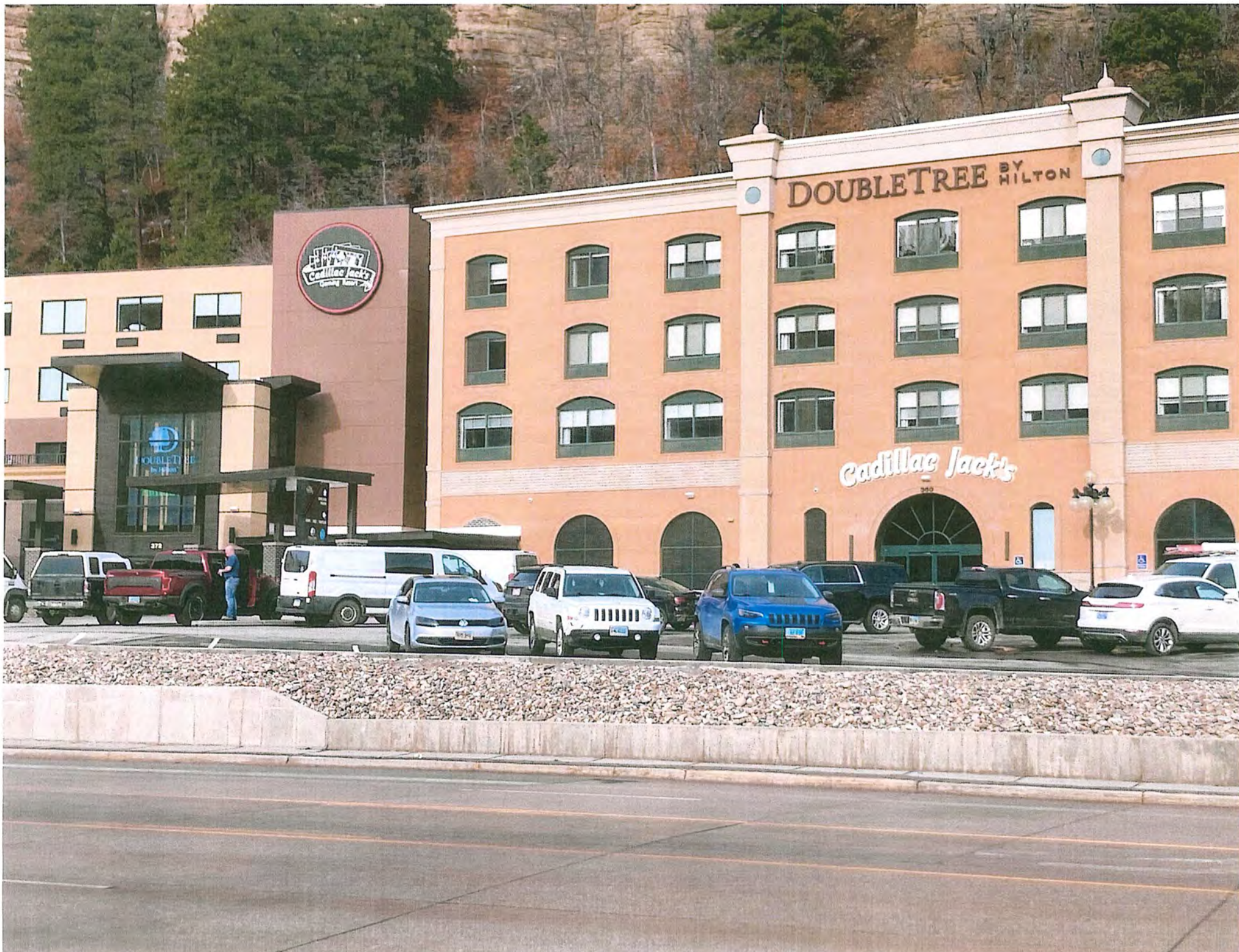
GEM
Theater

MINERAL PALACE

GREEN FRONT
THEATER









"Rocksino 4"

We would like to request a variance for this sign since we will be replacing the existing Hickok's sign with Rocksino.