



January 29, 2024

Jared Schippers, PE
Albertson Engineering Inc.
3202 West Main Street, Suite C
Rapid City SD 57702

RE: Whitewood Creek Restoration, Deadwood SD
Sites 1C, 2A, 2B, 3A, & 3B
Cost Proposal #05 – Proposal Request No. 5 (January 23, 2024)

Dear Jared,

We are pleased to provide you with the following proposal for cost changes related to Proposal Request No. 5. See itemized proposal below:

- 1. New Retained Equipment Pad: \$17,021.22**
Includes Redi-rock block retaining wall, 185 SF of 4" thick concrete slab and 6 EA bollards. RCS requests 2 additional working days to complete the added work.
- 2. Flowable Fill Concrete: \$1,161.43**
Includes providing approximately 3 cubic yard of flowable fill to install as directed in Structural Observation Report #3 dated December 10th, 2023. RCS requests no additional working days to complete the added work.
- ~~**3. Cost Change Associated with SSI 02: \$728.32**
Includes cost of changing the concrete screw anchors that fasten the steel angles and light pole brackets to the concrete wall from galvanized material to stainless steel. RCS requests no additional working days to complete the added work.~~
- 4. Replace Existing Bollard with Post & Rail Fence: \$2,527.28**
Includes replacing 4 existing bollards at the back of Monument's parking lot with (4) 6x6 post and (2) horizontal 2x6 rails between posts. RCS requests 1 additional working day to complete the added work.

We appreciate the opportunity to provide this proposal and should you have any questions or comments please don't hesitate to contact our office.

Kind Regards,
Reid Hansen

Reid Hansen, Project Manager

TOTAL FOR CHANGE ORDER 3:
\$20,709.93

Safety • Quality • Communication • Timeliness

P.O. Box 9337 • Rapid City, SD 57709
Phone (605) 342-3787 • Fax (605) 348-4041
www.rcsconst.com





Albertson Engineering Inc.

605-343-9606

www.albertsonengineering.com

3202 W. Main, Suite C
Rapid City, SD 57702

315 N. Main Ave., Suite 200
Sioux Falls, SD 57104

201 S. Monroe St., Suite 203A
Winner, SD 57580

REQUEST FOR PROPOSAL

OWNER:

City of Deadwood
108 Sherman St
Deadwood, SD 57732

PROJECT:

Whitewood Creek Restoration – BP #1

PROPOSAL REQUEST NO: 5

TO CONTRACTOR:

RCS Construction
PO Box 9337
Rapid City, SD 57709

DATE OF ISSUANCE: January 23, 2024

CONTRACT FOR: All Work

AEI PROJECT NO: 2020-096.1

Please submit an itemized proposal for changes in the Contract Sum and Contract Time for proposed modifications to the Contract Documents described herein. Submit proposal or notify the Engineer in writing of the date on which you anticipate submitting your proposal.

THIS IS NOT A CHANGE ORDER, CONSTRUCTION CHANGE DIRECTIVE, OR A DIRECTION TO PROCEED WITH THE WORK DESCRIBED IN THE PROPOSED MODIFICATIONS.

Description:

1. Provide new retained equipment pad area at the back of Monument's parking lot.
 - a. See Attachment #1 for equipment size and location. Equipment area can be larger based on block coursing but shall not be smaller.
 - b. Area to be retained using 28" Redi-rock blocks with a standard 28" Top Block at the top (not a 24" freestanding block). Stain Redi-rock blocks.
 - c. Provide a 4" concrete slab on grade within area. Reinforce with #4 rebar @ 18"oc each way.
 - d. Provide 6 total bollards per Attachment #2. See also Attachment #3 for Typical Bollard detail.
2. Provide cost for flowable fill as directed in Structural Observation Report #3 dated December 10, 2023.
3. Provide any cost change associated with SSI 02 dated 1/23/2024, if any.

4. Replace the 4 existing bollards at the back of Monument's parking lot with 4 6x6 rail posts. Provide (2) horizontal 2x6 rails between the posts. (See Attachment #4).

REQUESTED BY:

Jared Schippers, PE

Albertson Engineering, Inc

jared@albertsonengineering.com

ATTACHMENTS

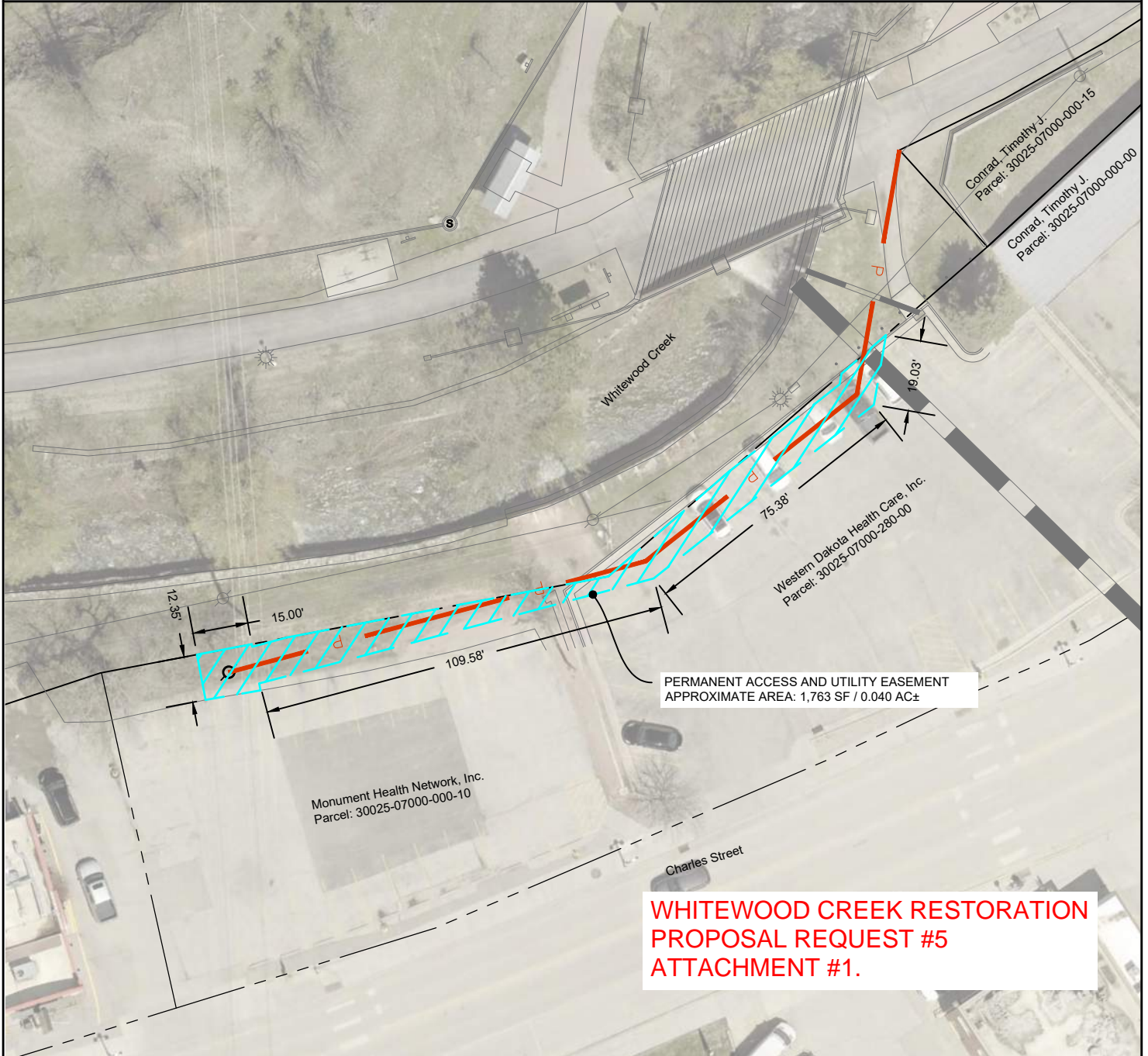
1. Equipment pad size & location at Monument parking lot, by Towey Design Group.
2. Notes on Bollard locations and quantity at Monument parking lot, by Towey Design Group.
3. Typical Bollard Detail.
4. Annotated photo of new wood bollards & railing at Monument Parking Lot



DECEMBER 21 2023

EXHIBIT 'A' PERMANENT ACCESS & UTILITY EASEMENT OVERVIEW

ORIGINAL TOWN DEADWOOD M&B DESCRIPTION BLK 70
AND
ORIGINAL TOWN DEADWOOD S 90' OF LOTS 6, 8, 10 & 12 BLK 75 EX LOT H1
CITY OF DEADWOOD, LAWRENCE COUNTY, SOUTH DAKOTA



PREPARED BY:

TDG
Towey Design Group
475 Villa Drive, Suite #3
Box Elder, SD 57719
605.600.3758

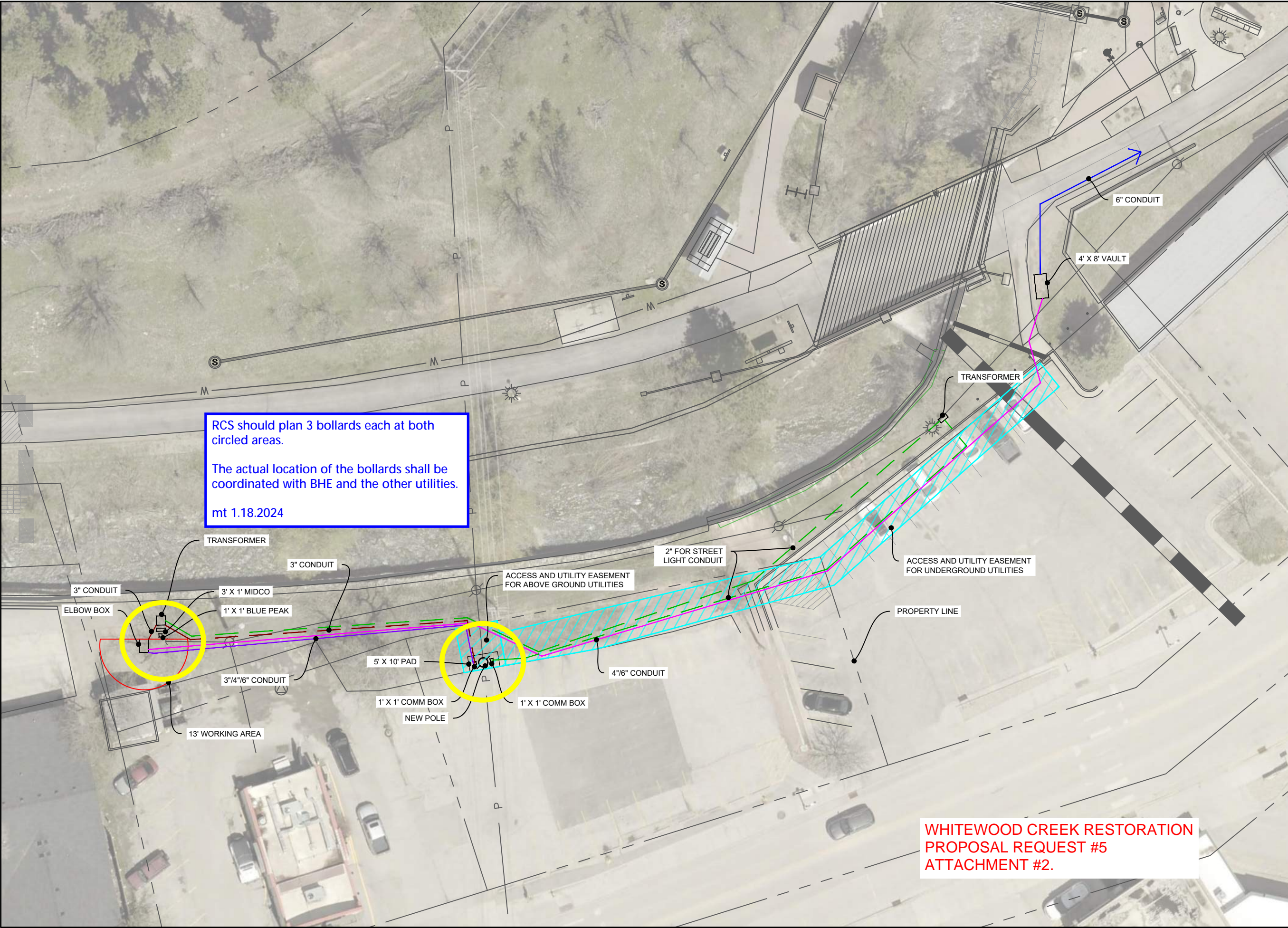


20' 10' 0 20' 40'
SCALE: 1" = 40'

LEGEND

- Parcel Line
- Easement Line
- Easement Hatch

T:\TDC\00 - Projects\20-011 - 2019 Flood Damages - Deadwood\Drawings (Combined Phases)\Exhibits\2023.12.14 Monument Exhibit.dwg 12/14/2023 3:28pm



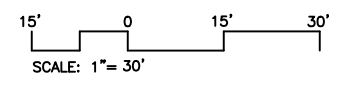
RCS should plan 3 bollards each at both circled areas.
The actual location of the bollards shall be coordinated with BHE and the other utilities.
mt 1.18.2024

WHITEWOOD CREEK RESTORATION
PROPOSAL REQUEST #5
ATTACHMENT #2.

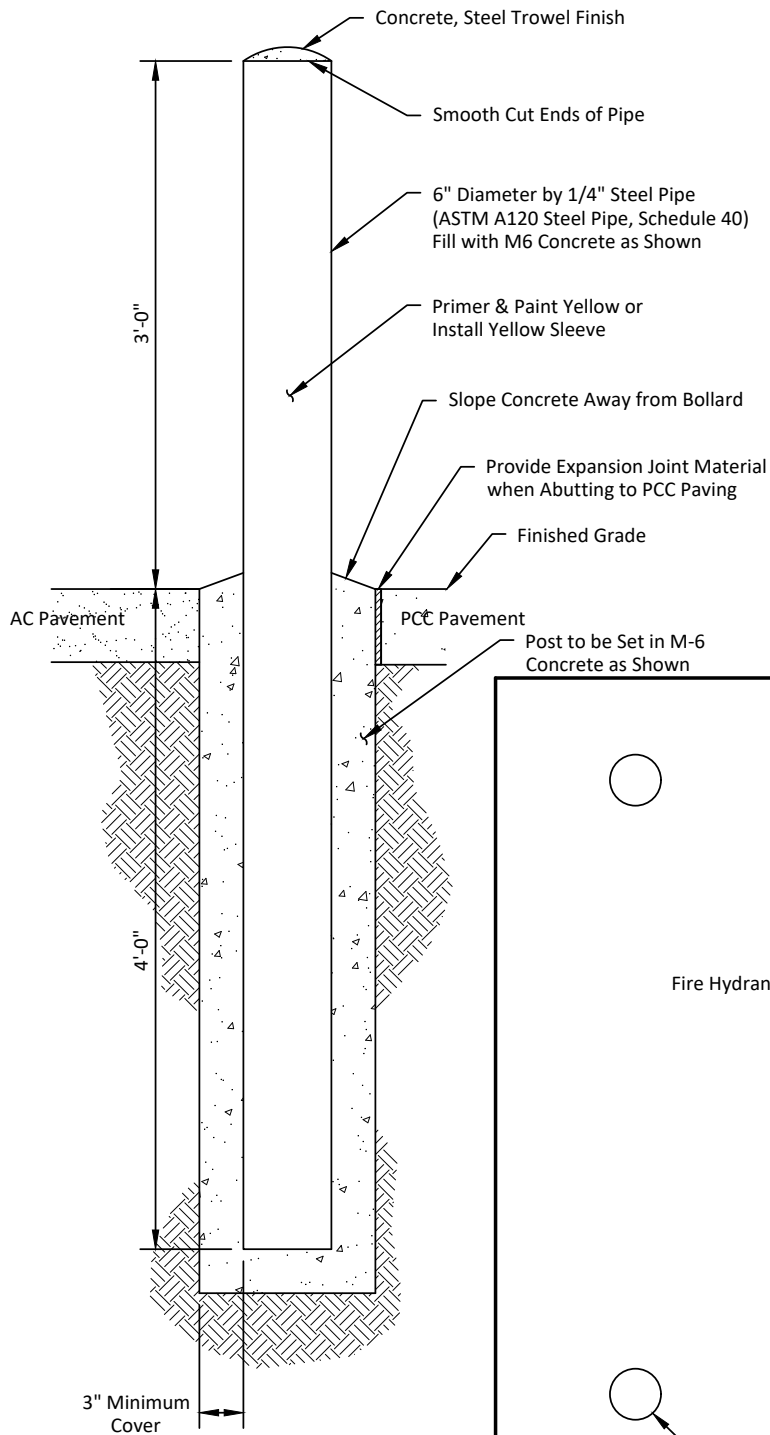
- 3" CONDUIT
- 3/4" CONDUIT
- 4" CONDUIT
- 6" CONDUIT
- STREET LIGHT CONDUIT
- EASEMENT

MONUMENT HEALTH
EXHIBIT A
DEADWOOD, SOUTH DAKOTA
DECEMBER 14, 2023

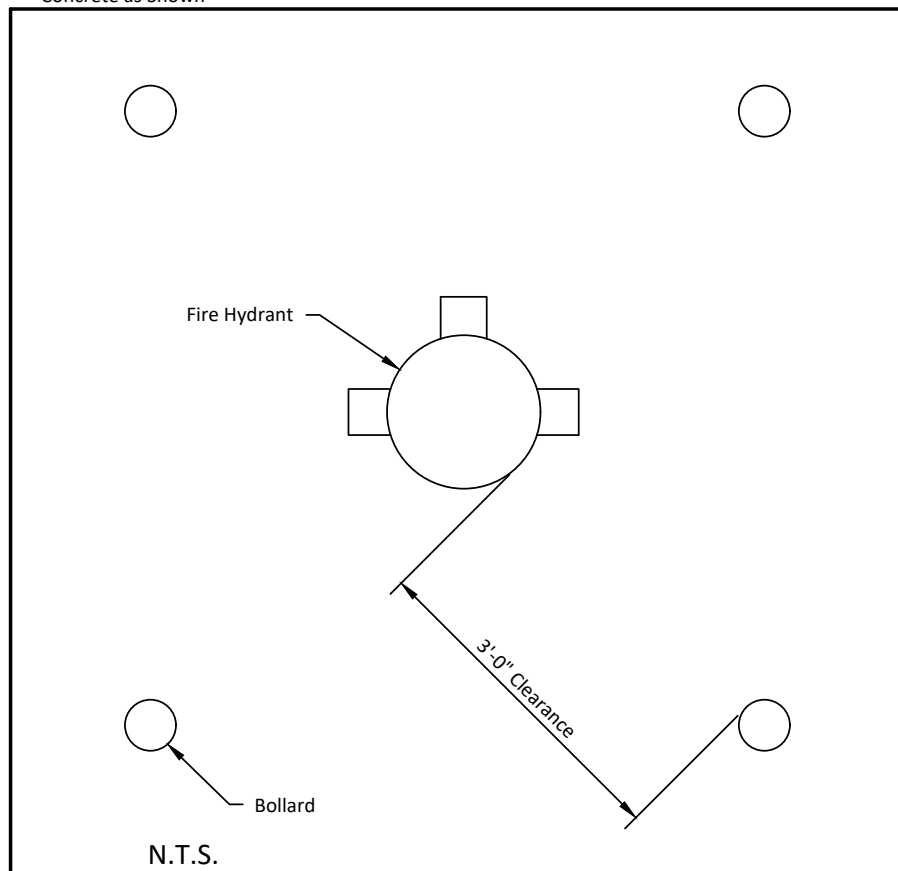
TDG
Towey Design Group
475 Villa Drive, Suite #3
Box Elder, SD 57719
605.600.3758



**PRELIMINARY
FOR REVIEW ONLY**



**WHITEWOOD CREEK RESTORATION
PROPOSAL REQUEST #5
ATTACHMENT #3.**



CITY OF RAPID CITY

PUBLIC WORKS DEPARTMENT

**FIRE HYDRANT PROTECTION
BOLLARD DETAIL**

DATE: 8-19-22

Sec. - Sht.
8A-2



2X6 RAIL, FASTEN
PER SS102

AT (4) LOCATIONS SHOWN,
DEMO BOLLARDS AND
REPLACE W/ 6X6 POST AS PER
DETAIL 5 ON SHEET L-304

WHITEWOOD CREEK RESTORATION
PROPOSAL REQUEST #5
ATTACHMENT #4.



Albertson Engineering Inc.

605-343-9606

www.albertsonengineering.com

*3202 W. Main, Suite C
Rapid City, SD 57702*

*315 N. Main Ave., Suite 200
Sioux Falls, SD 57104*

*201 S. Monroe St., Suite 203A
Winner, SD 57580*

STRUCTURAL SUPPLEMENTAL INSTRUCTION NO. 02

Project: Whitewood Creek Restoration
AEI Project #: 2020-096.1
FEMA Project #: 123108
Owner: City of Deadwood
Engineer: Albertson Engineering Inc.
Contractor: RCS Construction
Contract Date: August 1, 2023
Date of Issuance: January 23, 2024

GENERAL REMARKS:

The Work shall be carried out in accordance with the following supplemental instructions issued in accordance with the Contract Documents without change in Contract Sum or Contract Time. If Work described herein requires change in the Contract Sum or Contract Time, said changes shall be arranged for and agreed upon through a separate contract mechanism before proceeding with the Work.

DESCRIPTION:

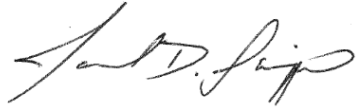
1. 6'-0" long posts can be utilized along the pedestrian railing that is directly attached to the sidewalk edge. The steel angle location shall be adjusted. Also, the concrete screw anchors that fasten the steel angles to the concrete shall be changed from a mechanically galvanized material to stainless steel. See attached Sheet S-304.
2. See attached LASI 2 by Tallgrass Landscape Architecture.

ATTACHMENTS:

1. Sheet S-304
2. LASI by Tallgrass Landscape Architecture (2 pages).

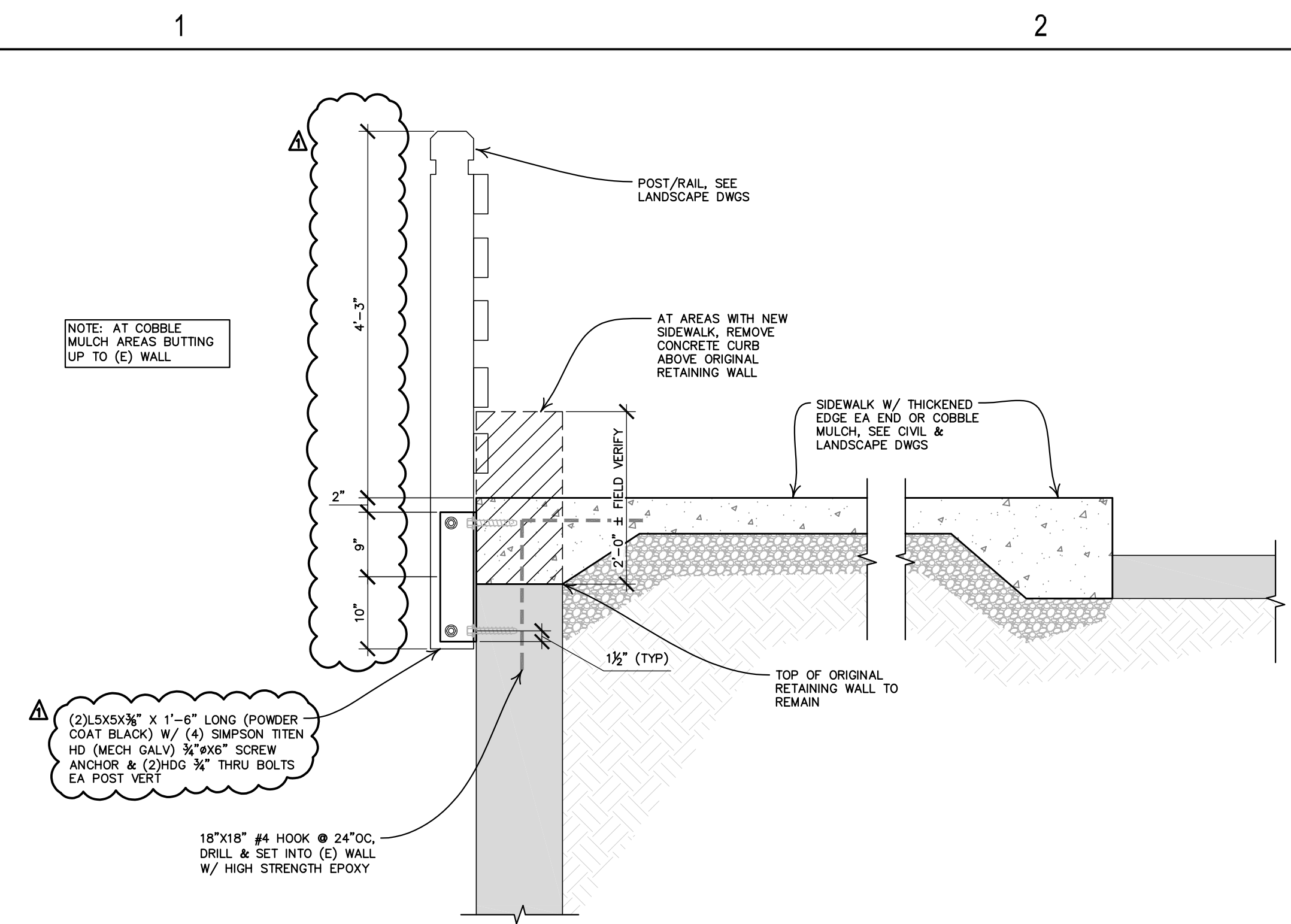
ISSUED BY THE ENGINEER:

Albertson Engineering, Inc.

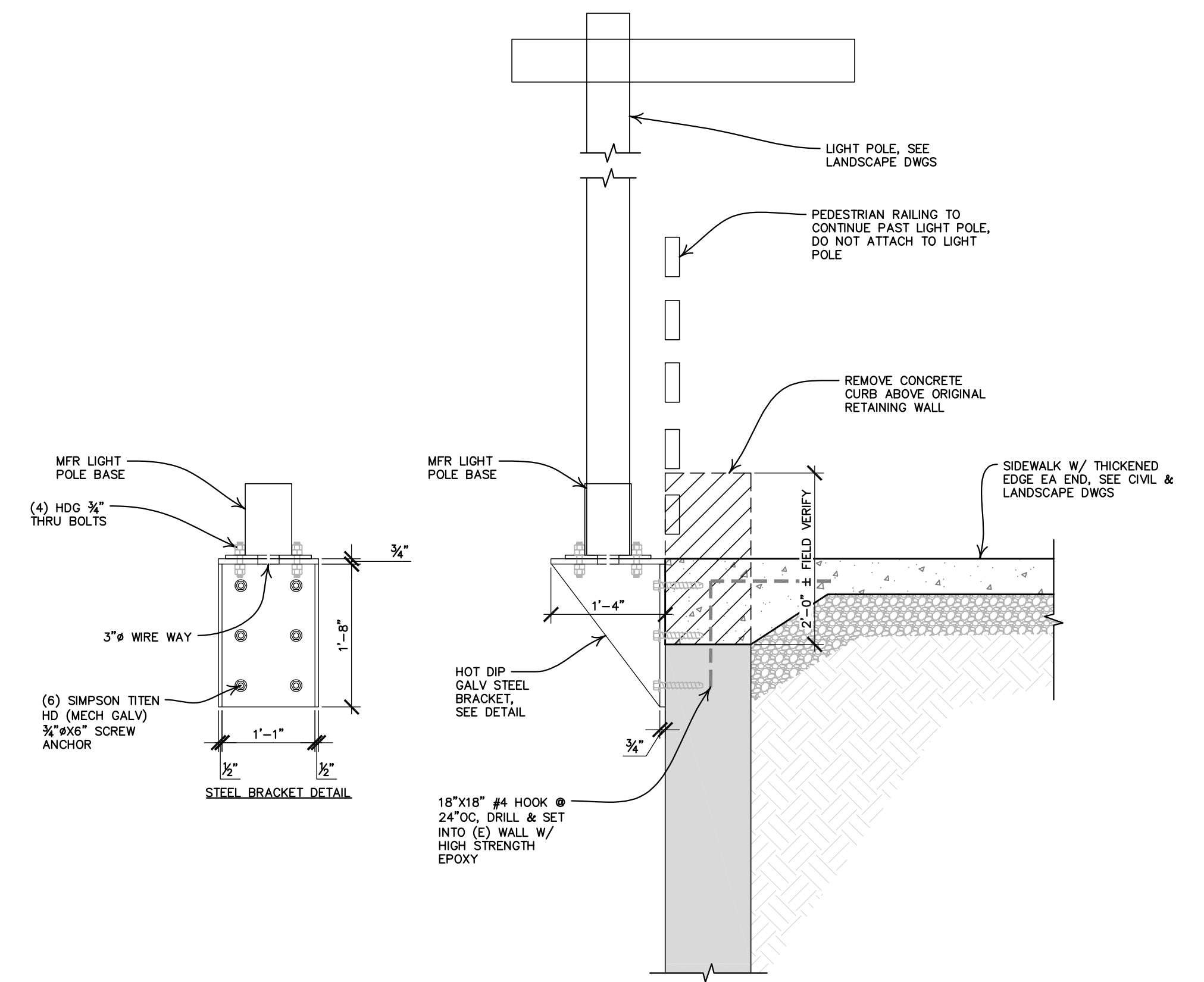
A handwritten signature in black ink, appearing to read "Jared Schippers".

Jared Schippers, PE
Principal Engineer
jared@albertsonengineering.com

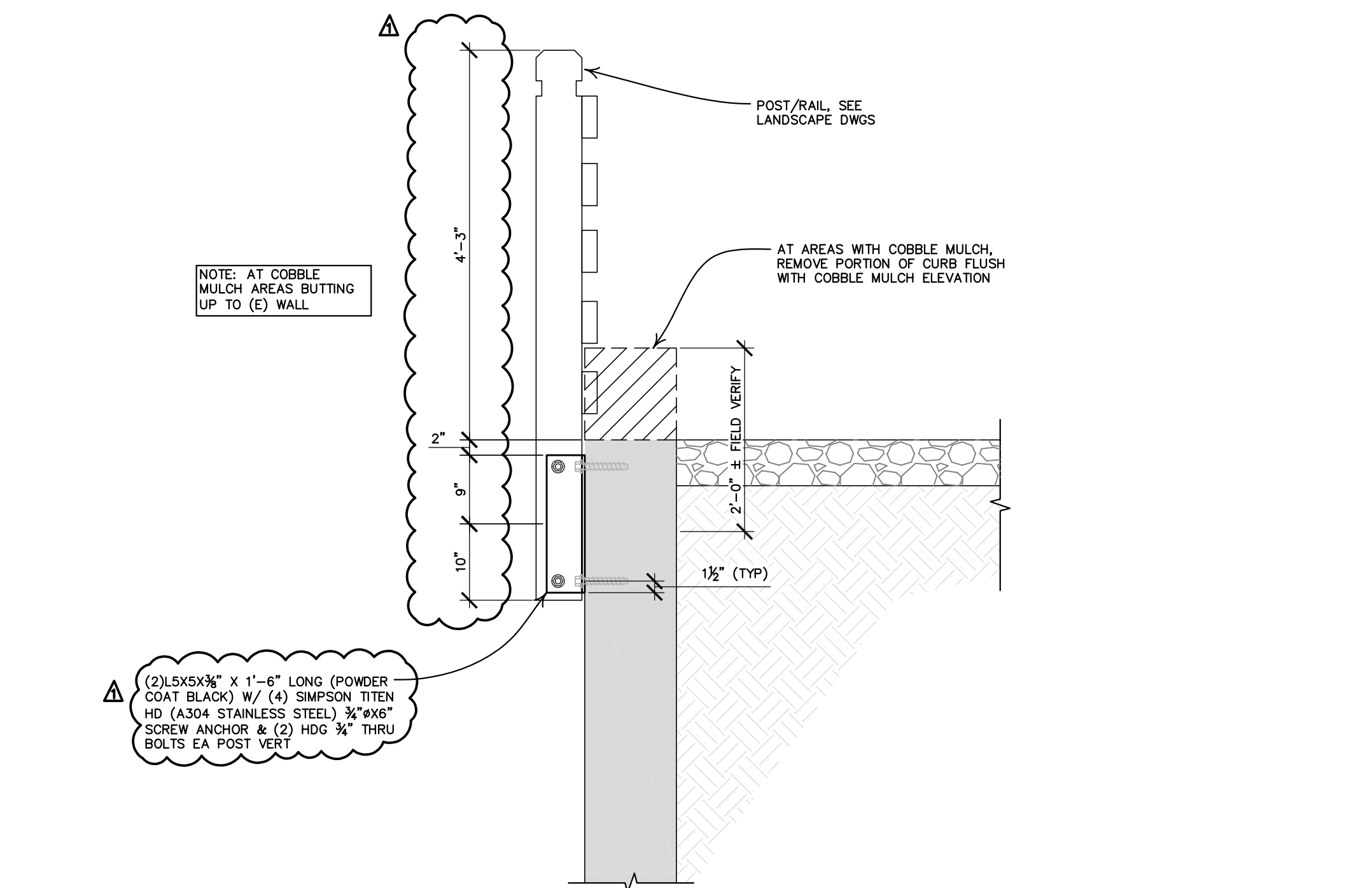




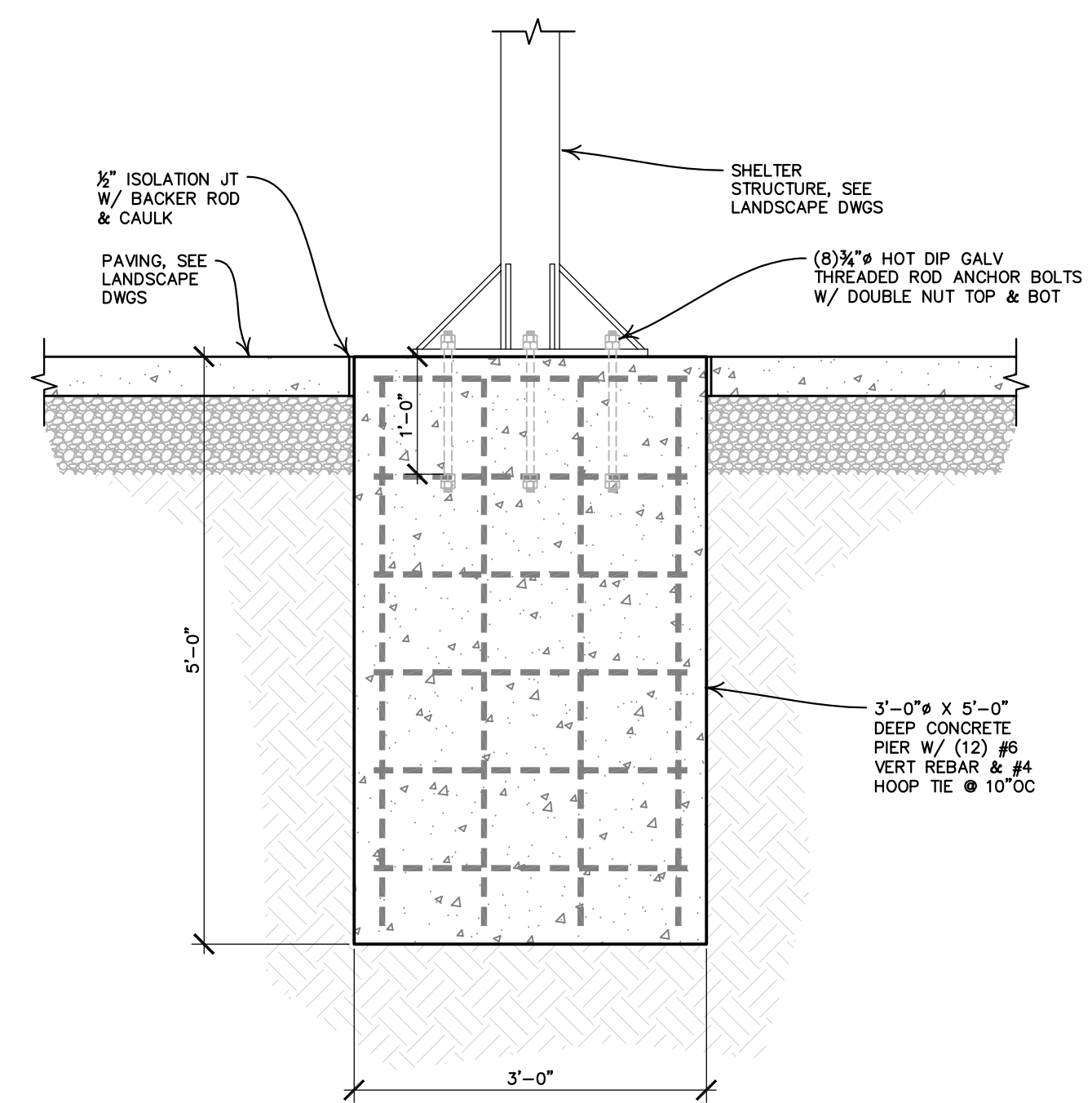
RAIL POST CONNECTION TO (E) WALL – SITE 1C
SCALE: 3/4" = 1'-0"



LIGHT POLE CONNECTION TO (E) WALL – SITE 1C
SCALE: 3/4" = 1'-0"



RAIL POST CONNECTION TO (E) WALL – SITE 1C
SCALE: 3/4" = 1'-0"



SHELTER FOUNDATION DETAIL – SITE 1C
SCALE: 3/4" = 1'-0"



Albertson Engineering Inc.
3202 W. MAIN, SUITE C
RAPID CITY, SD 57702
605.343.9606

CONSULTANT

PROJECT IDEN:
WHITEWOOD CREEK RESTORATION
BID PACKAGE 1
SITES 1C, 2A, 2B, 3A, 3B

FEMA PROJECT NO. 123108
DEADWOOD, SOUTH DAKOTA

ISSUE BLOCK:

NO	ISSUE TYPE	ISSUE DATE
1	100% CD	5/18/2023
	SSI 01	1/23/2024

MANAGEMENT:
PROJECT NO: 20-096.1
DRAWN BY: JDS
CHECKED BY: JDS/MDA

SHEET TITLE:
SITE 1C CONNECTION DETAILS

SHEET IDENTIFICATION:

S-304

Tallgrass Landscape Architecture, LLC
413 North 4th Street
Custer SD, 57730
605.673.3167
info@tallgrasslandscapearchitecture.com
www.tallgrasslandscapearchitecture.com



Landscape Architect's Supplemental Instructions

OWNER
CONTRACTOR
CONSULTANT
OTHER

PROJECT: Whitewood Creek Restoration,
Bid Package 1

INSTRUCTION NO.: 2

OWNER:

DATE OF ISSUANCE: 1/23/2024

City of Deadwood

LANDSCAPE ARCHITECT:

Tallgrass Landscape Architecture, LLC
413 North 4th Street
Custer SD, 57730
605.517.1899 / 605.440.2254
info@tallgrasslandscapearchitecture.com
www.tallgrasslandscapearchitecture.com

TO CONTRACTOR:

R.C.S. Construction
1314 Fountain Plaza Dr.
Rapid City, SD 57702

The attached information is provided at request to clarify the design intent of the work and does not represent any changes in Quantity, Contract Price or Contract Times. If you consider that a change in Contract Price or Contract Times is required, please notify the Landscape Architect immediately and before proceeding with this Work.

THIS IS NOT A CHANGE ORDER OR MODIFICATION TO THE CONTRACT.

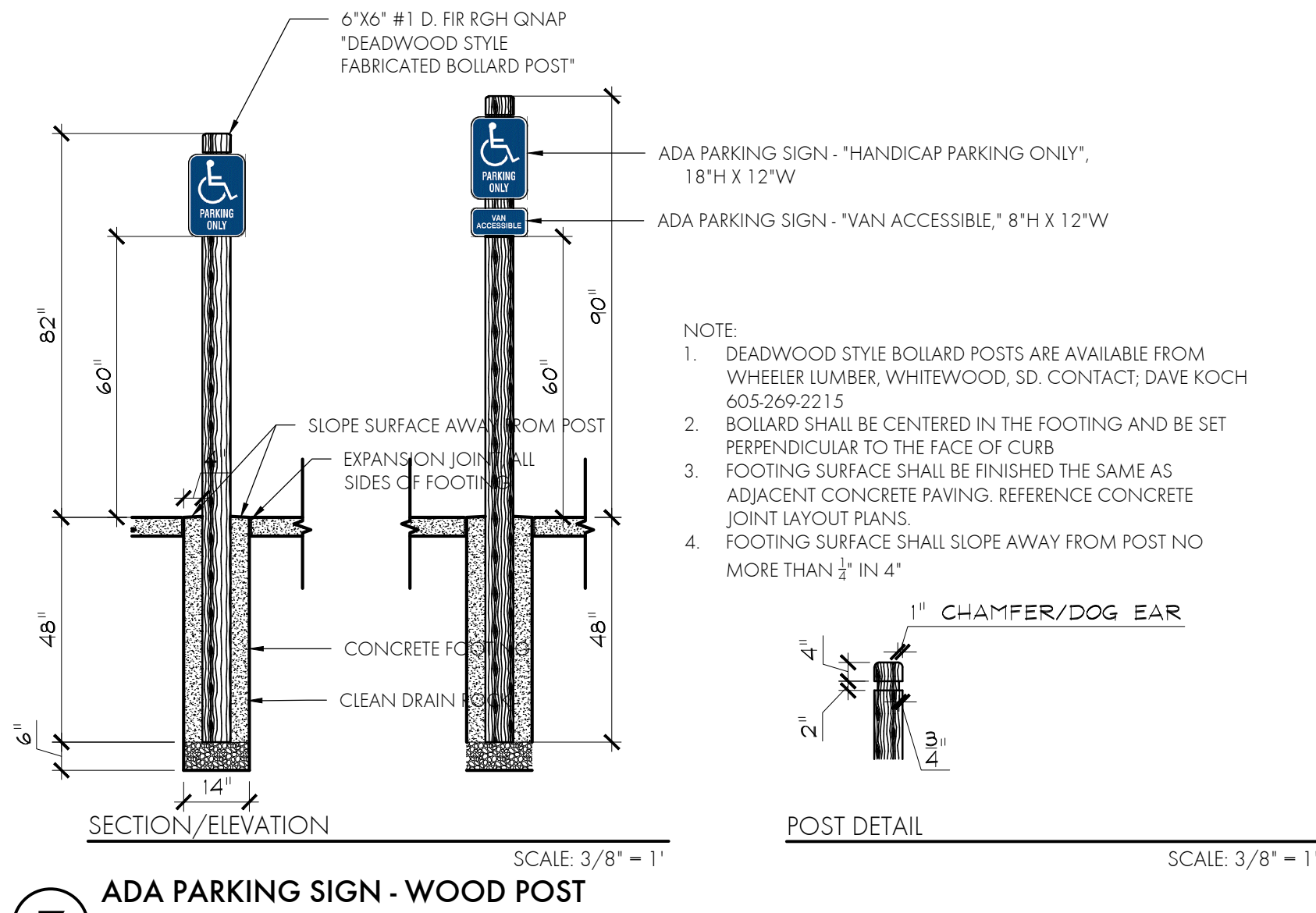
Description:

Supplemental Instruction to clarify that two (2) lag screws are required per fence rail to attach to post, consistent with the Section/Elevation in detail 4 sheet L-304. Also, stagger rail joints each row such that a fence post either has (14) or (16) total fasteners.

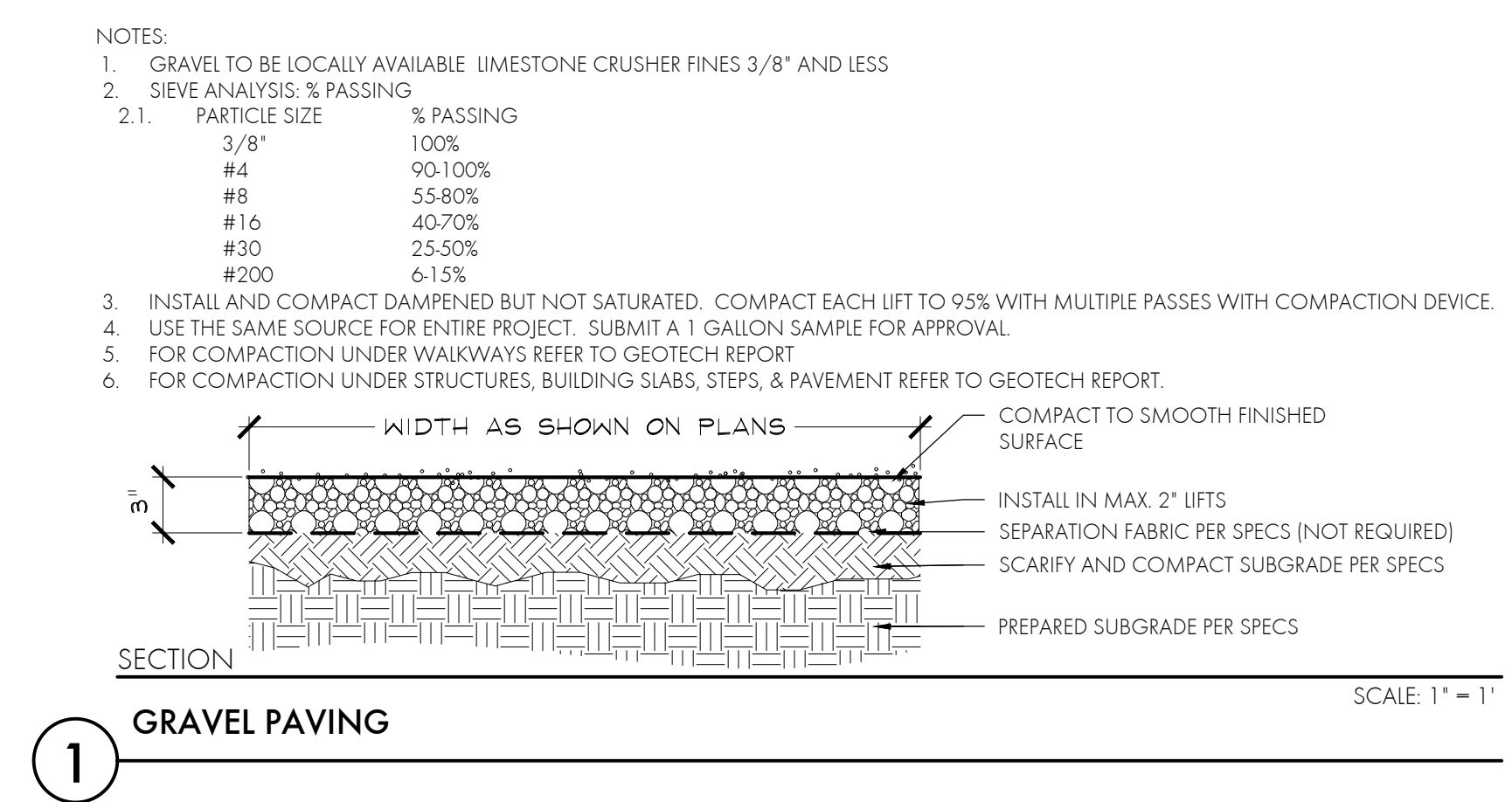
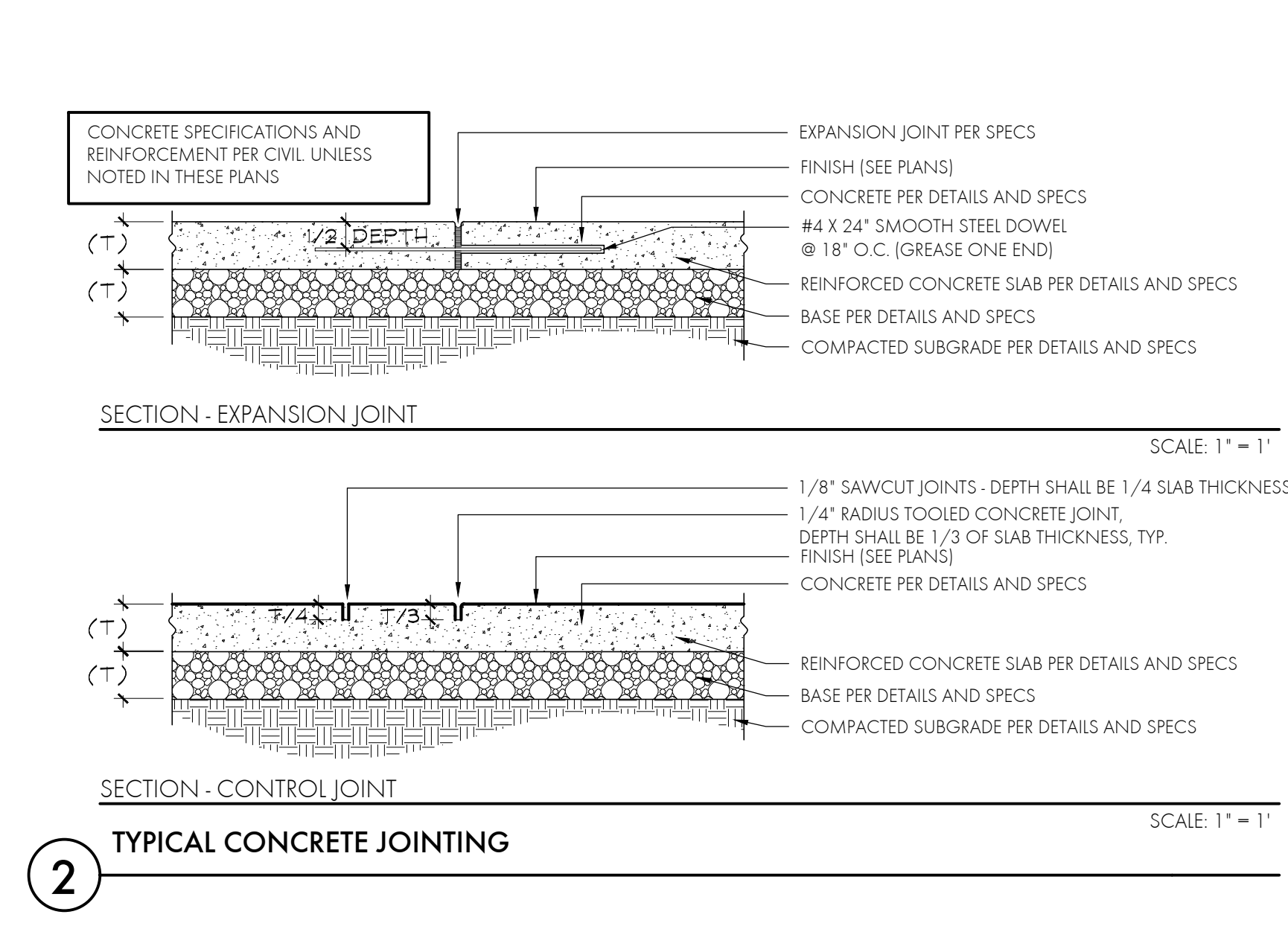
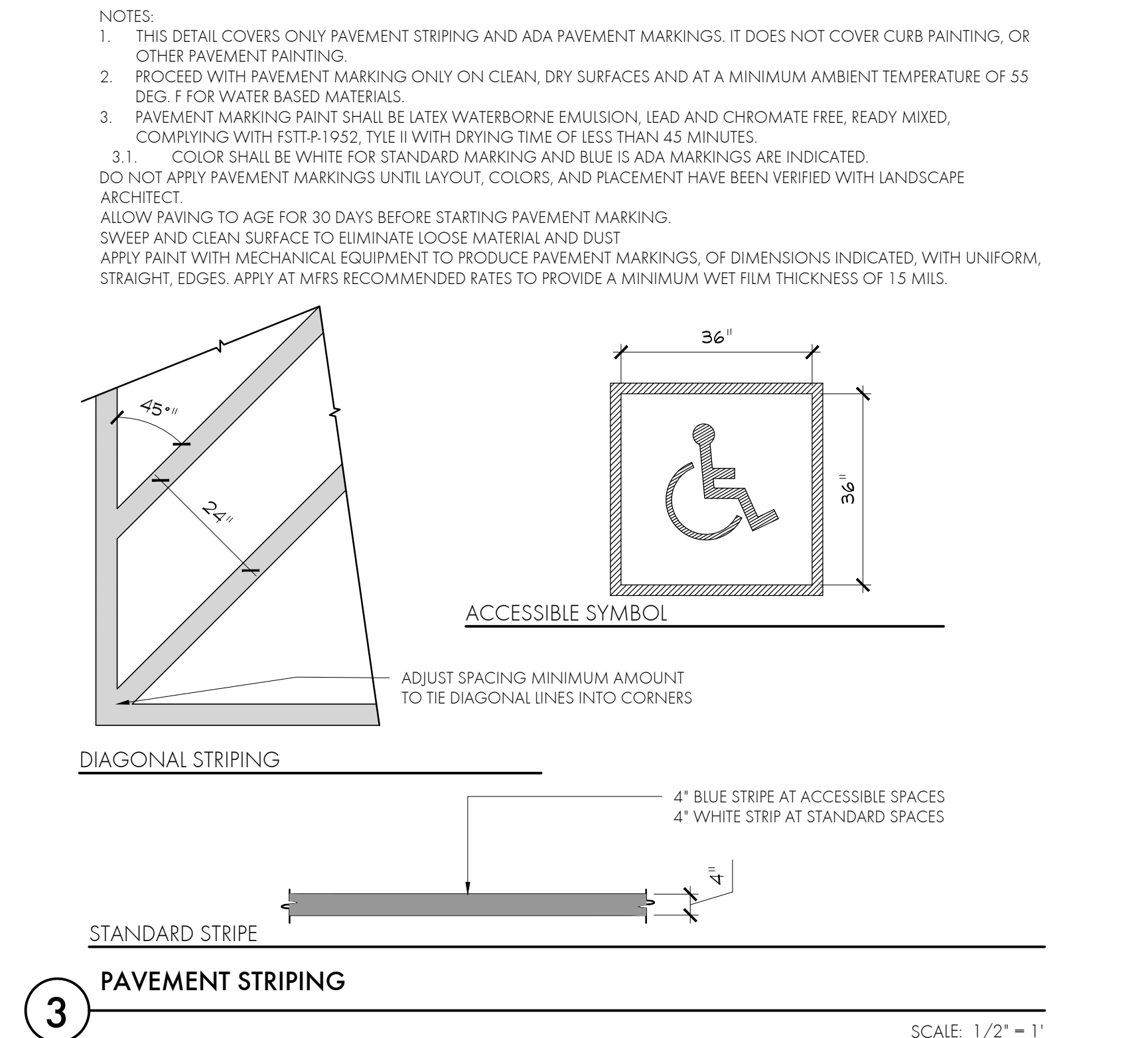
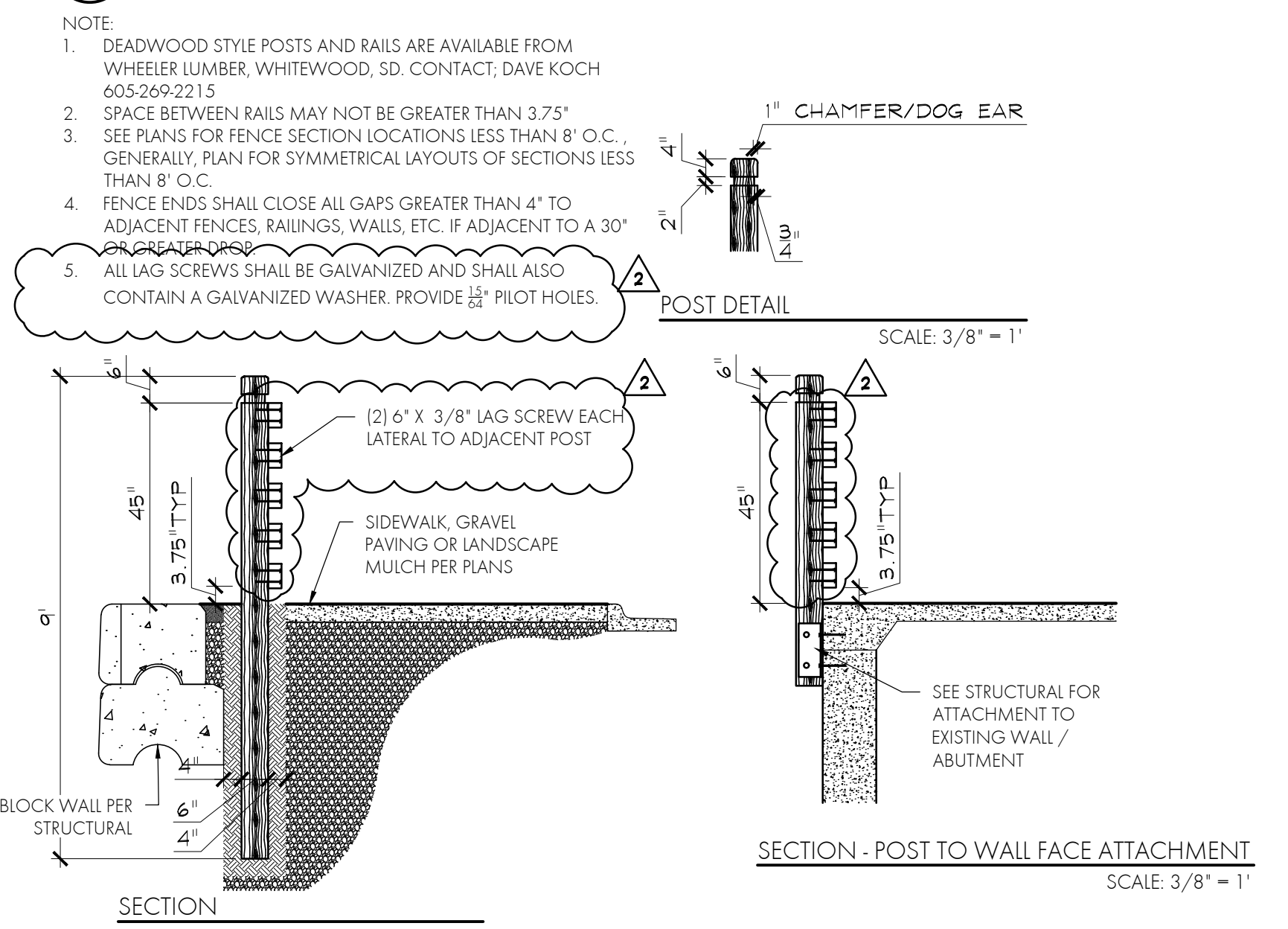
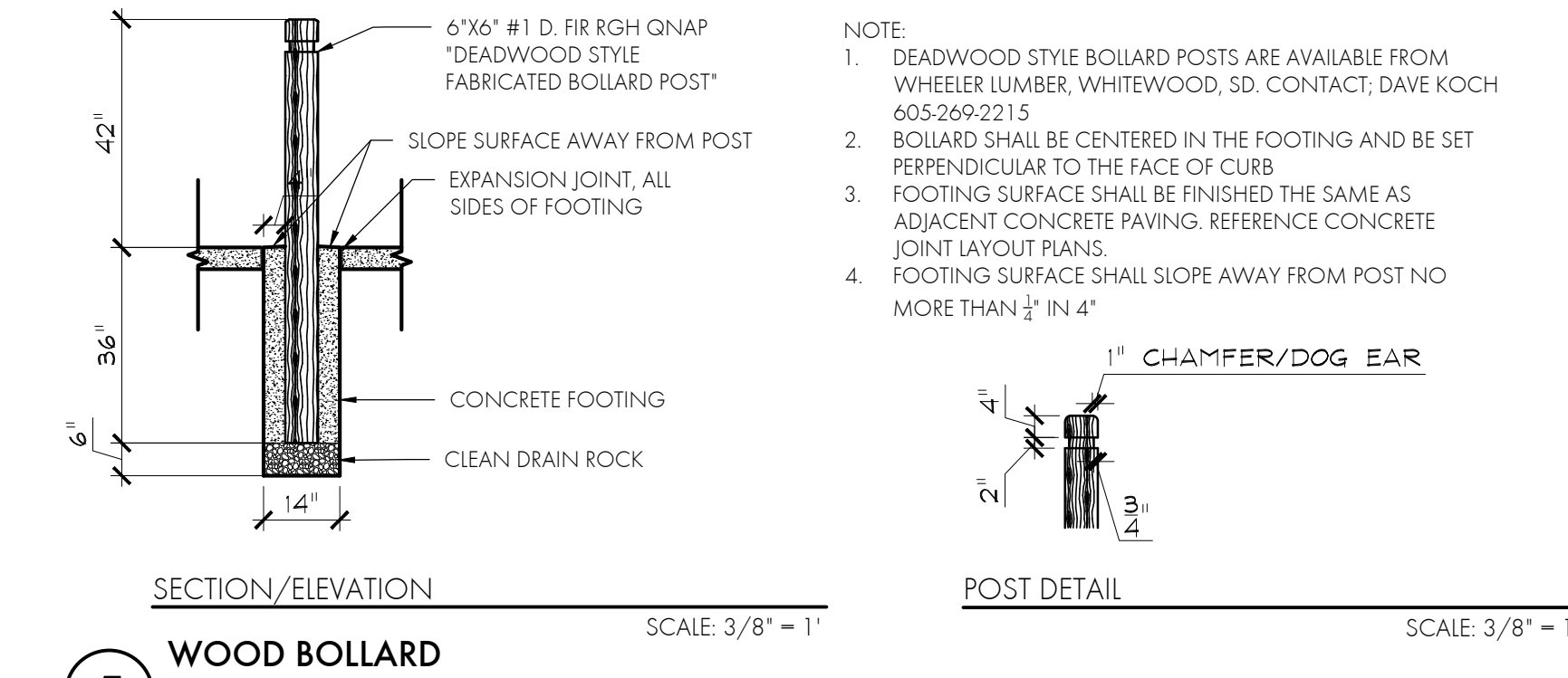
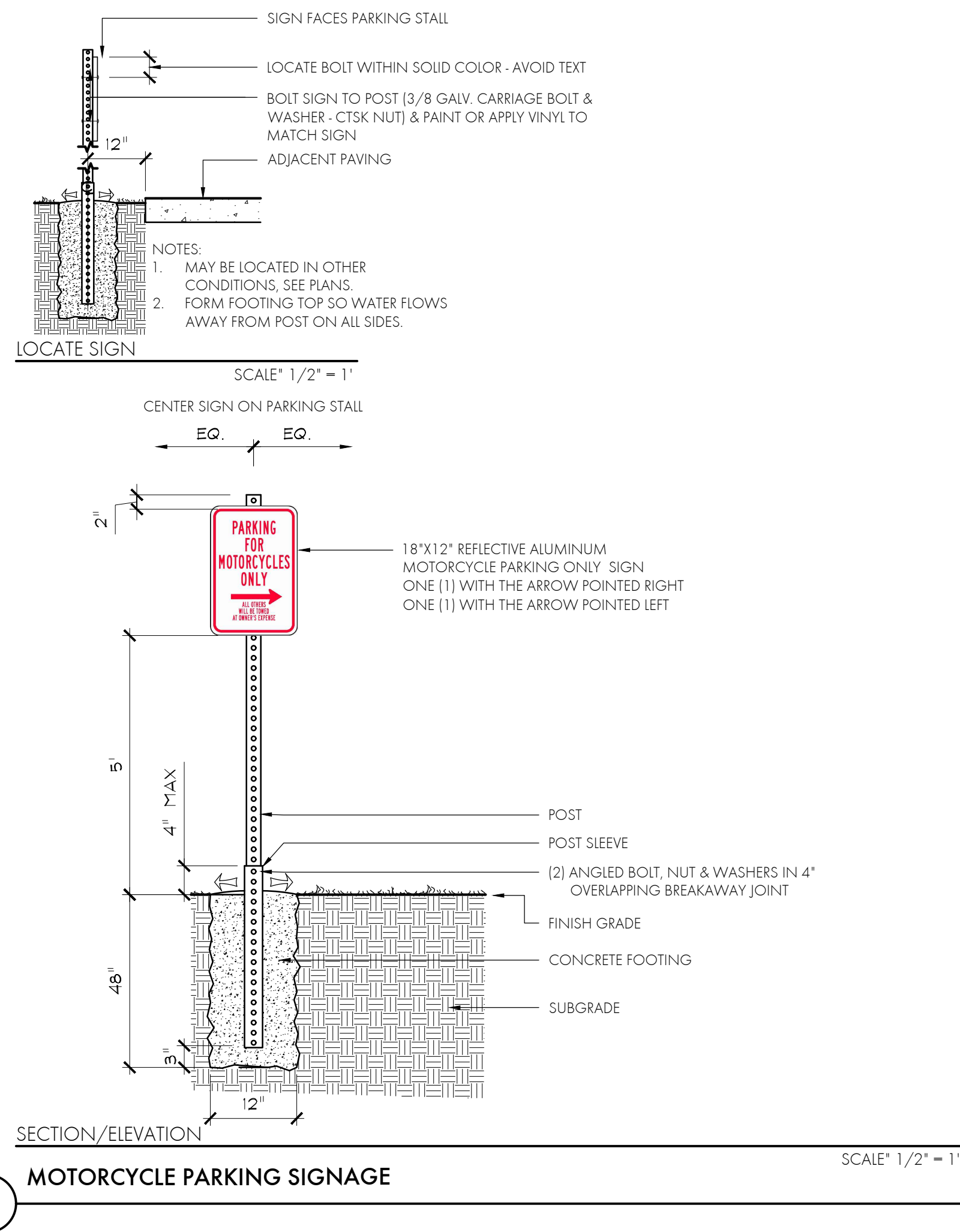
ISSUED BY:

Tanya Olson, PLA
Tallgrass Landscape Architecture, LLC

C



B



Albertson Engineering Inc.
 3202 W. MAIN, SUITE C
 RAPID CITY, SD 57702
 605.343.9606

CONSULTANT

TALLGRASS
 Landscape Architects for the American West
 TALLGRASS LANDSCAPE ARCHITECTURE
 413 NORTH 4TH STREET
 C U S T O M E R S D 5 7 7 3 0
 P H O 6 0 5 6 7 3 1 0 2 7
 F A X 6 0 5 6 7 3 1 0 2 7

PROJECT IDEN:
 WHITEWOOD CREEK RESTORATION
 BID PACKAGE 1
 SITES 1C, 2A, 2B, 3A, 3B

FEMA PROJECT NO.'s 123108
 DEADWOOD, SOUTH DAKOTA

ISSUE BLOCK:

NO	ISSUE TYPE	ISSUE DATE
1	100% CD	5/18/2023
2	LASI	1/16/2024

MANAGEMENT:
 PROJECT NO: 20-096.1
 DRAWN BY: TALLGRASS LA
 CHECKED BY: TAO

SHEET TITLE:
 GENERAL DETAILS -
 SITES 1C, 2A, & 2B

SHEET IDENTIFICATION:
L-304