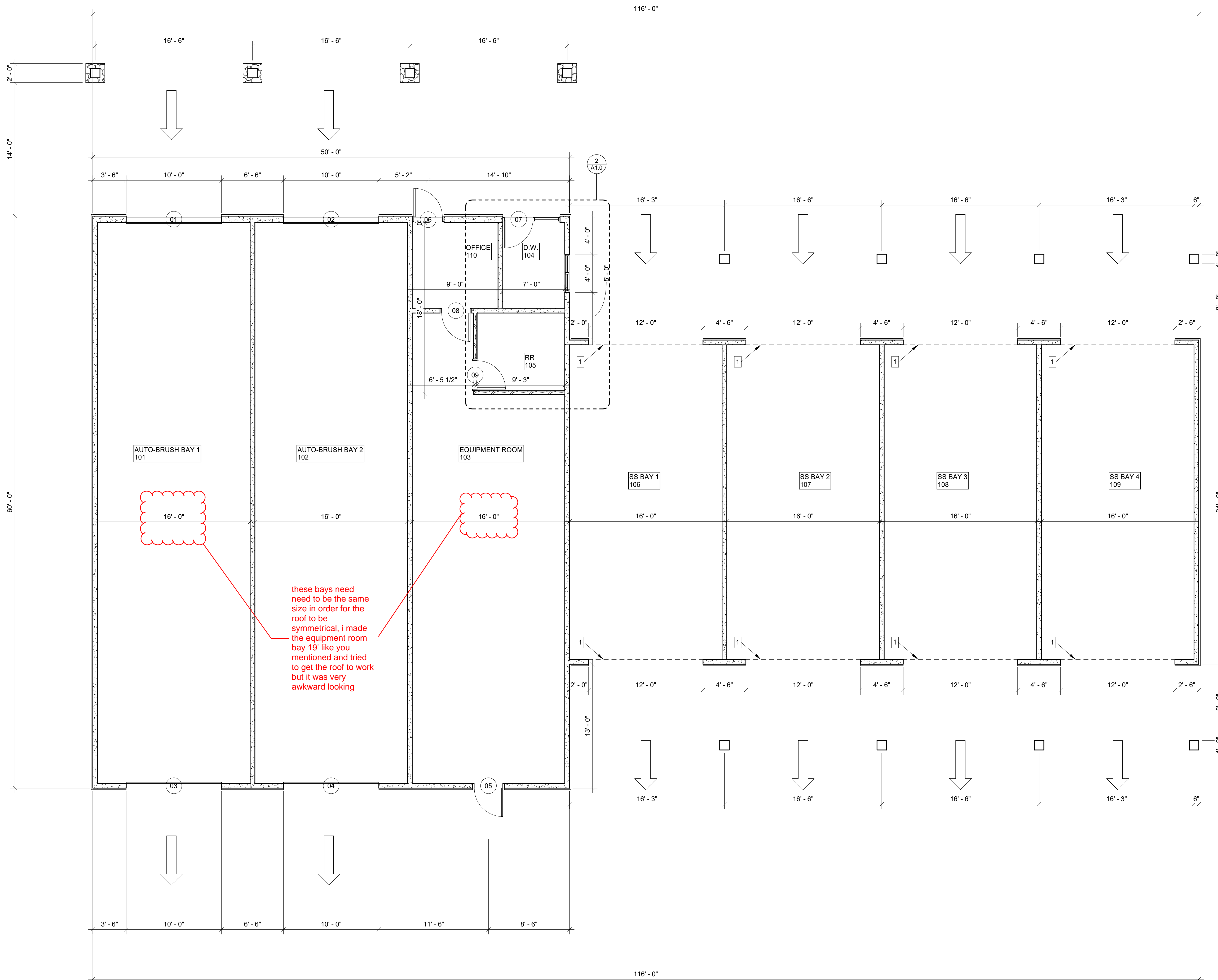
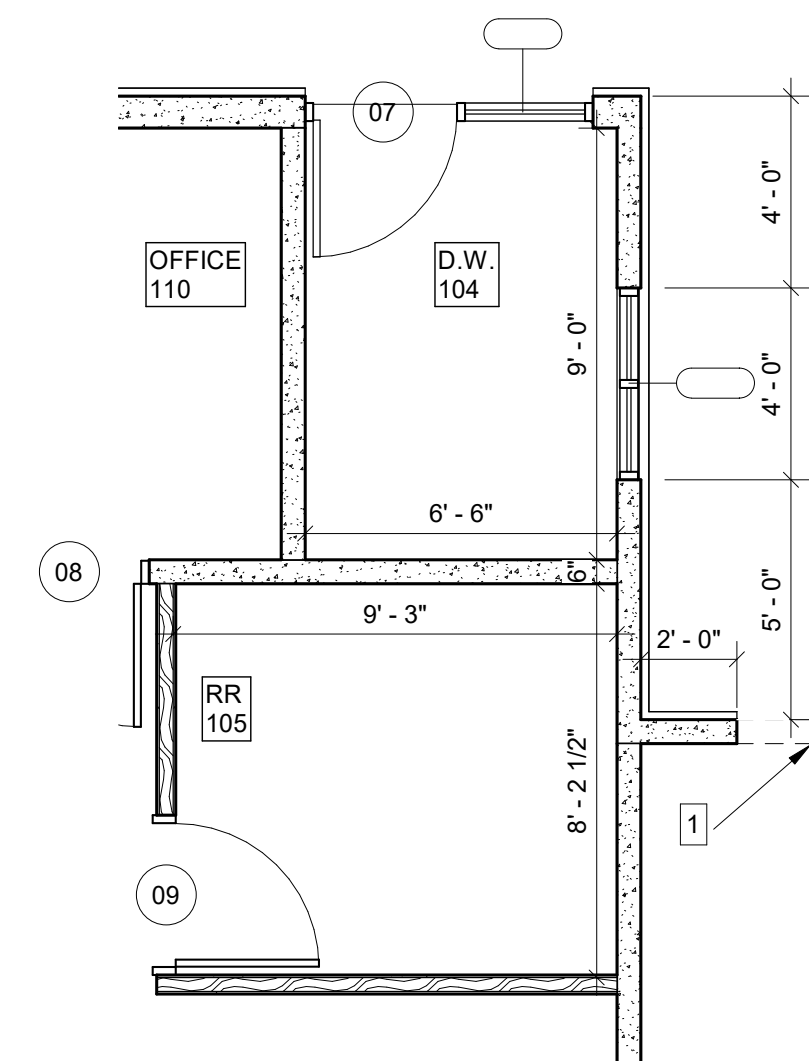


GENERAL NOTES
 1. WALL OPENINGS EXTEND UP 7'-0" A.F.F.
 2.



16'-0"
 16'-0"
 16'-0"

these bays need need to be the same size in order for the roof to be symmetrical, i made the equipment room bay 19' like you mentioned and tried to get the roof to work but it was very awkward looking



1 FLOOR PLAN
 3/16" = 1'-0"

2 ENLARGED PLAN
 1/4" = 1'-0"

X:\Projects\Commercial\3 Deadwood Car Wash\2 Design\1 Schematic Design\Deadwood Car Wash_Schematic.rvt
 9/4/2023 10:23:36 AM

SEAL
PRELIMINARY
NOT FOR
CONSTRUCTION

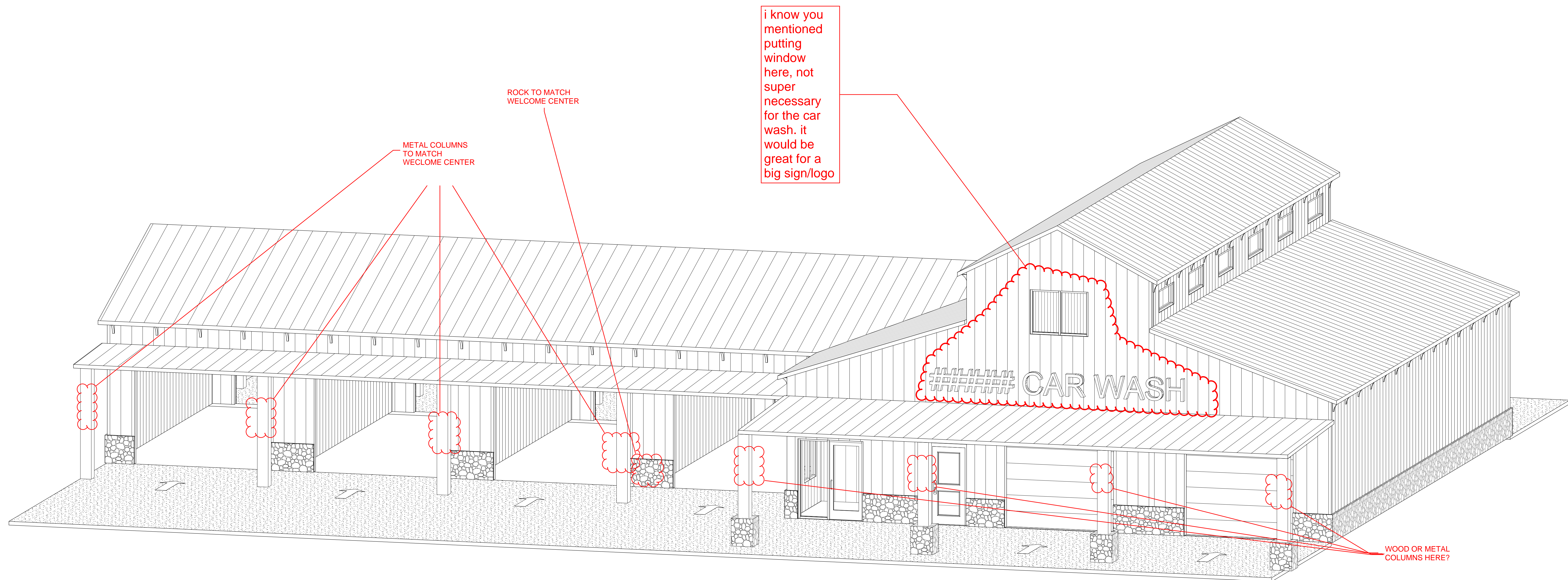
REVISIONS
 ORIGINAL PRINTS
 REVISIONS

COPYRIGHT 2023
 NOTICE TO PLAN
 ARCHITECT AND ARCHITECTS ARE OBLIGATED TO RETAIN ALL COMMON INSTRUMENTS OF SERVICE AND OTHER RELEVANT DOCUMENTS TO ALL COMMON GENERAL PROVISIONS AND ADDITIONAL PROVISIONS IN ANY UNAUTHORIZED DUPLICATION OR REPRODUCTION OF THIS DOCUMENT IS PROHIBITED. CALL ARCHITECT FOR PERMISSION PRIOR TO DOING SO.

QUALITY CONTROL

PHASE	CHK'D BY
15%	P.M.
30%	P.M.
60%	P.M.
90%	P.M.

DATE
 COMM. NO.
 SHEET
A1.0
 PLANS

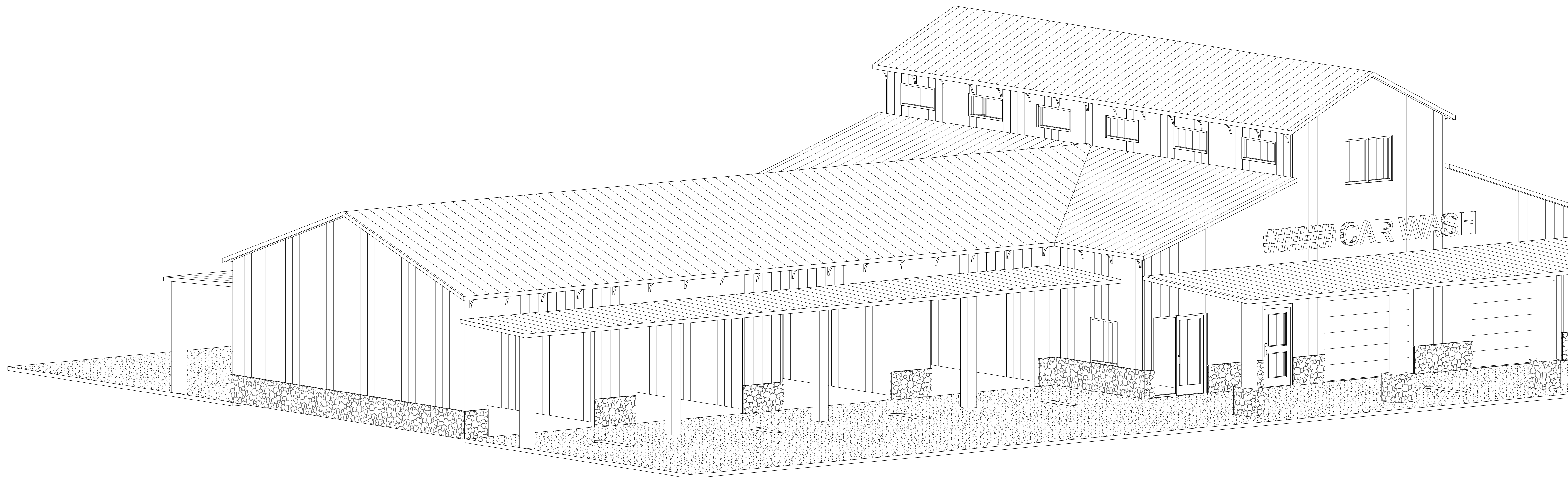


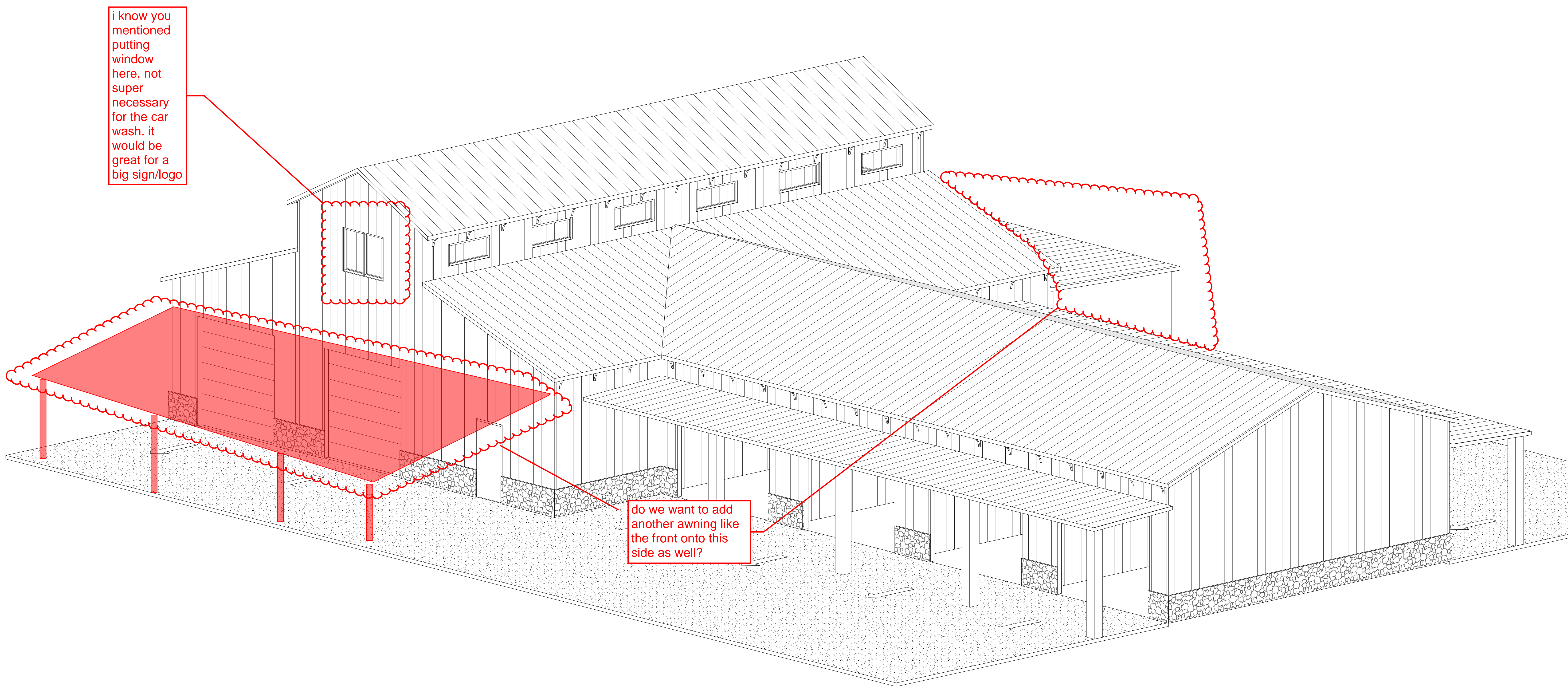
METAL COLUMNS
TO MATCH
WELCOME CENTER

ROCK TO MATCH
WELCOME CENTER

i know you mentioned
putting
window
here, not
super
necessary
for the car
wash. it
would be
great for a
big sign/logo

WOOD OR METAL
COLUMNS HERE?





i know you mentioned putting window here, not super necessary for the car wash. it would be great for a big sign/logo

do we want to add another awning like the front onto this side as well?

