

DICKINSON STATE UNIVERSITY



Telephone
701-483-2486

Address
291 Campus Drive
Dickinson ND 58601

Website
www.dickinsonstate.edu

January 2024

TABLE OF CONTENTS

DSU PRESENTATION



01 Sanford Sport Complex

02 Nursing Sim

03 SWCTE Partnership

04 TRPL and DSU

05 Economic Impact

06 Athletic Future

07 Ag & Rodeo Updates

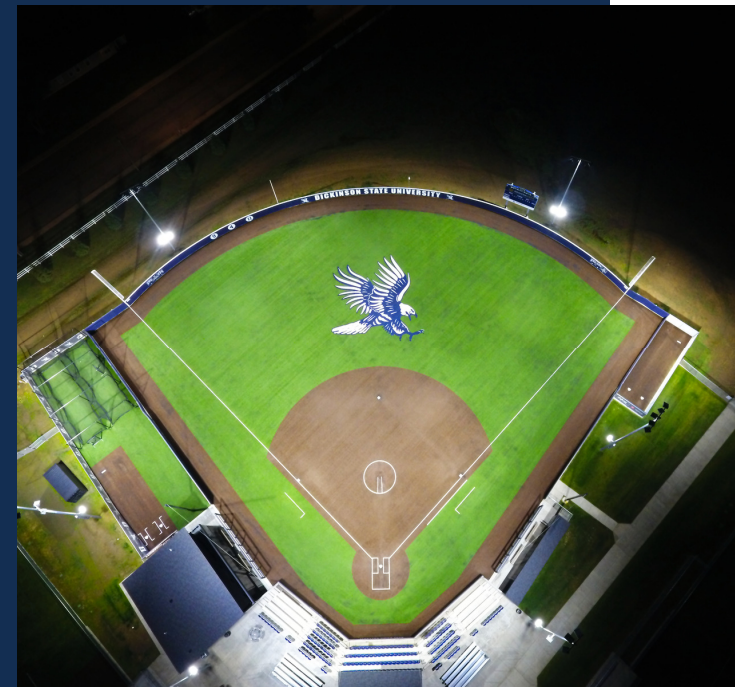


SANFORD SPORTS COMPLEX

COMPLETED!

- Raised \$5.5 Million in 6 months
- Developed 5 Soccer Fields
 - Planned to serve over 700 Soccer players, starting in Summer or Fall '24
- Developed 4 Softball fields- Turf on Bravera field
 - Planned to serve over 500 softball players
 - Hosted tournaments-WDA, NSAA, and weekend tournaments
- Partnered with City, County, and many private donors.

THANK YOU



FILLING NEEDS

NURSING SIMULATION LABS



- ~\$750,000 rehab, including construction and equipment
- Building nursing programs to help meet a critical area need
- \$200,000+ donors contributions
- 100% placement rate
- Graduating 23 LPN and 17 RN nurses annually



SWCTE PARTNERSHIP

WE ALL SUCCEED TOGETHER

SWCTE AND DSU

DSU and the DSU Heritage Foundation assist with:

- SWCTE fundraising goal of \$4 million by the end of 2024
- Handling all multi-year pledges for SWCTE
- Raising dollars for all areas of SWCTE

No Fees are applied to the SWCTE Fundraising goal

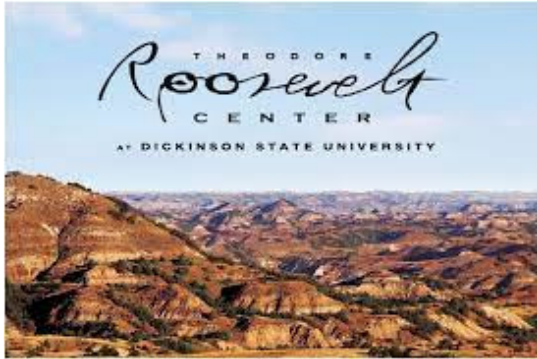
DSU AT THE SWCTE

Our Home for:

- Fire Science
- Welding - Spring of 2024
- Diesel Technology – Anticipated start in July of 2024

TR CENTER AT DSU

WE ALL SUCCEED TOGETHER



PARTNERSHIP WITH THE TRPL

DSU and the DSU Heritage Foundation assist with:

- Providing Endowed Chair in TR Studies for DSU
- Providing a home for archives
(project announcements coming soon)
- Connecting Dickinson and the TRPL

**THEODORE
ROOSEVELT**
PRESIDENTIAL LIBRARY

DSU AND THE TRPL

- Continued partnership for years with displays
- Educational hub for the TRPL
- DSU houses our tourist area associated with the TRPL

ECONOMIC IMPACT

DSU AND THE COMMUNITY

01 Student Population

- Over 1,100 students in the city of Dickinson
- 300 in the Resident Halls
- 800 in apartments and homes
- Economic impact of ~\$10,000 annually per student

02 Sanford Sports Complex

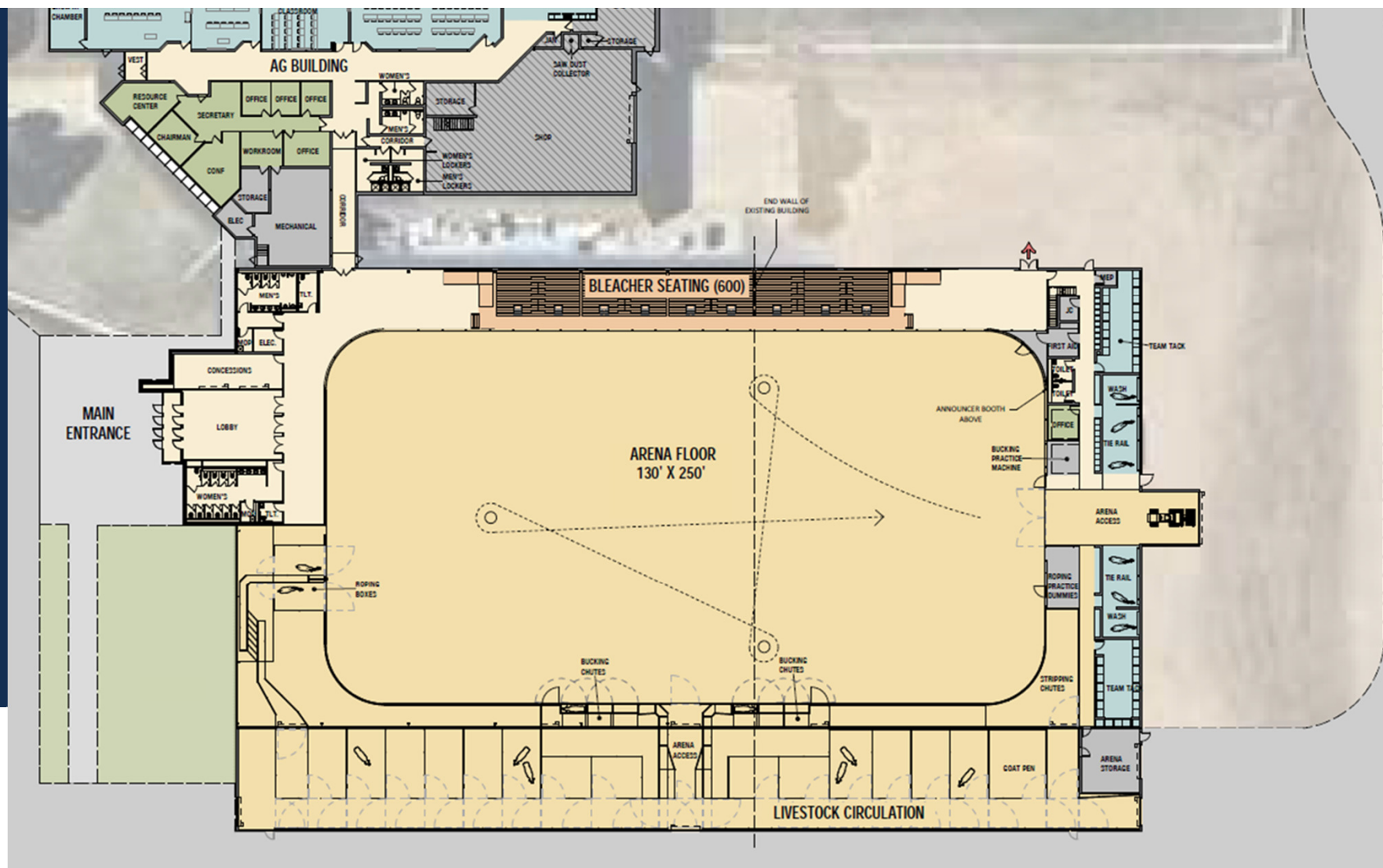
- Hosted 6 tournaments in 2024
- Will be home to over 500 Softball players
- Will be home to over 700 soccer players
- Partnerships with DPS, Trinity, and other local schools



03

Agriculture and Rodeo Renovation Potential

- Public Jackpots (barrels, team roping, breakaway, calf roping, etc.)
- Rodeo Clinics/Schools
- PBR/NDRA/Etc. Events
- High School Rodeos
- Little Britches Rodeos
- 4-H and Livestock Events

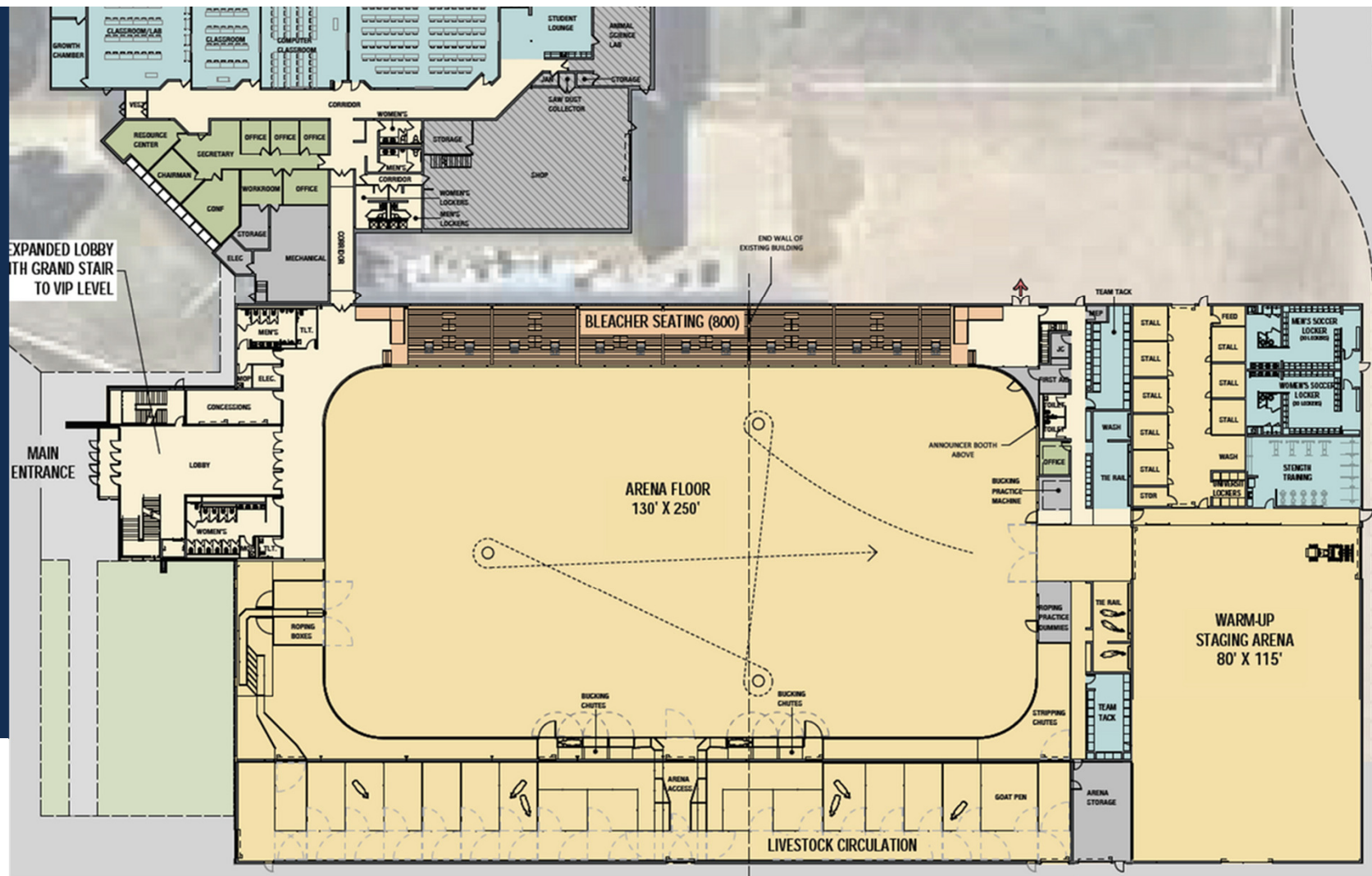


Option 1: \$18 MILLION

- Increased indoor arena space
- Outdoor (covered) livestock
- Limited lobby expansion
- Seating for 600 people
- Repurposed old yellow siding
- No VIP area or press box
- Team tack room
- No Stalls

Option 1 NIGHT VIEW





Option 2: \$25 MILLION

- Enclosed livestock circulation space
- Seating for 800 spectators
- Two-story lobby and concessions area
- South VIP area with 125-person capacity
- Press box on north end of arena
- 80 x 115 Warm-Up/4-H Area
- Stalls
- Locker rooms and weightroom

Option 2 NIGHT VIEW



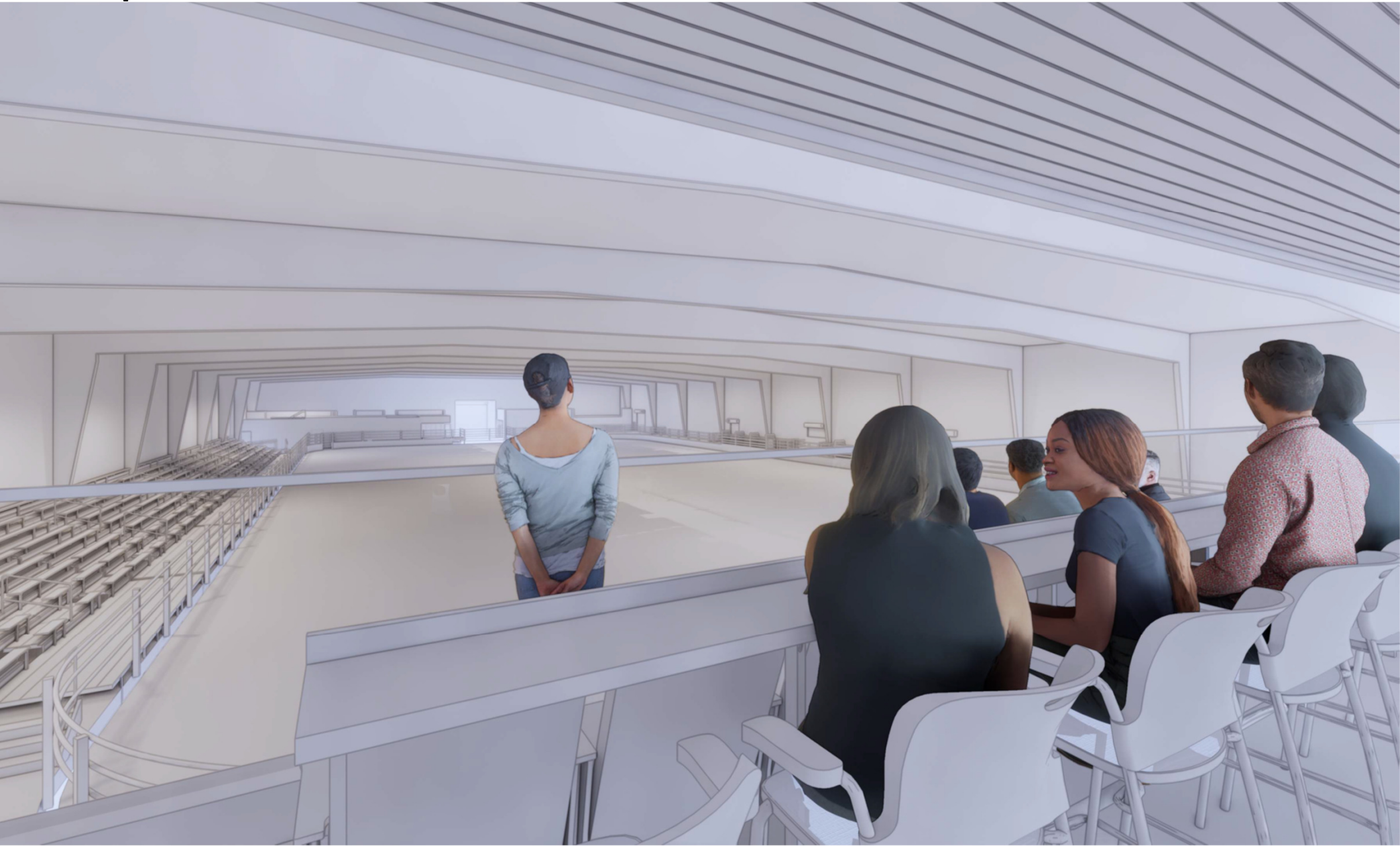
Option 2 Lobby View



Option 2 VIP AREA



Option 2 VIP OBSERVATION DECK





THANK YOU!
