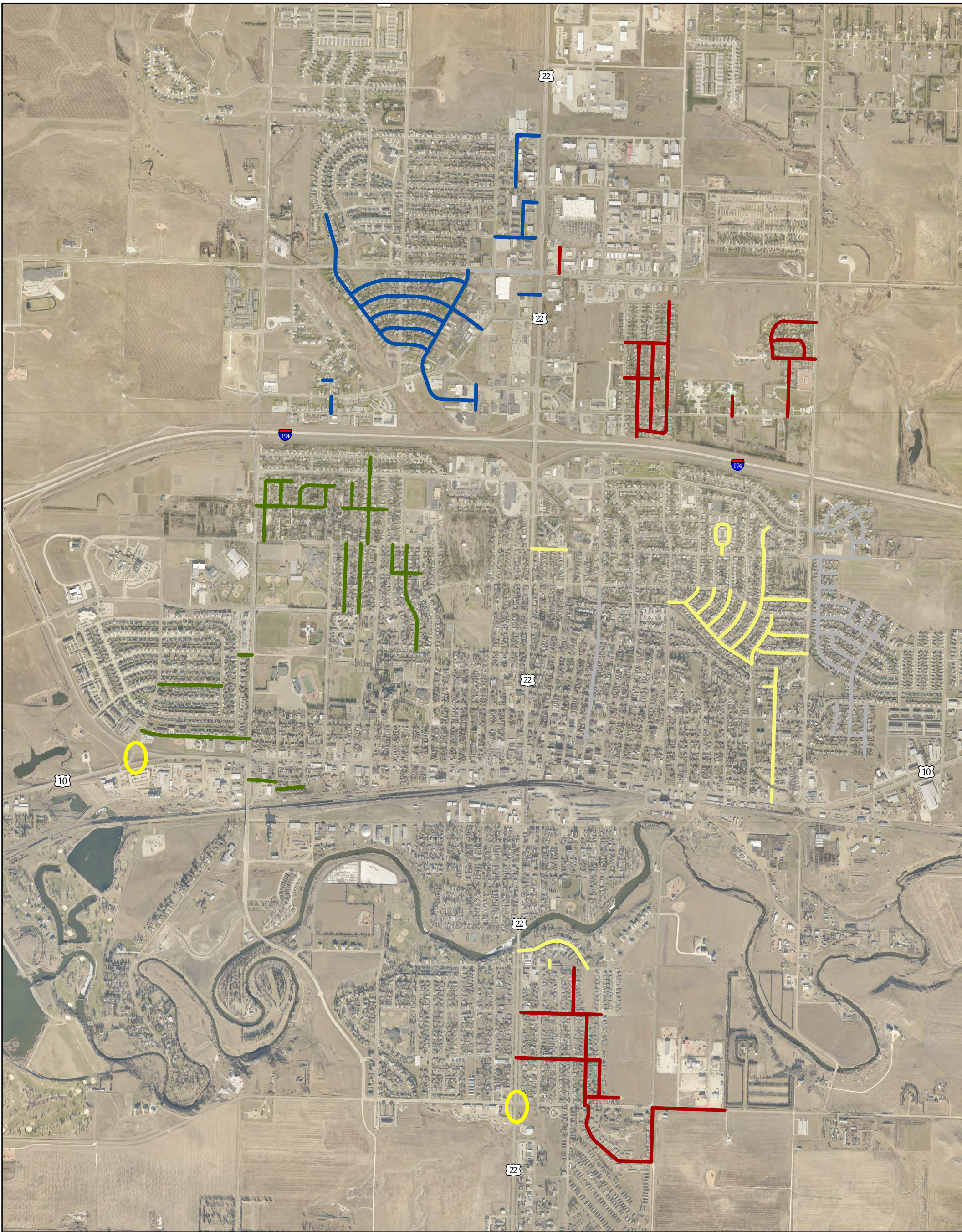


# Pavement Management (Preliminary Road Maintenance Plans)



## Map Features

- Road Maintenance Plan Year

2025 Road Maintenance

2026 Road Maintenance

2027 Road Maintenance
- 2028 Road Maintenance

2029-30 Road Maintenance

Roundabouts

Scale: 1:20,000

2026 TIC = \$8,740,000  
2027 TIC = \$8,750,000  
2028 TIC = \$9,500,000  
2029 TIC = \$9,500,000  
2030 TIC = \$5,500,000

This map depicts Features currently available in a suitable digital format. Basemap: Eagleview 2023 25% Transparency  
Date: 6/3/2025