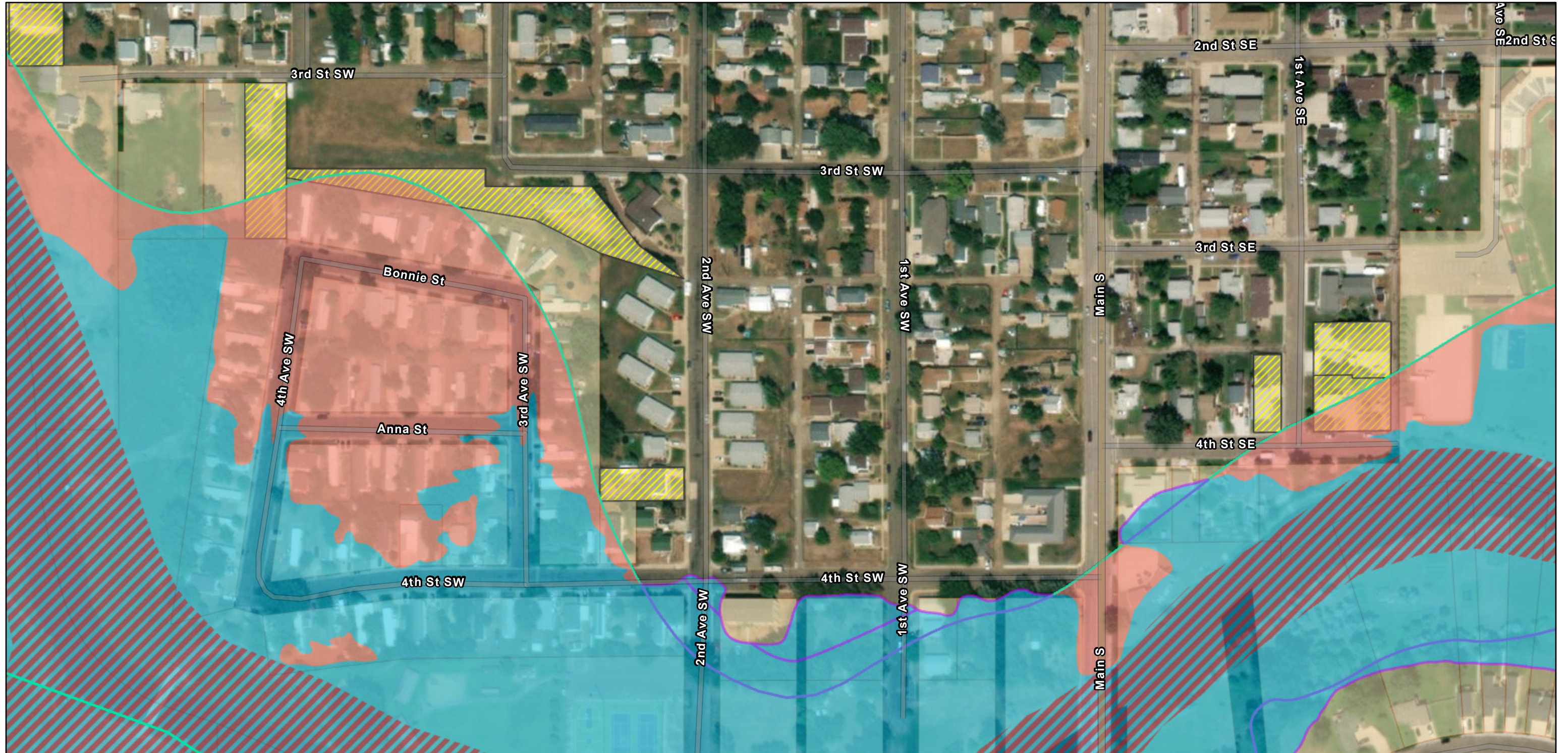





FEMA Flood Hazard Changes Map

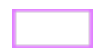






5/5/2023

-  Municipal Boundary
-  Extra Territorial Boundary
-  North Dakota County Boundaries

SFHA Area Changes

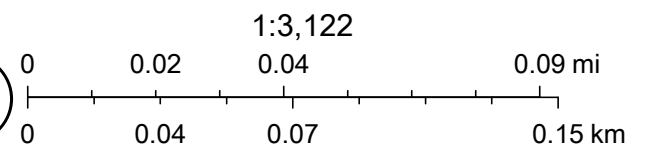
-  Decrease

-  Increase
-  Current SFHA Boundary
-  FLOODWAY (AE)
-  Preliminary SFHA Boundary
-  Non-Intersecting After Changes (141)

-  Intersected by SFHA Zones (A or AE)
- World Imagery
- Low Resolution 15m Imagery
- High Resolution 60cm Imagery
- High Resolution 30cm Imagery

Citations

60cm Resolution Metadata



Maxar, Microsoft, Dickinson Engineering Department, Esri Community Maps Contributors, State of North Dakota, © OpenStreetMap, Microsoft, Esri, HERE, Garmin, SafeGraph, GeoTechnologies, Inc, METI/NASA, USGS, EPA, NPS, US Census