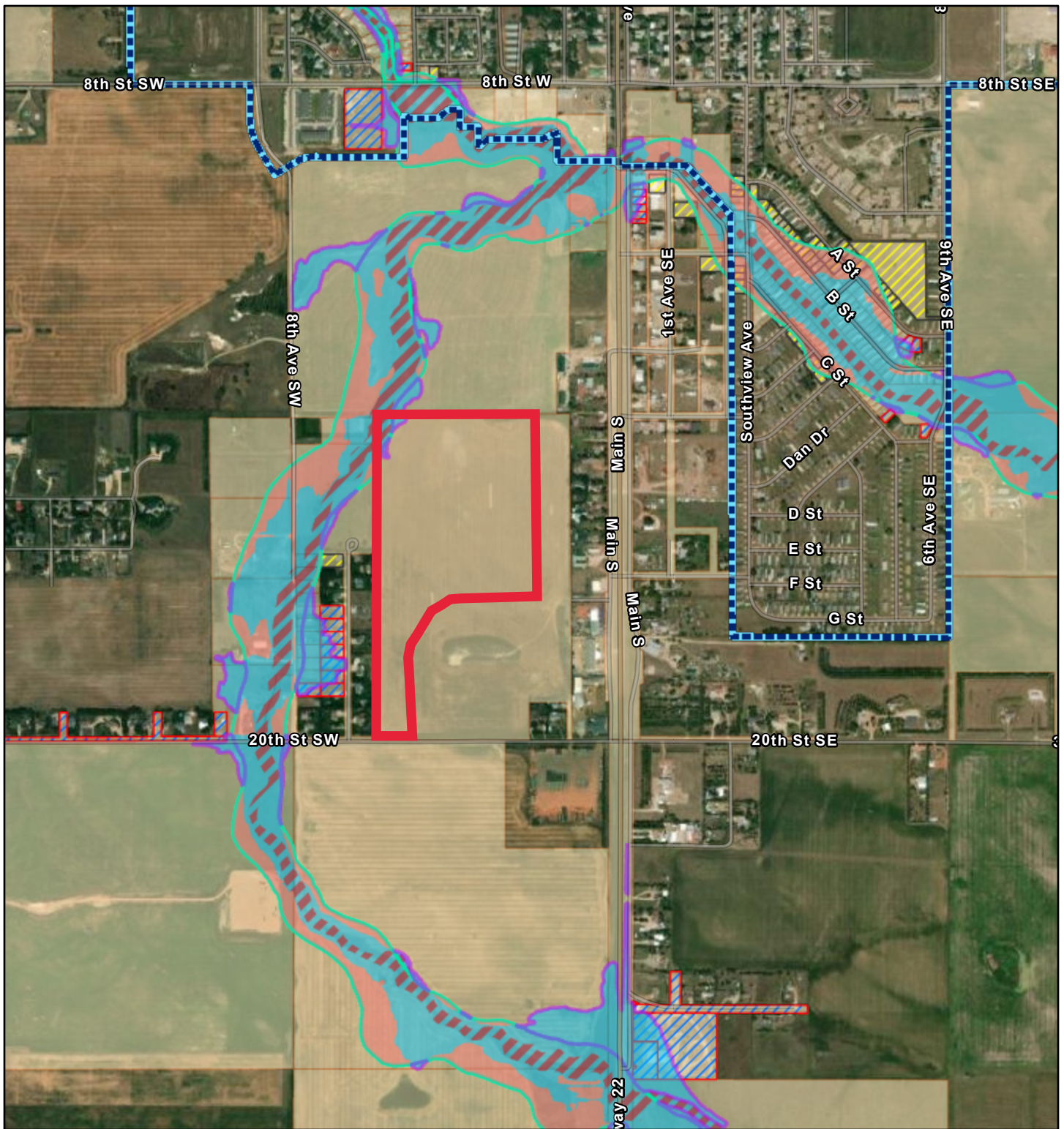


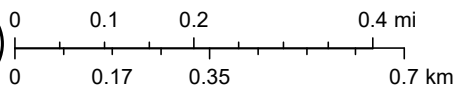
# FEMA Flood Hazard Changes Map



3/26/2024

1:19,849

- |                                |  |                                     |
|--------------------------------|--|-------------------------------------|
| Municipal Boundary             | FLOODWAY (AE)                          | Intersected by SFHA Zones (A or AE) |
| Extra Territorial Boundary     | Preliminary SFHA Boundary              | World Imagery                       |
| North Dakota County Boundaries | Non-Intersecting After Changes (141)   | Low Resolution 15m Imagery          |
| SFHA Area Changes              | Newly Intersecting After Changes (154) | High Resolution 60cm Imagery        |
| Decrease                       | Intersected by SFHA Zones (A or AE)    | High Resolution 30cm Imagery        |
| Increase                       | Non-Intersecting After Changes (22)    | Citations                           |
| Current SFHA Boundary          | Newly Intersecting After Changes (89)  | 4.8m Resolution Metadata            |



State of North Dakota, Esri, TomTom, Garmin, SafeGraph, GeoTechnologies, Inc, METI/NASA, USGS, EPA, NPS, US Census Bureau, USDA, USFWS, Dickinson Engineering Department, Maxar