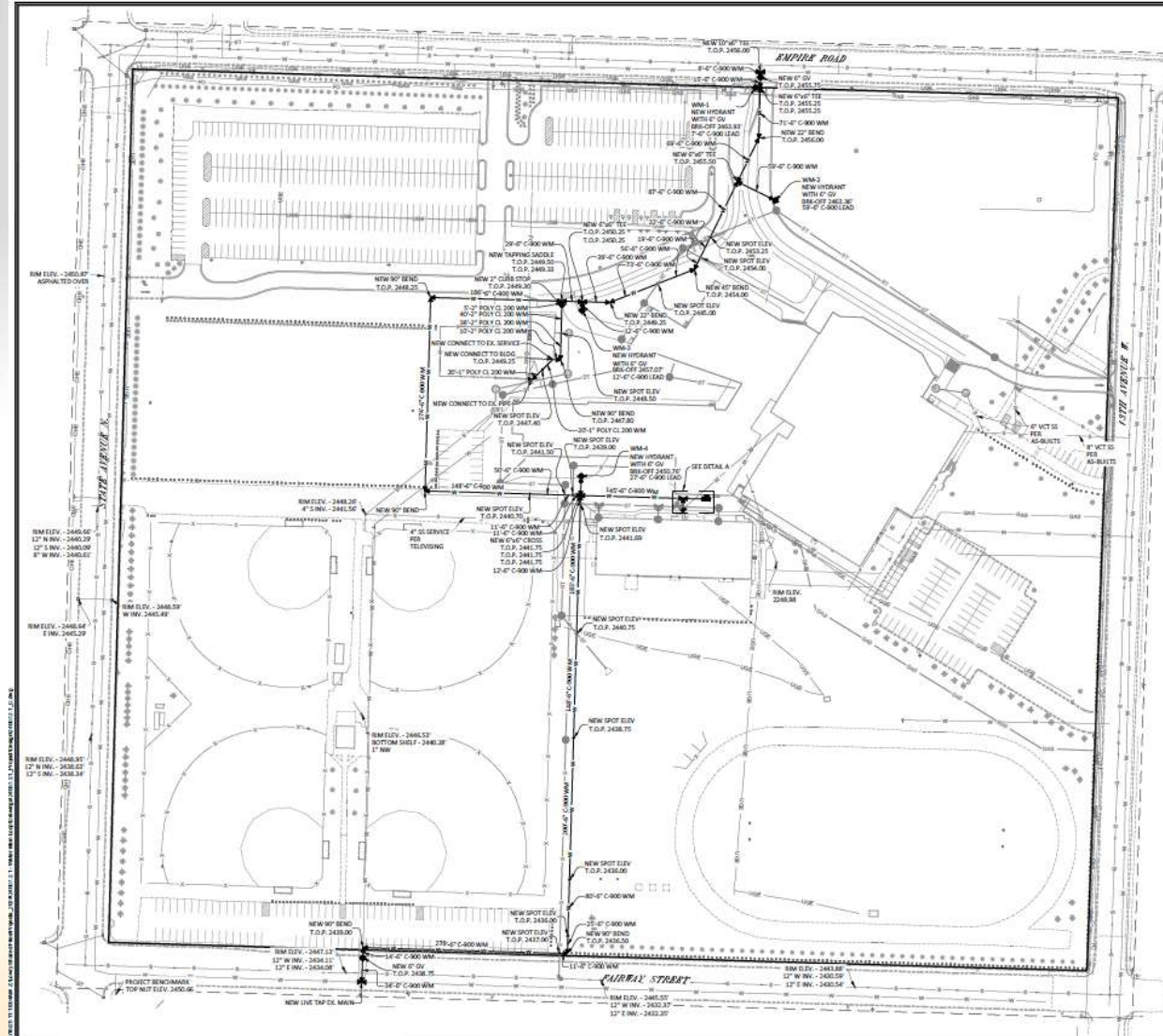


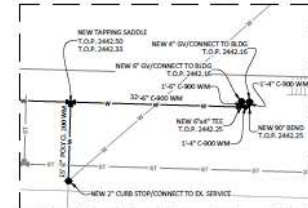
# Dickinson High School Watermain Extension: Project 202511

APPROXIMATELY 2,100 LF OF  
NEW 6-INCH PVC MAIN TO BE  
INSTALLED WITH THE PROJECT

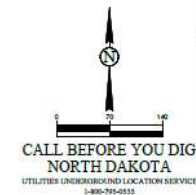


ESTIMATED WATER QUANTITIES		
ITEM	QUANTITY	UNIT
CONNECT TO EX. MAIN	2	EA
12" POLY PIPE	40	LF
12" POLY PIPE	308	LF
6" C900 PIPE	3	LF
6" C900 PIPE	2,446	LF
2" CURB STOP	2	EA
6" GATE VALVE	1	EA
6" GATE VALVE	7	EA
HYDRANT	4	EA

- NOTES
1. CONTRACTOR SHALL COORDINATE WITH SCHOOL PROJECT MECHANICAL/PLUMBER FOR CONNECTING AT BUILDING.
  2. CONTRACTOR SHALL MAINTAIN A MINIMUM 18" VERTICAL CLEARANCE BETWEEN SANITARY SEWER AND WATER LINE, AND STORM SEWER AND WATER LINE. IF CLEARANCE IS LESS THAN 7', INSULATION IS REQUIRED.
  3. CONTRACTOR SHALL MAINTAIN A MINIMUM OF 12" HORIZONTAL SEPARATION BETWEEN SANITARY SEWER AND WATER LINE, AND STORM SEWER AND WATER LINE. INSULATION SHALL BE INCIDENTAL TO BID PRICE FOR PIPE.
  4. CONTRACTOR SHALL COORDINATE WITH MECHANICAL/PLUMBER FOR PRESSURE ZONE CHANGES BEFORE CONNECTING TO BUILDING.
  5. ALL FITTINGS SHALL BE CONSIDERED INCIDENTAL TO BID PRICE FOR PIPE.
  6. PHASING SHALL BE ANTICIPATED AND DICTATED BY SCHOOL PROJECT CONSTRUCTION MANAGER. SEE DUNN CONSTRUCTION, DUSTIN TWOGOOD, PH: 701-502-1798, EMAIL: DUSTIN.TWOGOOD@DUNN.COM.



A WATER SERVICE CONNECTION  
1" = 10'



CALL BEFORE YOU DIG  
NORTH DAKOTA  
UTILITIES UNDERGROUND LOCATION SERVICE  
1-800-769-4555

LOWRY  
ENGINEERING  
505 WEST AVENUE SOUTH SUITE A  
FARGO, NORTH DAKOTA 58103

DICKINSON HIGH SCHOOL  
WATERMAIN EXTENSION  
979 13TH AVE W  
DICKINSON, ND

NOT FOR  
CONSTRUCTION

LE JOB # 24007.2.1  
PROJECT DATE: 03/03/2025  
CHECKED BY: JML  
DRAWN BY: TWY  
APPROVED BY: JML

UTILITY  
PLAN

C-5.0