

Entrance Signs

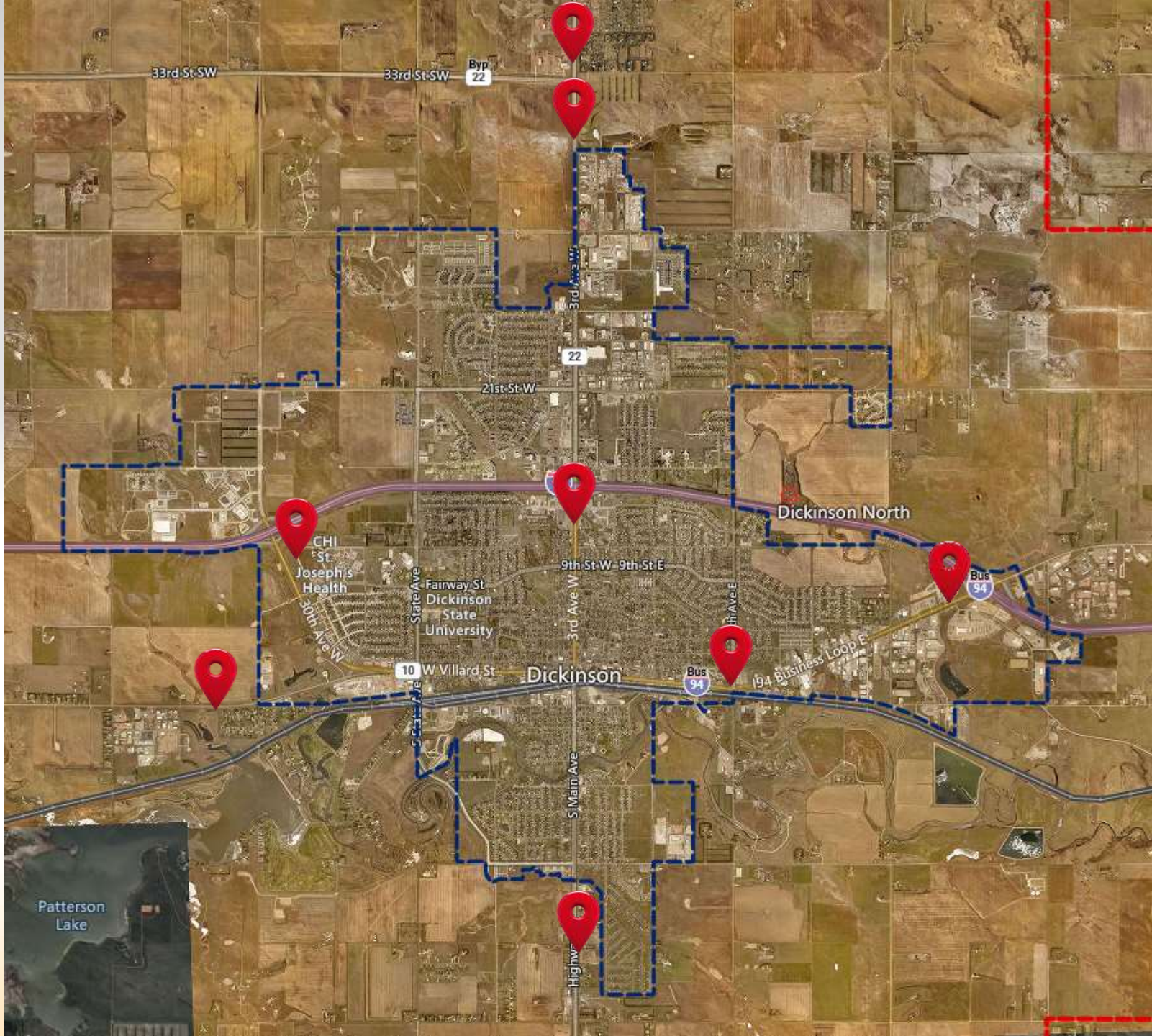
Presented by: Loretta A. Marshik, Assistant City Engineer
Wednesday, December 20, 2023

Traditional Gateway Marker



Potential Entrance Sign Locations

- Natural entry points create a welcoming sense of arrival
- Optimal positioning for maximum visibility without causing distractions
- Clear line of sight for approaching motorists





North Entrance Sign Location



South Entrance Sign Location



West Hwy 10 Entrance Sign Location



West Business Loop Entrance Sign Location



10th Ave E & Villard Sign Location



Financial Information

Project Estimate: \$500,000, Class 5 estimate class

Anticipated Outlay:	2023	2024
	\$30,000	\$470,000

Funding Options: Sales tax (30% of the 1%)



Project Analysis

Pros: Enhances city aesthetics & visual identity
Improves wayfinding
Boosts civic pride & community branding

Cons: High initial investment
Ongoing maintenance costs

Wants: Eye-catching design elements
Innovative lighting features
Landscaping around the sign

Needs: Clear wayfinding information
Sustainable materials & installation



RISKS of Project Delay

- Increased Project Costs
- Missed Touristic Appeal

Thank you!

QUESTIONS AND COMMENTS ARE WELCOME



www.DickinsonGov.com

