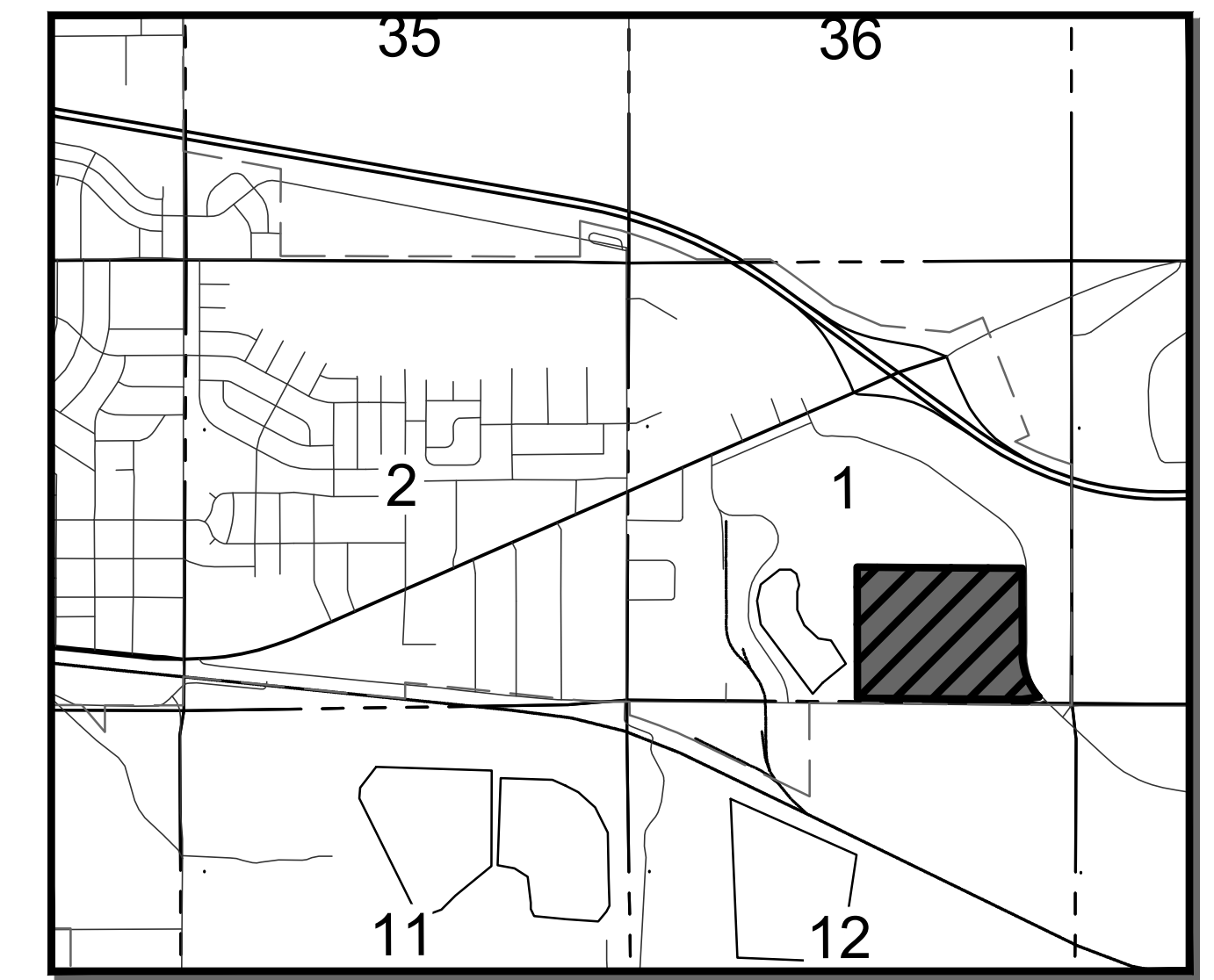


# ENERGY CENTER 6TH ADDITION

BEING THE REPLAT OF LOTS 1, 2, AND 1A, BLOCK 1, ENERGY CENTER 3RD ADDITION  
SE $\frac{1}{4}$  SECTION 1, T139N, R96W, OF THE 5TH PRINCIPAL MERIDIAN  
CITY OF DICKINSON, STARK COUNTY, NORTH DAKOTA



VICINITY MAP  
1" = 2000'

### LEGEND

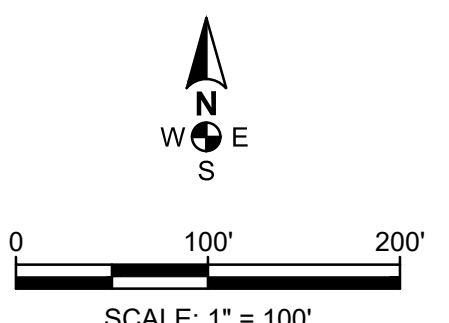
- PROPERTY BOUNDARY
- PROPOSED LOT LINES
- EXISTING LOT LINES
- EXISTING LOT LINES TO BE VACATED
- FOUND MONUMENT
- SET #5, 18-INCH REBAR & CAP STAMPED "HIGHLANDS LS-5466"
- SECTION LINE
- SECTION CORNER
- QUARTER CORNER
- PROPOSED EASEMENT CENTERLINE
- PROPOSED UTILITY EASEMENTS (15' WIDTH TYPICAL)
- PROPOSED DRAINAGE & SANITARY SEWER EASEMENTS
- PROPOSED SANITARY SEWER EASEMENT
- EXISTING EASEMENTS
- BUILDING SETBACK
- 5' MAJOR CONTOURS
- 1' MINOR CONTOURS
- 100-YEAR FLOODPLAIN
- SPECIAL FLOOD HAZARD AREA
- REGULATORY FLOODWAY

### PLAT NOTES

- 1) A PORTION OF THIS SUBDIVISION IS LOCATED WITHIN THE 1% ANNUAL CHANCE SPECIAL FLOOD HAZARD AREA AS SHOWN BY ZONE "AE" OF FEMA FLOOD INSURANCE RATE MAP (FIRM) NUMBER 38089C0213F, PANEL 213 OF 850, WITH AN EFFECTIVE DATE OF AUGUST 28, 2024.
- 2) THIS PLAT DEDICATES A TOTAL OF 1.28 ACRES OF PUBLIC RIGHT-OF-WAY ALONG THE NORTH SIDE OF E VILLARD STREET AS DEPICTED.
- 3) TRACT 1, BLOCK 1 AS SHOWN BY THIS PLAT SHALL BE RESERVED FOR STORMWATER MANAGEMENT AND PUBLIC INFRASTRUCTURE.
- 4) RECORDED DISTANCES SHOWN ARE REFERENCED TO THE ENERGY CENTER THIRD ADDITION PLAT AS RECORDED BY STARK COUNTY DOCUMENT NUMBER 326775, AND THE IRREGULAR PLAT OF LOT 1A OF LOT 1, BLOCK 1 OF ENERGY CENTER THIRD ADDITION AS RECORDED BY STARK COUNTY DOCUMENT NUMBER 3180587.
- 5) PREVIOUSLY PLATTED LOT LINES WITHIN THIS SUBDIVISION SHALL BE VACATED UPON APPROVAL OF THIS PLAT AND REPLACED WITH THE LOT LINES SHOWN

### SURVEY NOTES

- 1) DISTANCES SHOWN ARE MEASURED GROUND DISTANCES, INTERNATIONAL FOOT, DERIVED FROM A LOCAL COORDINATE SYSTEM.
- 2) SAID PROJECT HAS A CENTRAL MERIDIAN OF LATITUDE: 46°51'42.38098" / LONGITUDE: 102°47'24.24924". BEARINGS ARE BASED ON TRUE NORTH AT THIS LOCATION.
- 3) VERTICAL DATUM: NAVD 88, GEOID 03



**HIGHLANDS ENGINEERING**  
319 24TH STREET EAST, DICKINSON, ND 58601  
OFFICE: 701.483.2444 | WWW.HIGHLANDSENG.COM

PROJECT NUMBER: 241279	SCALE: 1"=100'
DRAWN BY: AWS	DATE: 02/12/26
SHEET: 1 OF 1	