

Snow Removal Operations

Presented by: Jake Waldo, Deputy Public Works Director



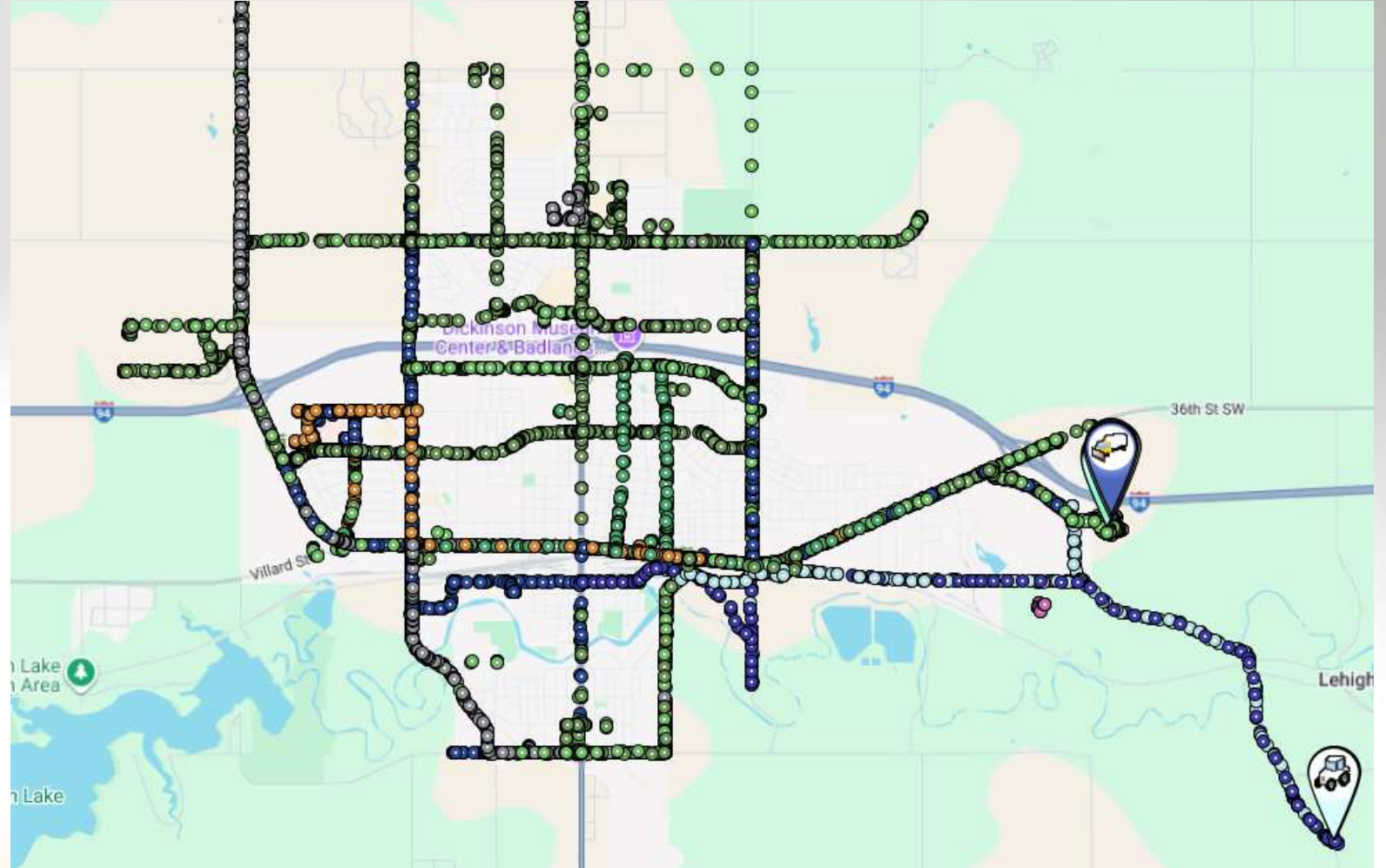
Winter Arrived Earlier this Year:

- Several snow events have already passed.
- Most ($\approx 1''$) limited response
- 2nd storm ($\approx 8-9''$) larger response



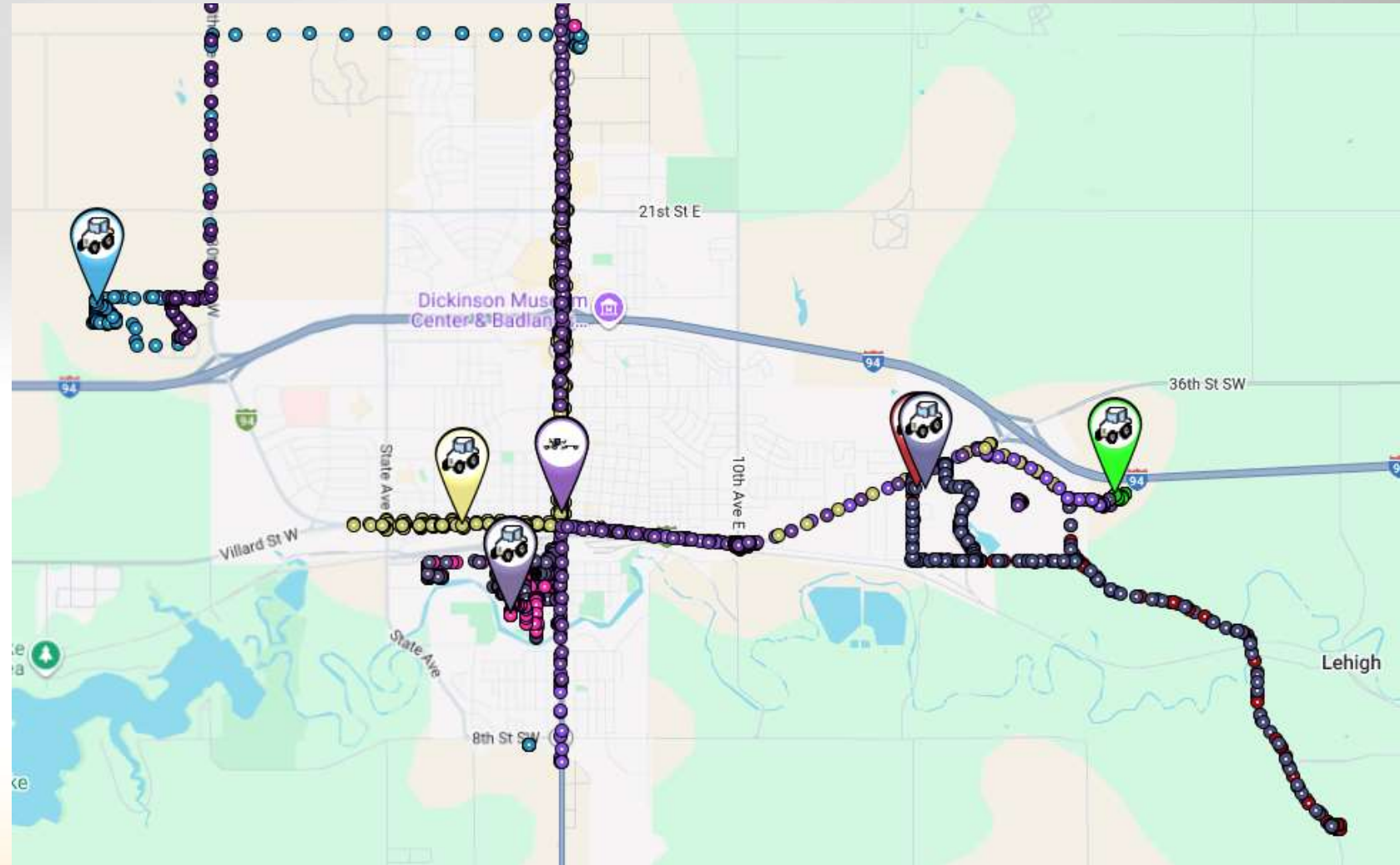
During The Storm:

- Maintain Level 1&2 Roadways (to the fullest extent possible)
- Monitor Continuously
- Plan Response

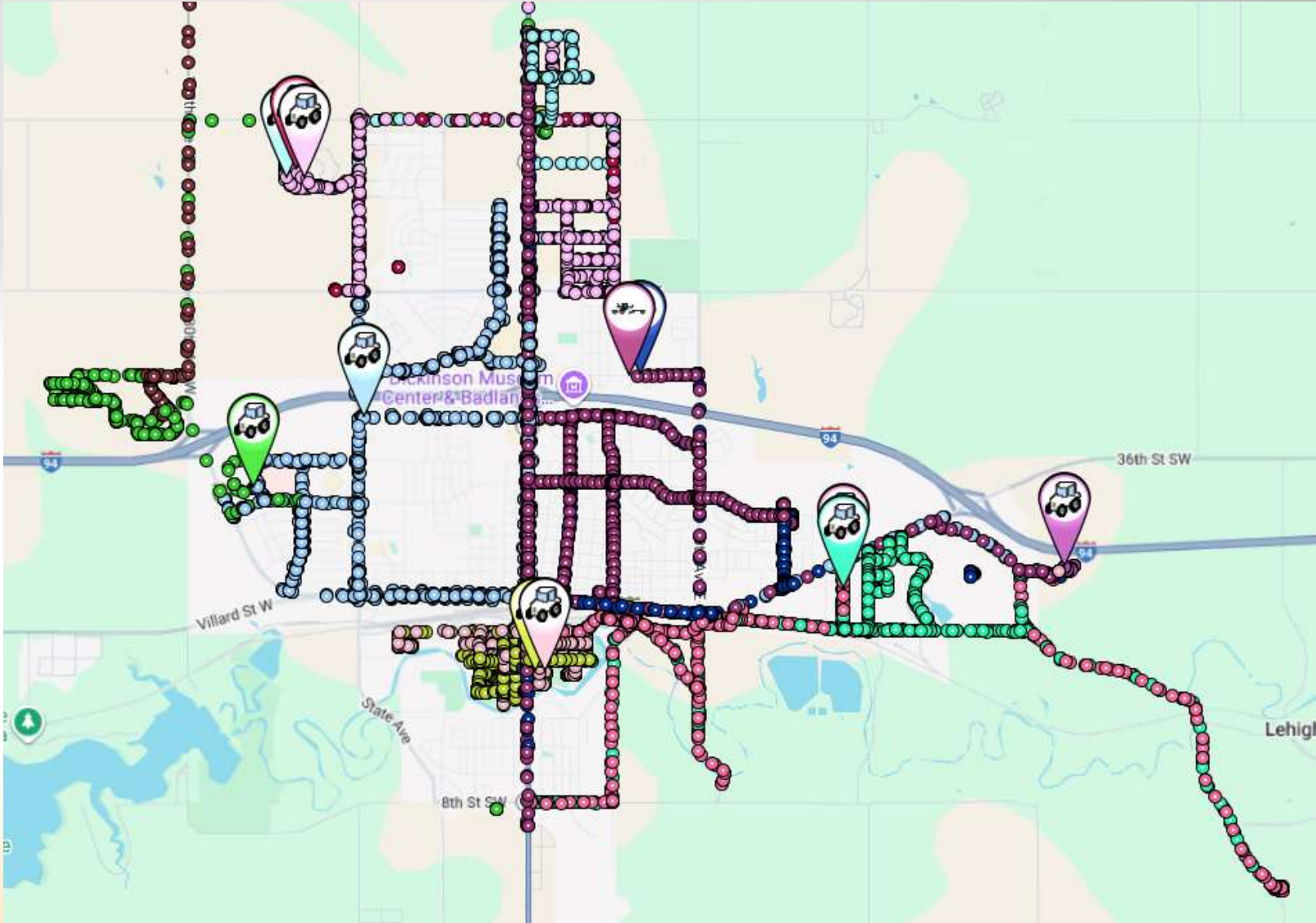


After the Storm: (3 hrs)

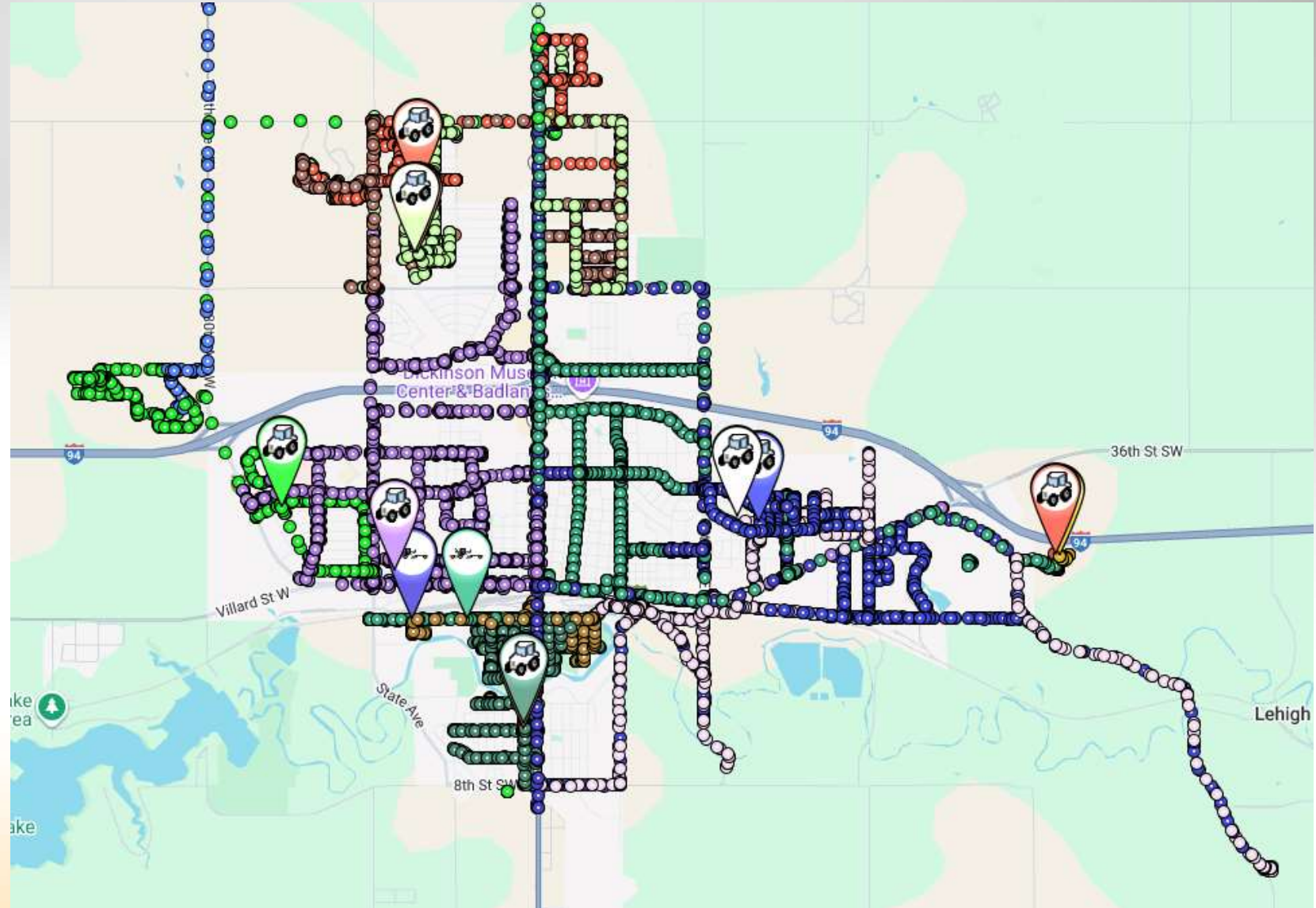
- Equipment begins clearing assigned routes
- Level 1&2 roadways are monitored by trucks (plows, sanders, brine units; not pictured)



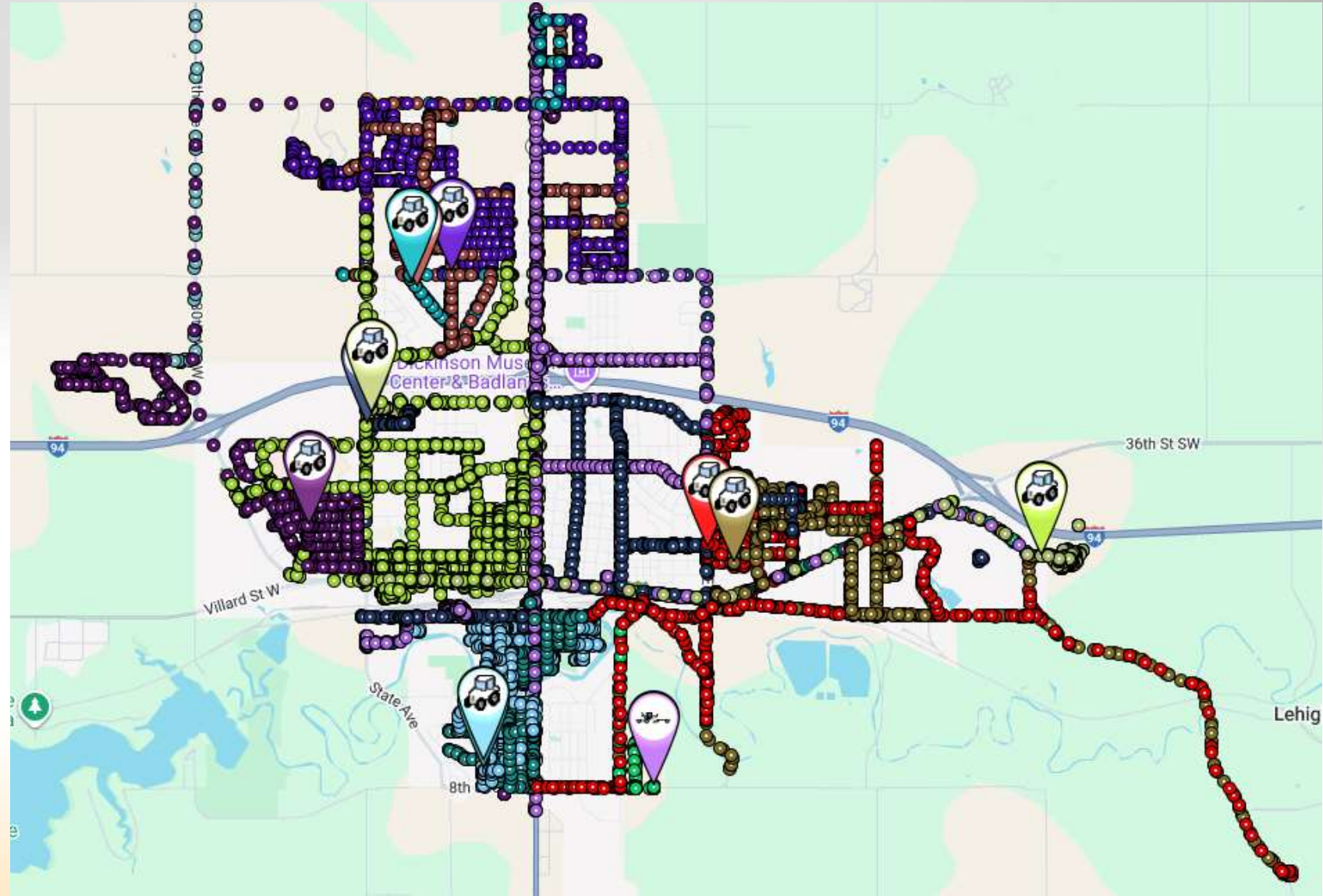
After the Storm: (6 hrs)



After the Storm: (9 hrs)

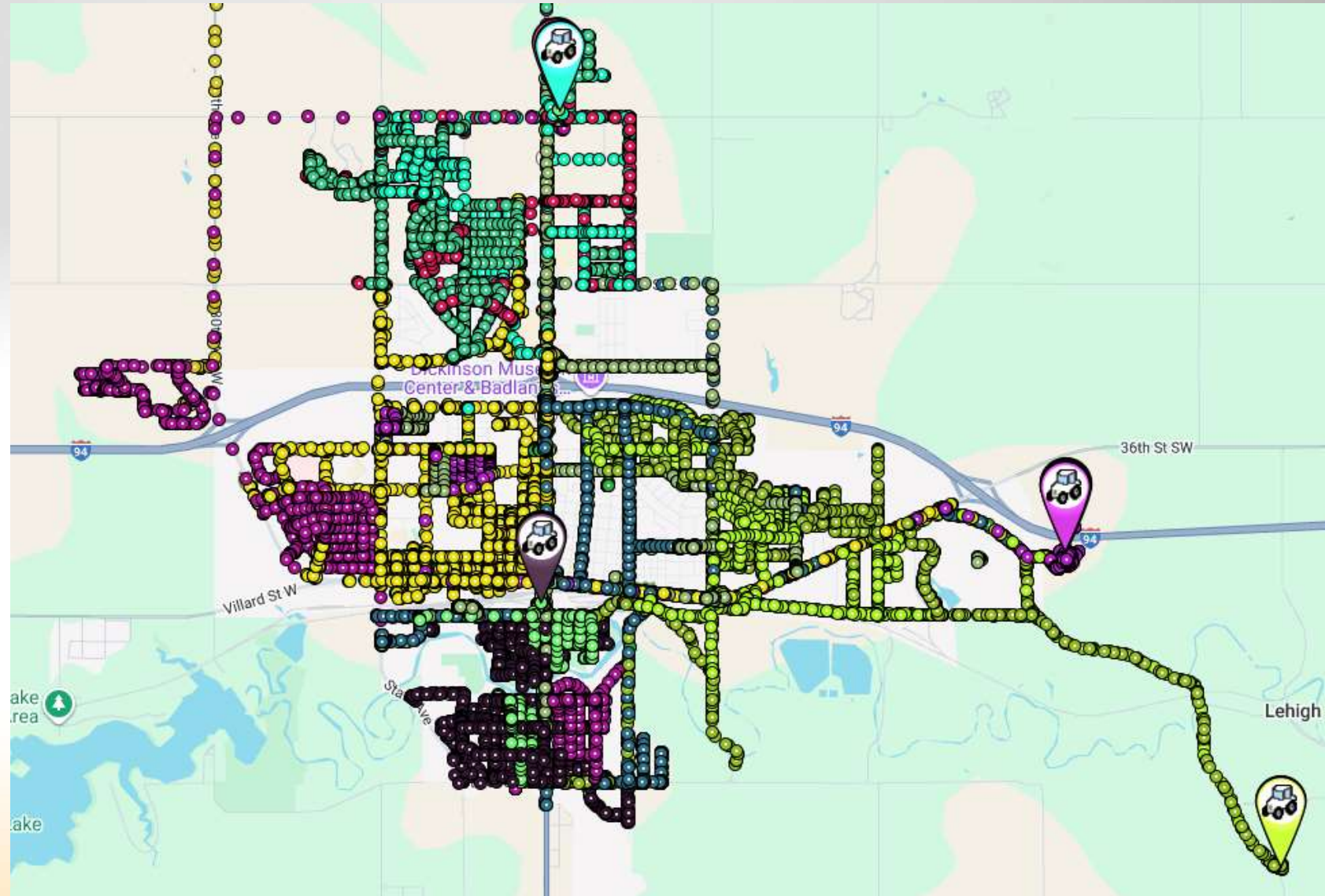


After the Storm: (12 hrs)

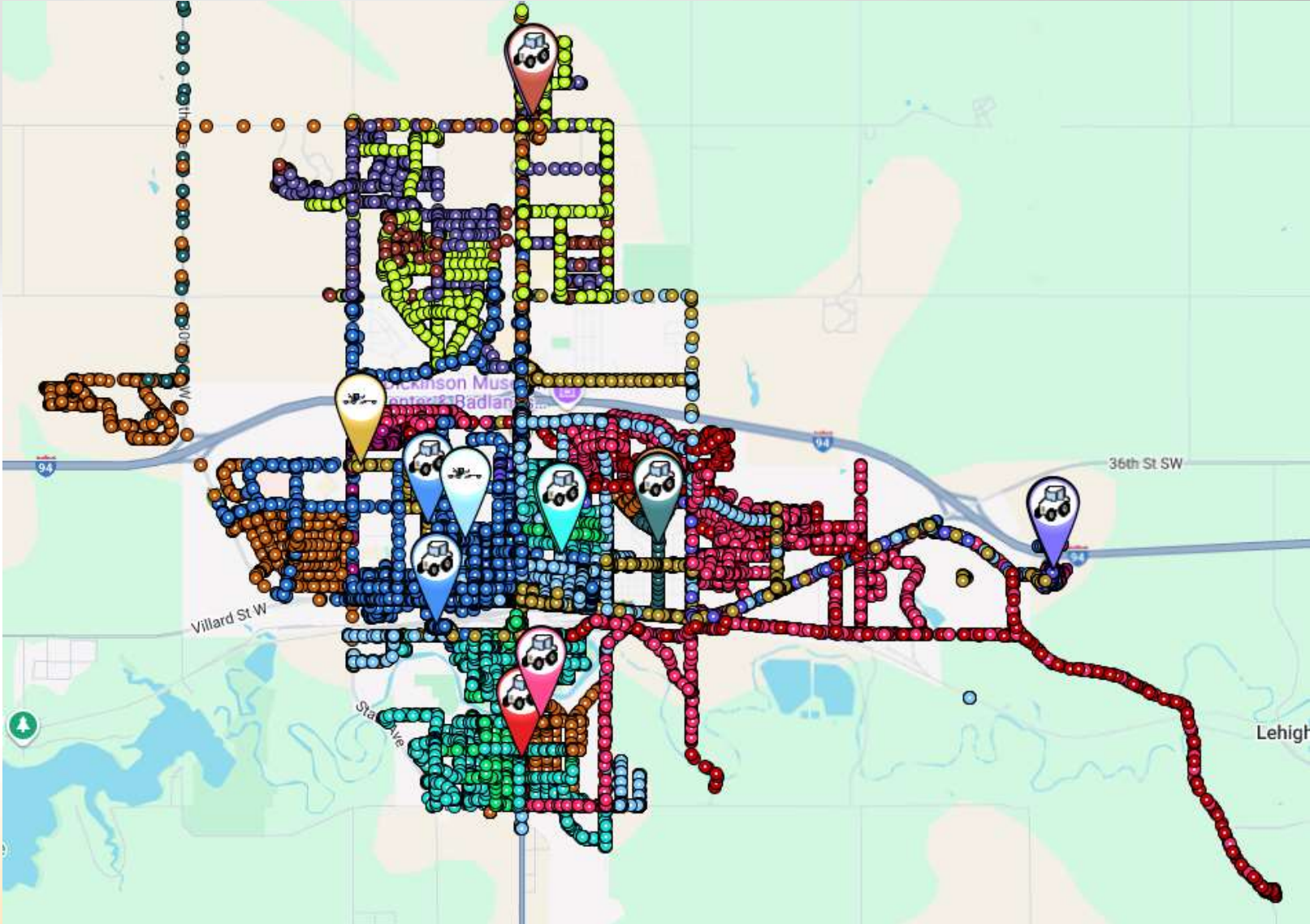


After the Storm: (14 hrs)

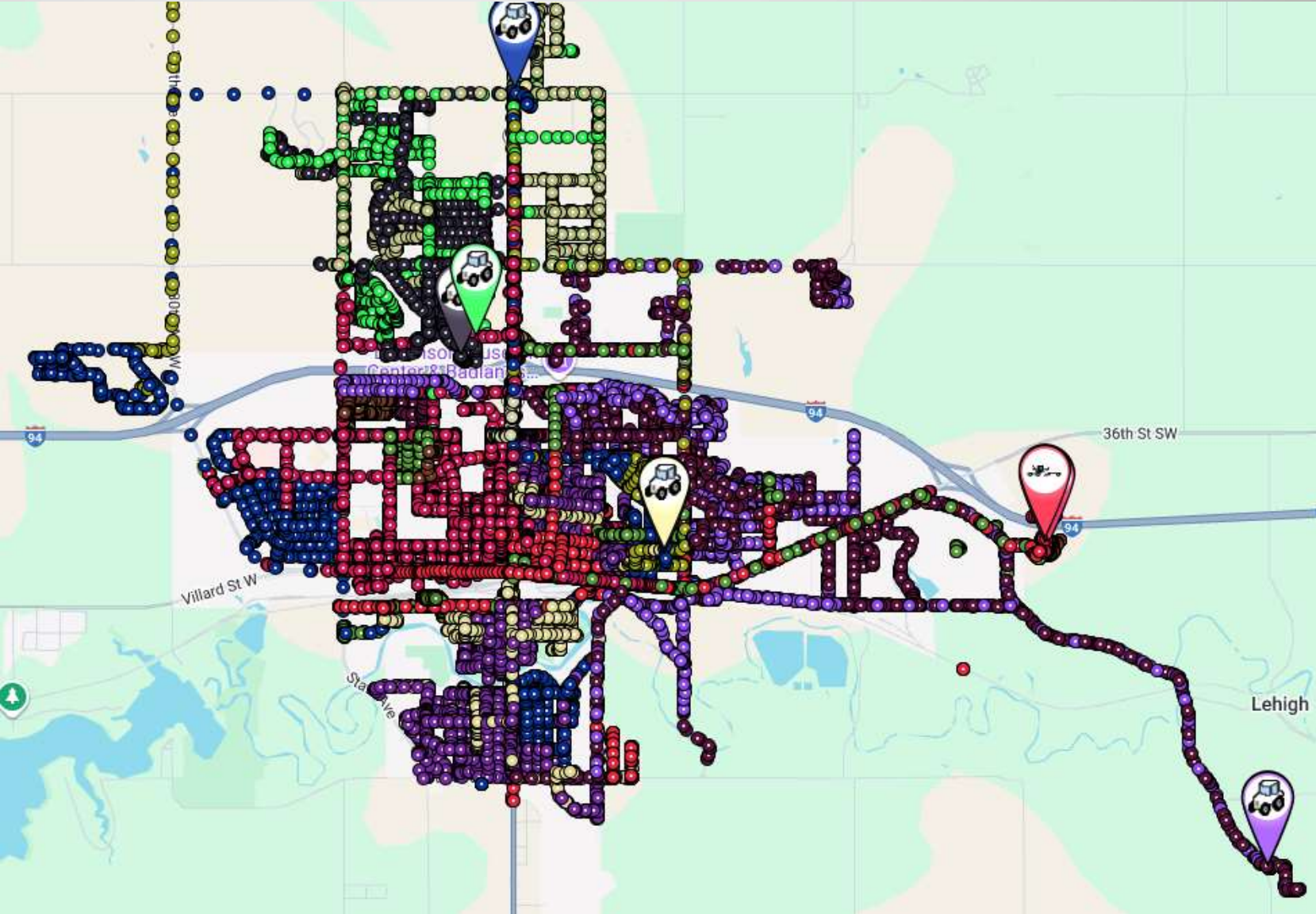
- Finished for the 1st day



After the Storm: (27 hrs)



Snow Removal Finished: (31 hrs)



Hauling Operations:

- Downtown, Schools, Congested Areas
- 250 Truck loads of snow from this last storm.
- Started @2:00 AM Sunday, finished ≈12:00 PM



Costs Incurred:

- Total Cost for This Storm ≈ \$143,000
- Contracted Labor ≈ \$41,000
- Equipment Hours ≈ \$82,000
- Public Works Labor ≈ \$20,000
- Incidentals and Supplies Unfigured at this time.



Future Storms:

- Remove vehicles from street (if possible) during or immediately after storm to allow for complete plowing.
- Similar snow removal structure to the storm we just had.
- We are working to enhance communication around plowing.



Questions?