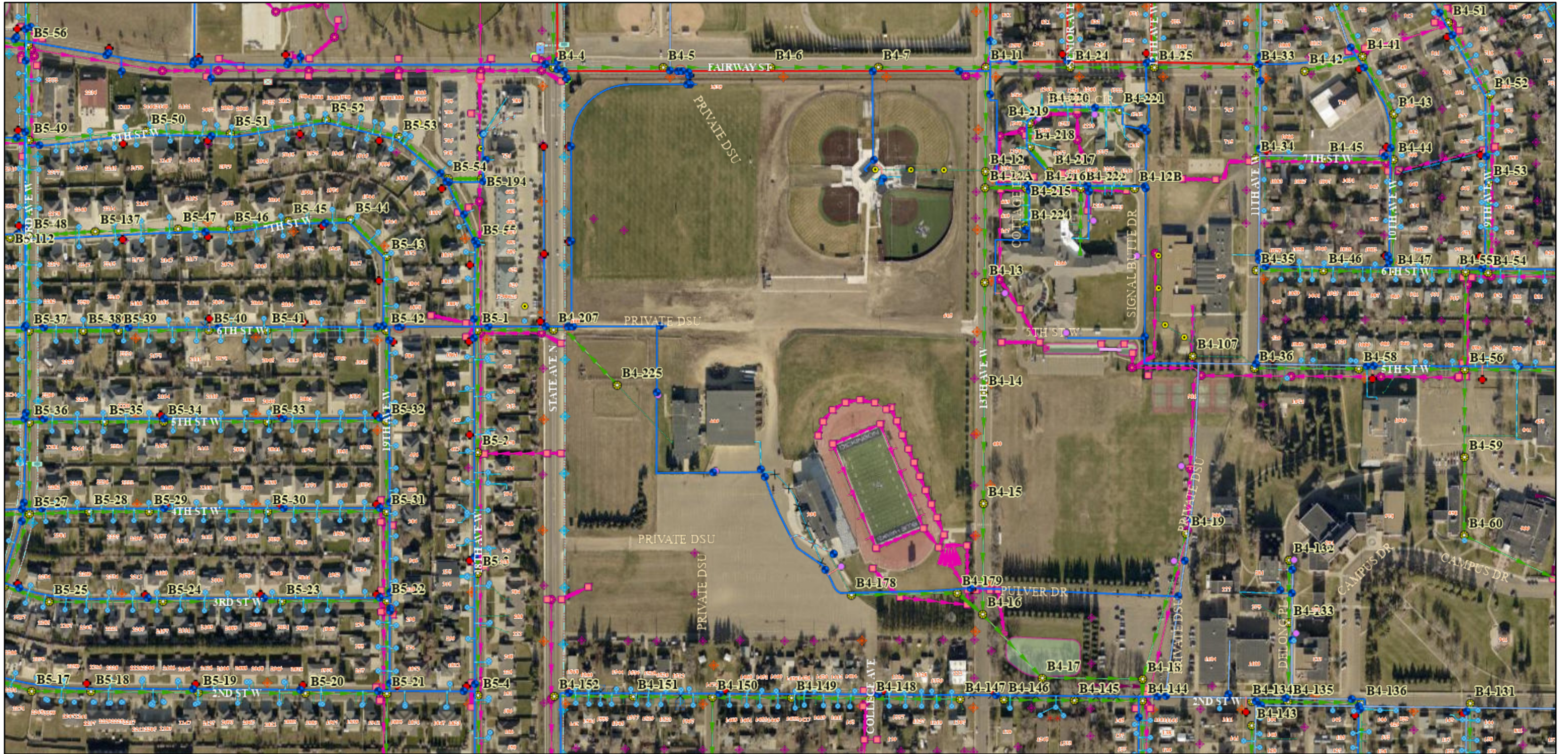
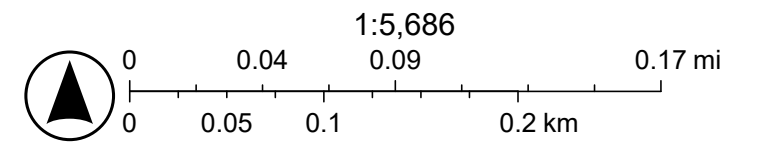


Dickinson Utility Information Map



4/4/2024

- | | | | | | |
|---------------------------|---------------------|------------------------|------------------------------------|--|------------------------------|
| Public Street Names 8K | Water Manhole | Water Abandoned Points | Storm Manholes | Street Lighting, Montana Dakota Utilities | Electric Lines |
| Private Street Names | Water Lateral Lines | Water Abandoned Lines | Storm Network Structure | General Lighting, Montana Dakota Utilities | World Imagery |
| Water Tracer Wire Station | Fire | Sanitary Clean Outs | Storm Gravity Mains | Signal, City of Dickinson | Low Resolution 15m Imagery |
| Water Curb Stop Valve | Hydrant | Sanitary Manhole | Storm Culverts | Other Pole Categories | High Resolution 60cm Imagery |
| Water System Valve | Service | Sanitary Lateral Lines | Storm Open Drains | Electric Access Points | High Resolution 30cm Imagery |
| Water Hydrant | Water Main Lines | Sanitary Gravity Mains | Storm Detention Structures | Pull Box | Citations |
| City of Dickinson | Polyvinyl Chloride | Storm Inlets | Poles | Service Box | 1.2m Resolution Metadata |
| Private or Other | Cast Iron | Storm Discharge | Street Lighting, City of Dickinson | Signal Controller | |
| | Asbestos Cement | | | | |



Pictometry International, Eagleview, City of Dickinson, Dickinson Engineering Department, Maxar