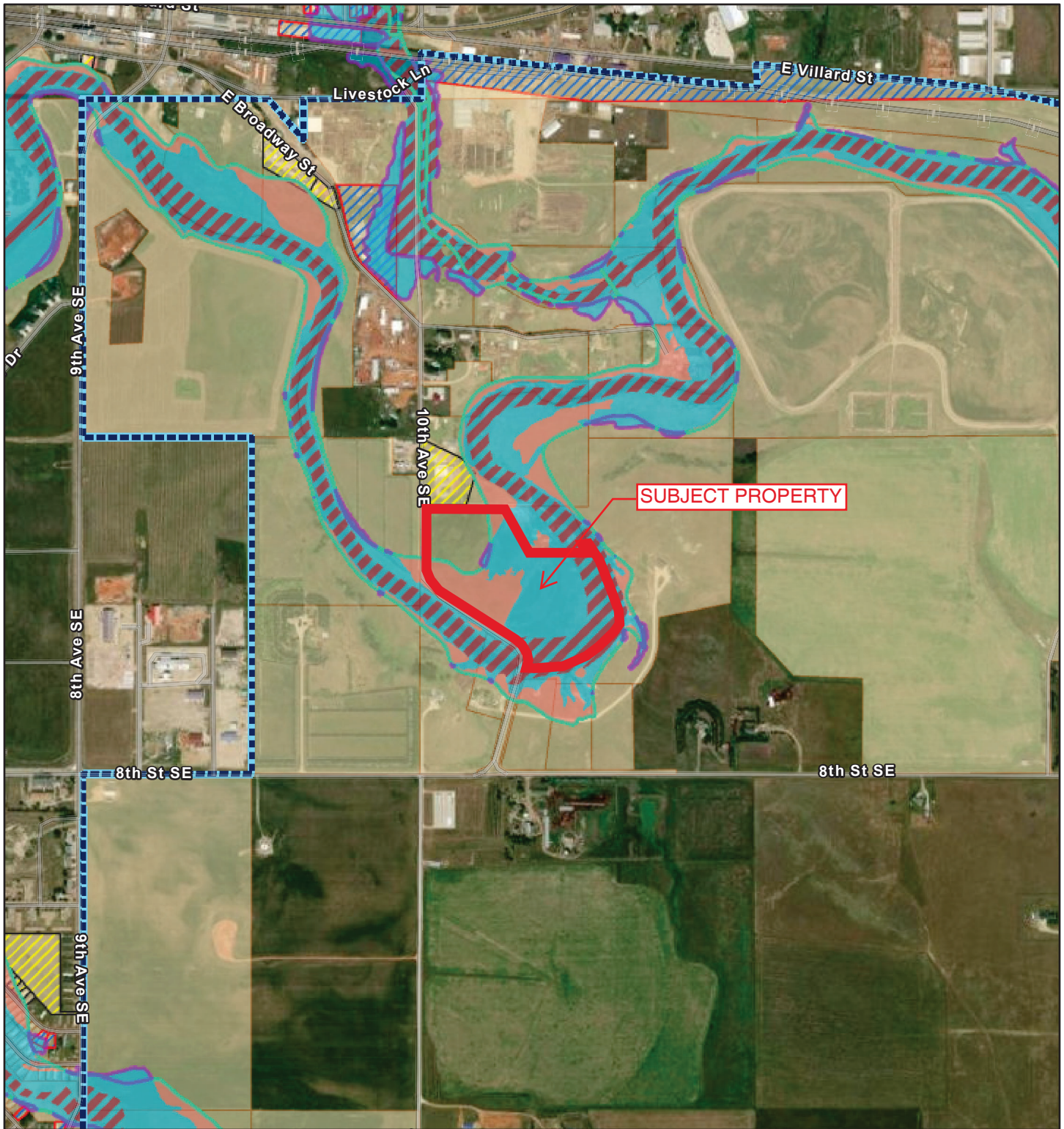


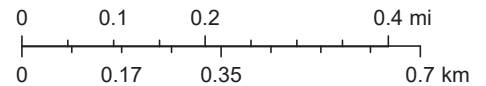
FEMA Flood Hazard Changes Map



1/17/2024

1:19,398

- | | | |
|--------------------------------|--|-------------------------------------|
| Municipal Boundary | FLOODWAY (AE) | Intersected by SFHA Zones (A or AE) |
| Extra Territorial Boundary | Preliminary SFHA Boundary | World Imagery |
| North Dakota County Boundaries | Non-Intersecting After Changes (141) | Low Resolution 15m Imagery |
| SFHA Area Changes | | |
| Decrease | Newly Intersecting After Changes (154) | High Resolution 60cm Imagery |
| Increase | Intersected by SFHA Zones (A or AE) | High Resolution 30cm Imagery |
| Current SFHA Boundary | Non-Intersecting After Changes (22) | Citations |
| | Newly Intersecting After Changes (89) | 4.8m Resolution Metadata |



State of North Dakota, Esri, TomTom, Garmin, SafeGraph, GeoTechnologies, Inc, METI/NASA, USGS, EPA, NPS, US Census Bureau, USDA, USFWS, Dickinson Engineering Department, Maxar