

# 2024 Road Maintenance

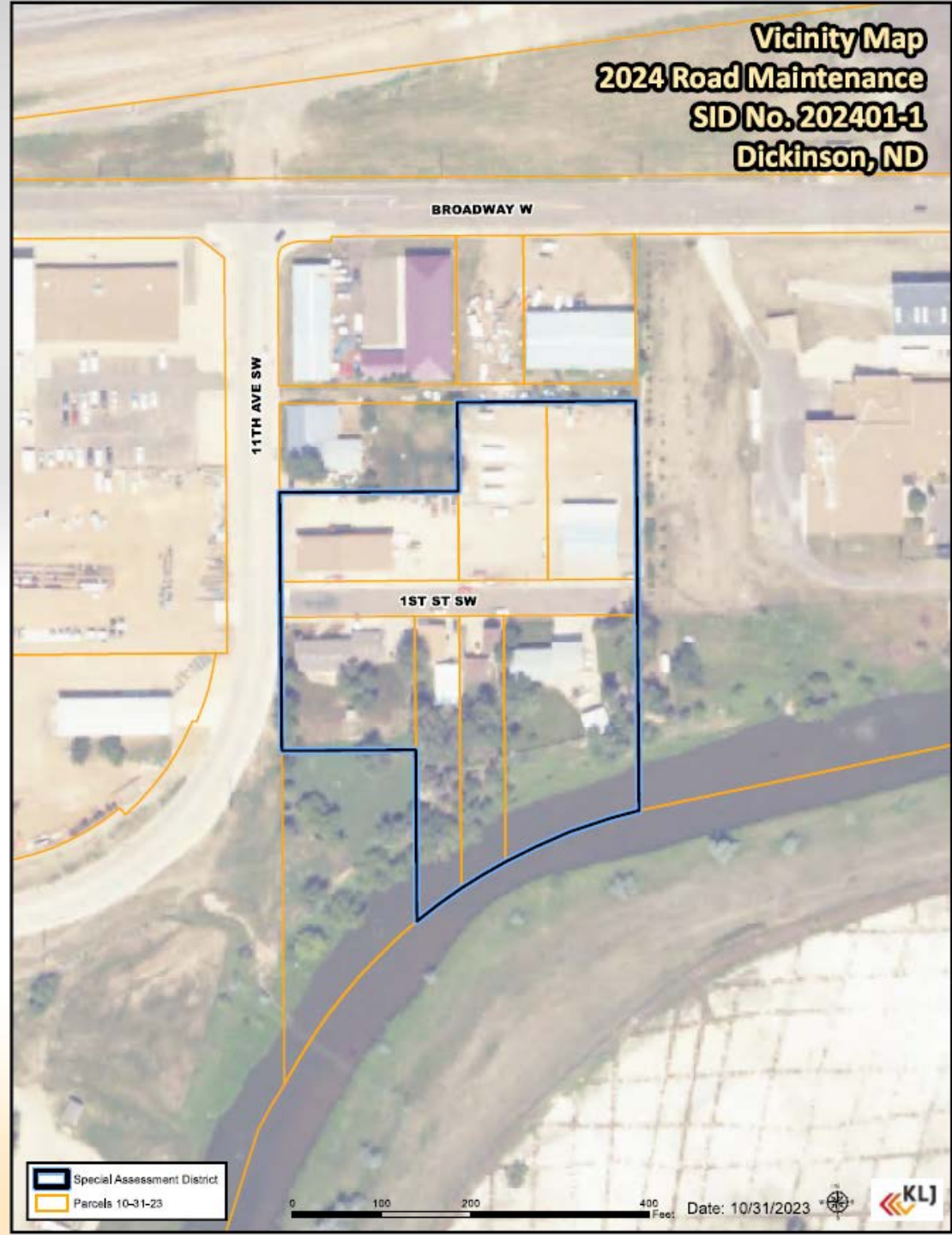
Special Improvement Districts

&

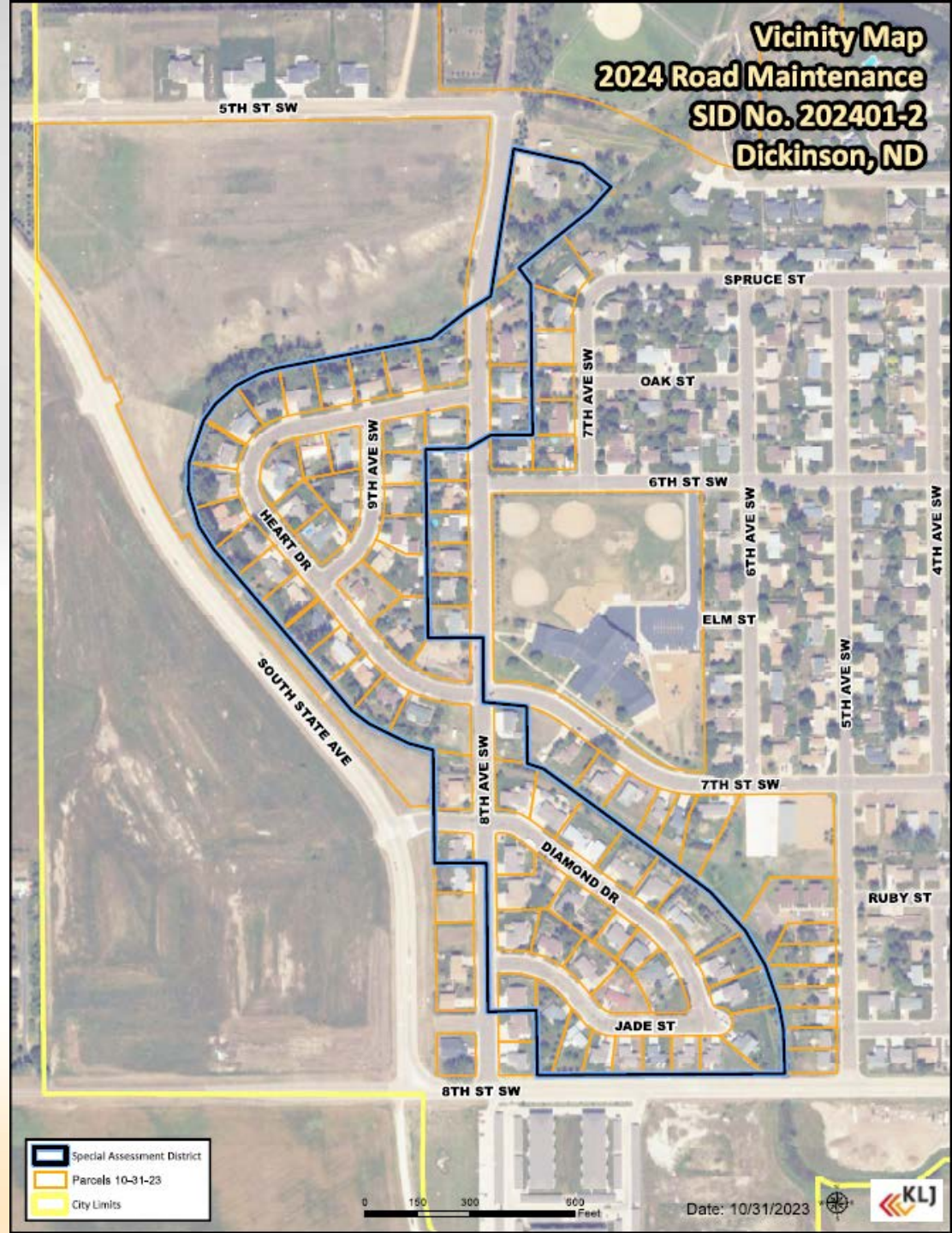
Preliminary Engineering Report



# SID No. 202401-1



# SID No. 202401-2



# Estimated Cost

Only assessed areas are included in the estimate.



## ENGINEER'S OPINION OF PROBABLE CONSTRUCTION COST

DICKINSON 2024 ROAD MAINTENANCE (CITY PROJECT NO. 202401)  
CITY OF DICKINSON, NORTH DAKOTA

Item No.	Description	Unit	Total Quantity	Unit Cost	Total Sum
1	MOBILIZATION & CONTRACT BOND	LS	1	\$ 181,061.00	\$ 181,061.00
2*	REMOVAL OF CONCRETE	SY	986	\$ 32.00	\$ 31,552.00
3*	REMOVAL OF CURB & GUTTER	LF	4,014	\$ 8.00	\$ 32,112.00
4	REMOVAL OF BITUMINOUS SURFACING	SY	9,319	\$ 13.00	\$ 121,147.00
5	GEOSYNTHETIC MATERIAL TYPE R1	SY	9,304	\$ 4.50	\$ 41,868.00
6	AGGREGATE BASE COURSE - CL. 5	CY	3,104	\$ 100.00	\$ 310,400.00
7*	CURB & GUTTER	LF	4,014	\$ 60.00	\$ 240,840.00
8*	CONCRETE SIDEWALK	SY	1,003	\$ 115.00	\$ 115,345.00
9*	CONCRETE DRIVEWAY 6IN	SY	157	\$ 145.00	\$ 22,765.00
10	CONCRETE VALLEY GUTTER	SY	220	\$ 215.00	\$ 47,300.00
11	DETECTABLE WARNING PANEL	SF	90	\$ 40.00	\$ 3,600.00
12	MILLING PAVEMENT SURFACE	SY	13,768	\$ 5.00	\$ 68,840.00
13	ADJUST MANHOLE	EA	21	\$ 2,250.00	\$ 47,250.00
14	ADJUST GATE VALVE BOX	EA	12	\$ 925.00	\$ 11,100.00
15	ADJUST INLET	EA	4	\$ 500.00	\$ 2,000.00
16	ASPHALT REPAIR	TON	2,070	\$ 190.00	\$ 393,300.00
17	ASPHALT PAVEMENT	TON	1,832	\$ 160.00	\$ 293,120.00
18	FLAGGING	MH	290	\$ 60.00	\$ 17,400.00
19	TRAFFIC CONTROL	LS	1	\$ 65,000.00	\$ 65,000.00
Construction Subtotal					\$ 2,046,000.00

5% Contingency \$ 102,300.00  
**Opinion of Construction Cost \$ 2,148,300.00**

\*Eligible for special assessment

November 15, 2023  
 KLJ Project No. 2304-01041

