

972 Dell Avenue

Presented by: Attorney Wenko

Request to Appeal







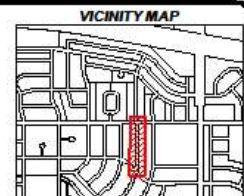
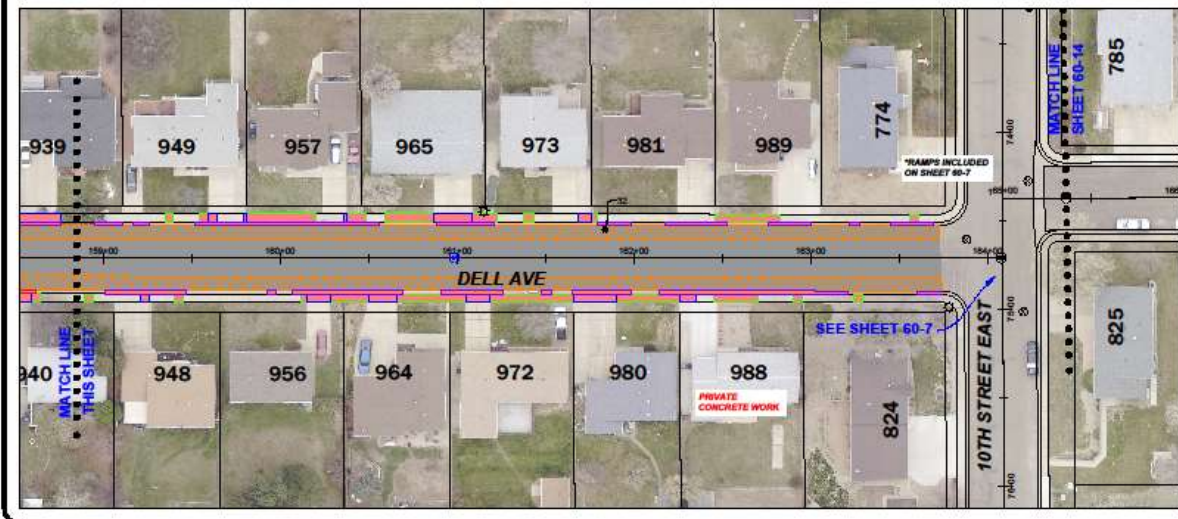
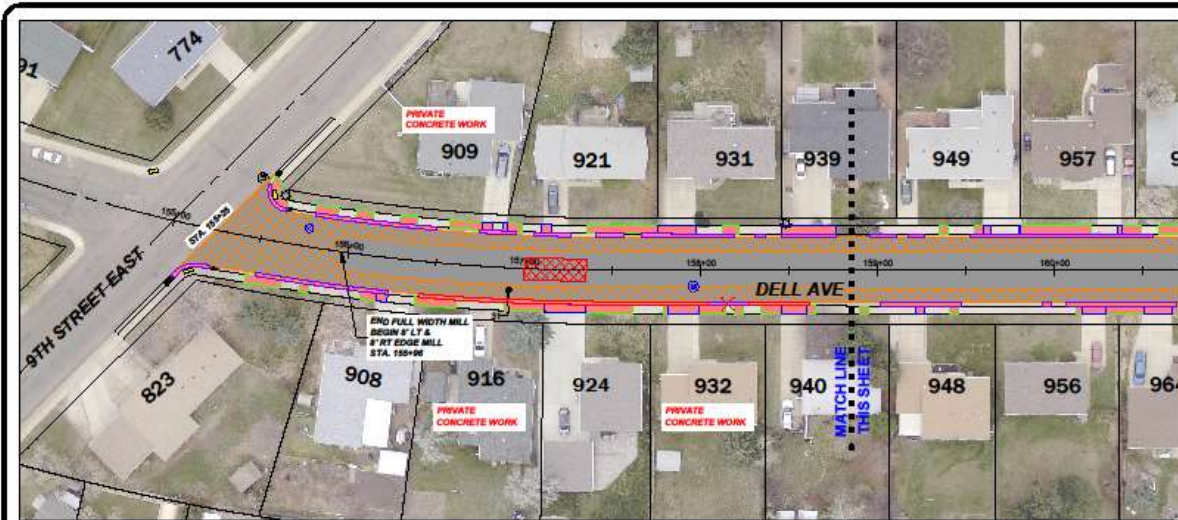
Jun 27, 2024, 10:11 AM



Jul 24, 2024, 10:33 AM





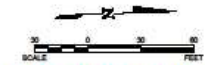


LEGEND

- REMOVAL OF CONCRETE/ CURBS & GUTTER
- REMOVAL OF BITUMINOUS SURFACING
- MILLING AREA
- CURBS & GUTTER
- CONCRETE SIDEWALK
- CONCRETE DRIVEWAY
- CONCRETE VALLEY GUTTER
- PAVING AREA
- ADJUST GATE VALVE
- ADJUST MANHOLE
- ADJUST INLET
- CORE LOCATION


QUANTITIES THIS SHEET

| | |
|--|------------|
| REMOVAL OF CONCRETE | 432 S.Y. |
| REMOVAL OF CURBS & GUTTER | 1,129 L.F. |
| CURBS & GUTTER | 1,129 L.F. |
| CONCRETE SIDEWALK | 310 S.Y. |
| CONCRETE DRIVEWAY 6" | 122 S.Y. |
| DETECTABLE WARNING PANEL | 10 S.F. |
| DETECTABLE WARNING PANEL - SURFACE APPLIED | 20 S.F. |
| MILLING PAVEMENT SURFACE | 1,693 S.Y. |
| ADJUST MANHOLE | 2 EA. |
| ADJUST GATE VALVE BOX | 1 EA. |
| ASPHALT PAVEMENT | 290 TON |



RECORD DRAWING
12/10/2021
CAH

AS-BUILT DRAWINGS



| | | | | |
|---------|------|-----|----|-----|
| REVISED | DATE | NO. | BY | CHK |
| | | | | |
| | | | | |
| | | | | |

2021 MILL & OVERLAY
 CITY OF DICKINSON
 DICKINSON, NORTH DAKOTA
 SID NO. 202101-1 - DELL AVENUE (1)

SHEET
 60-13
 8/17/2021