



Water | Transportation | Municipal | Facilities

# Preliminary Engineering Report

**2025 WATERMAIN AND LEAD SERVICE LINE REPLACEMENT PROJECT**

**SPECIAL IMPROVEMENT DISTRICT No. 202503-01**





Water | Transportation | Municipal | Facilities

# Preliminary Engineering Report

## 2025 WATERMAIN AND LEAD SERVICE LINE REPLACEMENT PROJECT

### SPECIAL IMPROVEMENT DISTRICT 202503-01

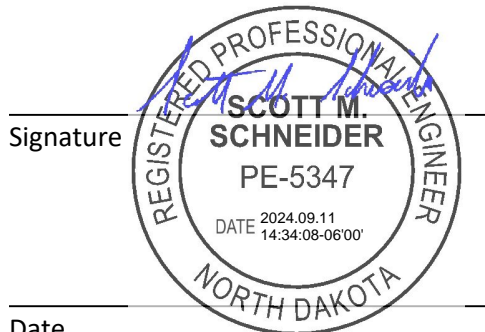
City of Dickinson Project No. CIP 202503

Apex Project Number 24.107.0026

#### CERTIFICATION

I hereby certify that this plan, specification, or report was prepared by me or under my direct supervision and that I am a duly Licensed Professional Engineer under the laws of the State of North Dakota.

Signature



Date

Scott M. Schneider

Typed or Printed Name

PE-5347

License Number

September 2024  
Apex Engineering Group, Inc.  
204 Sims St. – Suite 201  
Dickinson, ND 58601

## TABLE OF CONTENTS

TABLE OF CONTENTS .....	i
1.01 PROJECT BACKGROUND.....	Page 1
1.02 PROPOSED PROJECT IMPROVEMENTS AND PROJECT LIMITS.....	Page 1
1.03 PROJECT JUSTIFICATION .....	Page 1
1.04 SCHEDULE AND OPINION OF COST .....	Page 1
1.05 SID MAPS AND ESTIMATED SPECIAL ASSESSMENTS .....	Page 1
APPENDICES .....	Page 2
APPENDIX A - CITY OF DICKINSON SPECIAL ASSESSMENT POLICY	
APPENDIX B - OPINION OF PROBABLE CONSTRUCTION COST	
APPENDIX C - SID NO. 202503-01 DISTRICT MAP, PLAN DRAWINGS AND ASSESSMENT TABLE	

## 1.01 PROJECT BACKGROUND

This Special Improvement District (SID) 202503-01 is proposed to be constructed as part of the 2025 Watermain and Lead Service Line Replacement Project identified as City of Dickinson Project Number 202503. The project is included in the City's 2025 budget.

## 1.02 PROPOSED PROJECT IMPROVEMENTS AND PROJECT LIMITS

The 2025 Watermain and Lead Service Line Replacement Project will be constructed on the following streets:

- 1<sup>st</sup> Street West: Hollywood Blvd to 12<sup>th</sup> Ave West
- 2<sup>nd</sup> Street West: 12<sup>th</sup> Ave West to 10<sup>th</sup> Ave West
- 5<sup>th</sup> Street West: 7<sup>th</sup> to 8<sup>th</sup> Ave West
- 9<sup>th</sup> Avenue West: Villard St. to 2<sup>nd</sup> St West
- South 7<sup>th</sup> Ave West: Villard St, to the South extent of existing roadway
- South 10<sup>th</sup> Ave West: Villard St. to the South extent of existing roadway

As part of the watermain project, street improvements were also identified. The project will include concrete replacement consisting of curb, gutter, sidewalk and accessibility ramp construction where the watermain project affects ramps and an asphalt mill and overlay.

## 1.03 PROJECT JUSTIFICATION

The proposed SID will correct poor drainage along curb and gutter sections that have settled and deteriorated. The SID will also replace deteriorating driveways and sidewalks as well as correct deficiencies on pedestrian facilities where practical.

Creating the SID is in accordance with the City's Special Assessment Policy (see Appendix 1). The policy was approved (Resolution 39-2019) by the City Commission on December 17, 2019. The Policy gives the City authority to assess for constructing sidewalks, curb and gutter, and driveway aprons in conjunction with street maintenance projects. As such, the proposed SID will include removal and replacement of concrete as shown on the drawings in Appendix 3.

## 1.04 SCHEDULE AND OPINION OF COST

Construction is scheduled for summer of 2025, with the bid opening anticipated for January 2025. The preliminary opinion of construction cost for the street improvement portion of the project that will be included in the Special Improvement District is shown in Appendix 2, while specific parcel assessments for the SID are shown in Appendix 3.

## 1.05 SID MAPS AND ESTIMATED SPECIAL ASSESSMENTS

The proposed SID boundary is shown in Appendix C. The detailed SID information is also shown in Appendix 3 and includes an overall layout showing the related subdivisions and adjacent streets. Detailed plan view preliminary drawings showing proposed improvements on each parcel based on field observations are included in Appendix 3. Preliminary SID assessment tables showing improvements and estimated costs for each parcel are also included in Appendix 3.



APPENDIX A  
CITY OF DICKINSON SPECIAL ASSESSMENT POLICY

---

**RESOLUTION NO. 39 - 2019**

**A RESOLUTION DECLARING A SPECIAL ASSESSMENT POLICY FOR COSTS FOR SIDEWALKS, CURB AND GUTTER IMPROVEMENTS**

WHEREAS, the City of Dickinson intends to perform routine maintenance projects on asphalt and concrete streets, and

WHEREAS, the City of Dickinson has a limited amount of funding available to perform maintenance projects, and

WHEREAS the City of Dickinson has the legal authority to assess costs for sidewalks and curb and gutter improvements to properties within the City Of Dickinson pursuant to N.D.C.C. Section 40-31-06 and Municipal Code Section 33.04.180.

NOW, THEREFORE, it is hereby resolved by the Board of City Commissioners, as follows:

1. There is hereby created a special assessment policy for street maintenance projects.
2. Sidewalk and curb and gutter improvements made in conjunction with the street maintenance projects will be assessed to the adjacent landowners except in the following conditions:
  - a. On corner lots, through the entirety of the radius around the corner.
  - b. Where otherwise satisfactory curb and gutter or sidewalk need to be replaced because of work being done on the street project, including lighting and signing.
  - c. Where curb and gutter or sidewalk about the back lot line of a property
  - d. Where at the discretion of the City Engineer, sidewalk installation is not feasible.
3. Of the eligible costs in Section 2, one hundred percent (100%) will be assessed to the benefitting properties.
4. The costs of assessments shall be paid by the benefitting properties over a ten (10) year term at a rate of 1.5% over the then current market interest rate at the time of construction.

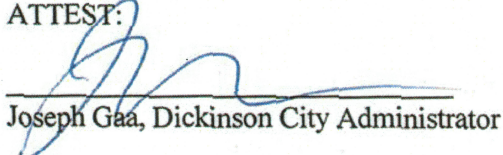
NOW, THEREFORE, BE IT RESOLVED that the Board of City Commissioners of the City of Dickinson, North Dakota creates a special assessment policy for street maintenance projects.

Dated this 17th day of December 2019.



Scott Decker, President  
Board of City Commissioners

ATTEST:



Joseph Gaa, Dickinson City Administrator

## APPENDIX B

### TOTAL PROJECT OPINION OF PROBABLE CONSTRUCTION COST

---



## OPINION OF PROBABLE COSTS

Project: 2025 Watermain and Lead Service Replacement Project  
Special Improvement District No. 202503-01

Basis for Estimate

Sheet 1 of 1

Location: Dickinson, North Dakota

☐ No Design Completed

Date Prep: September 10, 2024

☒ Preliminary Design

Project No. CIP 202503

☐ Final Design

Item No.	Description	Unit Measurement	No. Units	SURFACE IMPROVEMENTS		WATERMAIN IMPROVEMENTS	
				Per Unit	Total	Per Unit	Total
1	General Conditions(Contract Bond)	LS	1.00	\$ 120,000.00	\$ 120,000.00	\$ -	\$ -
2	Mobilization	LS	1.00	\$ 150,000.00	\$ 150,000.00	\$ -	\$ -
3	Traffic Control	LS	1.00	\$ 40,000.00	\$ 40,000.00	\$ -	\$ -
4	Traffic Flagging	MHR	200.00	\$ 60.00	\$ 12,000.00	\$ -	\$ -
5	Erosion Control	LS	1.00	\$ 5,000.00	\$ 5,000.00	\$ -	\$ -
6	*Remove Concrete Curb and Gutter	LF	3,100	\$ 9.00	\$ 27,900.00	\$ -	\$ -
7	*Remove Concrete	SY	2,700	\$ 16.00	\$ 43,200.00	\$ -	\$ -
8	Remove Bituminous Pavement	SY	4,600	\$ 20.00	\$ 92,000.00	\$ -	\$ -
9	Milling Pavement Surface	SY	16,993	\$ 4.50	\$ 76,466.50	\$ -	\$ -
10	*Concrete Curb and Gutter	LF	3,100	\$ 100.00	\$ 310,000.00	\$ -	\$ -
11	*Concrete Sidewalk	SY	1,900	\$ 196.00	\$ 372,400.00	\$ -	\$ -
12	*Concrete Driveway	SY	880	\$ 259.00	\$ 227,920.00	\$ -	\$ -
13	Concrete Valley Gutter	SY	80	\$ 325.00	\$ 26,000.00	\$ -	\$ -
14	Detectable Warning Panel	SF	100	\$ 50.00	\$ 5,000.00	\$ -	\$ -
15	Aggregate Base Course CL5	TON	1,430	\$ 95.00	\$ 135,850.00	\$ -	\$ -
16	Hot Bituminous Pavement - Milled Area (1.5")	TON	1,416	\$ 250.00	\$ 354,000.00	\$ -	\$ -
17	Asphalt Pavement Patching (3.5")	TON	890	\$ 360.00	\$ 320,400.00	\$ -	\$ -
18	Manhole Casting to Grade	EA	17	\$ 2,400.00	\$ 40,800.00	\$ -	\$ -
19	Gate Valve Box to Grade	EA	31	\$ 1,500.00	\$ 46,500.00	\$ -	\$ -
20	Removal of All Pipes Types & Sizes	LF	3,280	\$ -	\$ -	\$ 6.50	\$ 21,320.00
21	Abandon/Remove Hydrant/Gate Valve Box	EA	7	\$ -	\$ -	\$ 1,050.00	\$ 7,350.00
22	Watermain 6"	LF	565	\$ -	\$ -	\$ 140.00	\$ 79,100.00
23	Watermain 8"	LF	2,655	\$ -	\$ -	\$ 160.00	\$ 424,800.00
24	Watermain 16"	LF	60	\$ -	\$ -	\$ 320.00	\$ 19,200.00
25	Water Service Lines	LF	1,555	\$ -	\$ -	\$ 100.00	\$ 155,500.00
26	Lead Service Line Replacement	EA	30	\$ -	\$ -	\$ 10,000.00	\$ 300,000.00
27	Water Service Valves	EA	65	\$ -	\$ -	\$ 1,100.00	\$ 71,500.00
28	Valves	EA	25	\$ -	\$ -	\$ 7,000.00	\$ 175,000.00
29	Hydrants	EA	8	\$ -	\$ -	\$ 10,500.00	\$ 84,000.00
30	Fittings	LS	1	\$ -	\$ -	\$ 37,000.00	\$ 37,000.00
31	Connections/Sleeve	LS	1	\$ -	\$ -	\$ 56,000.00	\$ 56,000.00
32	Temporary Water	LS	1	\$ -	\$ -	\$ 180,000.00	\$ 180,000.00
33	Sanitary Sewer Service Crossing	EA	31	\$ -	\$ -	\$ 1,600.00	\$ 49,600.00
34	Storm Sewer Crossing	EA	3	\$ -	\$ -	\$ 5,000.00	\$ 15,000.00
				Subtotal	\$ 2,405,436.50		\$ 1,675,370.00
				Contingencies (15%)	\$ 360,800.00		\$ 251,300.00
				Total	\$ 2,766,200.00		\$ 1,926,670.00
				Construction Total			\$4,692,870.00

\* Special Improvement District eligible item

APPENDIX C  
SID NO. 202503-01: DISTRICT MAP,  
PLAN DRAWINGS AND ASSESSMENT TABLE

---

Legend

- Division\_Boundary
- Dickinson\_Tax\_parcel

SUBDIVISION NAME

- AUDITOR'S PLAT NO. 4
- AUDITOR'S PLAT NO. 4 (REPLAT L4 B3)
- COLLEGE
- FRYE'S
- GOLF COURSE NO. 1
- UNPLATTED 4
- YOUNG'S FIFTH
- YOUNG'S SEVENTH
- YOUNG'S SIXTH

9, 10, 11 INCL.	8	7	6	5	4	3	2	1	5 LESS 185.4' 4	185.4' 5	3	1 & 2
-----------------	---	---	---	---	---	---	---	---	-----------------	----------	---	-------

9

8

7

6

5

4

3

2

1

N1/2 5 & 6

S1/2 5 & 6

4

3

1 & 2

10

11

12

13

14

15

16

17

18

7

8

9

10

11

12

9

8

7

6

4 & 5

N70' 1, 2 & 3

S70' 1, 2 & 3

10, 11, 12 & W1/2 13

E1/2 LOT 13

E1/2 15, ALL 16

17 & 18

7 & 8

9 & 10

11 & 12

1

2

3

4 & 5

6 & 7

8

W15' 12, ALL 3

12 LESS W15' 11

W75' 10 W50' 9, E15' 10

E10' 4, W40' 3

W40' 4

E50' 5

1 & 2

3

4

5

6

7

8

9

10

11

12

1

2

3

4

5, 6 & 7

8

1

2

3

4

5

6

7

8

9

10

11

12

1, 2, 3 & 4

5

6

7

8

9

10

11

12

13

14

15

16

17

18

19

20

21

22

23

24

25

26

27

28

29

30

31

32

33

34

35

36

37

38

39

40

41

42

43

44

45

46

47

48

49

50

51

52

53

54

55

56

57

58

59

60

61

62

63

64

65

66

67

68

69

70

71

72

73

74

75

76

77

78

79

80

81

82

83

84

85

86

87

88

89

90

91

92

93

94

95

96

97

98

99

100

101

102

103

104

105

106

107

108

109

110

111

112

113

114

115

116

117

118

119

120

121

122

123

124

125

126

127

128

129

130

131

132

133

134

135

136

137

138

139

140

141

142

143

144

145

146

147

148

149

150

151

152

153

154

155

156

157

158

159

160

161

162

163

164

165

166

167

168

169

170

171

172

173

174

175

176

177

178

179

180

181

182

183

184

185

186

187

188

189

190

191

192

193

194

195

196

197

198

199

200

201

202

203

204

205

206

207

208

209

210

211

212

213

214

215

216

217

218

219

220

221

222

223

224

225

226

227

228

229

230

231

232

233

234

235

236

237

238

239

240

241

242

243

244

245

246

247

248

249

250

251

252

253

254

255

256

257

258

259

260

261

262

263

264

265

266

267

268

269

270

271

272

273

274

275

276

277

278

279

280

281

282

283

284

285

286

287

288

289

290

291

292

293

294

295

296

297

298

299

300

301

302

303

304

305

306

307

308

309

310

311

312

313

314

315

316

317

318

319

320

321

322

323

324

325

326

327

328

329

330

331

332

333

334

335

336

337

338

339

340

341

342

343

344

345

346

347

348

349

350

351

352

353

354

355

356

357

358

359

360

361

362

363

364

365

366

367

368

369

370

371

372

373

374

375

376

377

378

379

380

381

382

383

384

385

386

387

388

389

390

391

392

393

394

395

396

397

398

399

400

401

402

403

404

405

406

407

408

409

410

411

412

413

414

415

416

417

418

419

420

421

422

423

424

425

426

427

428

429

430

431

432

433

434

435

436

437

438

439

440

441

442

443

444

445

446

447

448

449

450

451

452

453

454

455

456

457

458

459

460

461

462

463

464

465

466

467

468

469

470

471

472

473

474

475

476

477

478

479

480

481

482

483

484

485

486

487

488

489

490

491

492

493

494

495

496

497

498

499

500

501

502

503

504

505

506

507

508

509

510

511

512

513

514

515

516

517

518

519

520

521

522

523

524

525

526

527

528

529

530

531

532

533

534

535

536

537

538

539

540

541

542

543

544

545

546

547

548

549

550

551

552

553

554

555

556

557

558

559

560

561

562

563

564

565

566

567

568

569

570

571

572

573

574

575

576

577

578

579

580

581

582

583

584

585

586

587

588

589

590

591

592

593

594

595

596

597

598

599

600

601

602

603

604

605

606

607

608

609

610

611

612

613

614

615

616

617

618

619

620

621

622

623

624

625

626

627

628

629

630

631

632

633

634

635

636

637

638

639

640

641

642

643

644

645

646

647

648

649

650

651

652

653

654

655

656

657

658

659

660

661

662

663

664

665

666

667

668

669

670

671

672

673

674

675

676

677

678

679

680

681

682

683

684

685

686

687

688

689

690

691

692

693

694

695

696

697

698

699

700

701

702

703

704

705

706

707

708

709

710

711

712

713

714

715

716

717

718

719

720

721

722

723

724

725

726

727

728

729

730

731

732

733

734

735

736

737

738

739

740

741

742

743

744

745

746

747

748

749

750

751

752

753

754

755

756

757

758

759

760

761

762

763

764

765

766

767

768

769

770

771

772

773

774

775

776

777

778

779

780

781

782

783

784

785

786

787

788

789

790

791

792

793

794

795

796

797

798

799

800

801

802

803

804

805

806

807

808

809

810

811

812

813

814

815

816

817

818

819

820

821

822

823

824

825

826

827

828

829

830

831

832

833

834

835

836

837

838

839

840

841

842

843

844

845

846

847

848

849

850

851

852

853

854

855

856

857

858

859

860

861

862

863

864

865

866

867

868

869

870

871

872

873

874

875

876

877

878

879

880

881

882

883

884

885

886

887

888

889

890

891

892

893

894

895

896

897

898

899

900

901

902

903

904

905

906

907

908

909

910

911

912

913

914

915

916

917

918

919

920

921

922

923

924

925

926

927

928

929

930

931

932

933

934

935

936

937

938

939

940

941

942

943

944

945

946

947

948

949

950

951

952

953

954

955

956

957

958

959

960

961

962

963

964

965

966

967

968

969

970

971

972

973

974

975

976

977

978

979

980

981

982

983

984

985

986

987

988

989

990

991

992

993

994

995

996

997

998

999

13TH AVE W

10

W1/2 4

E1/2 4, LESS.....

N56' 1

S50' 1

2

N50' 3

9

8

7

6

W69' 3

S106' 3

S78' 3

S106' 3

W213' 2

E100' 2

PORTION 1

S112' W85'

N51' 6

N56' 1

S54' N105' 6

S55' N160' 6

N50' S102' 6

S52'

5

4

3

N51' 6

S50' 1

2 & 3

4

75' X 141' 1

2 LESS S7'

11TH AVE W

10TH AVE W

9TH AVE W

8TH AVE W

7TH AVE W

6TH ST W

5TH ST W

4TH ST W

3RD ST W

2ND ST W

1ST ST W

VILLARD ST W

SOUTH 11TH AVE W

SOUTH 10TH AVE W

SOUTH 9TH AVE W

SOUTH 8TH AVE W

SOUTH 7TH AVE W

SOUTH 6TH AVE W

SOUTH 5TH AVE W

SOUTH 4TH AVE W

SOUTH 3TH AVE W

SOUTH 2TH AVE W

SOUTH 1TH AVE W

SOUTH 12TH AVE W

SOUTH 11TH AVE W

SOUTH 10TH AVE W

SOUTH 9TH AVE W

SOUTH 8TH AVE W

SOUTH 7TH AVE W

SOUTH 6TH AVE W

SOUTH 5TH AVE W

SOUTH 4TH AVE W

SOUTH 3TH AVE W

SOUTH 2TH AVE W

SOUTH 1TH AVE W

SOUTH 12TH AVE W

SOUTH 11TH AVE W

SOUTH 10TH AVE W

SOUTH 9TH AVE W

SOUTH 8TH AVE W

SOUTH 7TH AVE W

SOUTH 6TH AVE W

SOUTH 5TH AVE W

SOUTH 4TH AVE W

SOUTH 3TH AVE W

SOUTH 2TH AVE W

SOUTH 1TH AVE W

SOUTH 12TH AVE W

SOUTH 11TH AVE W

SOUTH 10TH AVE W

SOUTH 9TH AVE W

SOUTH 8TH AVE W

SOUTH 7TH AVE W

SOUTH 6TH AVE W

SOUTH 5TH AVE W

SOUTH 4TH AVE W

SOUTH 3TH AVE W

SOUTH 2TH AVE W

SOUTH 1TH AVE W

SOUTH 12TH AVE W

SOUTH 11TH AVE W

SOUTH 10TH AVE W

SOUTH 9TH AVE W

SOUTH 8TH AVE W

SOUTH 7TH AVE W

SOUTH 6TH AVE W

SOUTH 5TH AVE W

SOUTH 4TH AVE W

SOUTH 3TH AVE W

SOUTH 2TH AVE W

SOUTH 1TH AVE W

SOUTH 12TH AVE W

SOUTH 11TH AVE W

SOUTH 10TH AVE W

SOUTH 9TH AVE W

SOUTH 8TH AVE W

SOUTH 7TH AVE W

SOUTH 6TH AVE W

SOUTH 5TH AVE W

SOUTH 4TH AVE W

SOUTH 3TH AVE W

SOUTH 2TH AVE W

SOUTH 1TH AVE W

SOUTH 12TH AVE W

SOUTH 11TH AVE W

SOUTH 10TH AVE W

SOUTH 9TH AVE W

SOUTH 8TH AVE W

SOUTH 7TH AVE W

SOUTH 6TH AVE W

SOUTH 5TH AVE W

SOUTH 4TH AVE W

SOUTH 3TH AVE W

SOUTH 2TH AVE W

SOUTH 1TH AVE W

SOUTH 12TH AVE W

SOUTH 11TH AVE W

SOUTH 10TH AVE W

SOUTH 9TH AVE W

SOUTH 8TH AVE W

SOUTH 7TH AVE W

SOUTH 6TH AVE W

SOUTH 5TH AVE W

SOUTH 4TH AVE W

SOUTH 3TH AVE W

SOUTH 2TH AVE W

SOUTH 1TH AVE W

SOUTH 12TH AVE W

SOUTH 11TH AVE W

SOUTH 10TH AVE W

SOUTH 9TH AVE W

SOUTH 8TH AVE W

SOUTH 7TH AVE W

SOUTH 6TH AVE W

SOUTH 5TH AVE W

SOUTH 4TH AVE W

SOUTH 3TH AVE W

SOUTH 2TH AVE W

SOUTH 1TH AVE W

SOUTH 12TH AVE W

SOUTH 11TH AVE W

SOUTH 10TH AVE W

SOUTH 9TH AVE W

SOUTH 8TH AVE W

SOUTH 7TH AVE W

SOUTH 6TH AVE W

SOUTH 5TH AVE W

SOUTH 4TH AVE W

SOUTH 3TH AVE W

SOUTH 2TH AVE W

SOUTH 1TH AVE W

SOUTH 12TH AVE W

SOUTH 11TH AVE W

SOUTH 10TH AVE W

SOUTH 9TH AVE W

SOUTH 8TH AVE W

SOUTH 7TH AVE W

SOUTH 6TH AVE W

SOUTH 5TH AVE W

SOUTH 4TH AVE W

SOUTH 3TH AVE W

SOUTH 2TH AVE W

SOUTH 1TH AVE W

SOUTH 12TH AVE W

SOUTH 11TH AVE W

SOUTH 10TH AVE W

SOUTH 9TH AVE W

SOUTH 8TH AVE W

SOUTH 7TH AVE W

SOUTH 6TH AVE W

SOUTH 5TH AVE W

SOUTH 4TH AVE W

SOUTH 3TH AVE W

SOUTH 2TH AVE W

SOUTH 1TH AVE W

SOUTH 12TH AVE W

SOUTH 11TH AVE W

SOUTH 10TH AVE W

SOUTH 9TH AVE W

SOUTH 8TH AVE W

SOUTH 7TH AVE W

SOUTH 6TH AVE W

SOUTH 5TH AVE W

SOUTH 4TH AVE W

SOUTH 3TH AVE W

SOUTH 2TH AVE W

SOUTH 1TH AVE W

SOUTH 12TH AVE W

SOUTH 11TH AVE W

SOUTH 10TH AVE W

SOUTH 9TH AVE W

SOUTH 8TH AVE W

SOUTH 7TH AVE W

SOUTH 6TH AVE W

SOUTH 5TH AVE W

SOUTH 4TH AVE W

SOUTH 3TH AVE W

SOUTH 2TH AVE W

SOUTH 1TH AVE W

SOUTH 12TH AVE W

SOUTH 11TH AVE W

SOUTH 10TH AVE W

SOUTH 9TH AVE W

SOUTH 8TH AVE W

SOUTH 7TH AVE W

SOUTH 6TH AVE W

SOUTH 5TH AVE W

SOUTH 4TH AVE W

SOUTH 3TH AVE W

SOUTH 2TH AVE W

SOUTH 1TH AVE W

SOUTH 12TH AVE W

SOUTH 11TH AVE W

SOUTH 10TH AVE W

SOUTH 9TH AVE W

SOUTH 8TH AVE W

SOUTH 7TH AVE W

SOUTH 6TH AVE W

SOUTH 5TH AVE W

SOUTH 4TH AVE W

SOUTH 3TH AVE W

SOUTH 2TH AVE W

SOUTH 1TH AVE W

SOUTH 12TH AVE W

SOUTH 11TH AVE W

SOUTH 10TH AVE W

SOUTH 9TH AVE W

SOUTH 8TH AVE W

SOUTH 7TH AVE W

SOUTH 6TH AVE W

SOUTH 5TH AVE W

SOUTH 4TH AVE W

SOUTH 3TH AVE W

SOUTH 2TH AVE W

SOUTH 1TH AVE W

SOUTH 12TH AVE W

SOUTH 11TH AVE W

SOUTH 10TH AVE W

SOUTH 9TH AVE W

SOUTH 8TH AVE W

SOUTH 7TH AVE W

SOUTH 6TH AVE W

SOUTH 5TH AVE W

SOUTH 4TH AVE W

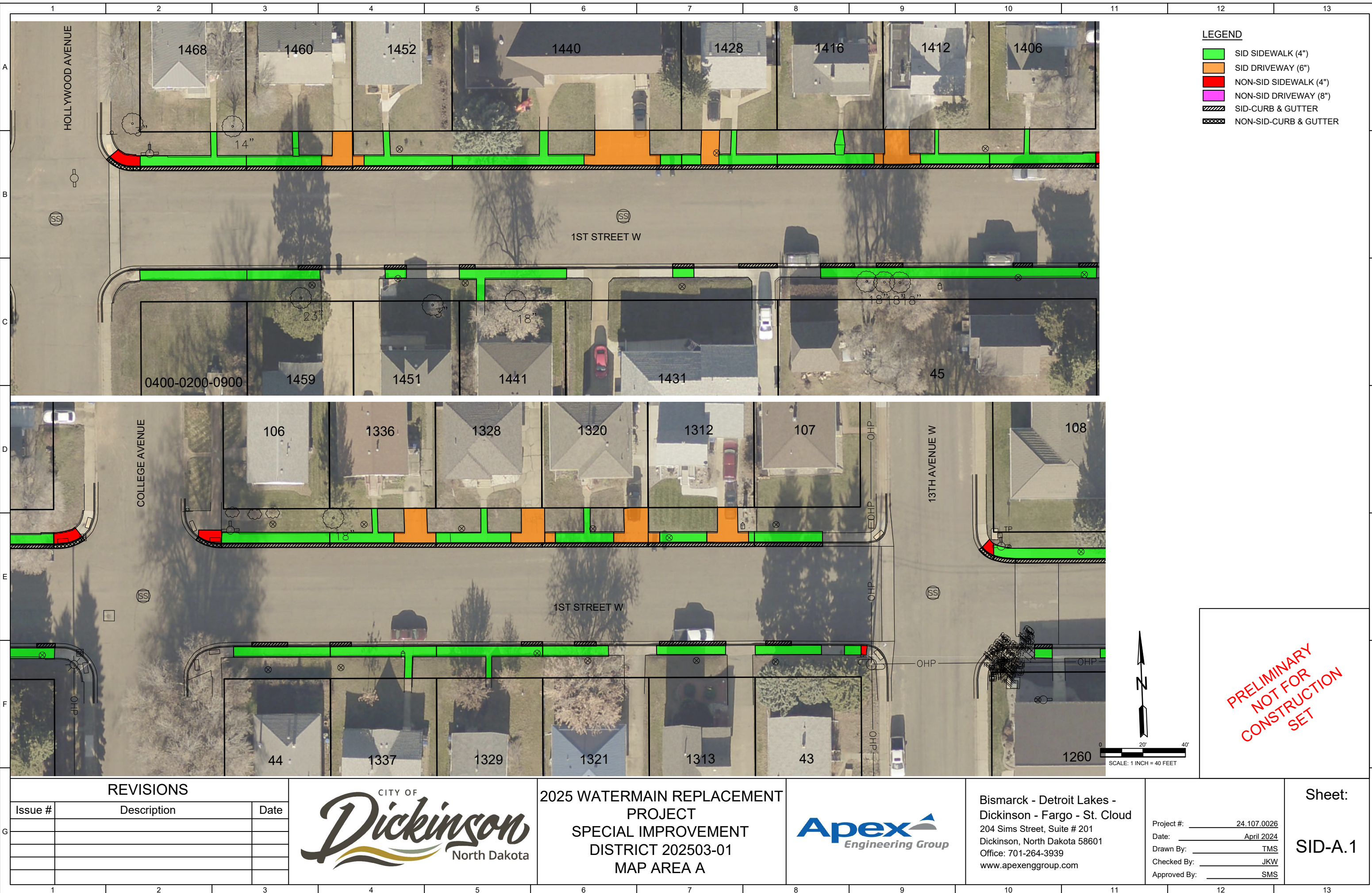
SOUTH 3TH AVE W

SOUTH 2TH AVE W

SOUTH 1TH AVE W

SOUTH 12TH AVE W</





REVISIONS		
Issue #	Description	Date

CITY OF

*Dickinson*

North Dakota

2025 WATERMAIN REPLACEMENT PROJECT

SPECIAL IMPROVEMENT DISTRICT 202503-01

MAP AREA A

**Apex**

Engineering Group

Bismarck - Detroit Lakes - Dickinson - Fargo - St. Cloud

204 Sims Street, Suite # 201

Dickinson, North Dakota 58601

Office: 701-264-3939

www.apexenggroup.com

Project #: 24.107.0026

Date: April 2024

Drawn By: TMS

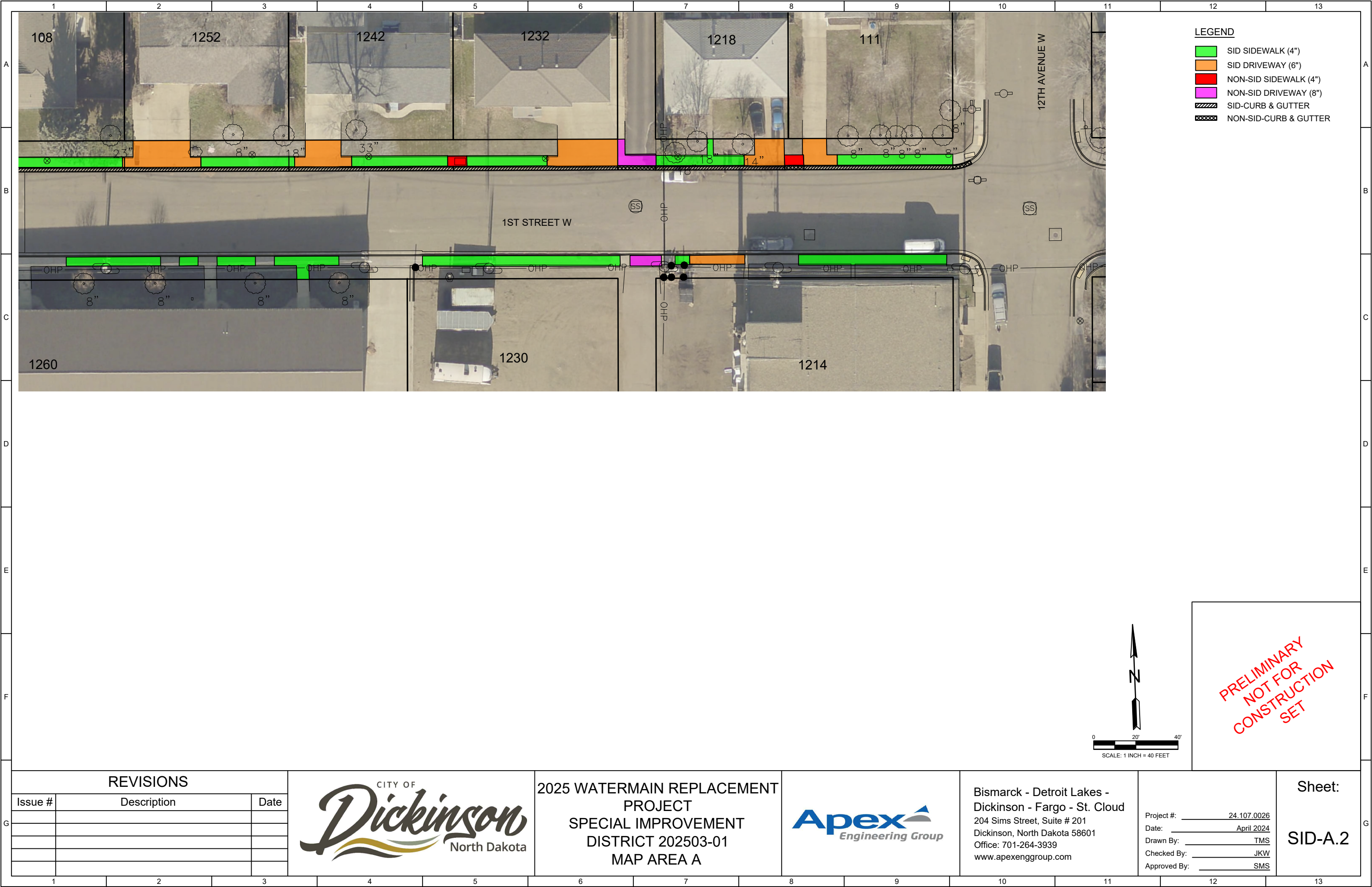
Checked By: JKW

Approved By: SMS

Sheet:

SID-A.1





REVISIONS		
Issue #	Description	Date

CITY OF

*Dickinson*

North Dakota

2025 WATERMAIN REPLACEMENT PROJECT

SPECIAL IMPROVEMENT DISTRICT 202503-01

MAP AREA A

**Apex**

Engineering Group

Bismarck - Detroit Lakes - Dickinson - Fargo - St. Cloud

204 Sims Street, Suite # 201

Dickinson, North Dakota 58601

Office: 701-264-3939

www.apexenggroup.com

Project #: 24.107.0026

Date: April 2024

Drawn By: TMS

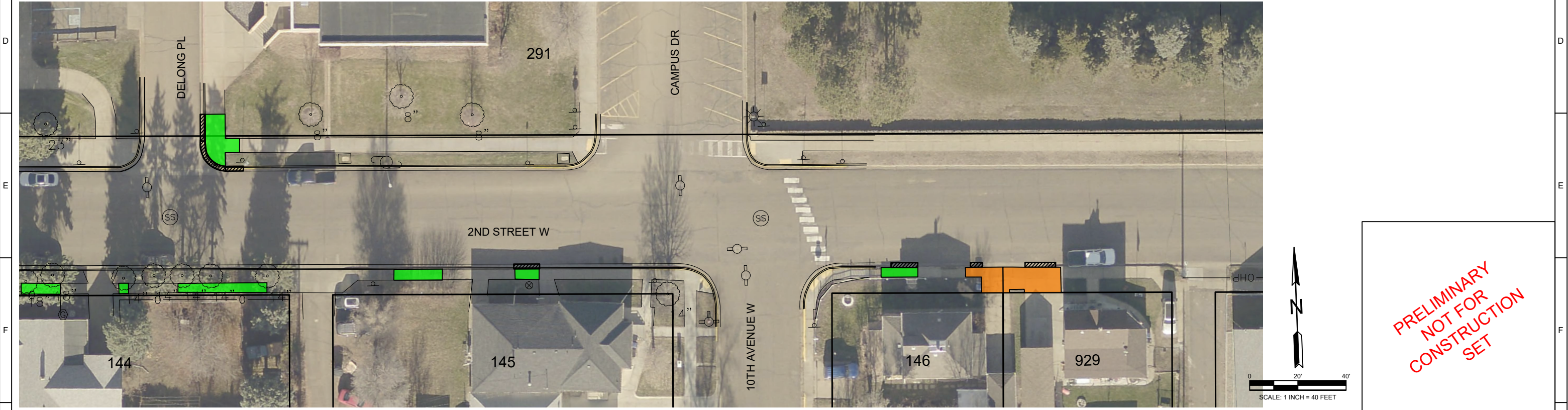
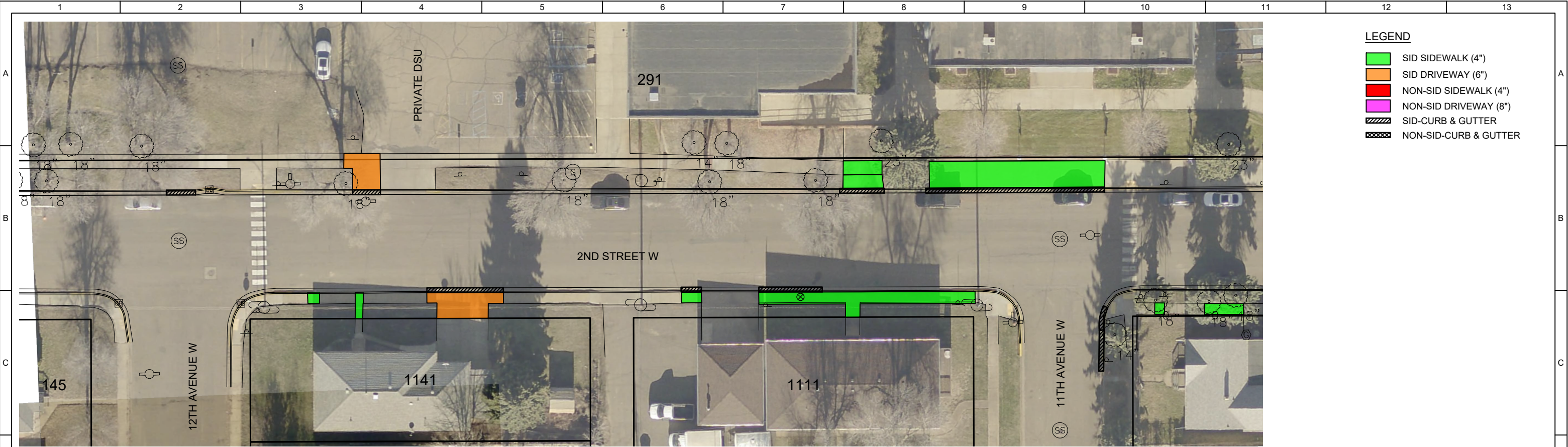
Checked By: JKW

Approved By: SMS

Sheet:

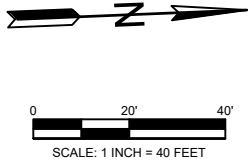
SID-A.2





REVISIONS			<div><div>CITY OF</div><div>Dickinson</div><div>North Dakota</div></div>	2025 WATERMAIN REPLACEMENT PROJECT SPECIAL IMPROVEMENT DISTRICT 202503-01 MAP AREA B	<div><div>Apex</div><div>Engineering Group</div></div>	Bismarck - Detroit Lakes - Dickinson - Fargo - St. Cloud 204 Sims Street, Suite # 201 Dickinson, North Dakota 58601 Office: 701-264-3939 www.apexenggroup.com	Project #: 24.107.0026 Date: April 2024 Drawn By: TMS Checked By: JKW Approved By: SMS	Sheet:  SID-B
Issue #	Description	Date						

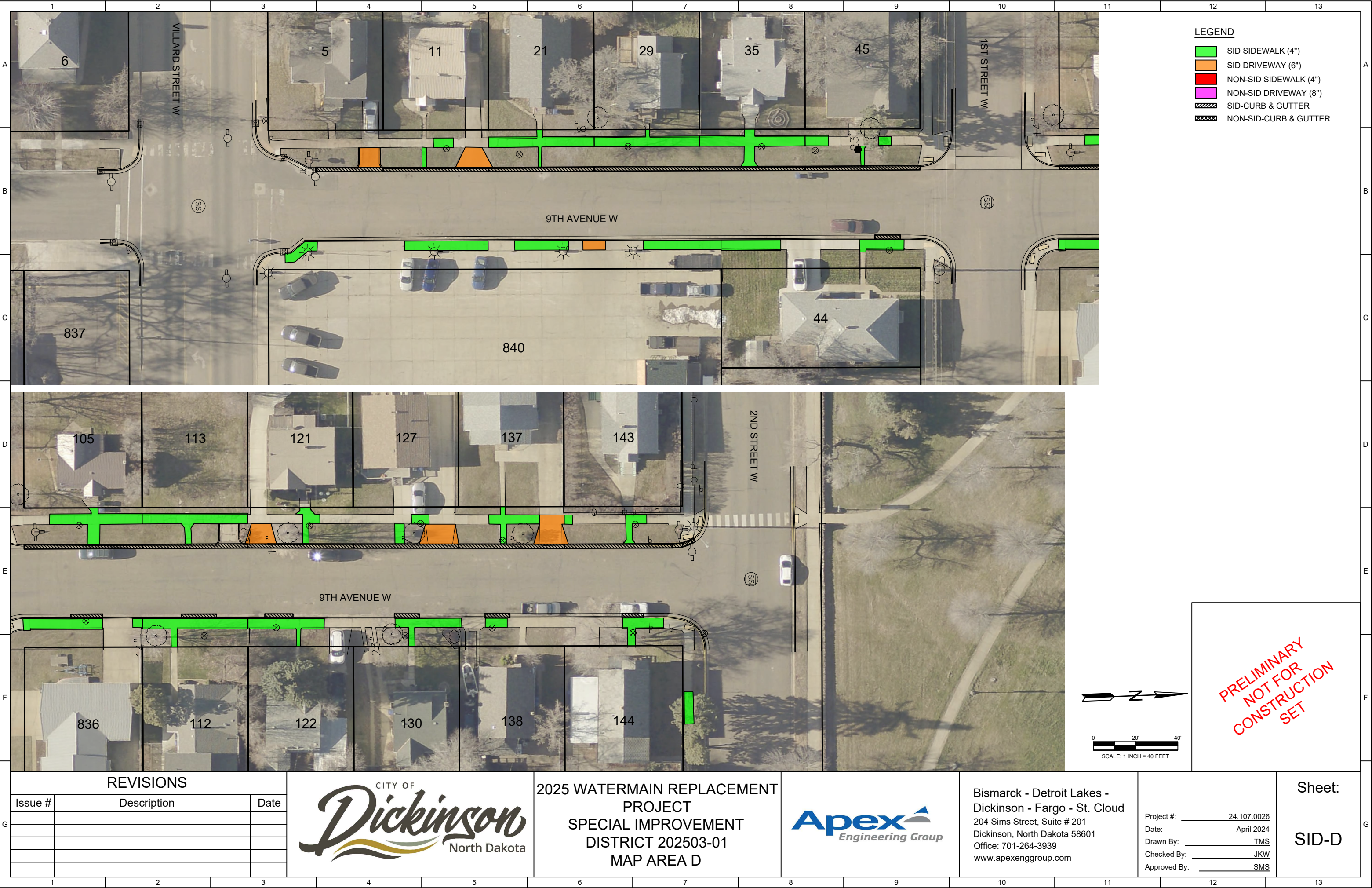




PRELIMINARY  
NOT FOR  
CONSTRUCTION  
SET

REVISIONS			<div><div>CITY OF</div><div><i>Dickinson</i></div><div>North Dakota</div></div>	2025 WATERMAIN REPLACEMENT PROJECT SPECIAL IMPROVEMENT DISTRICT 202503-01 MAP AREA C	<div><div>Apex</div><div>Engineering Group</div></div>	Bismarck - Detroit Lakes - Dickinson - Fargo - St. Cloud 204 Sims Street, Suite # 201 Dickinson, North Dakota 58601 Office: 701-264-3939 www.apexenggroup.com	Project #: 24.107.0026 Date: April 2024 Drawn By: TMS Checked By: JKW Approved By: SMS	Sheet:  SID-C
Issue #	Description	Date						

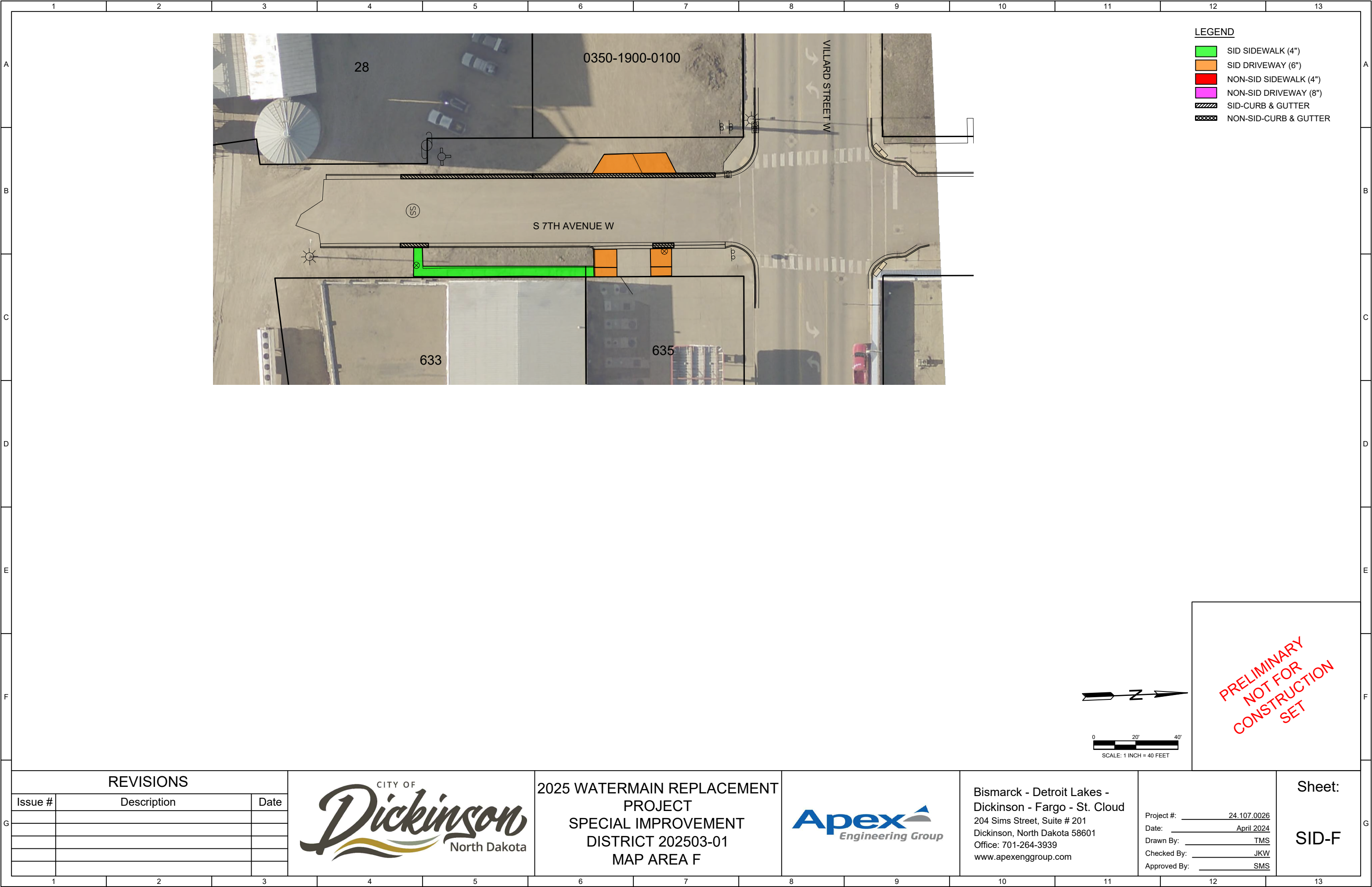












- LEGEND
- SID SIDEWALK (4")
  - SID DRIVEWAY (6")
  - NON-SID SIDEWALK (4")
  - NON-SID DRIVEWAY (8")
  - SID-CURB & GUTTER
  - NON-SID-CURB & GUTTER

PRELIMINARY  
NOT FOR  
CONSTRUCTION  
SET

REVISIONS		
Issue #	Description	Date



2025 WATERMAIN REPLACEMENT  
PROJECT  
SPECIAL IMPROVEMENT  
DISTRICT 202503-01  
MAP AREA F



Bismarck - Detroit Lakes -  
Dickinson - Fargo - St. Cloud  
204 Sims Street, Suite # 201  
Dickinson, North Dakota 58601  
Office: 701-264-3939  
www.apexenggroup.com

Project #: 24.107.0026  
Date: April 2024  
Drawn By: TMS  
Checked By: JKW  
Approved By: SMS

Sheet:  
  
SID-F

City of Dickinson - 2025 Watermain and Lead Service Line Replacement Project											
SID No. 202503-01											
Parcel ID	House #	Street	LOT	BLOCK	Legal Description	Removal of Concrete (SY)	Removal of Curb & Gutter (LF)	Curb & Gutter (LF)	Concrete Sidewalk 4" (SY)	Concrete Driveway 6" (SY)	Total Assessment
0400-0200-0900	-	-	9	2	LOT 9, BLOCK 2, COLLEGE ADDITION	27.9	-	-	27.9	-	\$ 5,914.80
0350-2800-0100	145	10TH AVENUE W	1	28	LOT 1, BLOCK 28, YOUNG'S 5TH ADDITION	15.0	11.0	11.0	15.0	-	\$ 4,379.00
0350-2300-1202	146	10TH AVENUE W	W71' 12	23	W71' LOT 12, BLOCK 23, YOUNG'S 5TH ADDITION	20.2	16.5	16.5	6.7	13.5	\$ 6,931.40
0570-0100-0000	-	10TH AVENUE W	-	1	BLOCK 1, GOLF COURSE SUBDIVISION #1	167.1	302.0	302.0	167.1	-	\$ 68,343.20
0350-2800-1200	144	11TH AVENUE W	12	28	LOT 12, BLOCK 28, YOUNG'S 5TH ADDITION	28.1	27.5	27.5	28.1	-	\$ 8,954.70
0610-0300-0301	111	12TH AVENUE W	E78' S106' 3	3	E78' S106' LOT 3, BLOCK 3, AUDITOR'S PLAT #4	49.0	71.0	71.0	30.4	18.6	\$ 19,298.80
0400-0100-0100	43	13TH AVENUE W	1	1	LOT 1, BLOCK 1, COLLEGE ADDITION	18.9	12.5	12.5	18.9	-	\$ 5,369.30
0400-0400-1200	107	13TH AVENUE W	12	4	LOT 12, BLOCK 4, COLLEGE ADDITION	17.8	32.5	32.5	17.8	-	\$ 7,316.10
0610-0300-0900	108	13TH AVENUE W	9	3	LOT 9, BLOCK 3, AUDITOR'S PLAT #4, SUBDIVISION LOT 4, BLOCK 3	43.0	78.5	78.5	42.5	0.5	\$ 17,704.00
0350-2100-1101	827	1ST STREET W	E47' N40' 11.....	21	E47' N40' LOT 11, E47' LOT 12, BLOCK 21, YOUNG'S 5TH ADDITION	-	-	-	-	-	\$ -
0350-2100-1103	835	1ST STREET W	M47' X 40' 11.....	21	M47' X 40' LOT 11, M47' X 54.5' LOT 12, BLOCK 21, YOUNG'S 5TH ADDITION	-	-	-	-	-	\$ -
0350-2200-0700	836	1ST STREET W	7	22	LOT 7, BLOCK 22, YOUNG'S 5TH ADDITION	23.0	15.5	15.5	23.0	-	\$ 6,565.50
0350-2400-0102	923	1ST STREET W	W65' 1	24	W65' LOT 1, BLOCK 24, YOUNG'S 5TH ADDITION	-	-	-	-	-	\$ -
0610-0300-0302	1218	1ST STREET W	W63' S106' 3	3	W63' S106' LOT 3, BLOCK 3, AUDITOR'S PLAT #4	48.8	61.5	61.5	25.8	23.0	\$ 18,498.10
0610-0300-0600	1232	1ST STREET W	6	3	LOT 6, BLOCK 3, AUDITOR'S PLAT #4, SUBDIVISION LOT 4, BLOCK 3	64.6	78.0	78.0	21.2	43.4	\$ 24,931.40
0610-0300-0700	1242	1ST STREET W	7	3	LOT 7, BLOCK 3, AUDITOR'S PLAT #4, SUBDIVISION LOT 4, BLOCK 3	56.3	78.0	78.0	26.8	29.5	\$ 22,296.10
0610-0300-0800	1252	1ST STREET W	8	3	LOT 8, BLOCK 3, AUDITOR'S PLAT #4, SUBDIVISION LOT 4, BLOCK 3	66.7	78.0	78.0	23.2	43.5	\$ 25,382.90
0400-0400-1100	1312	1ST STREET W	11	4	LOT 11, BLOCK 4, COLLEGE ADDITION	39.9	50.5	50.5	13.8	26.1	\$ 15,607.60
0400-0100-0200	1313	1ST STREET W	2	1	LOT 2, BLOCK 1, COLLEGE ADDITION	15.1	31.5	31.5	15.1	-	\$ 6,634.70
0400-0400-1000	1320	1ST STREET W	10	4	LOT 10, BLOCK 4, COLLEGE ADDITION	45.4	50.0	50.0	19.1	26.3	\$ 16,731.70
0400-0100-0300	1321	1ST STREET W	3	1	LOT 3, BLOCK 1, COLLEGE ADDITION	17.3	10.5	10.5	17.3	-	\$ 4,812.10
0400-0400-0900	1328	1ST STREET W	9	4	LOT 9, BLOCK 4, COLLEGE ADDITION	46.1	50.0	50.0	23.3	22.8	\$ 16,659.60
0400-0100-0400	1329	1ST STREET W	4	1	LOT 4, BLOCK 1, COLLEGE ADDITION	30.8	10.0	10.0	30.8	-	\$ 7,619.60
0400-0400-0800	1336	1ST STREET W	8	4	LOT 8, BLOCK 4, COLLEGE ADDITION	44.6	50.0	50.0	20.1	24.5	\$ 16,448.70
0400-0100-0500	1337	1ST STREET W	5	1	LOT 5, BLOCK 1, COLLEGE ADDITION	31.3	10.5	10.5	31.3	-	\$ 7,780.10
0400-0500-1800	1406	1ST STREET W	18	5	LOT 18, BLOCK 5, COLLEGE ADDITION	31.1	50.0	50.0	31.1	-	\$ 12,043.20
0400-0500-1700	1412	1ST STREET W	17	5	LOT 17, BLOCK 5, COLLEGE ADDITION	44.8	50.5	50.5	20.3	24.5	\$ 16,545.60
0400-0500-1600	1416	1ST STREET W	16	5	LOT 16, BLOCK 5, COLLEGE ADDITION	32.7	50.0	50.0	30.3	2.4	\$ 12,533.60
0400-0500-1500	1428	1ST STREET W	15 LESS W5'	5	LOT 15 LESS W5', BLOCK 5, COLLEGE ADDITION	39.0	45.5	45.5	23.5	15.5	\$ 14,204.00
0400-0200-0500	1431	1ST STREET W	4 & 5	2	LOTS 4 & 5, BLOCK 2, COLLEGE ADDITION	4.9	28.5	28.5	4.9	-	\$ 4,145.30
0400-0500-1300	1440	1ST STREET W	E3' 12, 13, 14, W5' 15	5	E3' LOT 12, ALL LOTS 13 & 14, W5' LOT 15, BLOCK 5, COLLEGE ADDITION	97.8	108.0	108.0	45.0	52.8	\$ 35,832.00
0400-0200-0600	1441	1ST STREET W	6	2	LOT 6, BLOCK 2, COLLEGE ADDITION	32.4	7.5	7.5	32.4	-	\$ 7,686.30
0400-0200-0700	1451	1ST STREET W	7	2	LOT 7, BLOCK 2, COLLEGE ADDITION	4.7	10.5	10.5	4.7	-	\$ 2,140.90
0400-0500-1200	1452	1ST STREET W	W47' 12	5	W47' LOT 12, BLOCK 5, COLLEGE ADDITION	30.4	47.0	47.0	26.8	3.6	\$ 11,794.60
0400-0200-0800	1459	1ST STREET W	8	2	LOT 8, BLOCK 2, COLLEGE ADDITION	19.1	11.5	11.5	19.1	-	\$ 5,302.70
0400-0500-1100	1460	1ST STREET W	11	5	LOT 11, BLOCK 5, COLLEGE ADDITION	43.4	50.0	50.0	23.3	20.1	\$ 15,917.10
0400-0500-1000	1468	1ST STREET W	10	5	LOT 10, BLOCK 5, COLLEGE ADDITION	31.4	50.0	50.0	31.4	-	\$ 12,106.80
0350-2200-1101	831	2ND STREET W	E70' 11 & 12	22	E70' LOTS 11 & 12, BLOCK 22, YOUNG'S 5TH ADDITION	4.9	10.5	10.5	4.9	-	\$ 2,183.30
0350-2300-1201	929	2ND STREET W	E70' 12	23	E70' LOT 12, BLOCK 23, YOUNG'S 5TH ADDITION	27.2	13.0	13.0	-	27.2	\$ 8,897.00
0610-0400-0101	1111	2ND STREET W	N56' 1	4	N56' LOT 1, BLOCK 4, AUDITOR'S PLAT #4	57.4	35.0	35.0	57.4	-	\$ 15,983.80
0610-0400-0601	1141	2ND STREET W	N51' 6	4	N51' LOT 6, BLOCK 4, AUDITOR'S PLAT #4	36.5	32.0	32.0	6.2	30.3	\$ 13,134.90
0370-3900-0100	707	5TH STREET W	1	39	LOT 1, BLOCK 39, YOUNG'S 7TH ADDITION	7.2	11.5	11.5	7.2	-	\$ 2,779.90
0370-3900-1200	444	8TH AVENUE W	12	39	LOT 12, BLOCK 39, YOUNG'S 7TH ADDITION	-	-	-	-	-	\$ -
0350-2400-0600	5	9TH AVENUE W	6	24	LOT 6, BLOCK 24, YOUNG'S 5TH ADDITION	11.0	32.5	32.5	-	11.0	\$ 6,567.50
0350-2400-0500	11	9TH AVENUE W	5	24	LOT 5, BLOCK 24, YOUNG'S 5TH ADDITION	20.7	50.0	50.0	7.2	13.5	\$ 10,688.90
0350-2400-0400	21	9TH AVENUE W	4	24	LOT 4, BLOCK 24, YOUNG'S 5TH ADDITION	29.7	50.0	50.0	29.7	-	\$ 11,746.40
0350-2400-0300	29	9TH AVENUE W	3	24	LOT 3, BLOCK 24, YOUNG'S 5TH ADDITION	27.3	50.0	50.0	27.3	-	\$ 11,237.60
0350-2400-0200	35	9TH AVENUE W	2	24	LOT 2, BLOCK 24, YOUNG'S 5TH ADDITION	34.9	50.0	50.0	34.9	-	\$ 12,848.80
0350-2100-1102	44	9TH AVENUE W	W47' N40' 11	21	W47' N40' LOT 11, W47' LOT 12, BLOCK 21, YOUNG'S 5TH ADDITION	27.8	12.5	12.5	27.8	-	\$ 7,256.10

City of Dickinson - 2025 Watermain and Lead Service Line Replacement Project											
SID No. 202503-01											
Parcel ID	House #	Street	LOT	BLOCK	Legal Description	Removal of Concrete (SY)	Removal of Curb & Gutter (LF)	Curb & Gutter (LF)	Concrete Sidewalk 4" (SY)	Concrete Driveway 6" (SY)	Total Assessment
0350-2400-0101	45	9TH AVENUE W	E76' 1	24	E76' LOT 1, BLOCK 24, YOUNG'S 5TH ADDITION	10.9	54.5	54.5	10.9	-	\$ 8,251.30
0350-2300-0600	105	9TH AVENUE W	6	23	LOT 6, BLOCK 23, YOUNG'S 5TH ADDITION	31.6	56.0	56.0	31.6	-	\$ 12,803.20
0350-2200-0800	112	9TH AVENUE W	8	22	LOT 8, BLOCK 22, YOUNG'S 5TH ADDITION	29.6	17.0	17.0	29.6	-	\$ 8,128.20
0350-2300-0500	113	9TH AVENUE W	5	23	LOT 5, BLOCK 23, YOUNG'S 5TH ADDITION	42.0	50.0	50.0	30.9	-	\$ 12,178.40
0350-2300-0400	121	9TH AVENUE W	4	23	LOT 4, BLOCK 23, YOUNG'S 5TH ADDITION	22.3	50.0	50.0	9.5	12.8	\$ 10,984.00
0350-2200-0900	122	9TH AVENUE W	9	22	LOT 9, BLOCK 22, YOUNG'S 5TH ADDITION	22.0	13.5	13.5	22.0	-	\$ 6,135.50
0350-2300-0300	127	9TH AVENUE W	3	23	LOT 3, BLOCK 23, YOUNG'S 5TH ADDITION	26.0	50.5	50.5	8.9	17.1	\$ 12,093.80
0350-2200-1000	130	9TH AVENUE W	10	22	LOT 10, BLOCK 22, YOUNG'S 5TH ADDITION	17.5	12.0	12.0	17.5	-	\$ 5,018.00
0350-2300-0200	137	9TH AVENUE W	2	23	LOT 2, BLOCK 23, YOUNG'S 5TH ADDITION	35.8	50.0	50.0	15.9	19.9	\$ 14,293.30
0350-2200-1100	138	9TH AVENUE W	W71' 11	22	W71' LOT 11, BLOCK 22, YOUNG'S 5TH ADDITION	5.6	12.0	12.0	5.6	-	\$ 2,495.20
0350-2300-0100	143	9TH AVENUE W	1	23	LOT 1, BLOCK 23, YOUNG'S 5TH ADDITION	10.3	56.5	56.5	10.3	-	\$ 8,342.10
0350-2200-1200	144	9TH AVENUE W	W71' 12	22	W71' LOT 12, BLOCK 22, YOUNG'S 5TH ADDITION	21.6	10.5	10.5	21.6	-	\$ 5,723.70
5030-0000-0200	291	CAMPUS DRIVE	-	-	UNPLATTED COLLEGE GROUNDS, 4-139-96	153.6	153.5	153.5	132.0	21.6	\$ 50,655.50
0400-0200-0101	35	COLLEGE AVENUE	S70' 1, 2 & 3	2	S70' LOTS 1-3, BLOCK 2, COLLEGE ADDITION	-	-	-	-	-	
0400-0100-0600	44	COLLEGE AVENUE	6	1	LOT 6, BLOCK 1, COLLEGE ADDITION	24.9	17.0	17.0	24.9	-	\$ 7,131.80
0400-0200-0102	45	COLLEGE AVENUE	N70' 1, 2 & 3	2	N70' LOTS 1-3, BLOCK 2, COLLEGE ADDITION	72.5	47.0	47.0	72.5	-	\$ 20,493.00
0400-0400-0700	106	COLLEGE AVENUE	7	4	LOT 7, BLOCK 4, COLLEGE ADDITION	28.5	51.5	51.5	28.5	-	\$ 11,655.50
0350-2600-0300	22	S 10TH AVENUE W	3 - 5	26	LOTS 3-5, BLOCK 26, YOUNG'S 5TH ADDITION PLUS PORTION VACATED STREET	-	-	-	-	-	
0350-2500-0700	23	S 10TH AVENUE W	7 - 10	25	LOTS 7-10, BLOCK 25, YOUNG'S 5TH ADDITION PLUS PORTION VACATED STREET	-	-	-	-	-	
0350-1900-0400	28	S 7TH AVENUE W	3-7	19	LOTS 3-7 PLUS 12' VACATED 7TH AVENUE WEST ADJACENT TO LOT 4 PLUS 8' VACATED 8TH AVENUE WEST ADJACENT TO LOT 5, BLOCK 19, YOUNG'S 5TH ADDITION PLUS FORMER BN LEASE SITE #243674	-	63.0	63.0	-	-	\$ 6,867.00
0350-1900-0100	-	S 7TH AVENUE W	1-2	19	LOTS 1 & 2, BLOCK 19, YOUNG'S 5TH ADDITION	36.3	87.0	87.0		36.3	\$ 19,465.50
0030-0100-0500	633	WEST VILLARD	6, S25' 7	A	LOTS 5, 6, S25' LOT 7, PLUS 9' VACATED ALLEY, BLOCK A, FRYE'S ADDITION PLUS A PORTION OF FORMER BN LEASE SITE #230097	49.6	13.5	13.5	49.6	-	\$ 11,986.70
0030-0100-0800	635	WEST VILLARD	N25' 7, ALL 8.....	A	N25' LOT 7, ALL LOT 8, N75' W9' VACATED ALLEY, BLOCK A, FRYE'S ADDITION	32.6	10.0	10.0	2.2	30.4	\$ 9,916.40
0350-2100-0500	840	WEST VILLARD	5 - 10, S10' 11	21	LOTS 5-10, S10' LOT 11, BLOCK 21, YOUNG'S 5TH ADDITION	64.0	-	-	58.6	5.4	\$ 13,908.20
0350-2500-1101	927	WEST VILLARD	W1/2 11 & 12	25	W1/2 LOTS 11 & 12, BLOCK 25, YOUNG'S 5TH ADDITION	39.8	-	-	-	39.8	\$ 10,945.00
0350-2600-0101	1009	WEST VILLARD	E84' 1 & 2	26	E84' LOTS 1 & 2, BLOCK 26, YOUNG'S 5TH ADDITION	25.3	94.5	94.5	-	25.3	\$ 17,258.00
0610-0200-0100	1214	WEST VILLARD	PORTION 1	2	PORTION LOT 1, BLOCK 2, AUDITOR'S PLAT #4	54.8	-	-	42.3	12.5	\$ 12,405.10
0610-0200-0201	1230	WEST VILLARD	E100' 2	2	E100' LOT 2, BLOCK 2, AUDITOR'S PLAT #4	52.3	-	-	52.3	-	\$ 11,087.60
0610-0200-0200	1260	WEST VILLARD	W213' 2	2	W213' LOT 2, BLOCK 2, AUDITOR'S PLAT #4	58.2	8.5	8.5	58.2	-	\$ 13,264.90
Total Assessment Items:						2580.8	2959.5	2959.5	1876.0	693.7	\$ 911,242.60