

# Facility Plan Water Main and Lead Service Line Replacement – Phase II

Presented by: Josh Skluzacek and Scott Schneider

Tuesday March 18, 2025

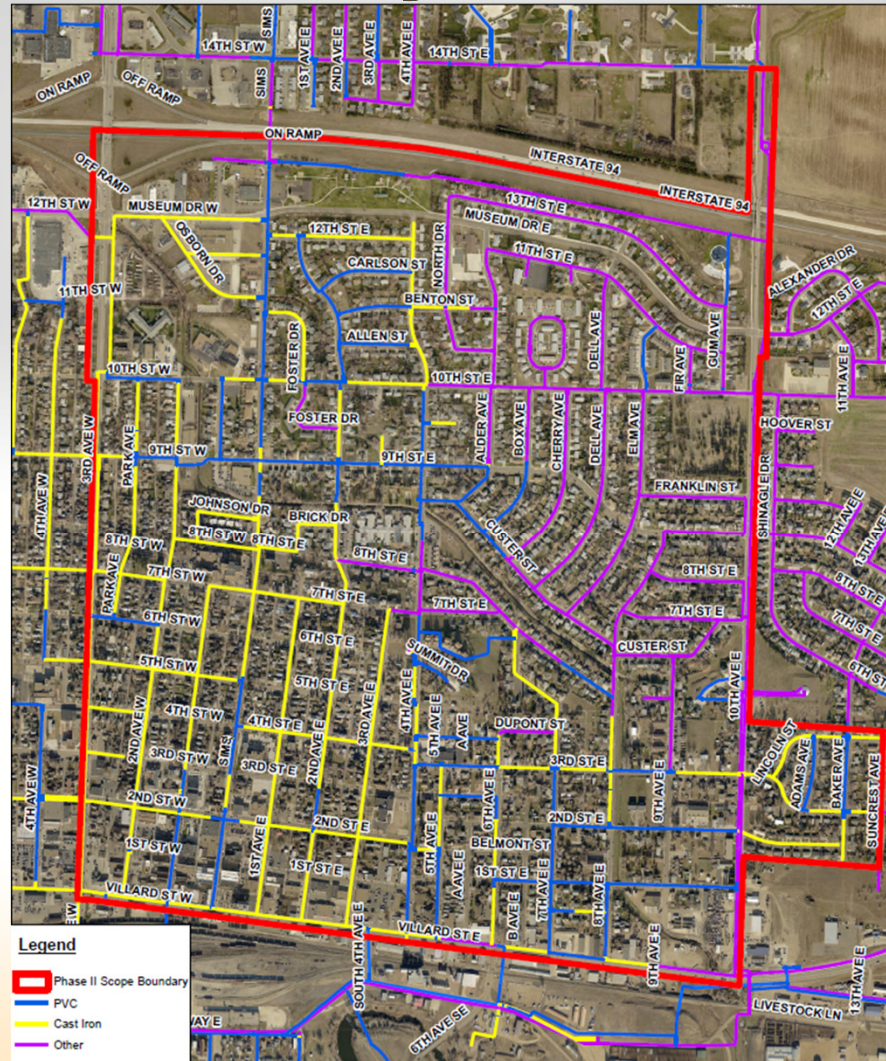
DWSRF Loan Facility Plan Public Hearing



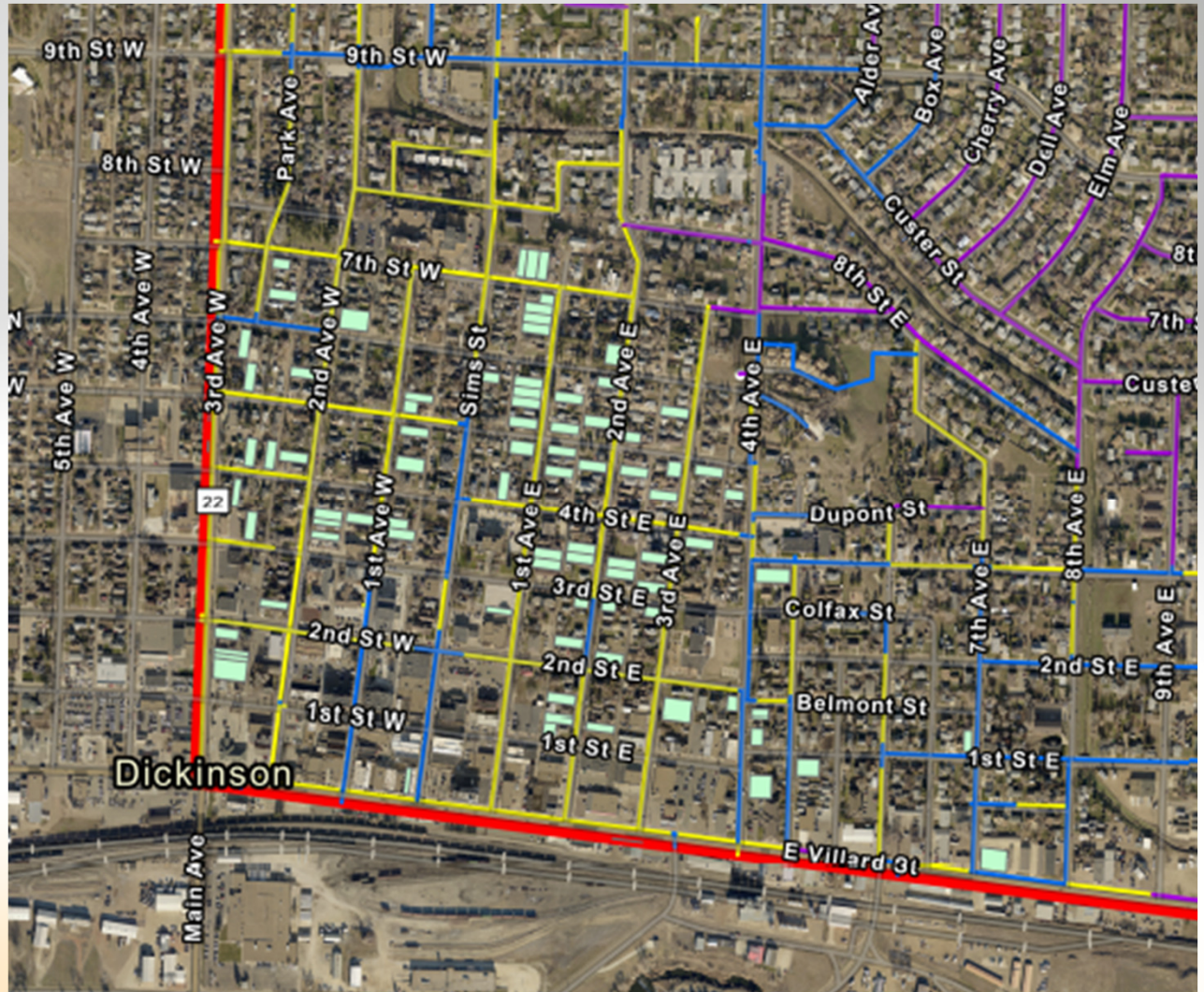
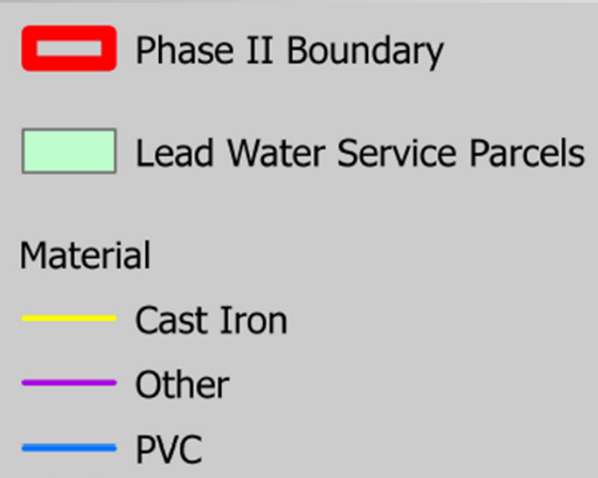
# State Revolving Fund Program

- Low Interest Loans for Water and Wastewater Projects
- Funded through EPA
- Administered by NDDEQ and Public Finance Authority (PFA)
- Two Categories
  - Drinking Water SRF
  - Clean Water SRF
- 2.0% Interest Rate Up to 30-Years
- SRF Projects Require a Facility Plan
- Facility Plans Are Typically Usable for 5 Years

# Watermain Facility Plan Study Area



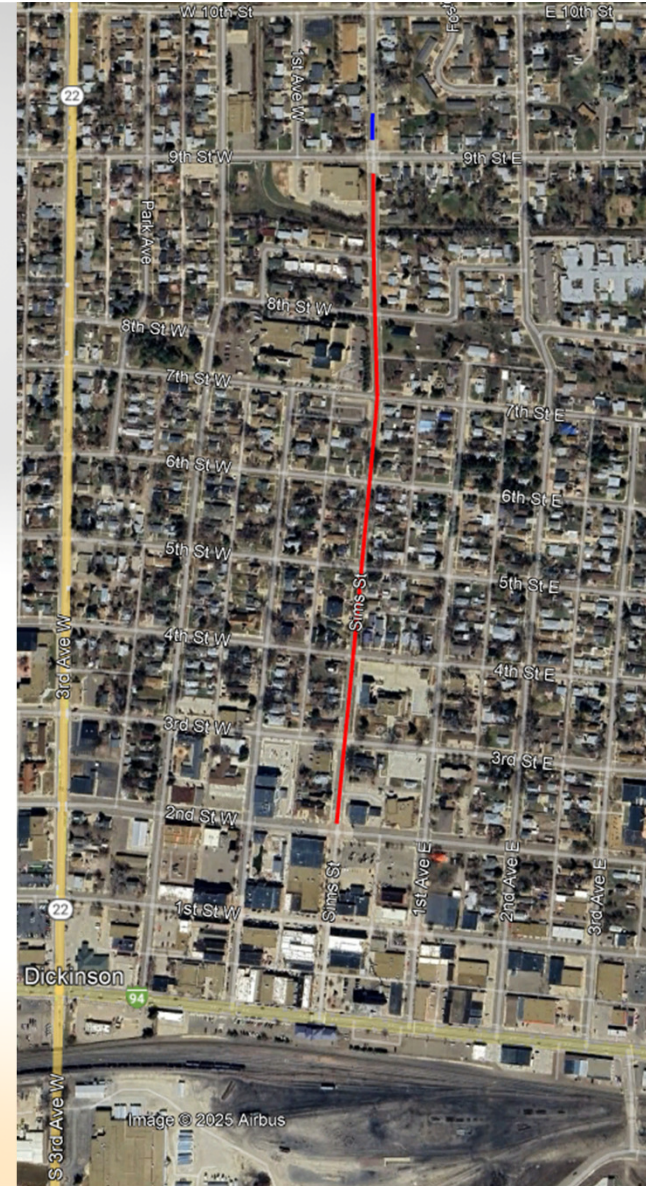
# Facility Plan Lead Service Lines



# Sims - 2<sup>nd</sup> St. E. to 9<sup>th</sup> St. E.

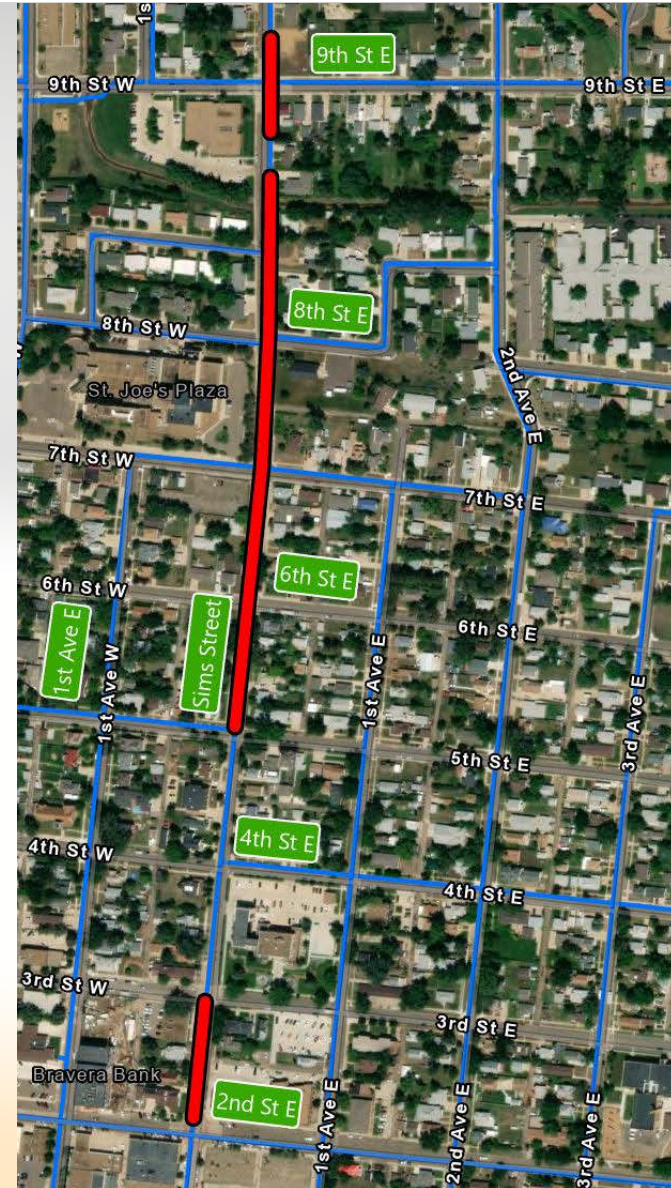
Project limits includes  
the 2<sup>nd</sup> St E to 9<sup>th</sup> St E

- RED = Reconstruction
- BLUE = Mill & Overlay



# Sims St. 6-inch Cast Iron Watermain Replacement

- Eligible for DWSRF Loan
  - Approximately 1,950 LF
  - Anticipate 2 Lead Service Lines Replacements
- RED = Replacement
- BLUE = Existing PVC Watermains



*Thank you!*

**QUESTIONS AND COMMENTS ARE WELCOME**



[www.DickinsonGov.com](http://www.DickinsonGov.com)

