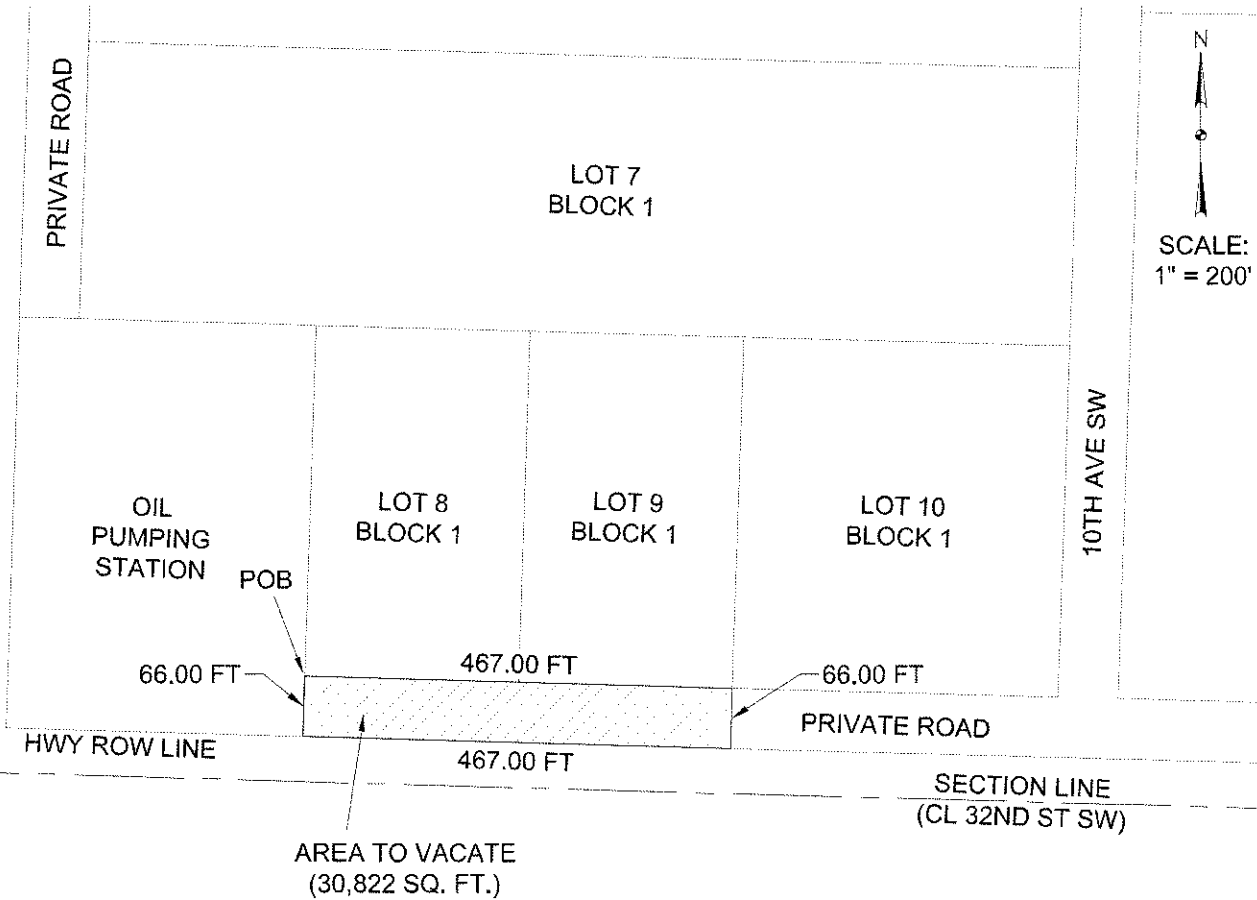


# STREET TO VACATE

NORTHGATE INDUSTRIAL SITE, SECTION 10, TOWNSHIP 140 NORTH,  
RANGE 96 WEST OF THE FIFTH PRINCIPAL MERIDIAN, STARK COUNTY,  
NORTH DAKOTA



## DESCRIPTION

PORTION OF ROAD LOCATED SOUTH OF LOTS 8 AND 9, BLOCK 1, NORTHGATE INDUSTRIAL COMPLEX, SECTION 10, TOWNSHIP 140 NORTH, RANGE 96 WEST OF THE FIFTH PRINCIPAL MERIDIAN, MORE PARTICULARLY DESCRIBED AS FOLLOWS:

BEGINNING AT THE SOUTHWEST CORNER OF SAID LOT 8; THENCE EAST ALONG THE SOUTH SIDE OF SAID LOTS 8 AND 9, A DISTANCE OF 467.00 FEET, TO A POINT BEING THE SOUTHEAST LOT CORNER OF SAID LOT 9; THENCE SOUTH, ALONG AND EXTENDED LINE OF THE EAST LINE OF SAID LOT 9, A DISTANCE OF 66.00 FEET, TO A POINT ON THE NORTH LINE OF A HIGHWAY RIGHT OF WAY LINE; THENCE WEST, ON THE NORTH LINE OF SAID HIGHWAY RIGHT OF WAY LINE, A DISTANCE OF 467.00 FEET; THENCE NORTH, ON AN EXTENDED LINE OF THE WEST LINE OF SAID LOT 8, A DISTANCE OF 66.00 FEET, TO THE POINT OF BEGINNING.

SAID DESCRIBED TRACT CONTAINS, 30,822.00 SQ. FT. OR 0.71 ACRES, MORE OR LESS.