







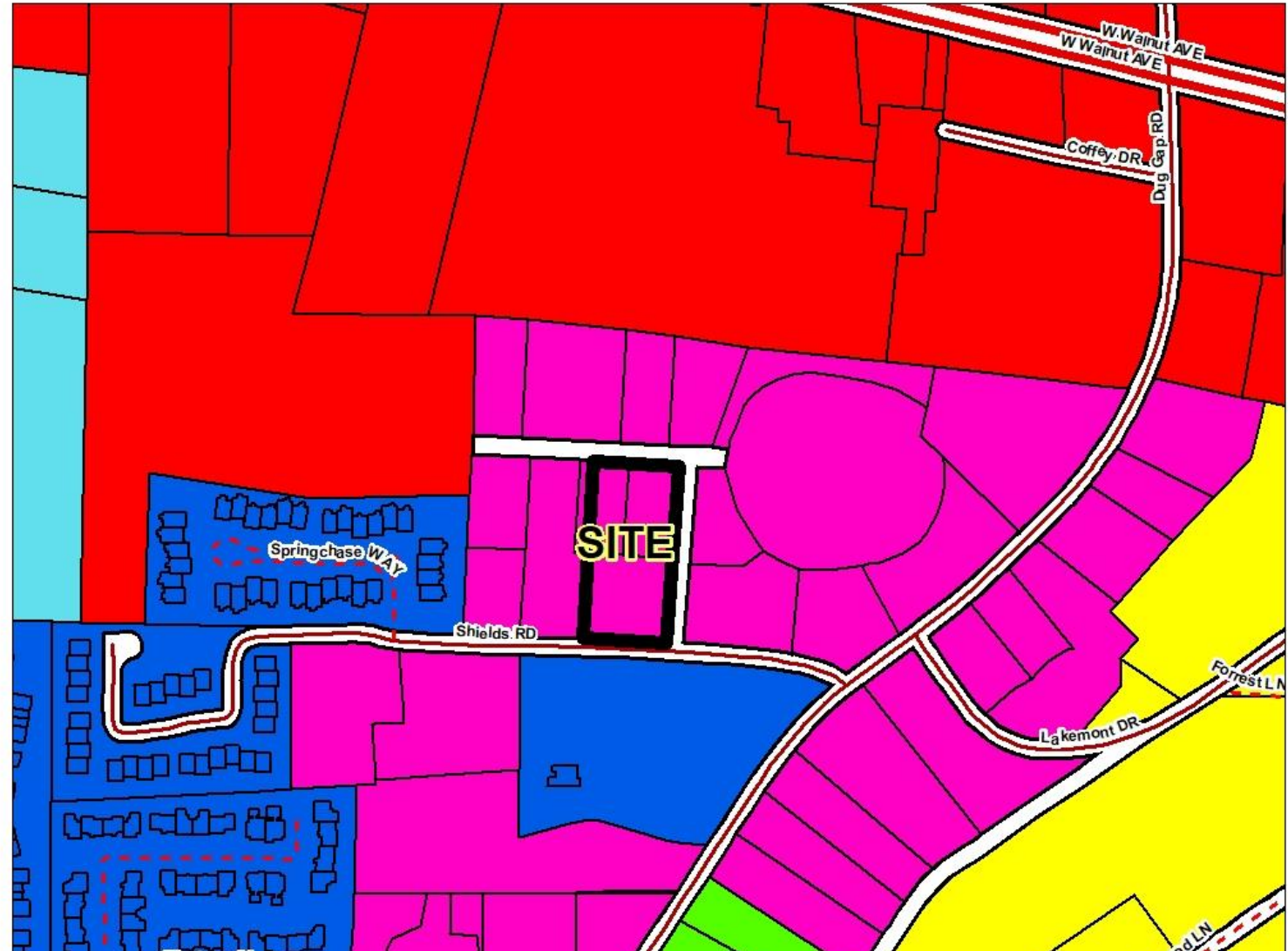


Garcia Special Use Request for Medical Clinic

Zoning: C-1, Neighborhood Commercial City of Dalton Jurisdiction

ZONING	
	Estate Residential (R-1)
	Low Density Single Family Residential (R-2)
	High Density Residential (R-7)
	Mixed Use (MU)
	Neighborhood Commercial (C-1)
	General Commercial (C-2)

FEET
300



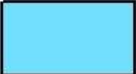


Garcia Special Use Request for Medical Clinic

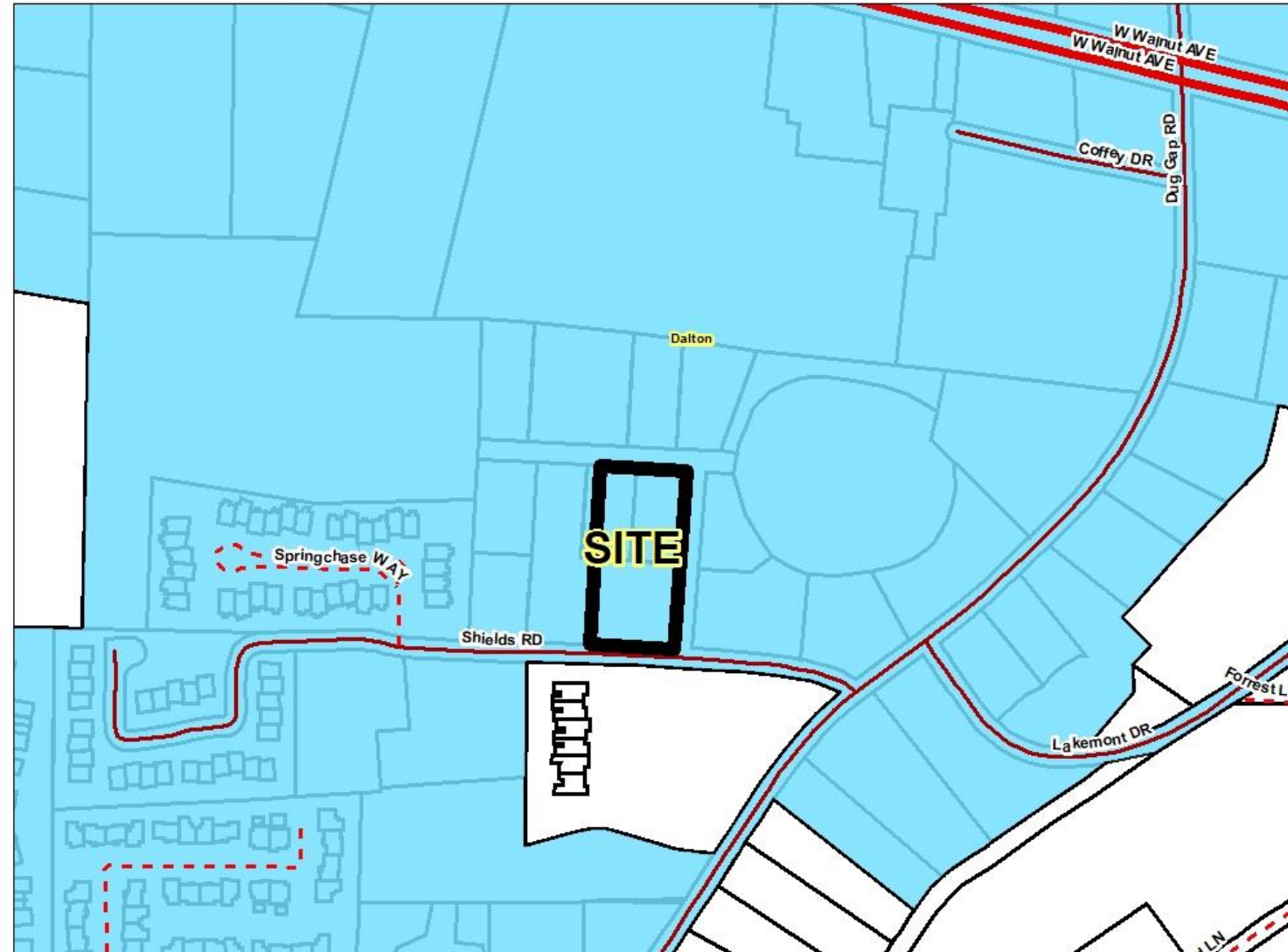
Zoning: C-1, Neighborhood Commercial

City of Dalton Jurisdiction

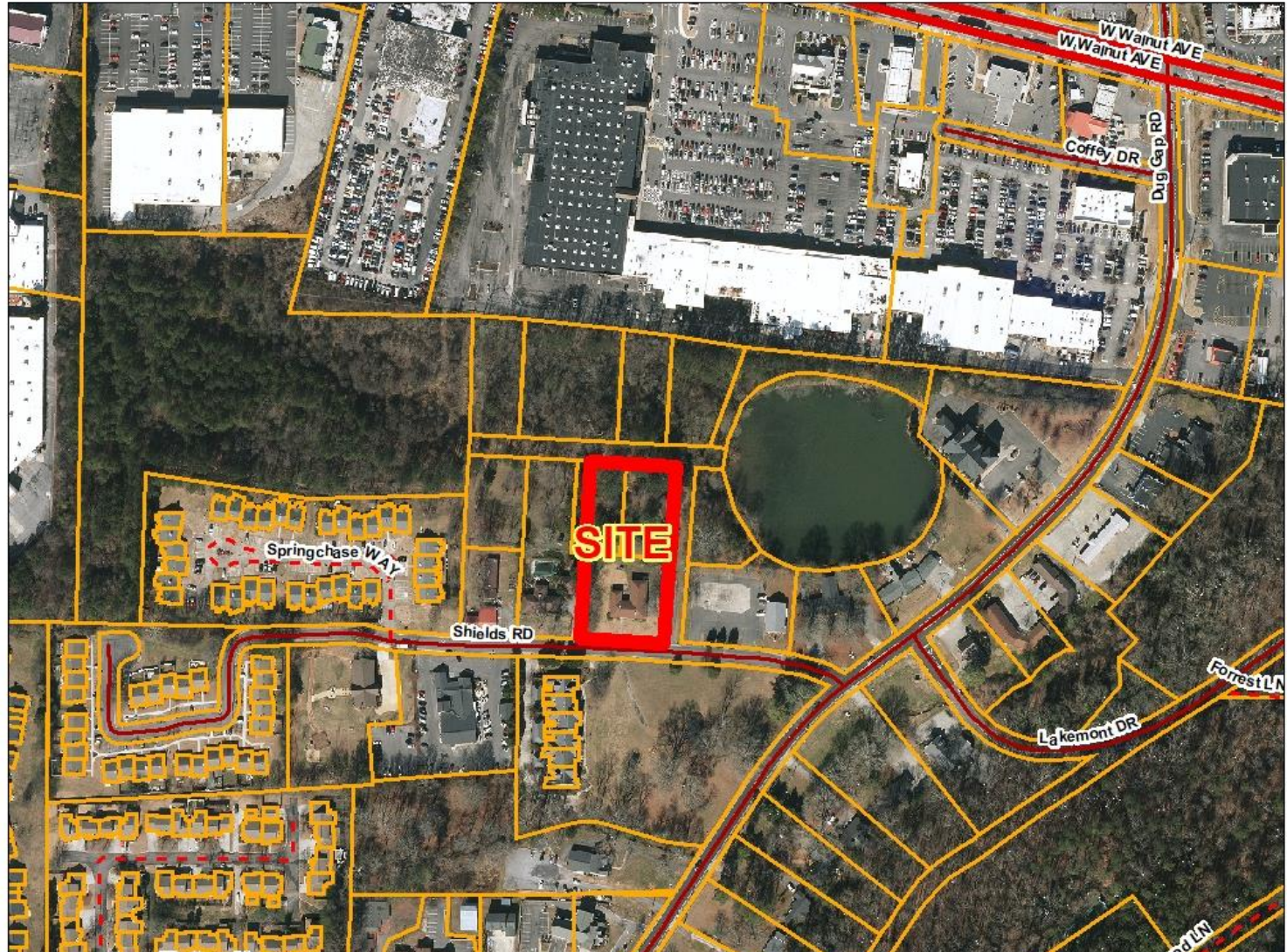
DALTON CITY LIMITS

 Town_Boundaries

FEET
300



Garcia Special Use Request for Medical Clinic Zoning: C-1, Neighborhood Commercial City of Dalton Jurisdiction



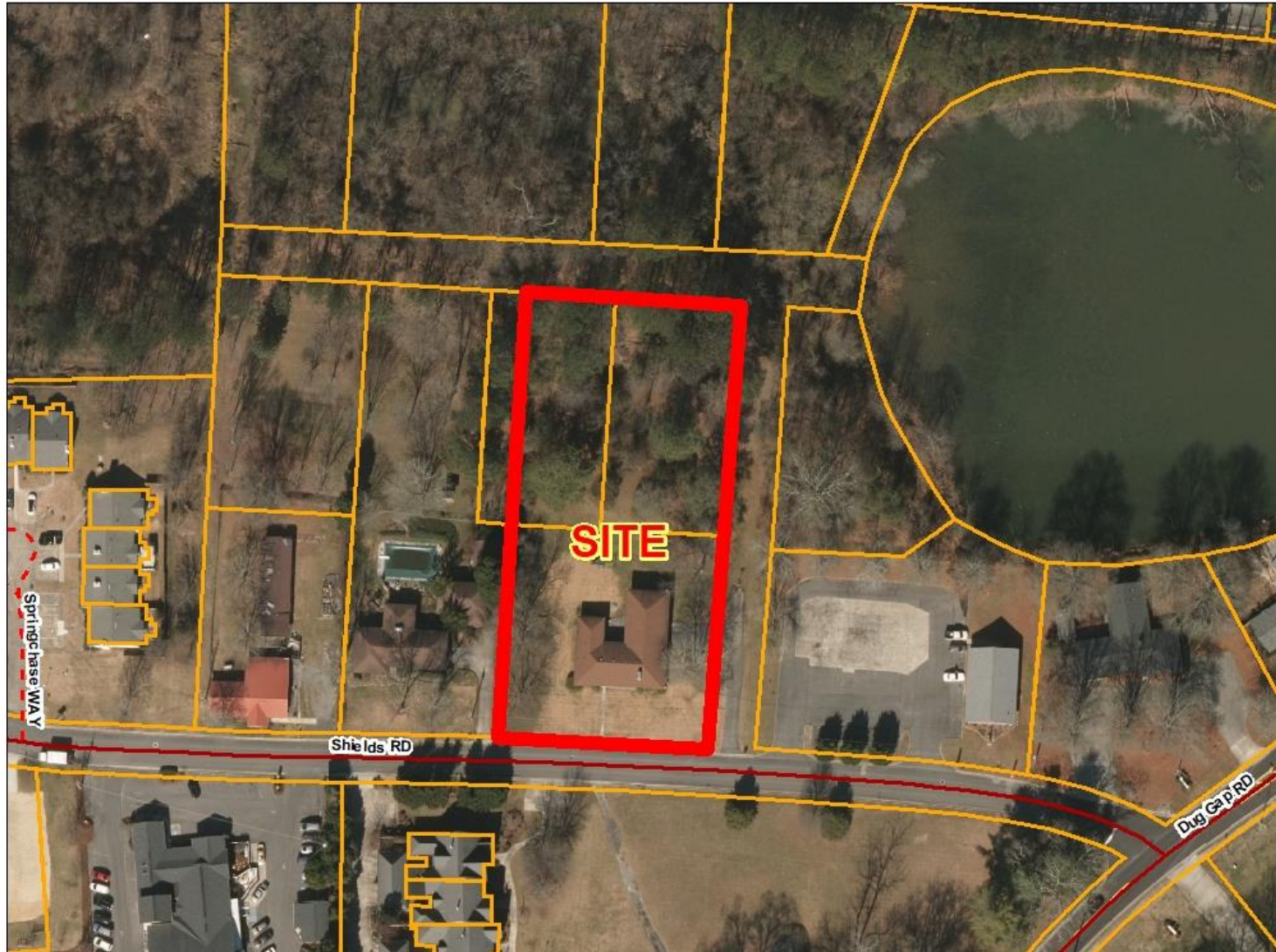
FEET
300



Garcia Special Use Request for Medical Clinic Zoning: C-1, Neighborhood Commercial City of Dalton Jurisdiction



FEET
150



Garcia Special Use Request

for Medical Clinic

Zoning: C-1, Neighborhood Commercial

City of Dalton Jurisdiction



FUTURE DEVELOPMENT MAP

-  Community Activity Center
-  Regional Activity Center
-  Suburban

FEET
300

