

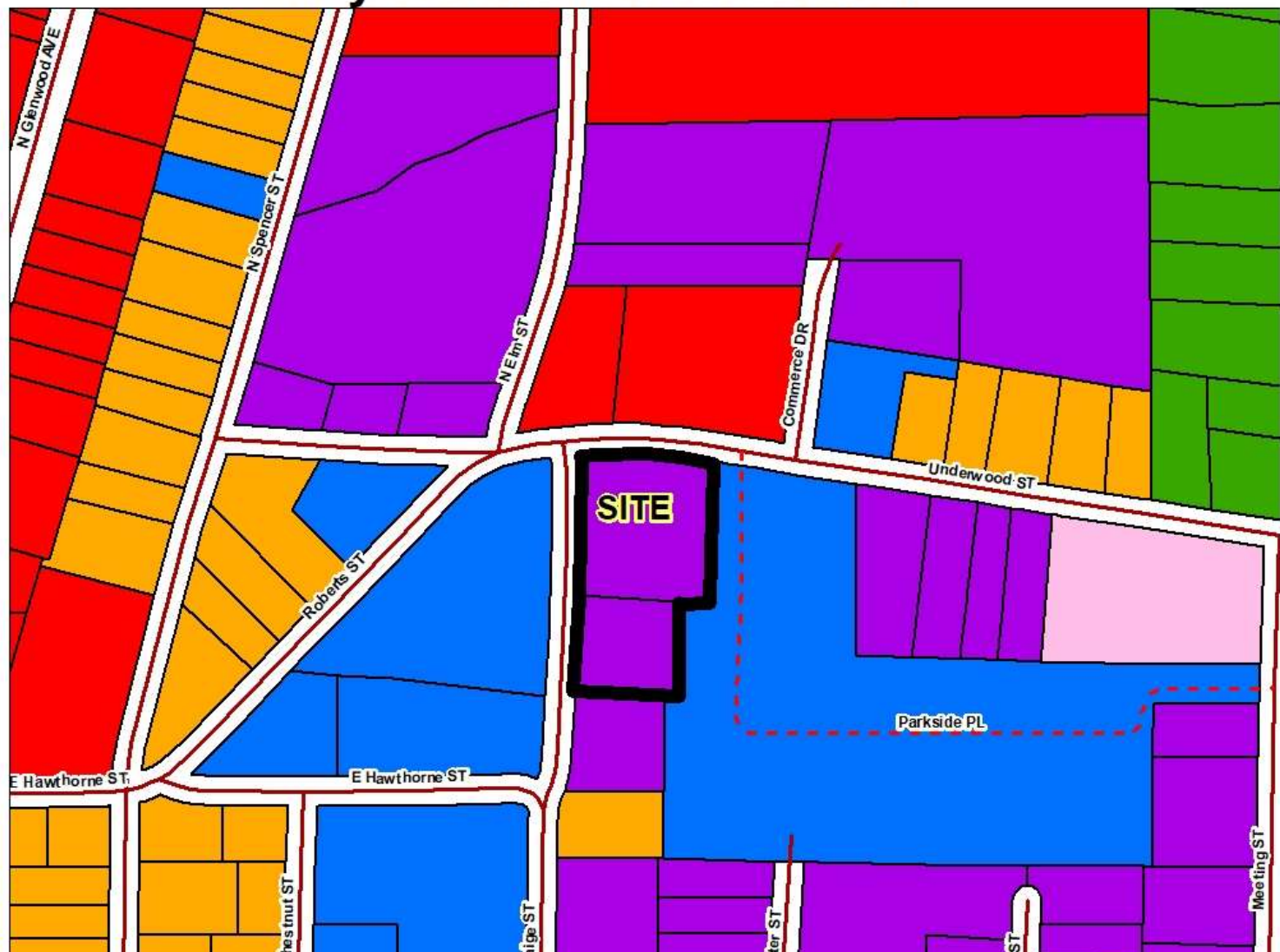
Herrera Rezoning Request M-2, Heavy Manufacturing to R-5, Rural Residential City of Dalton Jurisdiction



Unified Zoning

-  Rural Residential (R-5)
-  Medium Density Single Family Residential (R-3)
-  High Density Residential (R-7)
-  Neighborhood Commercial (C-1)
-  General Commercial (C-2)
-  Heavy Manufacturing (M-2)

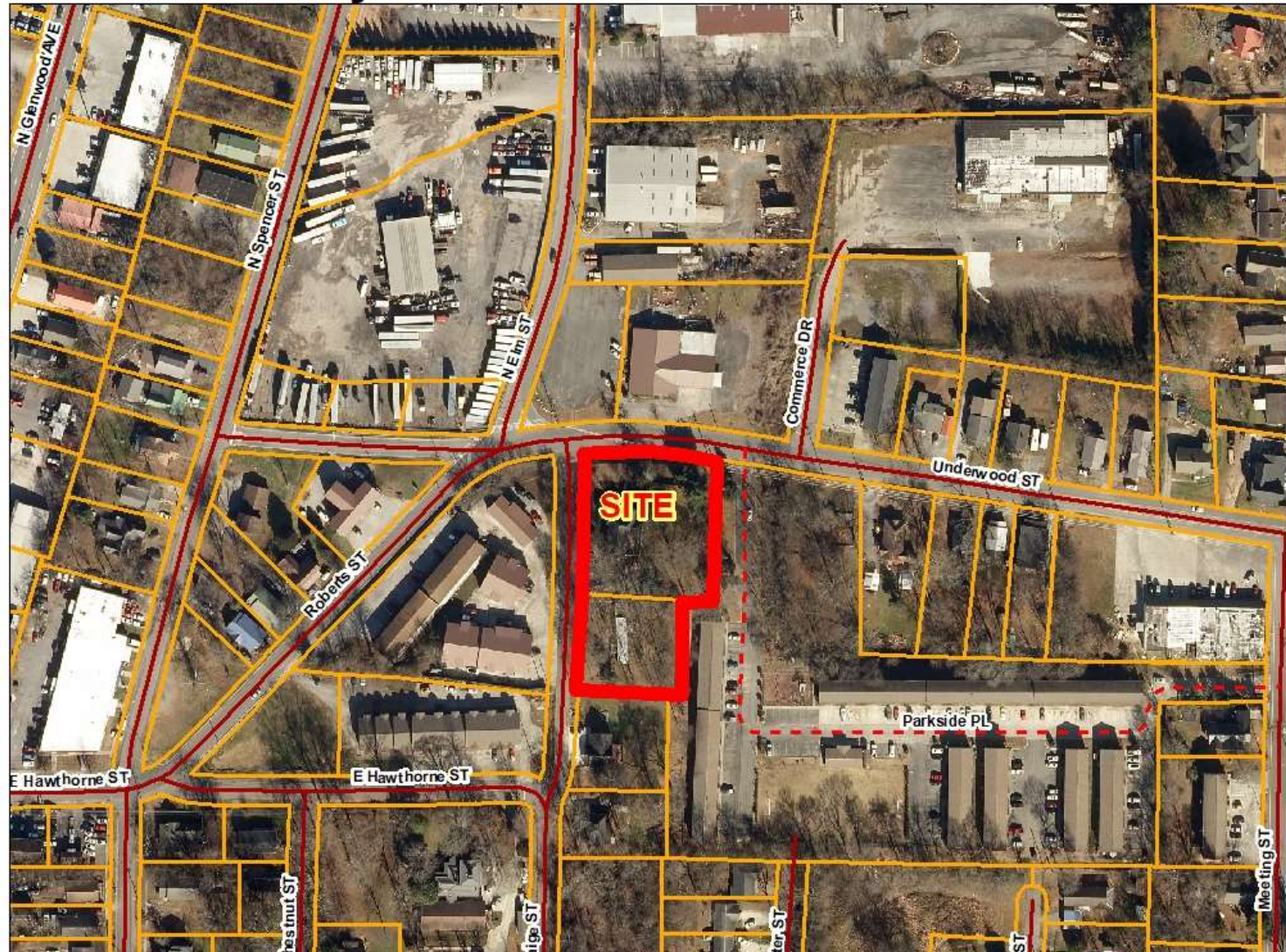
FEET
200



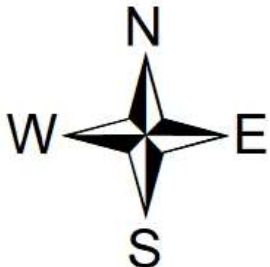
Herrera Rezoning Request M-2, Heavy Manufacturing to R-5, Rural Residential City of Dalton Jurisdiction



FEET
200



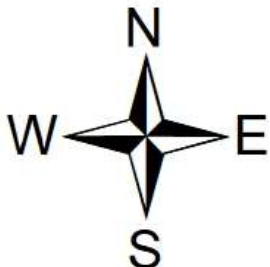
Herrera Rezoning Request
M-2, Heavy Manufacturing
to
R-5, Rural Residential
City of Dalton Jurisdiction



FEET
100



Herrera Rezoning Request M-2, Heavy Manufacturing to R-5, Rural Residential City of Dalton Jurisdiction



FUTURE DEVELOPMENT MAP

-  Commercial Corridor
-  Industrial
-  Town Neighborhood Revitalization

FEET
200

