

# Armstrong Rezoning Request

## R-6 COND, Transitional Residential R-2, Low Density Single Family Residential to R-7, High Density Residential

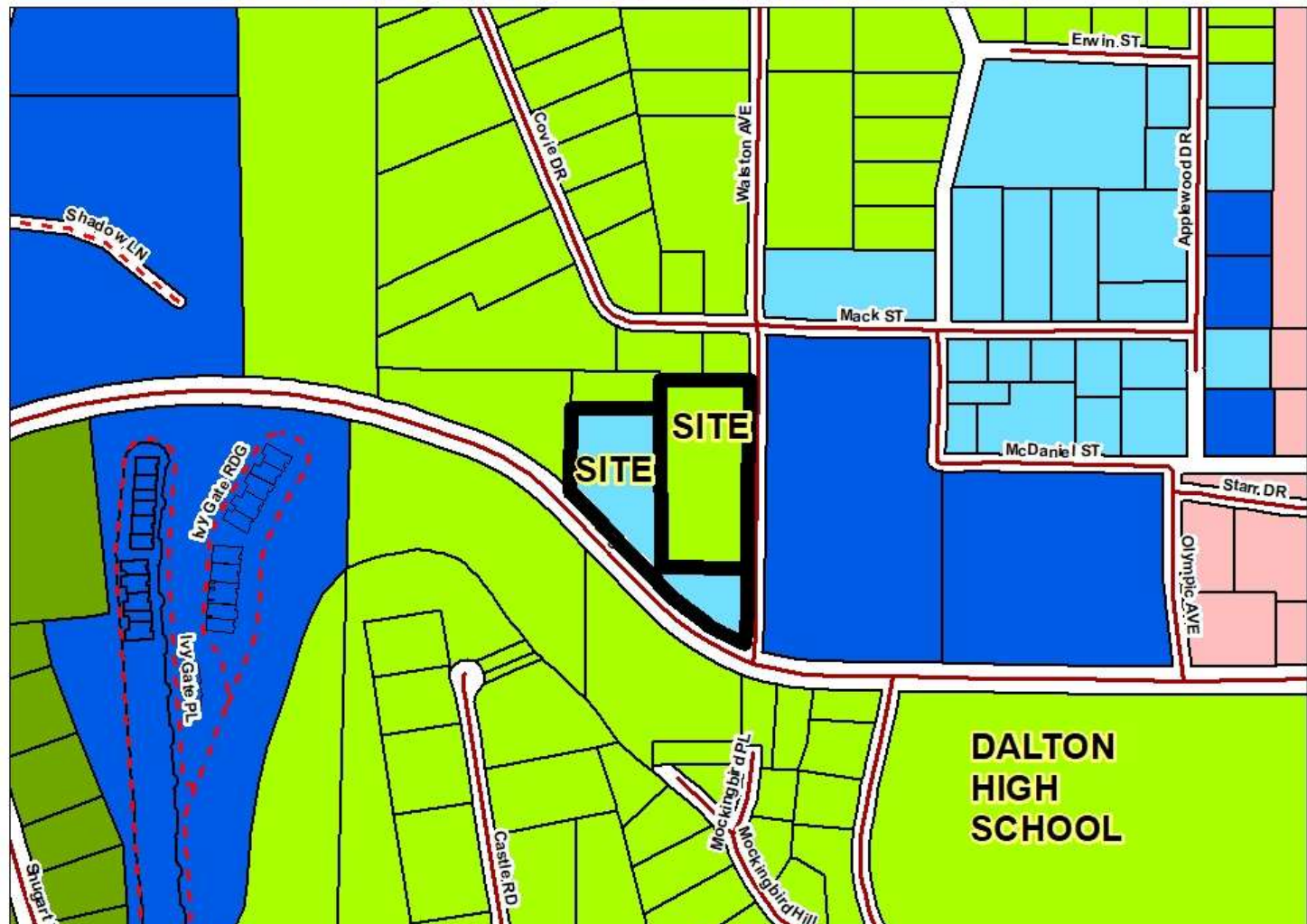
### CITY OF DALTON JURISDICTION

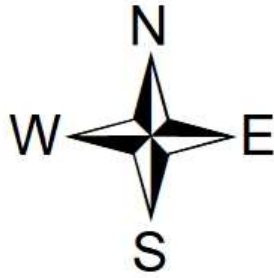


**ZONING DISTRICT**

- Low Density Single Family Residential (R-2)
- Medium Density Single Family Residential (R-3)
- Transitional Residential (R-6) Cond
- Transitional Residential (R-6)
- High Density Residential (R-7)
- Neighborhood Commercial (C-1)

**FEET**  
**400**





# Armstrong Rezoning Request

## R-6 COND, Transitional Residential


## R-2, Low Density Single Family Residential

to

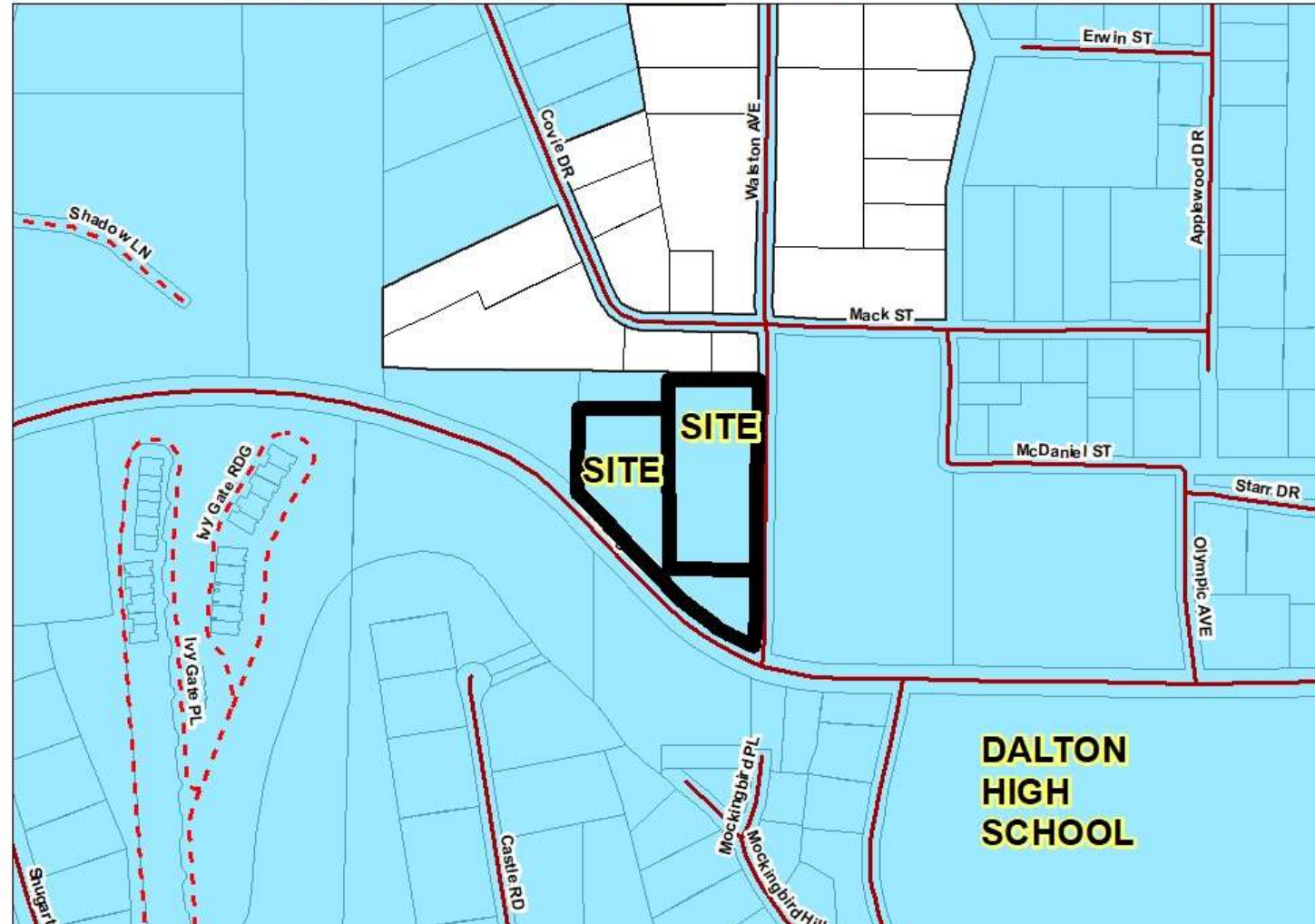
## R-7, High Density Residential

### CITY OF DALTON JURISDICTION

**DALTON CITY LIMITS**

 Town\_Boundaries

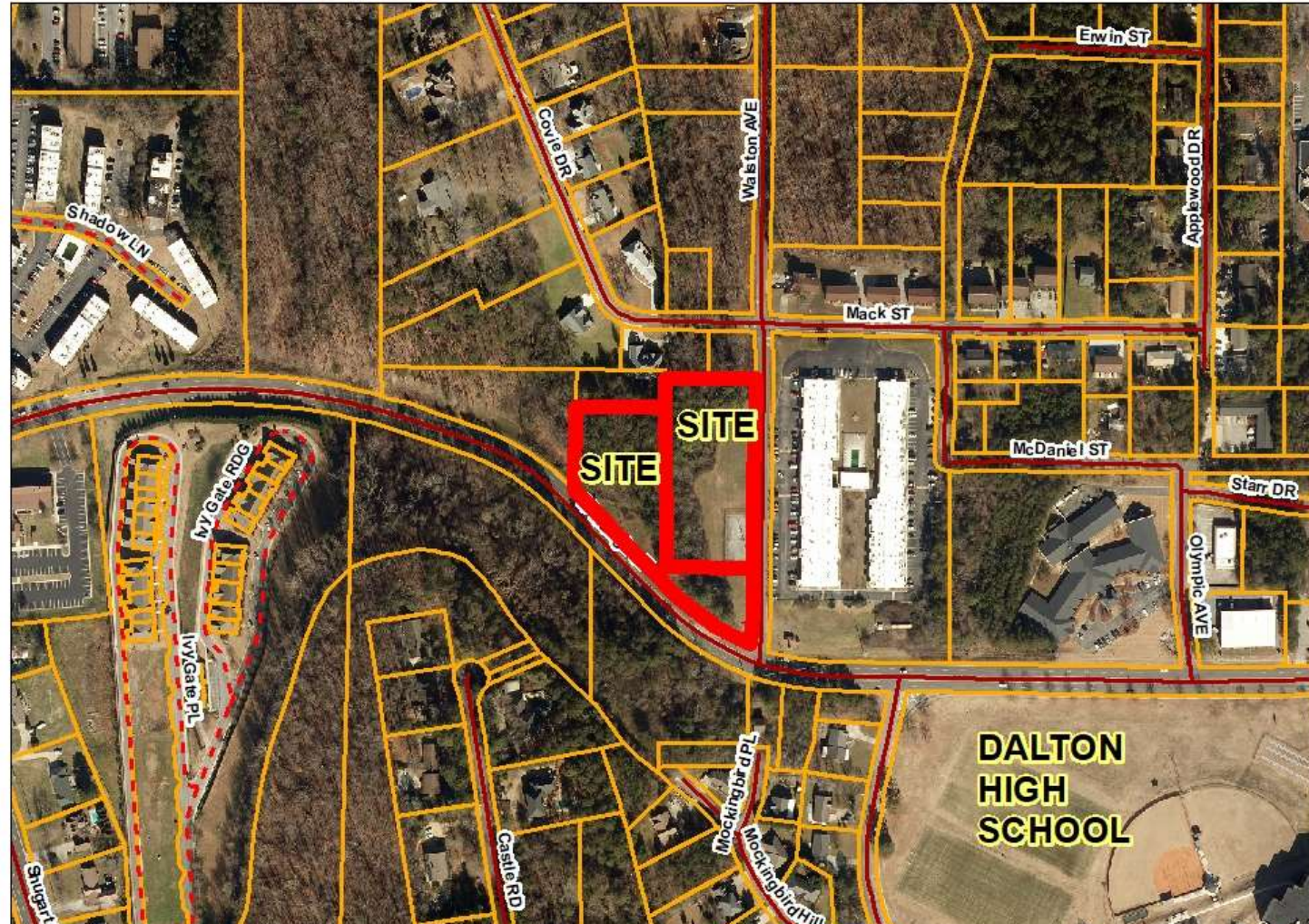
**FEET**  
**400**





**Armstrong Rezoning Request  
R-6 COND, Transitional Residential  
R-2, Low Density Single Family Residential  
to  
R-7, High Density Residential  
CITY OF DALTON JURISDICTION**

**FEET  
400**



**Armstrong Rezoning Request  
R-6 COND, Transitional Residential  
R-2, Low Density Single Family Residential  
to  
R-7, High Density Residential  
CITY OF DALTON JURISDICTION**



**FEET  
200**

A solid black horizontal bar representing a scale of 200 feet.

# Armstrong Rezoning Request R-6 COND, Transitional Residential R-2, Low Density Single Family Residential to R-7, High Density Residential CITY OF DALTON JURISDICTION



**FUTURE DEVELOPMENT MAP**

-  Medical District
-  Preserve
-  Regional Activity Center
-  Suburban Neighborhood

**FEET**  
**400**

