



Dalton Police Department Public Safety Commission Meeting

March 18, 2025

TABLE OF CONTENTS

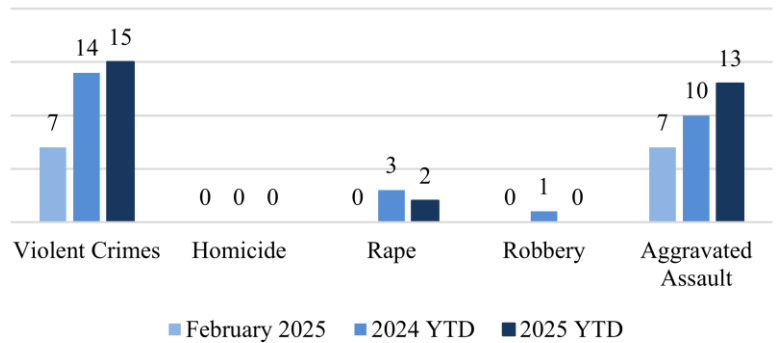
CRIME STATISTICS

CRASH STATISTICS

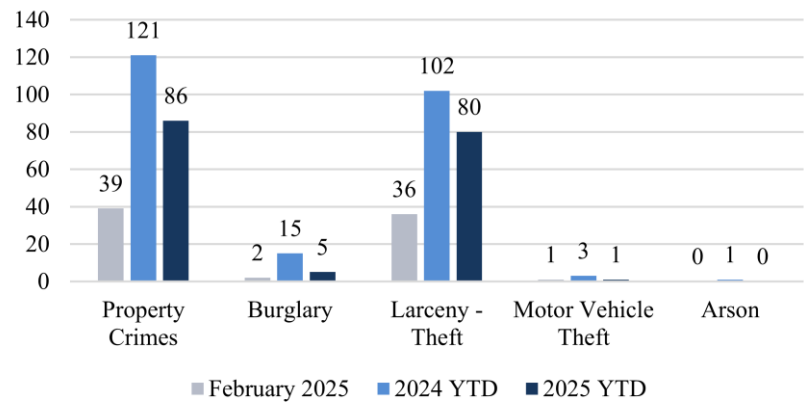
FINANCIAL STATISTICS

FEBRUARY 2025

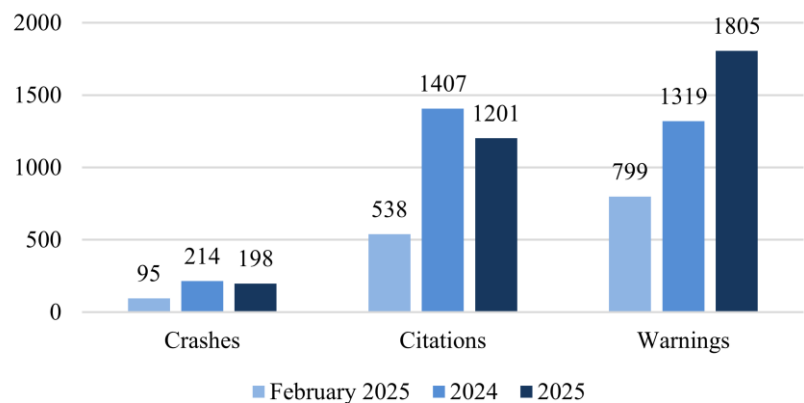
Violent Crimes



Property Crimes



Traffic





PART 1 CRIMES

February 2025

Total Part 1 Crimes			<u>2024 YTD</u>	<u>2025 YTD</u>	<u>YTD Change</u>
			135	101	-25.19%
Violent Crimes			<u>2024 YTD</u>	<u>2025 YTD</u>	<u>YTD Change</u>
	<u>Current</u>		14	15	7.14%
Homicide	0		0	0	0.00%
Rape	0		3	2	-33.33%
Robbery	0		1	0	-100.00%
Aggravated Assault	7		10	13	30.00%
25-000576	2/1/2025	400 S Thornton Ave			
A male subject was arrested after he pointed a gun at the victim's head during a domestic incident in a vehicle.					
25-000840	2/15/2025	2300 Park Canyon Dr			
During a disturbance at this location, a male subject pointed a handgun at the victim. The suspect fled the scene but was later apprehended and charged with aggravated assault.					
25-001050	2/25/2025	905 S Hamilton St			
The suspect fired shots at the victim, but did not strike the victim. The suspect was later apprehended and charged with aggravated assault.					
Property Crimes			<u>2024 YTD</u>	<u>2025 YTD</u>	<u>YTD Change</u>
	<u>Current</u>		121	86	-28.93%
Burglary	2		15	5	-66.67%
Larceny-Theft	36		102	80	-21.57%
Motor Vehicle Theft	1		3	1	-66.67%
Arson	0		1	0	-100.00%

There were 46 Part 1 crimes in February 2025. That is an increase of approximately 4.55% compared to 44 in February 2024. Total Part 1 crimes YTD have decreased by approximately 25.19% when compared to 2024.

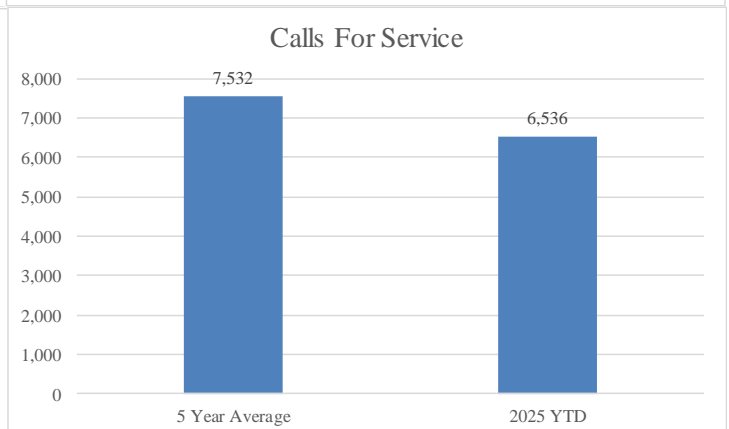
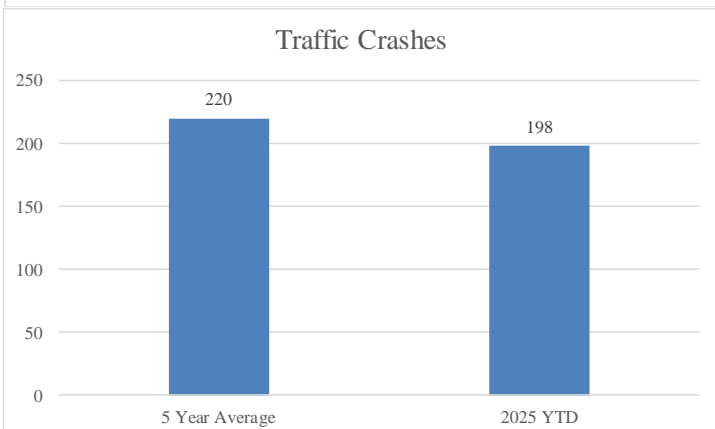
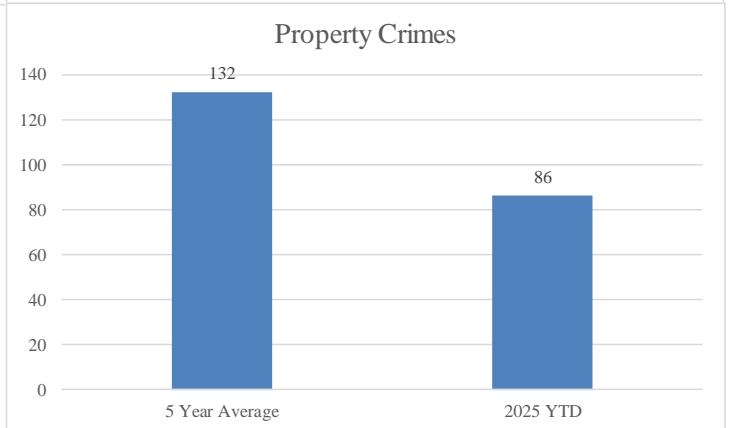
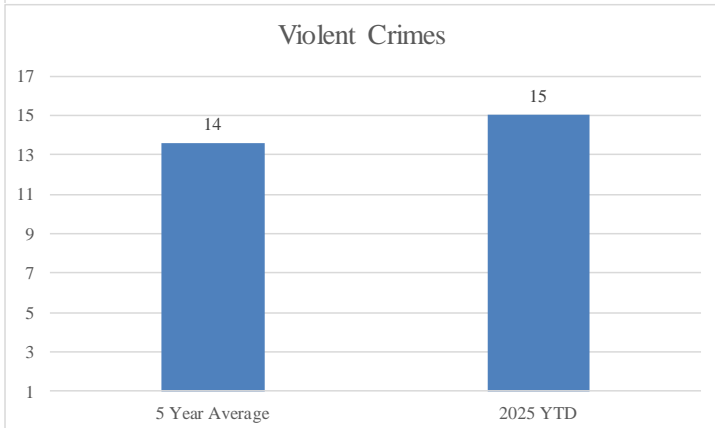
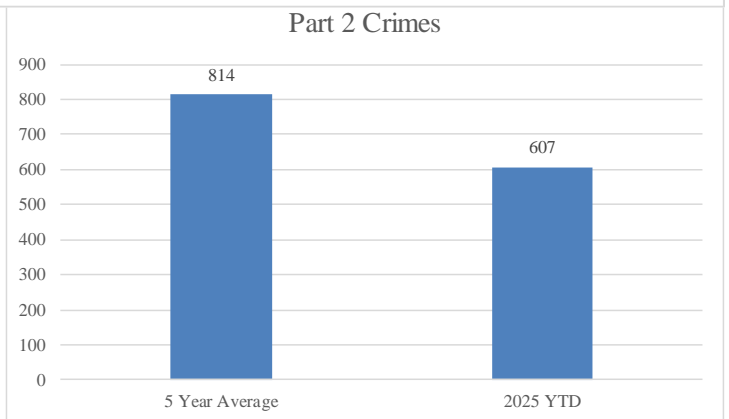
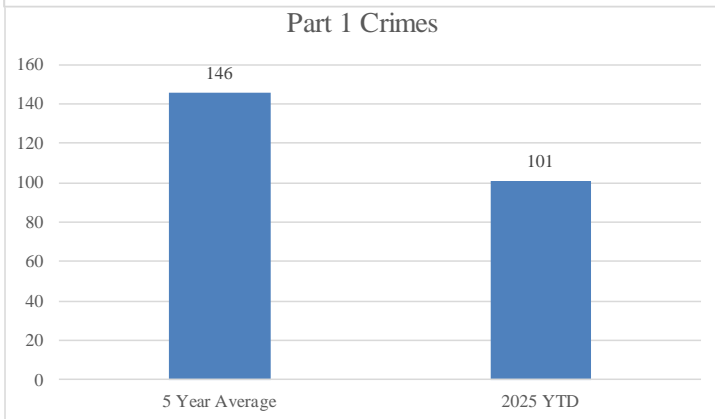
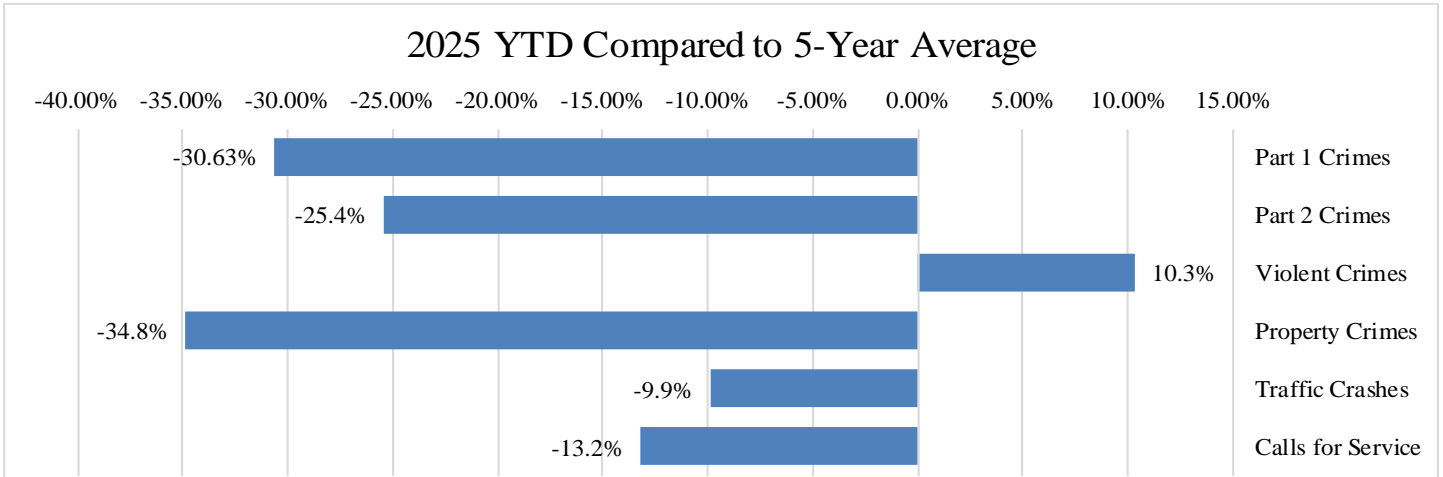
Violent crimes have increased by approximately 7.14% when compared to 2024. There have been 15 violent crimes YTD 2025 compared to 14 in 2024.

Property crimes have decreased by 28.93% when compared to 2024. All categories of property crimes have shown a decrease YTD compared to 2024.



FIVE-YEAR AVERAGE

February 2025





CRASH STATISTICS

February 2025

Traffic crashes decreased by approximately 7.8% when compared to January 2025. Year to date crashes have decreased by approximately 7.5%. Rear end collisions were the most frequent crash types. Following too closely was the most frequent contributing factor. Walnut Ave had the highest number of crashes and injuries.

Total Crashes	Current	Previous	Change	YTD 2025	YTD 2024	Change
	95	103	-7.8%	198	214	-7.5%

Injury Crashes	Total	Complaint	Minor	Serious	Fatality	Multiple
	25	19	4	2	0	8
Total Injuries	40					

DUI Crashes	Speed Crashes	Distracted Crashes	Following Too Closely Crashes
2	1	16	24

Day of the Week	Total	Time of Day	Total
Monday	16	0000 - 0559	5
Tuesday	12	0600 - 0859	11
Wednesday	21	0900 - 1059	8
Thursday	11	1100 - 1359	18
Friday	17	1400 - 1559	17
Saturday	5	1600 - 1859	18
Sunday	13	1900 - 2159	15
		2200 - 2359	3

Collision Type	Total	Contributing Factors	Total
Rear End	39	Following too Closely	24
Angle	36	Failure to Yield	20
Collision with an Object	12	Distracted	16
Sideswipe-Same Direction	8	Disregard Stop Sign/Signal	8

Top Streets	Total Crashes	% Total	Injuries	% Injuries
Walnut Ave	19	20.0%	8	20.0%
Hamilton St	8	8.4%	3	7.5%
Chattanooga Rd	7	7.4%	1	2.5%

	Traffic Stops	Warnings	Citations
February 2025	1093	799	538
2025 YTD	2474	1805	1201
2024 YTD	2466	1319	1407