



Dalton Police Department Public Safety Commission Meeting

December 17, 2024

TABLE OF CONTENTS

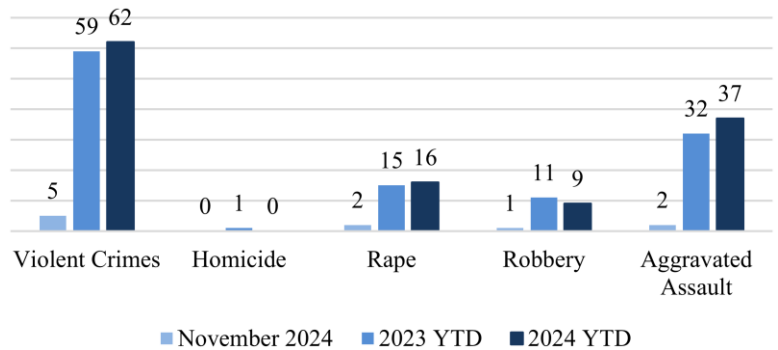
CRIME STATISTICS

CRASH STATISTICS

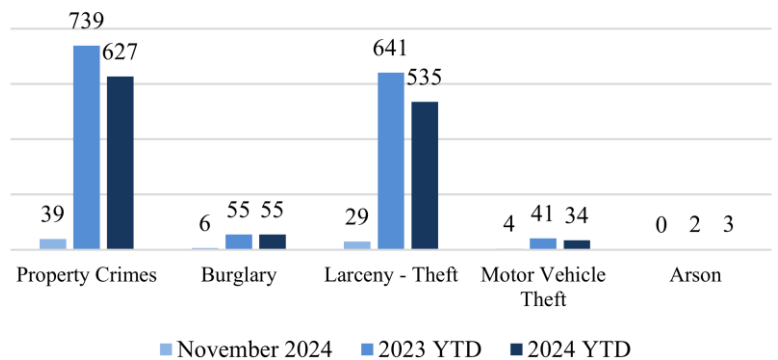
FINANCIAL STATISTICS

NOVEMBER 2024

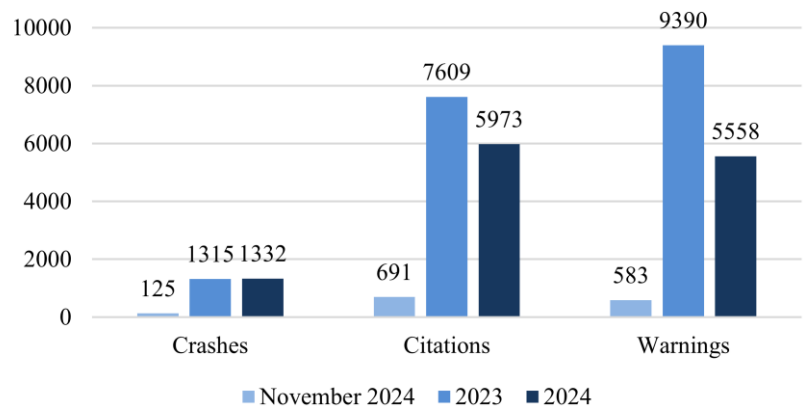
Violent Crimes



Property Crimes



Traffic





PART 1 CRIMES

November 2024

Total Part 1 Crimes			<u>2023 YTD</u>	<u>2024 YTD</u>	<u>YTD Change</u>
			798	689	-13.66%
Violent Crimes			<u>2023 YTD</u>	<u>2024 YTD</u>	<u>YTD Change</u>
		<u>Current</u>			
		5	59	62	5.08%
Homicide		0	1	0	0.00%
Rape		2	15	16	6.67%
Robbery		1	11	9	-18.18%
24-006234	11/15/2024	716 Calhoun St			
The suspect had work done on his vehicle by the victim. The suspect believed the victim had replaced parts on his vehicle with older parts. The suspect arrived at the victim's residence and demanded keys from the victim while displaying a weapon. The suspect was later arrested and charged.					
Aggravated Assault		2	32	37	15.63%
Property Crimes			<u>2023 YTD</u>	<u>2024 YTD</u>	<u>YTD Change</u>
		<u>Current</u>			
		39	739	627	-15.16%
Burglary		6	55	55	0.00%
Larceny-Theft		29	641	535	-16.54%
Motor Vehicle Theft		4	41	34	-17.07%
Arson		0	2	3	50.00%

There were 44 Part 1 crimes in November 2024. That is decrease of approximately 38.0% compared to 71 in November 2023. Total Part 1 crimes YTD have decreased by approximately 13.66% when compared to 2023.

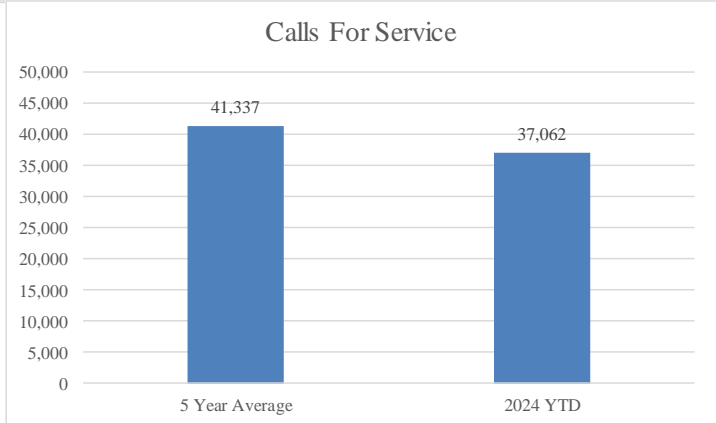
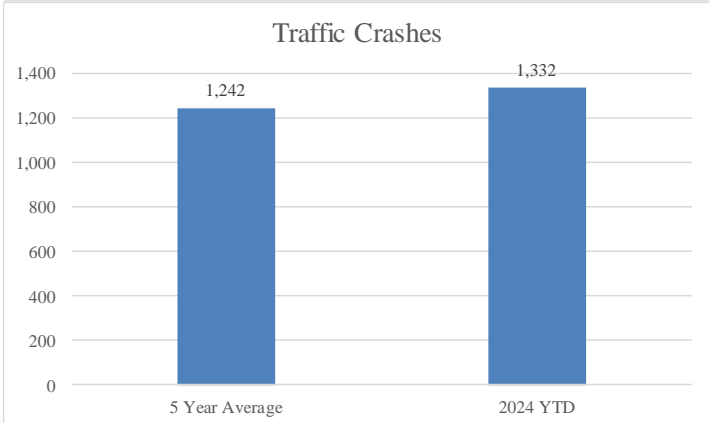
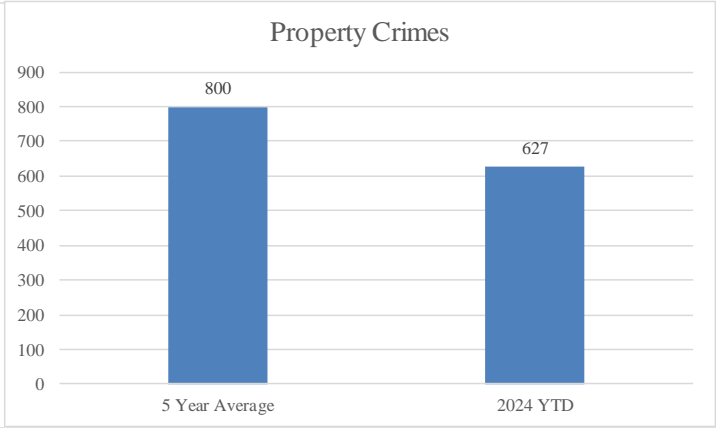
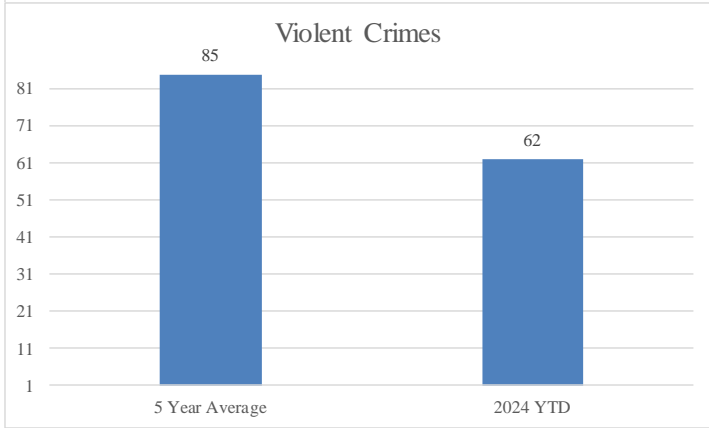
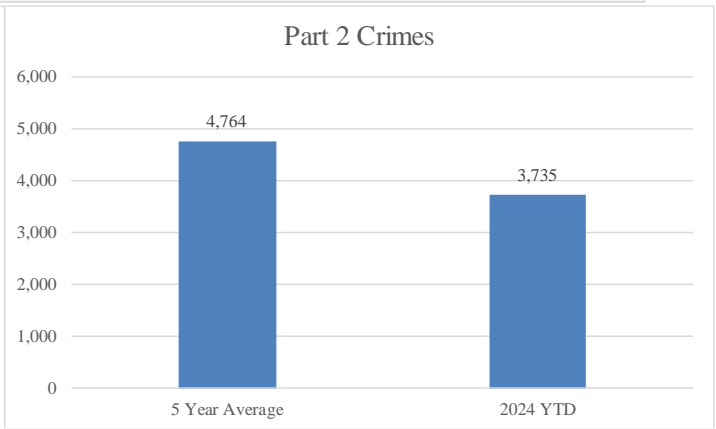
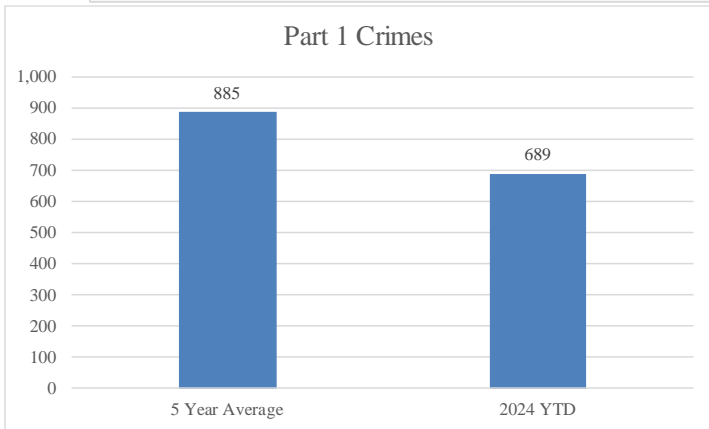
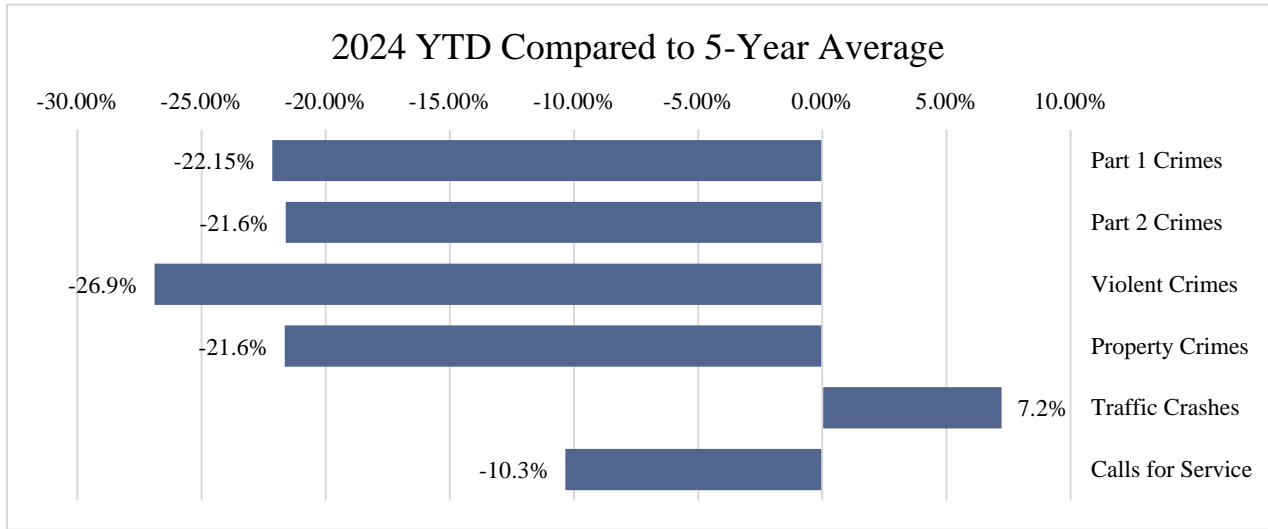
Violent crimes have increased by approximately 5.08% when compared to 2023. There have been 62 violent crimes YTD 2024 compared to 59 in 2023.

Property crimes have decreased by 15.16% when compared to 2023. Larcenies and motor vehicle thefts have decreased, while burglaries have stayed the same YTD compared to 2023 numbers.



FIVE-YEAR AVERAGE

November 2024





CRASH STATISTICS

November 2024

Traffic crashes decreased by approximately 14.4% when compared to October 2024. Year to date crashes have increased by approximately 1.3%. Angle and rear end collisions were the most frequent crash types. Following too closely was the most frequent contributing factor. Walnut Ave had the highest number of crashes. Glenwood Ave had this highest amount of injuries.

Total Crashes	Current	Previous	Change	YTD 2024	YTD 2023	Change
	125	146	-14.4%	1332	1315	1.3%

Injury Crashes	Total	Complaint	Minor	Serious	Fatality	Multiple
	30	17	12	1	0	9
Total Injuries	20					

DUI Crashes	Speed Crashes	Distracted Crashes	Following Too Closely Crashes
2	7	6	24

Day of the Week	Total	Time of Day	Total
Monday	21	0000 - 0559	7
Tuesday	20	0600 - 0859	20
Wednesday	15	0900 - 1059	8
Thursday	22	1100 - 1359	26
Friday	21	1400 - 1559	26
Saturday	18	1600 - 1859	23
Sunday	8	1900 - 2159	12
		2200 - 2359	3

Collision Type	Total	Contributing Factors	Total
Rear End	39	Following too Closely	24
Angle	36	Failure to Yield	24
Collision with an Object	26	Improper Lane Change	15
Sideswipe-Same Direction	17	Distracted	6
Head On	4		
Sideswipe-Opposite Direction	3		

Top Streets	Total Crashes	% Total	Injuries	% Injuries
Walnut Ave	16	12.8%	6	30.0%
Glenwood Ave	15	12.0%	7	35.0%
Chattanooga Rd	14	11.2%	5	25.0%

	Traffic Stops	Warnings	Citations
November 2024	980	583	619
2024 YTD	10185	5558	5973
2023 YTD	17557	9390	7609