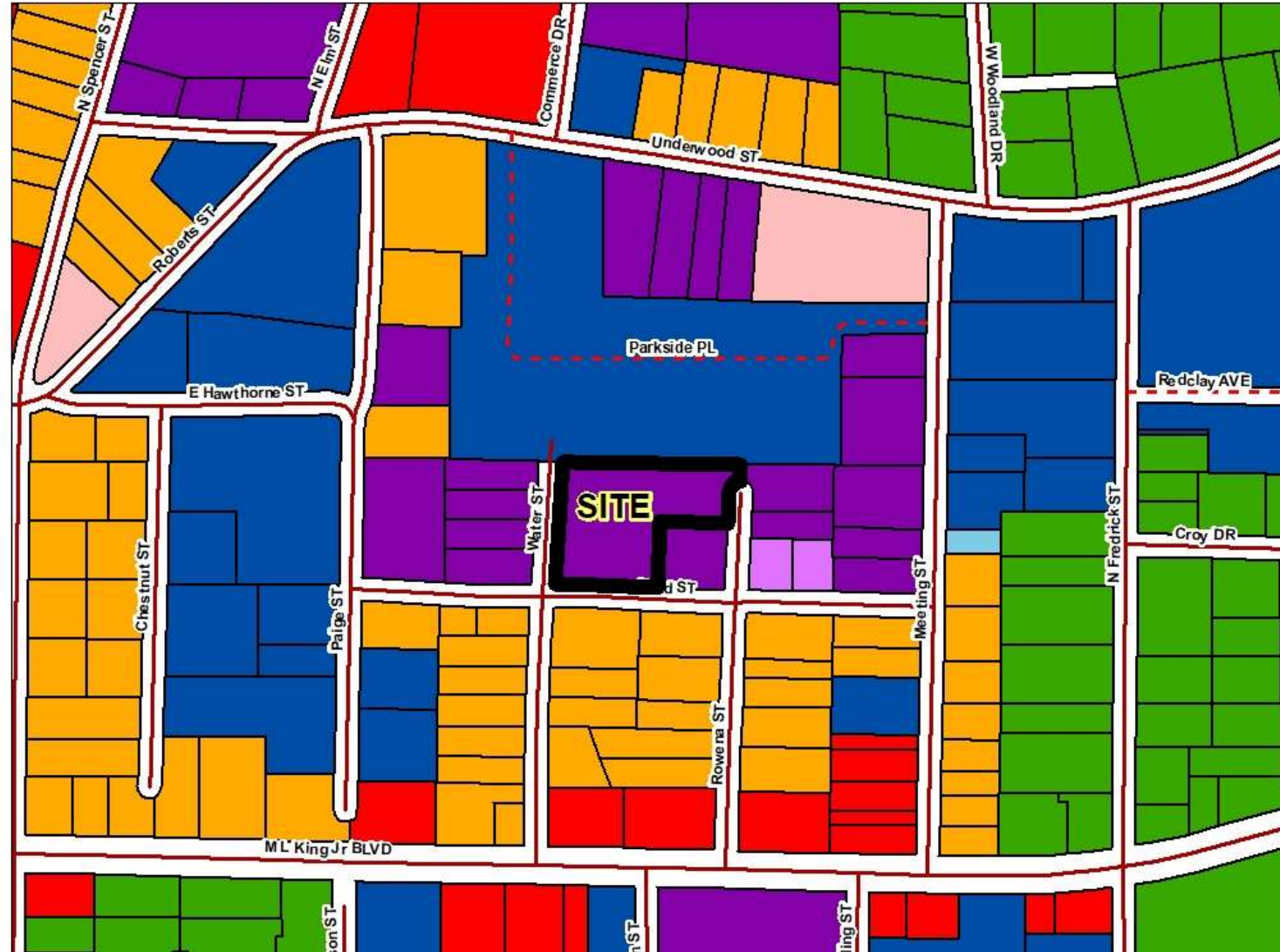


Figueroa Rezoning Request M-2, Heavy Manufacturing to R-5, Rural Residential CITY OF DALTON JURISDICTION

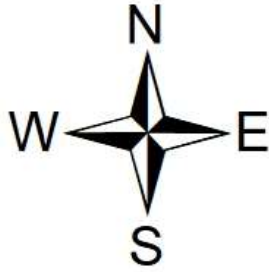


ZONING	
	Medium Density Single Family Residential (R-3)
	Rural Residential (R-5)
	Transitional Residential (R-6)
	High Density Residential (R-7)
	Limited Commercial (C-1A)
	Neighborhood Commercial (C-1)
	Neighborhood Commercial (C-1) Cond
	General Commercial (C-2)
	Heavy Manufacturing (M-2)

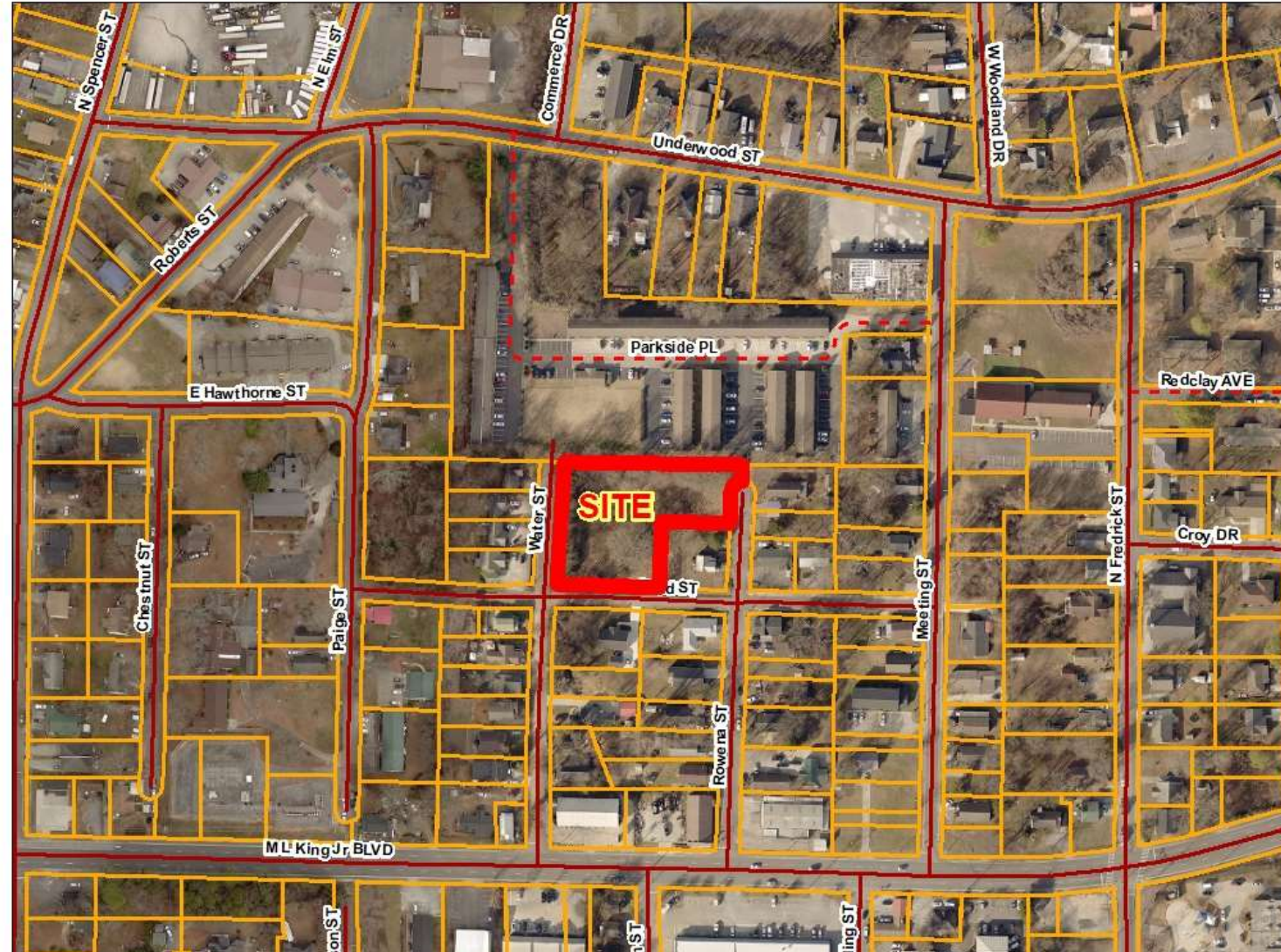
FEET
200

Figueroa Rezoning Request M-2, Heavy Manufacturing to R-5, Rural Residential CITY OF DALTON JURISDICTION



FEET
200

A solid black horizontal bar representing a scale of 200 feet.

**Figueroa Rezoning Request
M-2, Heavy Manufacturing
to
R-5, Rural Residential
CITY OF DALTON JURISDICTION**



**FEET
100**



Figueroa Rezoning Request M-2, Heavy Manufacturing to R-5, Rural Residential CITY OF DALTON JURISDICTION

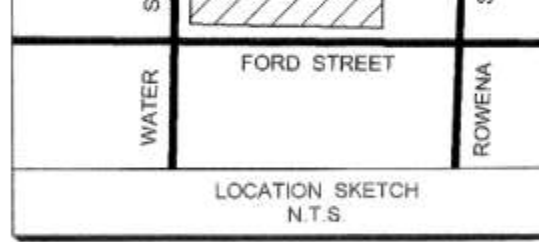


FUTURE DEVELOPMENT MAP

- Industrial
- Preserve
- Town Neighborhood Revitalization

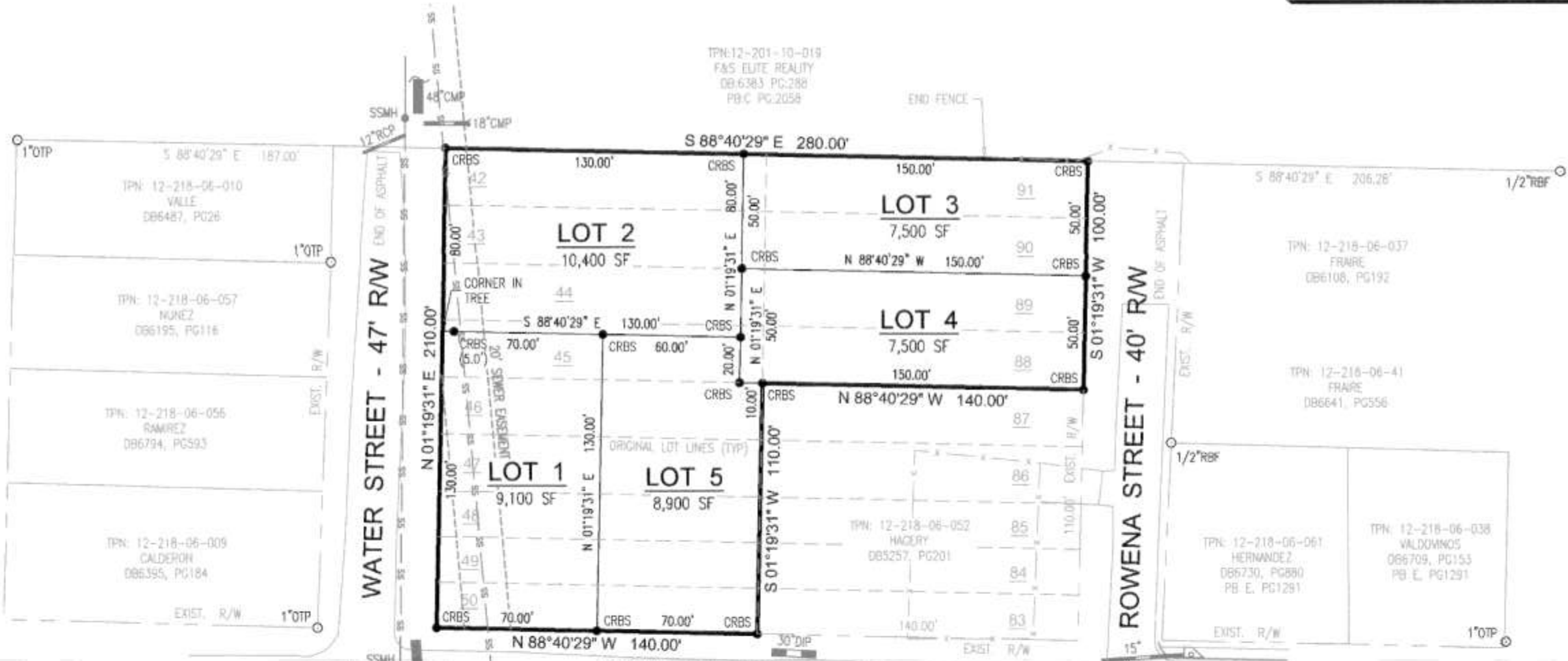
FEET
200





TPN:12-201-10-019
F&S ELITE REALTY
DB:6383 PG:288
P.B.C PG:2058

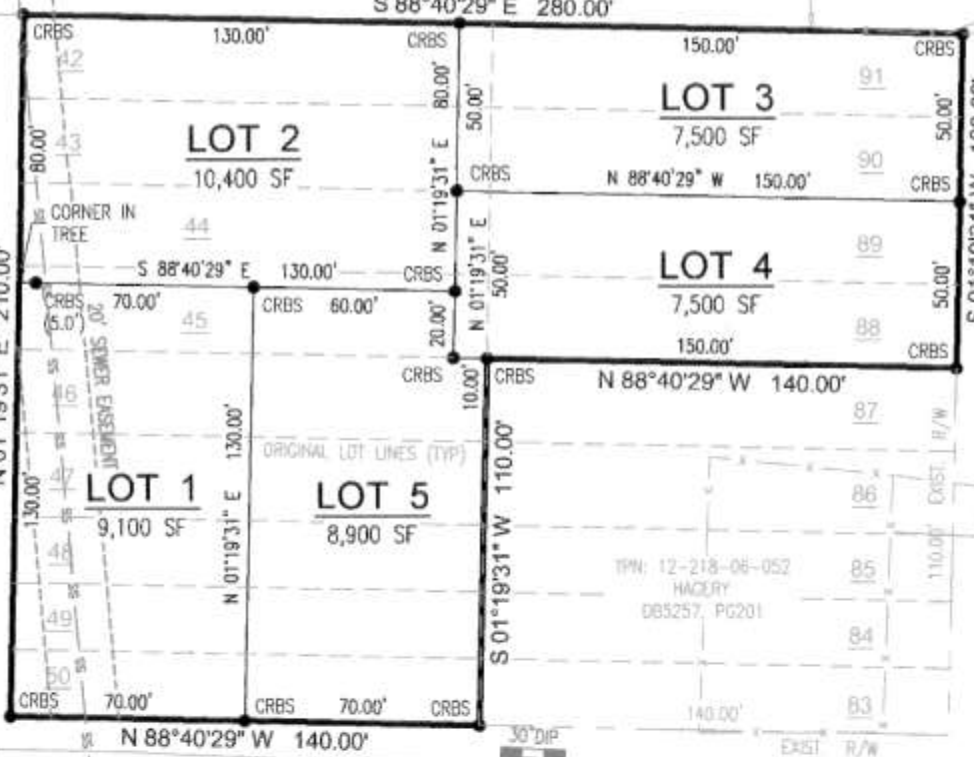
END FENCE



WATER STREET - 47' RW

FORD STREET - 40' RW

ROWENA STREET - 40' RW



LOT 2

LOT 3

LOT 4

LOT 1

LOT 5

TPN: 12-218-06-010
VALLE
DB6487, PG26

TPN: 12-218-06-057
MUNEZ
DB6195, PG116

TPN: 12-218-06-056
RAMIREZ
DB6794, PG593

TPN: 12-218-06-009
CALDERON
DB6355, PG184

TPN: 12-218-06-037
FRARE
DB6108, PG192

TPN: 12-218-06-41
FRARE
DB6641, PG356

TPN: 12-218-06-052
HACERY
DB5257, PG201

TPN: 12-218-06-061
HERNANDEZ
DB6730, PG880
PB E, PG1291

TPN: 12-218-06-038
VALDOMINOS
DB6709, PG153
PB E, PG1291

CRBF
"2393"