



Dalton Police Department Public Safety Commission Meeting

September 16, 2025

TABLE OF CONTENTS

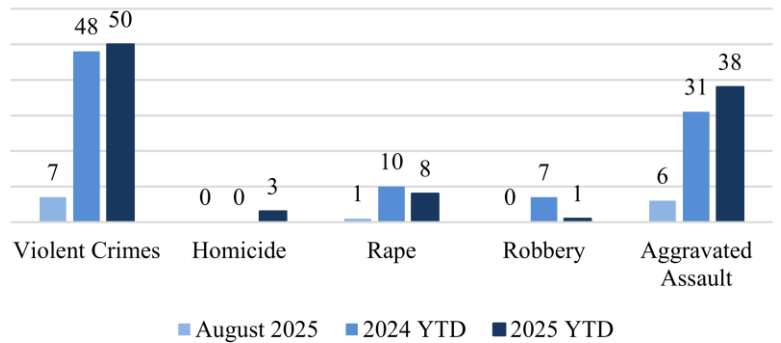
CRIME STATISTICS

CRASH STATISTICS

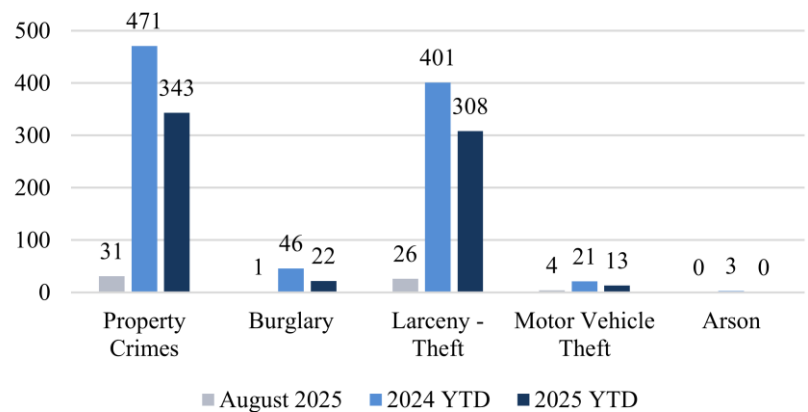
FINANCIAL STATISTICS

AUGUST 2025

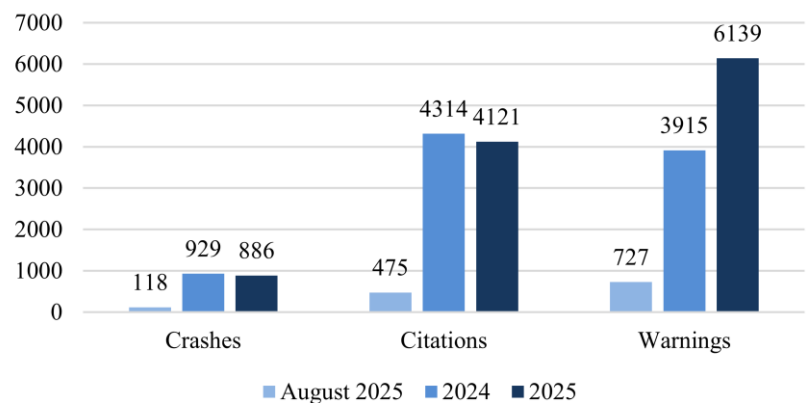
Violent Crimes



Property Crimes



Traffic





PART 1 CRIMES

August 2025

<u>Total Part 1 Crimes</u>			<u>2024 YTD</u>	<u>2025 YTD</u>	<u>YTD Change</u>
			511	391	-23.48%
<u>Violent Crimes</u>		<u>Current</u>	<u>2024 YTD</u>	<u>2025 YTD</u>	<u>YTD Change</u>
		7	42	51	21.43%
Homicide		0	0	3	Undefined
Rape		1	7	8	14.29%
Robbery		0	7	1	-85.71%
Aggravated Assault		6	28	39	39.29%
<u>Property Crimes</u>		<u>Current</u>	<u>2024 YTD</u>	<u>2025 YTD</u>	<u>YTD Change</u>
		31	469	340	-27.51%
Burglary		1	47	21	-55.32%
Larceny-Theft		26	398	306	-23.12%
Motor Vehicle Theft		4	21	13	-38.10%
Arson		0	3	0	-100.00%

There were 38 Part 1 crimes in August 2025. That is a decrease of approximately 33.3% compared to 57 in August 2024. Total Part 1 crimes YTD have decreased by approximately 23.48% when compared to 2024.

Violent crimes have increased by approximately 21.43% when compared to 2024. There have been 51 violent crimes YTD 2025 compared to 42 in 2024.

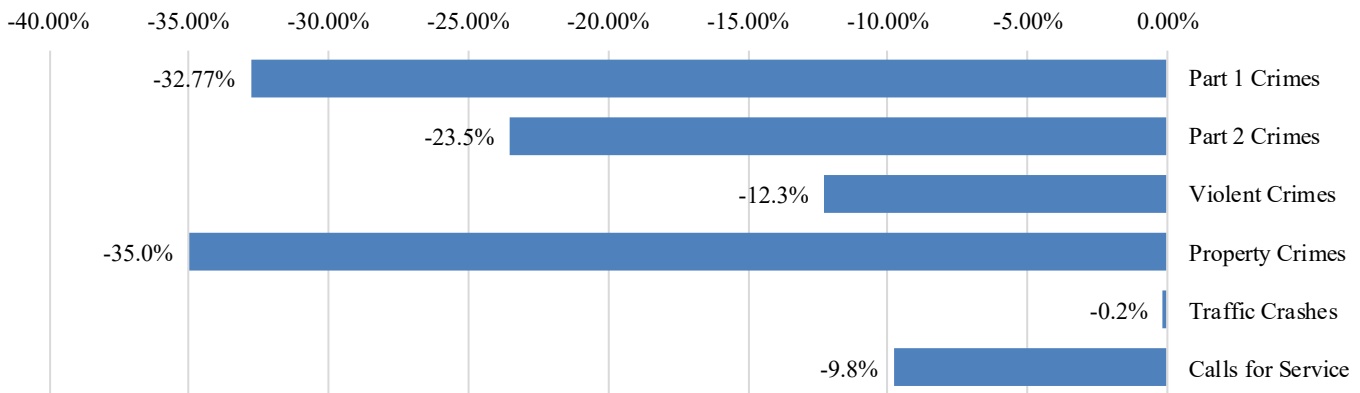
Property crimes have decreased by 27.51% when compared to 2024. All categories of property crimes have shown a decrease YTD compared to 2024.



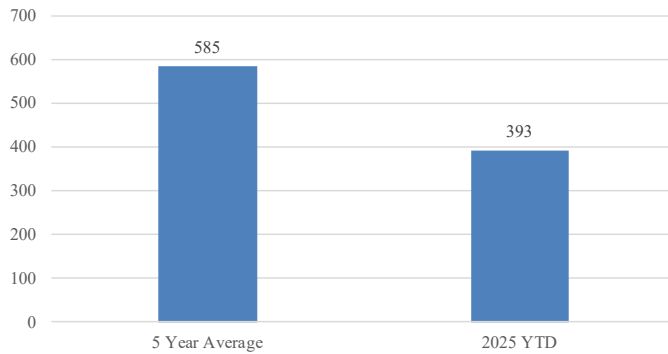
FIVE-YEAR AVERAGE

August 2025

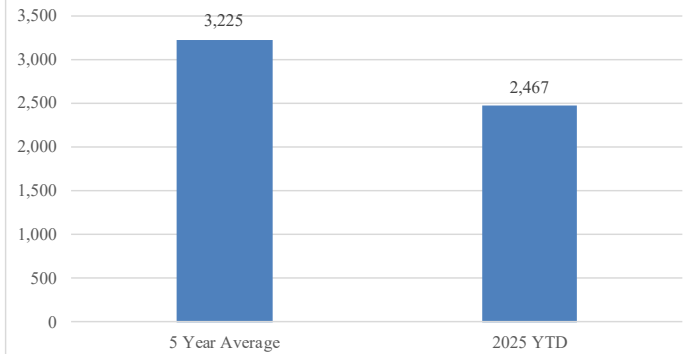
2025 YTD Compared to 5-Year Average



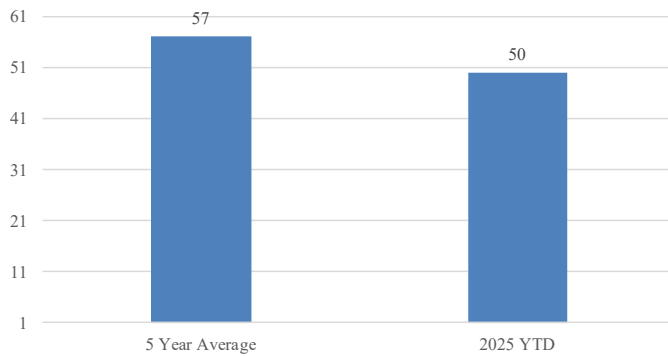
Part 1 Crimes



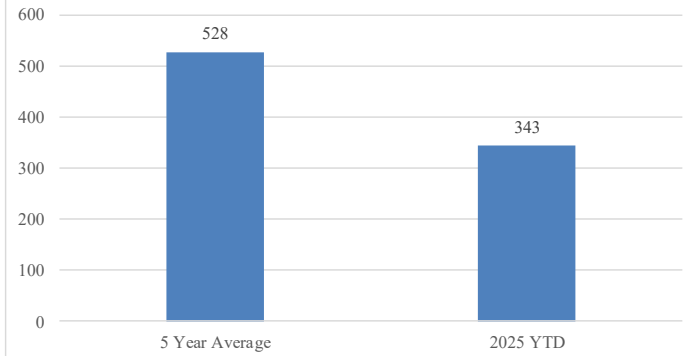
Part 2 Crimes



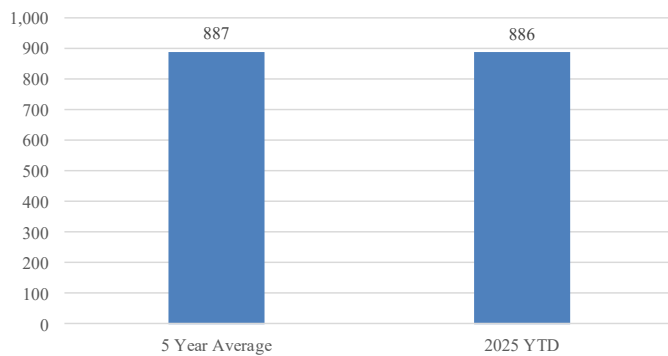
Violent Crimes



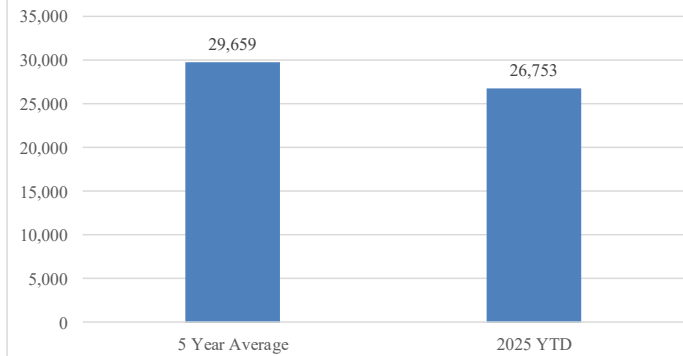
Property Crimes



Traffic Crashes



Calls For Service





CRASH STATISTICS

August 2025

Traffic crashes increased by approximately 8.3% when compared to July 2025. Year to date crashes have decreased by approximately 4.6%. Rear end collisions were the most frequent crash types. Failure to yield was the most frequent contributing factor. Walnut Ave had the highest number of crashes and injuries.

Total Crashes	Current	Previous	Change	YTD 2025	YTD 2024	Change	
	118	109	8.3%	886	929	-4.6%	
Injury Crashes	Total	Complaint	Minor	Serious	Fatality	Multiple	
	24	17	7	0	0	9	
Total Injuries	38						
DUI Crashes	Speed Crashes	Distracted Crashes		Following Too Closely Crashes			
1	4	18		24			
Day of the Week	Total				Time of Day	Total	
Monday	11				0000 - 0559	1	
Tuesday	19				0600 - 0859	13	
Wednesday	16				0900 - 1059	7	
Thursday	22				1100 - 1359	20	
Friday	22				1400 - 1559	32	
Saturday	19				1600 - 1859	30	
Sunday	9				1900 - 2159	10	
					2200 - 2359	5	
Collision Type	Total				Contributing Factors		Total
Rear End	50				Failed to Yield		27
Angle	43				Following too Closely		24
Sideswipe-Same Direction	12				Distracted		18
Collision with an Object	11				Improper Lane Change		11
Sideswipe-Opposite Direction	1						
Head On	1						
Top Streets	Total Crashes		% Total	Injuries		% Injuries	
Walnut Ave	24		20.3%	10		26.3%	
Chattanooga Rd	15		12.7%	9		23.7%	
Glenwood Ave	12		10.2%	8		21.1%	

	Traffic Stops	Warnings	Citations
August 2025	919	727	475
2025 YTD	8405	6139	4121
2024 YTD	7436	3915	4314