

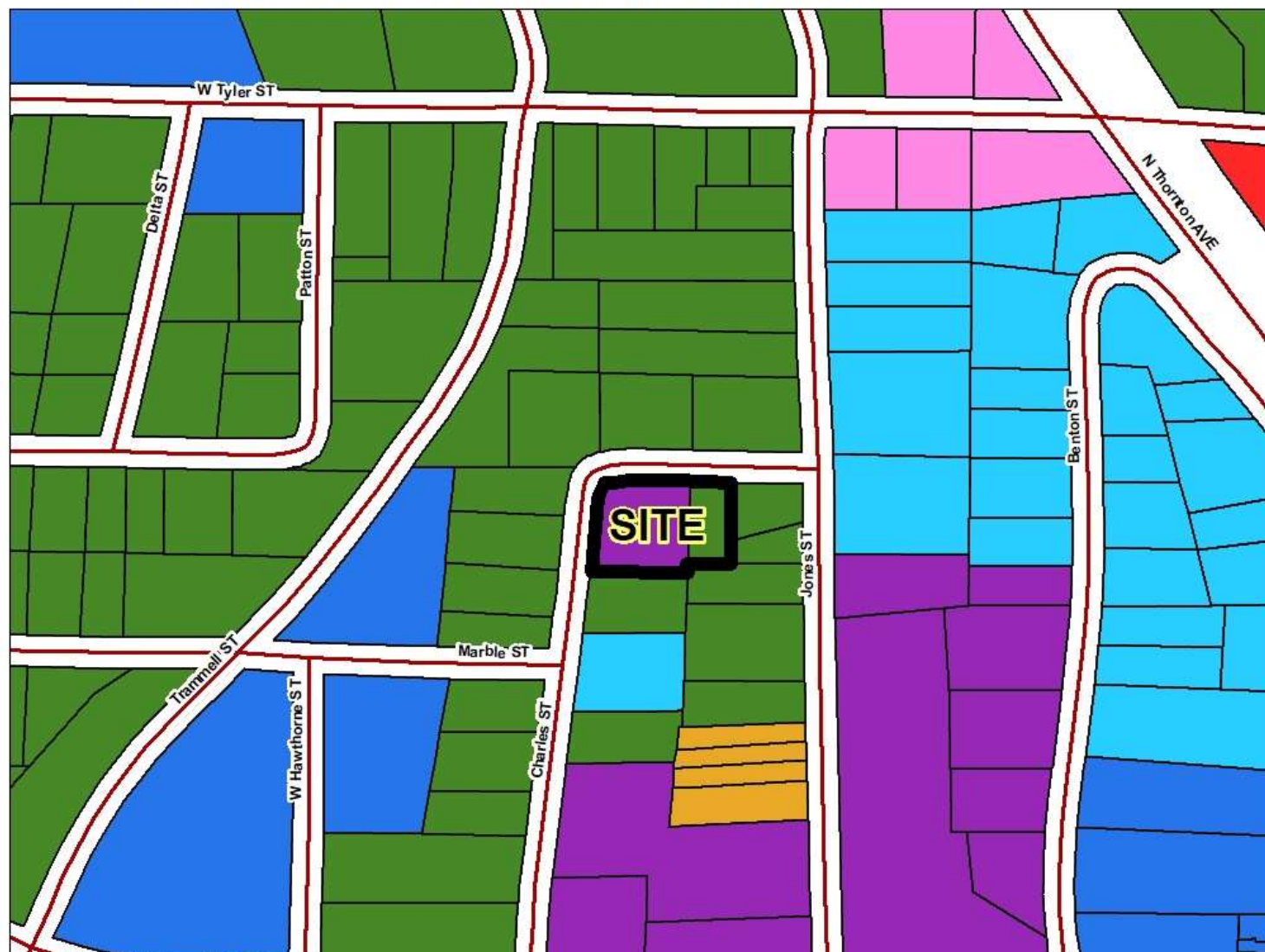
**Durkan Rezoning Request**  
**R-3, Medium Density Residential/M-2, Heavy Manufacturing**  
**to**  
**R-6, Transitional Residential**  
**CITY OF DALTON JURISDICTION**



**Unified Zoning**

-  Medium Density Single Family Residential (R-3)
-  Rural Residential (R-5)
-  Transitional Residential (R-6)
-  High Density Residential (R-7)
-  Neighborhood Commercial (C-1)
-  General Commercial (C-2)
-  Heavy Manufacturing (M-2)

**FEET**  
**200**



**View of subject property from Charles St.**





**View of the subject property from Charles St. near Marble St.**

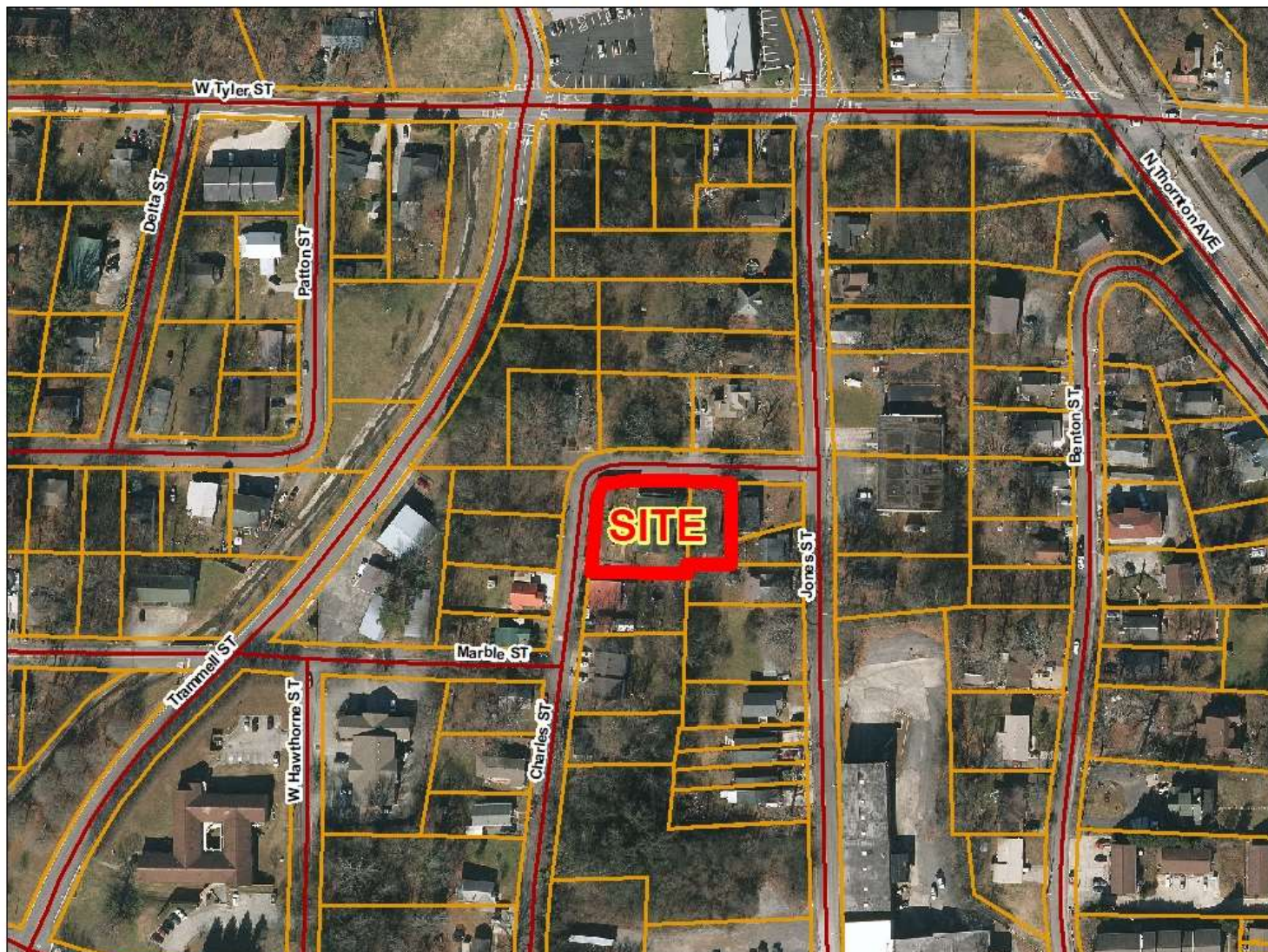




**Durkan Rezoning Request**  
**R-3, Medium Density Residential/M-2, Heavy Manufacturing**  
**to**  
**R-6, Transitional Residential**  
**CITY OF DALTON JURISDICTION**



**FEET**  
**200**

A solid black horizontal line representing a scale of 200 feet.



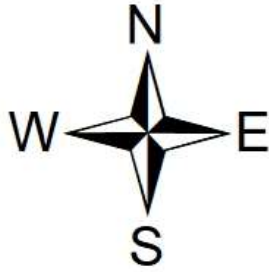
**Durkan Rezoning Request**  
**R-3, Medium Density Residential/M-2, Heavy Manufacturing**  
**to**  
**R-6, Transitional Residential**  
**CITY OF DALTON JURISDICTION**



**FEET**  
**100**



**Durkan Rezoning Request**  
**R-3, Medium Density Residential/M-2, Heavy Manufacturing**  
**to**  
**R-6, Transitional Residential**  
**CITY OF DALTON JURISDICTION**



**FUTURE DEVELOPMENT MAP**

-  Suburban Neighborhood
-  Town Neighborhood
-  Town Neighborhood Revitalization

**FEET**  
**200**

