



# Dalton Police Department Public Safety Commission Meeting

December 16, 2025

## TABLE OF CONTENTS

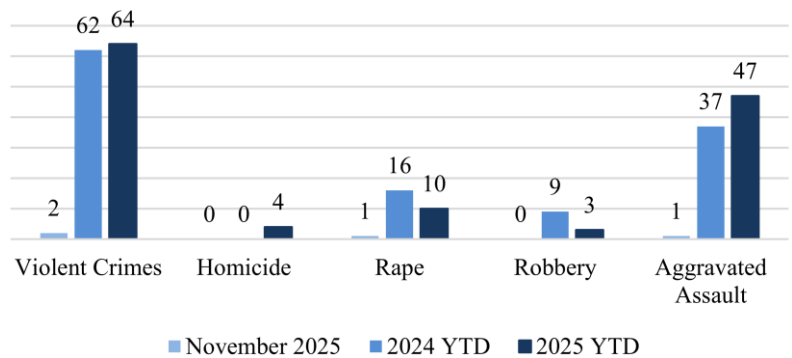
### CRIME STATISTICS

### CRASH STATISTICS

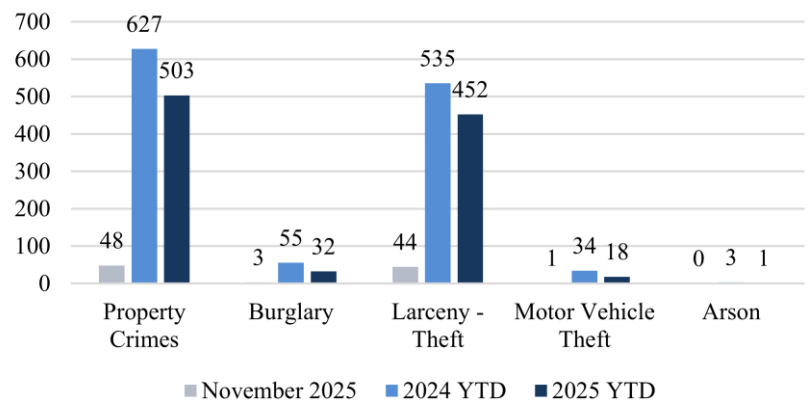
### FINANCIAL STATISTICS

## NOVEMBER 2025

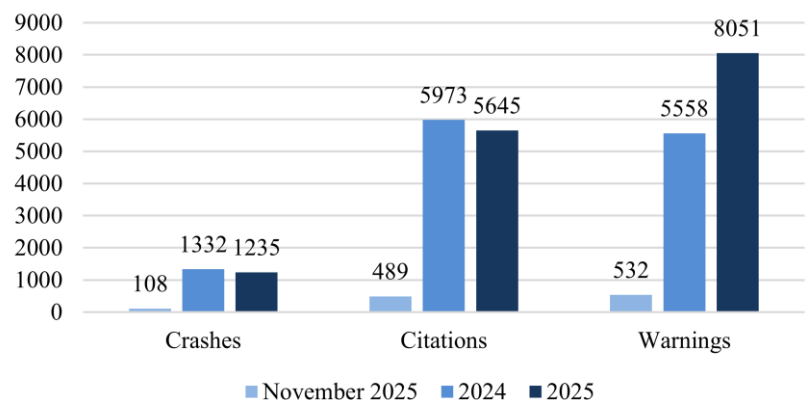
### Violent Crimes



### Property Crimes



### Traffic





# PART 1 CRIMES

## November 2025

<u>Total Part 1 Crimes</u>			<u>2024 YTD</u>	<u>2025 YTD</u>	<u>YTD Change</u>
			689	567	-17.71%
<u>Violent Crimes</u>		<u>Current</u>	<u>2024 YTD</u>	<u>2025 YTD</u>	<u>YTD Change</u>
		2	62	64	3.23%
Homicide		0	0	4	Undefined
Rape		1	16	10	-37.50%
Robbery		0	9	3	-66.67%
Aggravated Assault		1	37	47	27.03%
<u>Property Crimes</u>		<u>Current</u>	<u>2024 YTD</u>	<u>2025 YTD</u>	<u>YTD Change</u>
		48	627	503	-19.78%
Burglary		3	55	32	-41.82%
Larceny-Theft		44	535	452	-15.51%
Motor Vehicle Theft		1	34	18	-47.06%
Arson		0	3	1	-66.67%

There were 50 Part 1 crimes in November 2025. That is an increase of approximately 13.6% compared to 44 in November 2024. Total Part 1 crimes YTD have decreased by approximately 17.7% when compared to 2024. Total Part 1 crimes for 2025 are approximately 30.3% lower than the 5-year average.

Violent crimes have increased by approximately 3.3% when compared to 2024. There have been 64 violent crimes YTD 2025 compared to 62 violent crimes in 2024. Homicides and aggravated assaults have increased since last year. The 5-year average for violent crimes is 80.2 crimes. Current violent crime number are higher than 2024, but are approximately 20.2% lower than the 5-year average.

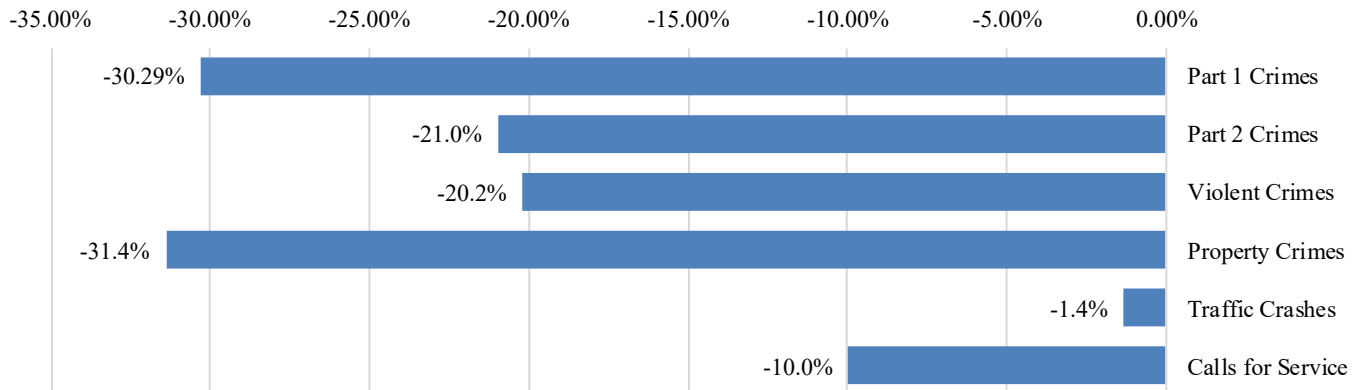
Property crimes have decreased by 19.8% when compared to 2024. All categories of property crimes have shown a decrease YTD compared to 2024. Current property crime numbers are approximately 31.4% lower than the 5-year average.



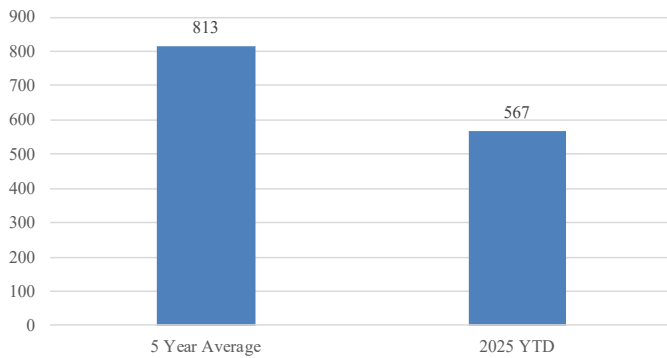
# FIVE-YEAR AVERAGE

## November 2025

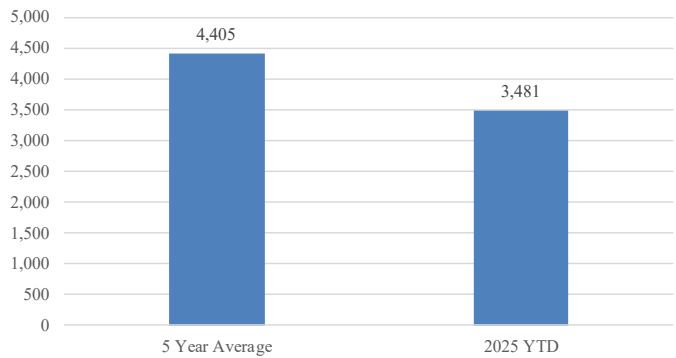
2025 YTD Compared to 5-Year Average



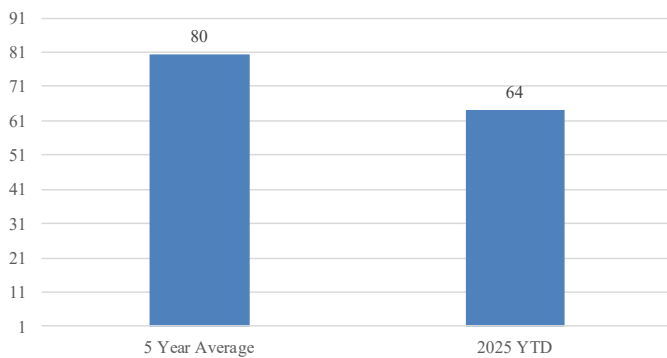
Part 1 Crimes



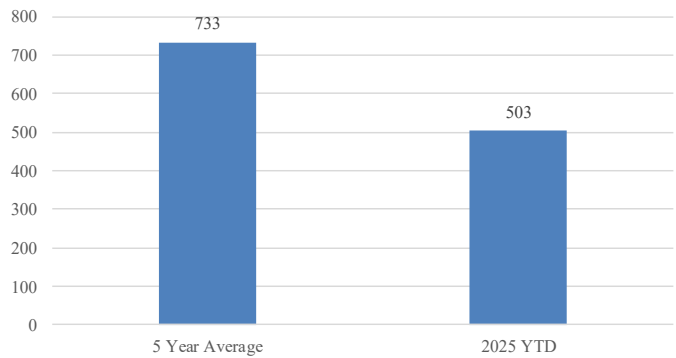
Part 2 Crimes



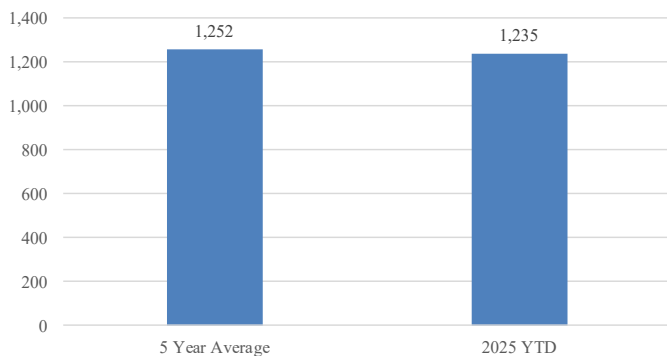
Violent Crimes



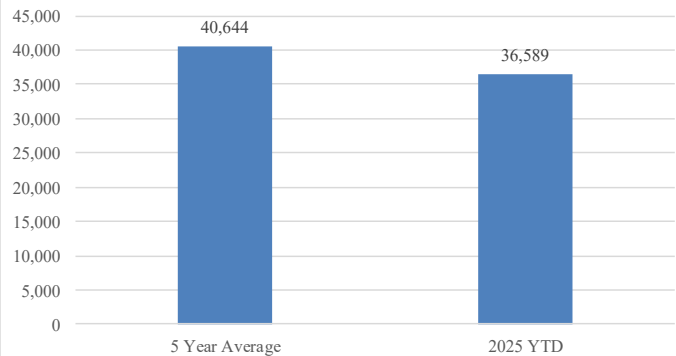
Property Crimes



Traffic Crashes



Calls For Service





# CRASH STATISTICS

## November 2025

Traffic crashes decreased by approximately 20% when compared to October 2025. Year to date crashes have decreased by approximately 7.3%. Angle collisions were the most frequent crash types. Following too closely was the most frequent contributing factor. Chattanooga Rd had the highest number of crashes and injuries during November.

Total Crashes	Current Week	Previous	Change	YTD 2025	YTD 2024	Change
	108	135	-20.0%	1235	1332	-7.3%
Injury Crashes	Total	Complaint	Minor	Serious	Fatality	Multiple
	22	18	4	0	0	6
Total Injuries	31					
DUI Crashes	Speed Crashes	Distracted Crashes		Following Too Closely Crashes		
2	3	9		25		
Day of the Week	Total				Time of Day	Total
Monday	14				0000 - 0559	3
Tuesday	15				0600 - 0859	18
Wednesday	11				0900 - 1059	8
Thursday	16				1100 - 1359	21
Friday	27				1400 - 1559	13
Saturday	15				1600 - 1859	24
Sunday	10				1900 - 2159	20
					2200 - 2359	1
Collision Type	Total				Contributing Factors	
Angle	45				Total	
Rear End	42				Following too Closely	25
Collision with an Object	13				Failure to Yield	23
Sideswipe-Same Direction	6				Stop Sign/Signal Violation	9
Head On	2				Distracted	9
Top Streets	Total Crashes		% Total	Injuries		% Injuries
Chattanooga Rd	21		19.4%	9		29.0%
Walnut Ave	19		17.6%	6		19.4%
Glenwood Ave	8		7.4%	1		3.2%

	Traffic Stops	Warnings	Citations
November 2025	892	532	489
2025 YTD	11176	8051	5645
2024 YTD	10167	5558	5973