

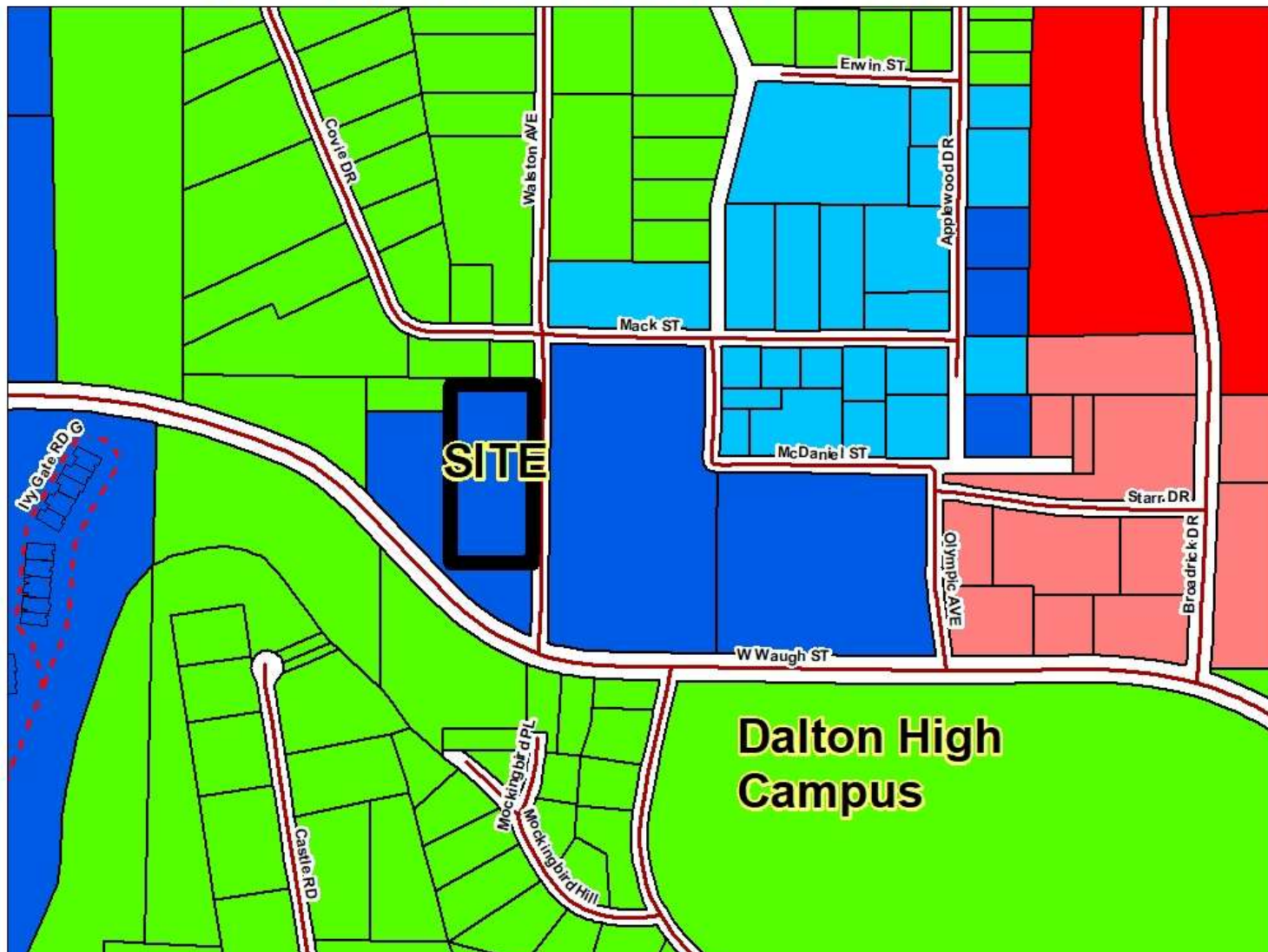
Armstrong Rezoning Request
R-7, High Density Residential COND
to
R-5, Rural Residential
CITY OF DALTON JURISDICTION



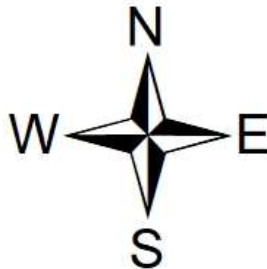
ZONING

-  Low Density Single Family Residential (R-2)
-  Transitional Residential (R-6)
-  High Density Residential (R-7)
-  High Density Residential (R-7) Cond
-  Neighborhood Commercial (C-1)
-  General Commercial (C-2)


FEET
425



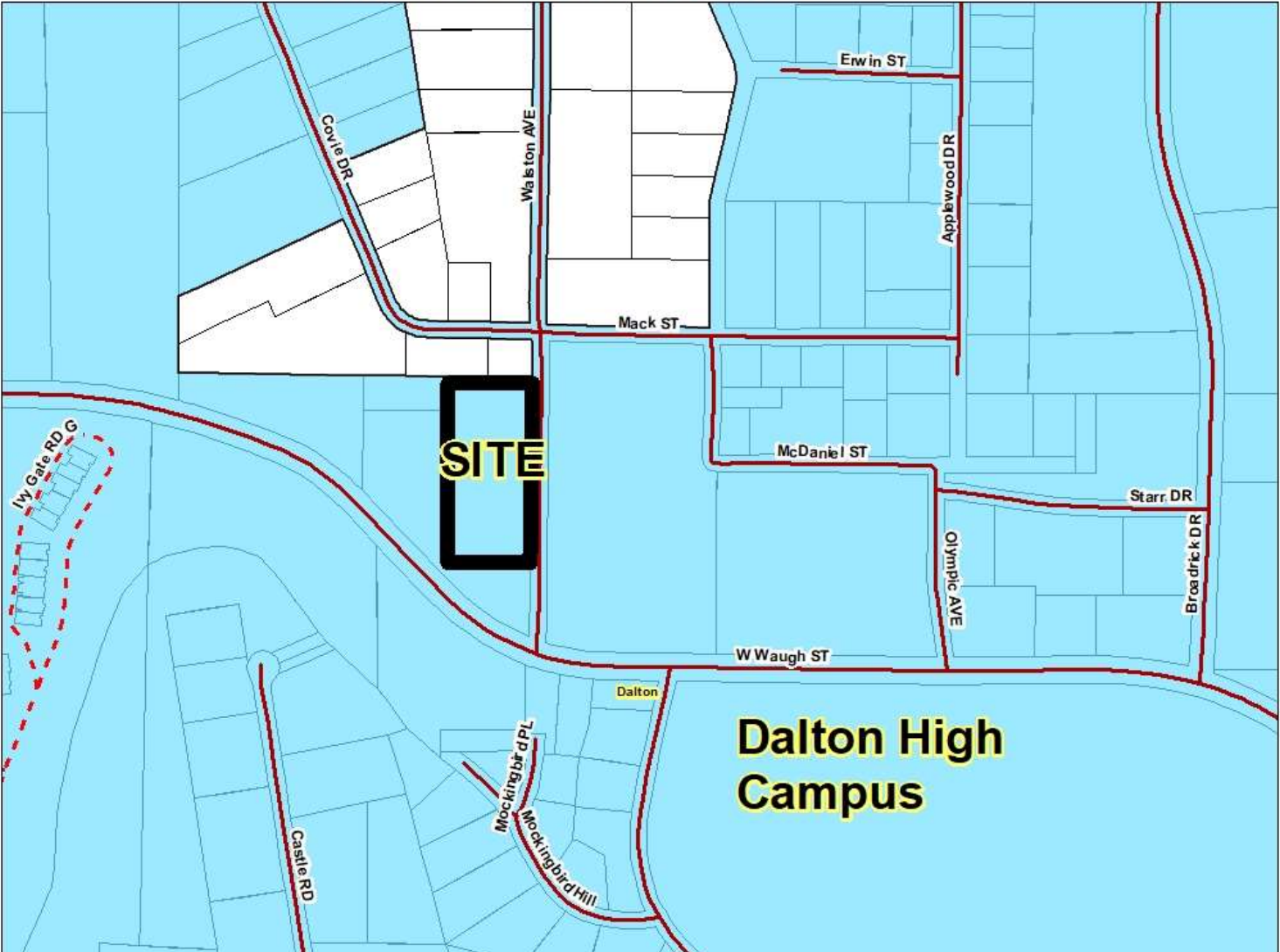
**Armstrong Rezoning Request
R-7, High Density Residential COND
to
R-5, Rural Residential
CITY OF DALTON JURISDICTION**



DALTON CITY LIMITS

 Town_Boundaries

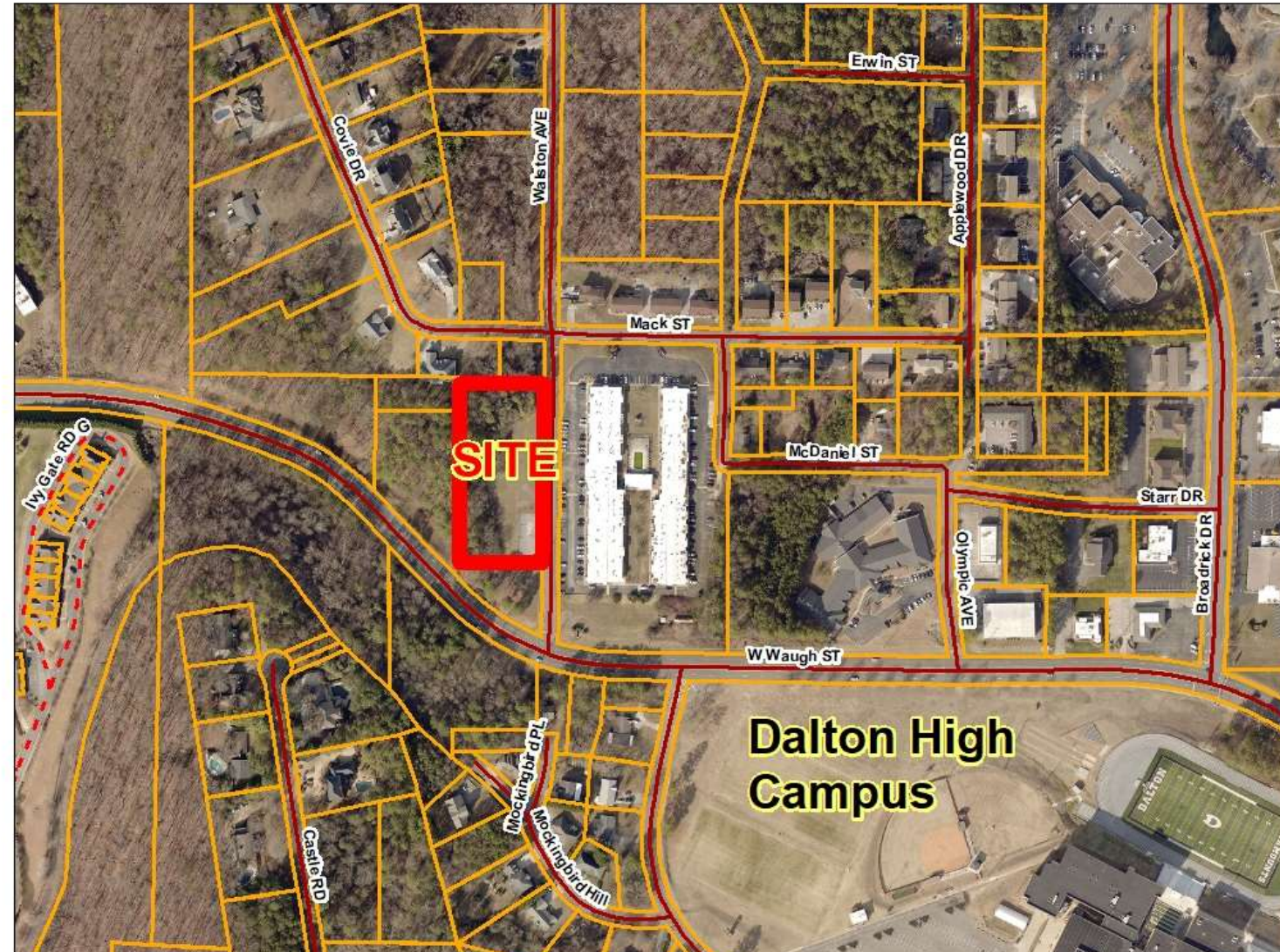
**FEET
425**





**Armstrong Rezoning Request
R-7, High Density Residential COND
to
R-5, Rural Residential
CITY OF DALTON JURISDICTION**

**FEET
425**



**Armstrong Rezoning Request
R-7, High Density Residential COND
to
R-5, Rural Residential
CITY OF DALTON JURISDICTION**



FUTURE DEVELOPMENT MAP

-  Medical District
-  Preserve
-  Regional Activity Center
-  Suburban Neighborhood

**FEET
425**

