



Dalton Police Department Public Safety Commission Meeting

September 24, 2024

TABLE OF CONTENTS

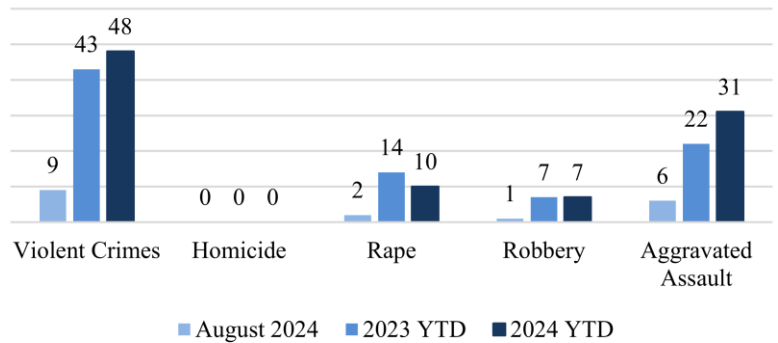
CRIME STATISTICS

CRASH STATISTICS

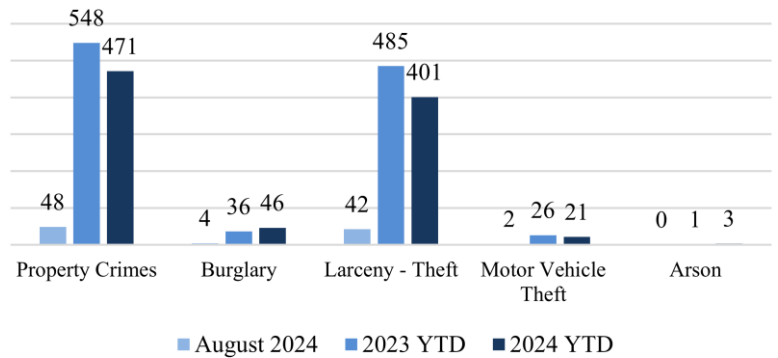
FINANCIAL STATISTICS

AUGUST 2024

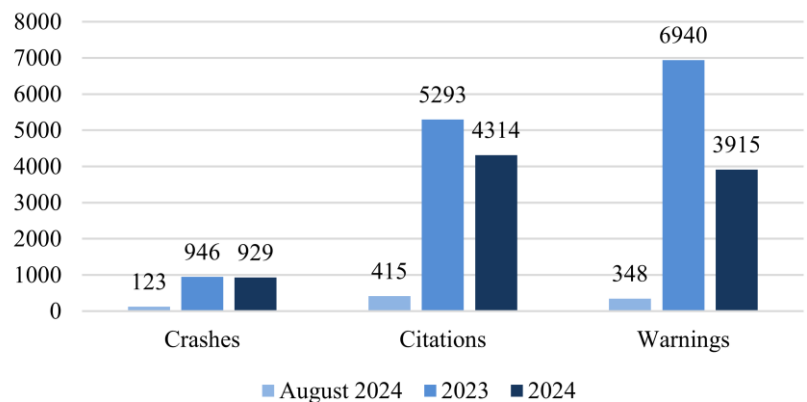
Violent Crimes



Property Crimes



Traffic





PART 1 CRIMES

August 2024

<u>Total Part 1 Crimes</u>			<u>2023 YTD</u>	<u>2024 YTD</u>	<u>YTD Change</u>
			591	519	-12.18%
<u>Violent Crimes</u>		<u>Current</u>	<u>2023 YTD</u>	<u>2024 YTD</u>	<u>YTD Change</u>
		9	43	48	11.63%
Homicide		0	0	0	0.00%
Rape		2	14	10	-28.57%
Robbery		1	7	7	0.00%
Aggravated Assault		6	22	31	40.91%
<u>Property Crimes</u>		<u>Current</u>	<u>2023 YTD</u>	<u>2024 YTD</u>	<u>YTD Change</u>
		48	548	471	-14.05%
Burglary		4	36	46	27.78%
Larceny-Theft		42	485	401	-17.32%
Motor Vehicle Theft		2	26	21	-19.23%
Arson		0	1	3	200.00%

There were 57 Part 1 crimes in August 2024. That is decrease of approximately 25% compared to 76 in August 2023. Total Part 1 crimes YTD have decreased by approximately 12.18% when compared to 2023.

Violent crimes have increased by approximately 11.63% when compared to 2023. There have been 48 violent crimes YTD compared to 43 in 2023.

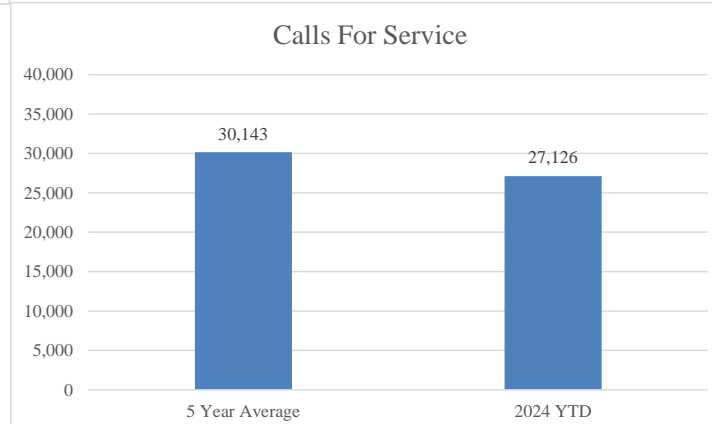
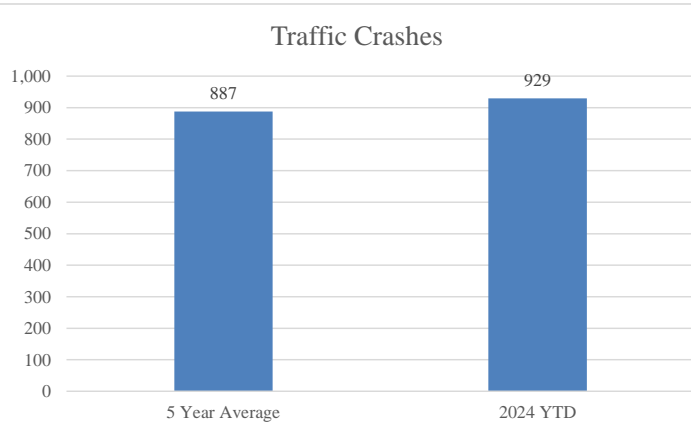
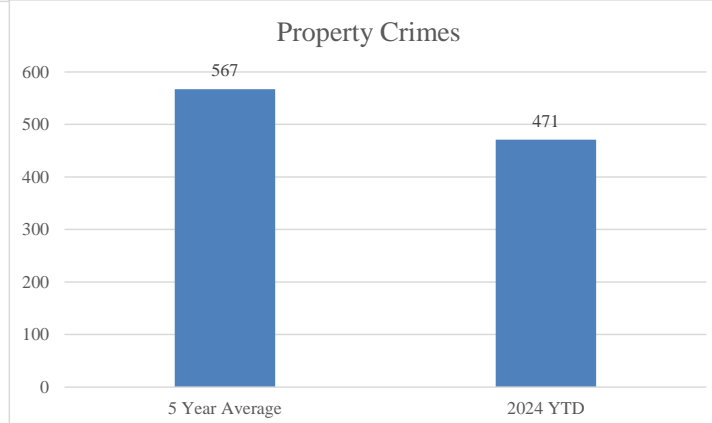
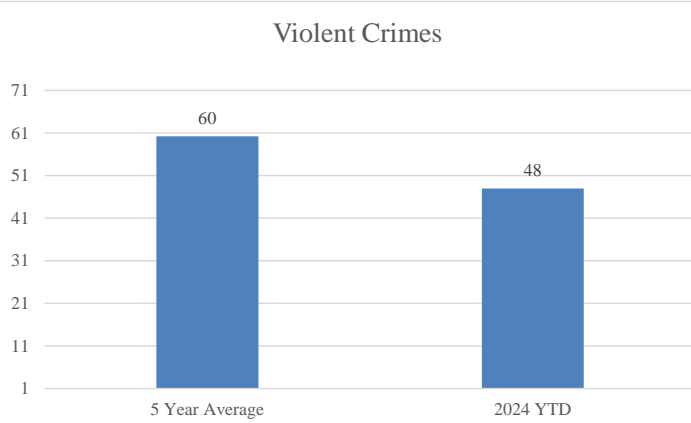
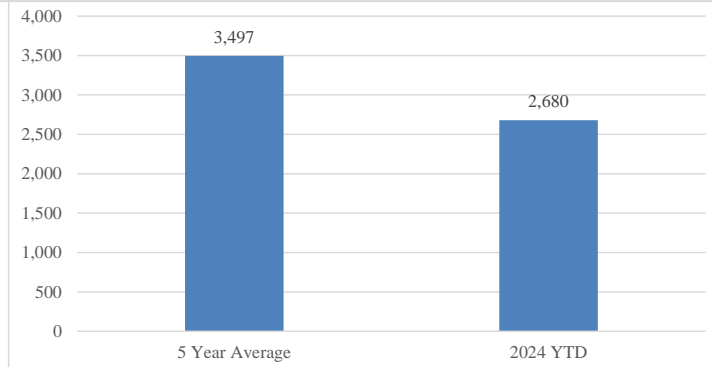
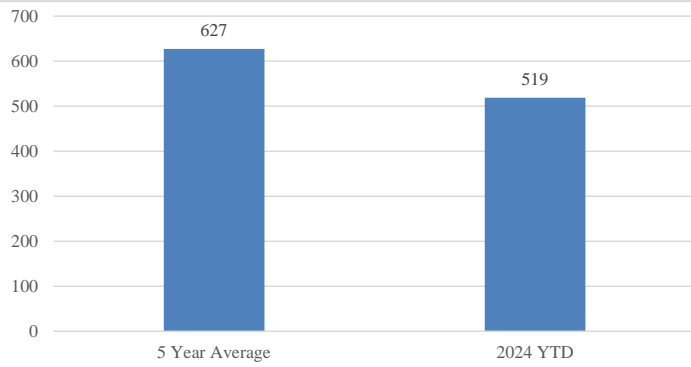
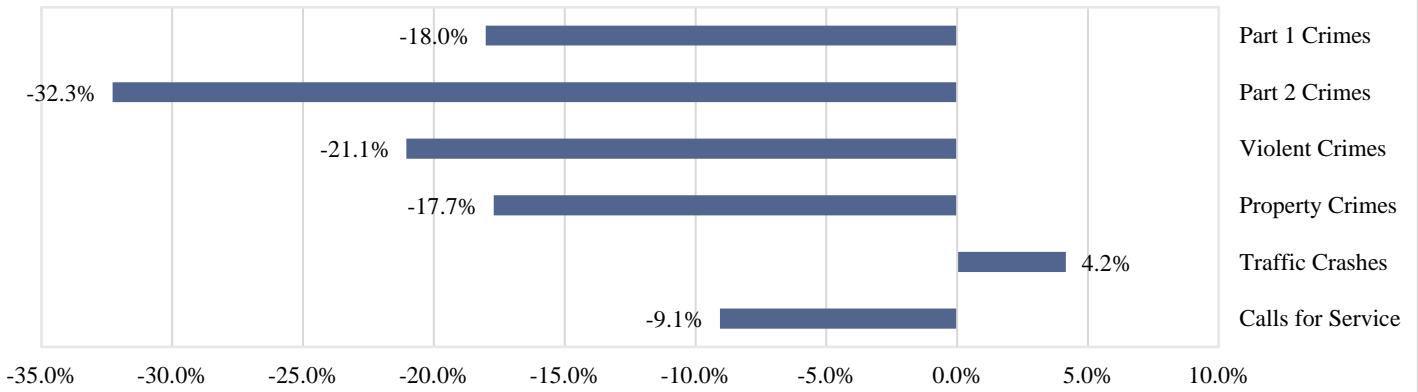
Property crimes have decreased by 14.05% when compared to 2023. Burglaries have increased significantly YTD compared to 2023 numbers.



FIVE-YEAR AVERAGE

August 2024

2024 YTD Compared to 5-Year Average





CRASH STATISTICS

August 2024

Traffic crashes increased by approximately 10.8% when compared to July 2024. Year to date crashes have decreased by approximately 1.8%. Angle and rear end collisions were the most frequent crash types. Failure to yield was the most frequent contributing factor. Walnut Ave had the highest number of crashes and injuries.

Total Crashes	Current	Previous	Change	YTD 2024	YTD 2023	Change	
	123	111	10.8%	929	946	-1.8%	
Injury Crashes	Total	Complaint	Minor	Serious	Fatality	Multiple	
	27	15	10	2	0	9	
Total Injuries	33						
DUI Crashes	Speed Crashes	Distracted Crashes		Following Too Closely Crashes			
7	4	9		25			
Day of the Week	Total	Time of Day					Total
Monday	14	0000 - 0559					4
Tuesday	17	0600 - 0859					9
Wednesday	18	0900 - 1059					13
Thursday	24	1100 - 1359					26
Friday	25	1400 - 1559					18
Saturday	14	1600 - 1859					29
Sunday	11	1900 - 2159					19
		2200 - 2359					5
Collision Type	Total	Contributing Factors					Total
Angle	52	Failure to Yield					29
Rear End	40	Following too Closely					25
Sideswipe-Same Direction	15	Improper Lane Change					16
Collision with an Object	14	Stop Sign / Signal Violation					14
Sideswipe-Opposite Direction	2						
Top Streets	Total Crashes	% Total	Injuries	% Injuries			
Walnut Ave	29	23.6%	9	27.3%			
Chattanooga Rd	8	6.5%	2	6.1%			
Glenwood Ave	8	6.5%	4	12.1%			

	Traffic Stops	Warnings	Citations
August 2024	1000	553	629
2024 YTD	7448	3915	4314
2023 YTD	10208	6940	6940