



# Dalton Police Department Public Safety Commission Meeting

August 19, 2025

## TABLE OF CONTENTS

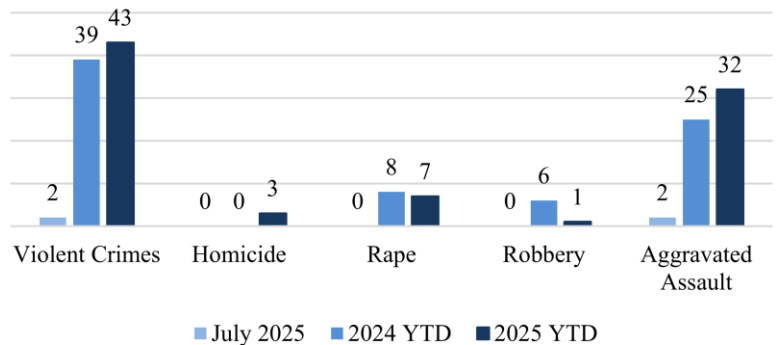
### CRIME STATISTICS

### CRASH STATISTICS

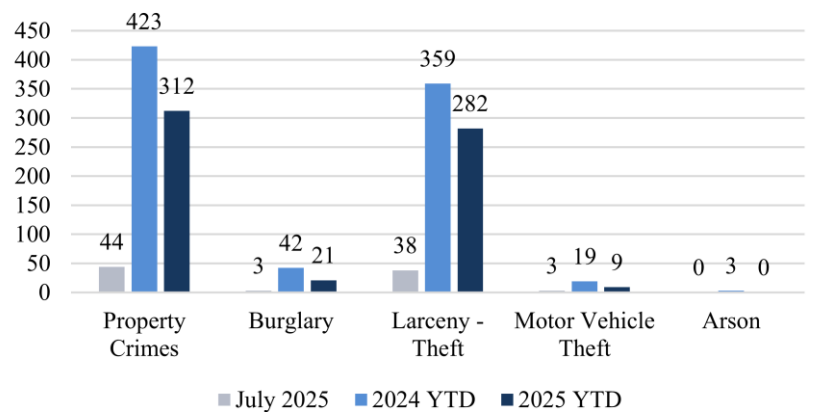
### FINANCIAL STATISTICS

## JULY 2025

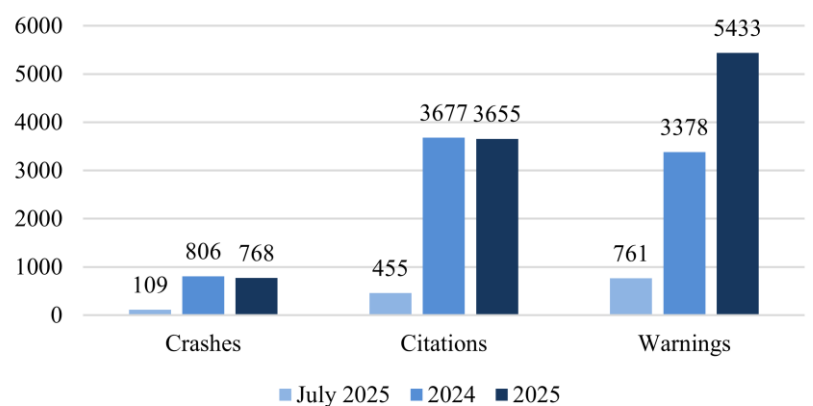
### Violent Crimes



### Property Crimes



### Traffic





# PART 1 CRIMES

## July 2025

<b>Total Part 1 Crimes</b>			<u>2024 YTD</u>	<u>2025 YTD</u>	<u>YTD Change</u>
			462	355	-23.16%
<b>Violent Crimes</b>		<u>Current</u>	<u>2024 YTD</u>	<u>2025 YTD</u>	<u>YTD Change</u>
		2	39	43	10.26%
Homicide		0	0	3	Undefined
Rape		0	8	7	-12.50%
Robbery		0	6	1	-83.33%
Aggravated Assault		2	25	32	28.00%
<b>Property Crimes</b>		<u>Current</u>	<u>2024 YTD</u>	<u>2025 YTD</u>	<u>YTD Change</u>
		44	423	312	-26.24%
Burglary		3	42	21	-50.00%
Larceny-Theft		38	359	282	-21.45%
Motor Vehicle Theft		3	19	9	-52.63%
Arson		0	3	0	-100.00%

There were 46 Part 1 crimes in July 2025. That is a decrease of approximately 69.6% compared to 78 in July 2024. Total Part 1 crimes YTD have decreased by approximately 23.31% when compared to 2024.

Violent crimes have increased by approximately 10.26% when compared to 2024. There have been 43 violent crimes YTD 2025 compared to 39 in 2024.

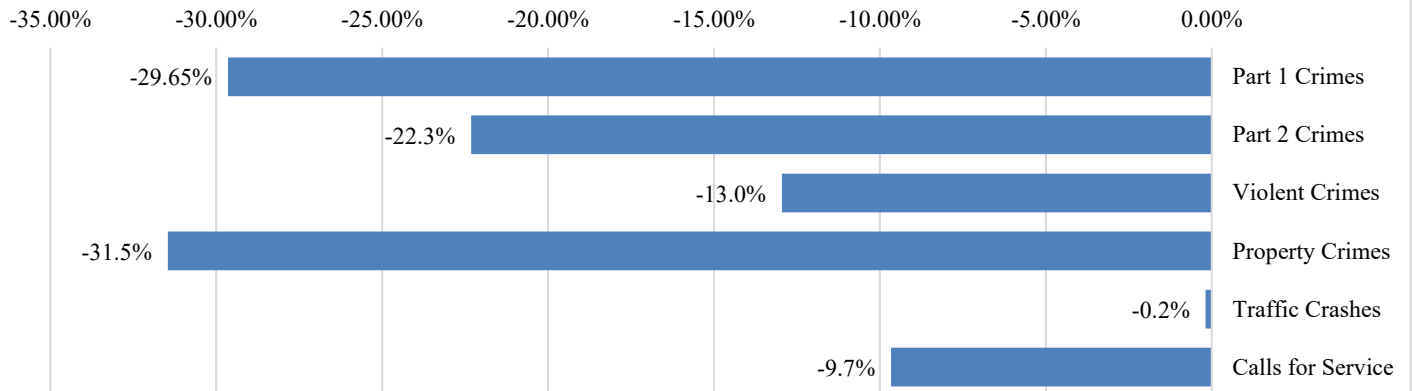
Property crimes have decreased by 26.24% when compared to 2024. All categories of property crimes have shown a decrease YTD compared to 2024.



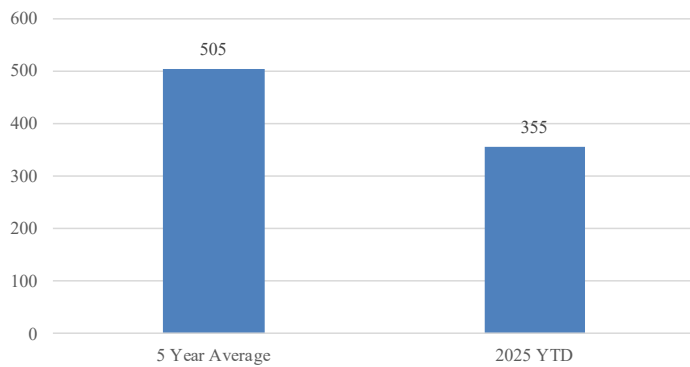
# FIVE-YEAR AVERAGE

## July 2025

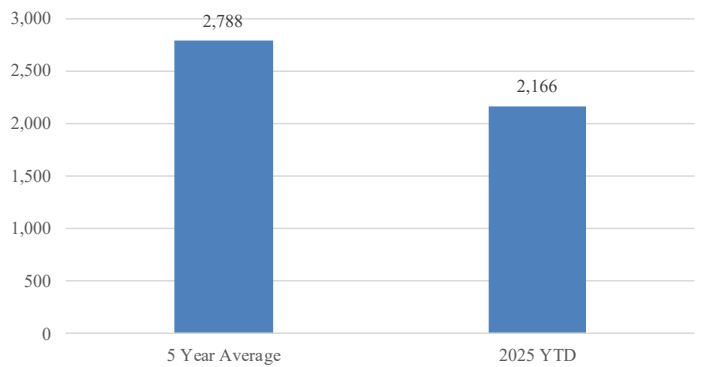
2025 YTD Compared to 5-Year Average



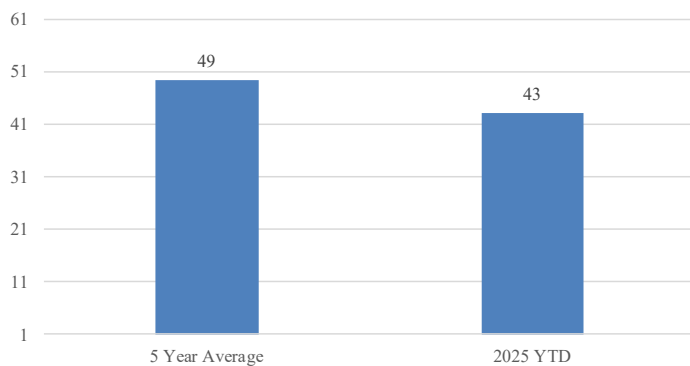
Part 1 Crimes



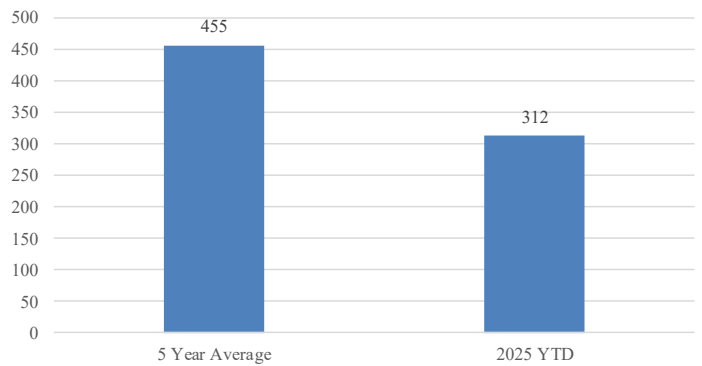
Part 2 Crimes



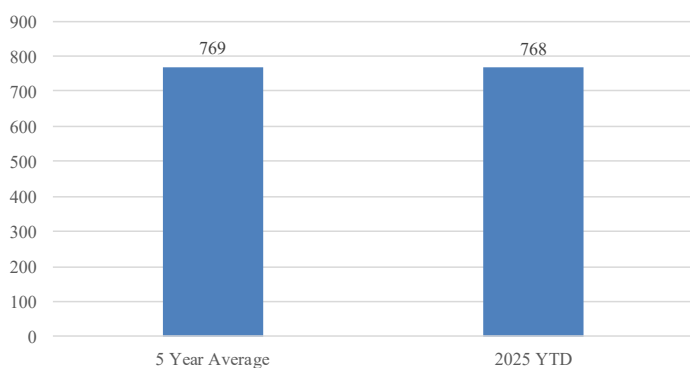
Violent Crimes



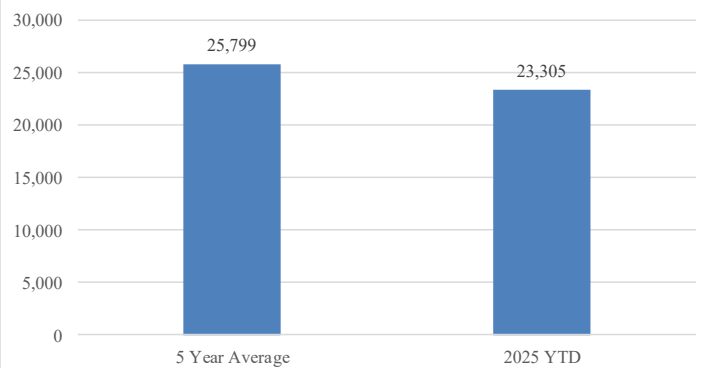
Property Crimes



Traffic Crashes



Calls For Service





# CRASH STATISTICS

## July 2025

Traffic crashes decreased approximately .9% when compared to June 2025. Year to date crashes have decreased by approximately 4.7%. Rear end collisions were the most frequent crash types. Following too closely was the most frequent contributing factor. Walnut Ave had the highest number of crashes and injuries.

Total Crashes	Current	Previous	Change	YTD 2025	YTD 2024	Change	
	109	110	-0.9%	768	806	-4.7%	
Injury Crashes	Total	Complaint	Minor	Serious	Fatality	Multiple	
	28	18	8	2	0	5	
Total Injuries	35						
DUI Crashes	Speed Crashes	Distracted Crashes		Following Too Closely Crashes			
3	5	17		19			
Day of the Week	Total					Time of Day	Total
Monday	16					0000 - 0559	4
Tuesday	18					0600 - 0859	7
Wednesday	18					0900 - 1059	10
Thursday	27					1100 - 1359	16
Friday	12					1400 - 1559	21
Saturday	6					1600 - 1859	28
Sunday	12					1900 - 2159	15
						2200 - 2359	8
Collision Type	Total					Contributing Factors	Total
Rear End	41					Following too Closely	19
Angle	33					Distracted	17
Sideswipe-Same Direction	18					Improper Lane Change	13
Collision with an Object	14					Failed to Yield	12
Sideswipe-Opposite Direction	2						
Head On	1						
Top Streets	Total Crashes		% Total	Injuries		% Injuries	
Walnut Ave	23		21.1%	5		14.3%	
Chattanooga Rd	14		12.8%	1		2.9%	
Glenwood Ave	7		6.4%	3		8.6%	

	Traffic Stops	Warnings	Citations
July 2025	959	761	455
2025 YTD	7486	5433	3655
2024 YTD	6436	3378	3677



# **FINANCIAL STATISTICS**

## **July 2025**

### **SUMMARY OF THE FINANCIAL STATUS THROUGH JULY 2025**

The police department budget for FY 2025 is now in its implementation, and we have expended approximately 52.4% of our 2025 budget through July. Currently, we believe there will be sufficient funds to accomplish our 2025 goals and meet the needs of the department.