



# CONASAUGA COMMUNITY

ADDICTION RECOVERY CENTER

*Guiding Your Journey to Lasting Recovery*



## ABOUT US

Conasauga Community Addiction Recovery Center offers high-quality recovery services at **no cost** for anyone in Whitfield and Murray County whose lives have been impacted by addiction directly, or indirectly.

We aim to inspire hope by contributing to the health and well-being of the communities we serve through addiction treatment for anyone who wants to receive care.

# TREATMENT SERVICES

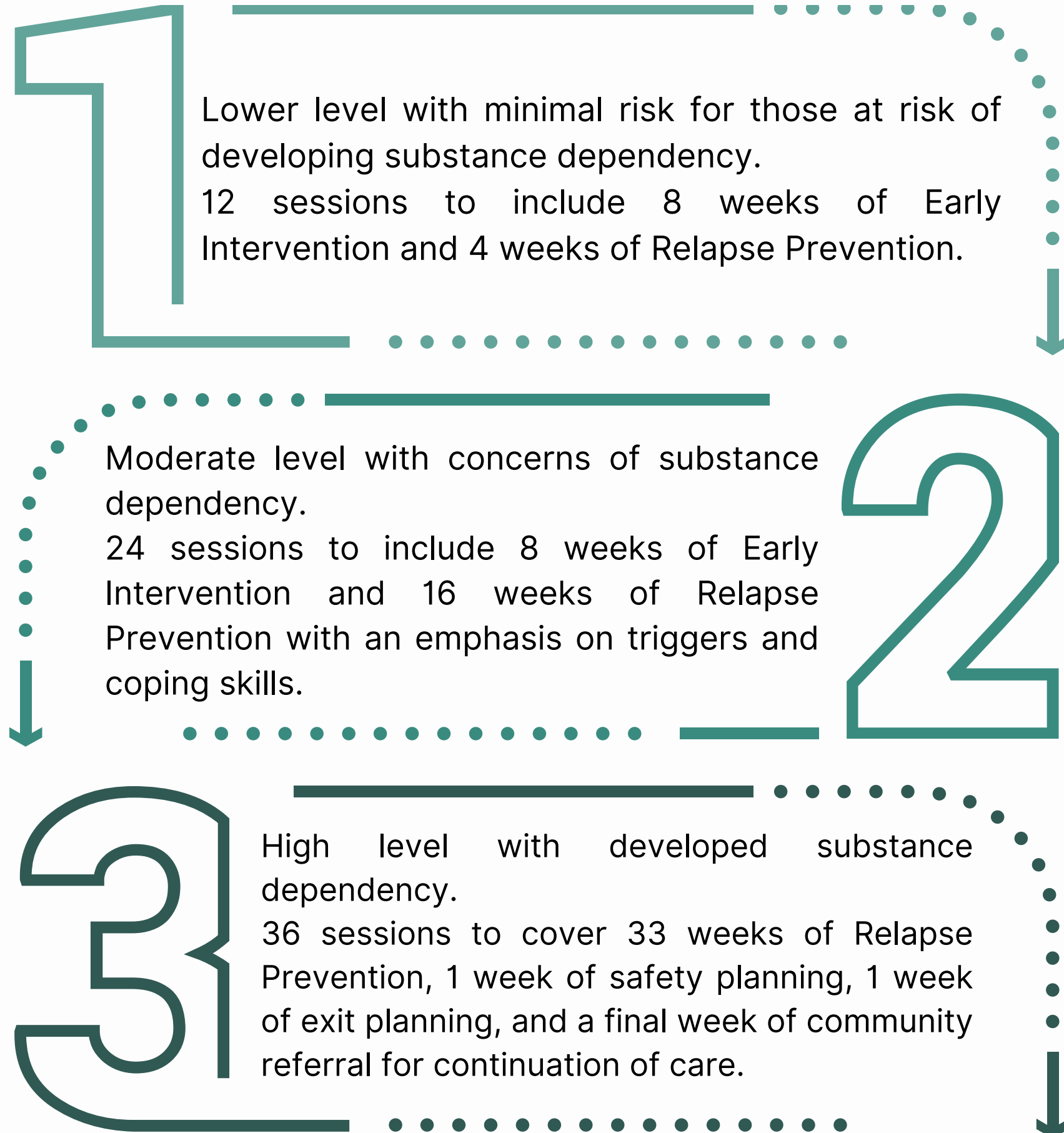
Services extend to anyone impacted by substance abuse - not just the person with the addiction.

Including:

- Individual Counseling
- Cognitive Behavioral Therapy (CBT)
- Cognitive Processing Therapy (CPT)
- Trauma Therapy
- Accelerated Resolution Therapy (ART)
- Post-Traumatic Stress Disorder Therapy (PTSD)

CCARC treatment services shall include ASAM levels 0.5 and 1.0 outpatient services using Matrix Early Intervention/Relapse Prevention as the treatment modality by offering 3 levels of care based upon the individual assessments.

# ASAM LEVELS



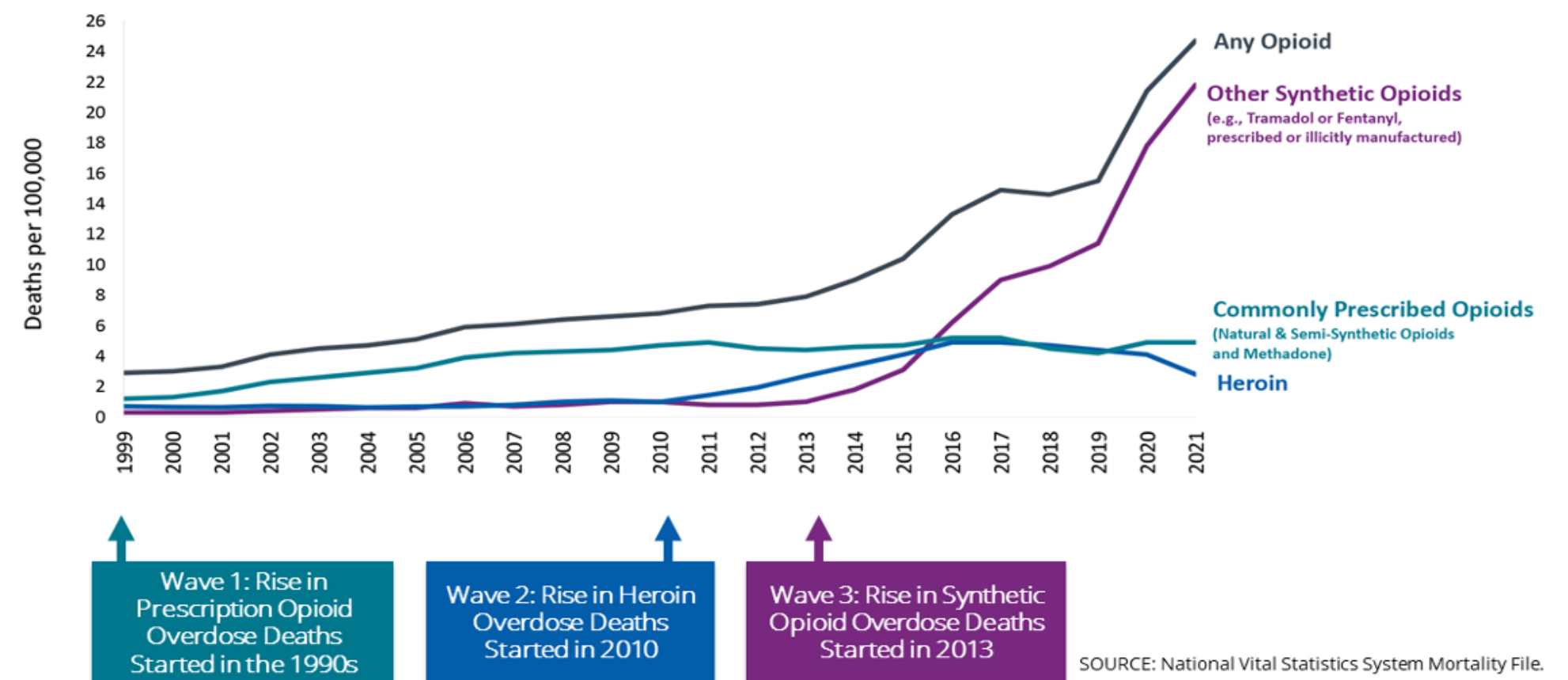
# UNDERSTANDING THE OPIOID OVERDOSE EPIDEMIC

The number of people who died from a drug overdose in 2021 was over six times the number in 1999. The drug overdoses deaths increased more than 16% from 2020 to 2021.

Over 75% of the nearly 107,000 drug overdose deaths in 2021 involved an opioid.

- Opioid involved death rates increased by over 15%
- Prescription opioid-involved death rates remained the same.
- Heroin-involved death rates decreased nearly 32%
- Synthetic opioid-involved death rates (excluding methadone) increased by over 22%




## Three Waves of Opioid Overdose Deaths



# RISE IN OPIOID DEATHS

According to the CDC, from 1991-2021, nearly 645k people died from an overdose involving any opioid, including prescription and illicit opioids.

This increase in opioid deaths can be outlined in 3 distinct waves:

-  The first wave began with increased prescribing of opioids in the 1900s, with overdose deaths involving prescription opioids (natural and semi-synthetic opioids and methadone) increasing since at least 1993.
-  The second wave began in 2010, with rapid increases in overdose deaths involving heroin.
-  The third wave began in 2013, with significant increases in overdose deaths involving synthetic opioids, particularly those involving illicitly manufactured fentanyl. The market for illicitly manufactured fentanyl continues to change, and it can be found in combination with heroin, counterfeit pills, and cocaine.

# WHERE WE ARE TODAY

As of February 29, 2024, we have conducted 350 individual sessions at an estimated cost of \$120.00 per session - saving consumers \$42,000.

We have conducted 18 substance use disorder assessments an an estimated cost of \$130/assessment - saving consumers \$2,340.

## Current collaborators:

- Providence Women's Recovery
- Whitfield and Murray DFACS
- Mental Health Court
- Domestic Violence Court
- Northwest GA Women's Crisis Center
- Community Supervision



**PROVIDENCE WOMEN'S RECOVERY**  
AN OUTREACH OF PROVIDENCE MINISTRIES  
711 SOUTH HAMILTON STREET DALTON, GA 30720

January 4, 2024

To Whom It May Concern:

I wanted to take the time express my appreciation and gratitude for the counseling services currently provided to Providence Women's Recovery through Conasauga Community Addiction Counseling. Counseling, particularly trauma counseling, is by far a significant part of the healing process from addiction. Our clients have benefitted not only therapeutically, but also economically, since most clients who enter our treatment center do not have insurance coverage. The quality of services delivered from Melissa Beavers, LCWS, CADCI and her staff have been instrumental in impacting our clients' lives and helping aid in building a strong foundation for long-term recovery.

I appreciate all the time and support their agency offers to Providence Women's Recovery. I look forward to a long partnership for the health and well-being of members of our community.

Respectfully,

Cynthia Barton, MS  
Director, Providence Women's Recovery

PHONE 706.519.0404 FAX 706.673.3845

# WHERE WE ARE GOING

## 1 YEAR PLAN

Part-time case manager to handle appointments, intake paperwork, arrange schedules for appointments and ensure appointments are confirmed and all paperwork is uploaded into the case management system.

Office space for case manager including laptops, printers, and office furniture.

Electronic Health Records - added cost but HIPPA compliant.

Larger office space to accommodate growth, office equipment, electronic check-in.

Training for continuing education units to maintain certifications - state requirement.



## 5 YEAR PLAN

Part-time case manager moves to full time with the same stipulations.

3rd counselor to serve the community in evening hours.

Office space for 3rd counselor including office essentials.

Group implementation to serve low income clients that are needing 2.1 level of care. (Highly requested)

Group training and certifications as well as necessary materials.



QUESTIONS?

**CONTACT:  
MELISSA BEAVERS**

**[mbeavers@whitfieldcountyga.com](mailto:mbeavers@whitfieldcountyga.com)**

**[www.whitfieldcountyga.com](http://www.whitfieldcountyga.com)**

**706-281-4820**

**301 W. Crawford St.  
Dalton, Ga 30720**