



Dalton Police Department Public Safety Commission Meeting

February 17, 2026

TABLE OF CONTENTS

CRIME STATISTICS

CRASH STATISTICS

FINANCIAL STATISTICS

January 1, 2026 – January 31, 2026



PART 1 CRIMES

January 2026

<u>Violent Crimes</u>		<u>Current</u>		<u>2024 YTD</u>	<u>2025 YTD</u>	<u>YTD Change</u>
		0		8	2	-75.00%
Homicide		0		0	1	Not Calculable
26-000168	1/10/2026	313 S Grimes St				
A male subject is believed to have killed his girlfriend then subsequently set her and her house on fire. The suspect fled the area prior to law enforcement being made aware of the incident. The suspect later died as a result of a car chase near Lexington, Kentucky. The case is under investigation.						
Rape		0		2	0	-100.00%
Robbery		0		0	0	Not Calculable
Aggravated Assault		0		6	1	-83.33%
<u>Property Crimes</u>		<u>Current</u>		<u>2024 YTD</u>	<u>2025 YTD</u>	<u>YTD Change</u>
		15		47	41	-12.77%
Burglary		0		3	5	66.67%
Larceny-Theft		14		44	33	-25.00%
Motor Vehicle Theft		1		0	2	Not Calculable
Arson		0		0	1	Not Calculable

There were 43 Part 1 crimes in January 2026. That is a decrease of approximately 23.21% compared to 56 in January 2025. Total Part 1 crimes for 2026 are approximately 41.58% lower than the 5-year average to start the year.

Violent crimes have decreased by approximately 75% when compared to 2025. There have been 2 violent crimes YTD 2026 compared to 8 violent crimes in 2025. There has been a homicide and an aggravated battery so far this year. The 5-year average for violent crimes is 7.4 crimes. Current violent crime numbers are lower than 2025, and are approximately 73% lower than the 5-year average.

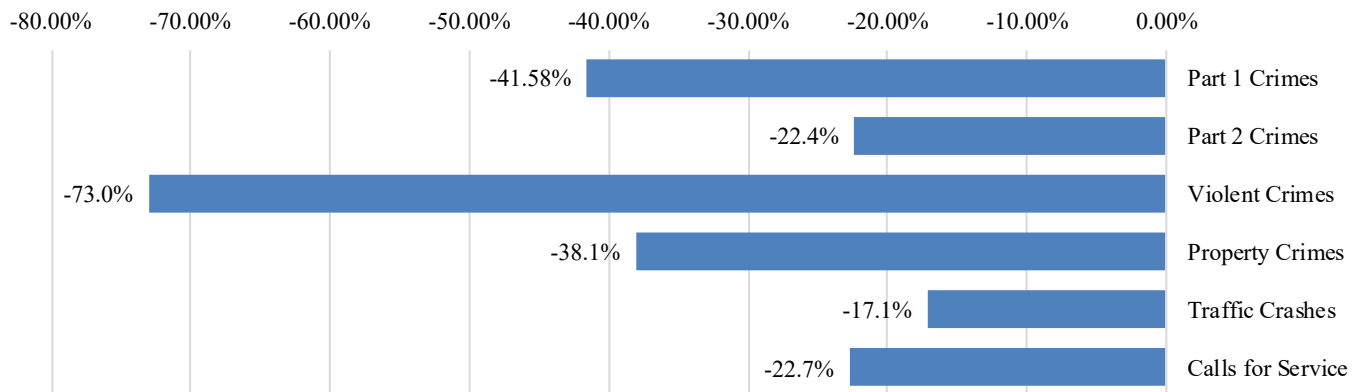
Property crimes have decreased by 12.8% when compared to 2025. Current property crime numbers are approximately 38.1% lower than the 5-year average.



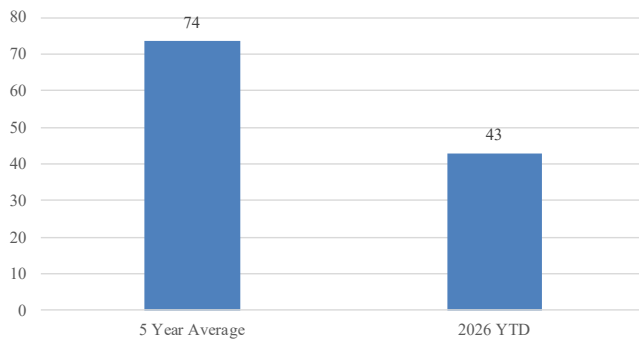
FIVE-YEAR AVERAGE

January 2026

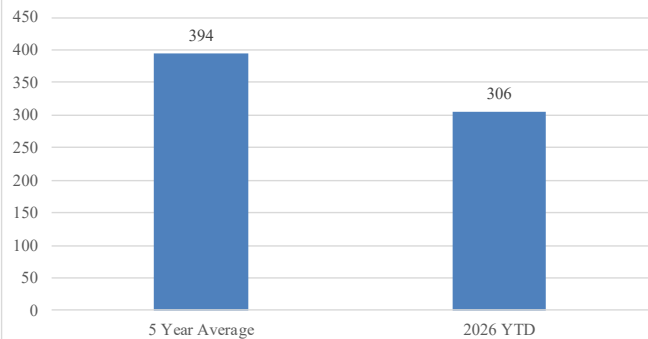
2026 YTD Compared to 5-Year Average



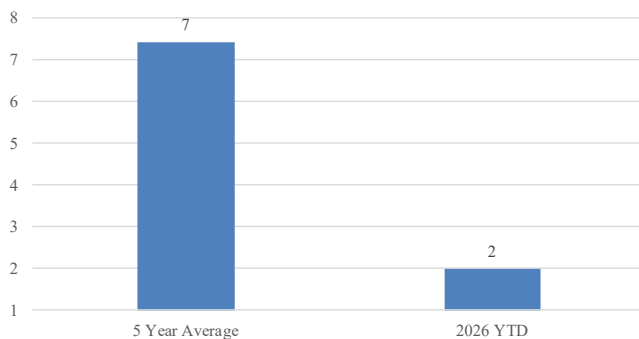
Part 1 Crimes



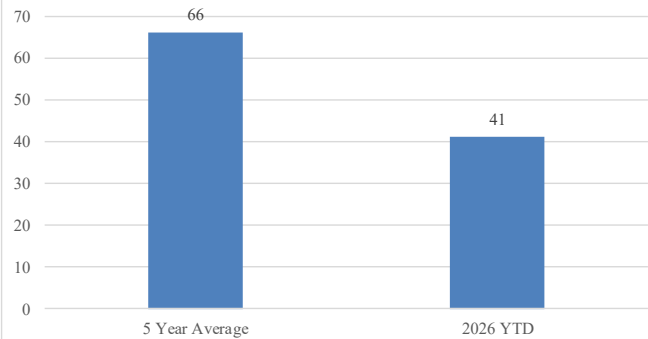
Part 2 Crimes



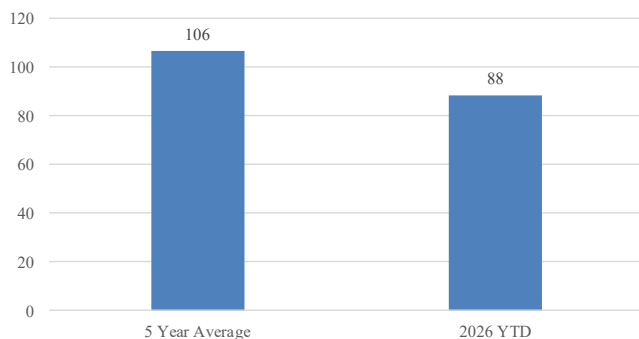
Violent Crimes



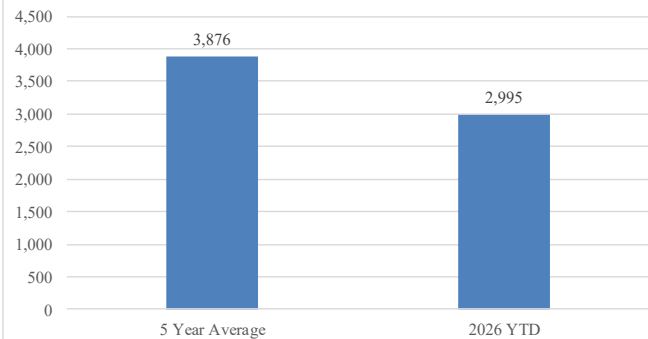
Property Crimes



Traffic Crashes



Calls For Service





CRASH STATISTICS

January 2026

Traffic crashes decreased by approximately 24.8% when compared to December 2025. Year to date crashes have decreased by approximately 14.6%. Angle collisions were the most frequent crash type. Following too closely was the most frequent contributing factor. Walnut Ave had the highest number of crashes and injuries during January.

Total Crashes	Current	Previous	Change	YTD 2026	YTD 2025	Change
	88	117	-24.8%	88	103	-14.6%
Injury Crashes	Total	Complaint	Minor	Serious	Fatality	Multiple
	10	8	1	1	0	2
Total Injuries	13					
DUI Crashes	Speed Crashes	Distracted Crashes		Following Too Closely Crashes		
2	4	6		19		
Day of the Week	Total				Time of Day	Total
Monday	11				0000 - 0559	4
Tuesday	19				0600 - 0859	12
Wednesday	9				0900 - 1059	11
Thursday	15				1100 - 1359	15
Friday	18				1400 - 1559	17
Saturday	11				1600 - 1859	19
Sunday	5				1900 - 2159	7
				2200 - 2359	3	
Collision Type	Total				Contributing Factors	Total
Angle	32				Following Too Closely	19
Rear End	32				Failure to Yield	16
Collision with an Object	14				Improper Lane Change	8
Sideswipe-Same Direction	8					
Sideswipe-Opposite Direction	2					
Top Streets	Total Crashes	% Total	Injuries		% Injuries	
Walnut Ave	19	21.6%	5		38.5%	
Glenwood Ave	11	12.5%	3		23.1%	
Chattanooga Rd	7	8.0%	1		7.7%	

	Traffic Stops	Warnings	Citations
January 2026	898	668	468
2026 YTD	898	668	468
2025 YTD	1381	1006	663